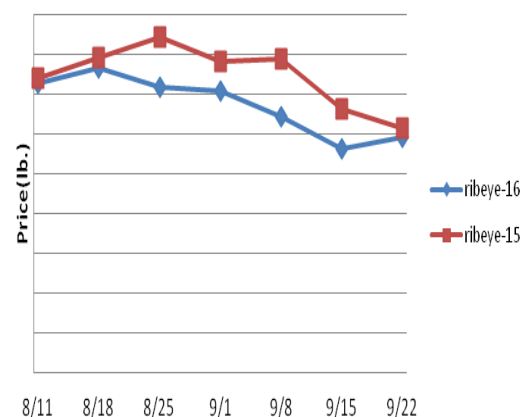


Beef, Veal and Lamb Report

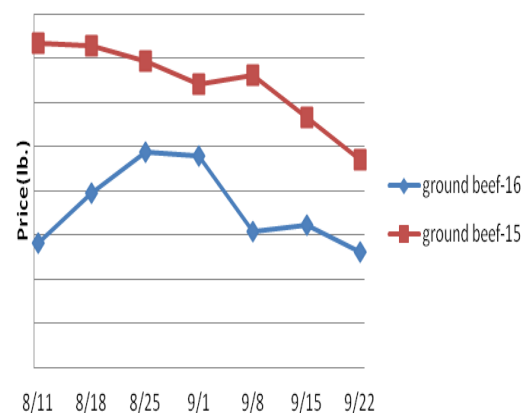
Beef, Veal & Lamb- Beef production last week was 1.8% larger than the same week last year. Solid year over year gains in beef production are expected to persist at least into the winter. Beef supplies are ample and demand has seasonally waned as of late which is weighing on the beef markets. The weekly USDA choice boxed beef cutout fell to its least expensive level for the second week of September since 2011. However, demand is starting to escalate with spot shipments last week the largest since May. Further, retail feature activity has been solid. Retail ground beef prices during August were the lowest in 30 months. The beef markets are expected to find support in the not-so-distant future.

Description	Market Trend	Supplies	Price vs. Last Year
Live Cattle (Steer)	Increasing	Short	Lower
Feeder Cattle Index (CME)	Increasing	Short	Lower
Ground Beef 81/19	Decreasing	Good	Lower
Ground Chuck	Steady	Good	Lower
109 Export Rib (ch)	Increasing	Good	Higher
109 Export Rib (pr)	Increasing	Good	Lower
112a Ribeye (ch)	Increasing	Good	Lower
112a Ribeye (pr)	Decreasing	Good	Lower
114a Chuck , Shlder Cld(ch)	Increasing	Good	Lower
116 Chuck (sel)	Increasing	Good	Lower
116 Chuck (ch)	Increasing	Good	Lower
116b Chuck Tender (ch)	Increasing	Good	Lower
120 Brisket (ch)	Increasing	Good	Lower
120a Brisket (ch)	Decreasing	Good	Lower
121c Outside Skirt (ch/sel)	Decreasing	Good	Lower
121d Inside Skirt (ch/sel)	Decreasing	Good	Lower
121e Cap & Wedge	Increasing	Good	Lower
167a Knuckle, Trimmed (ch)	Increasing	Good	Lower
168 Inside Round (ch)	Increasing	Good	Lower
169 Top Round (ch)	Decreasing	Good	Lower
171b Outside Round (ch)	Increasing	Good	Lower
174 Short Loin (ch 0x1)	Decreasing	Good	Lower
174 Short Loin (pr 2x3)	Decreasing	Good	Lower
180 1x1 Strip (ch)	Increasing	Good	Lower
180 1x1 Strip (pr)	Decreasing	Good	Lower
180 0x1 Strip (ch)	Increasing	Good	Lower
184 Top Butt, boneless (ch)	Decreasing	Good	Lower
184 Top Butt, boneless (pr)	Decreasing	Good	Lower
185a Sirloin Flap (ch)	Decreasing	Good	Higher
185c Loin, Tri-Tip (ch)	Increasing	Good	Lower
189a Tender (sel, 5 lb & up)	Decreasing	Good	Lower
189a Tender (ch, 5 lb & up)	Decreasing	Good	Lower
189a Tender (pr, heavy)	Decreasing	Good	Lower
193 Flank Steak (ch)	Increasing	Good	Lower
50% Trimmings	Increasing	Good	Lower
65% Trimmings	Decreasing	Good	Lower
75% Trimmings	Decreasing	Good	Lower
85% Trimmings	Decreasing	Short	Lower
90% Trimmings	Decreasing	Short	Lower
90% Imported Beef (frz)	Decreasing	Good	Lower
95% Imported Beef (frz)	Decreasing	Good	Lower
Veal Rack (Hotel 7 rib)	Steady	Good	Lower
Veal Top Round (cap off)	Decreasing	Good	Lower

112a Choice Beef Ribeye (heavy)



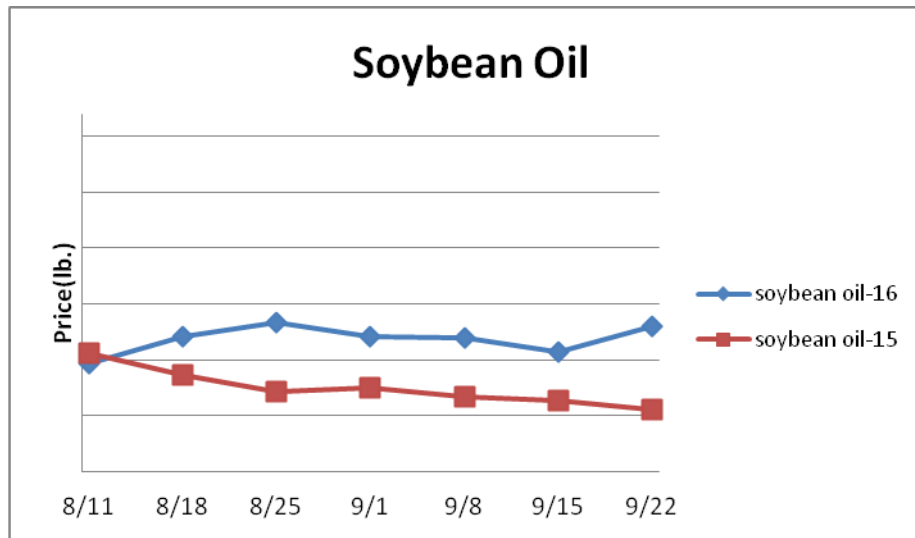
81/19 Ground Beef



Grains

The domestic 2017-18 winter wheat planting season is underway. As of September 18th, 17% of the U.S. winter wheat crop had been sowed which is slightly above the five-year average for the date. Soil moisture conditions for winter wheat are historically favorable. Still, the downside price risk for wheat is likely nominal.

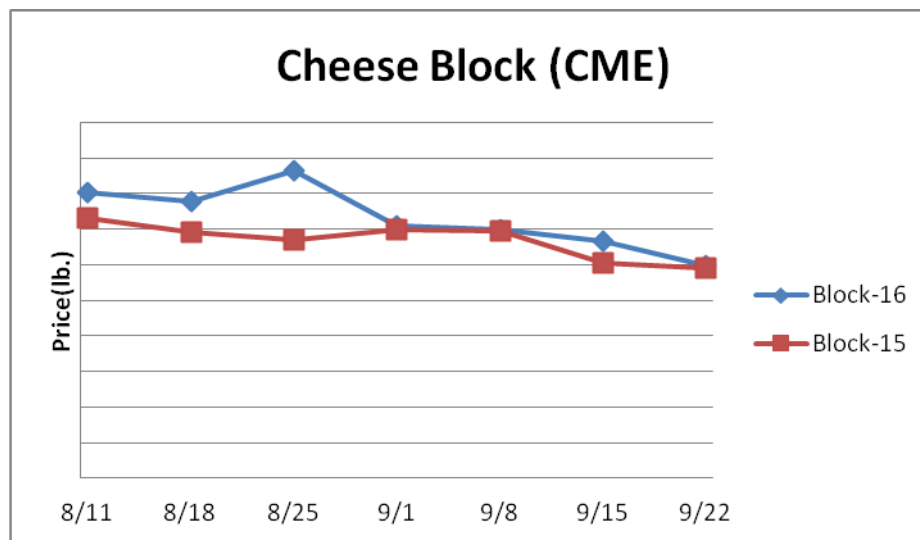
Description	Market Trend	Supplies	Price vs. Last Year
Soybeans, bushel	Increasing	Good	Higher
Crude Soybean Oil, lb	Increasing	Good	Higher
Soybean Meal, ton	Increasing	Good	Higher
Corn, bushel	Increasing	Good	Lower
Crude Corn Oil, lb	Decreasing	Good	Higher
High Fructose Corn Syrup	Increasing	Good	Lower
Distillers Grain, Dry	Decreasing	Good	Lower
Crude Palm Oil, lb BMD	Increasing	Good	Higher
HRW Wheat, bushel	Increasing	Good	Lower
DNS Wheat 14%, bushel	Decreasing	Good	Lower
Durum Wheat, bushel	Steady	Short	Lower
Pinto Beans, lb	Increasing	Good	Higher
Black Beans, lb	Increasing	Good	Higher
Rice, Long Grain, lb	Steady	Good	Lower



Dairy

The CME cheese markets have softened during the last week falling to some of their least expensive levels since the spring. This is due to better milk supplies and lackluster export demand. But cheese feature activity at retail has been impressive with American cheese prices during August the lowest in over a year. Further, export demand for cheese is anticipated to expand in the coming months. Any seasonal cheese market declines this fall may only be modest. The CME butter market has fallen to multi-month lows as well. Butter prices usually move lower during October.

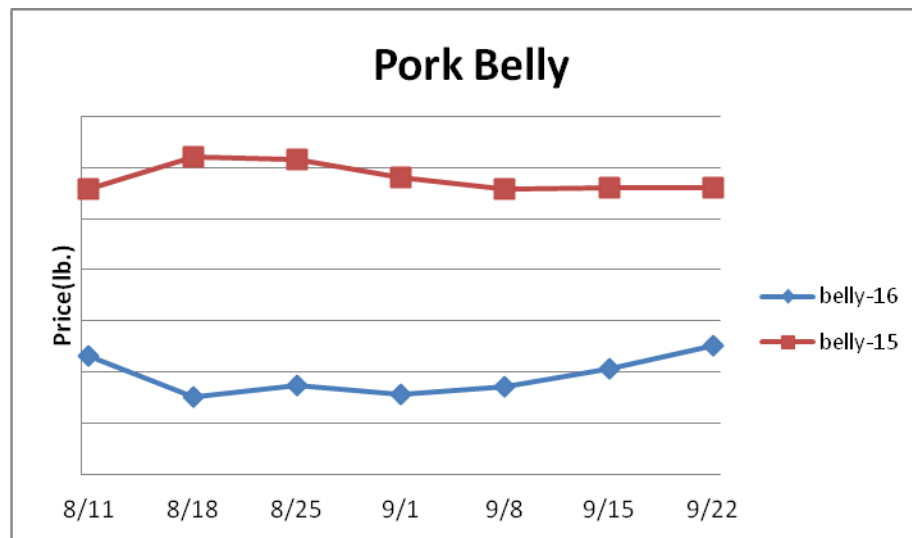
Description	Market Trend	Supplies	Price vs. Last Year
Cheese Barrels (CME)	Decreasing	Good	Higher
Cheese Blocks (CME)	Decreasing	Good	Higher
American Cheese	Decreasing	Good	Lower
Cheddar Cheese (40 lb)	Decreasing	Good	Lower
Mozzarella Cheese	Decreasing	Good	Lower
Provolone Cheese	Steady	Good	Lower
Parmesan Cheese	Decreasing	Good	Lower
Butter (CME)	Decreasing	Good	Lower
Nonfat Dry Milk	Increasing	Ample	Higher
Whey, Dry	Increasing	Good	Higher
Class 1 Base	Steady	Good	Higher
Class II Cream, heavy	Increasing	Good	Lower
Class III Milk (CME)	Decreasing	Good	Higher
Class IV Milk (CME)	Decreasing	Good	Lower



Pork

Pork output last week was 1.9% better than the same week last year. Solid year over year pork production expansion is anticipated this fall due to ample hog supplies. Hog futures suggest that spot hog prices later this year could fall to levels not experienced since the summer of 2009. The ham markets have been buoyed as of late by processors seeking product for the pending holidays. History suggests that lower ham prices are likely later this fall. Last year the 23-27 ham market declined 20% during November and December.

Description	Market Trend	Supplies	Price vs. Last Year
Live Hogs	Decreasing	Ample	Lower
Sow	Decreasing	Ample	Higher
Belly (bacon)	Increasing	Good	Lower
Sparerib(4.25 lb & down)	Decreasing	Good	Lower
Ham (20-23 lb)	Decreasing	Good	Higher
Ham (23-27 lb)	Decreasing	Good	Higher
Loin (bone in)	Increasing	Good	Higher
Babyback Rib (1.75 lb & up)	Increasing	Good	Lower
Tenderloin (1.25 lb)	Increasing	Good	Higher
Boston Butt, untrmd (4-8 lb)	Decreasing	Good	Higher
Picnic, untrmd	Increasing	Good	Higher
SS Picnic, smoker trm box	Increasing	Good	Higher
42% Trimmings	Decreasing	Good	Lower
72% Trimmings	Decreasing	Good	Lower



Poultry

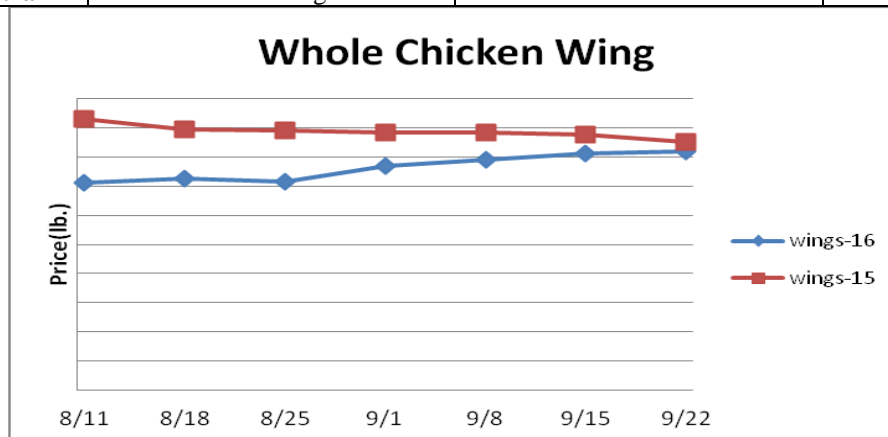
Chicken production for the week ending September 10th was 1.7% below last year. The six week moving average for chicken output was .1% less than 2015 due to a .4% decline in bird weights. Recent broiler egg set data suggests that chicken output will climb above the prior year levels this fall. The six-week average for broiler egg sets is tracking 1.6% above a year ago. The slowed chicken production and seasonally rising demand has brought support to the chicken wing markets. The ARA Chicken Wing Index has risen nearly \$.25 lb. during the last month. If year over year chicken output expansion does not improve, it could be especially supportive of wing prices this fall. Retail table egg prices in August were the lowest in six years.

Description	Market Trend	Supplies	Price vs. Last Year
Whole Birds (2.5-3 GA)	Increasing	Good	Lower
Wings (whole)	Increasing	Good	Lower
Wings (jumbo cut)	Increasing	Good	Higher
Wing Index (ARA)	Increasing	Good	Higher
Breast, Bone In	Increasing	Good	Lower
Breast, Boneless Skinless	Decreasing	Good	Lower
Breast Boneless Index (ARA)	Decreasing	Good	Higher
Tenderloin Index (ARA)	Increasing	Good	Higher
Legs (whole)	Increasing	Good	Higher
Leg Quarters	Increasing	Good	Lower
Leg Quarter Index (ARA)	Decreasing	Good	Higher
Thighs, Bone In	Increasing	Good	Higher
Thighs, Boneless	Decreasing	Good	Higher

Description	Market Trend	Supplies	Price vs. Last Year
Whole Turkey (8-16 lb)	Steady	Short	Lower
Turkey Breast, Bnls/Sknls	Steady	Short	Lower

Eggs

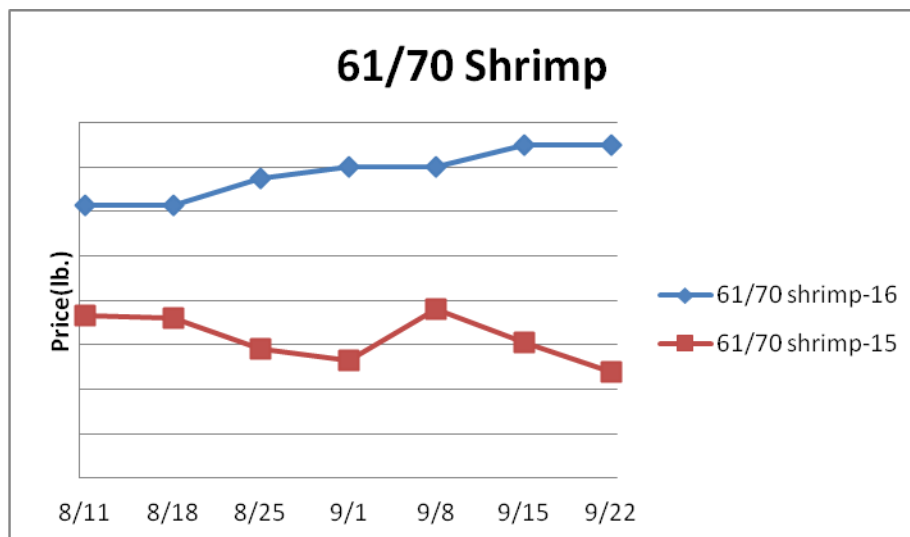
Description	Market Trend	Supplies	Price vs. Last Year
Large Eggs (dozen)	Decreasing	Short	Lower
Medium Eggs (dozen)	Decreasing	Short	Lower
Liquid Whole Eggs	Steady	Short	Lower
Liquid Egg Whites	Increasing	Short	Lower
Liquid Egg Yolks	Steady	Short	Lower
Egg Breaker Stock Central	Increasing	Short	n/c



Seafood

Retail seafood prices during August were up 1.1% from the previous year. However, retail prices for other proteins including beef and chicken were well below 2015. Higher priced seafood at grocery stores could slow consumption and temper pending wholesale market increases.

Description	Market Trend	Supplies	Price vs. Last Year
Shrimp (16/20 frz)	Decreasing	Good	Higher
Shrimp (61/70 frz)	Steady	Good	Higher
Shrimp Tiger (26/30 frz)	Increasing	Good	Higher
Snow Crab Legs (5-8 oz frz)	Steady	Good	Higher
Snow Crab Legs (8oz & up frz)	Steady	Good	Higher
Cod Tails (3-7 oz frz)	Steady	Good	Lower
Cod Loins (3-12 oz frz)	Steady	Good	Lower
Salmon Portions (4-8 oz frz)	Steady	Good	Higher
Pollock Alaska, Deep Skin	Steady	Good	Lower



Paper and Plastic Product Report

Description	Market Trend	Supplies	Price vs. Last Year
Wood Pulp (paper)			
NBSK- Paper napkin	Decreasing	Good	Lower
42 lb. Linerboard-corrugated box	Increasing	Good	Higher
Plastic Resins (plastic, foam)			
PS-CHH-utensils, cups, to-go cont.	Steady	Good	Lower
PP-HIGP-heavy grade utensils	Steady	Good	Lower
PE-LLD-can liners, film, bags	Steady	Good	Lower

Retail Price Change from Prior Month

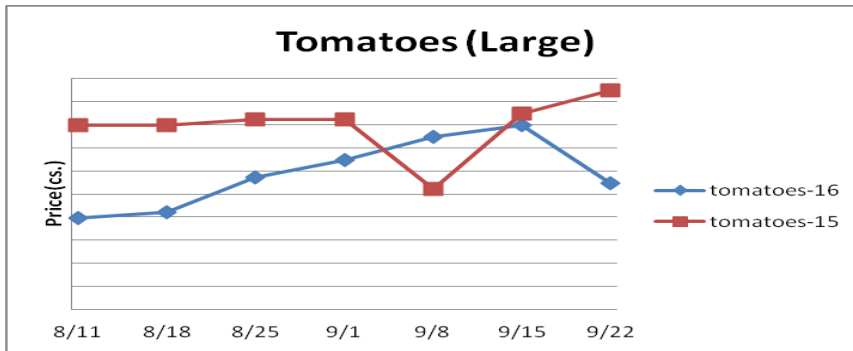
Description	Aug-16	Jul-16	Jun-16
Beef and Veal	Increasing	Decreasing	Decreasing
Dairy	Increasing	Decreasing	Decreasing
Pork	Increasing	Increasing	Increasing
Chicken	Decreasing	Decreasing	Decreasing
Fresh Fish and Seafood	Decreasing	Increasing	Increasing
Fresh Fruits and Vegetables	Increasing	Decreasing	Decreasing

Various Markets

2016 California contracted tomato for processing output is estimated by the USDA at 12.8 million tons which is down 11% from the previous year. Still, canned tomato supplies should remain adequate keeping a lid on prices.

Description	Market Trend	Supplies	Price vs. Last Year
Whole Peeled, Stand (6/10)	Increasing	Good	Higher
Tomato Paste-Industrial (lb)	Increasing	Good	Higher
Coffee lb ICE	Increasing	Good	Higher
Sugar lb ICE	Increasing	Ample	Higher
Cocoa mt ICE	Increasing	Short	Lower
Orange Juice lb ICE	Increasing	Good	Higher
Honey (clover) lb	Steady	Good	Lower

Produce



The lettuce markets continue to trade at relatively engaging levels for buyers. Lettuce demand has been seasonally slack while production has been more than adequate. The overall iceberg lettuce supply last week was 11.3% better than the same week last year. Fairly attractive lettuce prices could persist in the near term. The Idaho potato markets have been relatively deflated as of late as well. The fall potato harvest is building putting downward pressure on potato prices. As of September 18th, 33% of the Idaho potatoes had been harvested. Seasonal charts indicate that inexpensive potato prices should persist next month.

Description	Market Trend	Supplies	Price vs. Last Year
Limes (150 ct)	Increasing	Good	Higher
Lemons (95 ct)	Steady	Good	Lower
Lemons (200 ct)	Increasing	Short	Higher
Honeydew (6 ct)	Decreasing	Good	Lower
Cantaloupe (15 ct)	Decreasing	Good	Lower
Blueberries (12 ct)	Increasing	Good	Higher
Strawberries (12 pnt)	Steady	Good	Lower
Avocados (Hass 48 ct)	Steady	Good	Higher
Bananas (40 lb) Term	Decreasing	Good	Lower
Pineapple (7 ct) Term	Decreasing	Good	Lower
Idaho Potato (60 ct 50 lb)	Decreasing	Short	Higher
Idaho Potato (70 ct 50 lb)	Decreasing	Short	Same
Idaho Potato (70 ct) Term	Decreasing	Short	Lower
Idaho Potato (90 ct 50 lb)	Decreasing	Short	Lower
Idaho Potato #2 (6 oz 100 lb)	Decreasing	Short	Higher
Processing Potato (cwt)	Steady	Short	Higher
Yellow Onions (50 lb)	Increasing	Good	Higher
Yellow Onions (50 lb) Term	Decreasing	Good	Lower
Red Onions (25 lb) Term	Decreasing	Good	Lower
White Onions (50 lb) Term	Increasing	Good	Lower
Tomatoes (lg case)	Increasing	Good	Lower
Tomatoes (5x6 lb) Term	Decreasing	Good	Higher
Tomatoes (4x5 vine ripe)	Decreasing	Good	Lower
Roma Tomatoes (lg case)	Decreasing	Good	Higher
Roma Tomatoes (xlg case)	Decreasing	Good	Higher
Green Peppers (lg case)	Increasing	Good	Higher
Red Peppers (lg 15 lb case)	Steady	Good	Lower
Iceberg Lettuce (24 ct)	Decreasing	Good	Lower
Iceberg Lettuce (24 ct) Term	Decreasing	Good	Lower
Leaf Lettuce (24 ct)	Increasing	Good	Lower
Romaine Lettuce (24 ct)	Decreasing	Good	Lower
Mesculin Mix (3 lb) Term	Steady	Good	Lower
Broccoli (14 ct)	Increasing	Good	Lower
Squash (1/2 bushel)	Decreasing	Good	Higher
Zucchini (1/2 bushel)	Decreasing	Good	Higher
Green Beans (bushel)	Decreasing	Good	Higher
Spinach (flat 24)	Decreasing	Good	Lower
Mushrooms (10 lb lg) Term	Steady	Good	Higher
Cucumbers (bushel)	Decreasing	Good	Higher
Pickles (200-300 ct) Term	Increasing	Good	Higher
Asparagus (sm)	Decreasing	Good	Higher
Freight (truck CA-Cty Av)	Increasing	Good	Higher

