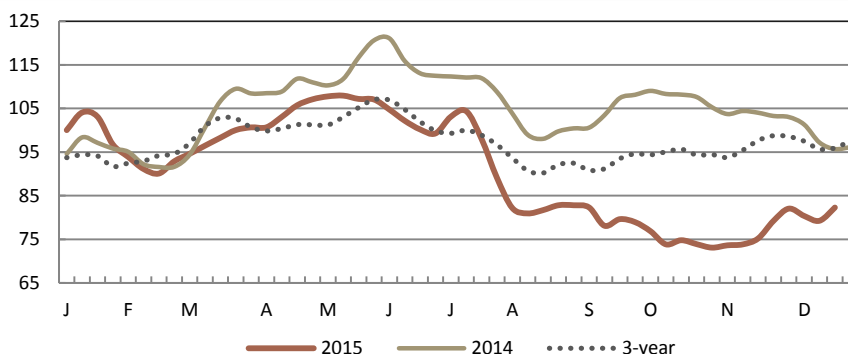




NATIONAL COMPOSITE WEIGHTED AVERAGE

	Wtd Avg	Change	1,000 lbs.
This Week:	82.29	↑ 3.03	11,673
Last Week:	79.26		12,439
Last Year:	96.12	↓ 13.83	10,758
Monthly Composite Weighted Average			
Nov	75.37		48,175



WEEK IN REVIEW

Prices of whole broiler fryers are trending steady to firm. Offerings are light. Demand is light to good, mostly moderate. Floor stocks are light to moderate. Sizes are in a full range. Market activity is slow to moderate with traditional holiday items and features receiving best call.

EASTERN REGION

THIS WEEK							LAST WEEK	
	Price Range	Majority	Wtd Avg	Change	1,000 lbs.		Wtd Avg	1,000 lbs.
Whole Body:	68.00 - 120.00	79.00 - 87.00	84.03	↑ 3.44	5,269		80.58	5,336
WOGS:	68.00 - 107.00	80.00 - 86.00	83.29	↑ 4.43	1,205		78.86	1,367
NEW YORK								
Whole Body:	75.00 - 107.00	80.00 - 86.00	82.19	↑ 5.04	1,320		77.15	1,441

CENTRAL REGION

THIS WEEK							LAST WEEK	
	Price Range	Majority	Wtd Avg	Change	1,000 lbs.		Wtd Avg	1,000 lbs.
Whole Body:	57.00 - 114.00	74.00 - 82.00	78.67	↑ 2.91	3,959		75.76	4,672
WOGS:	57.00 - 114.00	72.00 - 80.00	76.97	↑ 2.67	3,100		74.29	3,769
CHICAGO								
Whole Body:	65.00 - 114.00	76.00 - 84.00	80.54	↑ 2.44	2,219		78.10	2,472

WESTERN REGION

THIS WEEK							LAST WEEK	
	Price Range	Majority	Wtd Avg	Change	1,000 lbs.		Wtd Avg	1,000 lbs.
Whole Body:	63.00 - 97.00	77.00 - 89.00	84.41	↑ 1.35	2,445		83.06	2,431
WOGS:	63.00 - 97.00	77.00 - 89.00	83.47	↑ 0.98	2,115		82.49	2,215
LOS ANGELES								
Whole Body:	63.00 - 95.00	77.00 - 89.00	83.57	↑ 1.60	1,810		81.98	2,036

EXPLANATORY NOTES

Negotiated prices in trucklot and less-than-trucklot quantities of ready-to-cook whole body broiler/fryers delivered to first receivers; prices in cents per pound; volume in thousands of pounds.

Eastern Region: AL,CT,DE,FL,GA,MA,MD,ME,MS,NC,NH,NJ,NY,PA,RI,SC,TN,VT,VA,WV. **Central Region:** AR,CO,IA,IL,IN,KS,KY,LA,MI,MN,MO,NE,NM,OK,OH,SD,TX,WI. **Western Region:** AZ,CA,ID,MT,NV,OR,UT,WA,WY.

Source: USDA AMS Livestock, Poultry & Grain Market News;

www.ams.usda.gov/market-news/livestock-poultry-grain

Des Moines, IA & Atlanta, GA (515) 284-4460: Email: desm.lpgmn@ams.usda.gov

Prepared: 24-Dec-15 12:09 PM Central Time