

Commodity Activity - Weekly Average

11/17/2014	This Week	Last Week	YTD Avg	Last Year	vs. Last Week	vs. Last Year
CME Group						
Corn	↓ 371.75	377.75	418.42	418.40	-1.59%	-11.15%
Soybean	↓ 1024.8	1043.1	1263.3	1289.7	-1.75%	-20.54%
Soy Meal	↓ 376.94	389.98	427.29	414.10	-3.34%	-8.97%
Soybean Oil	↑ 0.3259	0.3234	0.3741	0.4062	0.77%	-19.77%
Rough Rice	↑ 12.60	11.97	15.48	15.72	5.22%	-19.85%
Wheat	↑ 546.60	539.90	585.90	647.60	1.24%	-15.60%
Cheddar Barrel	↓ 1.847	1.967	2.127	1.755	-6.10%	5.27%
Cheddar Block	↓ 1.807	2.011	2.162	1.823	-10.14%	-0.88%
Milk Class III	↑ 21.83	21.69	22.59	18.80	0.65%	16.09%
Butter AA	↓ 1.991	1.993	2.194	1.658	-0.10%	20.08%

Source: CME Group

USDA Weekly Prices

Live Cattle	↑ 1.707	1.671	1.527	1.316	2.19%	29.78%
Course Ground Beef	↑ 2.705	2.700	2.374	1.778	0.18%	52.19%
Live Hog	↑ 0.5835	0.5675	0.6994	0.5510	2.82%	5.90%
Pork Bellies	↓ 1.51	1.69	2.30	2.15	-11.11%	-29.93%
Chicken Whole (GA Dock)	↔ 1.1400	1.1400	1.0975	1.0450	0.00%	9.09%
Crude Corn Oil	↓ 33.65	34.00	39.16	39.20	-1.03%	-14.16%
Crude Peanut Oil	↔ 72.00	72.00	71.35	90.40	0.00%	-20.35%

Source: USDA

NYMEX Futures & Retail

Crude Oil	↓ 75.59	76.51	96.63	94.00	-1.21%	-19.59%
Heating Oil No.2 Spot	↓ 214.30	232.70	280.20	295.16	-7.91%	-27.40%
On Highway Diesel	↓ 366.10	367.70	370.87	382.20	-0.44%	-4.21%
On Highway Gasoline	↓ 294.10	299.30	347.71	321.90	-1.74%	-8.64%
Natural Gas	↑ 4.342	4.137	4.346	3.663	4.96%	18.54%

Source: New York Mercantile Exchange

Federal Reserve

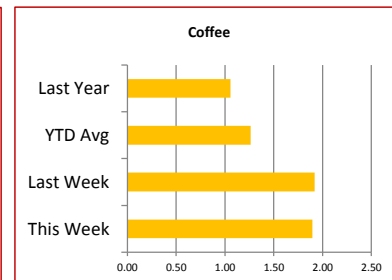
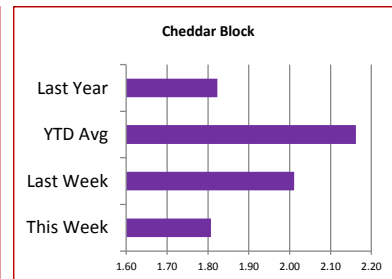
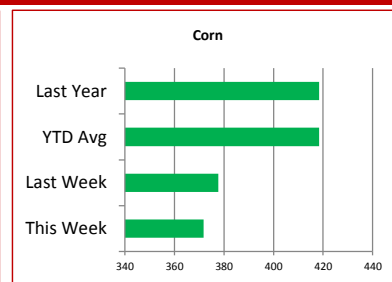
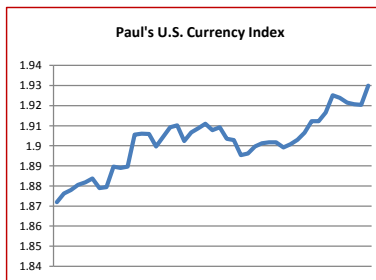
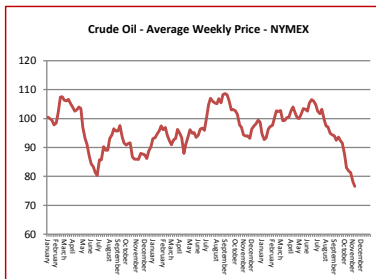
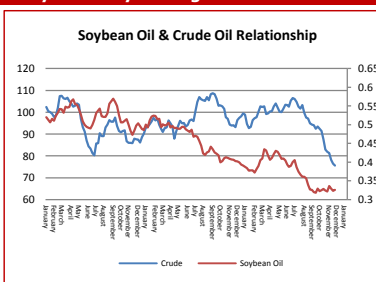
*Euro	↑ 1.2493	1.2469	1.3398	1.3490	0.19%	-7.39%
*British Pound	↓ 1.5658	1.579	1.6568	1.6134	-0.84%	-2.95%
Canadian Dollar	↓ 1.1298	1.1332	1.0986	1.0482	-0.30%	7.78%
Chinese Yuan	↓ 6.122	6.124	6.158	6.093	-0.03%	0.48%
Swiss Frank	↓ 0.962	0.964	0.908	0.913	-0.24%	5.33%

Source: Federal Reserve Bank of New York

NYBOT Futures

Sugar 16	↑ 24.35	24.08	20.41	20.42	1.12%	19.25%
Coffee	↓ 1.8965	1.9200	1.2642	1.0575	-1.22%	79.34%

Source: Intercontinental Exchange



Market Commentary

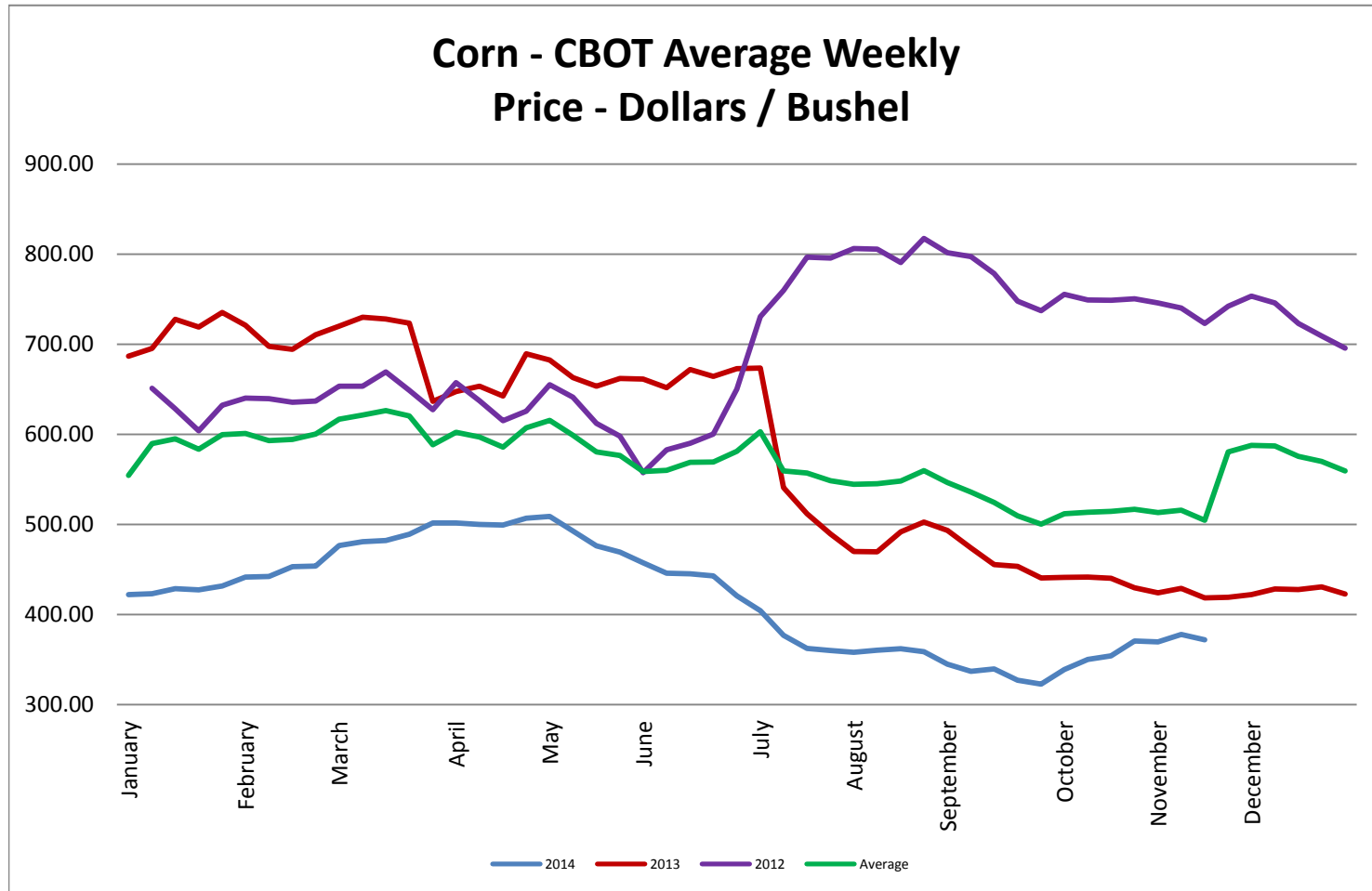
Commentary: While the market overall traded higher all last week, it fell off by Friday to continue its sideways range-bound trade. Meal and bean export demand is very strong and seems to be increasing. Soybean oil got a break from the announcement that the EPA will delay its decision on biofuel volume mandates. The 2014 crop for the U.S. is pretty much complete. The sowing of the South American crop is behind, but the weather looks like they will get a boost. Canola basis has been on the rise and any good opportunities to circumvent this winter's logistics challenges are all but gone. Also most all Canola processors have reported that they are completely sold out also running cash values higher.

Have a great Thanksgiving!

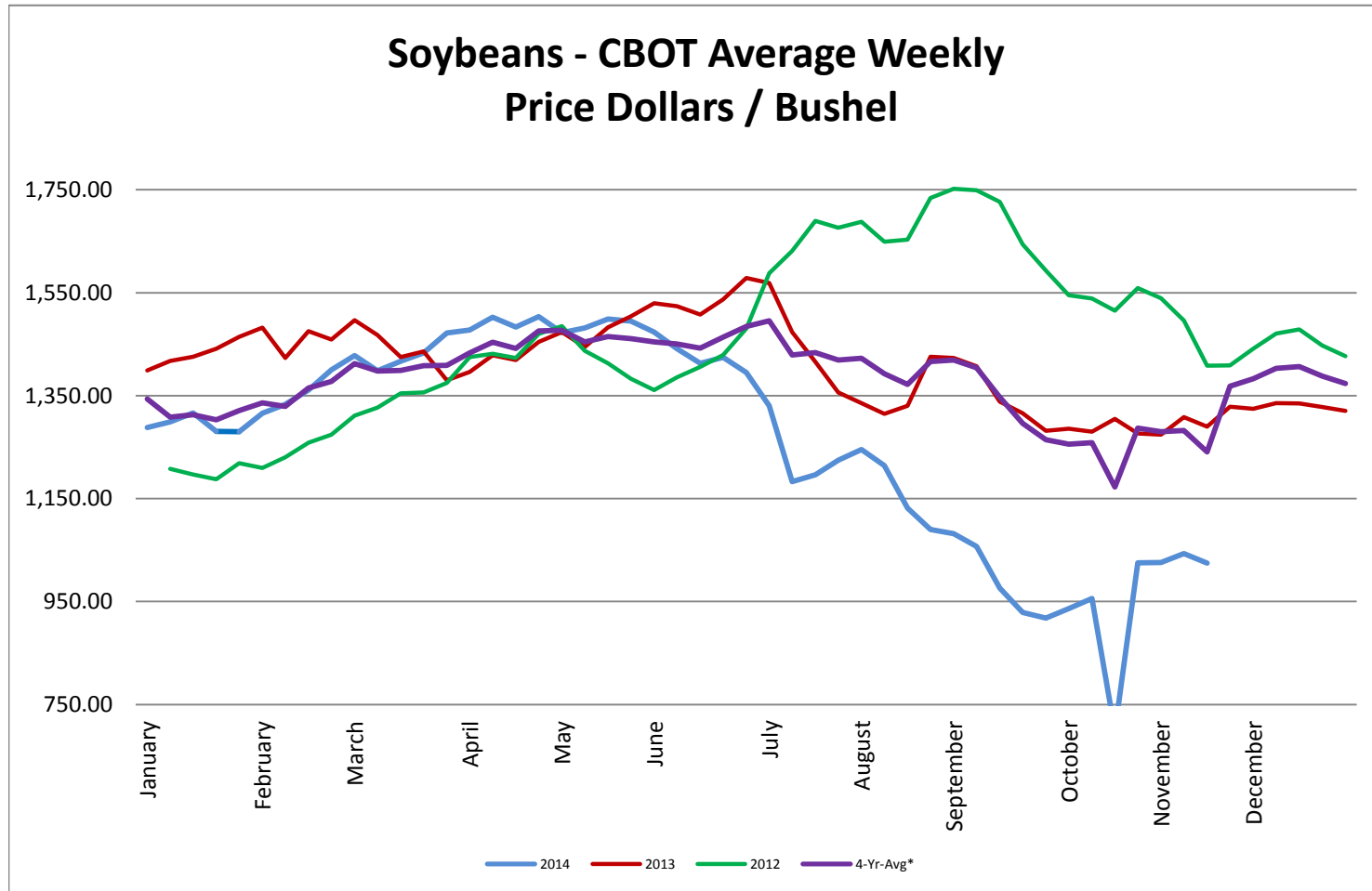
* Used as the indexing unit of measure for this exchange rate

Commodity Information: Commodity information found in this sheet is publically available. It can be found from numerous sources, all of which are noted. This report is for informational purposes only. Please do not make hedging or buying decisions based on this report. Please note that rounding can affect the percent of change values.* Paul's Currency Index compares the U.S. Dollar to five other currencies, Euro, British Pound, Swiss Frank, Canadian Dollar, and Chinese Yuan.

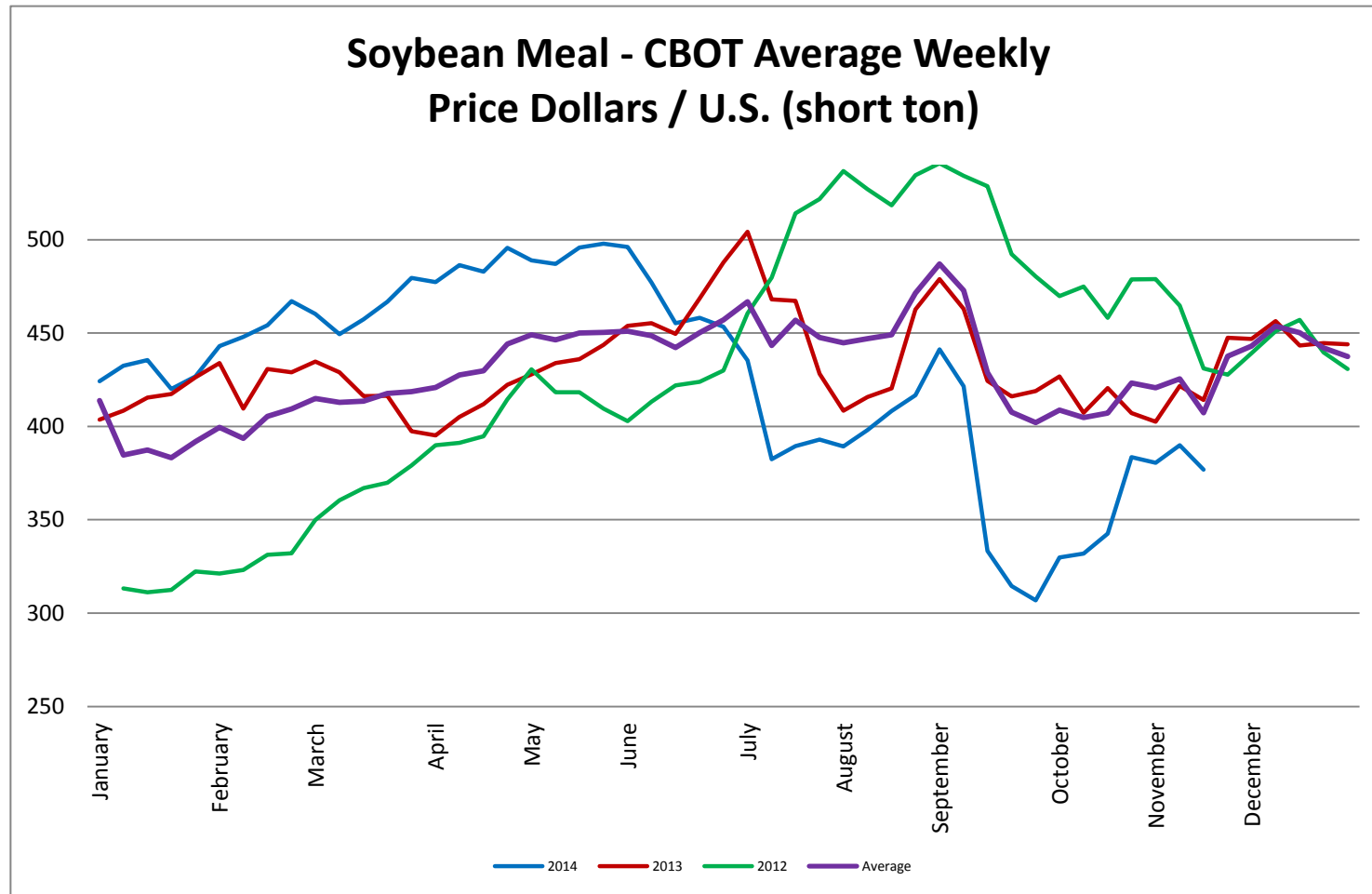
Corn - CBOT Weekly Futures Price



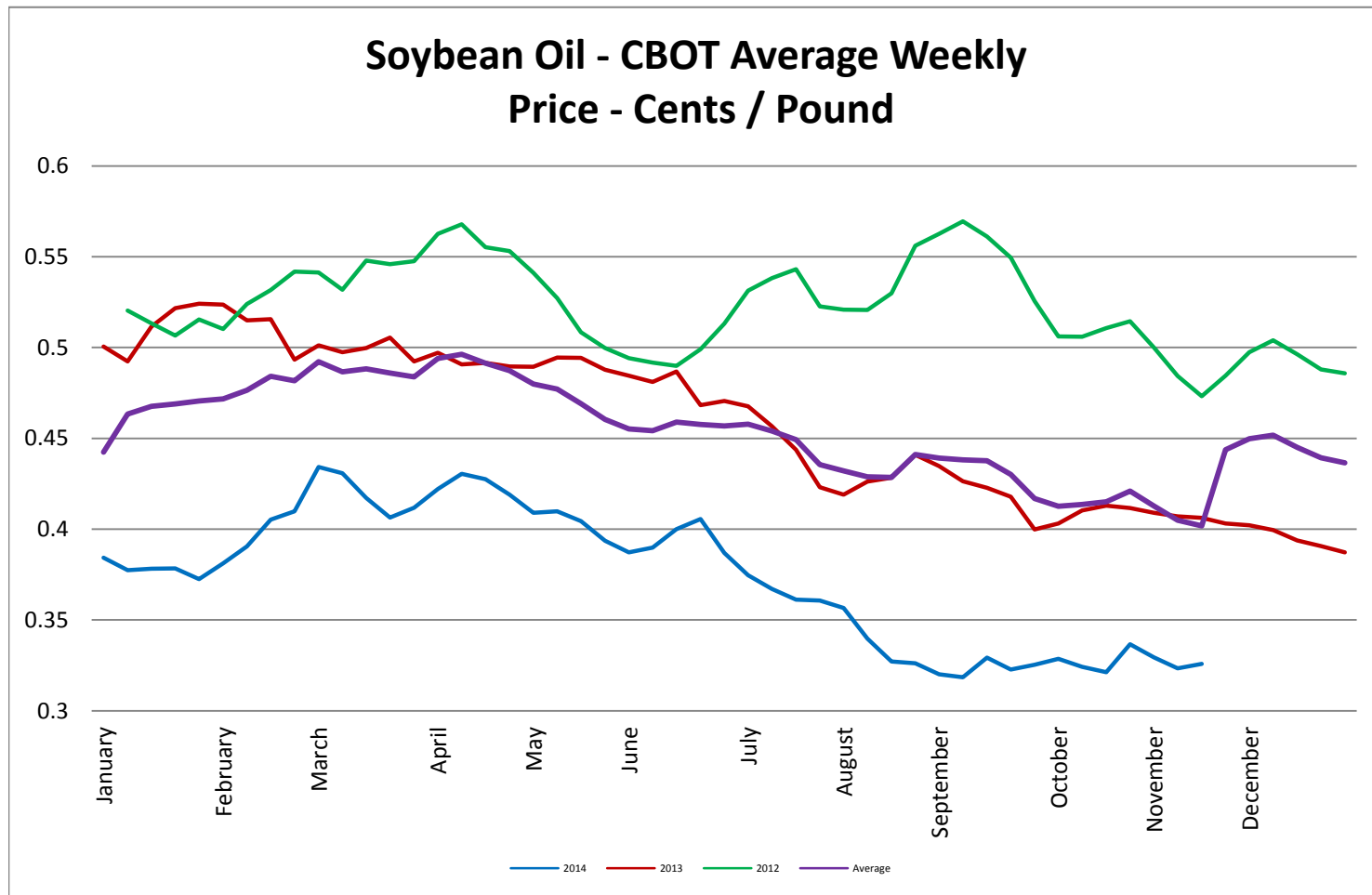
Soybeans - CBOT Weekly Average Price - Dollars / Bushel



Soybean Meal - CBOT Weekly Average Price - Dollars / US Ton

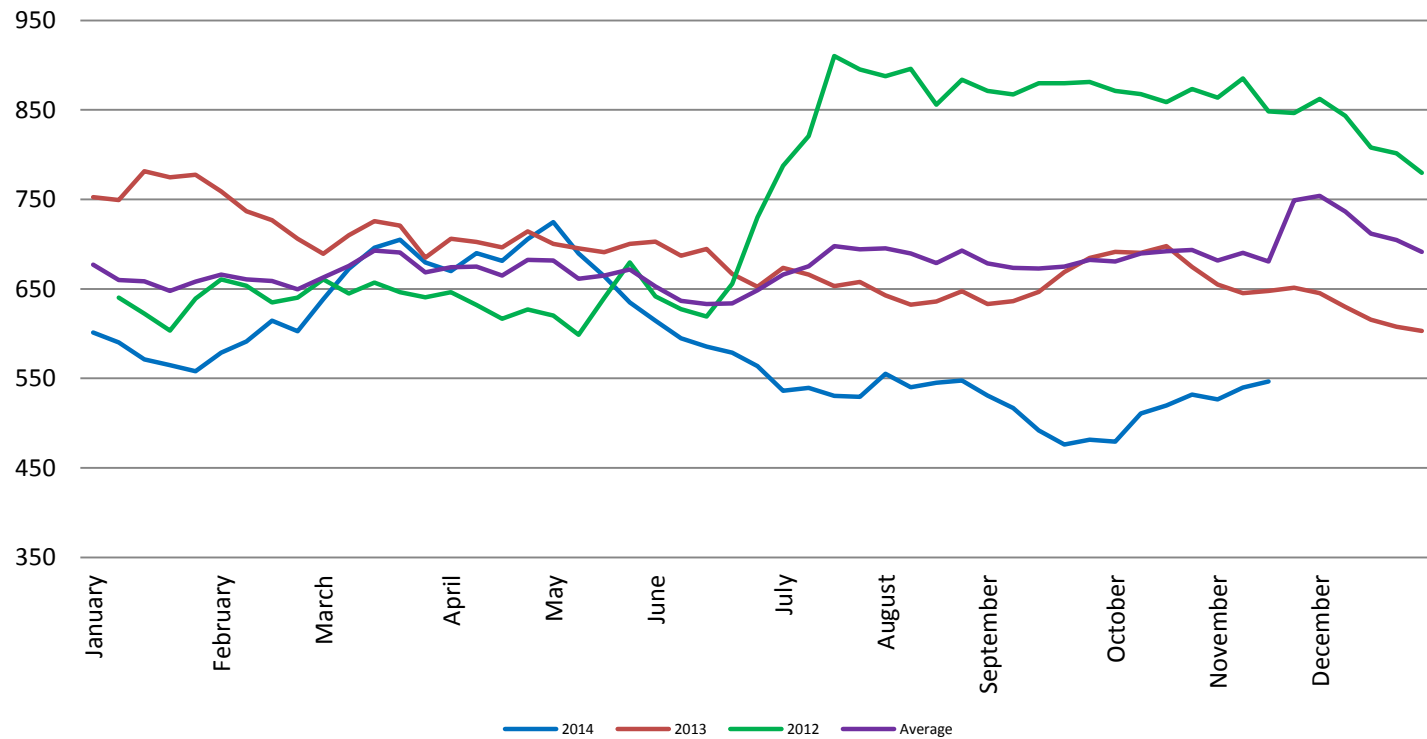


Soybean Oil - CBOT Weekly Average Price - Cents / Pound

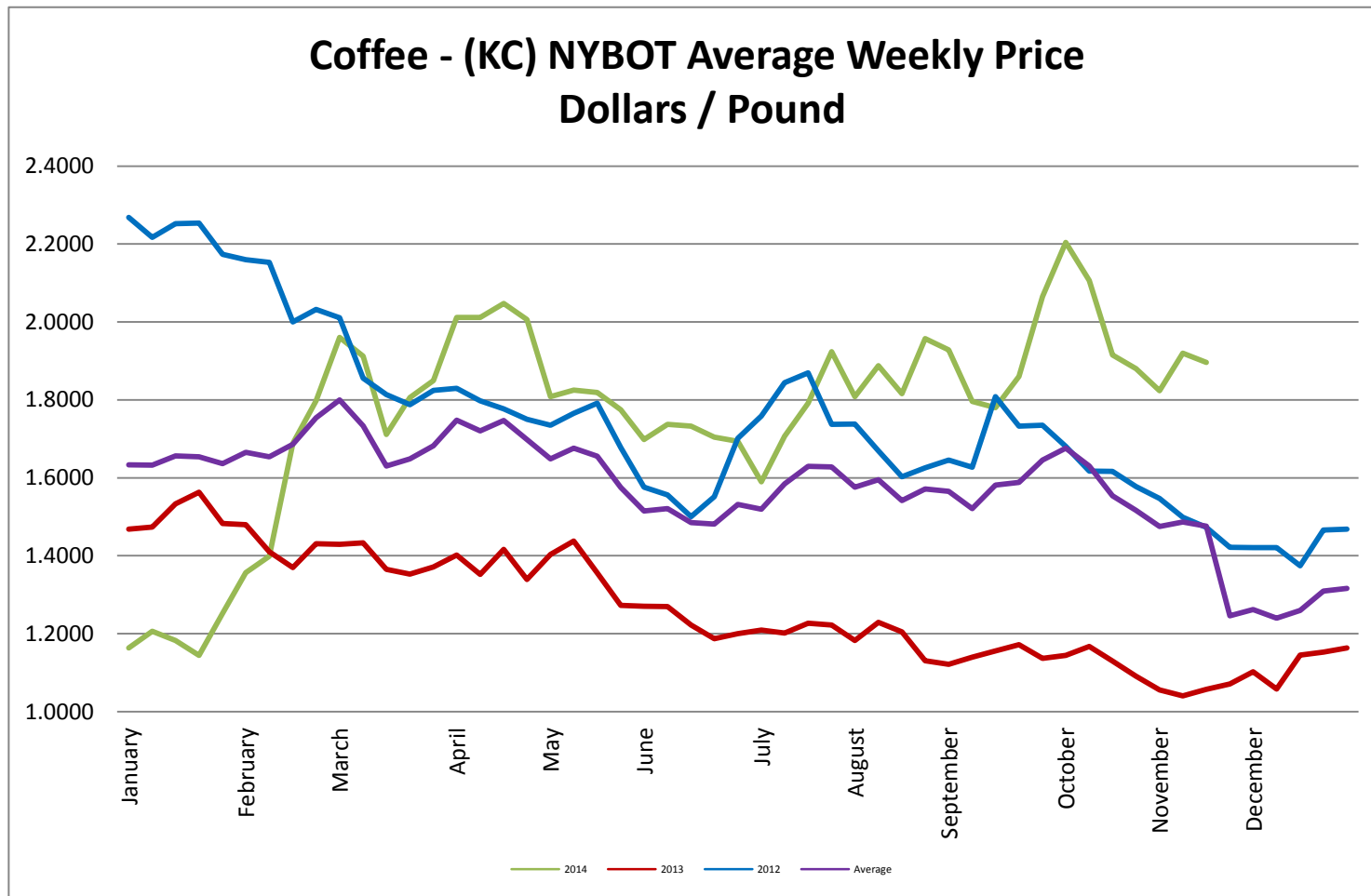


Wheat - CBOT Weekly Average Price - Dollars / Bushel

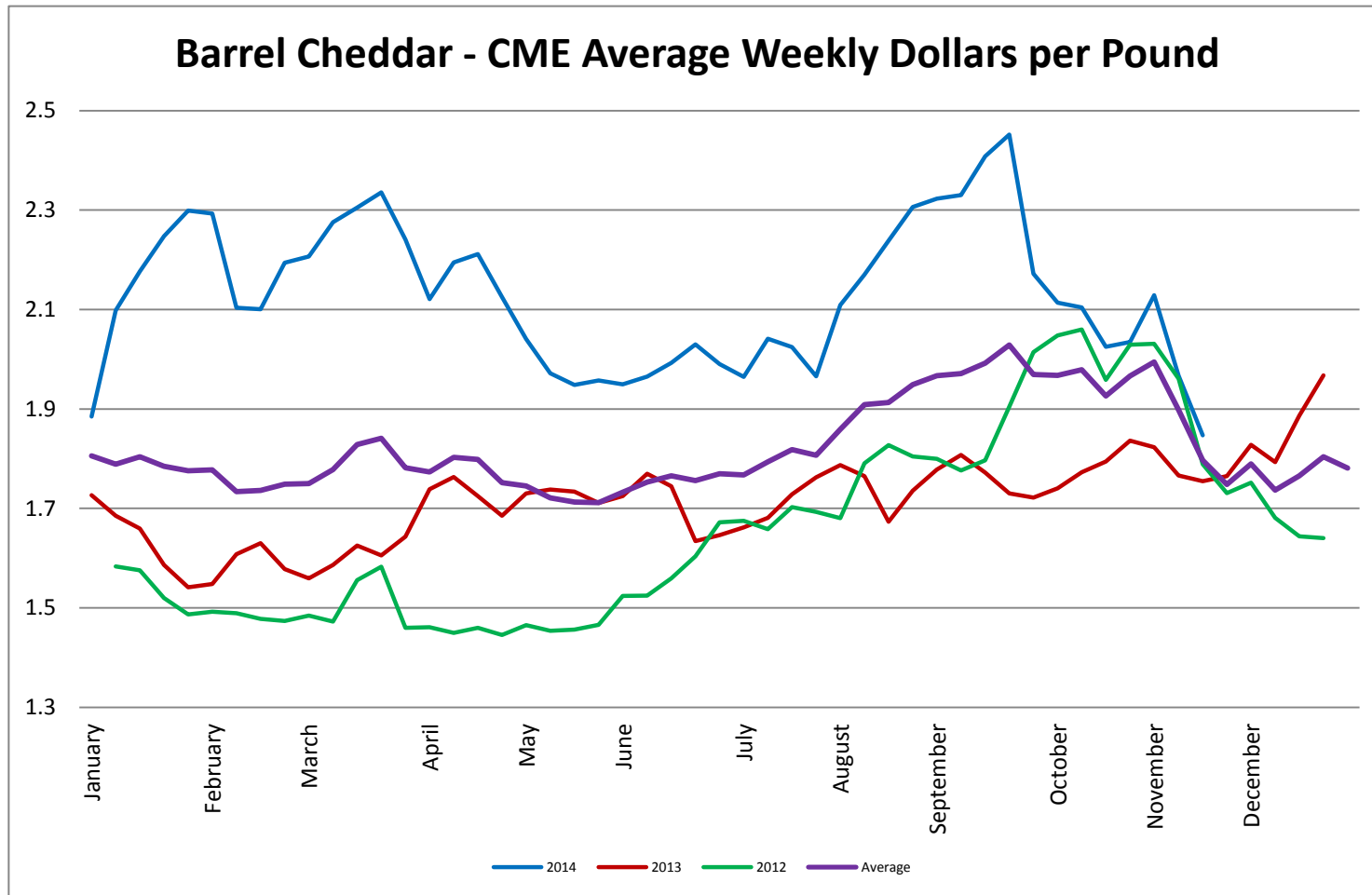
Wheat - CBOT Average Weekly
Price - Dollars / Bushel



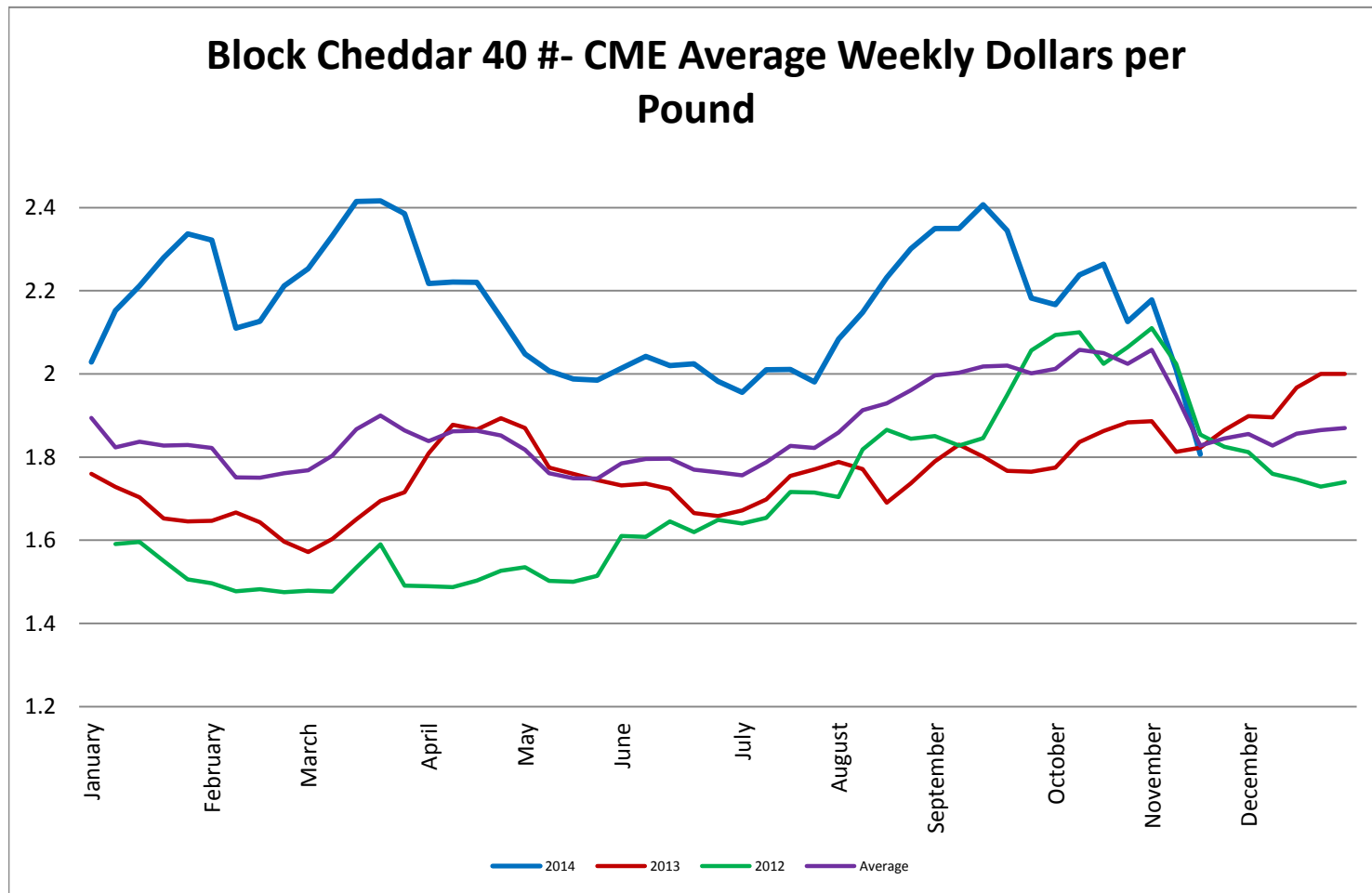
Coffee - (KC) NYBOT Average Weekly Price - Dollars per Pound



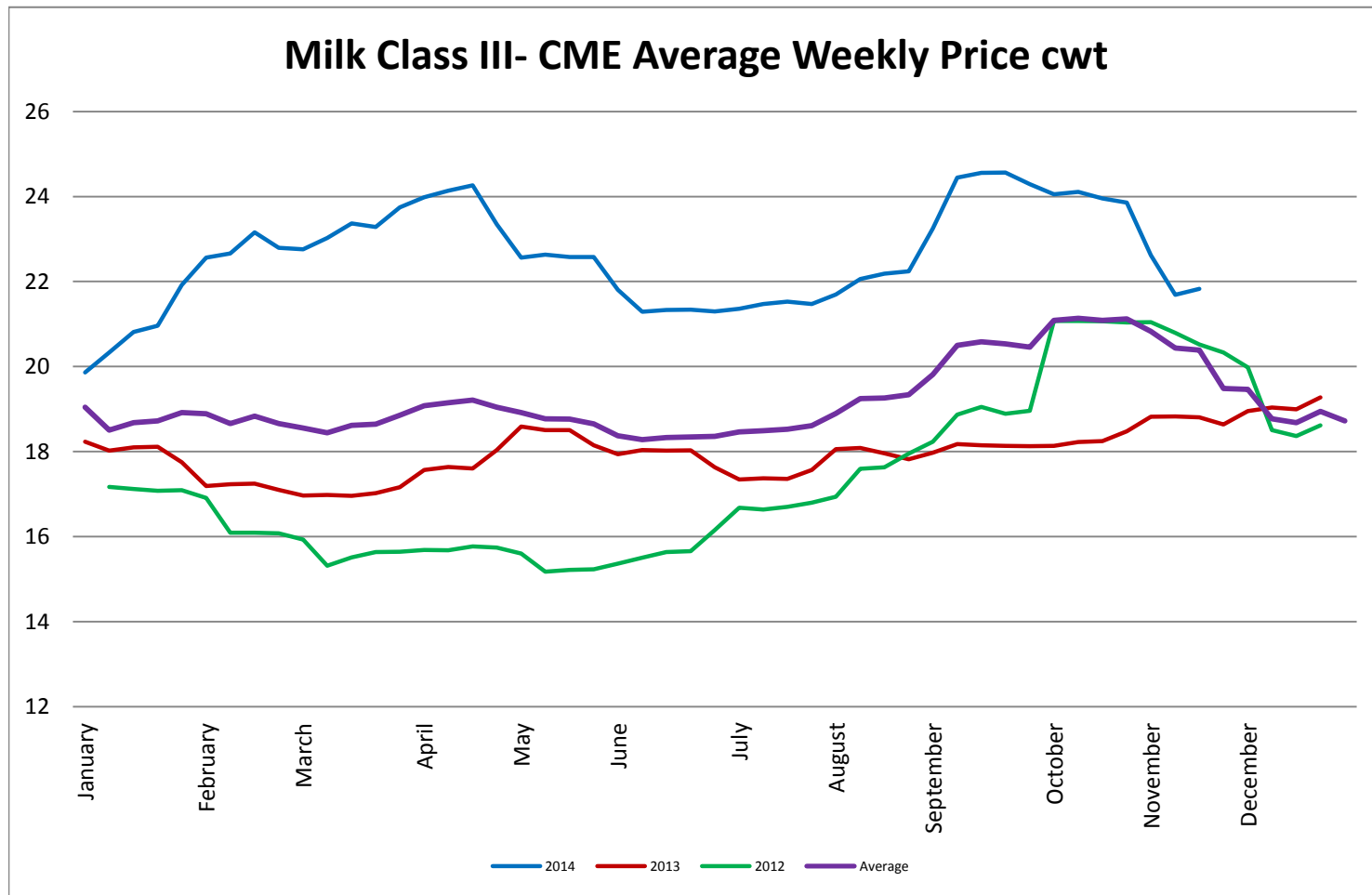
Barrel Cheddar - CME Average Weekly Price / Pound



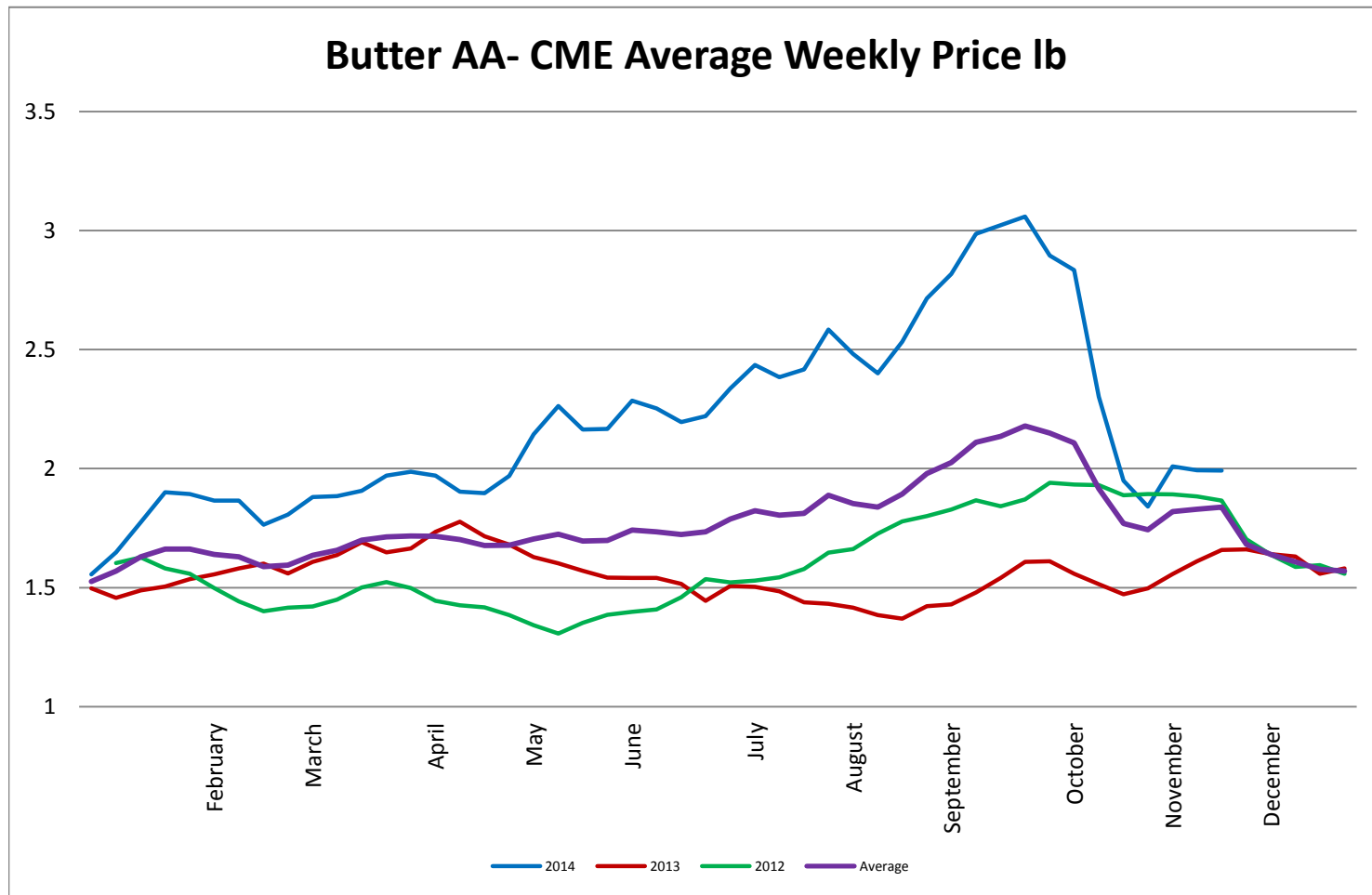
40 LB Block Cheddar - CME Average Weekly Price / Pound



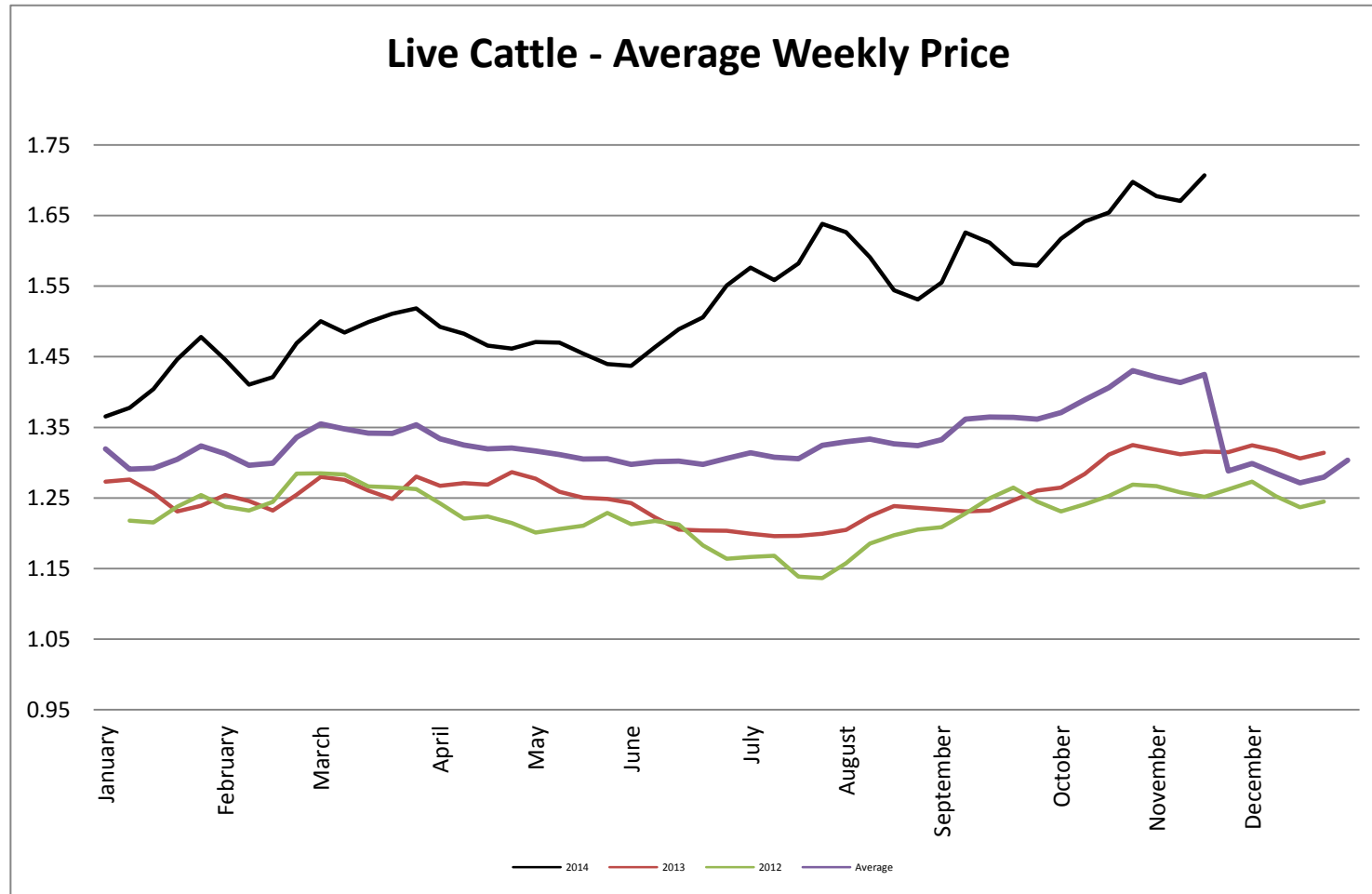
Milk Class III - CME Average Weekly Price CWT



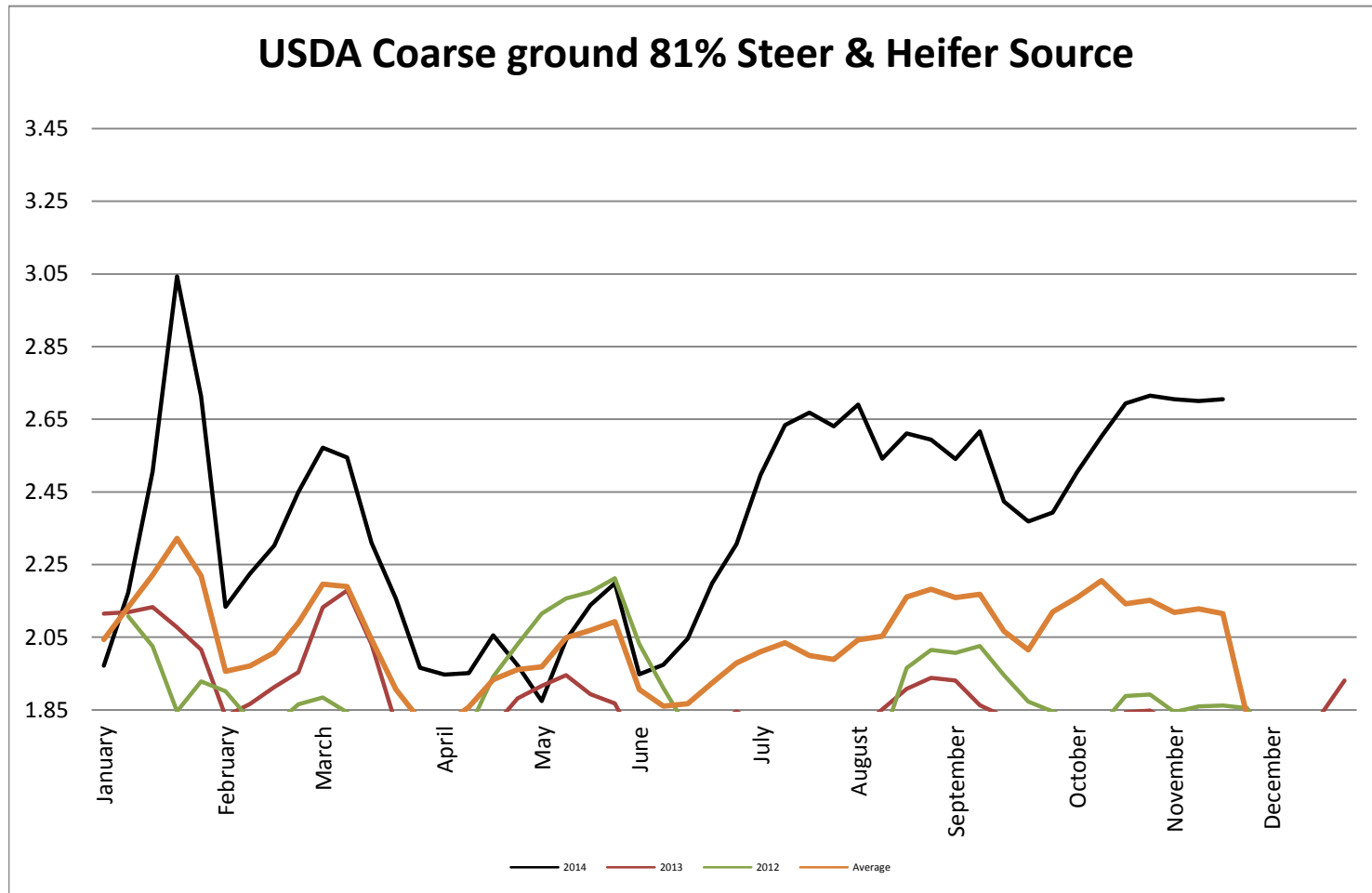
Butter AA - CME Average Weekly Price lb



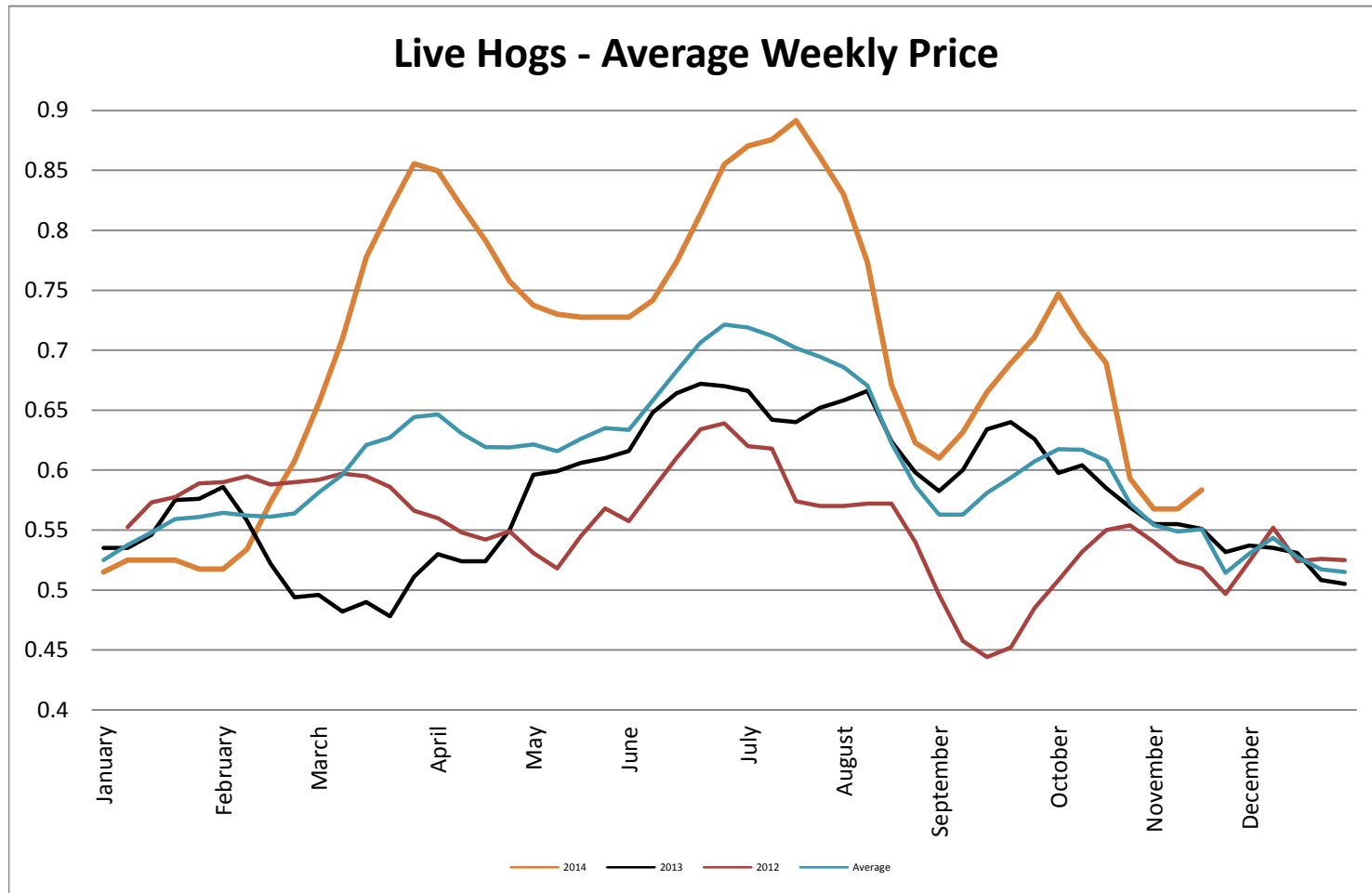
Live Cattle - Average Weekly Price USDA - 6 State Average



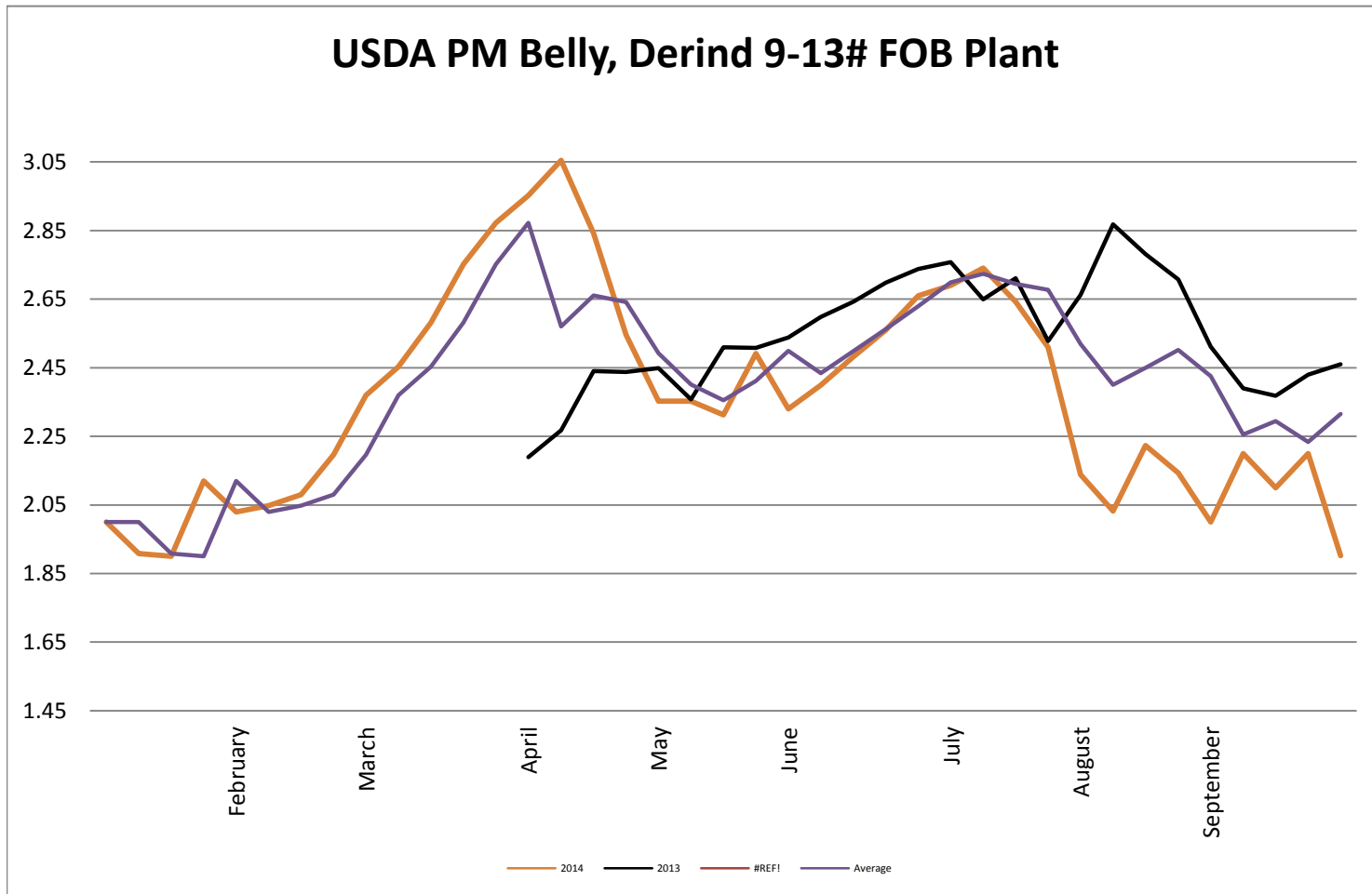
USDA Coarse ground 81% Steer & Heifer Source



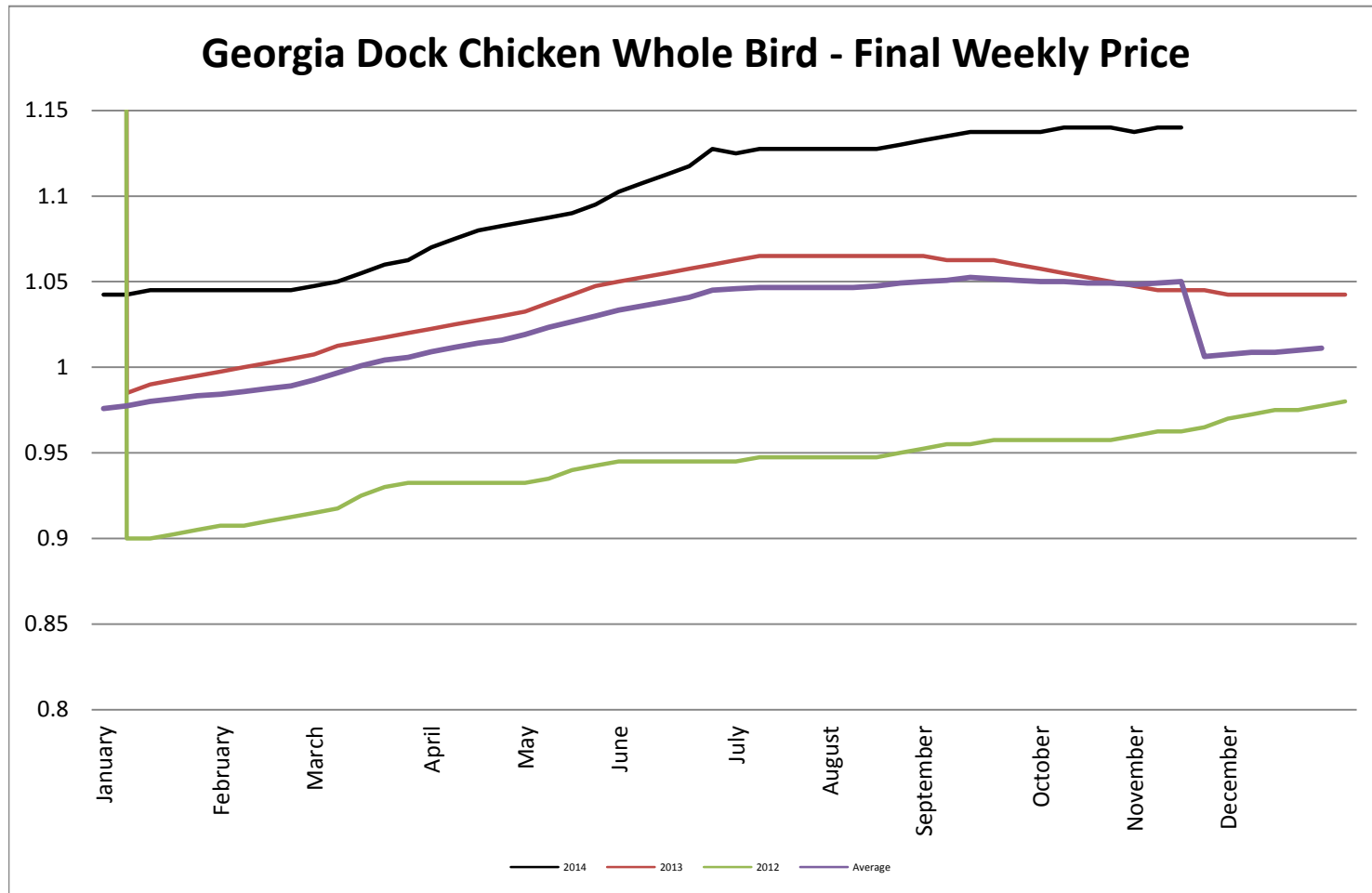
USDA Live Hogs - Average Weekly Price



USDA PM Belly, Derind 9-13# FOB Plant

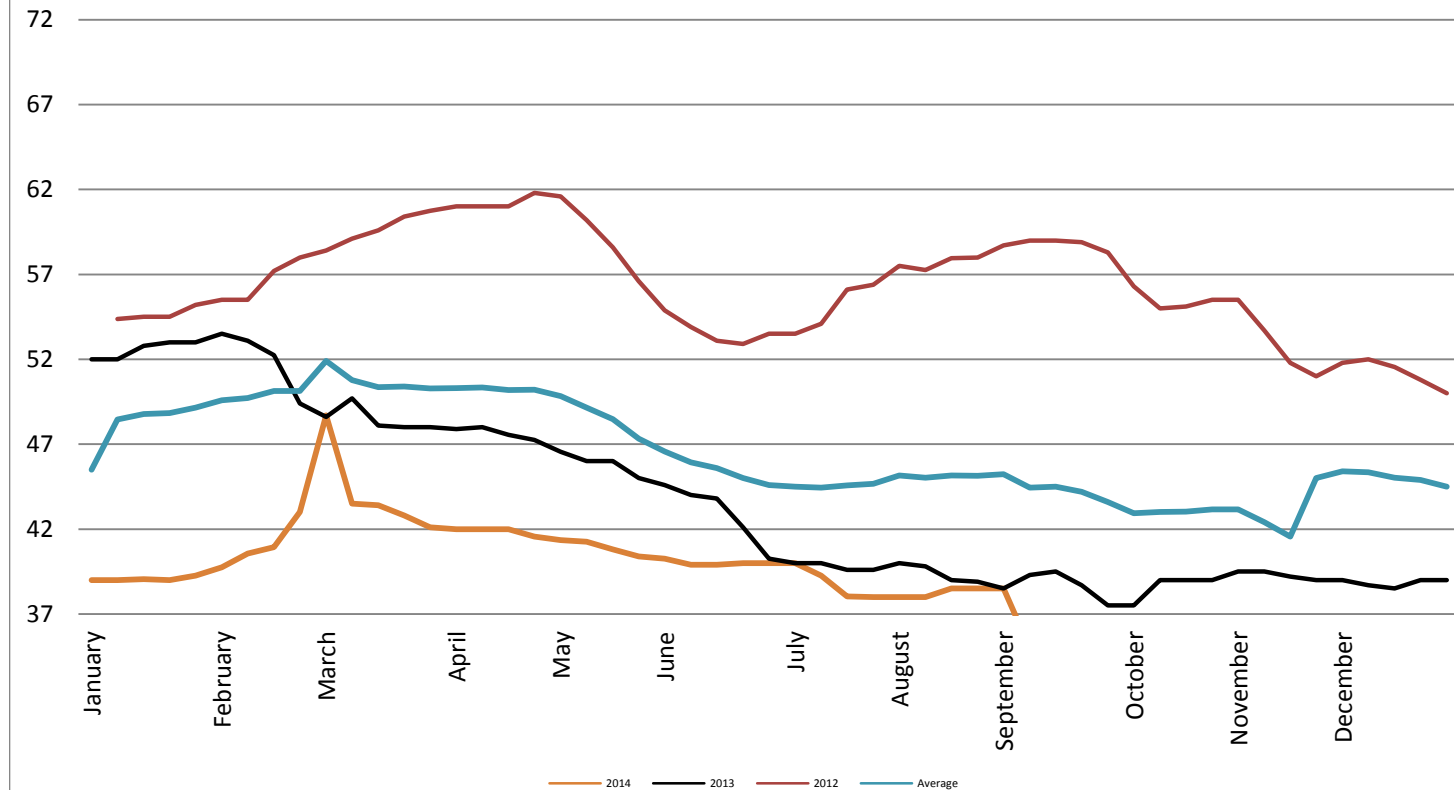


Georgia Dock Chicken - Final Weekly Price

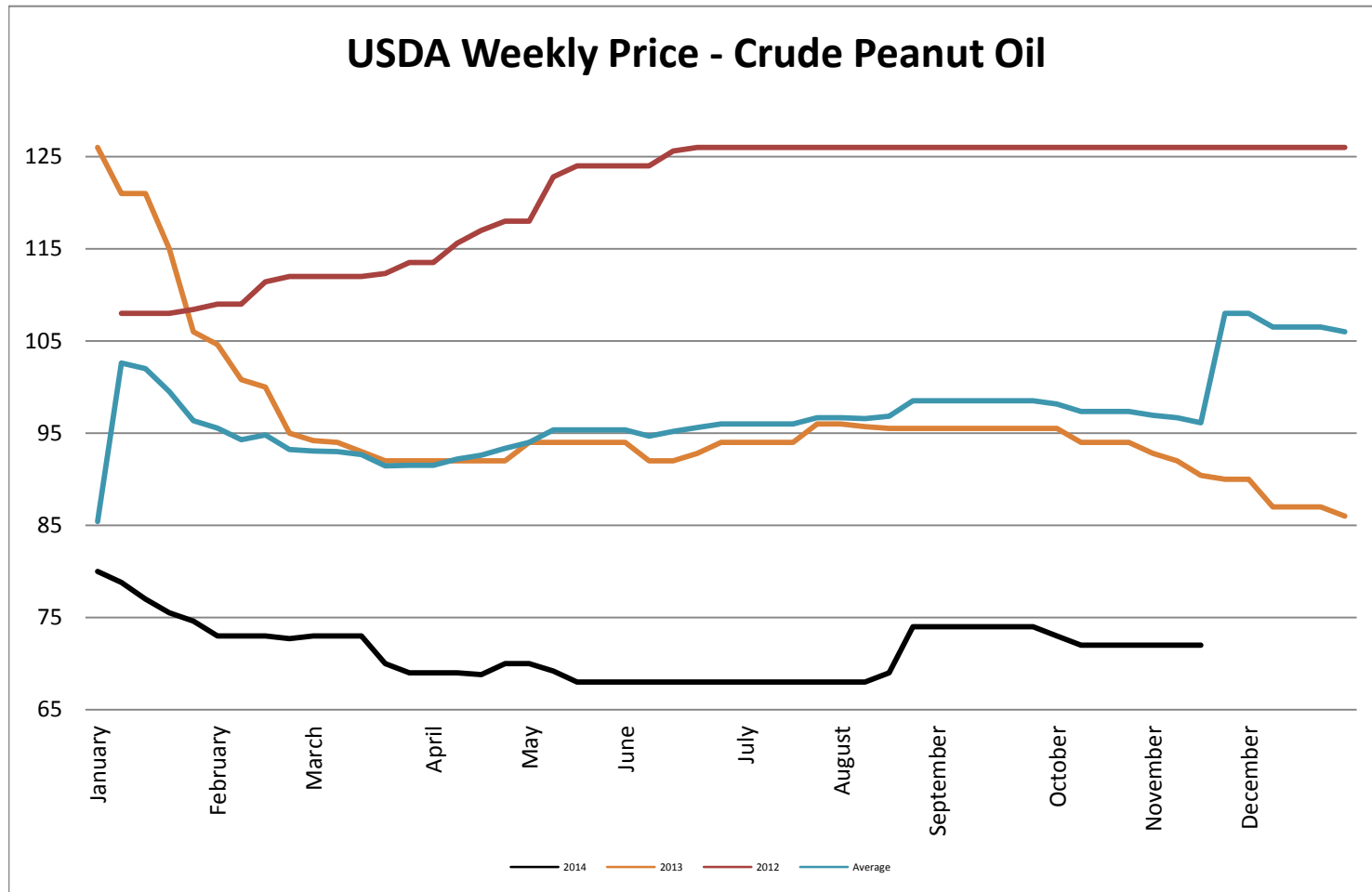


USDA Weekly Price - Crude Corn Oil

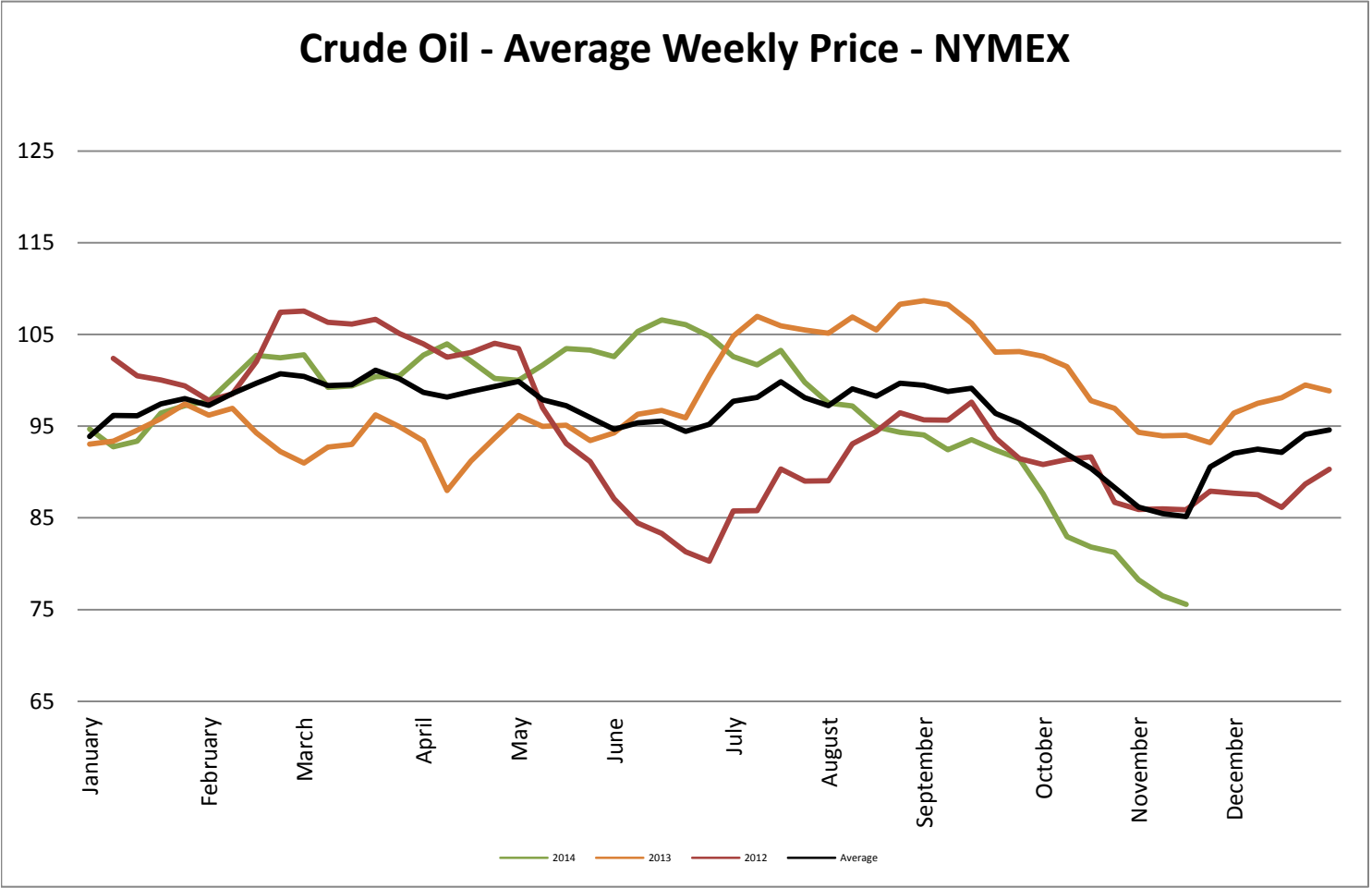
USDA Illinois Weekly Price - Crude Corn Oil



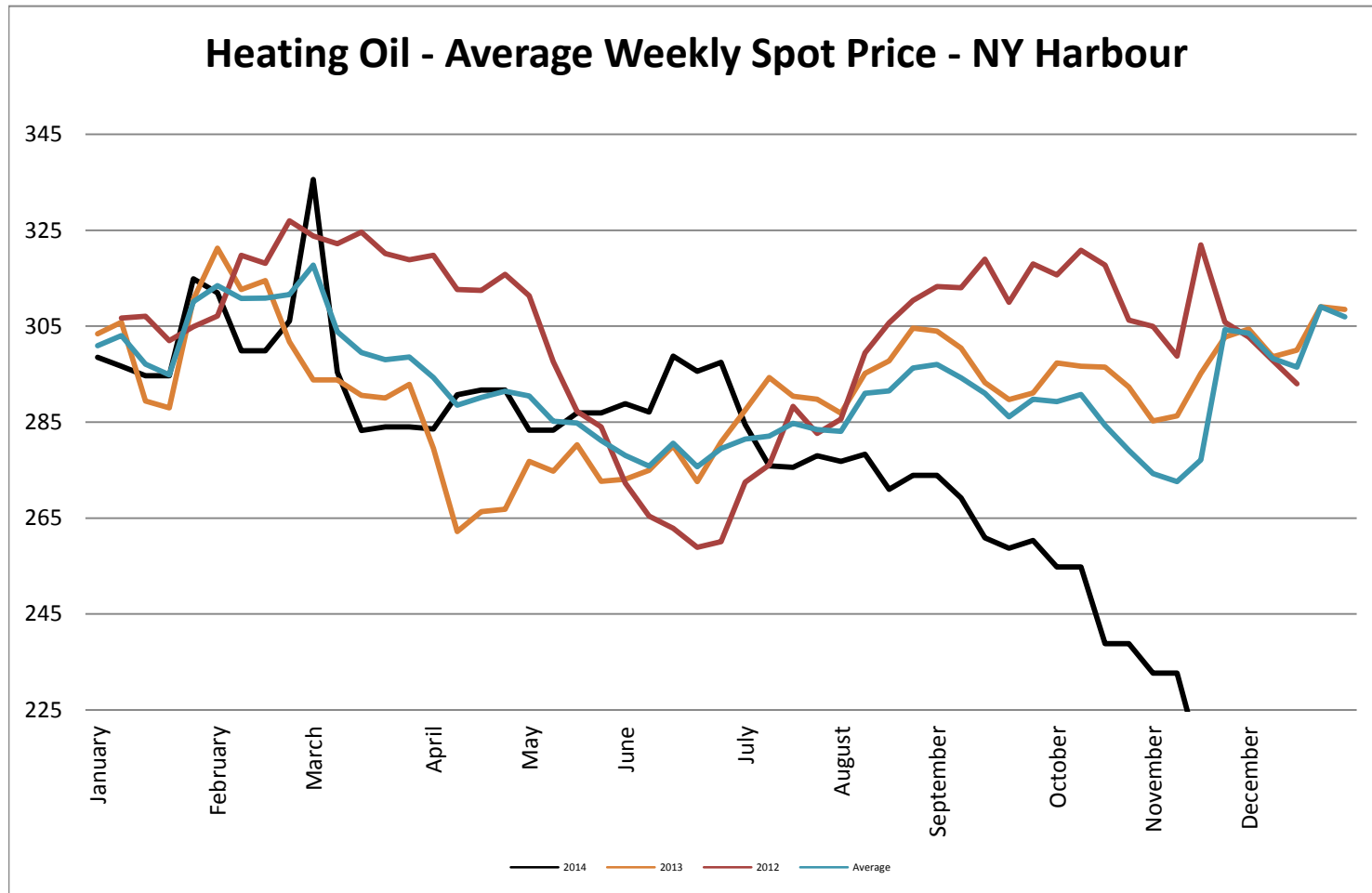
USDA Weekly Price - Crude Peanut Oil



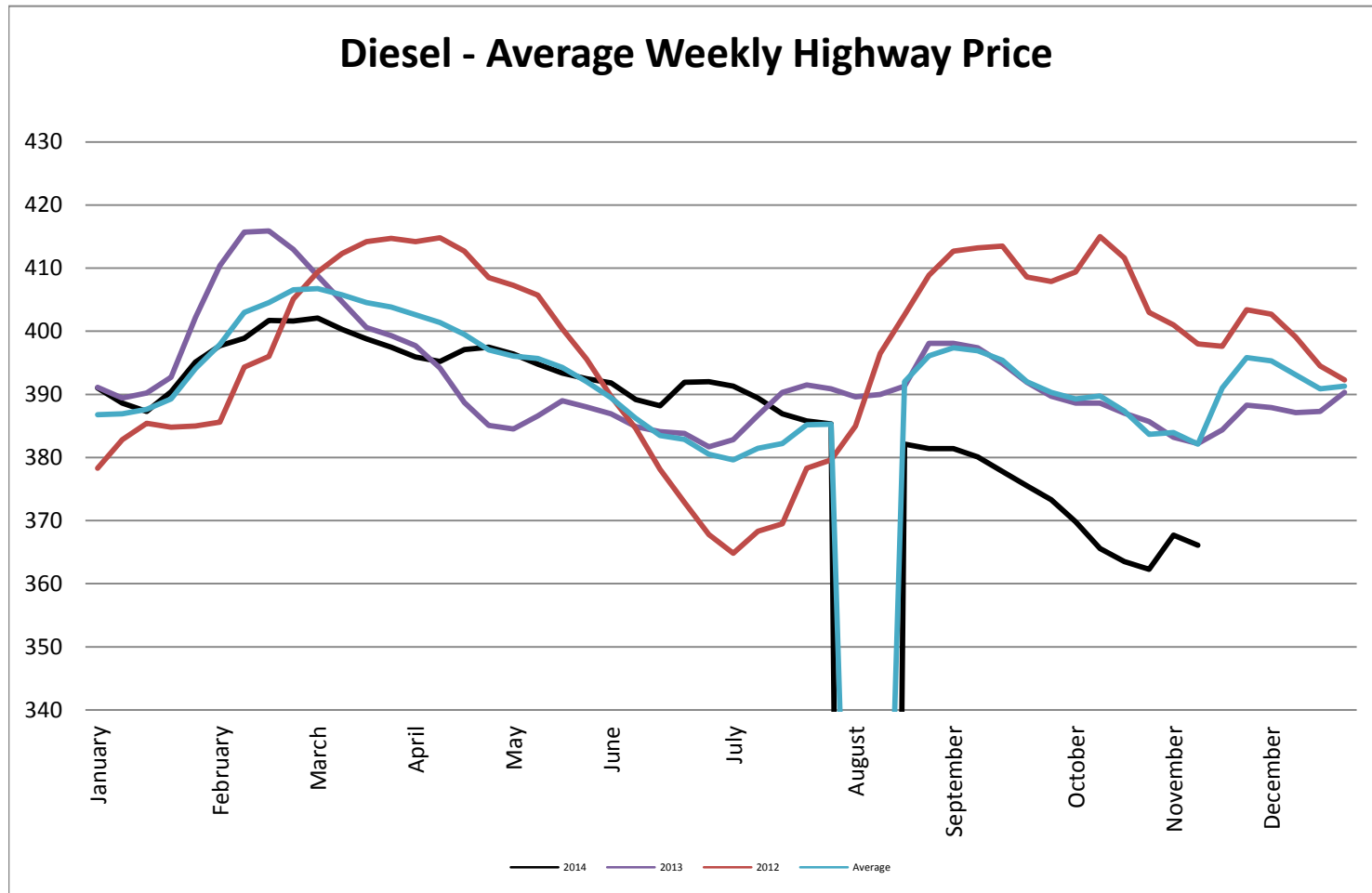
Crude Oil - Average Weekly Price - NYMEX



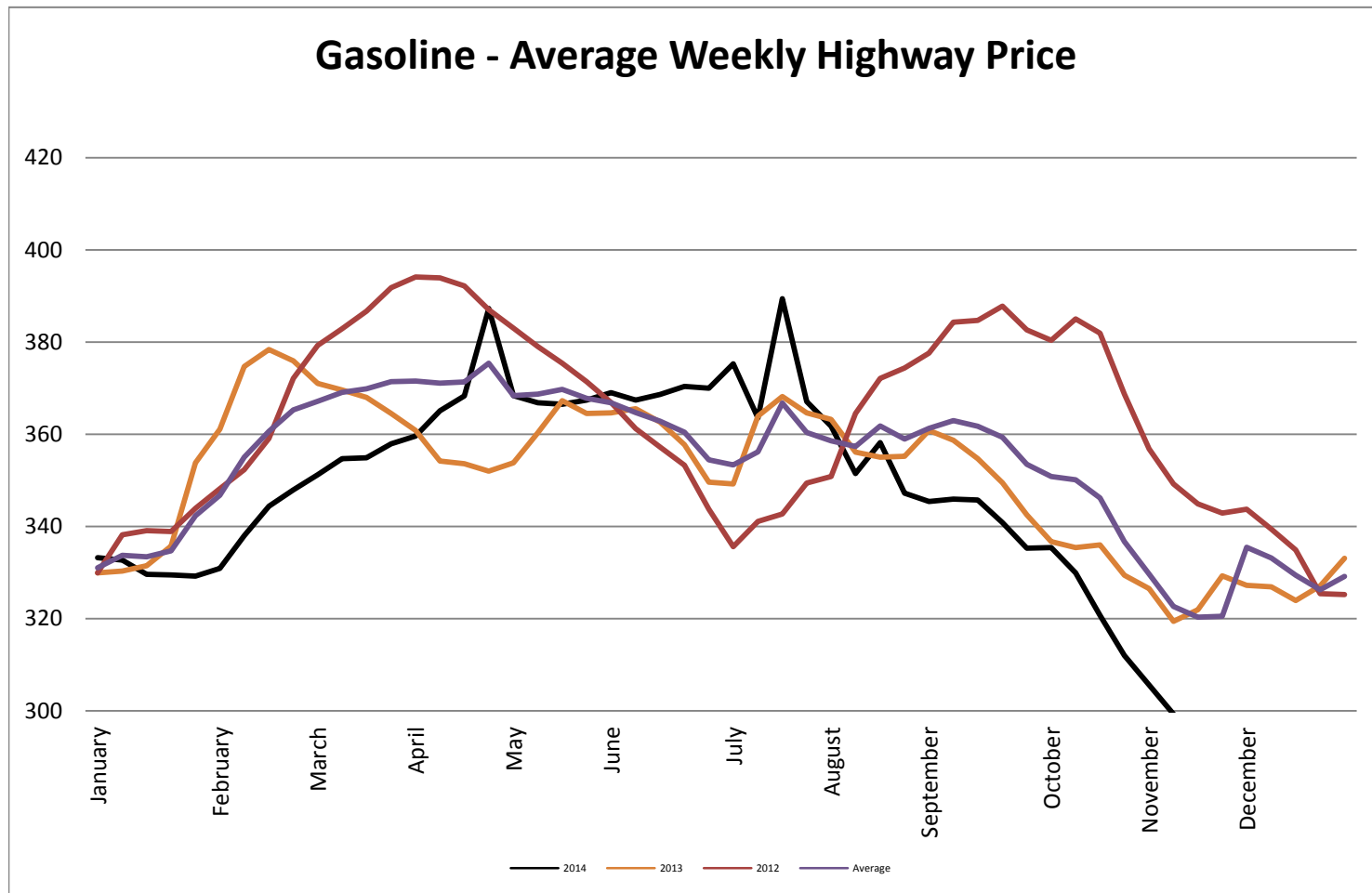
Heating Oil - Average Weekly Spot Price - NY Harbour



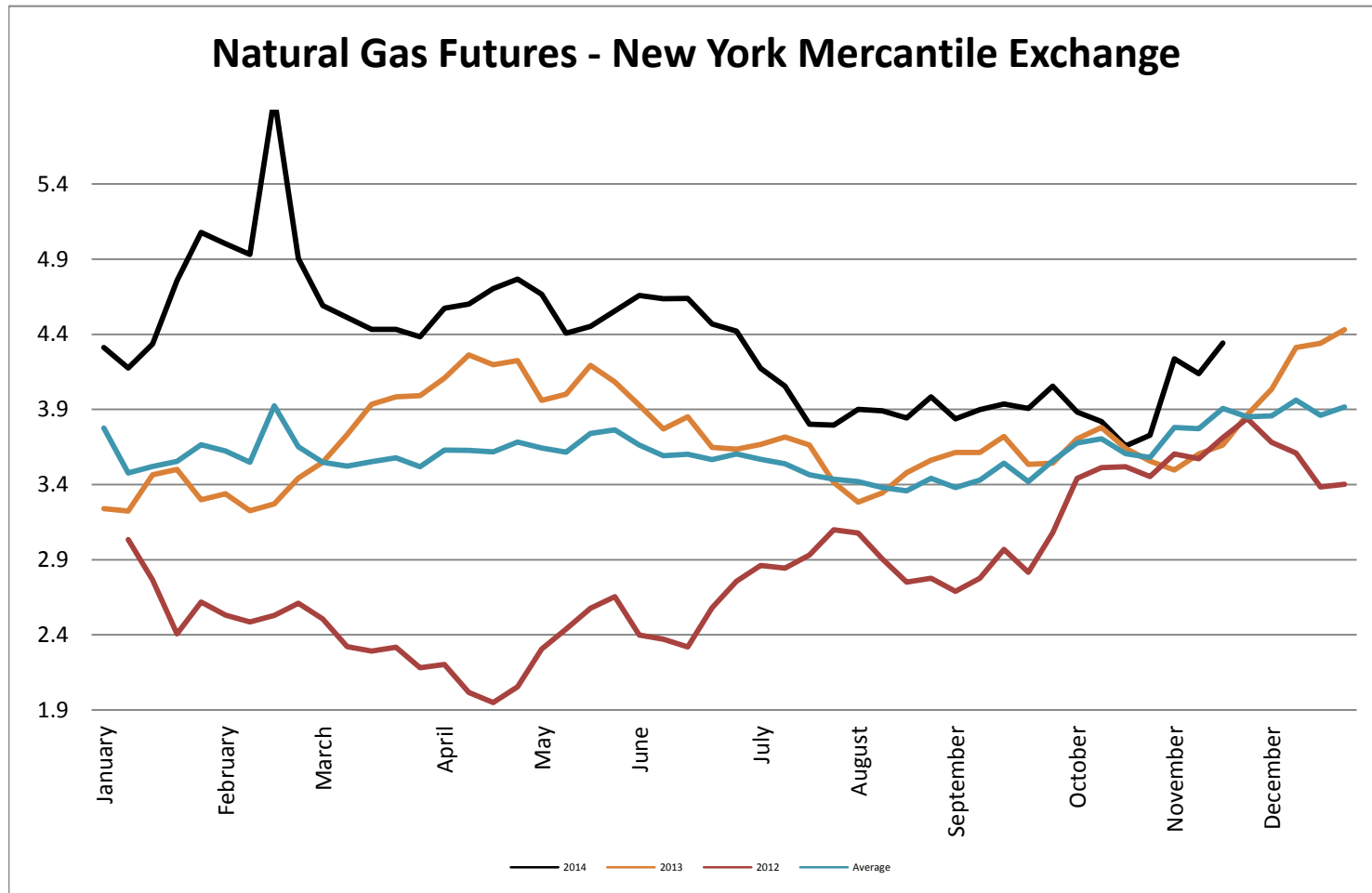
Diesel - Average Weekly Highway Price



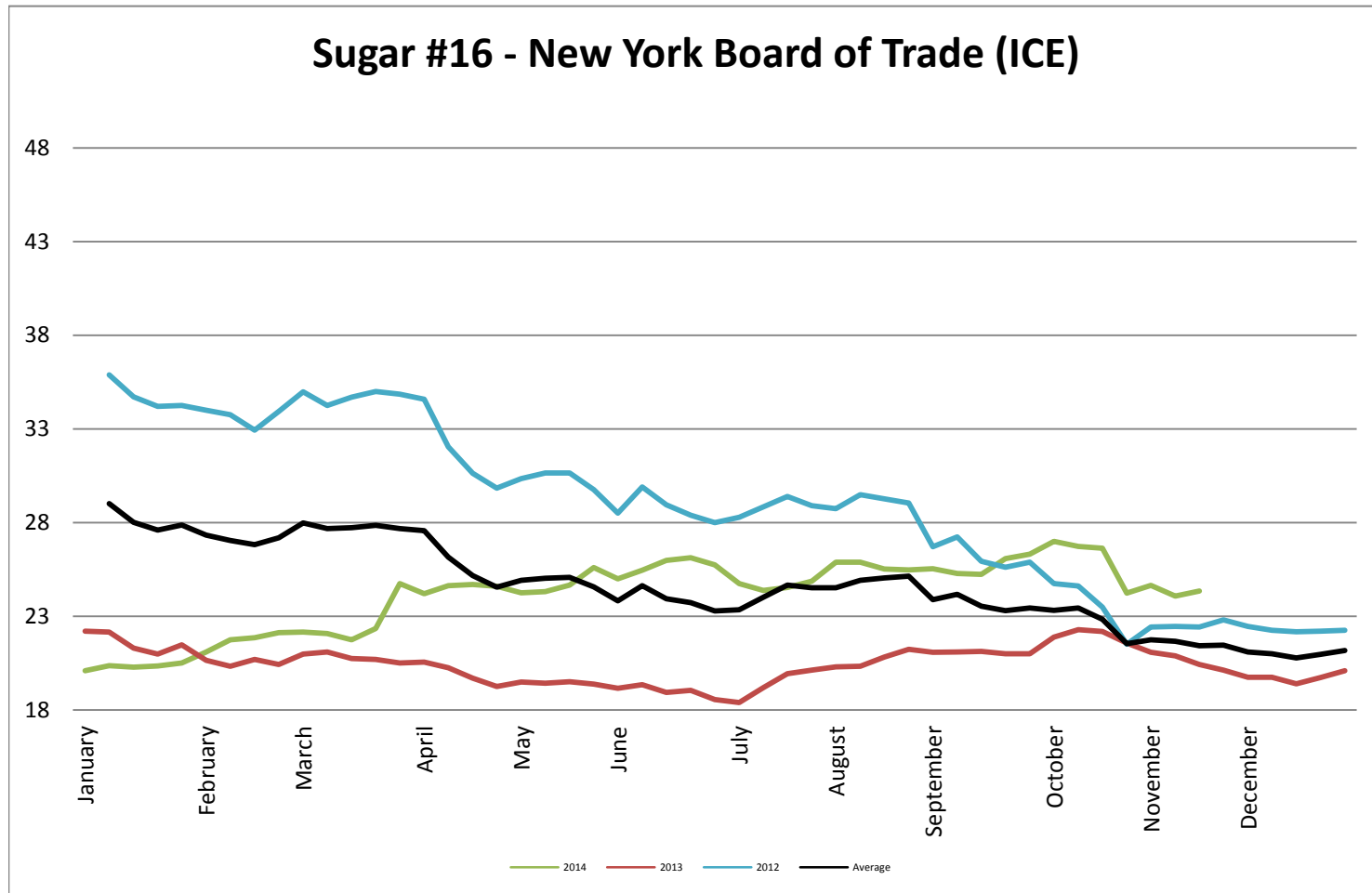
Gasoline Unleaded - Average Weekly Highway Price



Natural Gas Futures - New York Mercantile Exchange



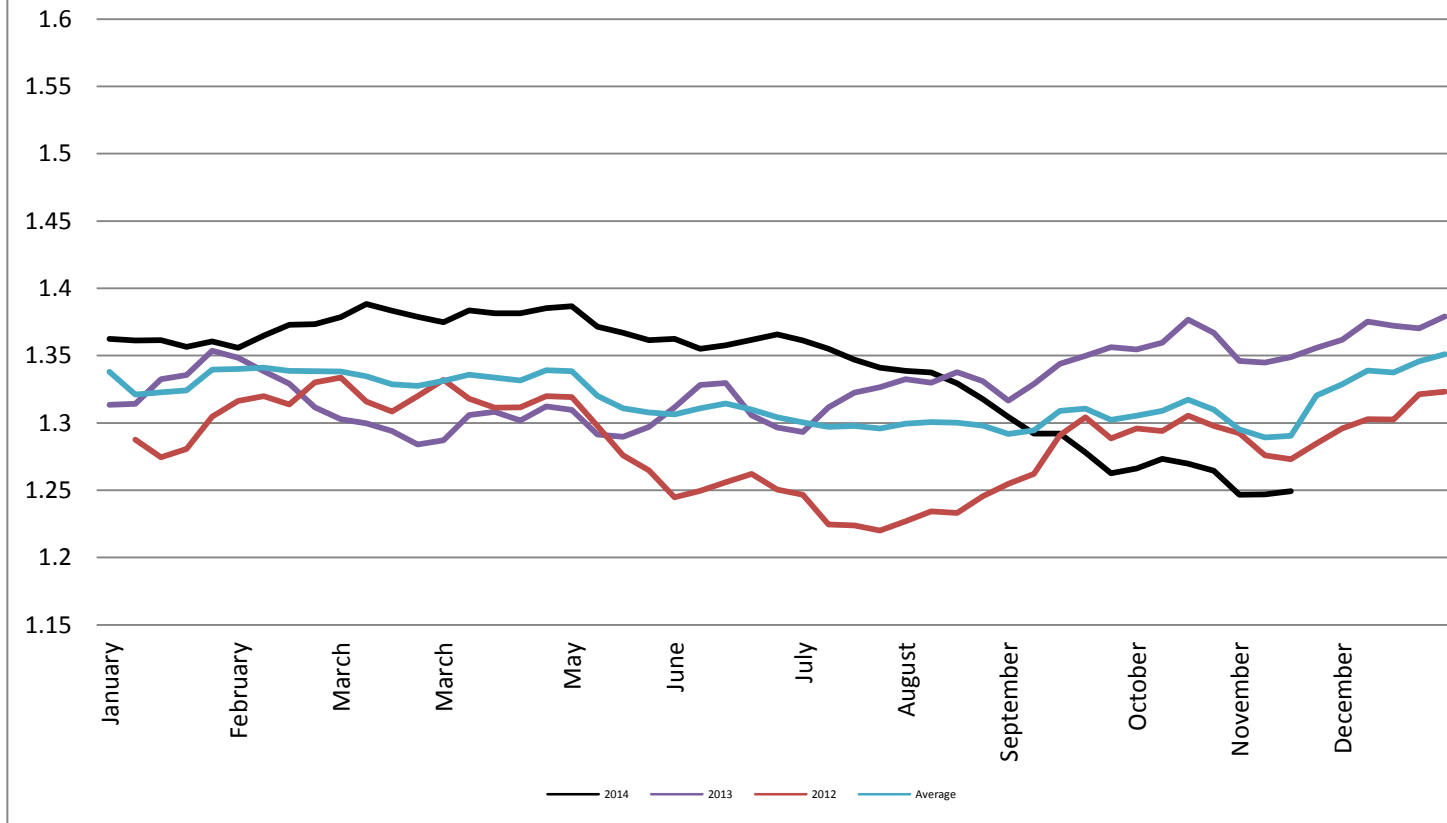
Sugar #16 - New York Board of Trade (ICE)



Foreign Exchange Rate - Euro, EMU Members

Foreign Exchange Rate - Euro, EMU Members

Federal Reserve Bank of New York



Foreign Exchange Rate - Canadian Dollar

