



NEWS RELEASE



**Transmission of material in this release is embargoed until
8:30 a.m. (EST), Wednesday, January 15, 2014**

USDL-14-0036

Technical information: (202) 691-7705 • ppi-info@bls.gov • www.bls.gov/ppi

Media contact: (202) 691-5902 • PressOffice@bls.gov

PRODUCER PRICE INDEXES – DECEMBER 2013

The Producer Price Index for finished goods advanced 0.4 percent in December, seasonally adjusted, the U.S. Bureau of Labor Statistics reported today. Prices for finished goods declined 0.1 percent in November and 0.2 percent in October. At the earlier stages of processing, prices received by producers of intermediate goods rose 0.6 percent in December, and the crude goods index climbed 2.4 percent. On an unadjusted basis, prices for finished goods increased 1.2 percent in 2013 compared with a 1.4-percent advance in 2012. (See table A.)

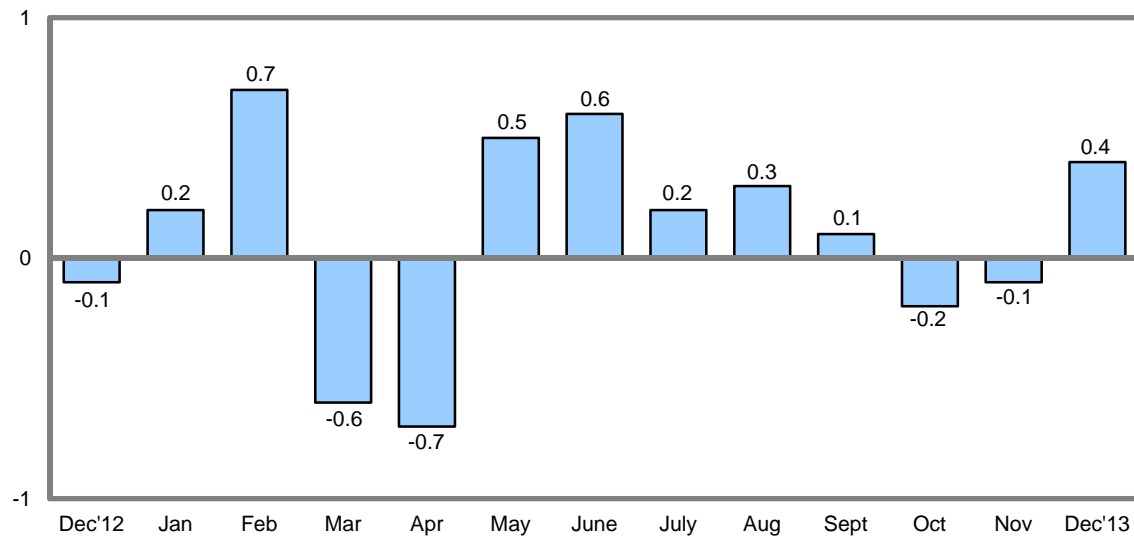
Table A. Monthly and 12-month percent changes in selected stage-of-processing price indexes, seasonally adjusted

Month	Finished goods					Intermediate goods	Crude goods
	Total	Foods	Energy	Except foods and energy	Change in finished goods from 12 months ago (unadj.)		
2012							
Dec.....	-0.1	-0.6	-0.4	0.2	1.4	0.0	1.3
2013							
Jan.....	0.2	0.7	-0.6	0.2	1.5	0.2	0.0
Feb.....	0.7	-0.7	3.2	0.1	1.8	1.2	0.1
Mar.....	-0.6	0.9	-3.6	0.2	1.1	-1.2	-1.7
Apr.....	-0.7	-1.0	-2.5	0.1	0.5	-0.6	-0.9
May.....	0.5	0.7	1.1	0.1	1.6	0.0	2.2
June.....	0.6	-0.1	2.5	0.2	2.3	0.4	-0.2
July.....	0.2	0.3	0.2	0.1	2.1	0.1	0.9
Aug. ¹	0.3	0.5	0.7	-0.1	1.3	0.1	-1.8
Sept. ¹	0.1	-0.8	0.7	0.1	0.3	0.2	0.2
Oct.....	-0.2	0.8	-1.5	0.2	0.3	-0.4	-0.9
Nov.....	-0.1	0.0	-0.4	0.1	0.7	-0.5	-2.6
Dec.....	0.4	-0.6	1.6	0.3	1.2	0.6	2.4

¹ Some of the figures shown above and elsewhere in this release may differ from those previously reported because data for August 2013 have been revised to reflect the availability of late reports and corrections by respondents.

**Chart 1. Monthly percent changes in the Producer Price Index for finished goods, seasonally adjusted:
December 2012 – December 2013**

Percent change



**Chart 2. 12-month percent changes in the Producer Price Index for finished goods, not seasonally adjusted:
December 2012 – December 2013**

Percent change

