

Key Commodity Report Weekly

December 31, 2012

Commodity Activity - Weekly Average

12/24/2012	This Week	Last Week	YTD Avg	Last Year	vs. Last Week	vs. Last Year
CME Group						
Corn	↓ 695.75	709.10	694.10	640.06	-1.88%	8.70%
Soybean	↓ 1426.8	1447.8	1463.2	1196.0	-1.45%	19.29%
Soy Meal	↓ 430.83	439.66	429.30	308.45	-2.01%	39.68%
Soybean Oil	↓ 0.4859	0.4880	0.5224	0.5171	-0.43%	-6.03%
Rough Rice	↓ 14.96	15.21	15.11	14.61	-1.64%	2.40%
Wheat	↓ 779.81	801.50	749.26	648.50	-2.71%	20.25%
Cheddar Barrel	↑ 1.683	1.641	1.657	1.570	2.56%	7.17%
Cheddar Block	↑ 1.740	1.729	1.698	1.563	0.64%	11.36%
Milk Class III	↓ 18.46	18.62	17.42	18.31	-0.88%	0.79%
Butter AA	↓ 1.498	1.558	1.602	1.595	-3.85%	-6.11%

Source: CME Group

USDA Weekly Prices

Live Cattle	↑ 1.261	1.242	1.228	1.243	1.51%	1.49%
Course Ground Beef	↑ 2.260	2.110	2.134	2.140	7.11%	5.61%
Live Hog	↓ 0.5250	0.5260	0.5542	0.5413	-0.19%	-3.01%
Pork Bellies	↔ 1.30	1.30	1.20	1.10	0.00%	18.18%
Chicken Whole (GA Dock)	↑ 0.9800	0.9775	0.9424	0.9000	0.26%	8.89%
Crude Corn Oil	↓ 50.00	50.80	56.20	54.00	-1.57%	-7.41%
Crude Peanut Oil	↔ 126.00	126.00	120.72	108.00	0.00%	16.67%

Source: USDA

NYMEX Futures & Retail

Crude Oil	↑ 90.32	88.69	94.29	98.27	1.84%	-8.09%
Heating Oil No.2 Spot	↔ 293.03	293.03	307.00	289.65	0.00%	1.17%
On Highway Diesel	↓ 392.30	394.50	395.61	379.10	-0.56%	3.48%
On Highway Gasoline	↓ 325.20	325.40	361.73	325.80	-0.06%	-0.18%
Natural Gas	↓ 3.390	3.402	2.817	3.053	-0.35%	11.04%

Source: New York Mercantile Exchange

Federal Reserve

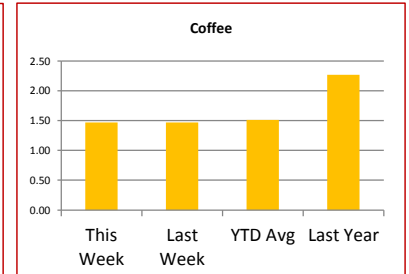
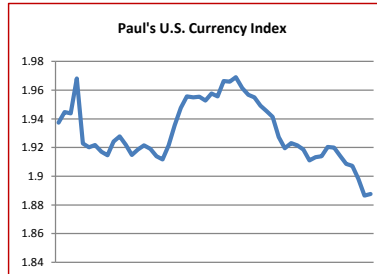
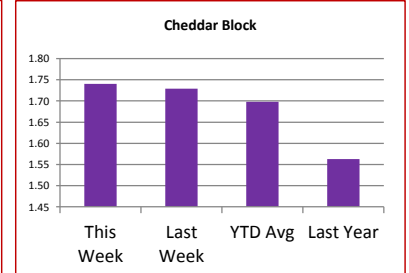
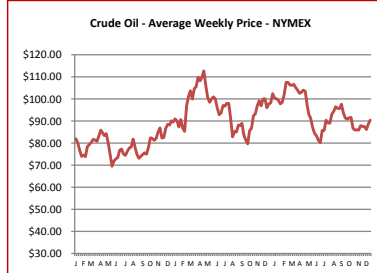
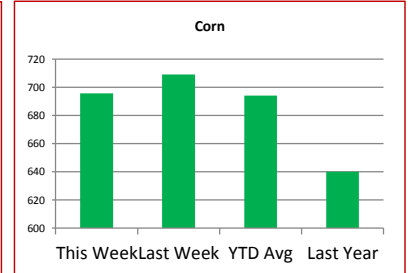
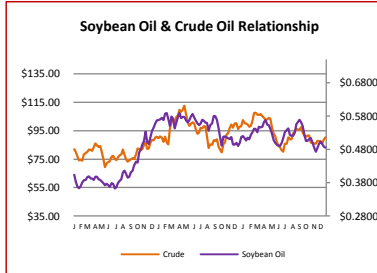
*Euro	↑ 1.3232	1.3213	1.2799	1.2969	0.14%	2.03%
*British Pound	↓ 1.6125	1.6237	1.5520	1.5522	-0.69%	3.88%
Canadian Dollar	↓ 0.9127	0.9140	0.9960	1.0210	-0.14%	-10.61%
Chinese Yuan	↑ 6.237	6.232	6.306	6.315	0.08%	-1.24%
Swiss Frank	↓ 0.913	0.914	0.938	0.940	-0.14%	-2.90%

Source: Federal Reserve Bank of New York

NYBOT Futures

Sugar 16	↑ 22.25	22.21	36.41	36.25	0.18%	-38.62%
Coffee	↑ 1.4685	1.4660	1.5125	2.2685	0.17%	-35.27%

Source: Intercontinental Exchange



Market Commentary

Commentary: The recent and ongoing "Fiscal cliff" negotiations have traders very nervous. The weakened U.S. dollar last week and sliding financial markets also indicate nervousness on the parts of traders. The sliding dollar also has aided crude oil increases. Agricultural commodities are showing no real direction. Lack of any solid news has kept them from making any big moves. The shorter weeks during the holidays and the lighter trading that usually takes place, can cause moves in the market that is not justified. This has not happened this year. The volume has been very small. Compared to last year futures are a bit lower and are trending still in that direction. It looks like the year will end in the red. Selling was the theme for traders last week for agricultural commodities.

Corn futures closed between \$6.91-1/2 and \$7.04-1/4 per bushel, ending the week at \$6.94.

Soybean futures closed between \$14.18-3/4 and \$14.39-3/4 per bushel, ending the week at \$14.24.

Soybean meal futures closed between \$427.70 and \$434.50 per short ton, ending the week at \$427.70.

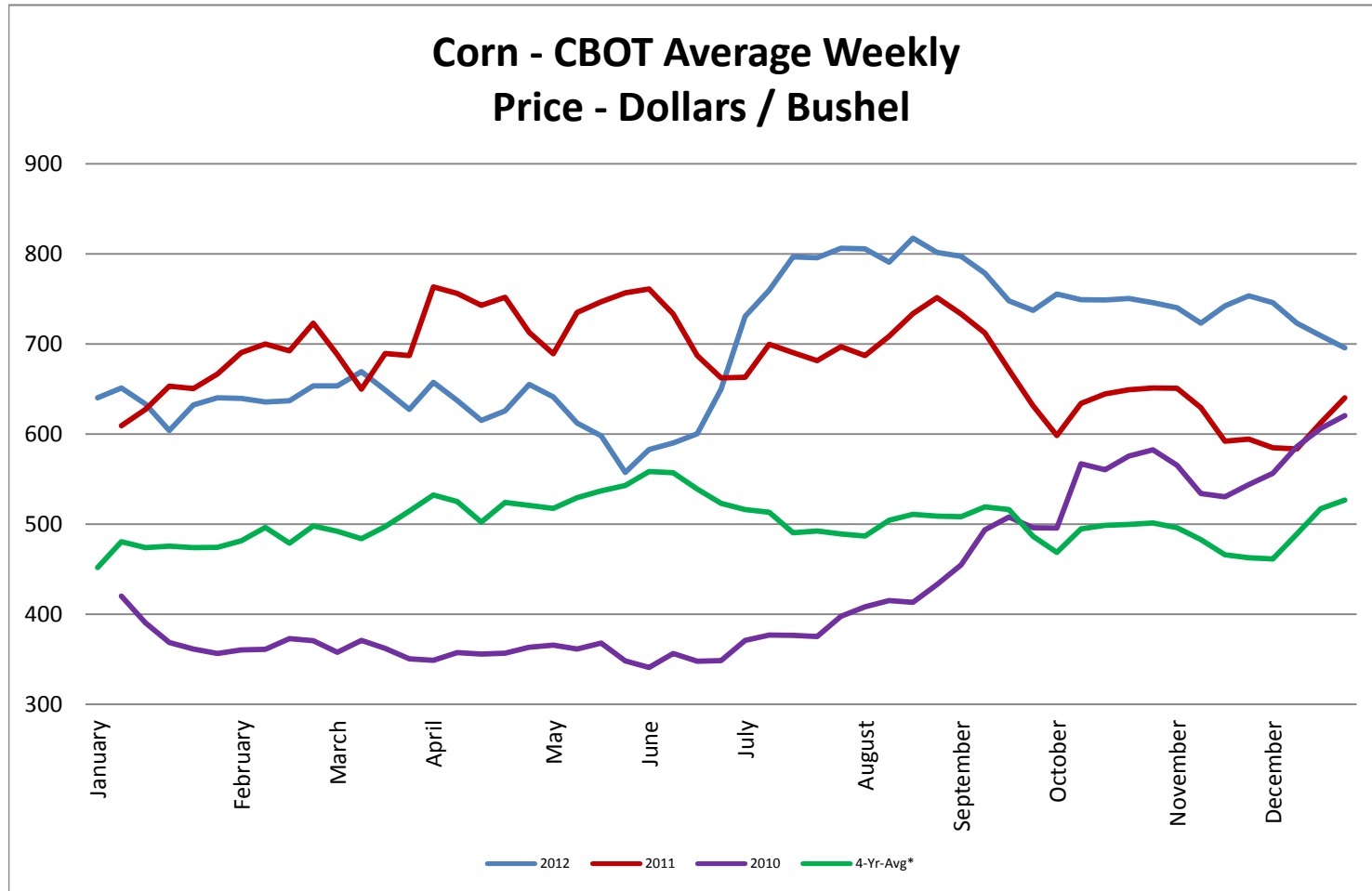
Soybean oil futures closed between \$0.4829 and \$0.4894 per pound, ending the week at \$0.4894.

Wheat futures closed between \$7.72-1/4 and \$7.93-3/4 per bushel, ending the week at \$7.78-3/4.

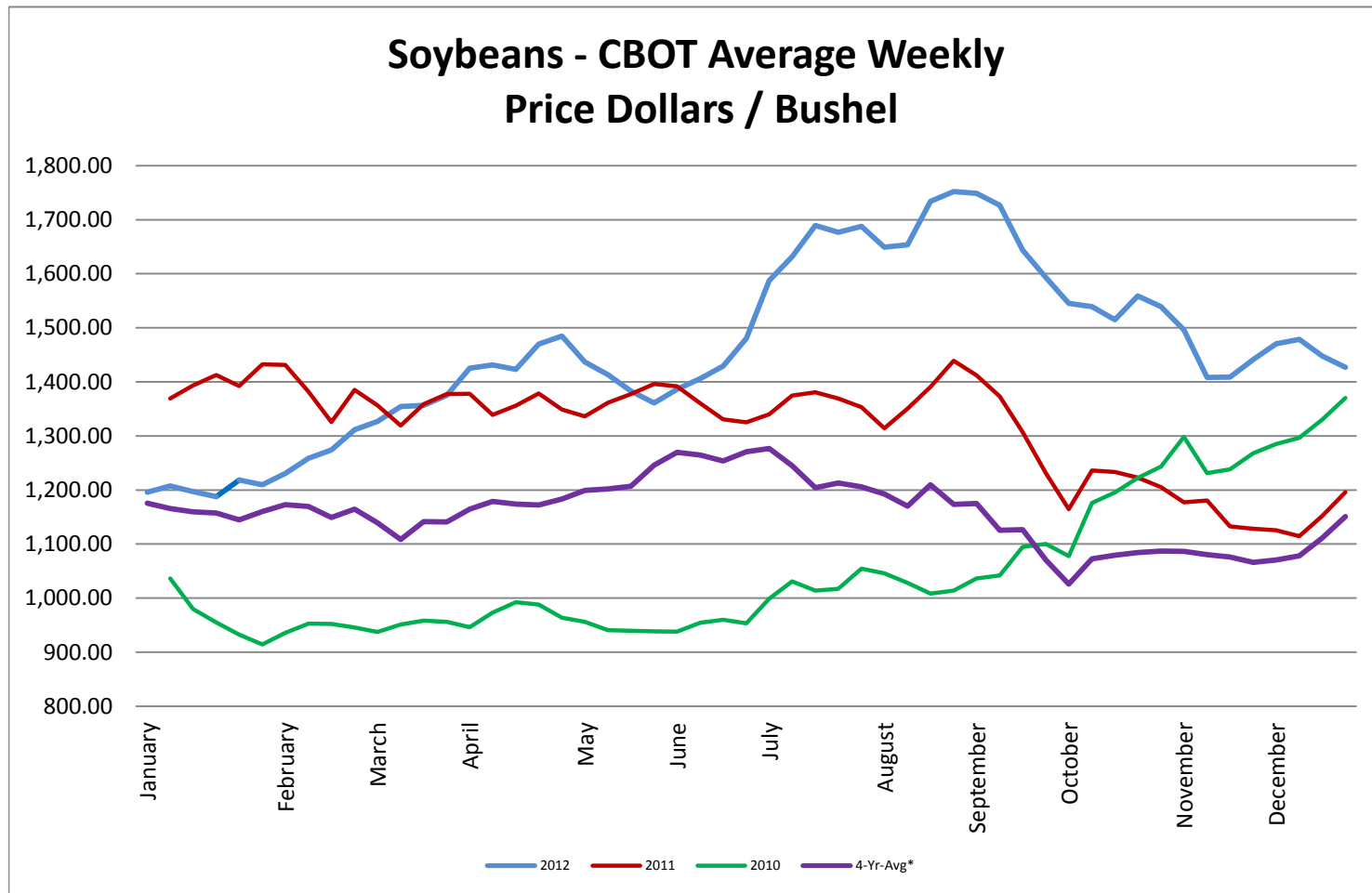
* Used as the indexing unit of measure for this exchange rate

Commodity Information: Commodity information found in this sheet is publically available. It can be found from numerous sources, all of which are noted. This report is for informational purposes only. Please do not make hedging or buying decisions based on this report. Please note that rounding can affect the percent of change values.* Paul's Currency Index compares the U.S. Dollar to five other currencies, Euro, British Pound, Swiss Frank, Canadian Dollar, and Chinese Yuan.

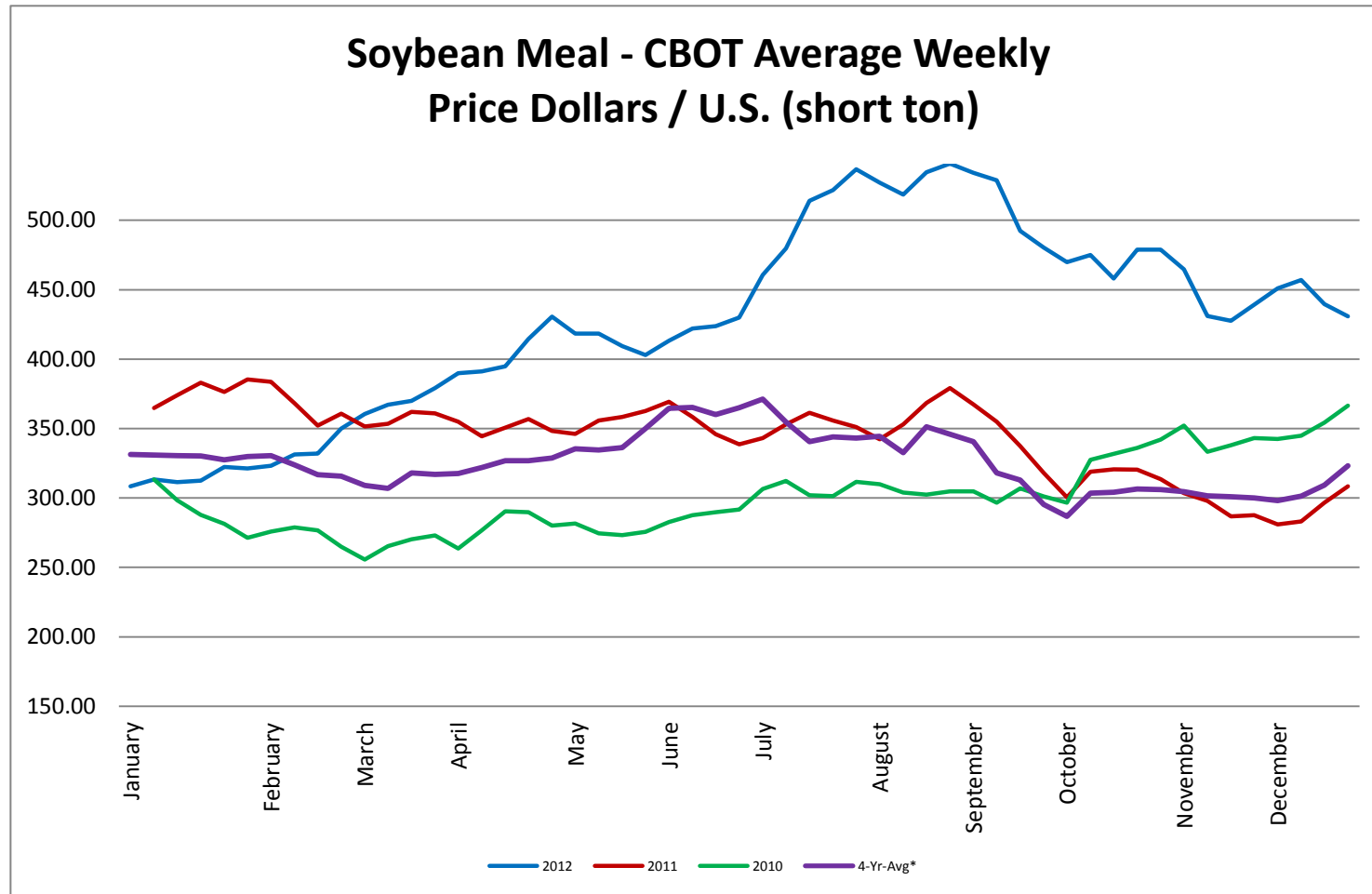
Corn - CBOT Weekly Futures Price



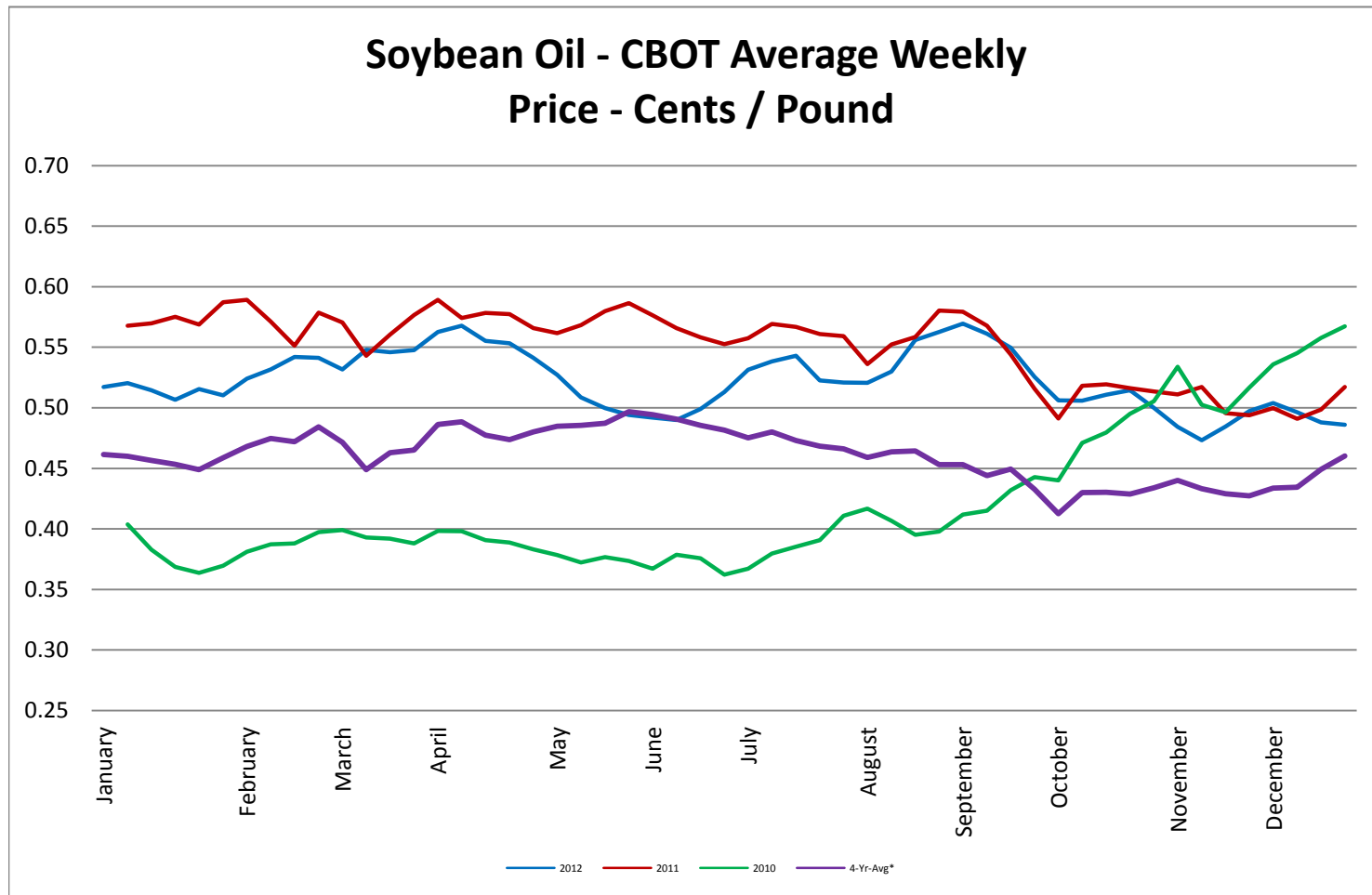
Soybeans - CBOT Weekly Average Price - Dollars / Bushel



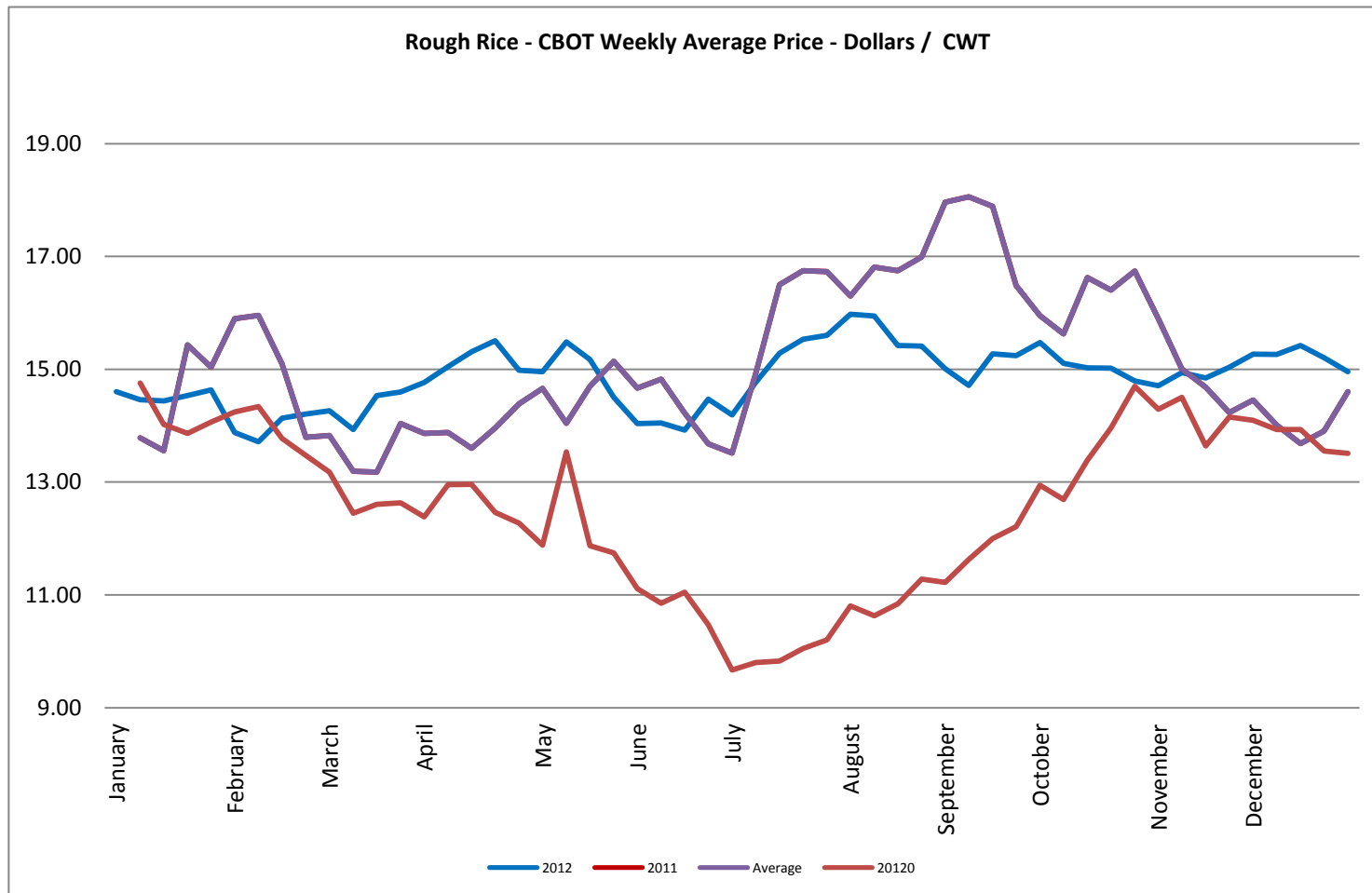
Soybean Meal - CBOT Weekly Average Price - Dollars / US Ton



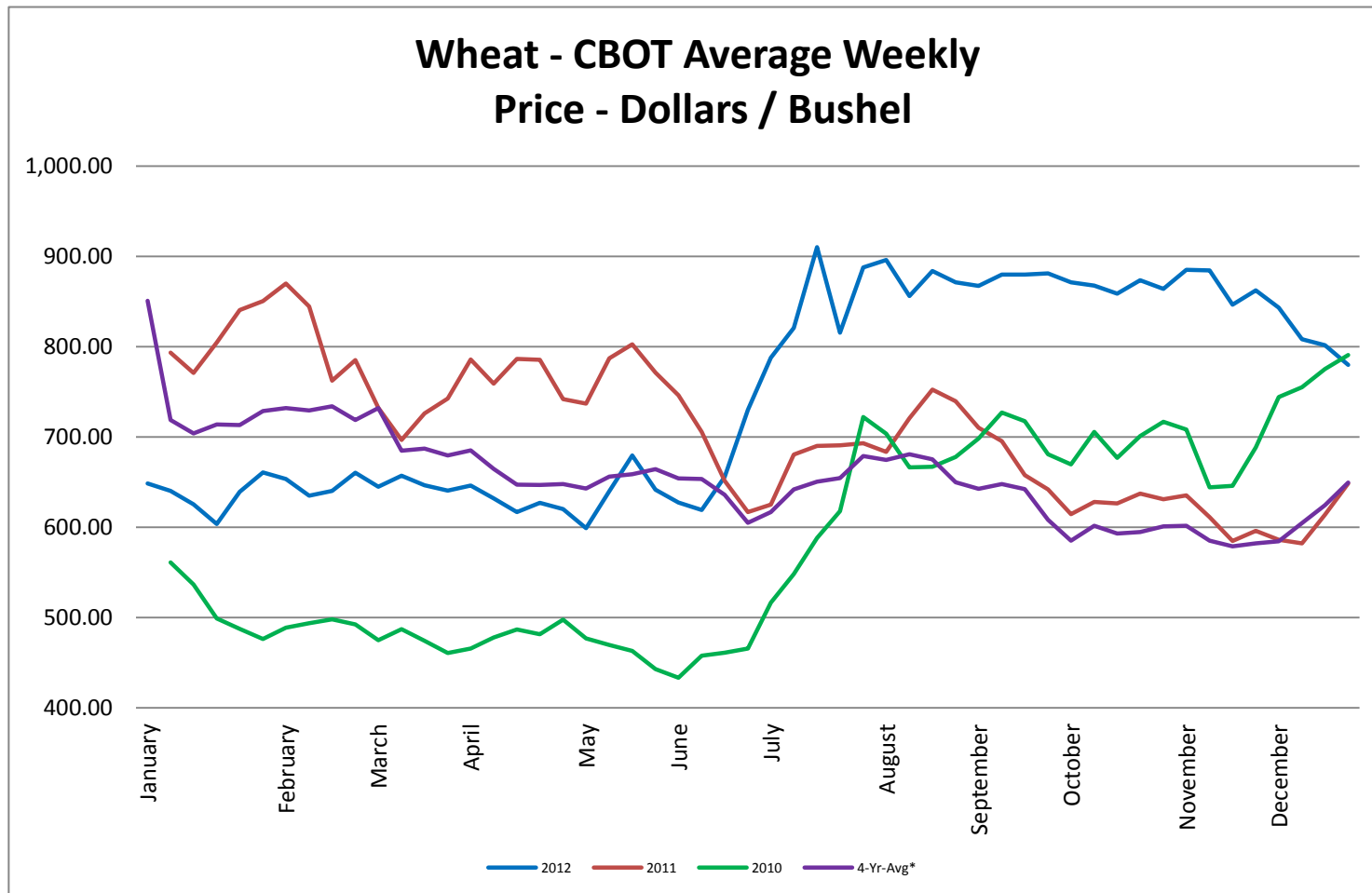
Soybean Oil - CBOT Weekly Average Price - Cents / Pound



Rough Rice - CBOT Weekly Average Price - Dollars / CWT

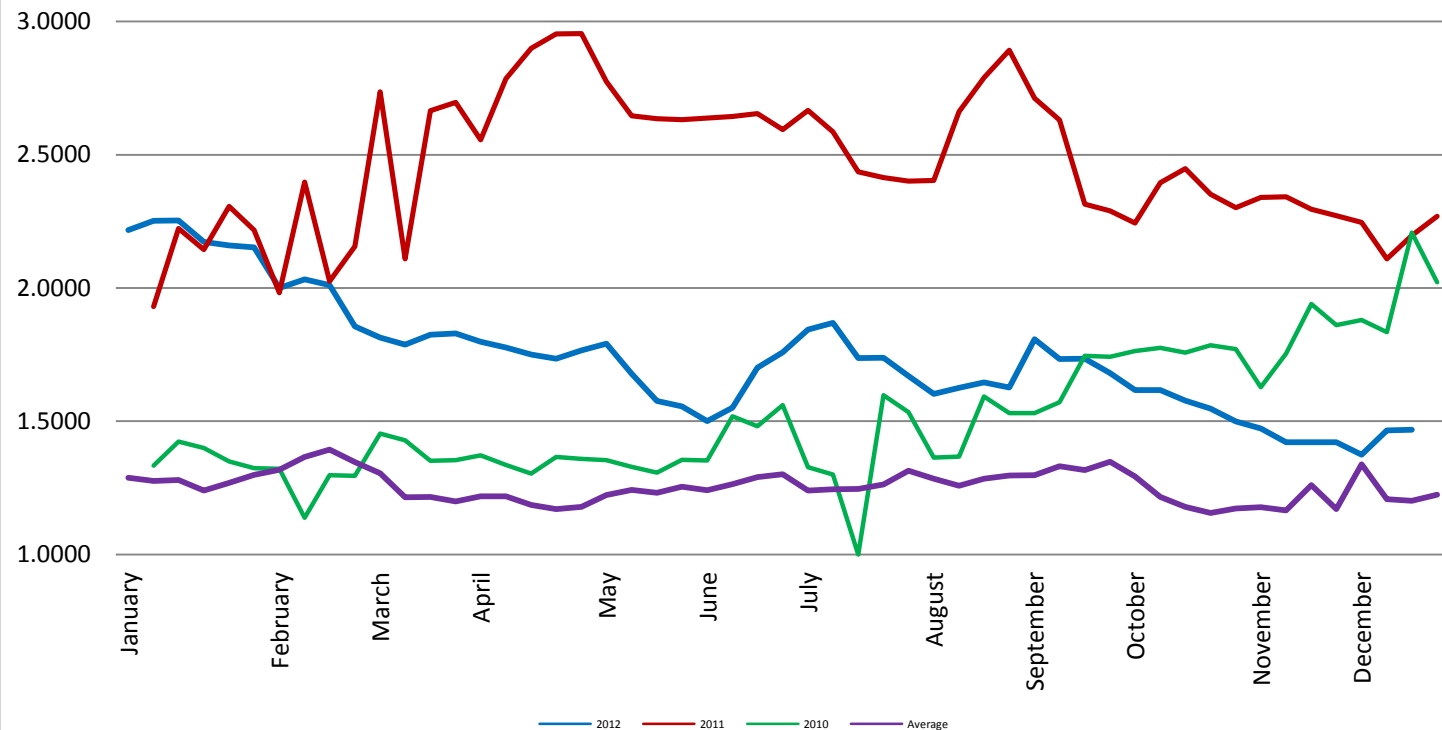


Wheat - CBOT Weekly Average Price - Dollars / Bushel



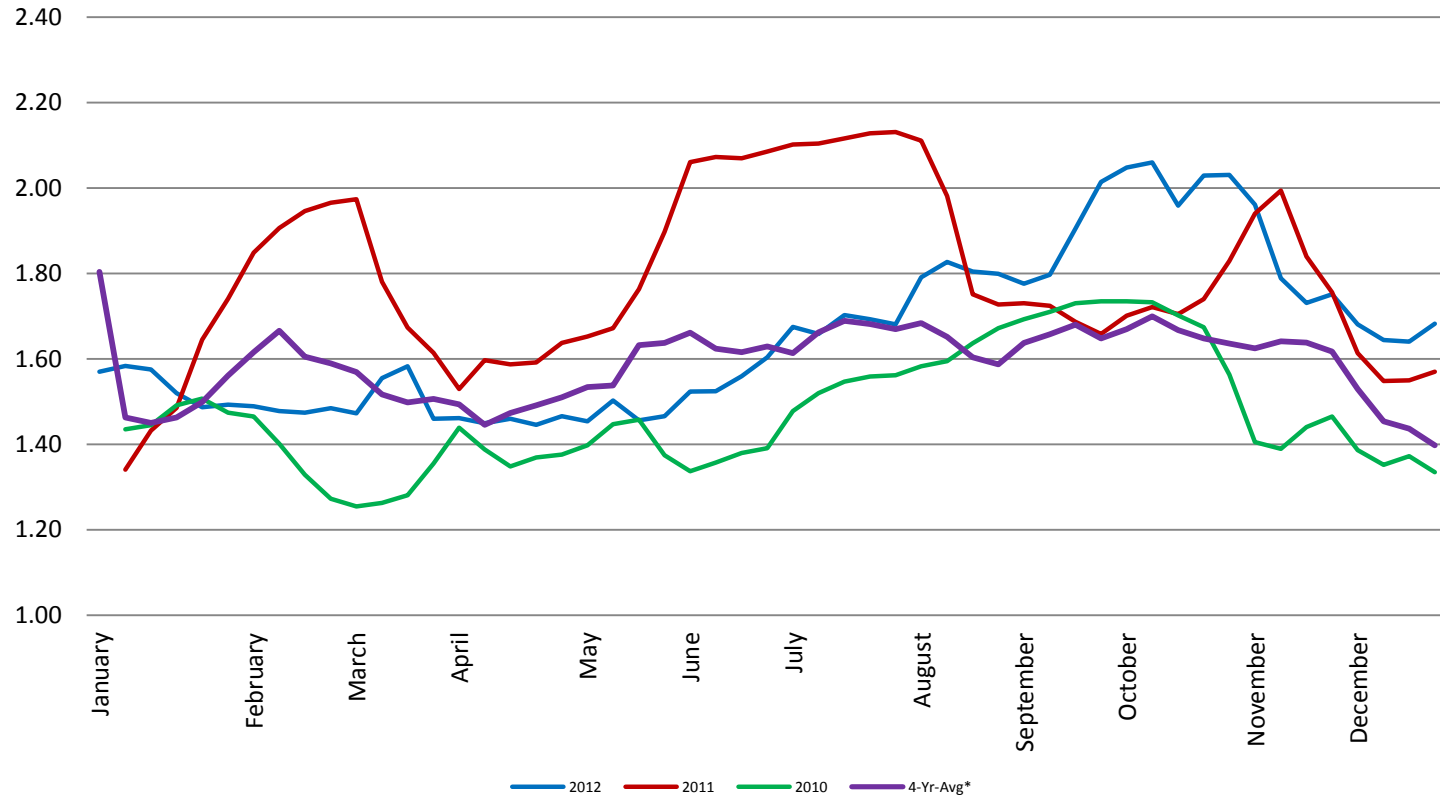
Coffee - (KC) NYBOT Average Weekly Price - Dollars per Pound

Coffee - (KC) NYBOT Average Weekly Price
Dollars / Pound



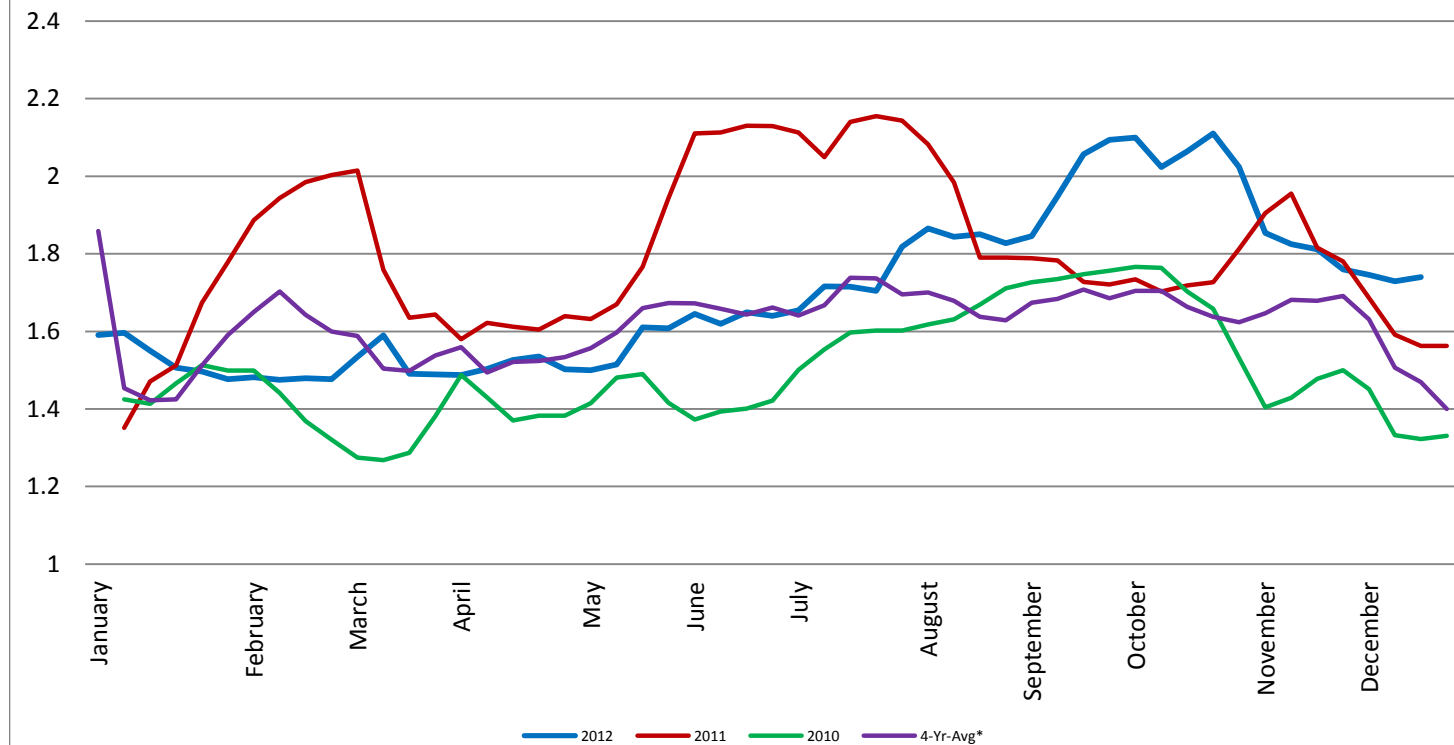
Barrel Cheddar - CME Average Weekly Price / Pound

Barrel Cheddar - CME Average Weekly Dollars per Pound

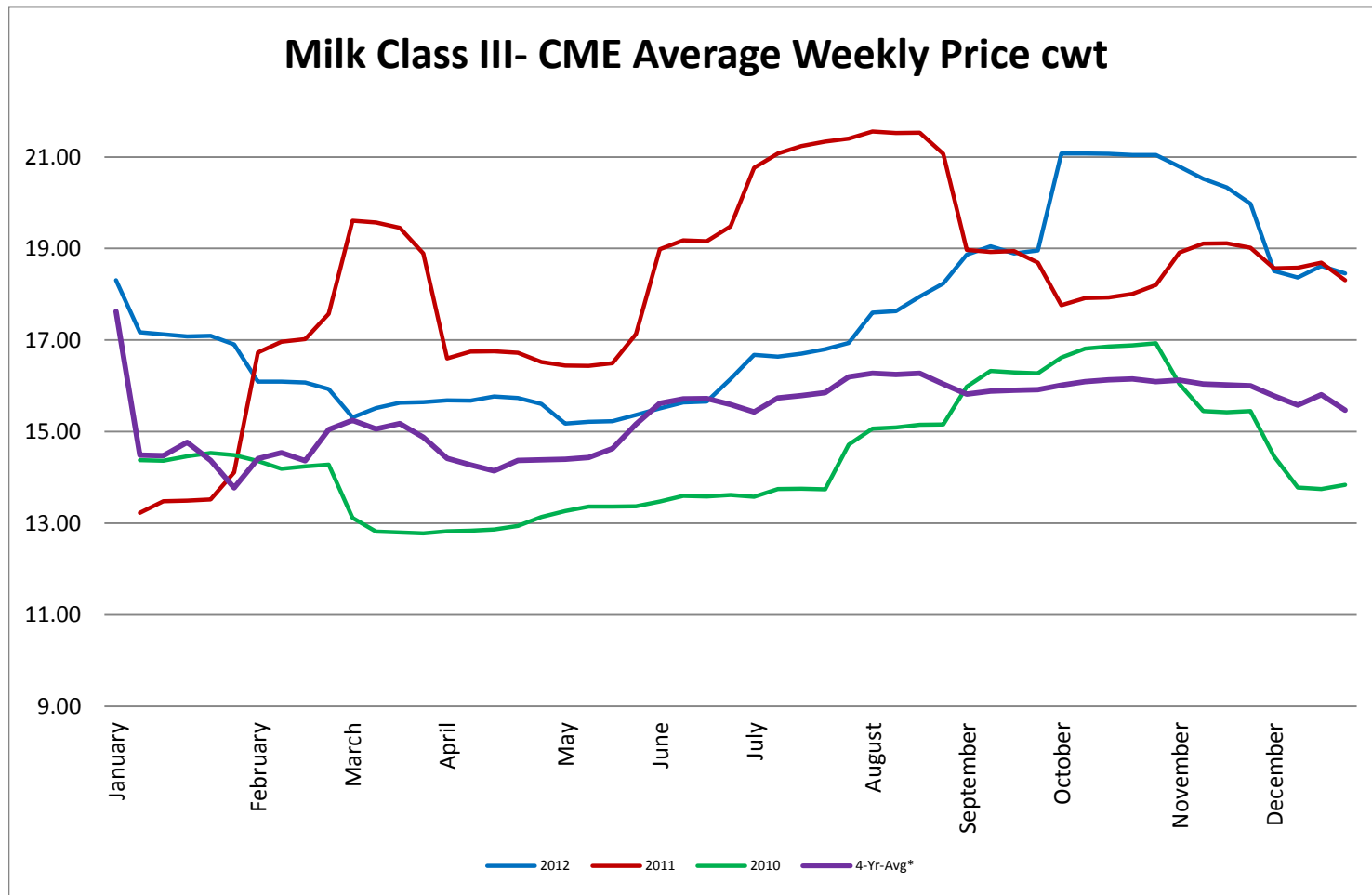


40 LB Block Cheddar - CME Average Weekly Price / Pound

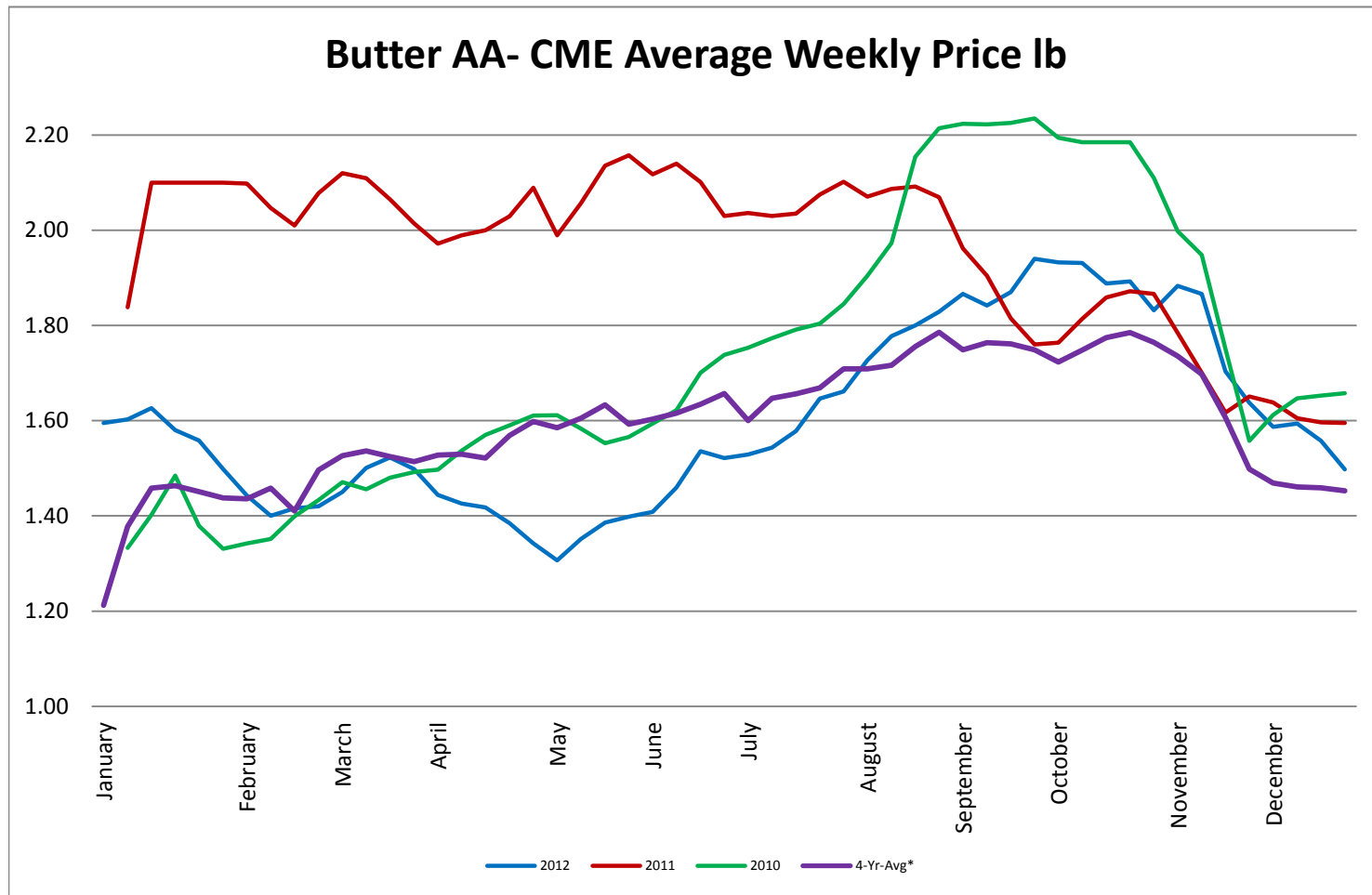
Block Cheddar 40 #- CME Average Weekly Dollars per Pound



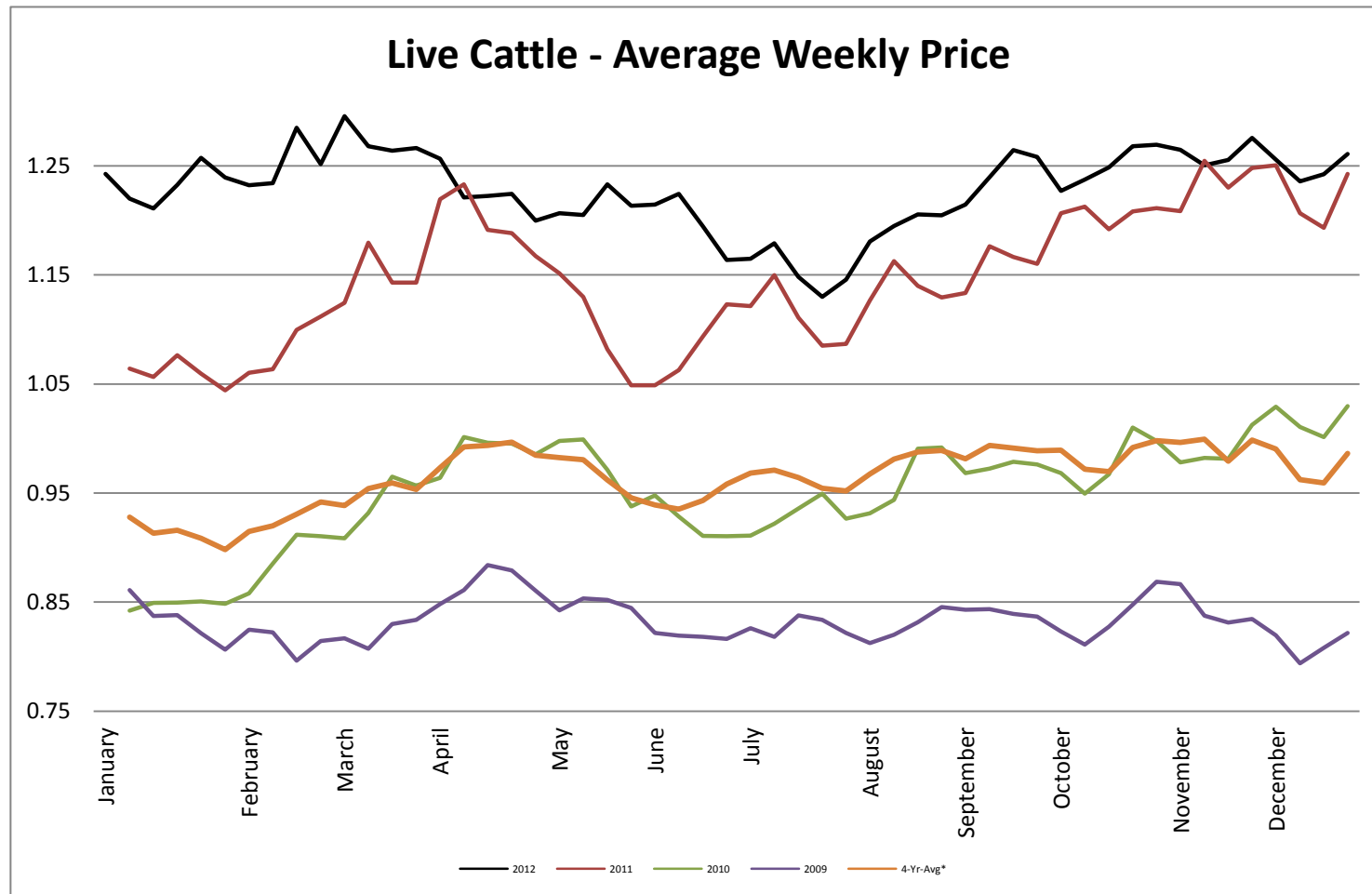
Milk Class III - CME Average Weekly Price CWT



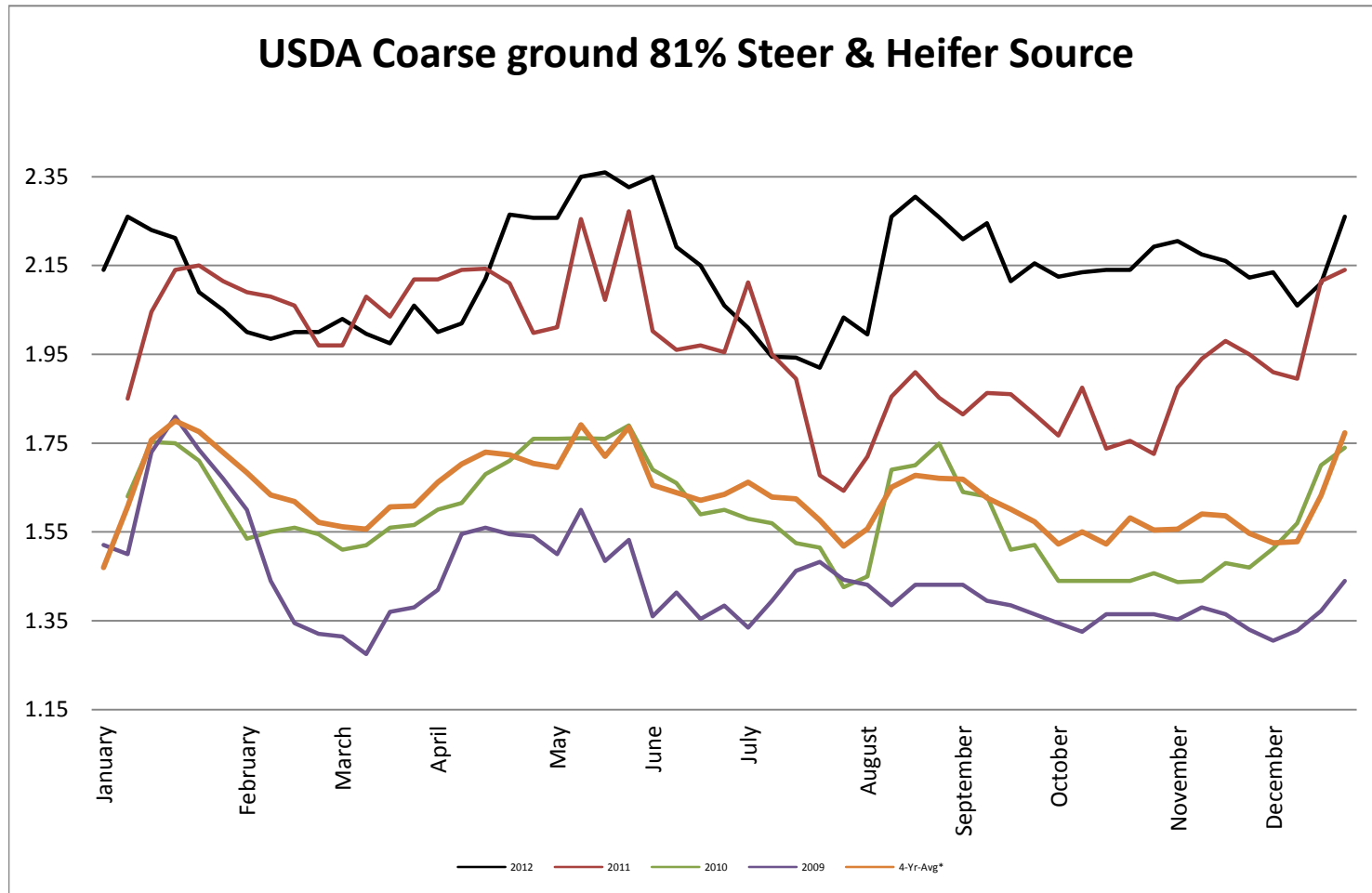
Butter AA - CME Average Weekly Price lb



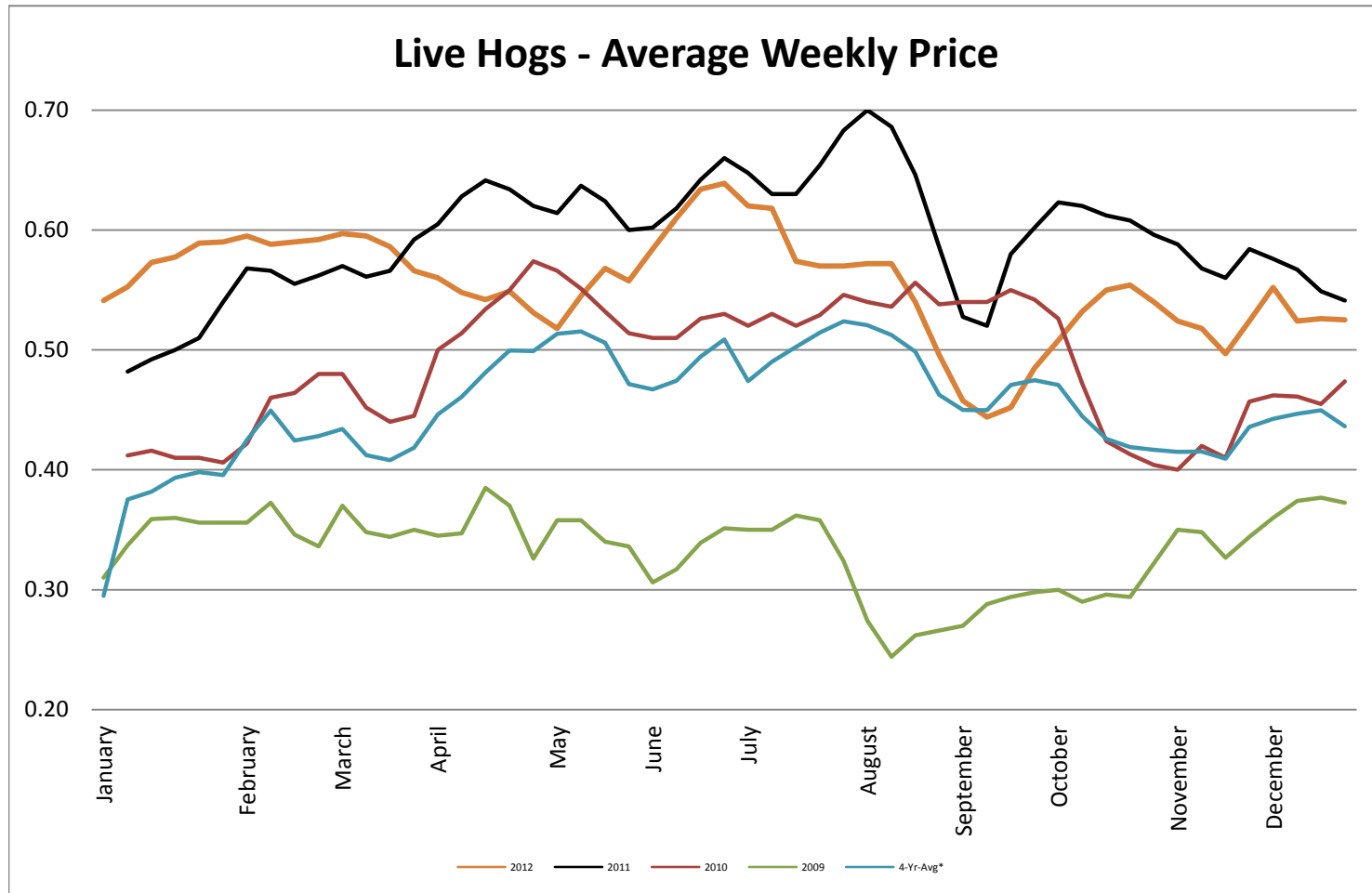
Live Cattle - Average Weekly Price USDA - 6 State Average



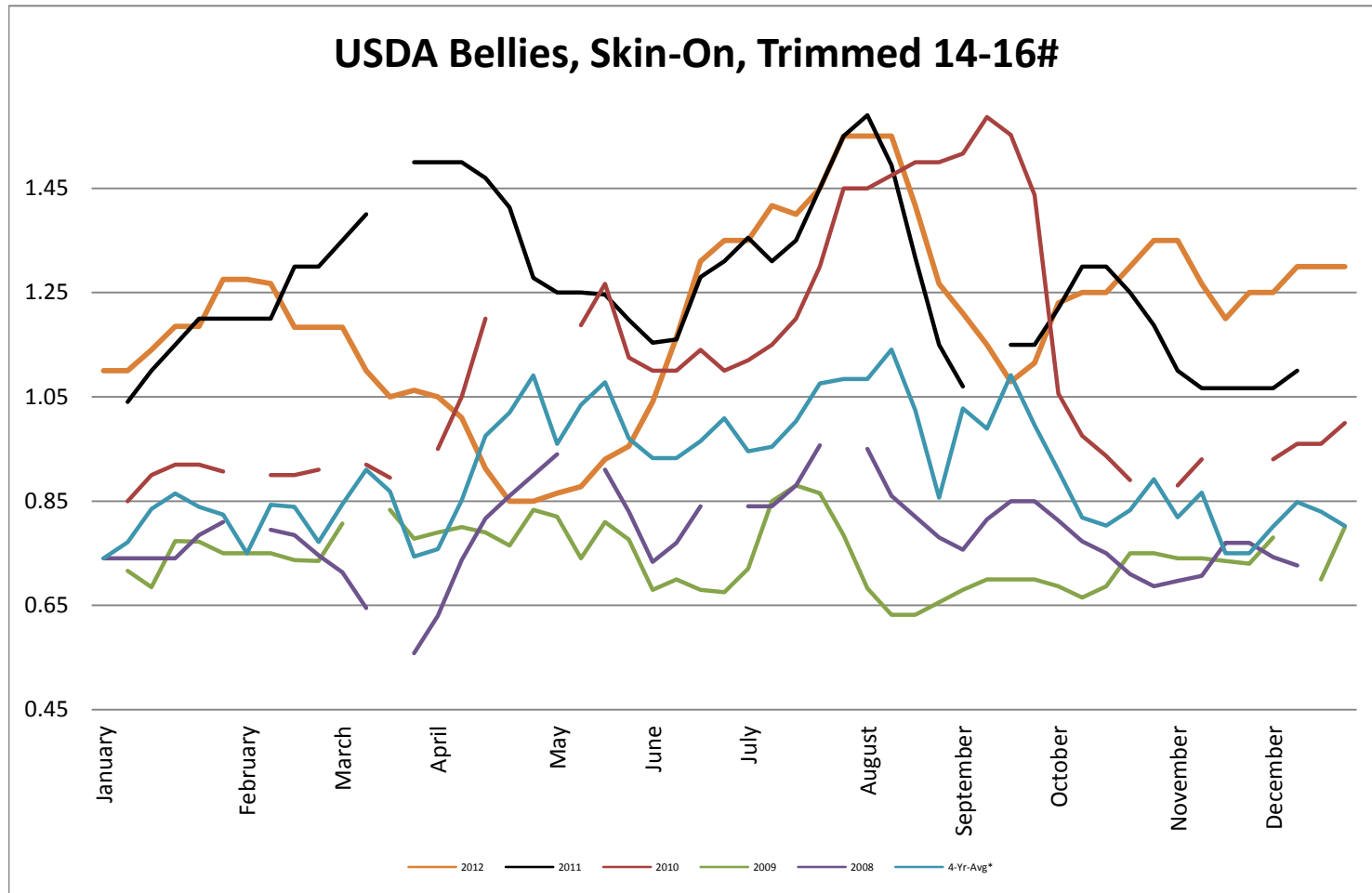
USDA Coarse ground 81% Steer & Heifer Source



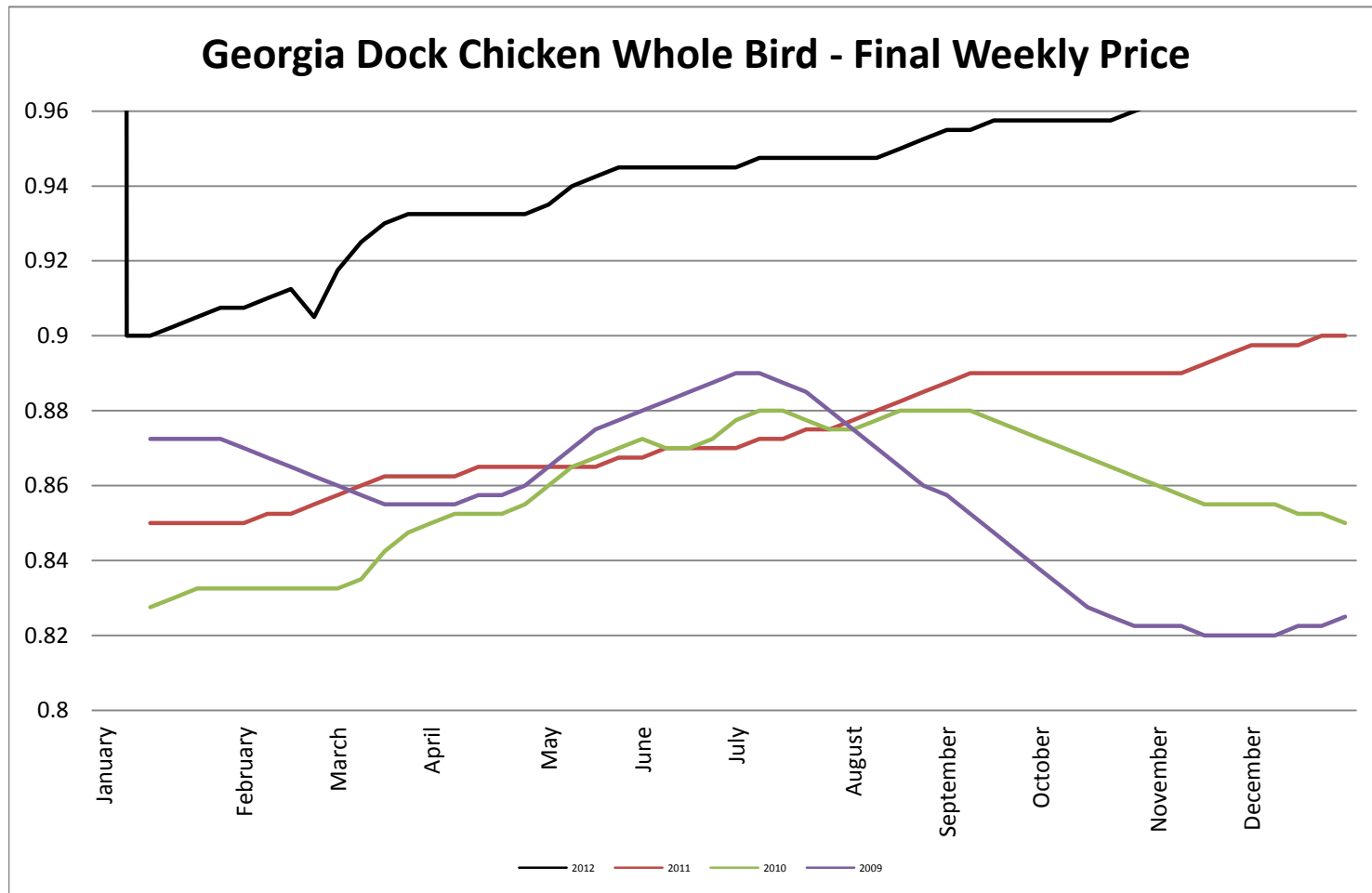
USDA Live Hogs - Average Weekly Price



USDA Bellies, Skin-On, Trimmed 14-16#

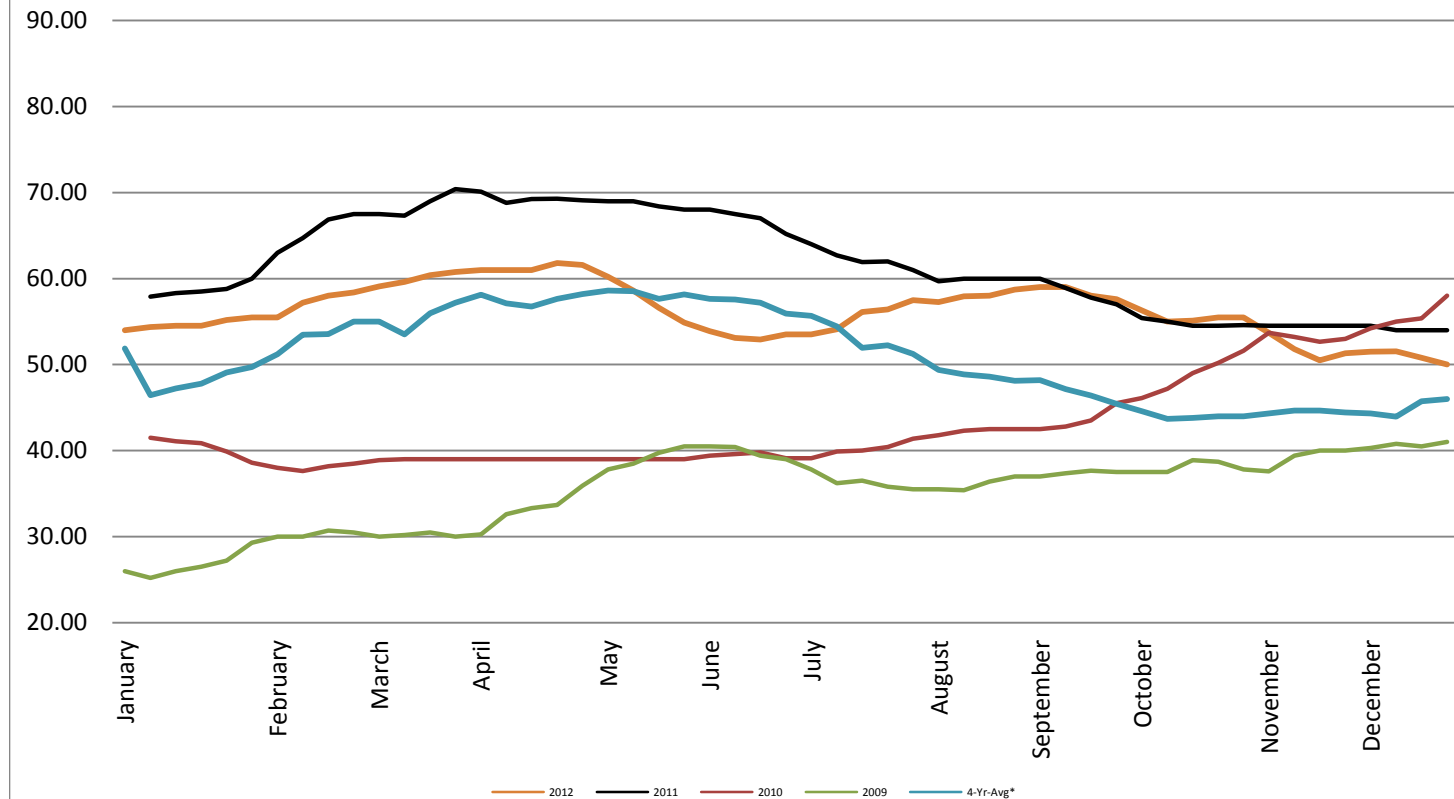


Georgia Dock Chicken - Final Weekly Price

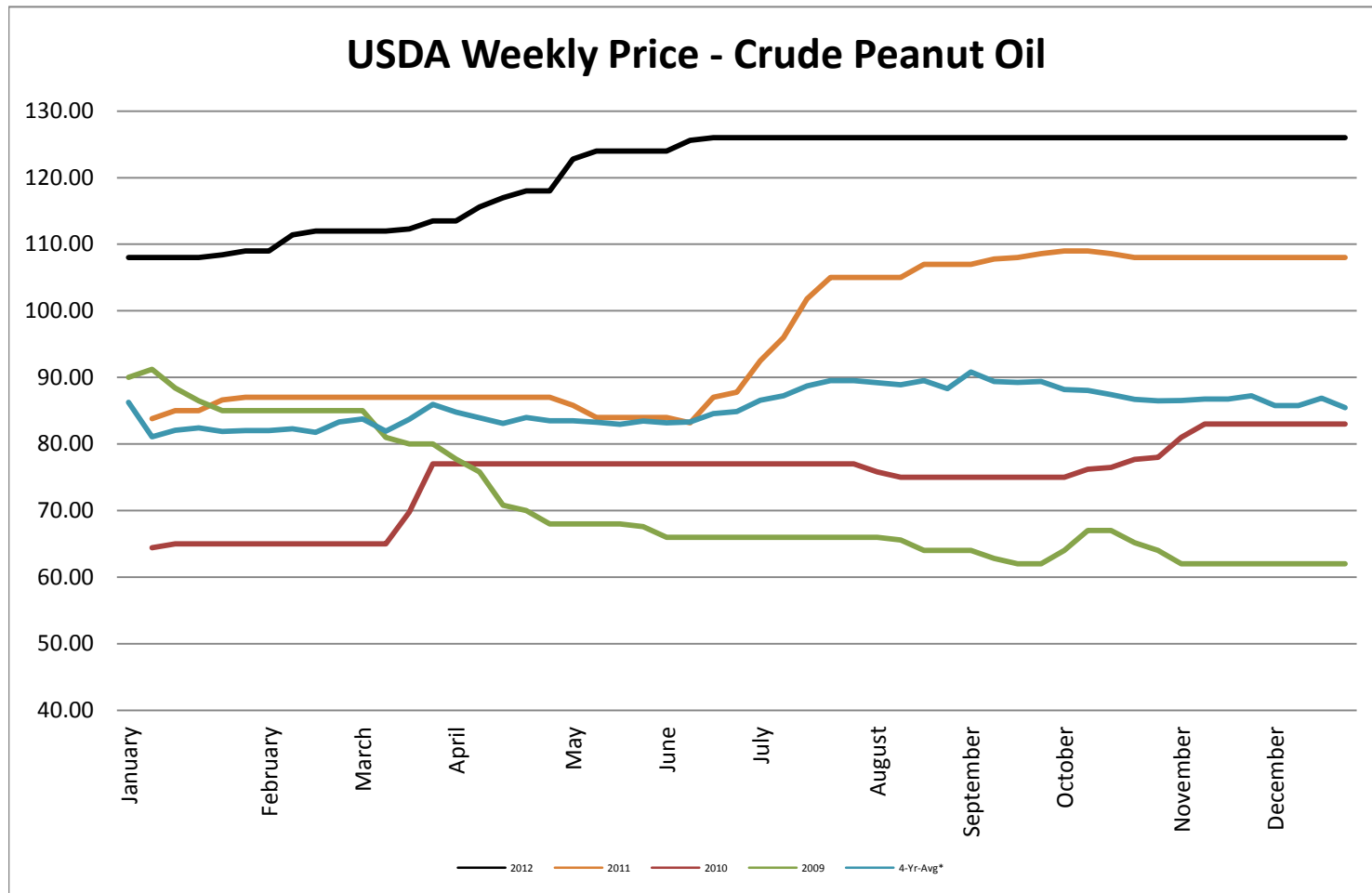


USDA Weekly Price - Crude Corn Oil

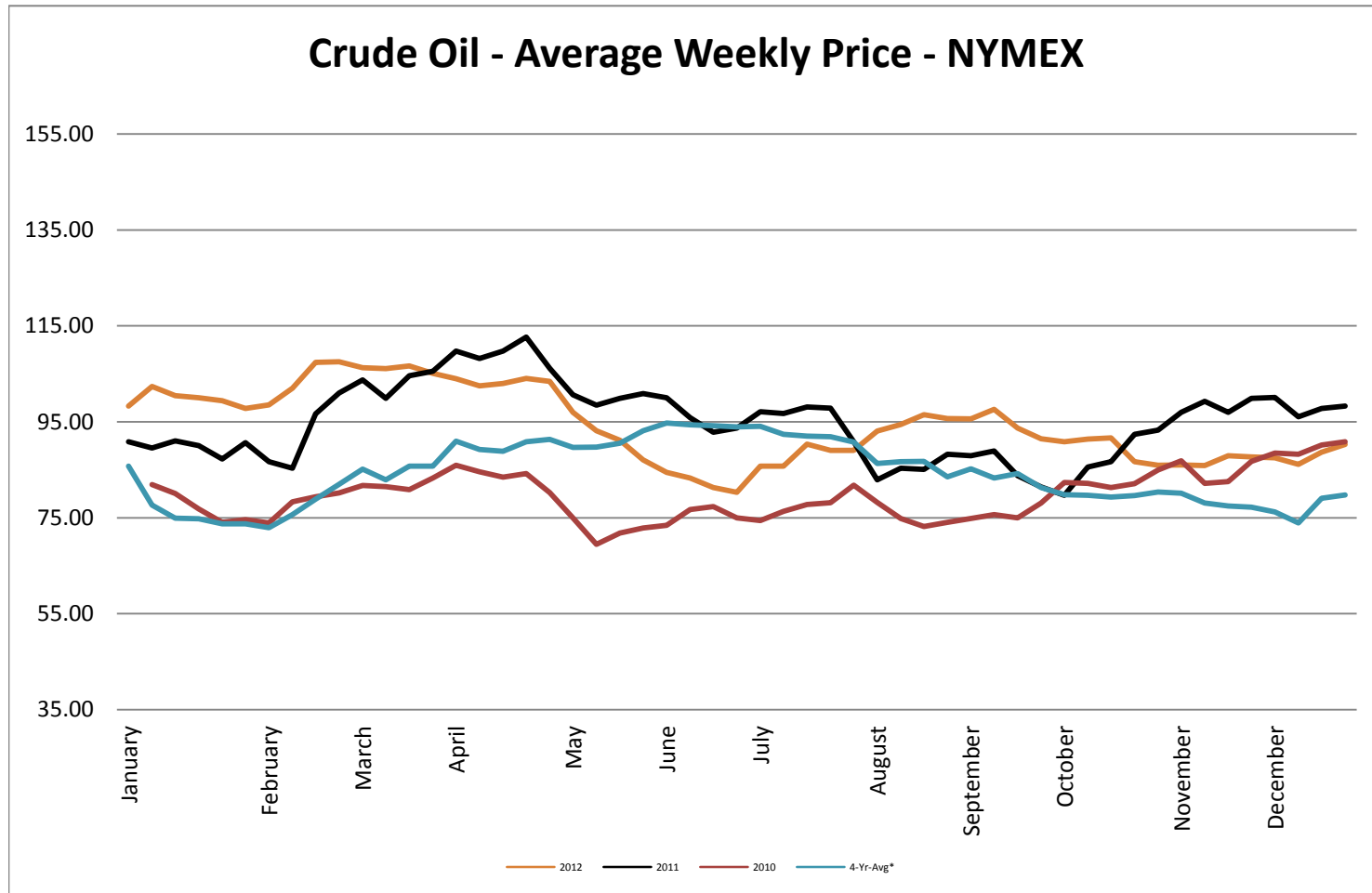
USDA Illinois Weekly Price - Crude Corn Oil

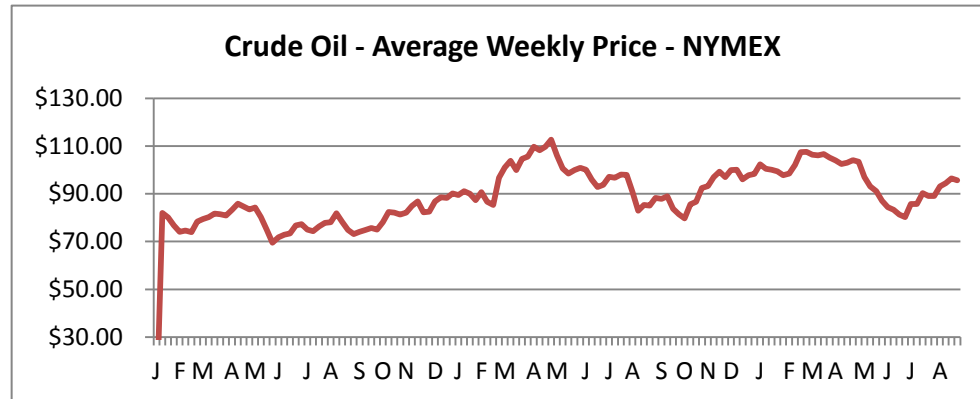


USDA Weekly Price - Crude Peanut Oil

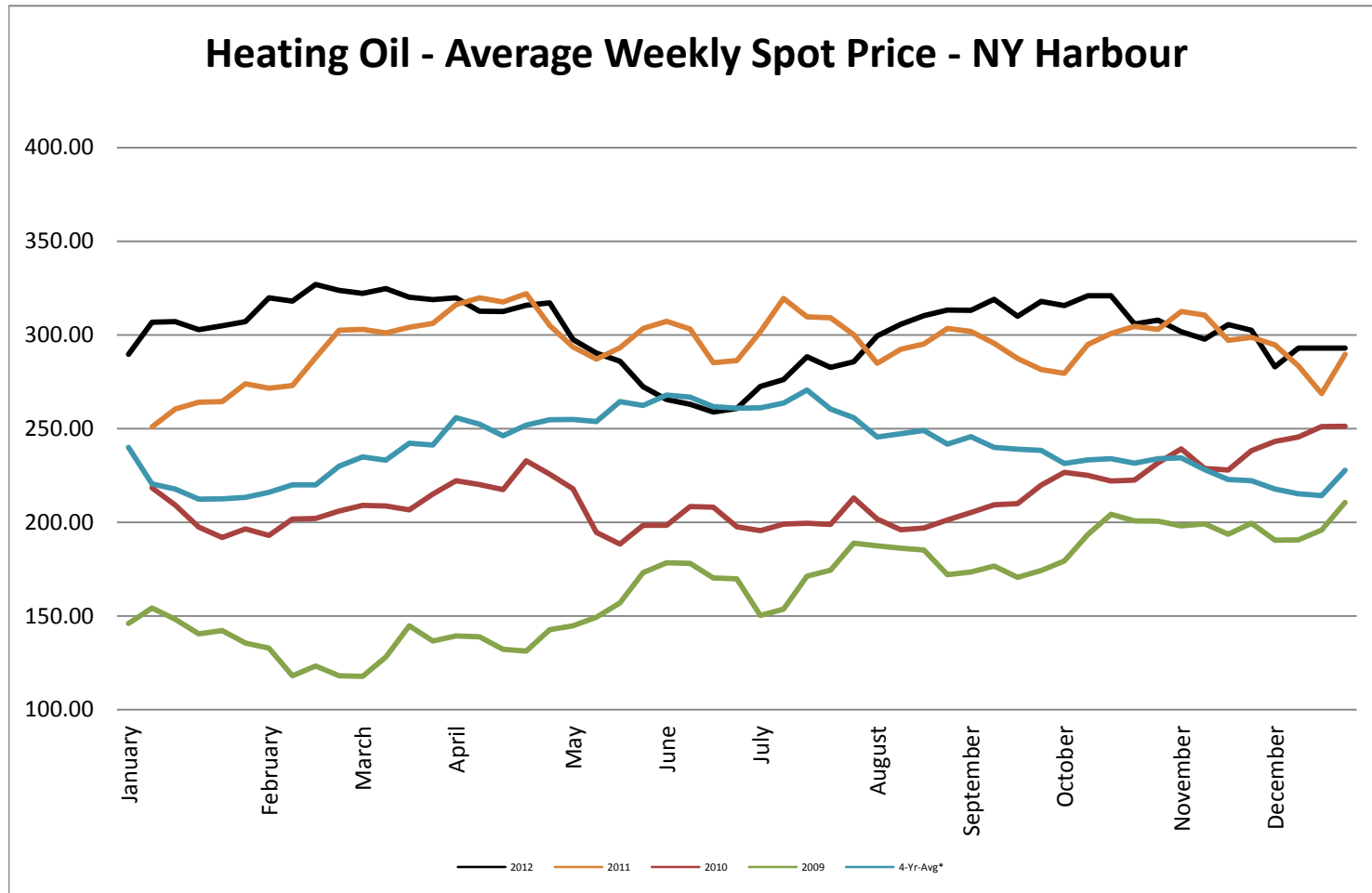


Crude Oil - Average Weekly Price - NYMEX

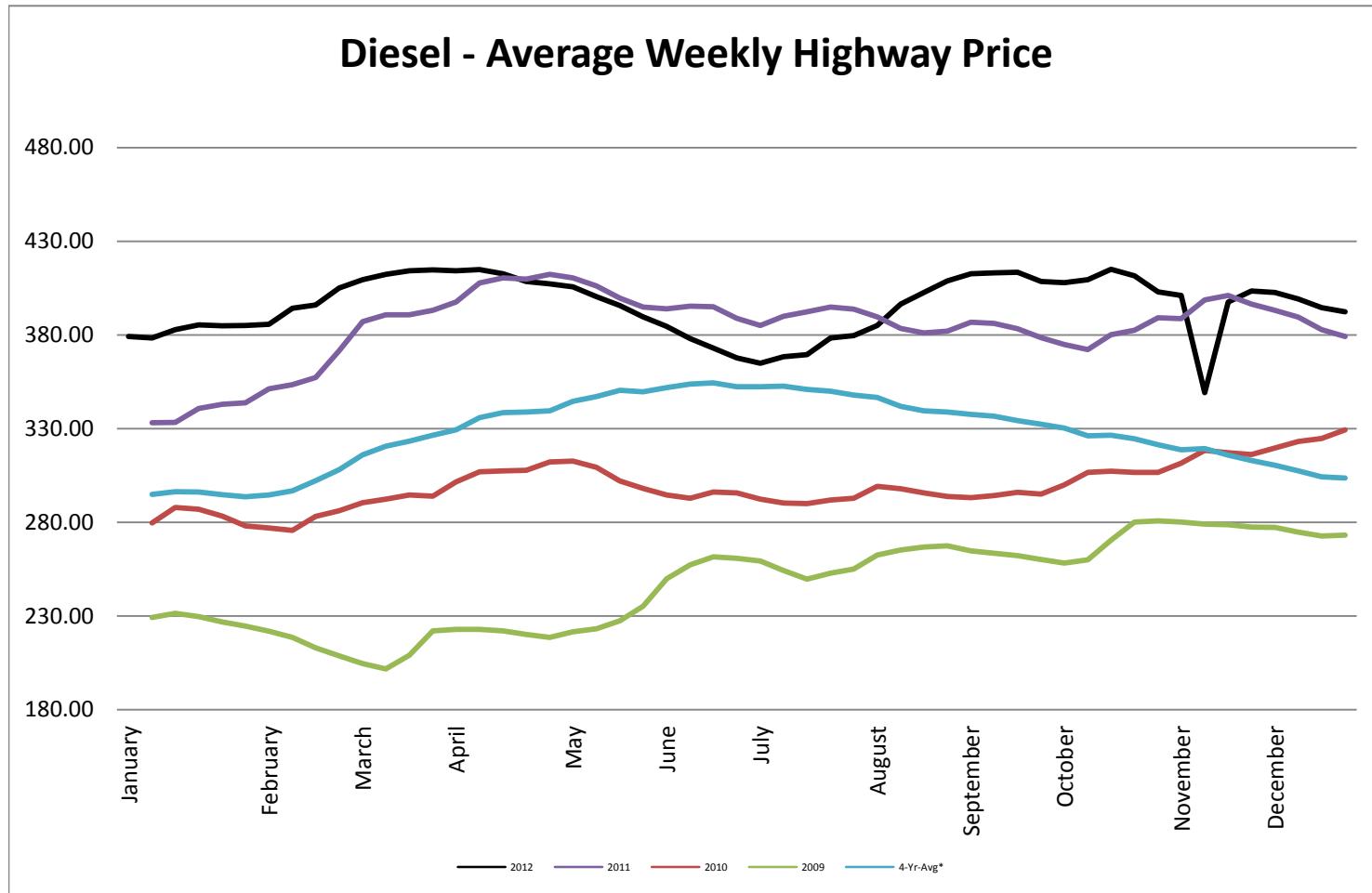




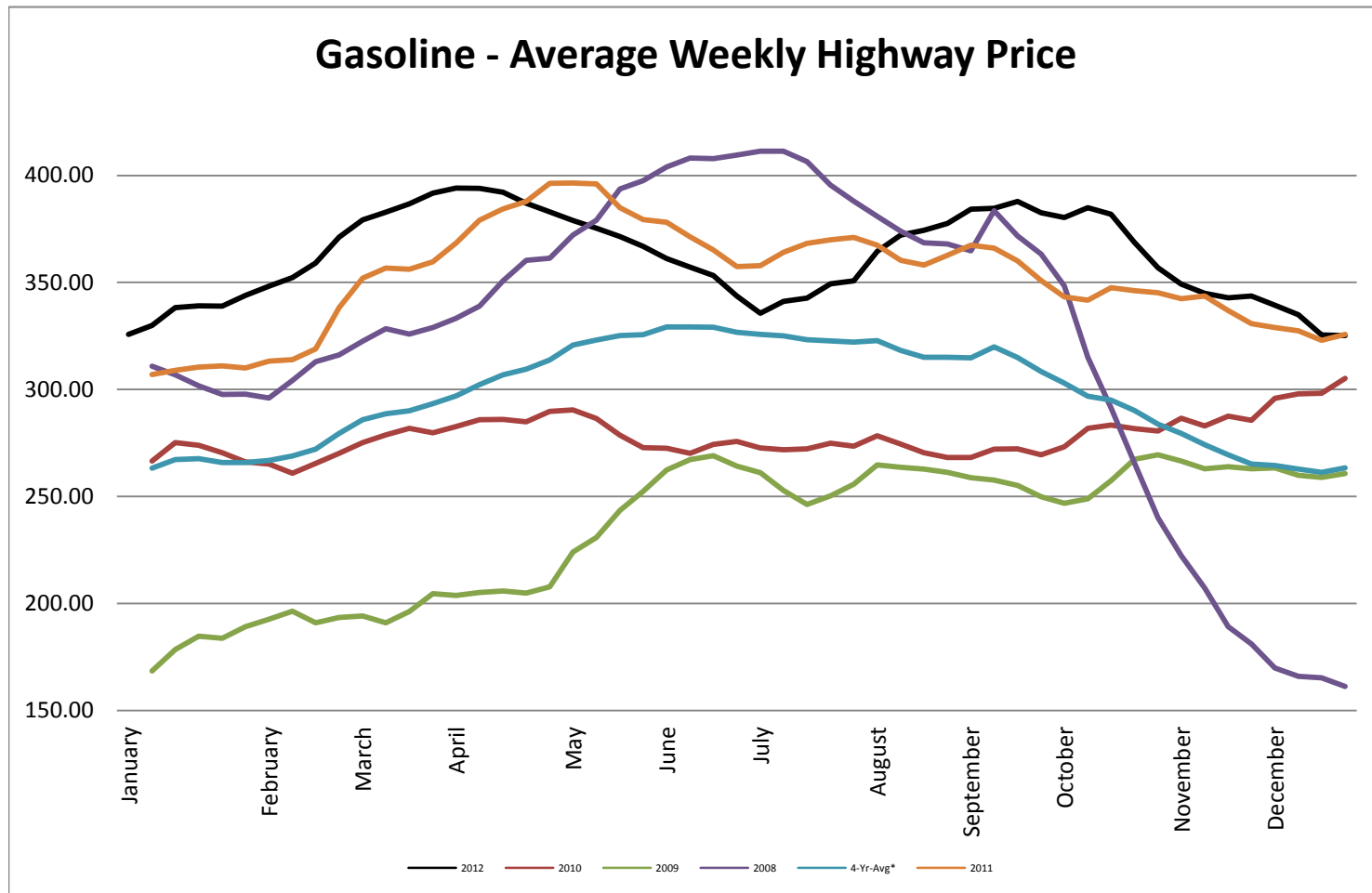
Heating Oil - Average Weekly Spot Price - NY Harbour



Diesel - Average Weekly Highway Price

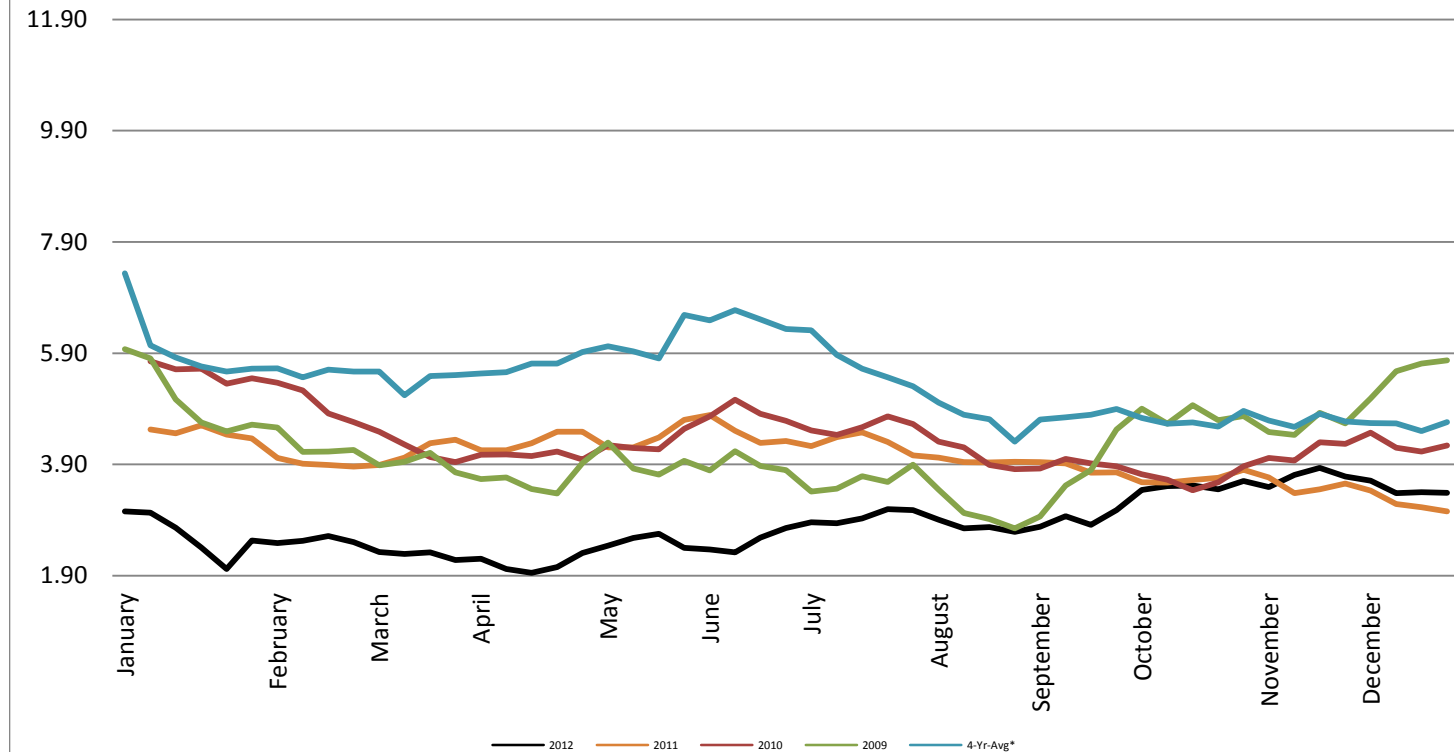


Gasoline Unleaded - Average Weekly Highway Price

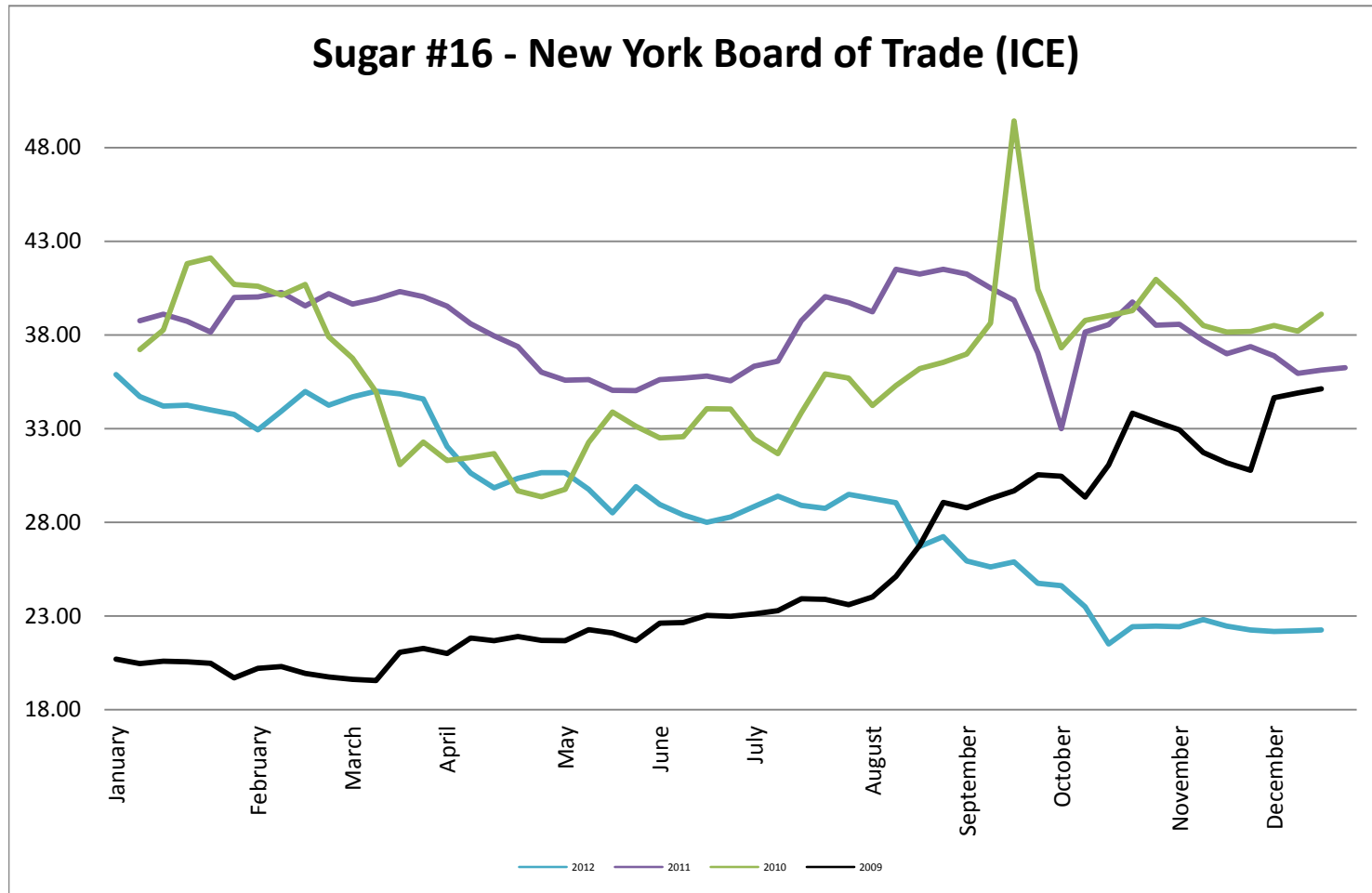


Natural Gas Futures - New York Mercantile Exchange

Natural Gas Futures - New York Mercantile Exchange



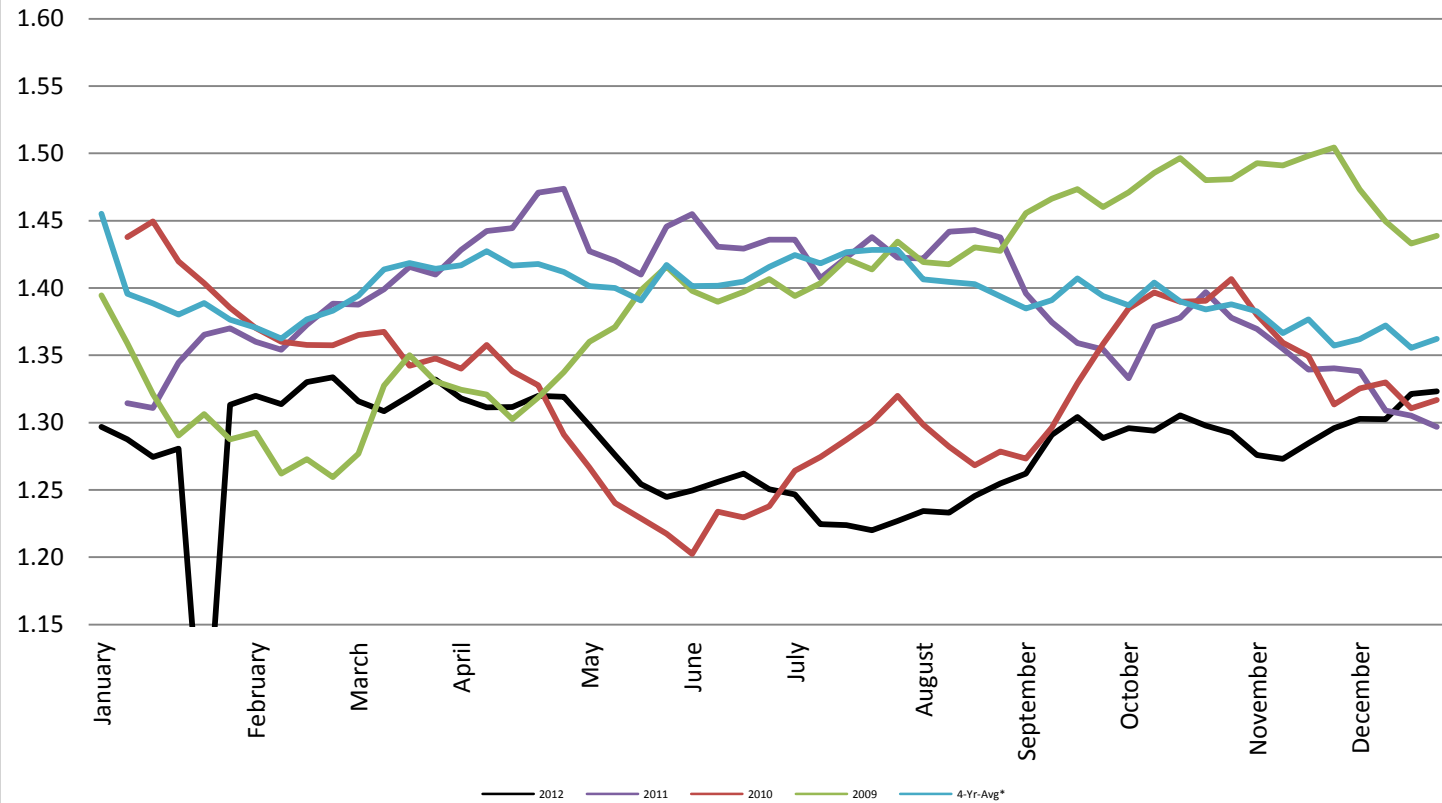
Sugar #16 - New York Board of Trade (ICE)



Foreign Exchange Rate - Euro, EMU Members

Foreign Exchange Rate - Euro, EMU Members

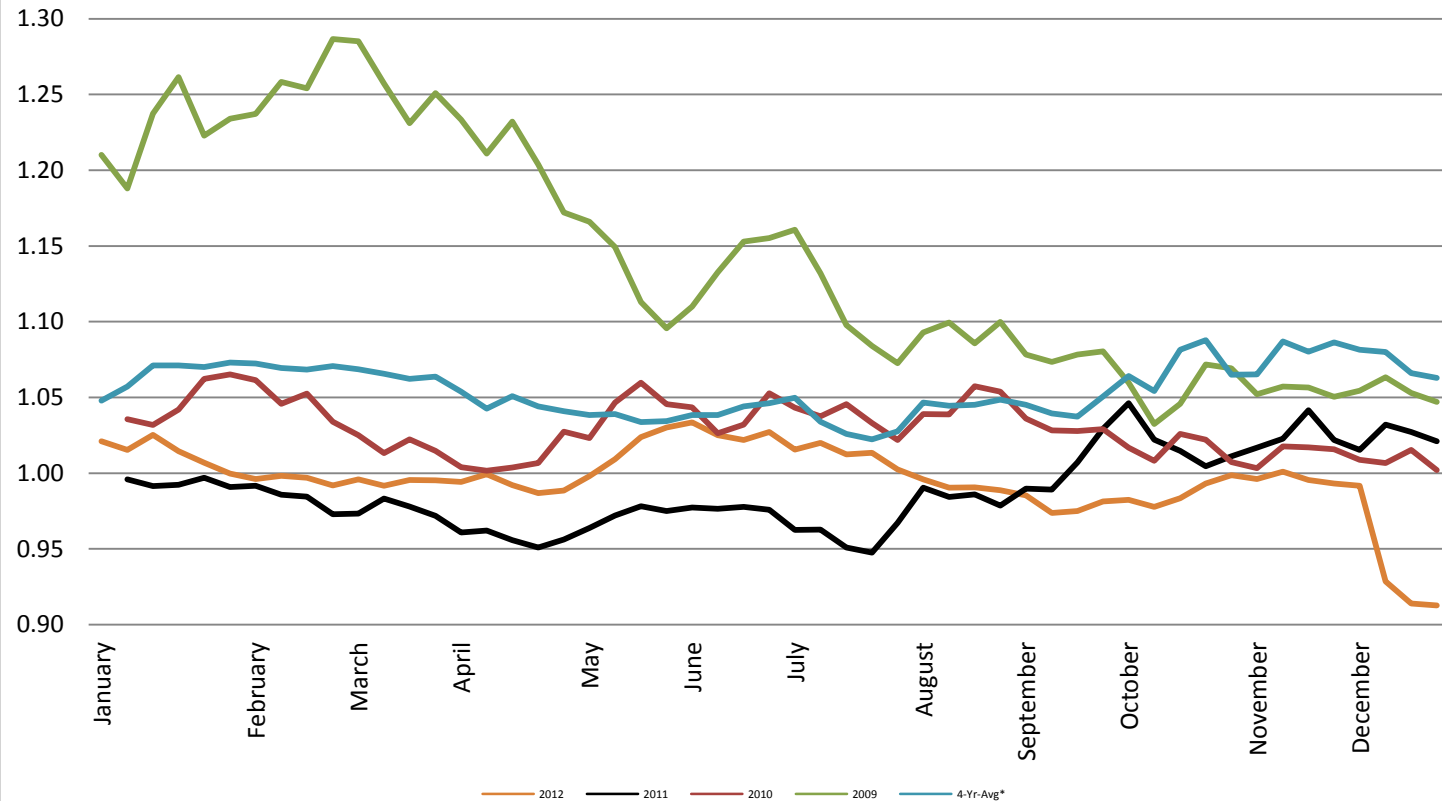
Federal Reserve Bank of New York



Foreign Exchange Rate - Canadian Dollar

Foreign Exchange Rate - Canadian Dollar

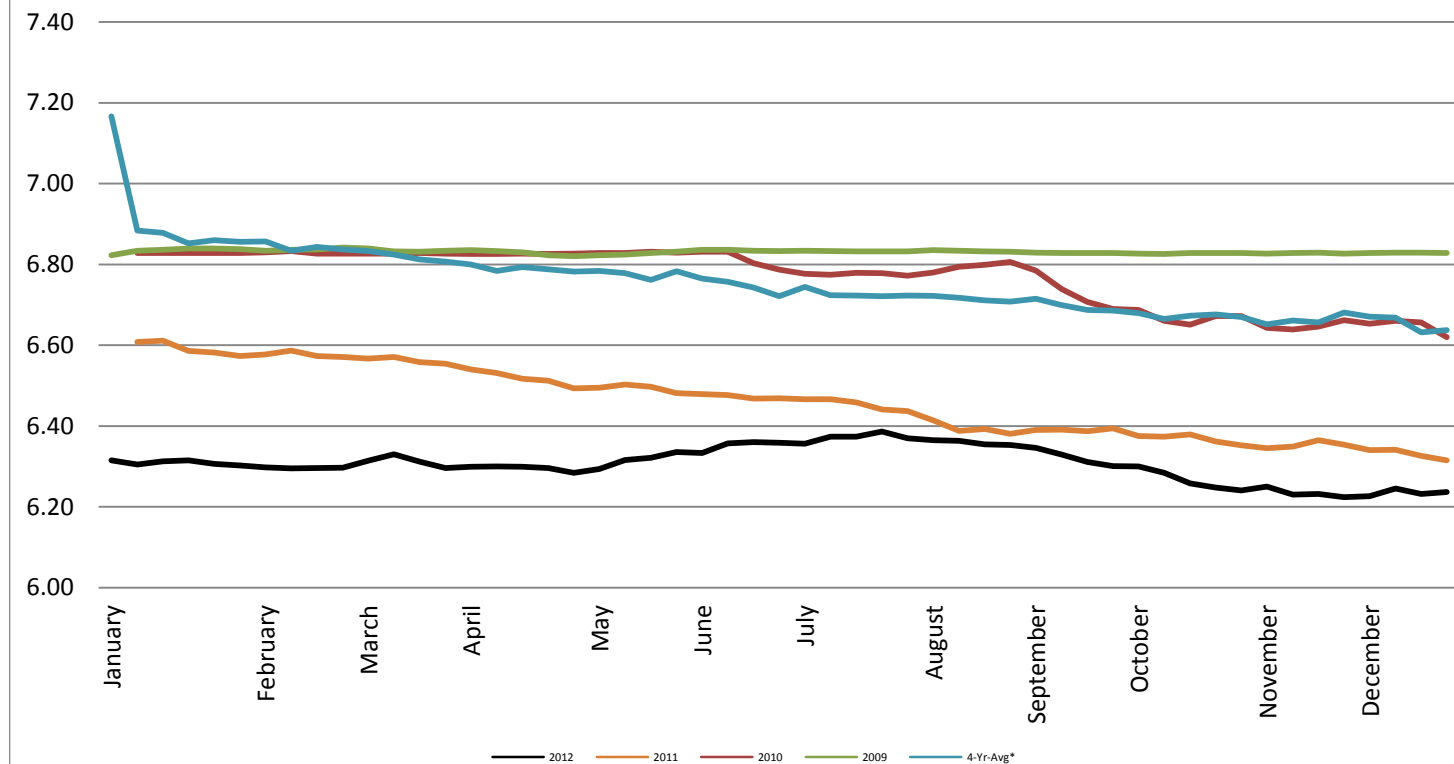
Federal Reserve Bank of New York



Foreign Exchange Rate - Chinese Yuan

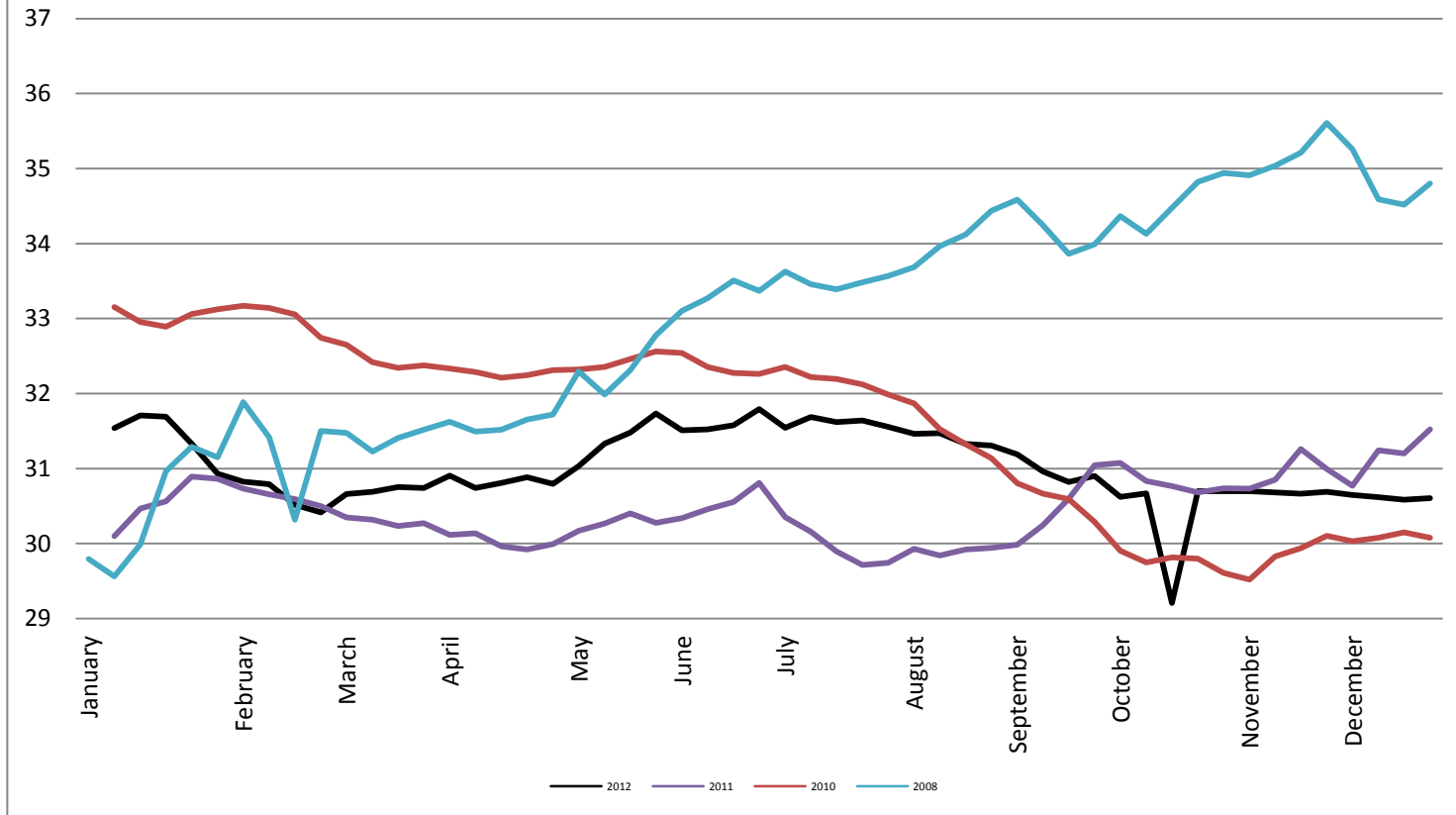
Foreign Exchange Rate - Chinese Yuan

Federal Reserve Bank of New York



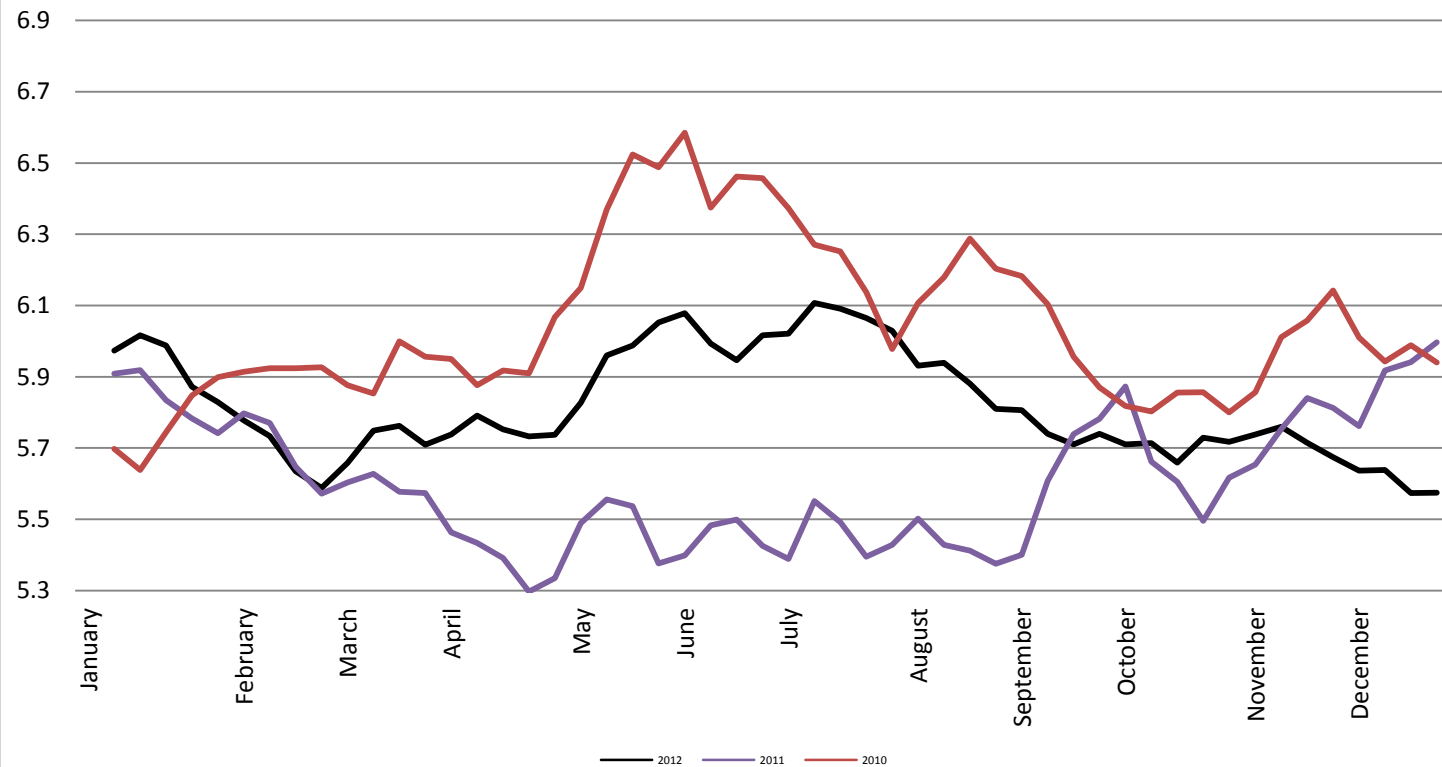
Foreign Exchange Rate

Thailand - Baht *Federal Reserve Bank of New York*



Foreign Exchange Rate

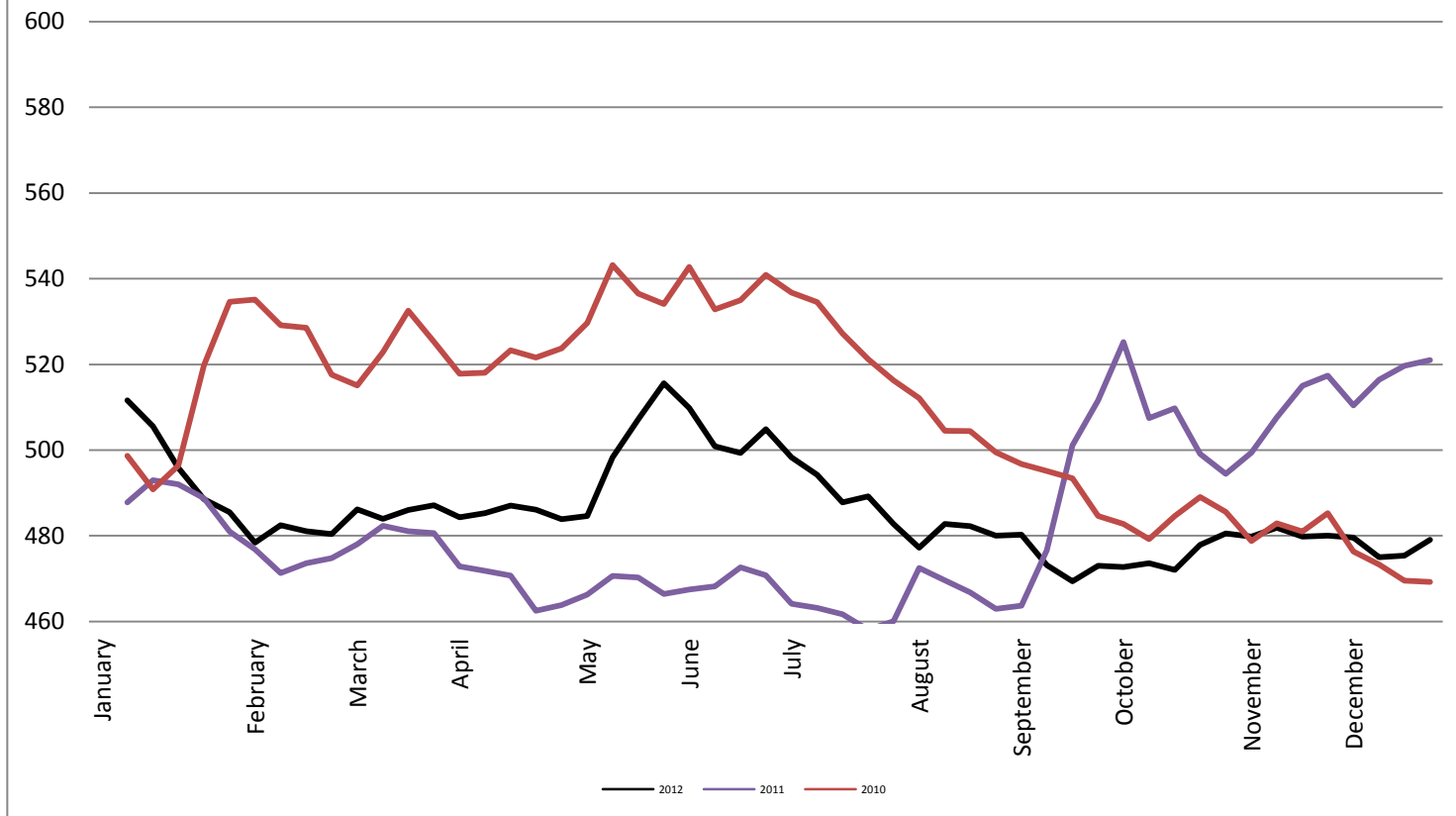
Nowegian Krone *Federal Reserve Bank of New York*



Foreign Exchange Rate

Chile Peso

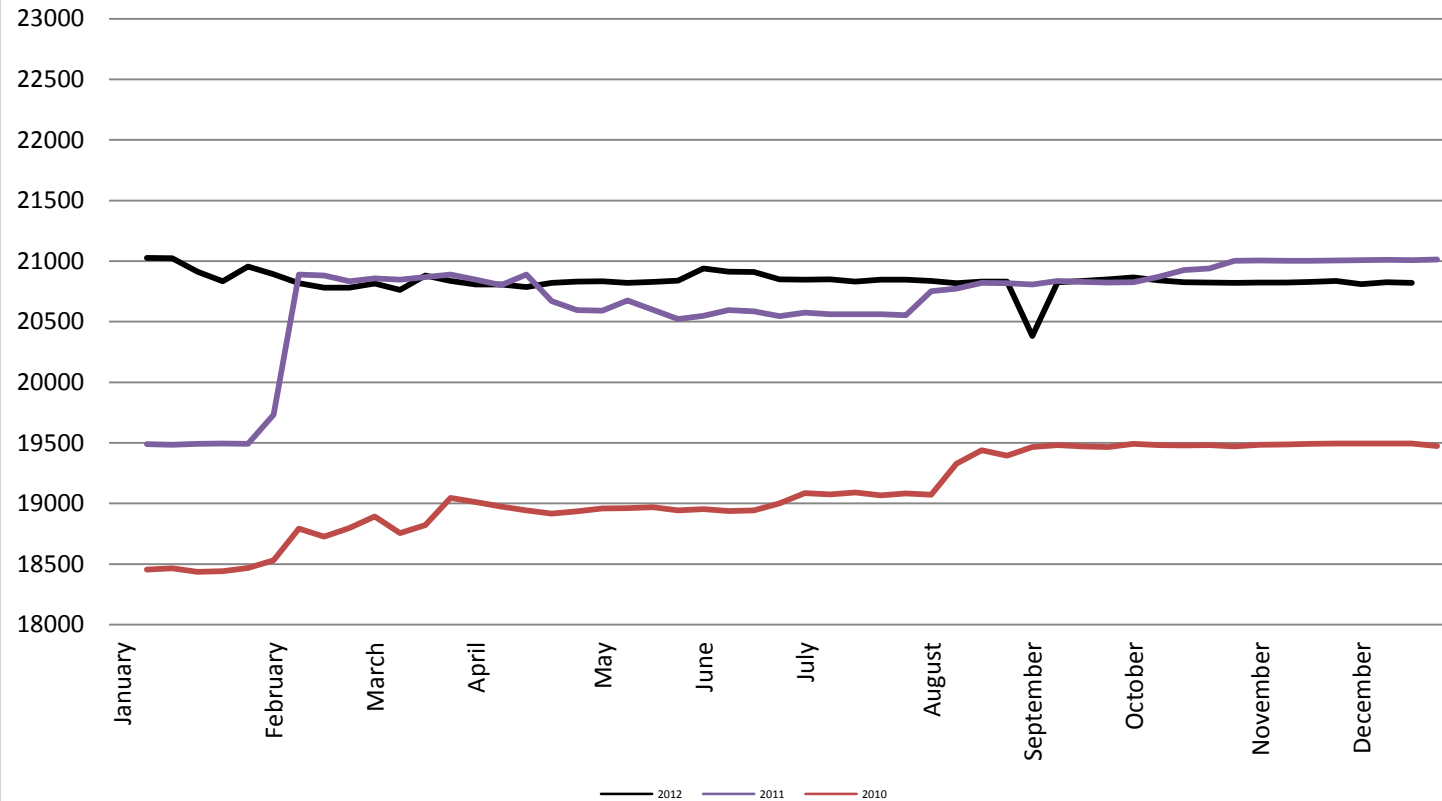
Federal Reserve Bank of New York



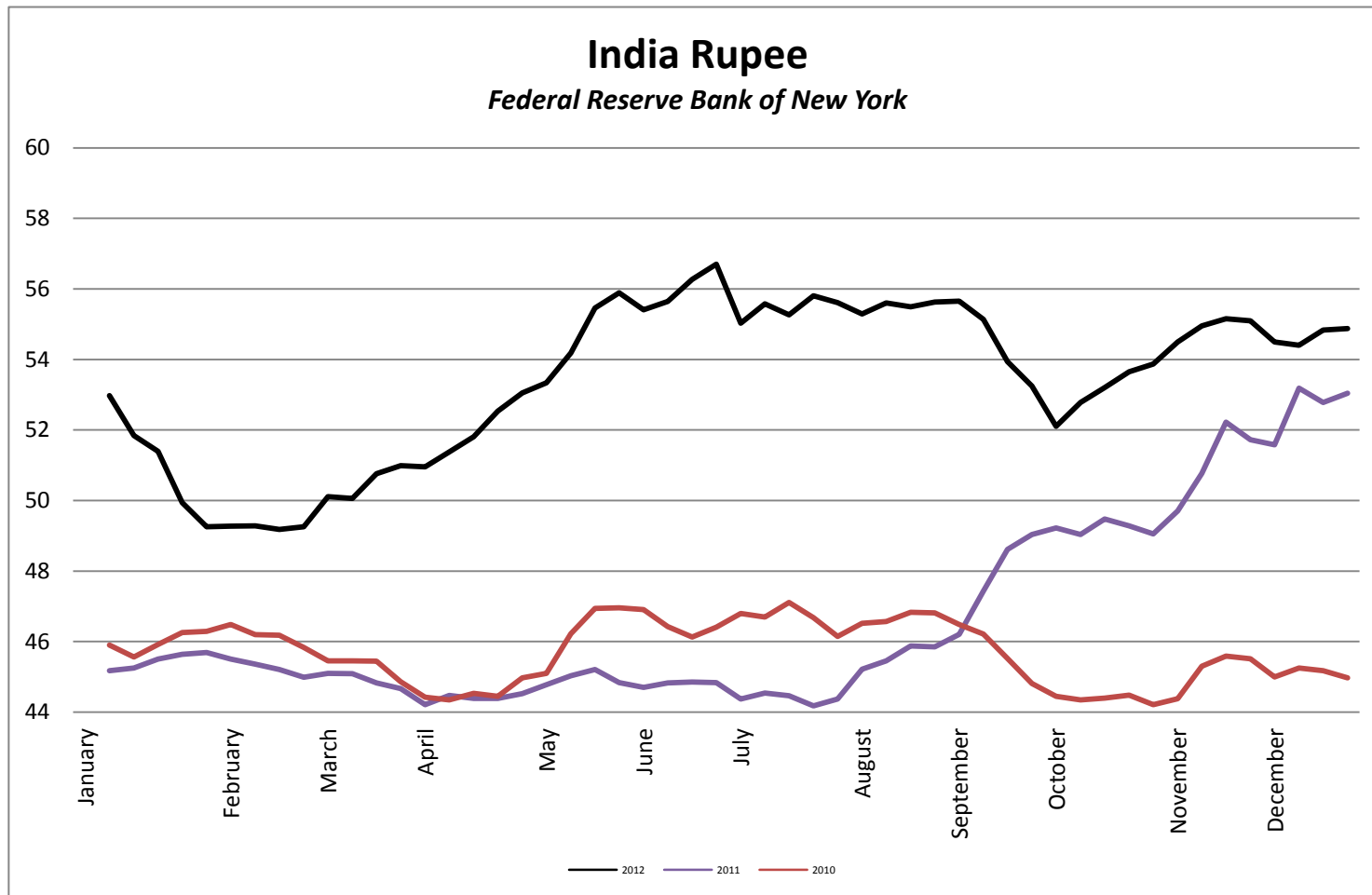
Foreign Exchange Rate

Vietnam Dong

Federal Reserve Bank of New York



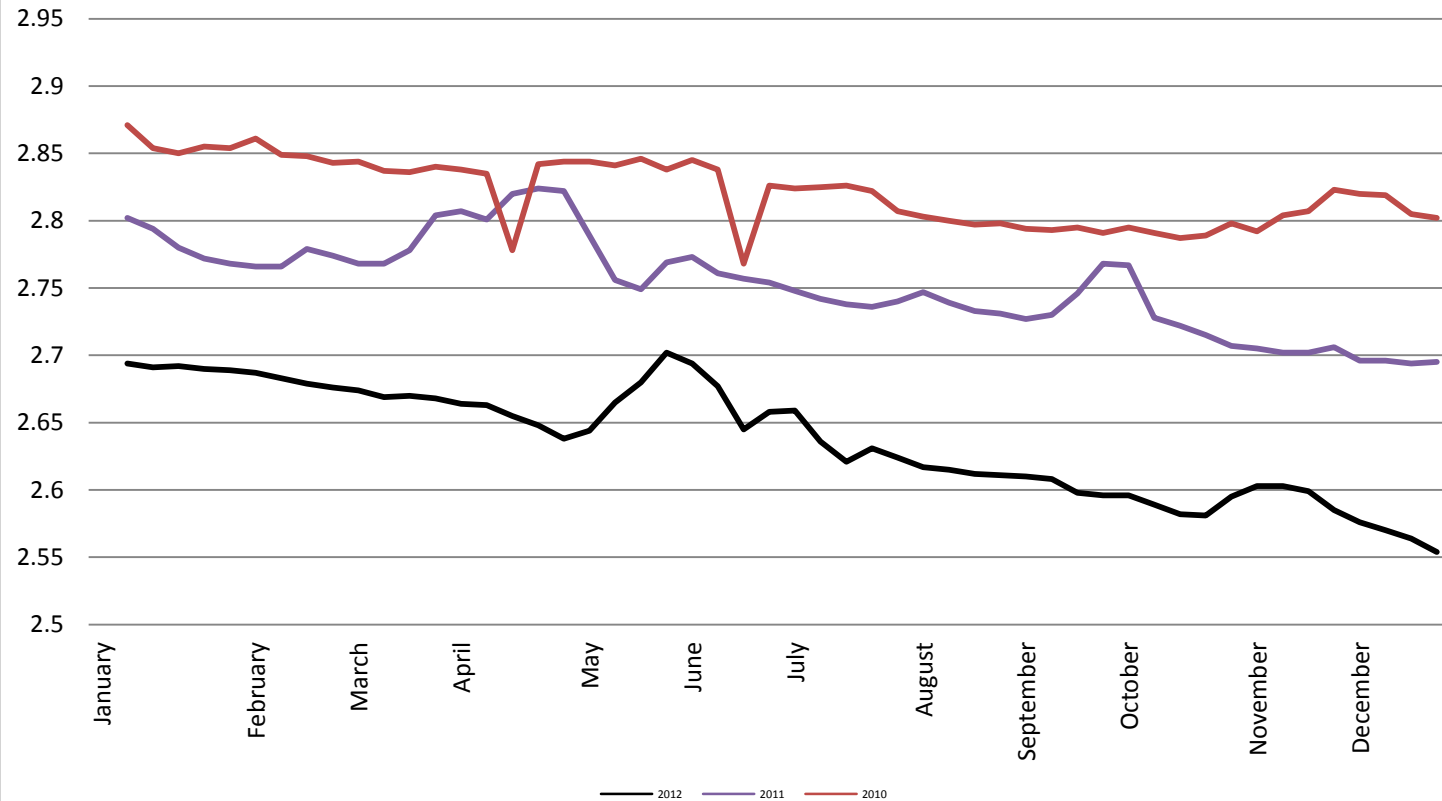
Foreign Exchange Rate



Foreign Exchange Rate

Peruvian New Sol

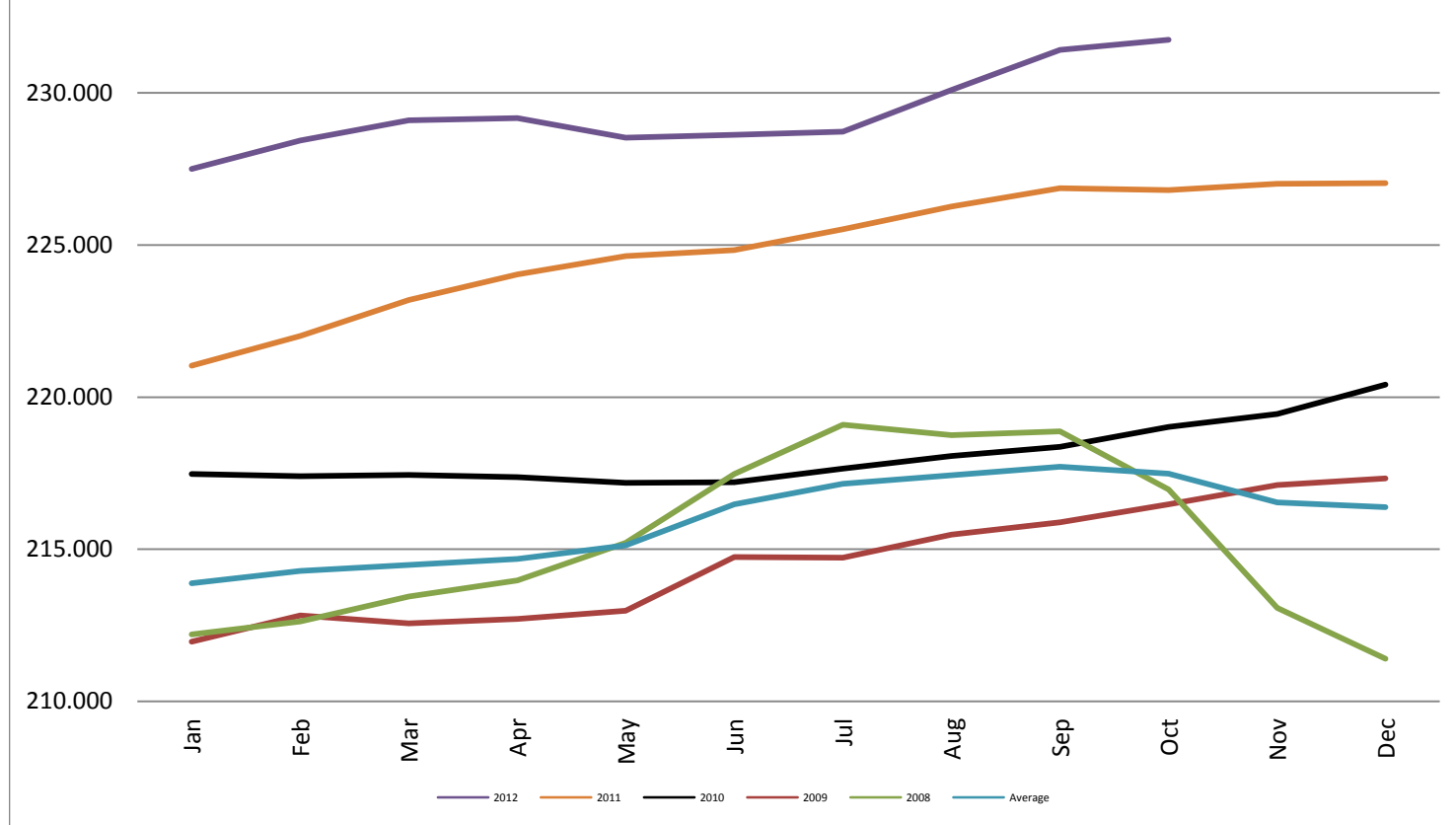
Federal Reserve Bank of New York



Consumer Price Index - Monthly

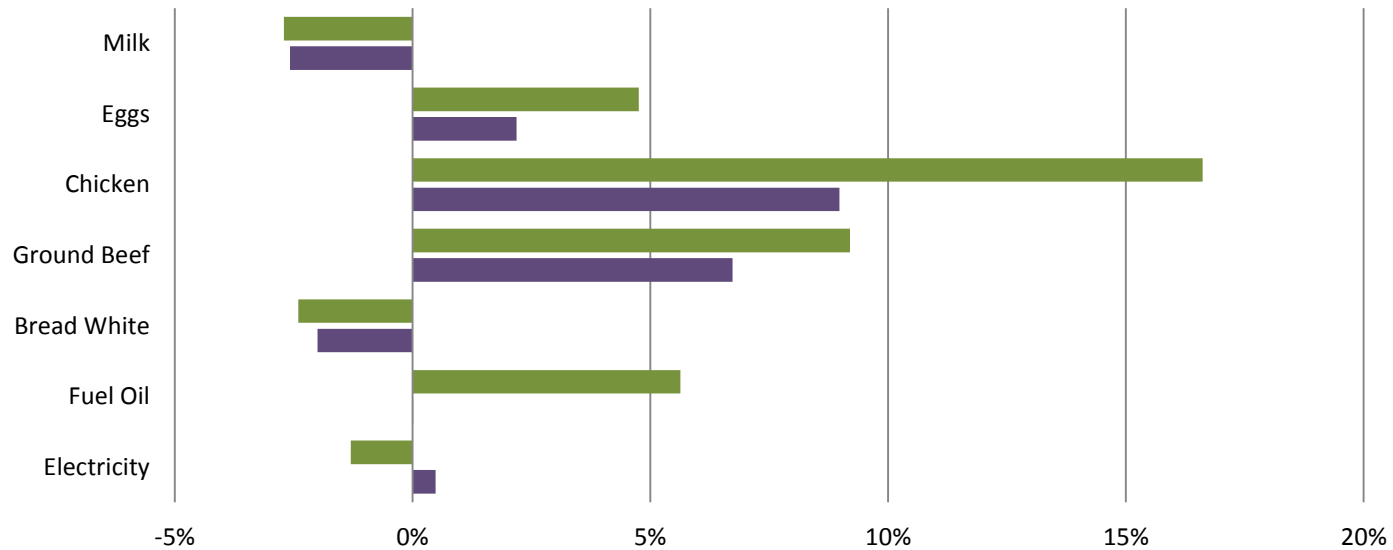
Consumer Price Index - Monthly

Bureau of Labor and Statistics



Consumer Price Index- Growth Percentage

Bureau of Labor & Standards



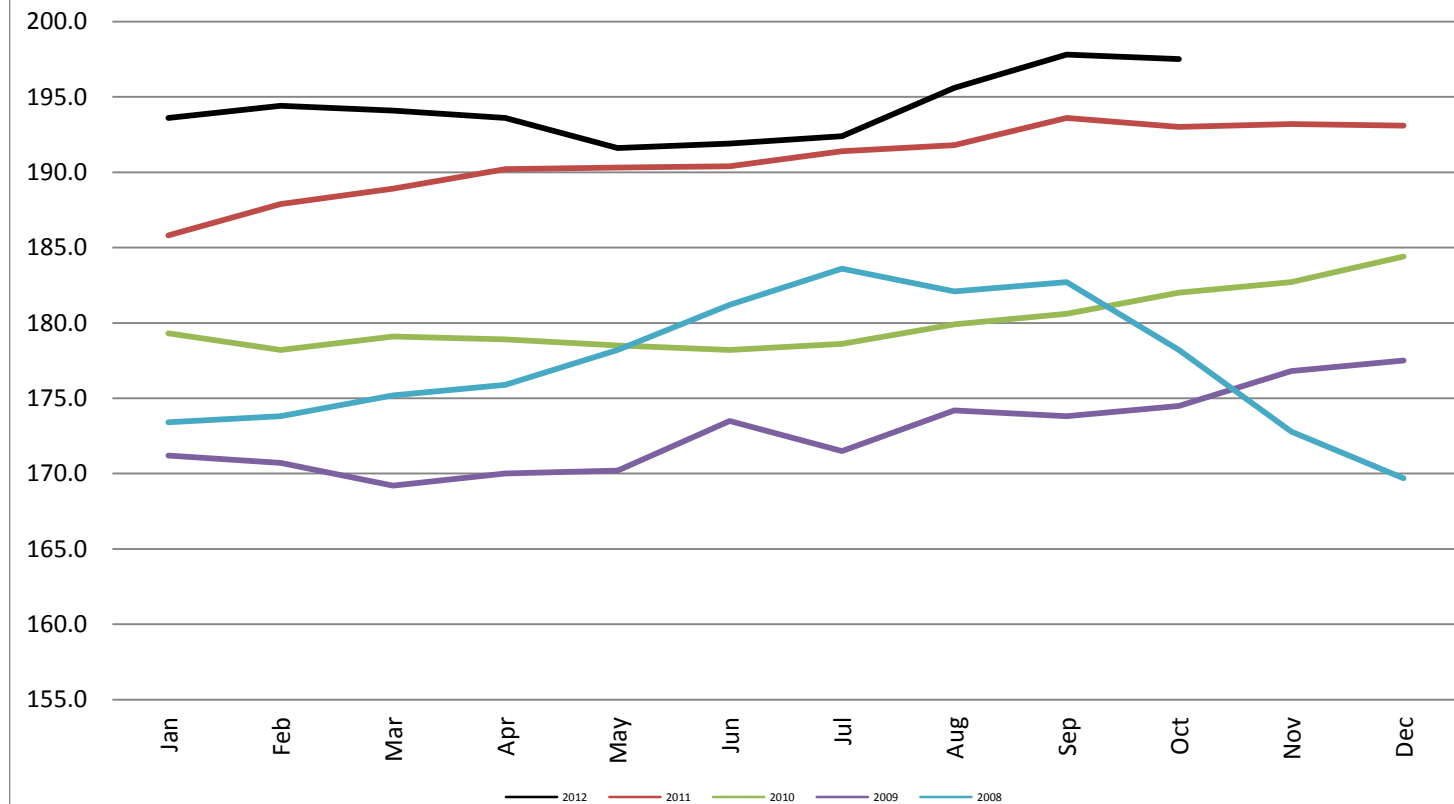
	Electricity	Fuel Oil	Bread White	Ground Beef	Chicken	Eggs	Milk
OCT 12 vs. OCT 11	-0.012987588	0.056287754	-0.024021963	0.091982598	0.166158537	0.047568145	-0.027056875
YTD	0.004839689	0.000138365	-0.019981541	0.067273583	0.089726381	0.021870585	-0.025810215

■ OCT 12 vs. OCT 11 ■ YTD

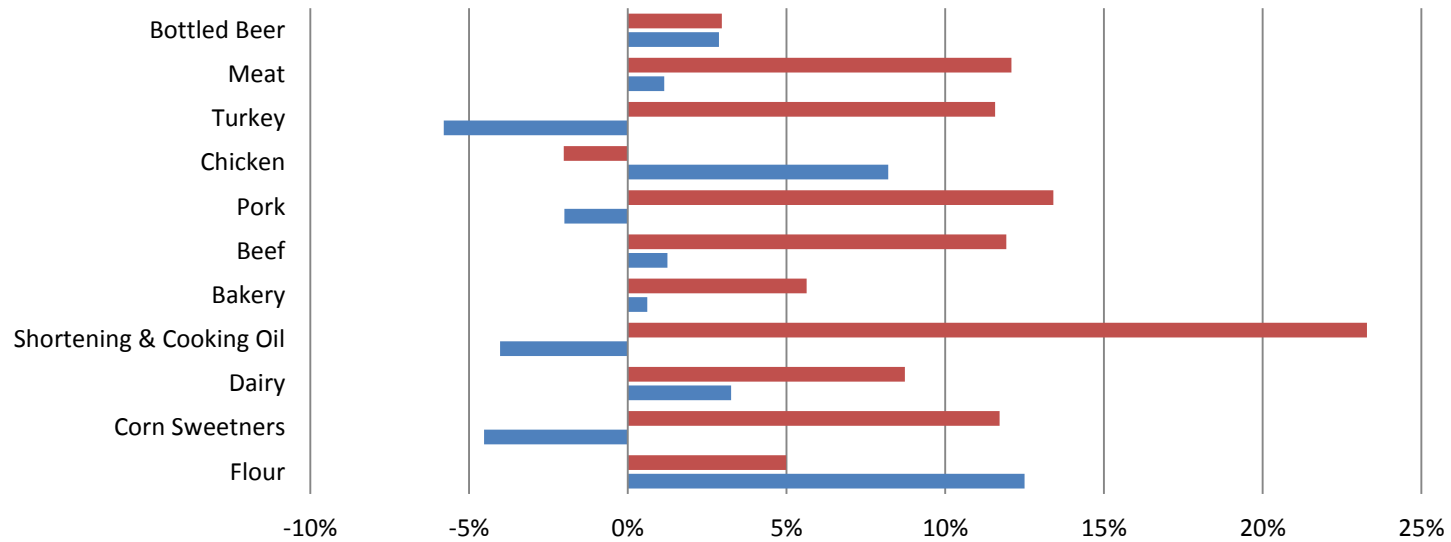
Producer Price Index - Monthly

Producer Price Index - Monthly

Bureau of Labor and Statistics



PPI Commodities - Growth Percentage
Bureau of Labor & Standards



	Flour	Corn Sweetners	Dairy	Shortening & Cooking Oil	Bakery	Beef	Pork	Chicken	Turkey	Meat	Bottled Beer
■ OCT 12 VS. OCT 11	0.049847	0.117083	0.087288	0.232808	0.056349	0.119274	0.134013	0.020148	0.115690	0.120879	0.029615
■ YTD	0.124941	0.045281	0.032520	0.040211	0.006165	0.012509	0.019938	0.082036	0.057999	0.011487	0.028693

■ OCT 12 VS. OCT 11 ■ YTD