

Key Commodity Report Weekly

March 18, 2013

Commodity Activity - Weekly Average

3/11/2013		This Week	Last Week	YTD Avg	Last Year	vs. Last Week	vs. Last Year
CME Group							
Corn	↑	730.05	719.95	712.44	669.25	1.40%	9.08%
Soybean	↓	1467.6	1496.7	1450.2	1354.5	-1.94%	8.35%
Soy Meal	↓	429.06	434.68	421.28	367.04	-1.29%	16.90%
Soybean Oil	↓	0.4974	0.5012	0.5088	0.5479	-0.76%	-9.22%
Rough Rice	↓	14.68	15.13	15.40	14.54	-2.94%	1.00%
Wheat	↑	709.90	689.05	742.09	656.95	3.03%	8.06%
Cheddar Barrel	↑	1.587	1.560	0.000	1.556	1.73%	1.99%
Cheddar Block	↑	1.603	1.572	1.656	1.535	1.97%	4.46%
Milk Class III	↑	16.98	16.97	0.00	15.51	0.07%	9.46%
Butter AA	↑	1.637	1.608	0.000	1.501	1.84%	9.10%

Source: CME Group

USDA Weekly Prices

Live Cattle	↓	1.279	1.280	0.000	1.268	-0.03%	0.89%
Course Ground Beef	↑	2.190	2.116	0.000	2.000	3.48%	9.52%
Live Hog	↓	0.4820	0.4960	0.5368	0.5950	-2.82%	-18.99%
Pork Bellies	↔	1.32	1.32	1.36	1.10	0.00%	20.00%
Chicken Whole (GA Dock)	↑	1.0150	1.0125	1.0002	0.9300	0.25%	9.14%
Crude Corn Oil	↑	48.70	47.90	51.22	59.60	1.67%	-18.29%
Crude Peanut Oil	↓	94.00	94.20	107.05	112.00	-0.21%	-16.07%

Source: USDA

NYMEX Futures & Retail

Crude Oil	↑	92.72	90.98	94.32	106.13	1.92%	-12.64%
Heating Oil No.2 Spot	↔	293.80	293.80	307.42	324.64	0.00%	-9.50%
On Highway Diesel	↓	408.80	413.00	401.93	412.30	-1.02%	-0.85%
On Highway Gasoline	↓	371.00	375.90	352.01	382.90	-1.30%	-3.11%
Natural Gas	↑	3.732	3.548	3.390	2.291	5.19%	62.90%

Source: New York Mercantile Exchange

Federal Reserve

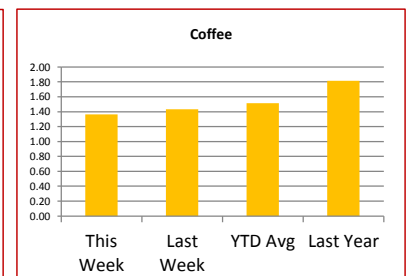
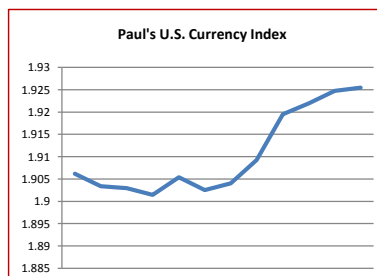
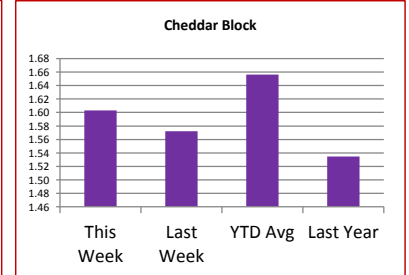
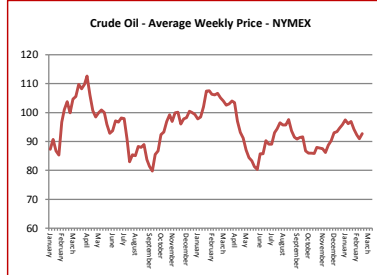
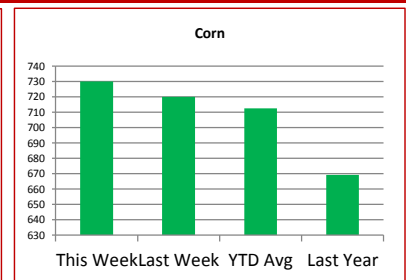
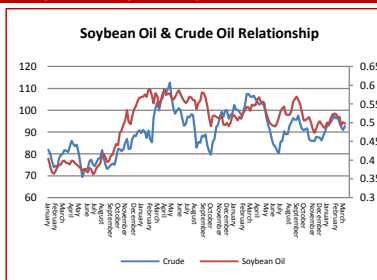
*Euro	↓	1.2996	1.3027	1.3254	1.3084	-0.24%	-0.67%
*British Pound	↓	1.4962	1.5057	1.5602	1.5689	-0.63%	-4.63%
Canadian Dollar	↓	1.0258	1.0282	1.0054	0.9916	-0.23%	3.45%
Chinese Yuan	↓	6.215	6.219	6.225	6.330	-0.06%	-1.82%
Swiss Frank	↑	0.949	0.945	0.928	0.923	0.43%	2.83%

Source: Federal Reserve Bank of New York

NYBOT Futures

Sugar 16	↑	21.10	20.98	36.41	34.25	0.57%	-38.39%
Coffee	↓	1.3650	1.4335	1.5125	1.8135	-4.78%	-24.73%

Source: Intercontinental Exchange



Market Commentary

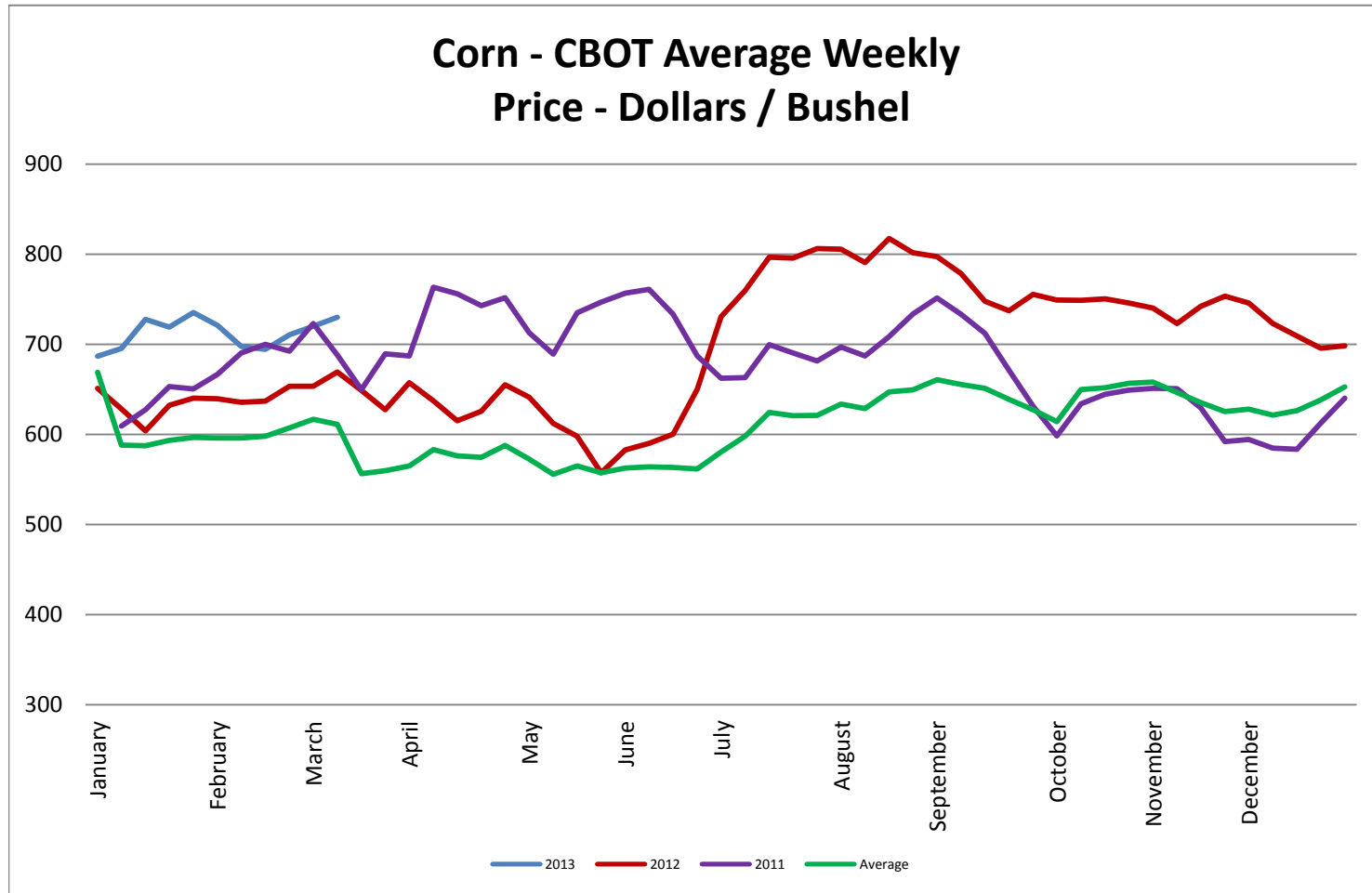
Commentary: Frankly, the information this week, sounds a lot like last week. That is true. The markets are looking for fresh market news as the markets do seem to be locked in ranges with nothing to push them through any support or resistance points. The harvest continues ahead of pace in South America. China and other countries are shifting their buying to those areas for corn and beans right now but do keep buying from the U.S. in case of any issues, like dockworker or trucker strikes that loom annually in South America. One issue in SA is that the harvest numbers seem to be shrinking every week. Still their crop that is likely to be a record. The U.S. is gearing up to plant. Planting intentions are due out later this month. Many thought that biodiesel would have had a greater effect on the soybean oil, but they have not kept pace with expectations. Some good rains have once again materialized in the mid-western growing region in the U.S. helping push prices down by last week's end, but it has had little effect on the soil's overall moisture. Eyes are on exports, weather, and the SA harvest, and the Euro is back in the news as Cypress tries to tax its way out of trouble. Euro troubles never really went away, as huge problems loom for the Eurozone. Soybean oil should be moving downward to begin this week making its way to near 49 cents.

Corn futures closed between \$7.16-1/2 and \$7.41-1/4 per bushel, ending the week at \$7.17.
 Soybean futures closed between \$14.23 and \$15.14-3/4 per bushel, ending the week at \$14.23.
 Soybean meal futures closed between \$418.80 and \$438.10 per short ton, ending the week at \$418.00.
 Soybean oil futures closed between \$0.4936 and \$0.5024 per pound, ending the week at \$0.4991.
 Wheat futures closed between \$6.94 and \$7.24-3/4 per bushel, ending the week at \$7.23.

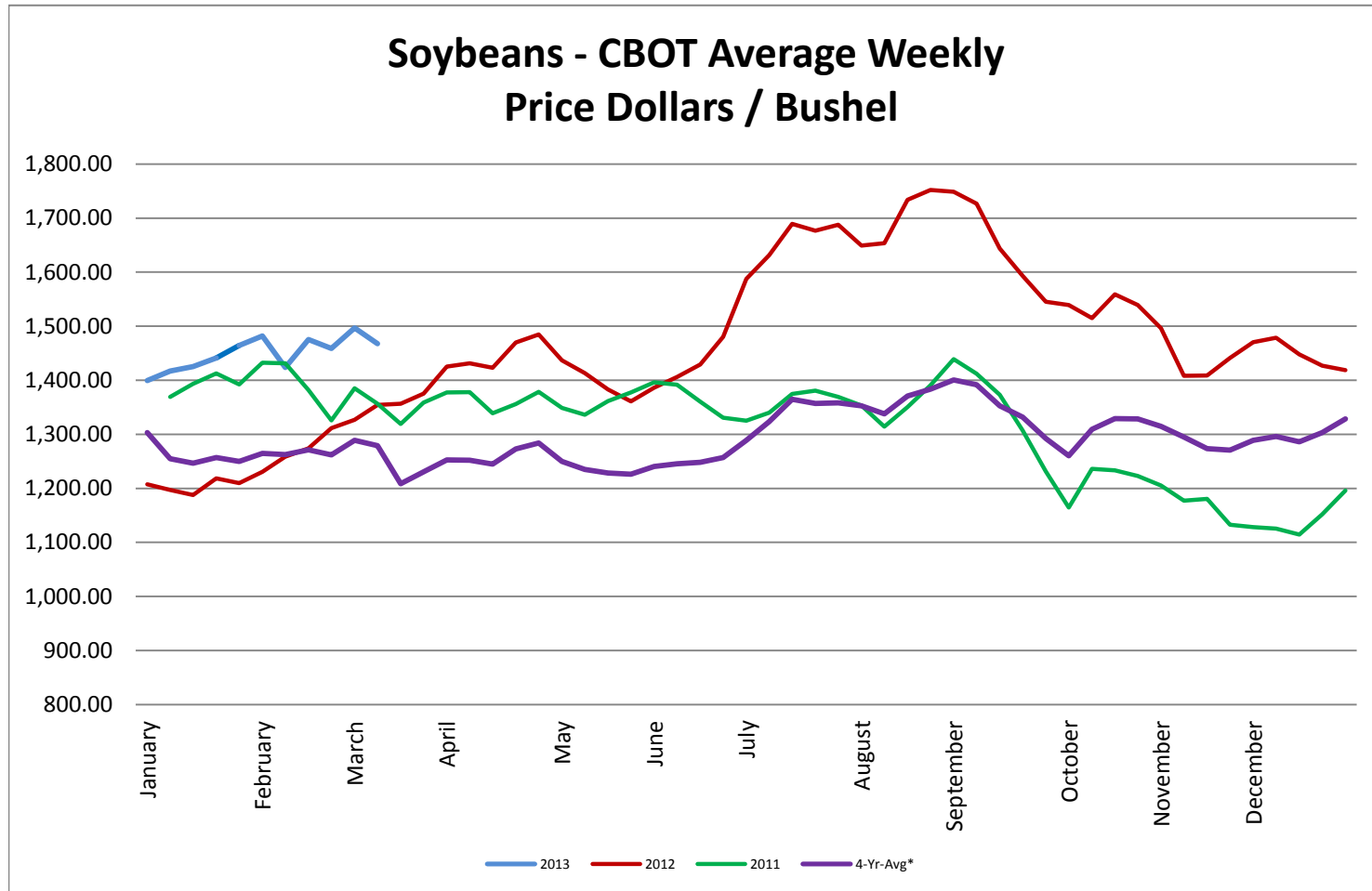
* Used as the indexing unit of measure for this exchange rate

Commodity Information: Commodity information found in this sheet is publically available. It can be found from numerous sources, all of which are noted. This report is for informational purposes only. Please do not make hedging or buying decisions based on this report. Please note that rounding can affect the percent of change values.* Paul's Currency Index compares the U.S. Dollar to five other currencies, Euro, British Pound, Swiss Frank, Canadian Dollar, and Chinese Yuan.

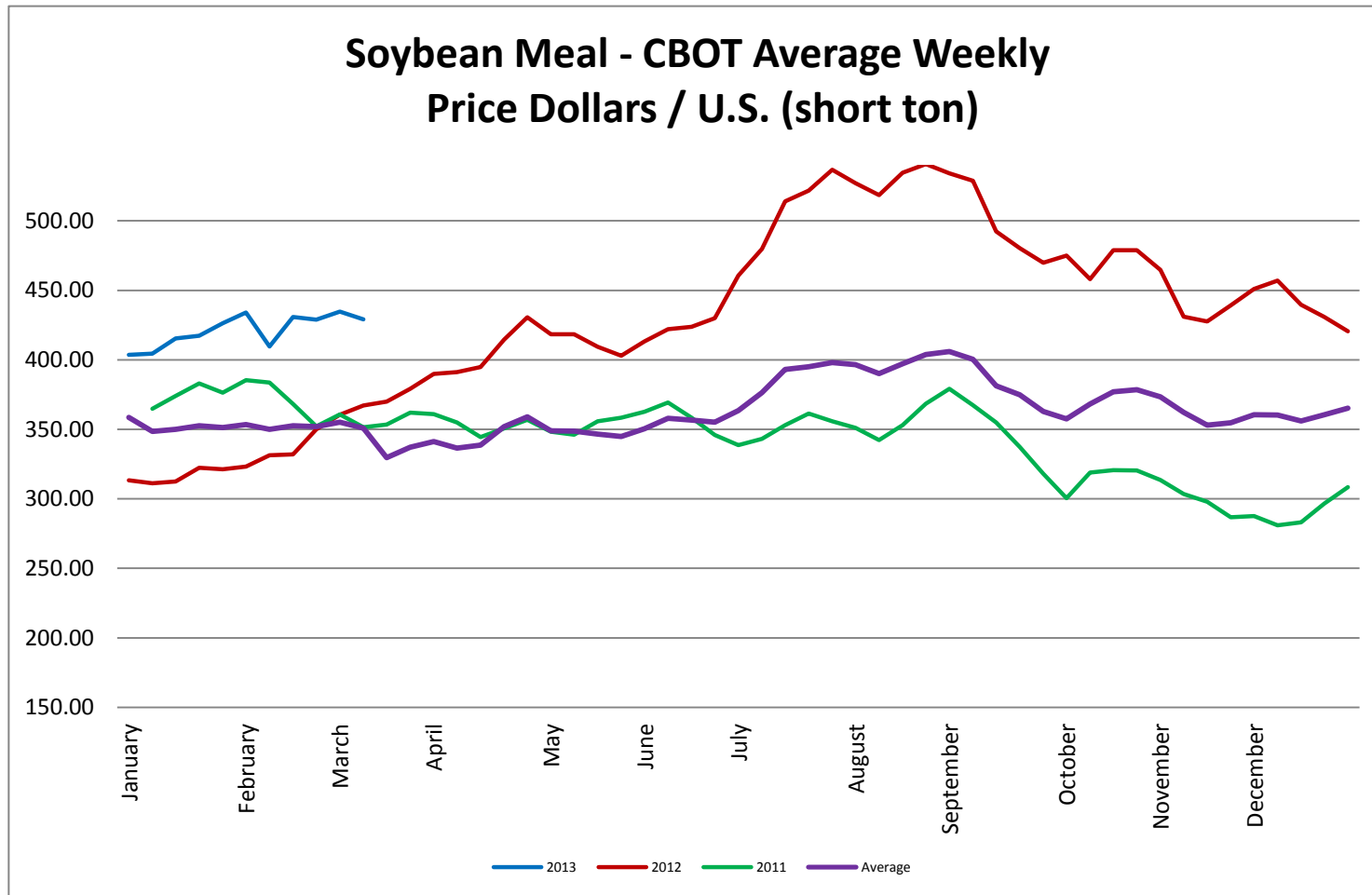
Corn - CBOT Weekly Futures Price



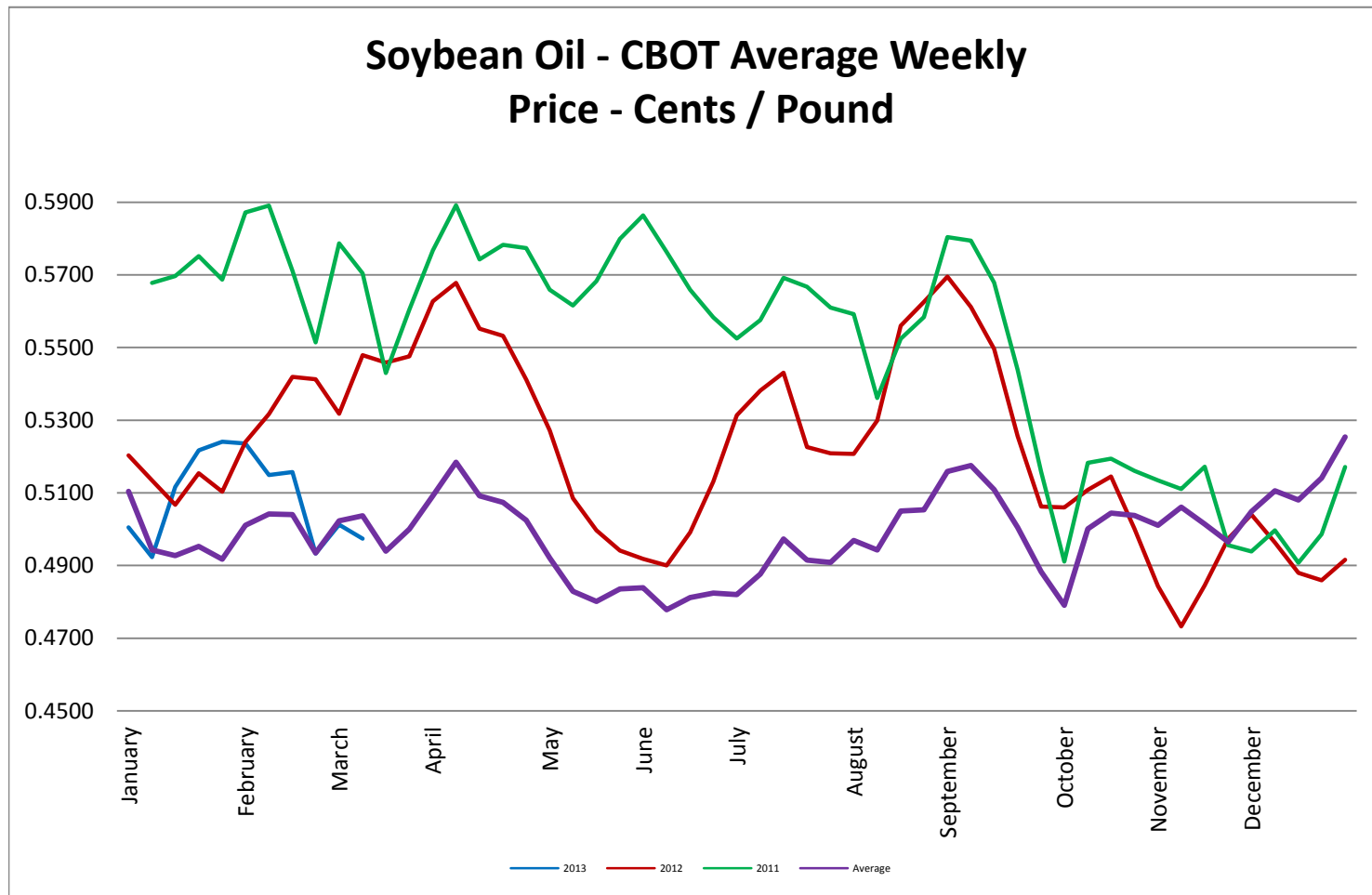
Soybeans - CBOT Weekly Average Price - Dollars / Bushel



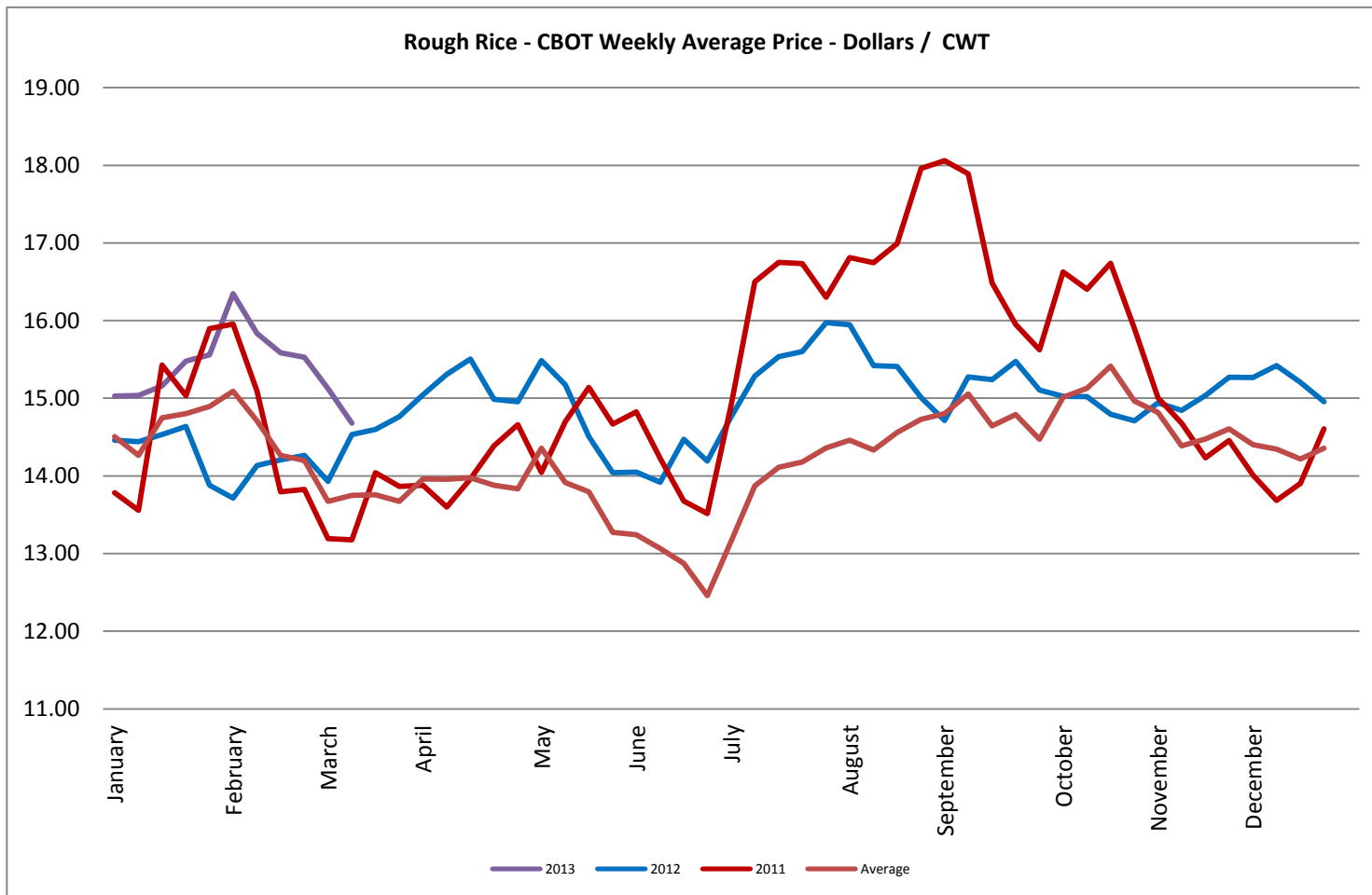
Soybean Meal - CBOT Weekly Average Price - Dollars / US Ton



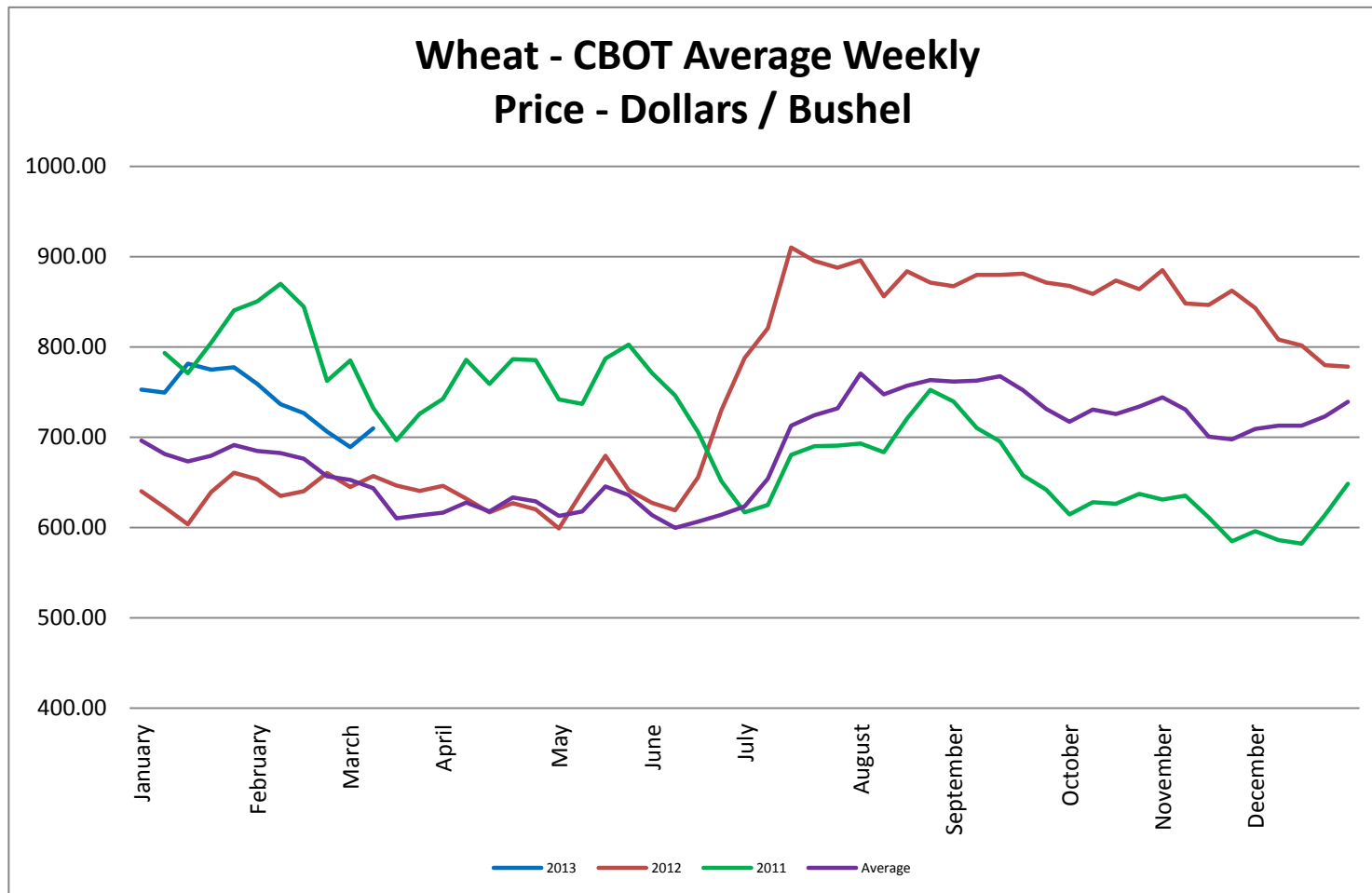
Soybean Oil - CBOT Weekly Average Price - Cents / Pound



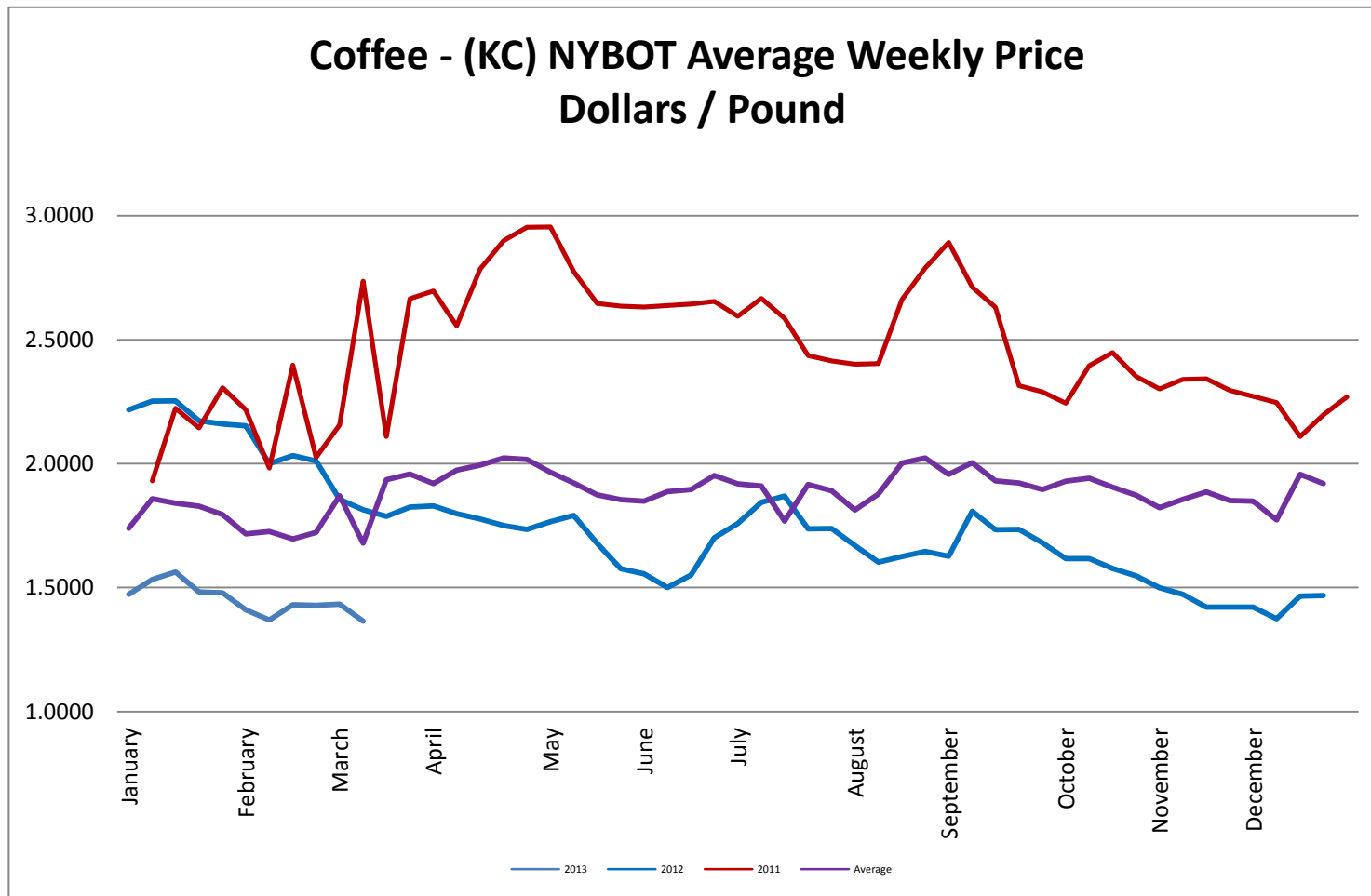
Rough Rice - CBOT Weekly Average Price - Dollars / CWT



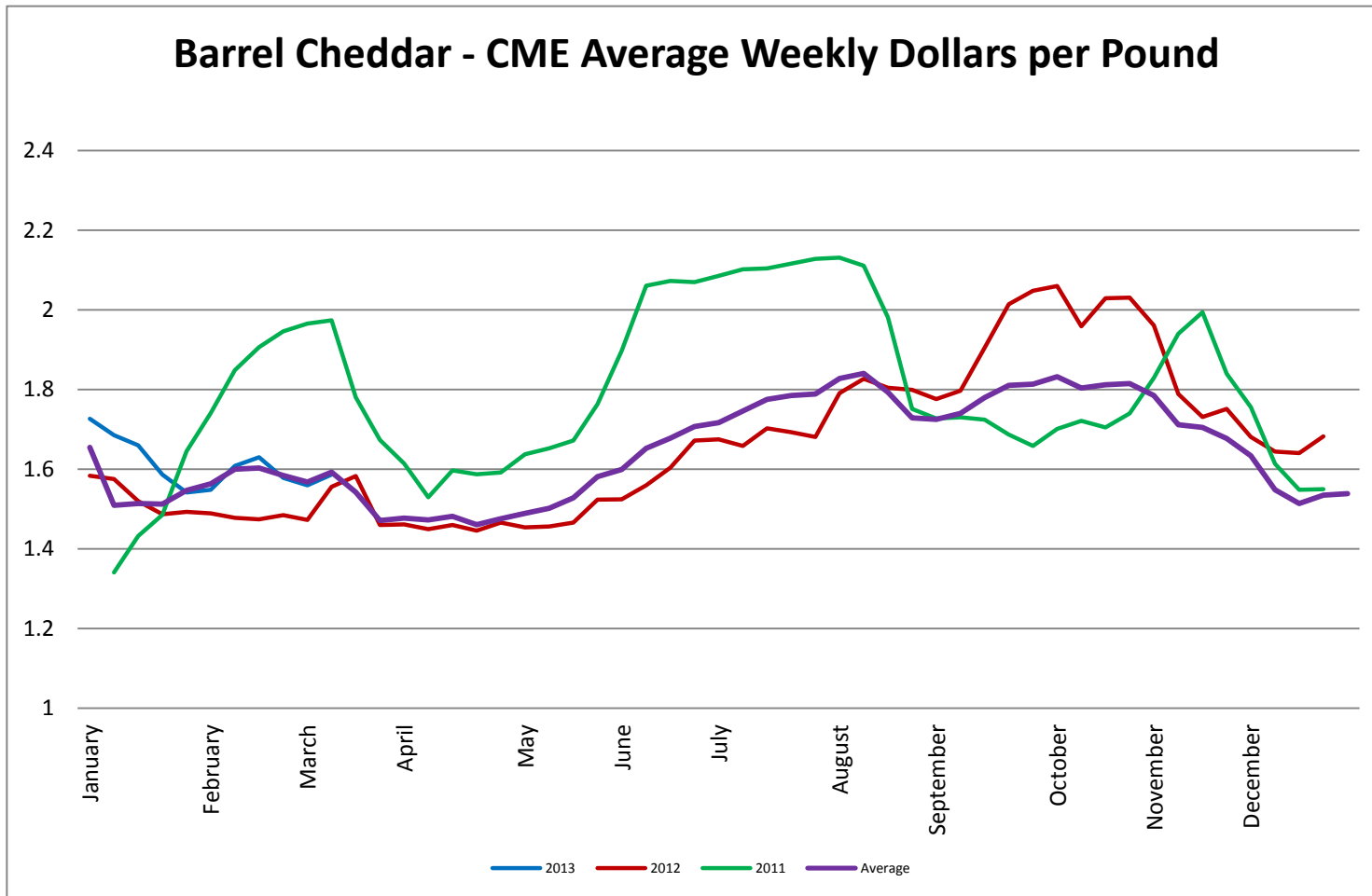
Wheat - CBOT Weekly Average Price - Dollars / Bushel



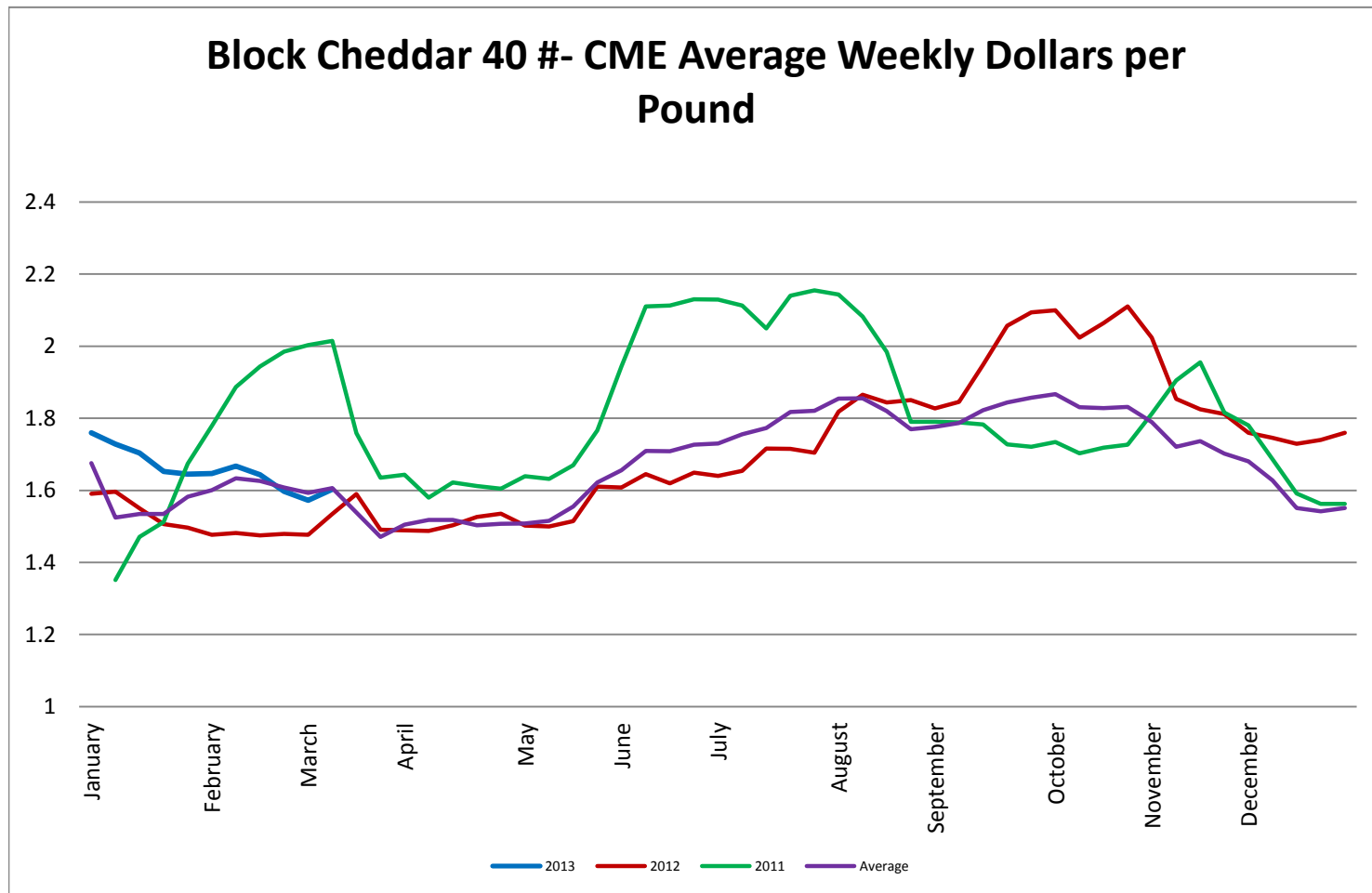
Coffee - (KC) NYBOT Average Weekly Price - Dollars per Pound



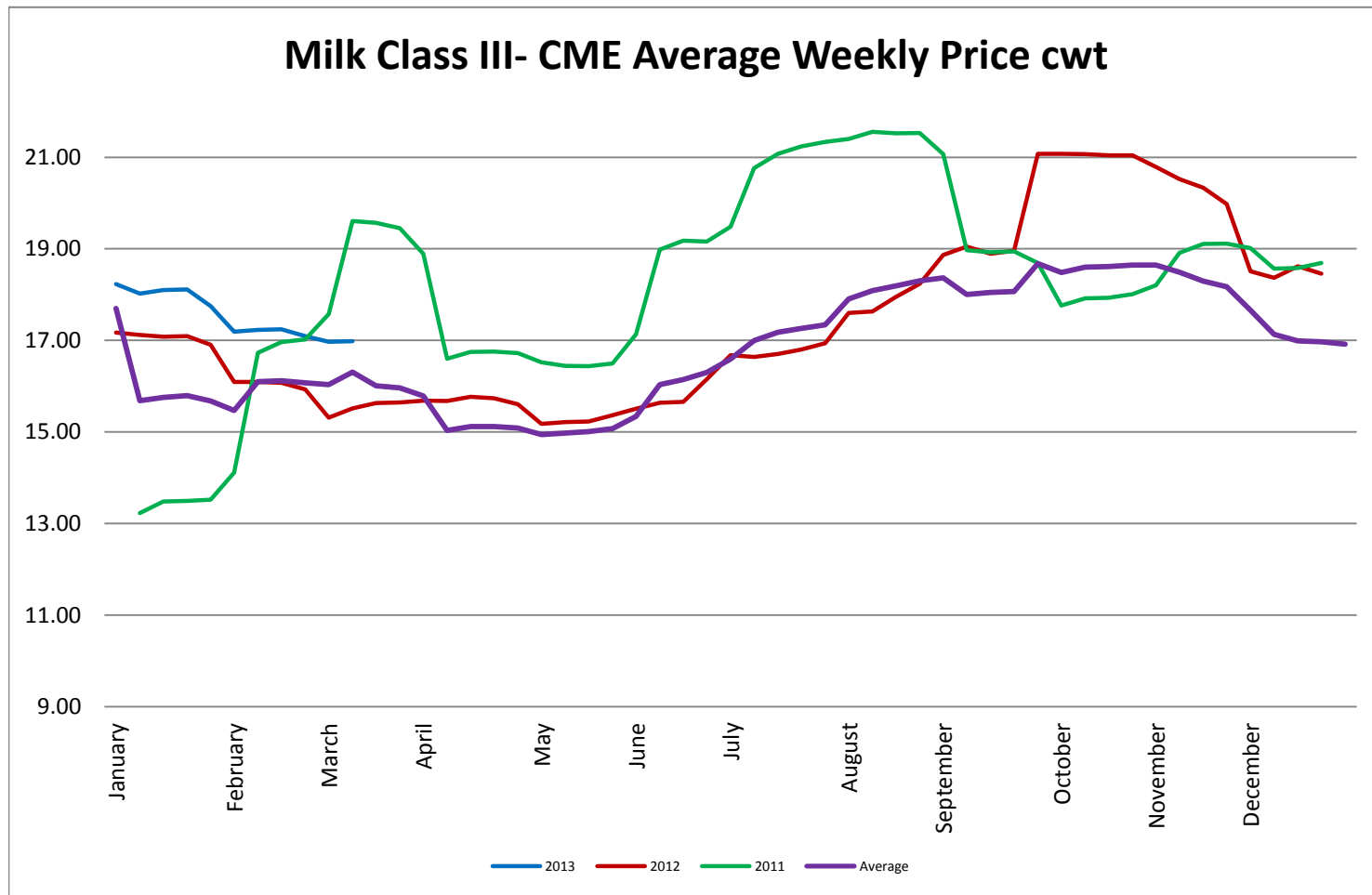
Barrel Cheddar - CME Average Weekly Price / Pound



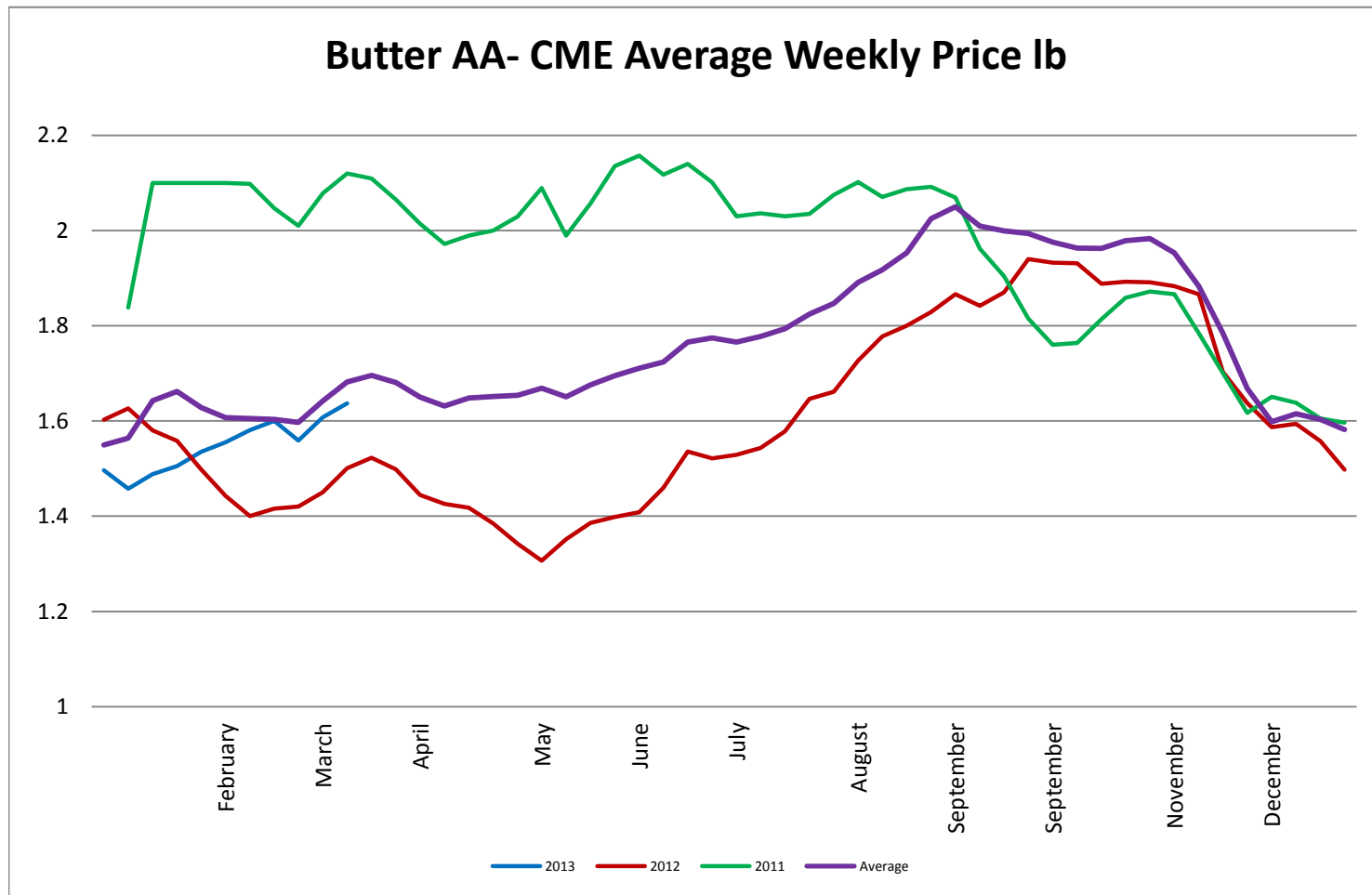
40 LB Block Cheddar - CME Average Weekly Price / Pound



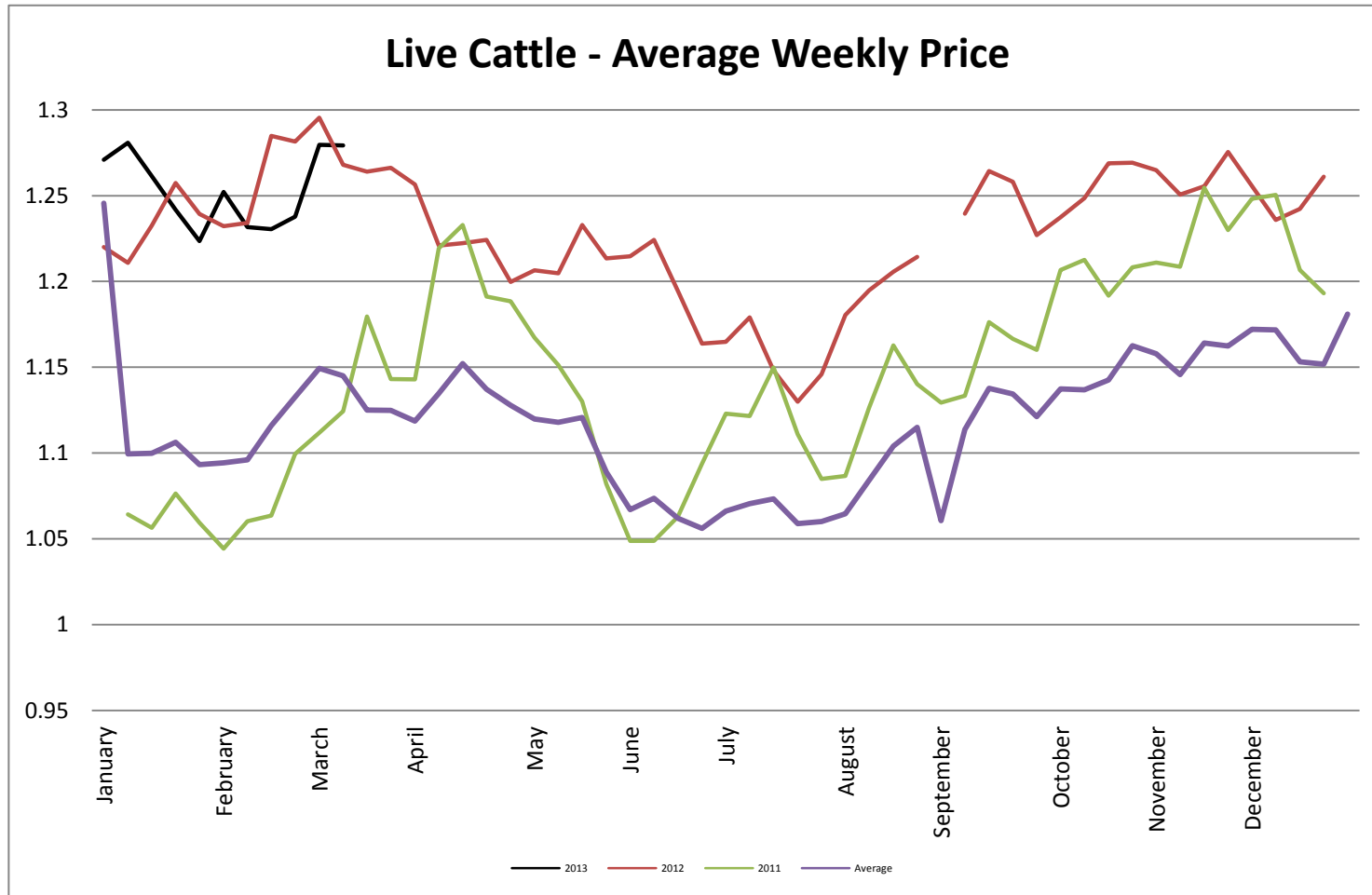
Milk Class III - CME Average Weekly Price CWT



Butter AA - CME Average Weekly Price lb



Live Cattle - Average Weekly Price USDA - 6 State Average

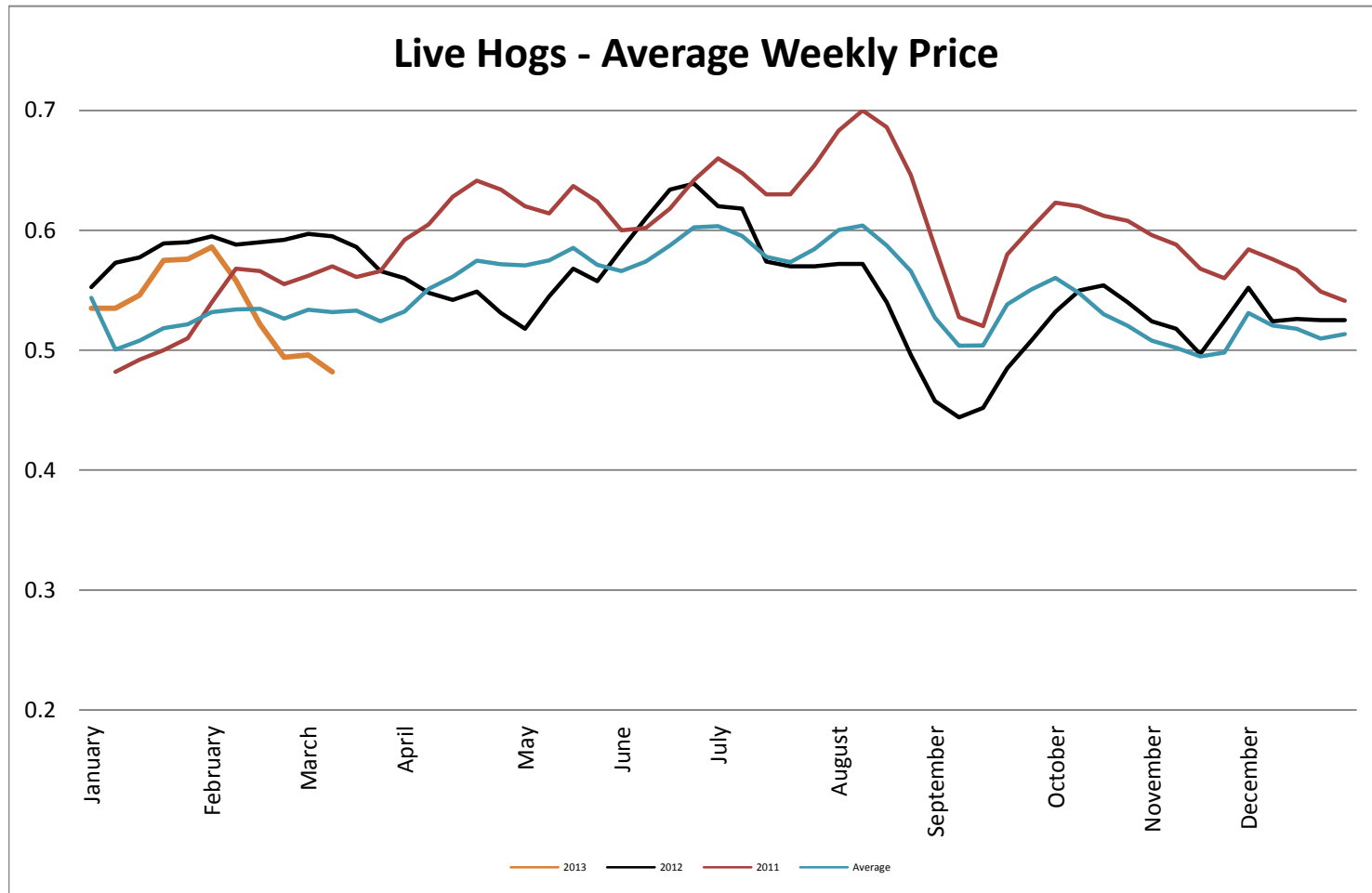


USDA Coarse ground 81% Steer & Heifer Source

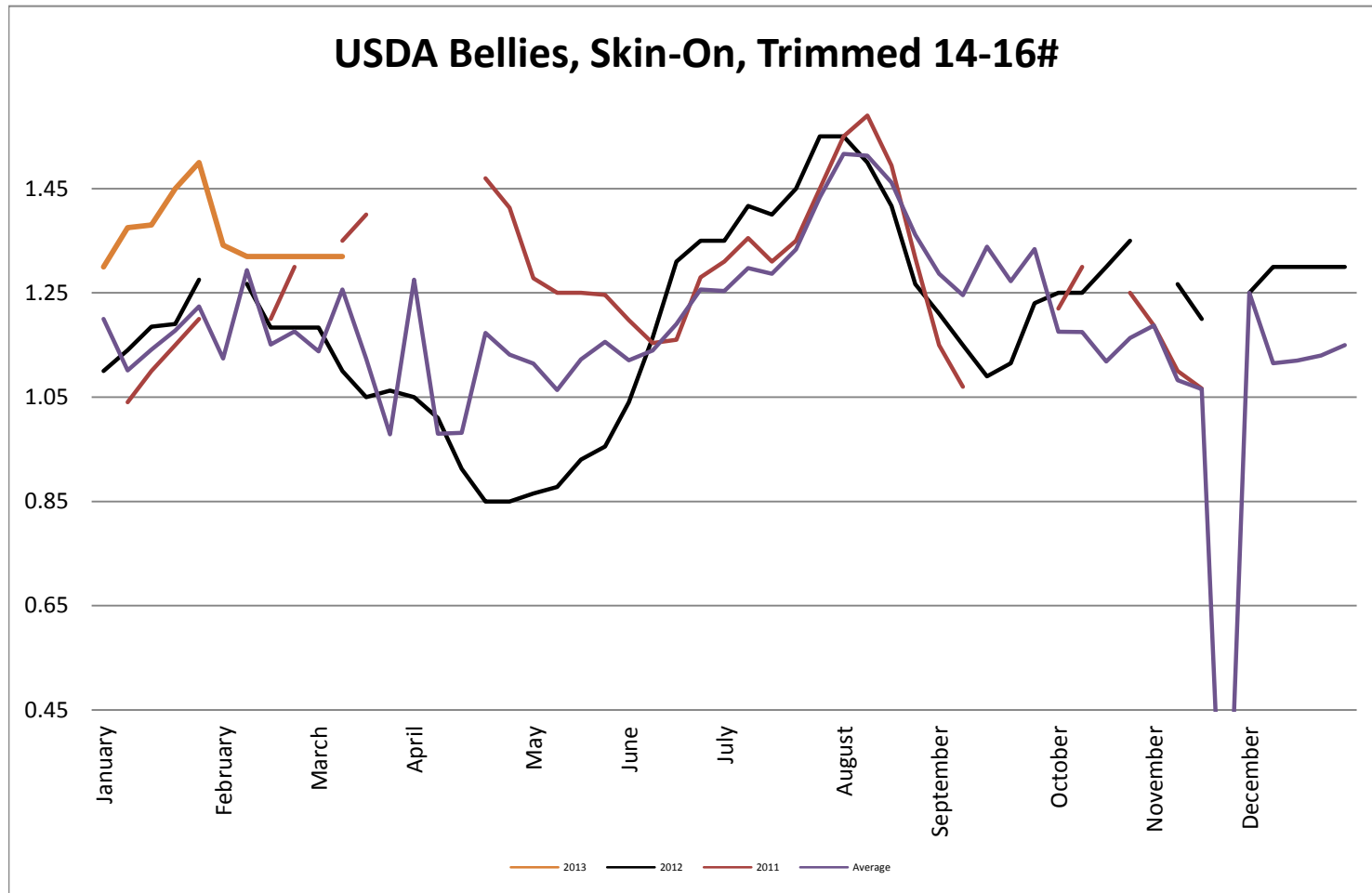
USDA Coarse ground 81% Steer & Heifer Source



USDA Live Hogs - Average Weekly Price

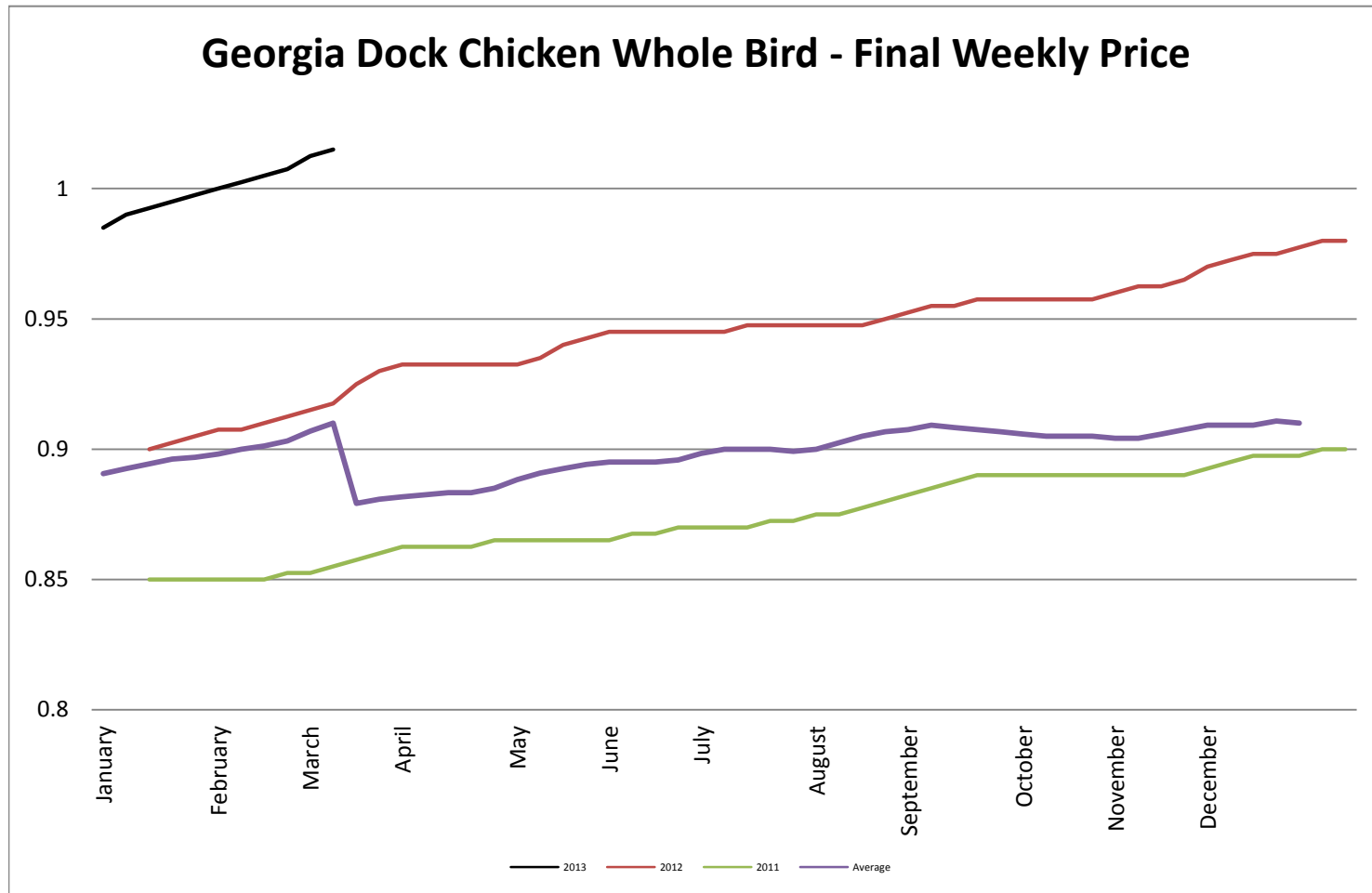


USDA Bellies, Skin-On, Trimmed 14-16#

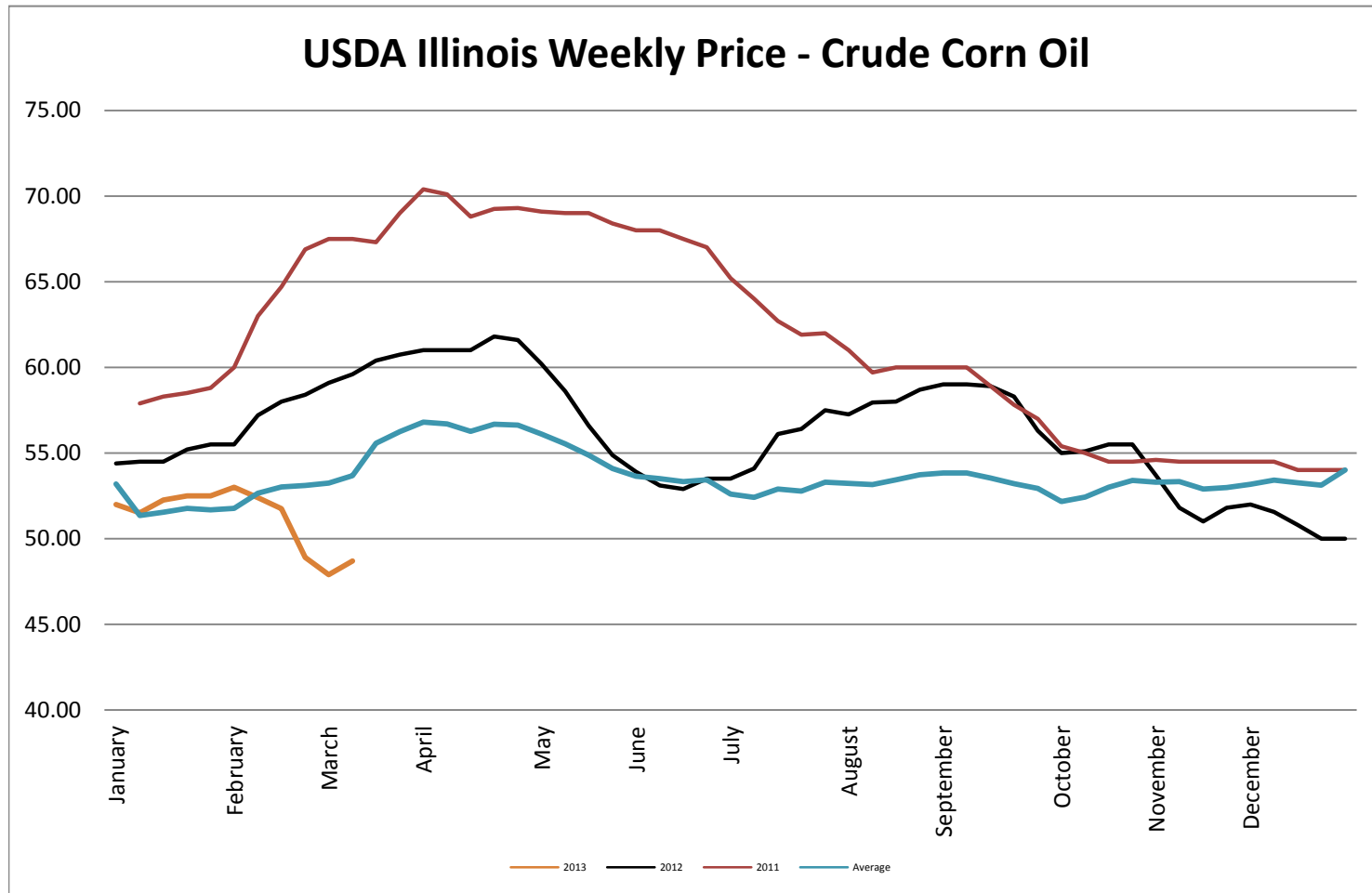


Georgia Dock Chicken - Final Weekly Price

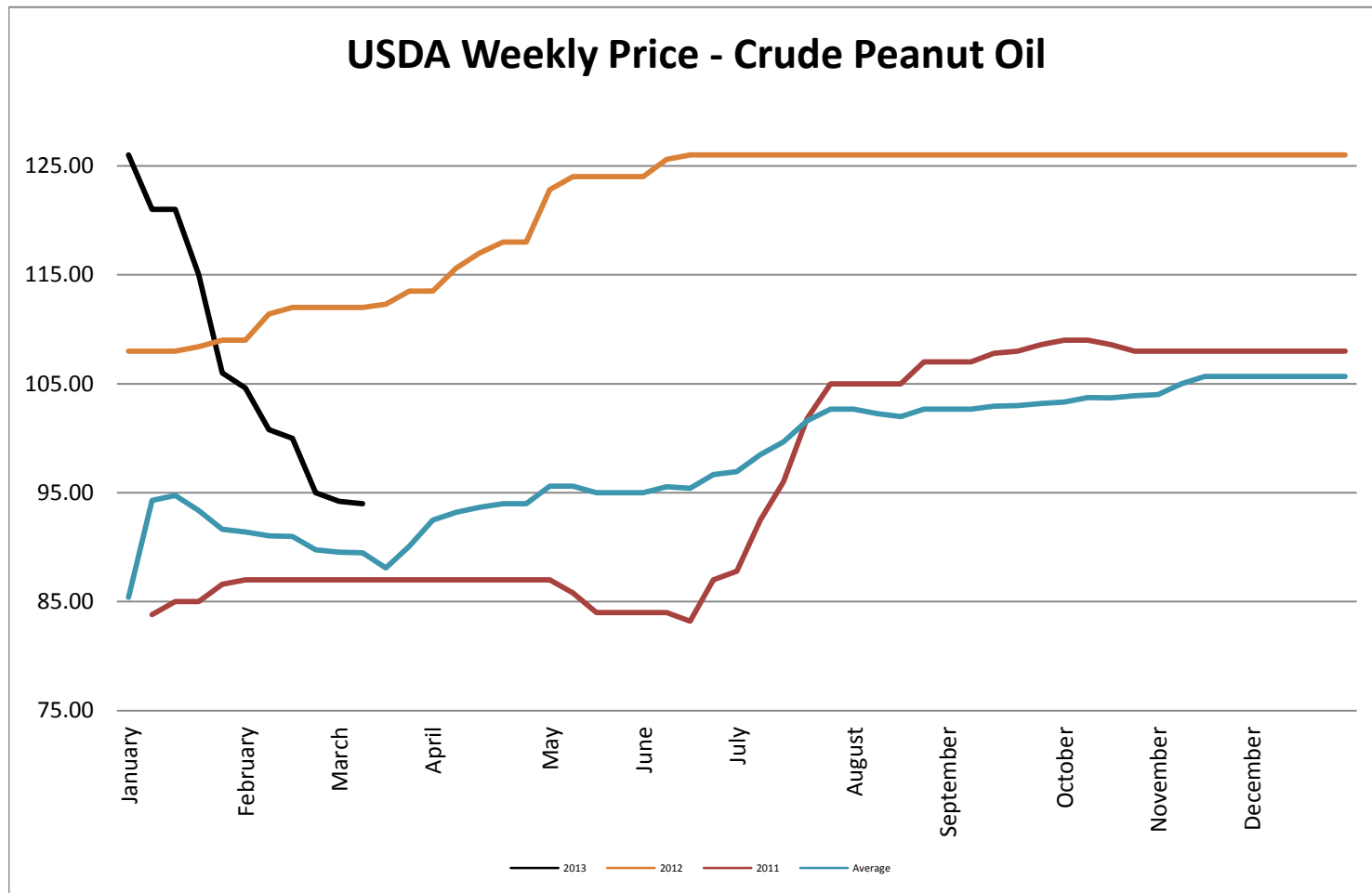
Georgia Dock Chicken Whole Bird - Final Weekly Price



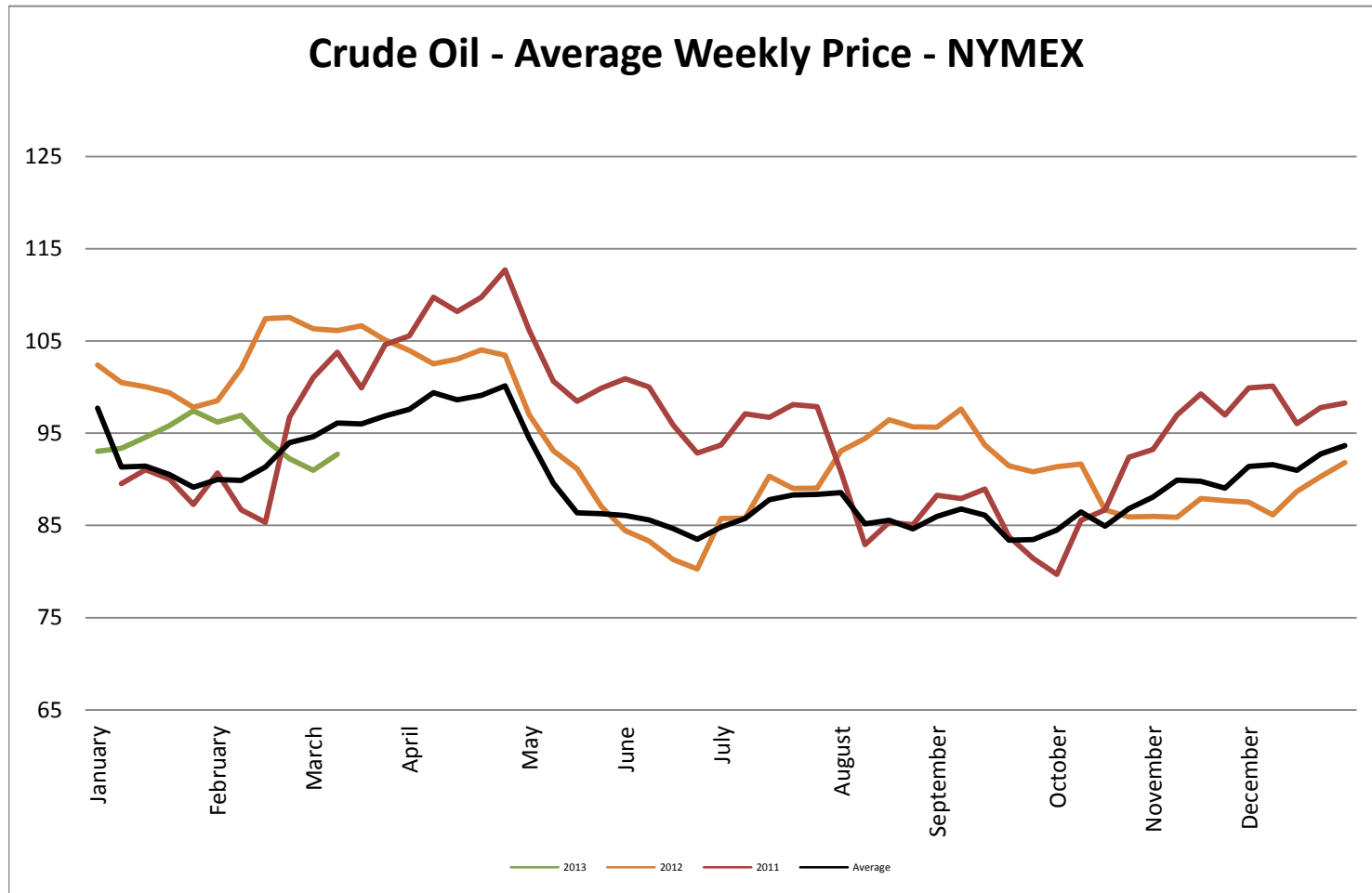
USDA Weekly Price - Crude Corn Oil



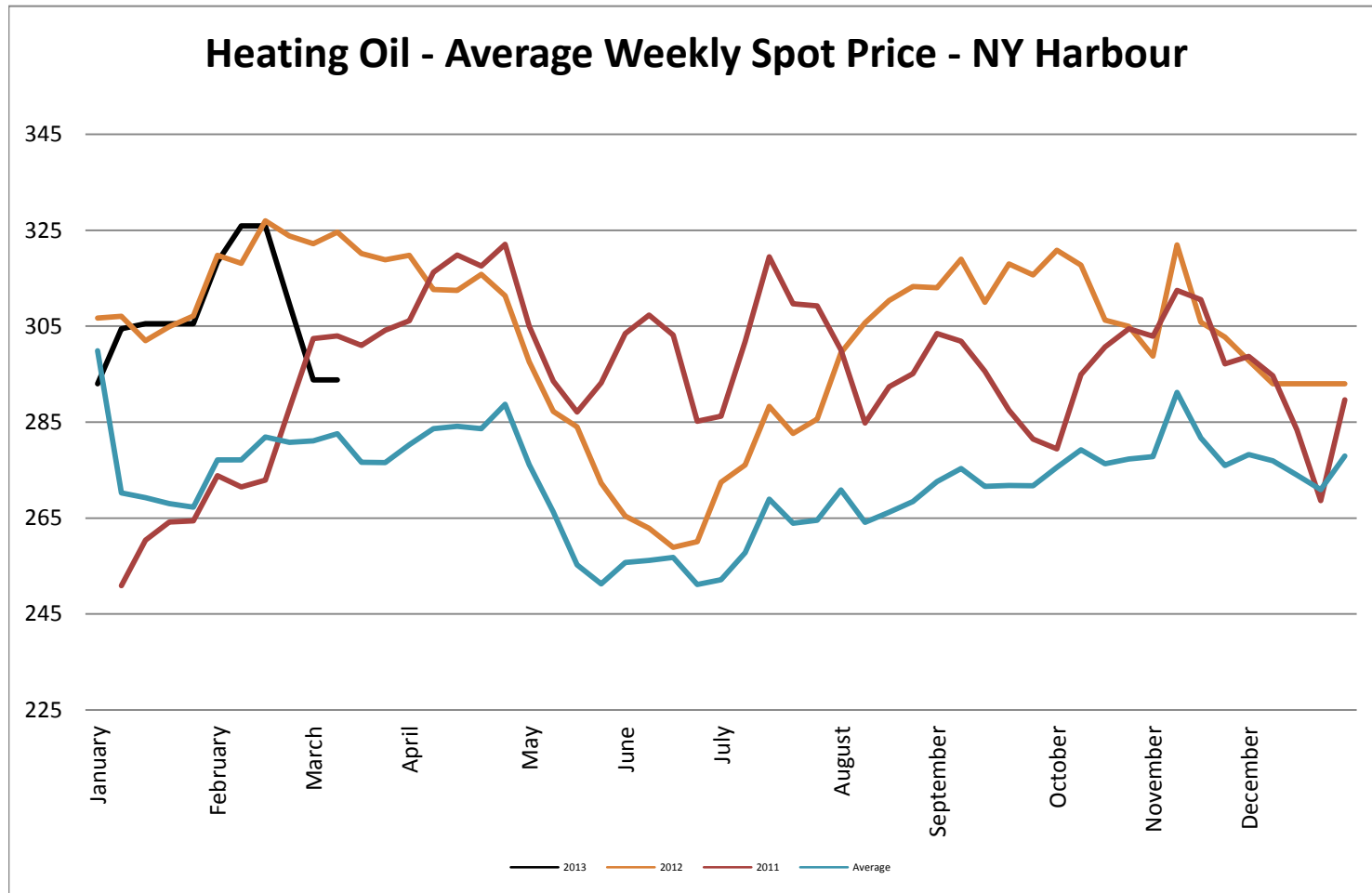
USDA Weekly Price - Crude Peanut Oil



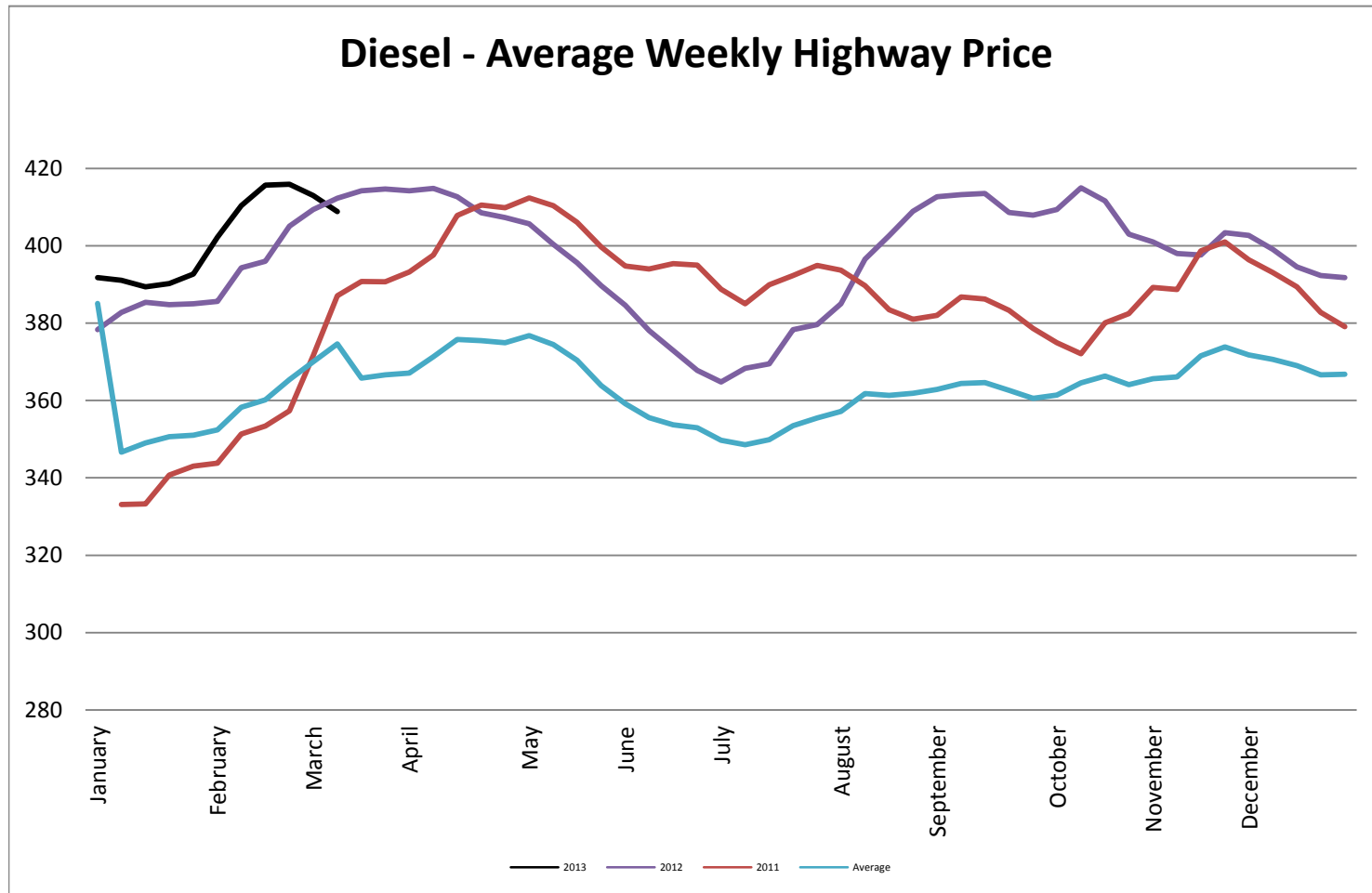
Crude Oil - Average Weekly Price - NYMEX



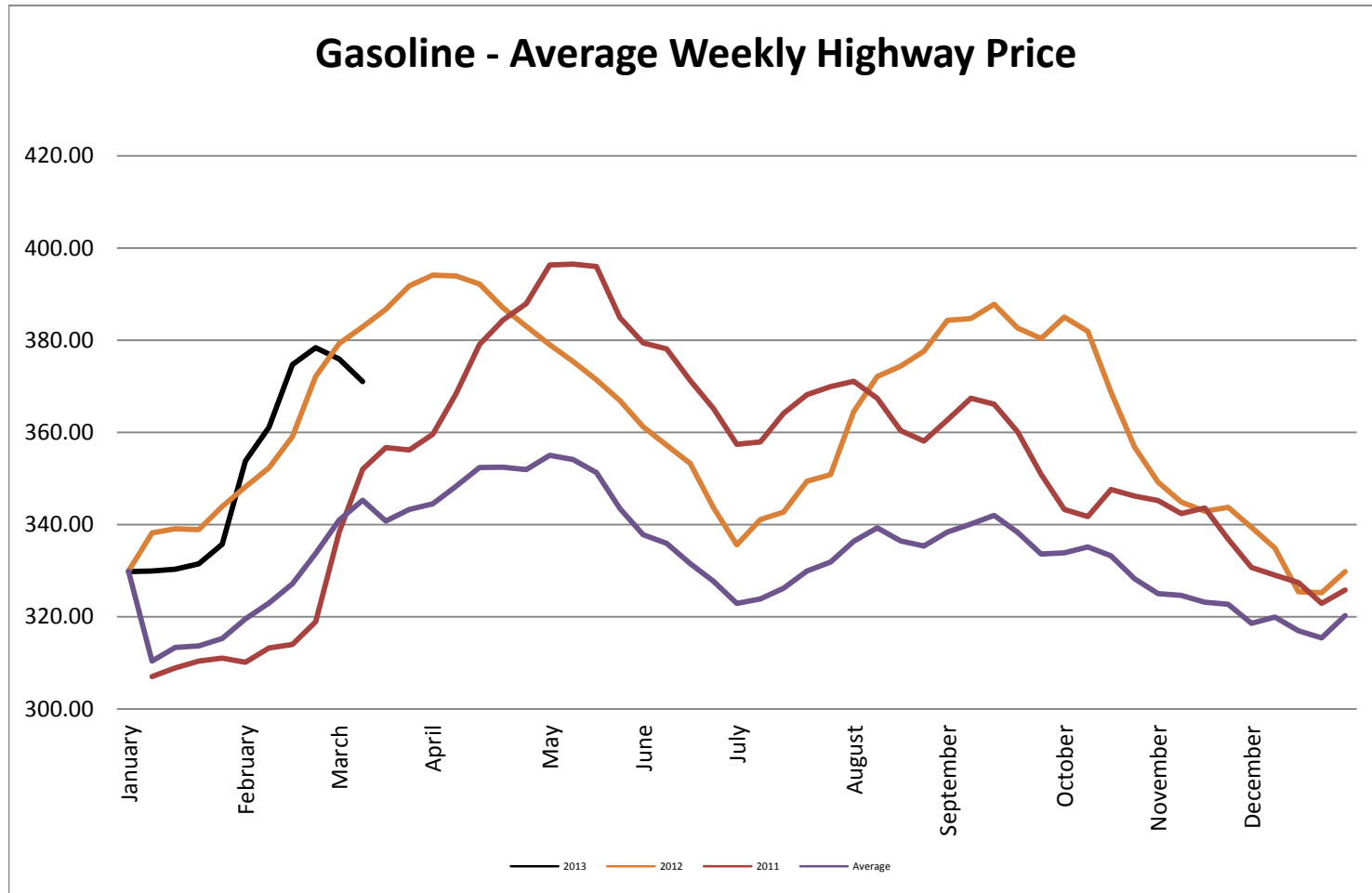
Heating Oil - Average Weekly Spot Price - NY Harbour



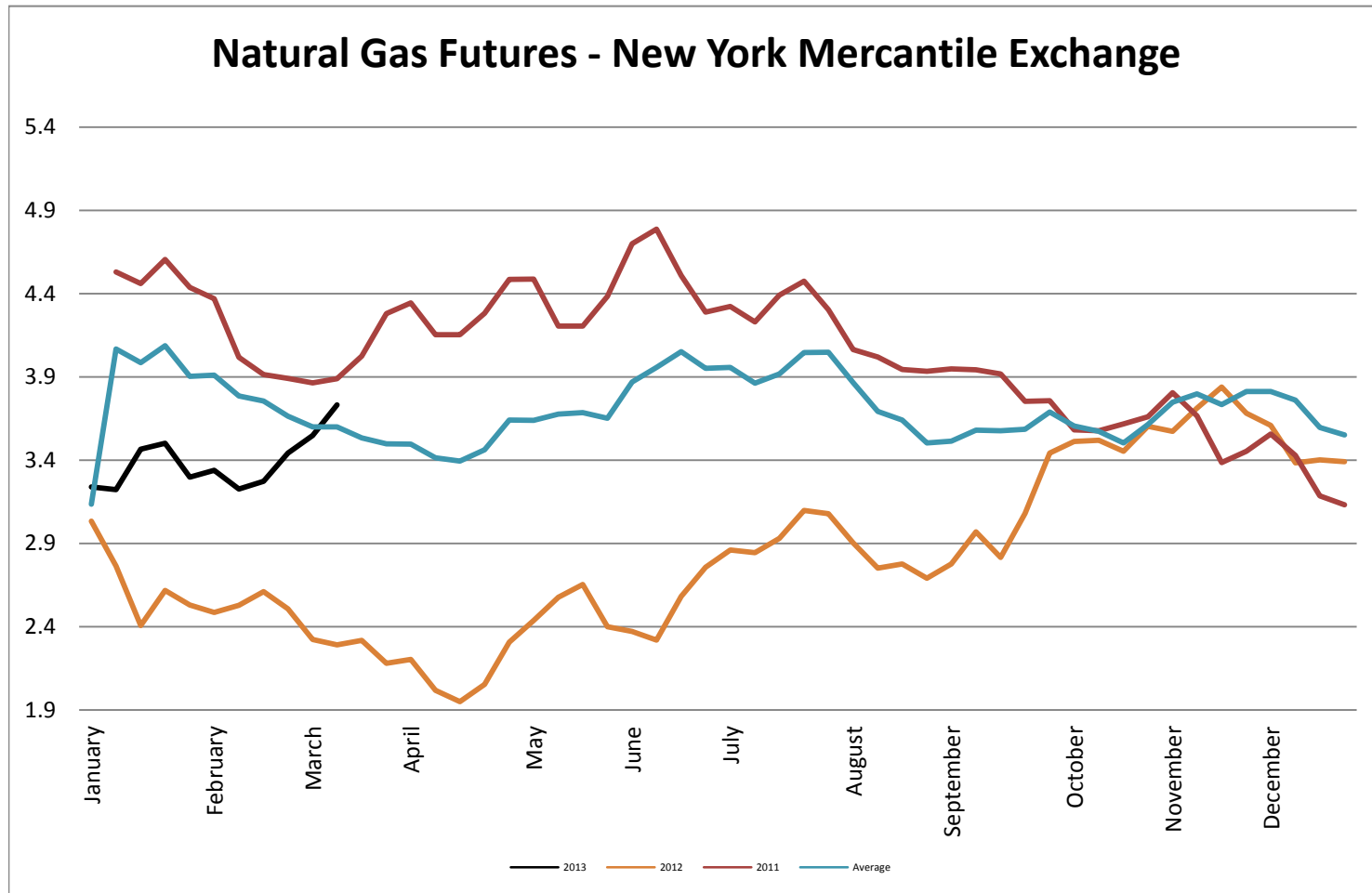
Diesel - Average Weekly Highway Price



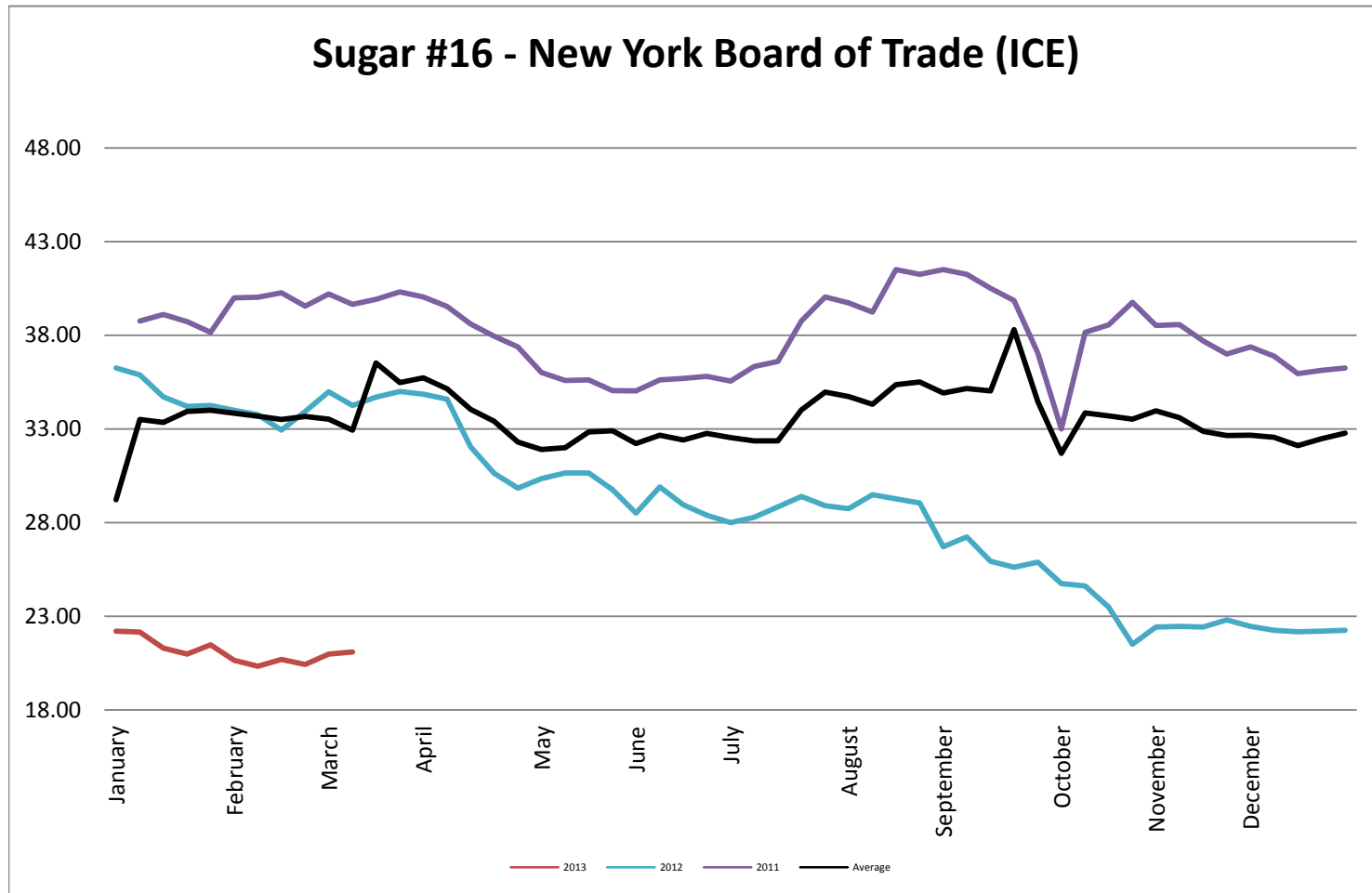
Gasoline Unleaded - Average Weekly Highway Price



Natural Gas Futures - New York Mercantile Exchange



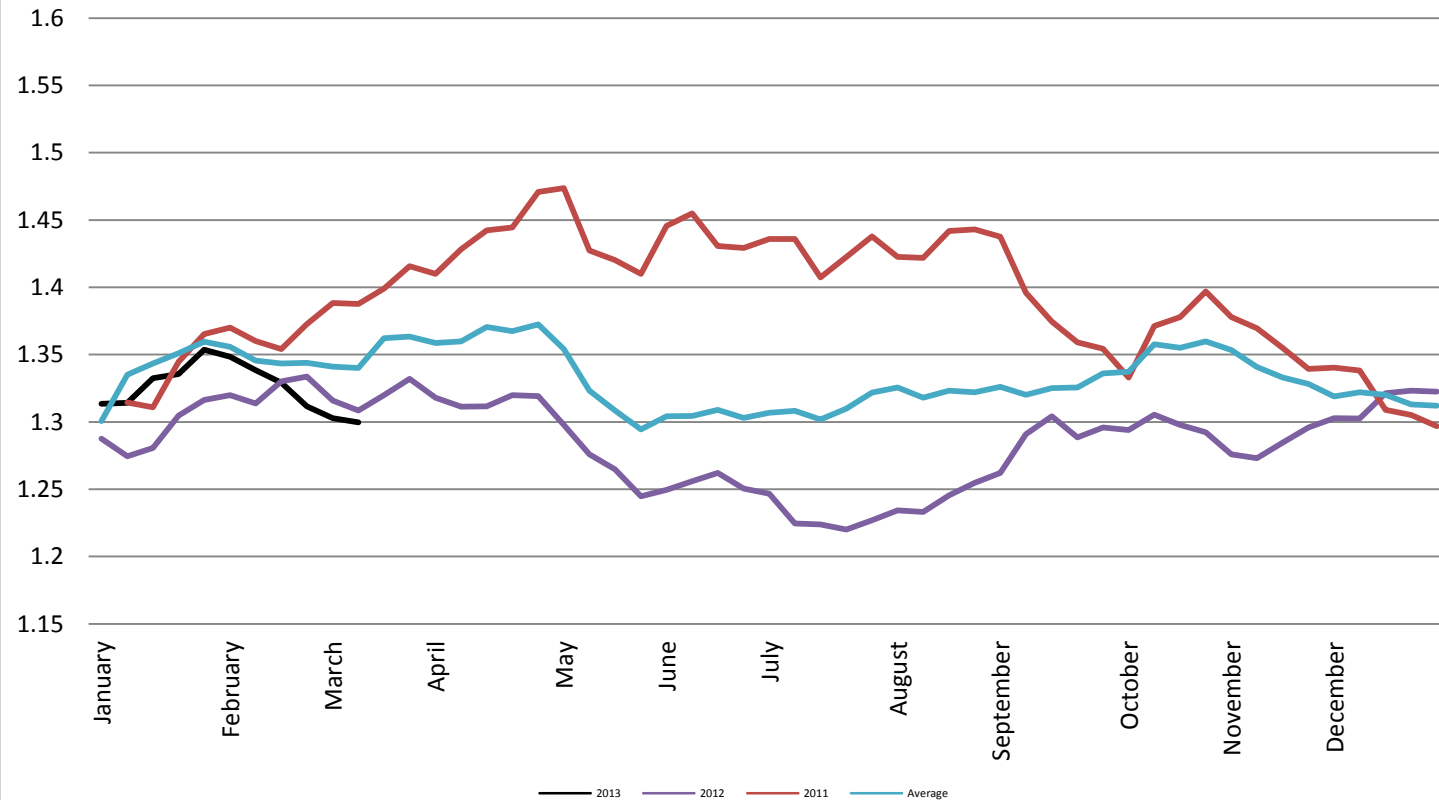
Sugar #16 - New York Board of Trade (ICE)



Foreign Exchange Rate - Euro, EMU Members

Foreign Exchange Rate - Euro, EMU Members

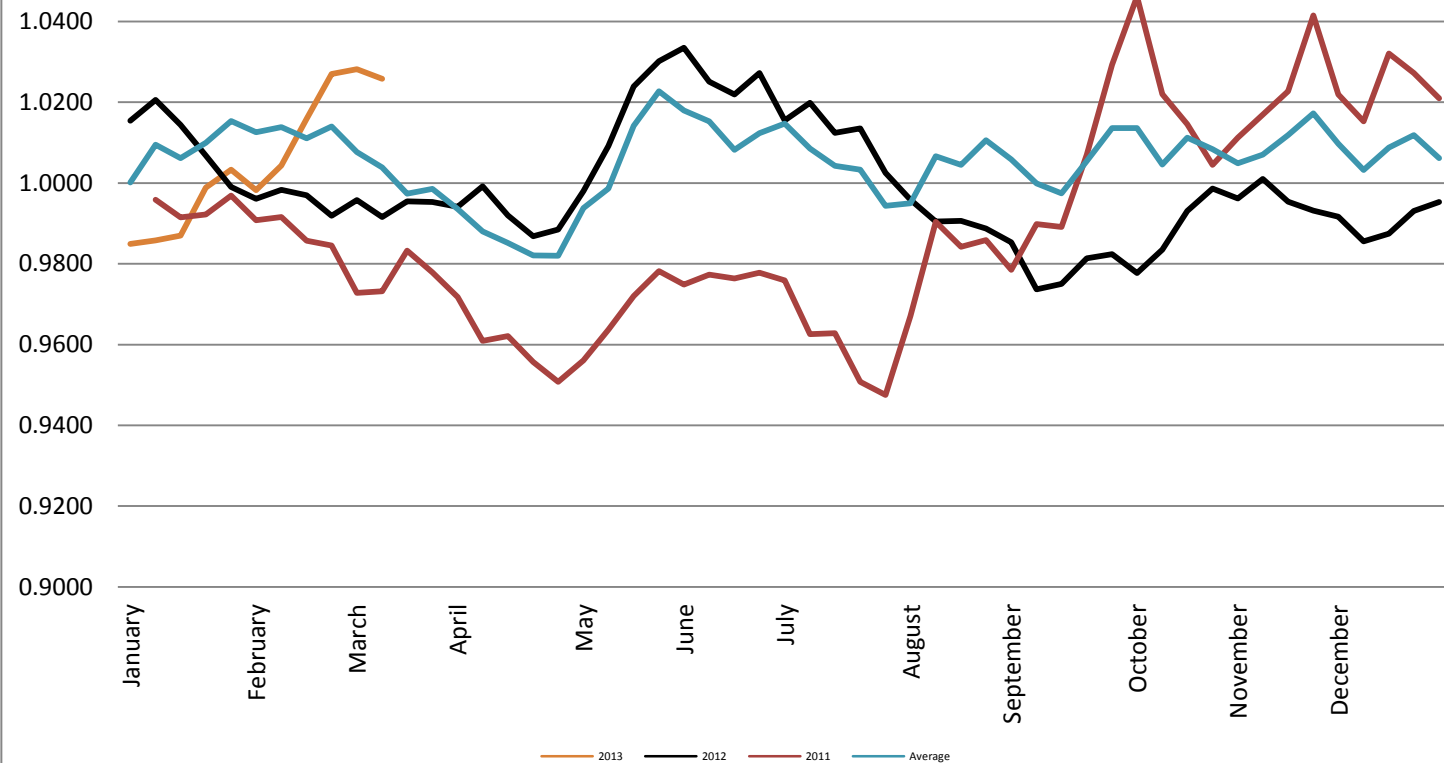
Federal Reserve Bank of New York



Foreign Exchange Rate - Canadian Dollar

Foreign Exchange Rate - Canadian Dollar

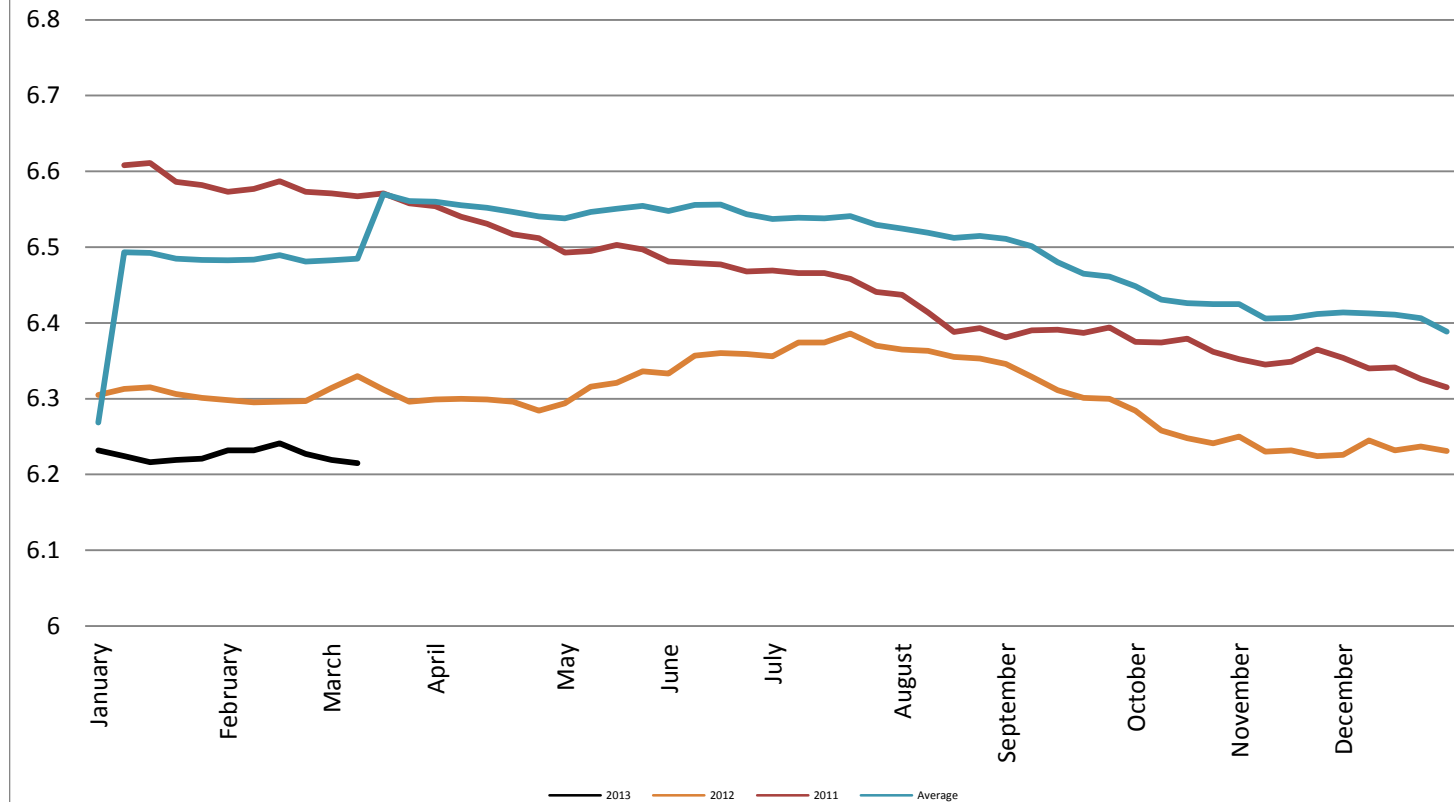
Federal Reserve Bank of New York



Foreign Exchange Rate - Chinese Yuan

Foreign Exchange Rate - Chinese Yuan

Federal Reserve Bank of New York

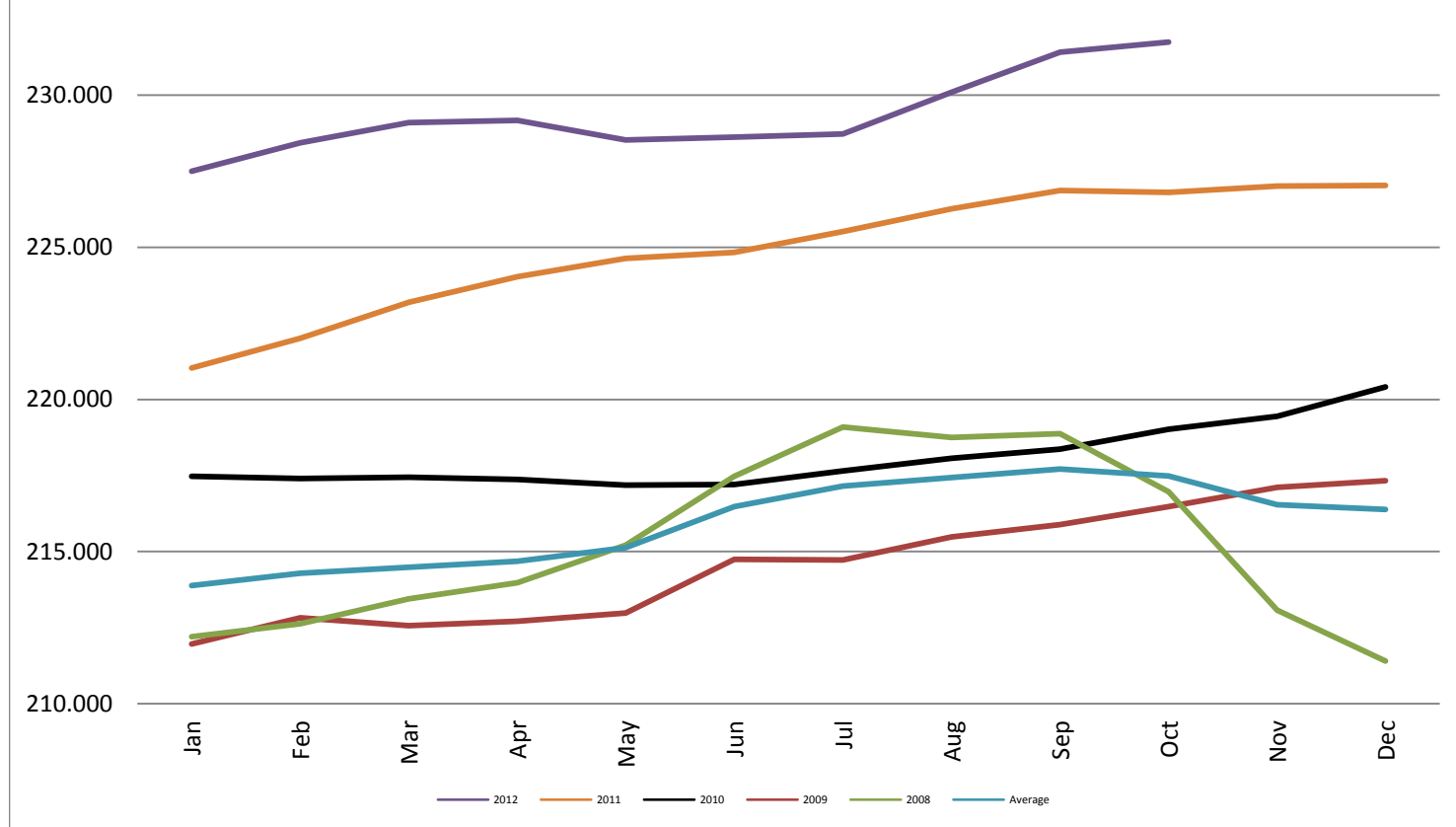


Month Number	Month		2013	2012	2011	2010	Average
		12/30/2012	0.98				
1		1/1/2013	0.985	0.9	0.85	0.8275	0.89063
1		1/7/2013	0.99	0.9025	0.85	0.8275	0.8925
1		1/14/2013	0.9925	0.905	0.85	0.83	0.89438
1		1/21/2013	0.995	0.9075	0.85	0.8325	0.89625
1	January	1/28/2013	0.9975	0.9075	0.85	0.8325	0.89688
2		2/4/2013	1	0.91	0.85	0.8325	0.89813
2		2/11/2013	1.0025	0.9125	0.8525	0.8325	0.9
2		2/18/2013	1.005	0.915	0.8525	0.8325	0.90125
2	February	2/25/2013	1.0075	0.9175	0.855	0.8325	0.90313
3		3/4/2013	1.0125	0.925	0.8575	0.8325	0.90688
3		3/11/2013	1.015	0.93	0.86	0.835	0.91
3		3/18/2013		0.9325	0.8625	0.8425	0.87917
3	March	3/25/2013		0.9325	0.8625	0.8475	0.88083
4		4/1/2013		0.9325	0.8625	0.85	0.88167
4		4/8/2013		0.9325	0.8625	0.8525	0.8825
4		4/15/2013		0.9325	0.865	0.8525	0.88333
4		4/22/2013		0.9325	0.865	0.8525	0.88333
4	April	4/29/2013		0.935	0.865	0.855	0.885
5		5/6/2013		0.94	0.865	0.86	0.88833
5		5/13/2013		0.9425	0.865	0.865	0.89083
5		5/20/2013		0.945	0.865	0.8675	0.8925
5	May	5/27/2013		0.945	0.8675	0.87	0.89417
6		6/3/2013		0.945	0.8675	0.8725	0.895
6		6/10/2013		0.945	0.87	0.87	0.895
6		6/17/2013		0.945	0.87	0.87	0.895
6	June	6/24/2013		0.945	0.87	0.8725	0.89583
7		7/1/2013		0.9475	0.87	0.8775	0.89833
7		7/8/2013		0.9475	0.8725	0.88	0.9
7		7/15/2013		0.9475	0.8725	0.88	0.9
7		7/22/2013		0.9475	0.875	0.8775	0.9
7	July	7/29/2013		0.9475	0.875	0.875	0.89917
8		8/5/2013		0.9475	0.8775	0.875	0.9
8		8/12/2013		0.95	0.88	0.8775	0.9025
8		8/19/2013		0.9525	0.8825	0.88	0.905
8	August	8/26/2013		0.955	0.885	0.88	0.90667
9		9/2/2013		0.955	0.8875	0.88	0.9075
9		9/9/2013		0.9575	0.89	0.88	0.90917
9		9/16/2013		0.9575	0.89	0.8775	0.90833
9		9/23/2013		0.9575	0.89	0.875	0.9075
9	September	9/30/2013		0.9575	0.89	0.8725	0.90667
10		10/7/2013		0.9575	0.89	0.87	0.90583
10		10/14/2013		0.9575	0.89	0.8675	0.905
10		10/21/2013		0.96	0.89	0.865	0.905
10	October	10/28/2013		0.9625	0.89	0.8625	0.905
11		11/4/2013		0.9625	0.89	0.86	0.90417
11		11/11/2013		0.965	0.89	0.8575	0.90417
11		11/18/2013		0.97	0.8925	0.855	0.90583
11	November	11/25/2013		0.9725	0.895	0.855	0.9075
12		12/2/2013		0.975	0.8975	0.855	0.90917
12		12/9/2013		0.975	0.8975	0.855	0.90917
12		12/16/2013		0.9775	0.8975	0.8525	0.90917
12		12/23/2013		0.98	0.9	0.8525	0.91083
12	December	12/30/2013		0.98	0.9	0.85	0.91
			1.00023	0.9441	0.87396	0.85835	0.89914

Consumer Price Index - Monthly

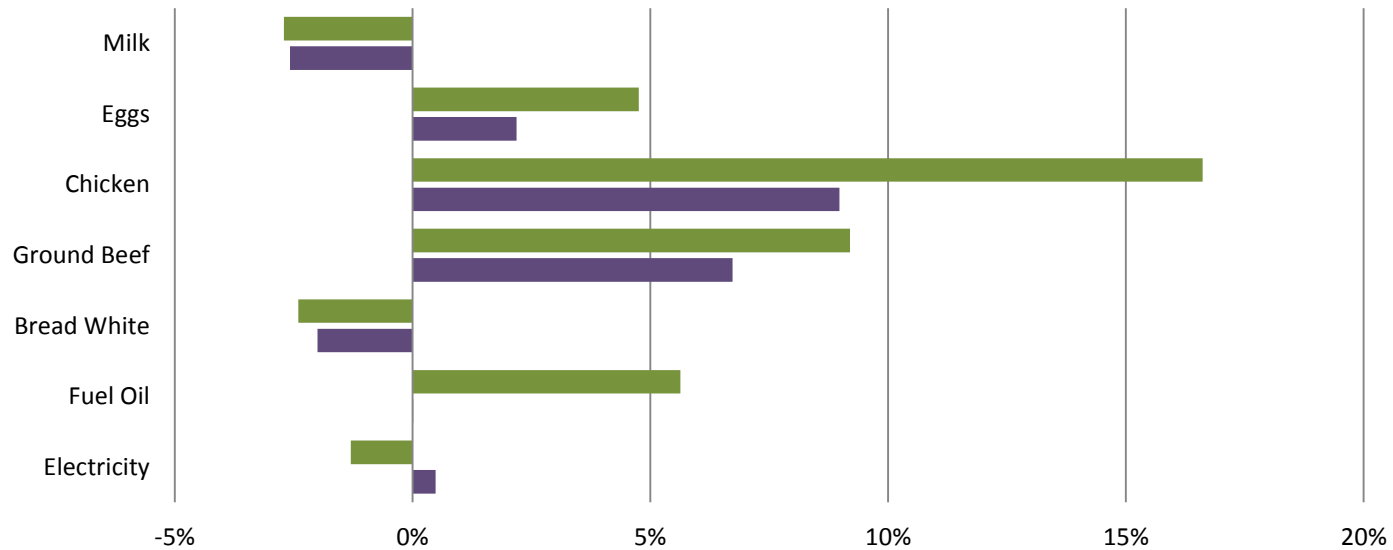
Consumer Price Index - Monthly

Bureau of Labor and Statistics



Consumer Price Index- Growth Percentage

Bureau of Labor & Standards



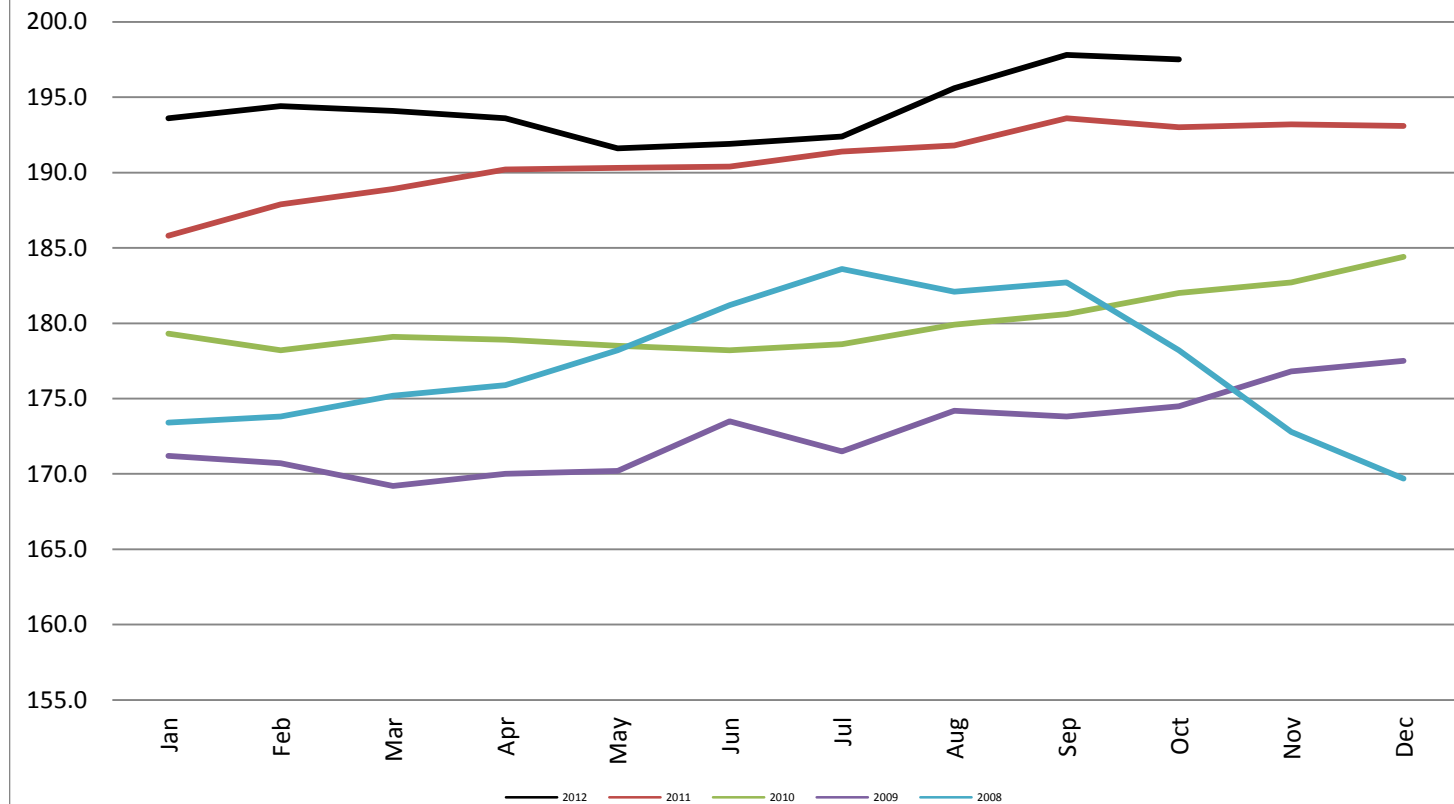
	Electricity	Fuel Oil	Bread White	Ground Beef	Chicken	Eggs	Milk
OCT 12 vs. OCT 11	-0.012987588	0.056287754	-0.024021963	0.091982598	0.166158537	0.047568145	-0.027056875
YTD	0.004839689	0.000138365	-0.019981541	0.067273583	0.089726381	0.021870585	-0.025810215

■ OCT 12 vs. OCT 11 ■ YTD

Producer Price Index - Monthly

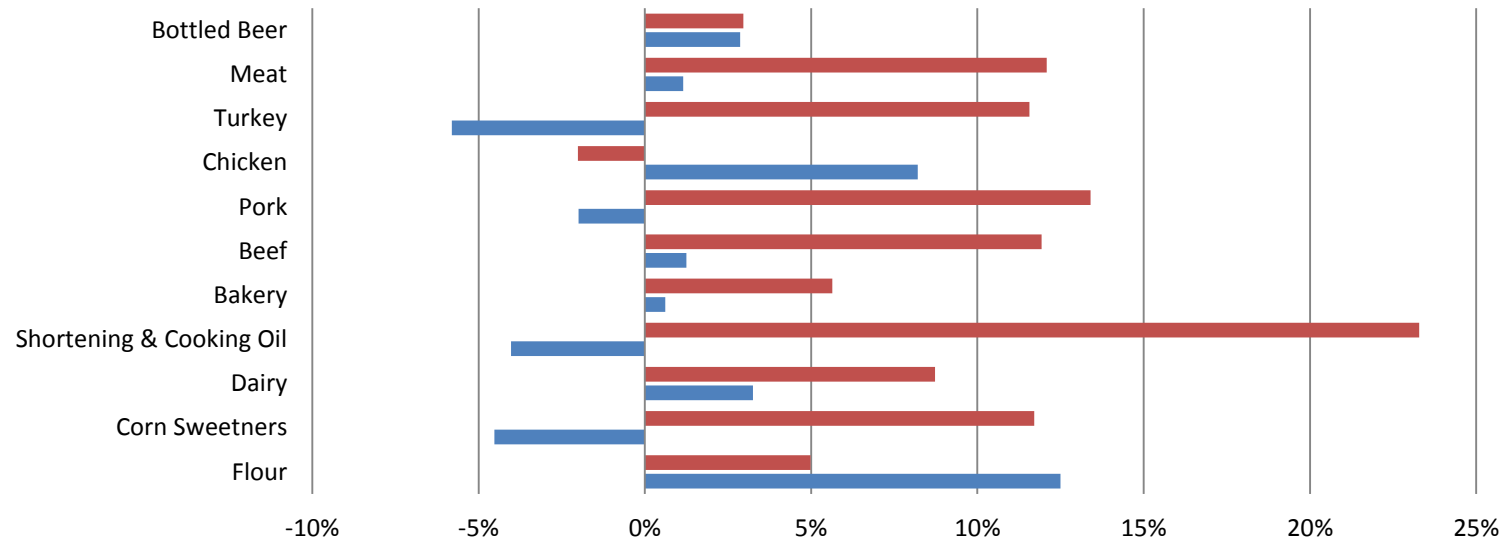
Producer Price Index - Monthly

Bureau of Labor and Statistics



PPI Commodities - Growth Percentage

Bureau of Labor & Standards



	Flour	Corn Sweetners	Dairy	Shortening & Cooking Oil	Bakery	Beef	Pork	Chicken	Turkey	Meat	Bottled Beer
■ OCT 12 VS. OCT 11	0.0498474	0.1170836	0.0872886	0.2328086	0.0563495	0.119274	0.1340136	-0.020148	0.1156905	0.1208791	0.0296156
■ YTD	0.1249411	-0.045281	0.0325203	-0.040211	0.0061657	0.0125098	-0.019938	0.0820368	-0.057999	0.0114877	0.0286935

■ OCT 12 VS. OCT 11 ■ YTD