

Key Commodity Report Weekly

February 11, 2013

Commodity Activity - Weekly Average

2/4/2013

CME Group		This Week	Last Week	YTD Avg	Last Year	vs. Last Week	vs. Last Year
Corn	↓	721.10	735.10	714.13	639.55	-1.90%	12.75%
Soybean	↑	1482.2	1464.2	1438.3	1230.6	1.23%	20.45%
Soy Meal	↑	433.98	426.26	416.83	323.12	1.81%	34.31%
Soybean Oil	↓	0.5236	0.5241	0.5123	0.5240	-0.10%	-0.08%
Rough Rice	↑	16.35	15.56	15.44	13.72	5.04%	19.18%
Wheat	↓	758.85	777.55	765.77	653.50	-2.40%	16.12%
Cheddar Barrel	↑	1.548	1.542	0.000	1.489	0.42%	3.96%
Cheddar Block	↑	1.647	1.645	1.689	1.477	0.12%	11.51%
Milk Class III	↓	17.19	17.75	0.00	16.09	-3.13%	6.84%
Butter AA	↑	1.555	1.535	0.000	1.443	1.30%	7.80%

Source: CME Group

USDA Weekly Prices

Live Cattle	↑	1.252	1.224	0.000	1.232	2.34%	1.62%
Course Ground Beef	↓	1.919	2.086	0.000	2.000	-8.00%	-4.03%
Live Hog	↑	0.5860	0.5760	0.5588	0.5950	1.74%	-1.51%
Pork Bellies	↓	1.34	1.50	1.39	0.00	-10.58%	
Chicken Whole (GA Dock)	↑	1.0000	0.9975	0.9933	0.9100	0.25%	9.89%
Crude Corn Oil	↑	53.00	52.50	52.29	55.50	0.95%	-4.50%
Crude Peanut Oil	↓	104.60	106.00	115.60	109.00	-1.32%	-4.04%

Source: USDA

NYMEX Futures & Retail

Crude Oil	↓	96.20	97.44	95.07	98.51	-1.28%	-2.35%
Heating Oil No.2 Spot	↑	318.40	305.55	305.43	319.76	4.21%	-0.43%
On Highway Diesel	↑	402.20	392.70	392.90	385.60	2.42%	4.30%
On Highway Gasoline	↑	353.80	335.70	335.17	348.20	5.39%	1.61%
Natural Gas	↑	3.338	3.298	3.344	2.485	1.21%	34.33%

Source: New York Mercantile Exchange

Federal Reserve

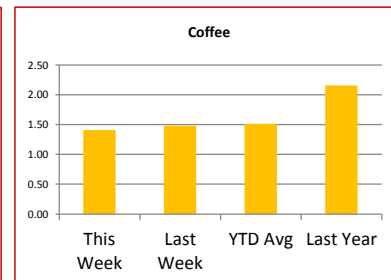
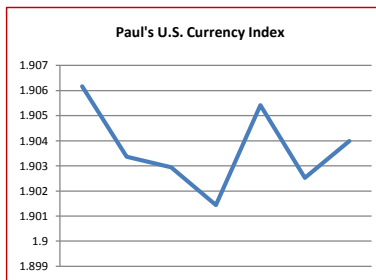
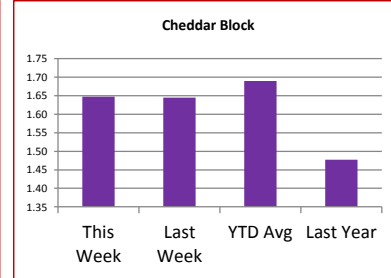
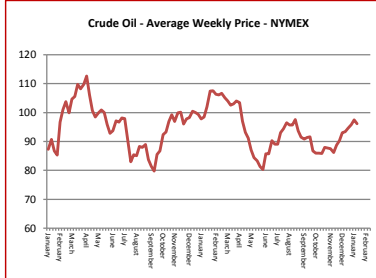
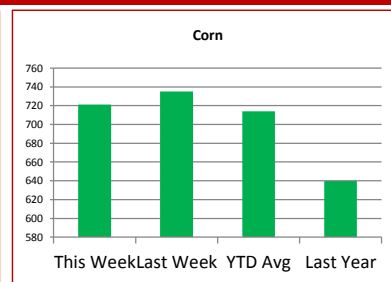
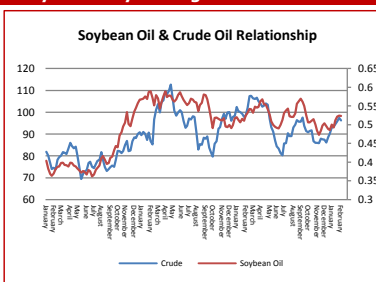
*Euro	↓	1.3485	1.3537	1.3330	1.3198	-0.38%	2.17%
*British Pound	↓	1.5723	1.5776	1.5928	1.5816	-0.34%	-0.59%
Canadian Dollar	↓	0.9982	1.0033	0.9930	0.9961	-0.51%	0.21%
Chinese Yuan	↑	6.232	6.221	6.224	6.298	0.18%	-1.05%
Swiss Frank	↓	0.912	0.916	0.921	0.916	-0.38%	-0.45%

Source: Federal Reserve Bank of New York

NYBOT Futures

Sugar 16	↓	20.65	21.48	36.41	34.00	-3.86%	-39.26%
Coffee	↓	1.4105	1.4795	1.5125	2.1530	-4.66%	-34.49%

Source: Intercontinental Exchange



Market Commentary

Commentary: There was some sell off last week of soybeans prior to the USDA report. It also has to do with weather in South America where some improvement was seen, but mostly there was an opportunity to bring home some profits. There were some good rains in Argentina, in spite of the previous week's forecast. The USDA report actually was bullish for beans, estimating 5 million bushels lower for the carryover stocks. Corn on the other hand was reported to have increased stocks, to the tune of 32 million bushels higher than last month. This was largely due to a decrease in exports. So for the USDA report, corn was bearish. In reality, corn traded both up and down for last week ending the week in negative territory. Export demand, ending stock reports, weather, all equal volatility in the market place.

Corn futures closed between \$7.09 and \$7.34-1/4 per bushel, ending the week at \$7.09.

Soybean futures closed between \$14.52-1/2 and \$14.95-1/2 per bushel, ending the week at \$14.52-1/2.

Soybean meal futures closed between \$422.40 and \$438.50 per short ton, ending the week at \$422.40.

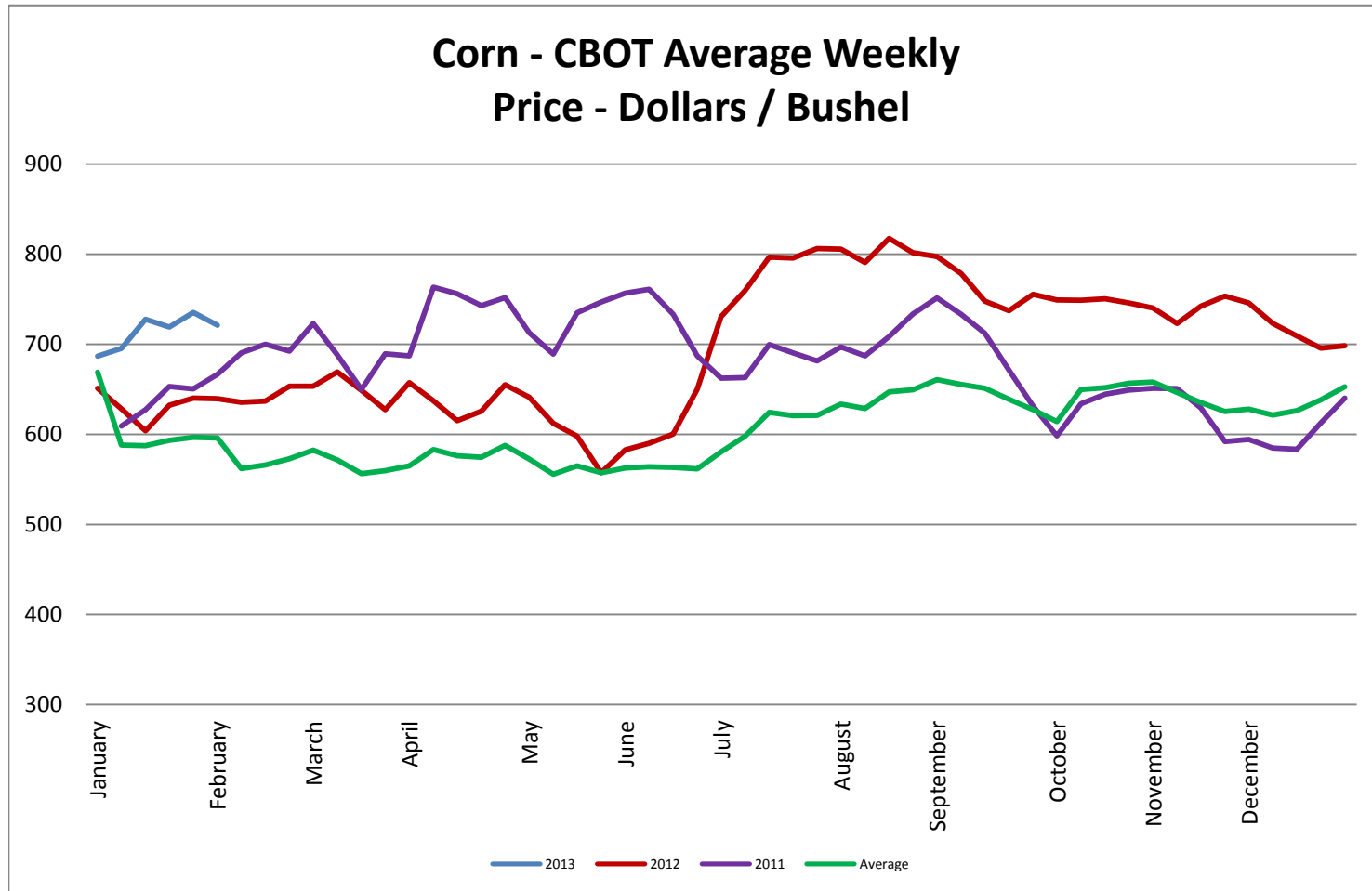
Soybean oil futures closed between \$0.5143 and \$0.5311 per pound, ending the week at \$0.5143.

Wheat futures closed between \$7.56 and \$7.63 per bushel, ending the week at \$7.56-1/4.

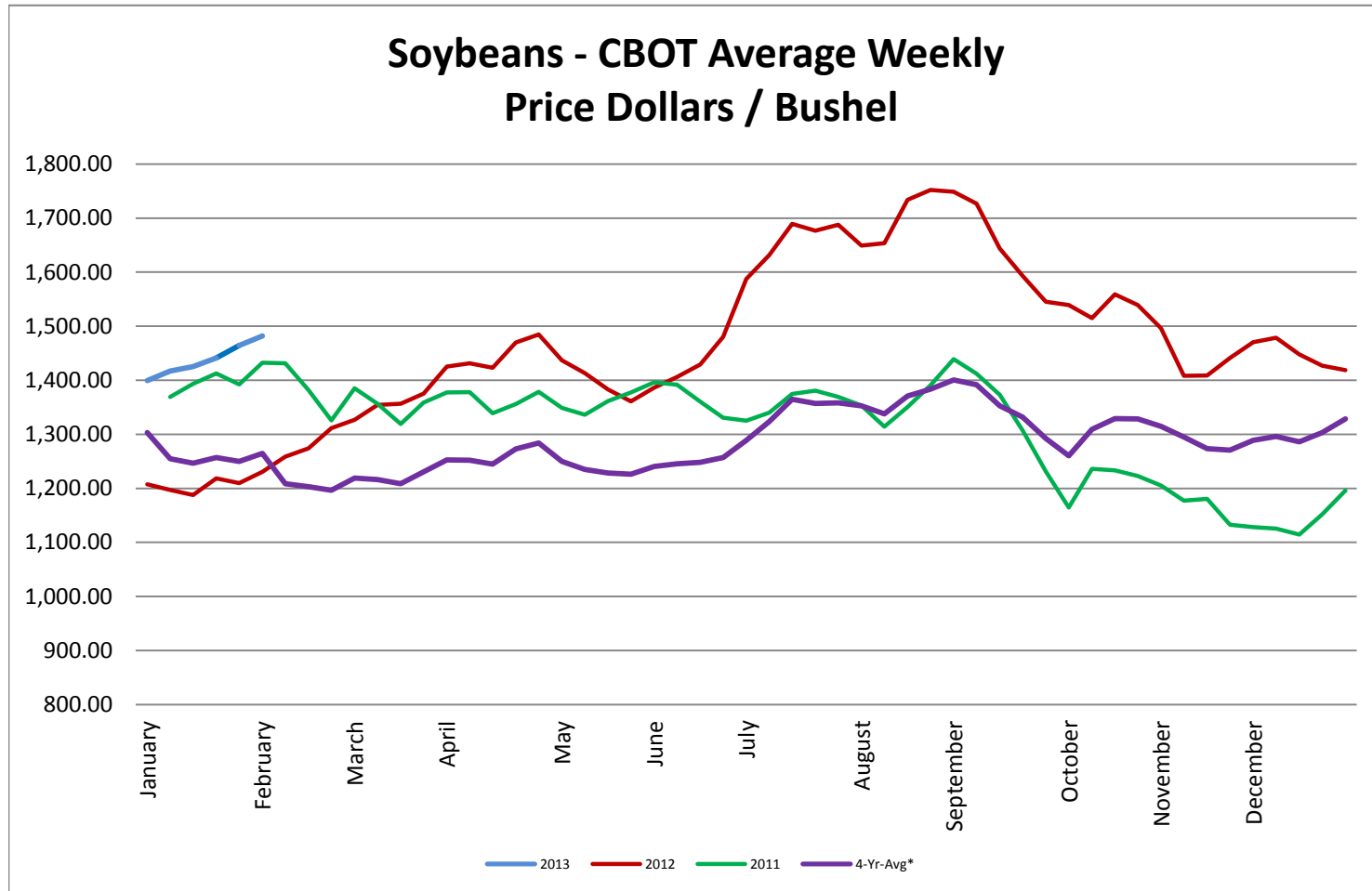
* Used as the indexing unit of measure for this exchange rate

Commodity Information: Commodity information found in this sheet is publically available. It can be found from numerous sources, all of which are noted. This report is for informational purposes only. Please do not make hedging or buying decisions based on this report. Please note that rounding can affect the percent of change values.* Paul's Currency Index compares the U.S. Dollar to five other currencies, Euro, British Pound, Swiss Frank, Canadian Dollar, and Chinese Yuan.

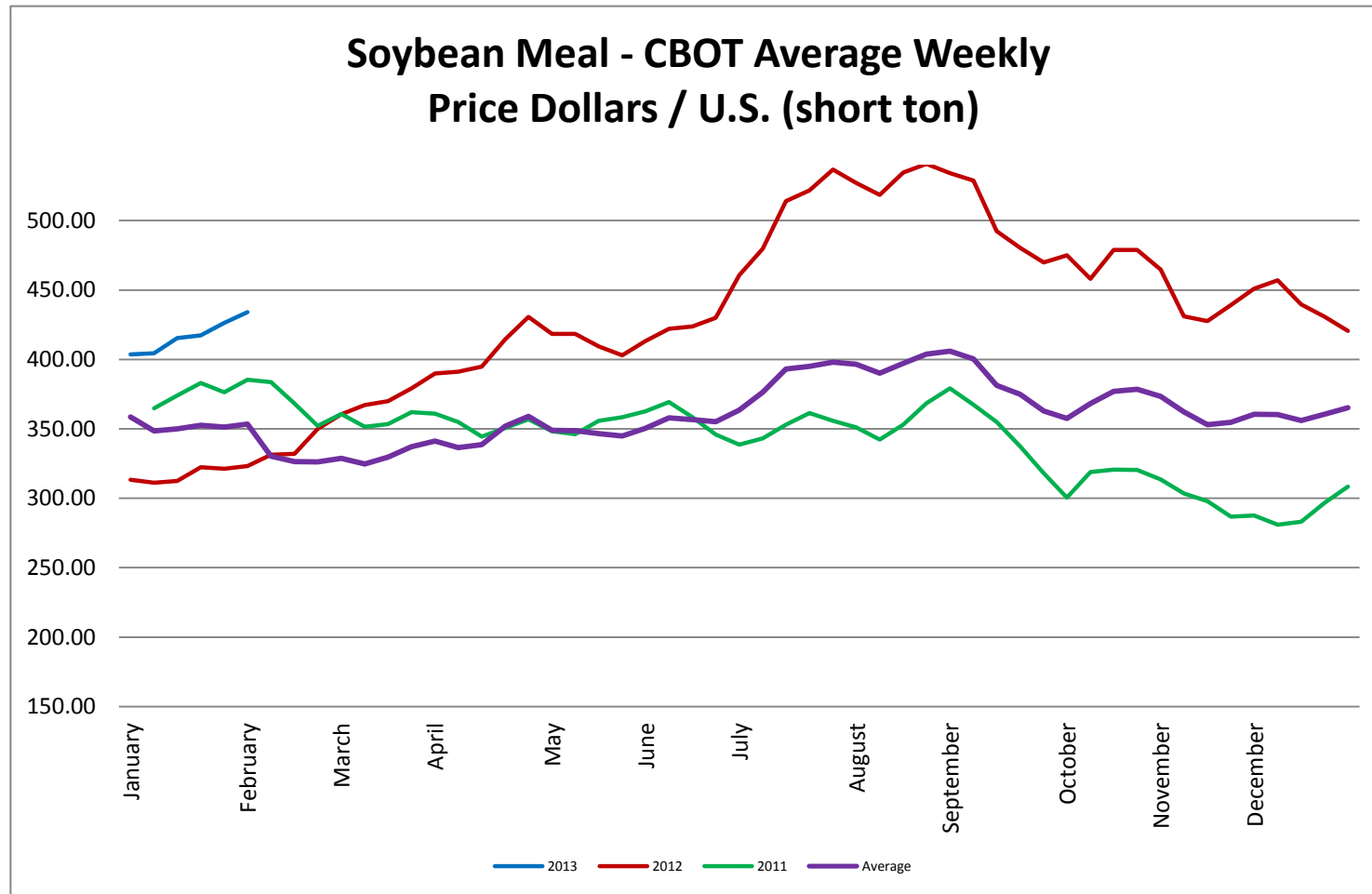
Corn - CBOT Weekly Futures Price



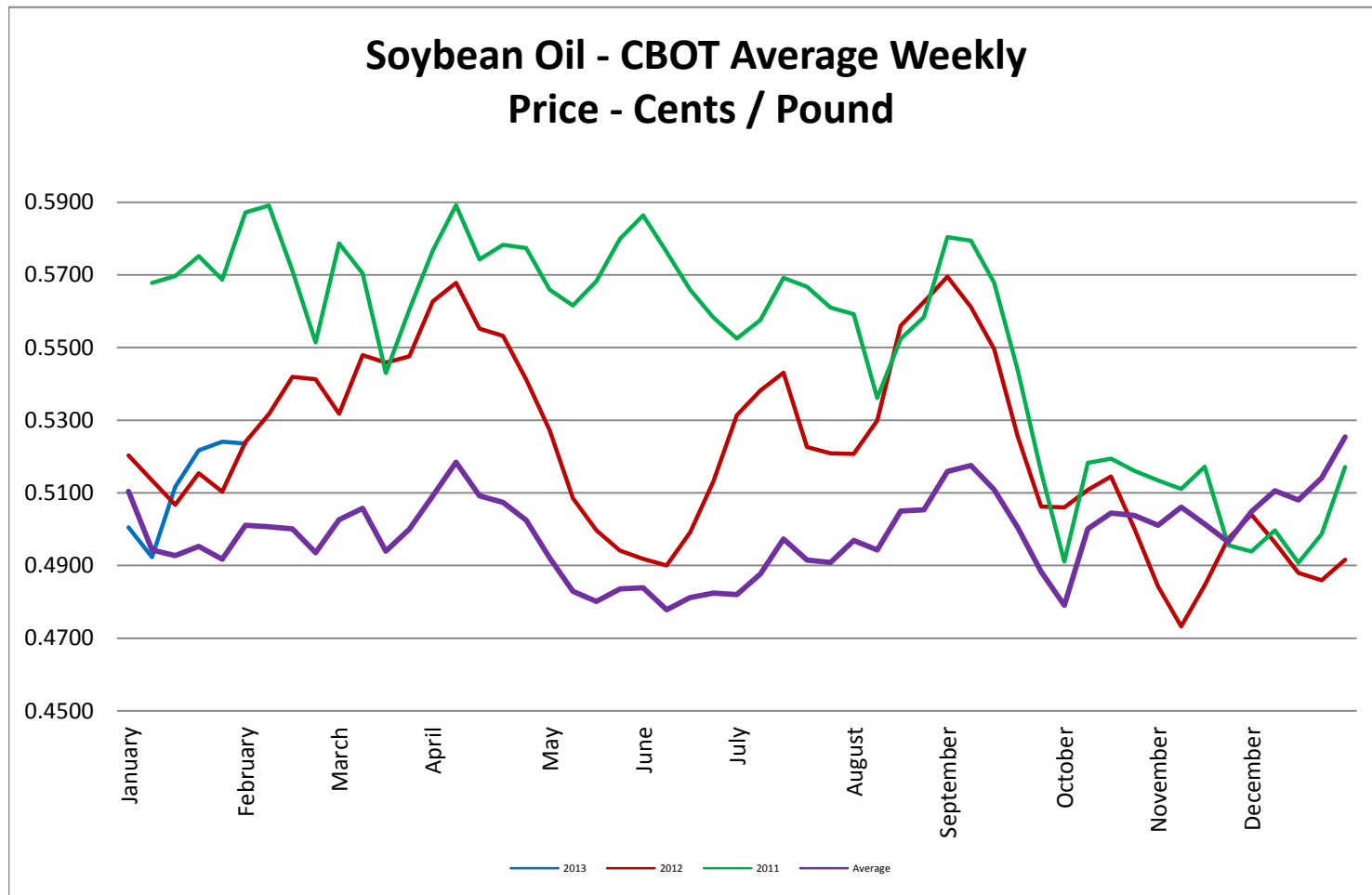
Soybeans - CBOT Weekly Average Price - Dollars / Bushel



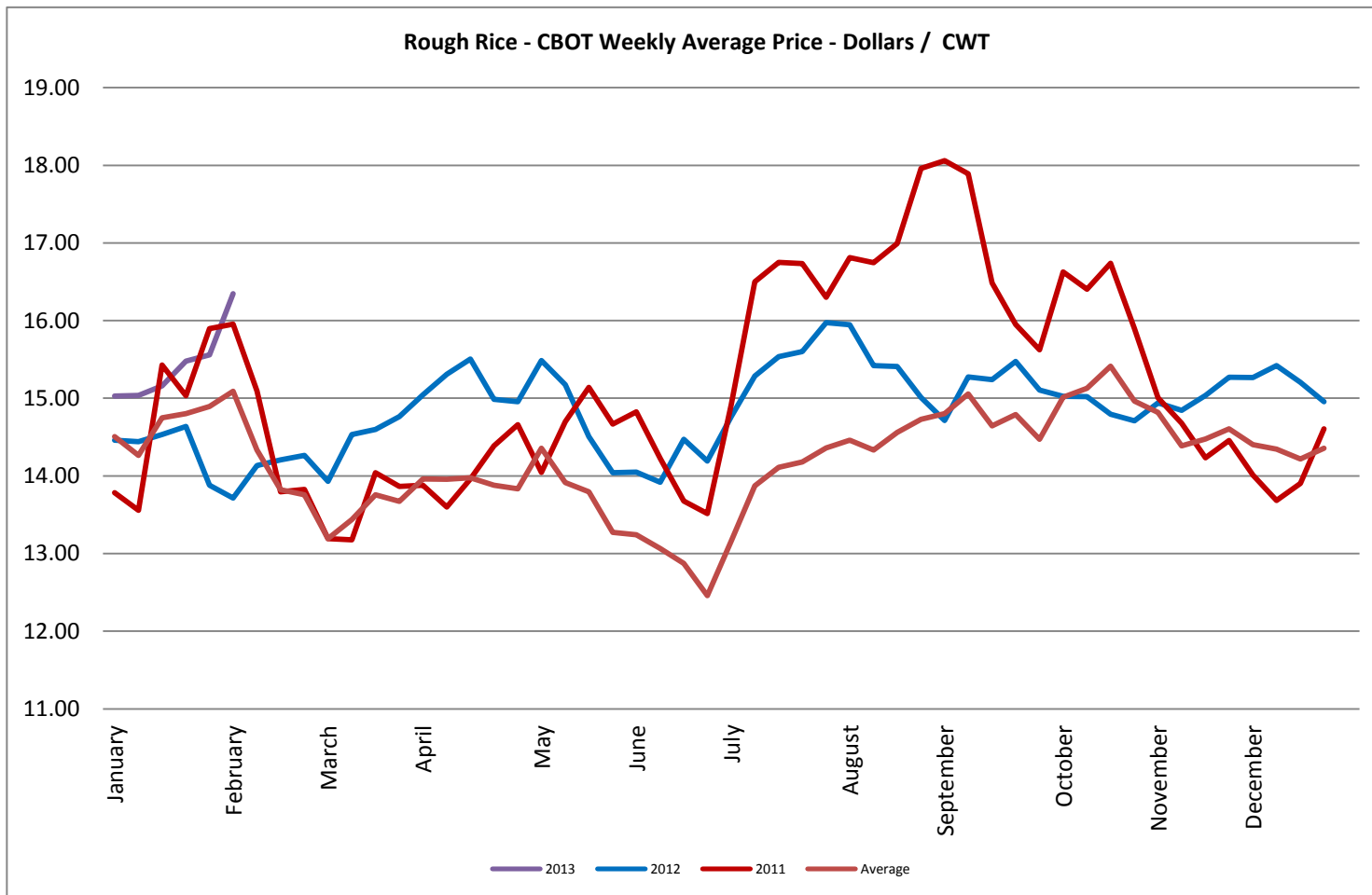
Soybean Meal - CBOT Weekly Average Price - Dollars / US Ton



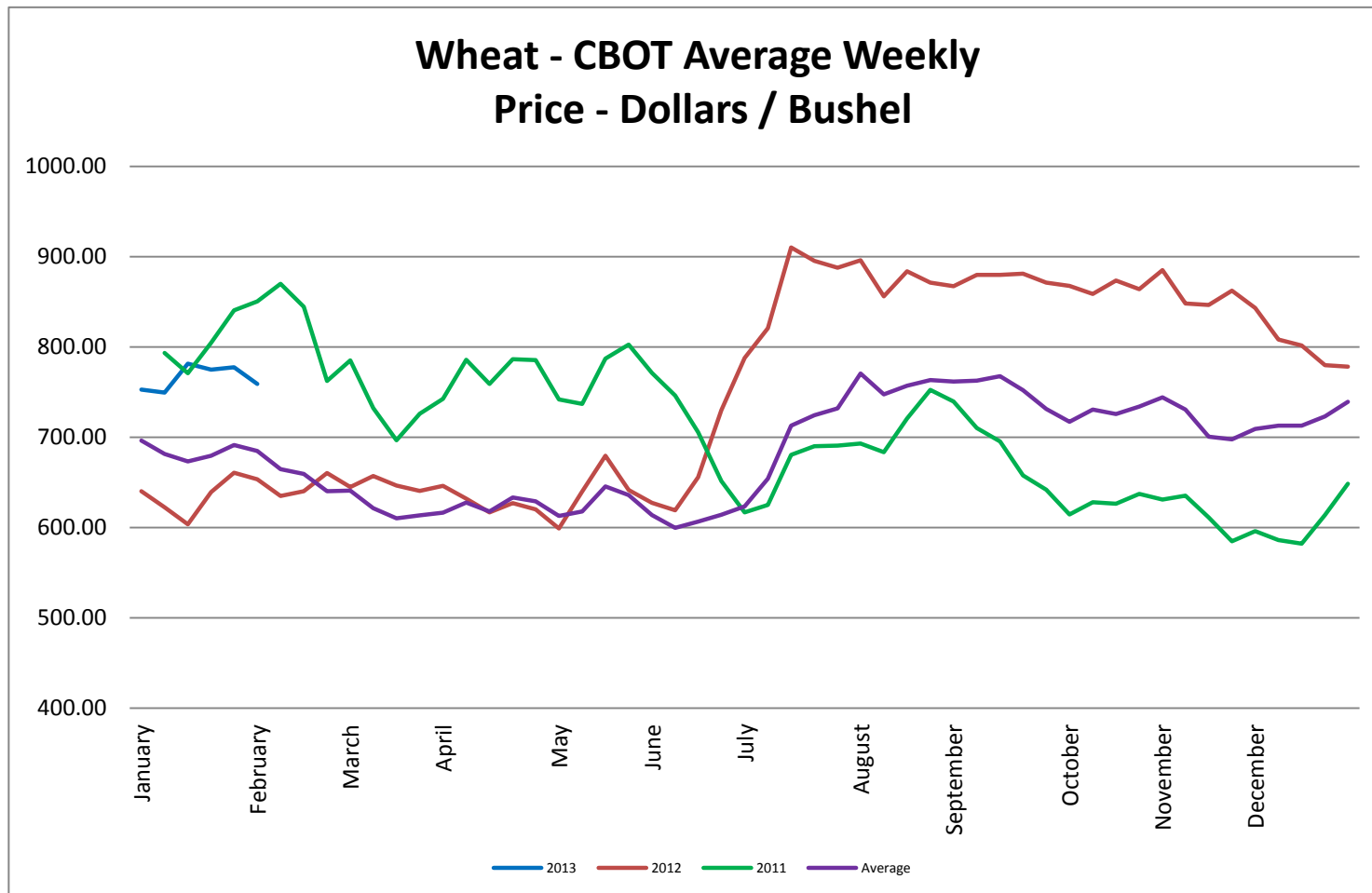
Soybean Oil - CBOT Weekly Average Price - Cents / Pound



Rough Rice - CBOT Weekly Average Price - Dollars / CWT

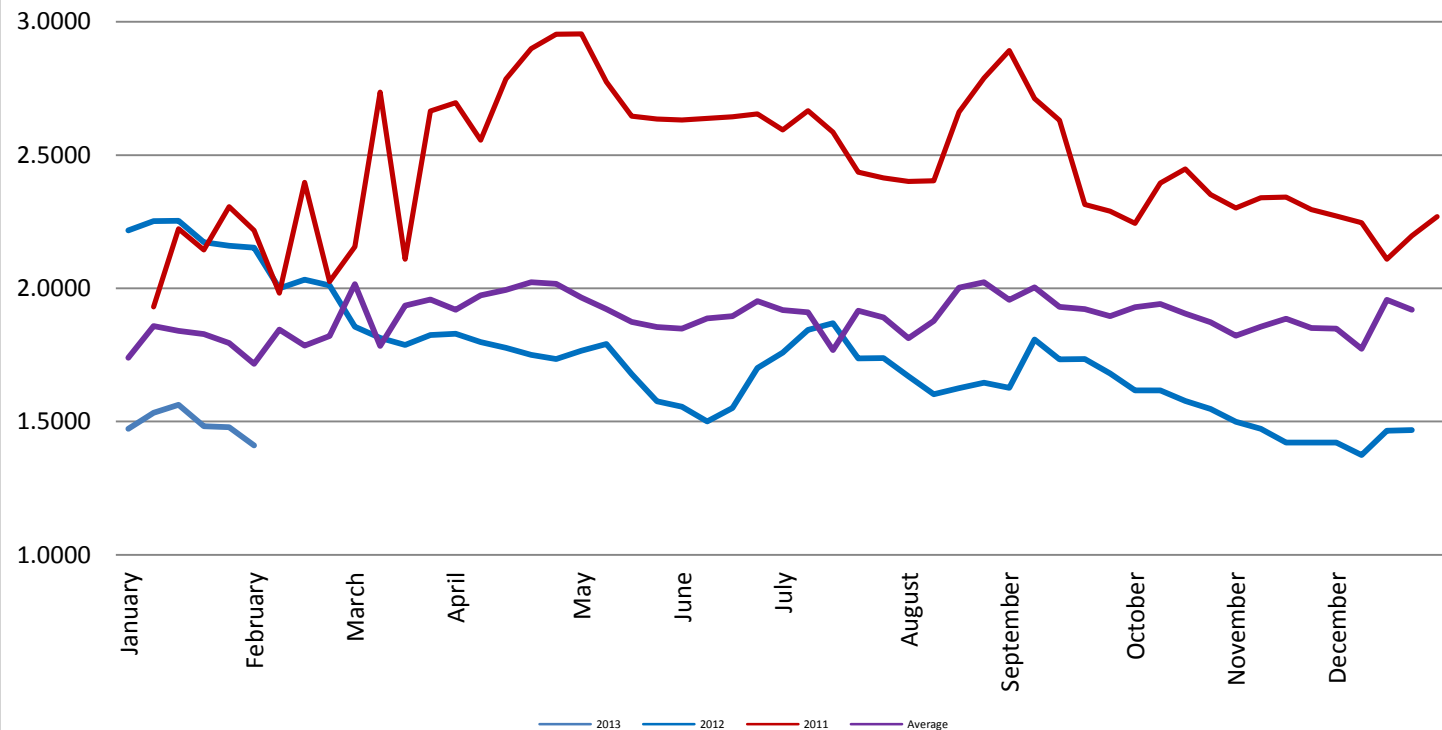


Wheat - CBOT Weekly Average Price - Dollars / Bushel

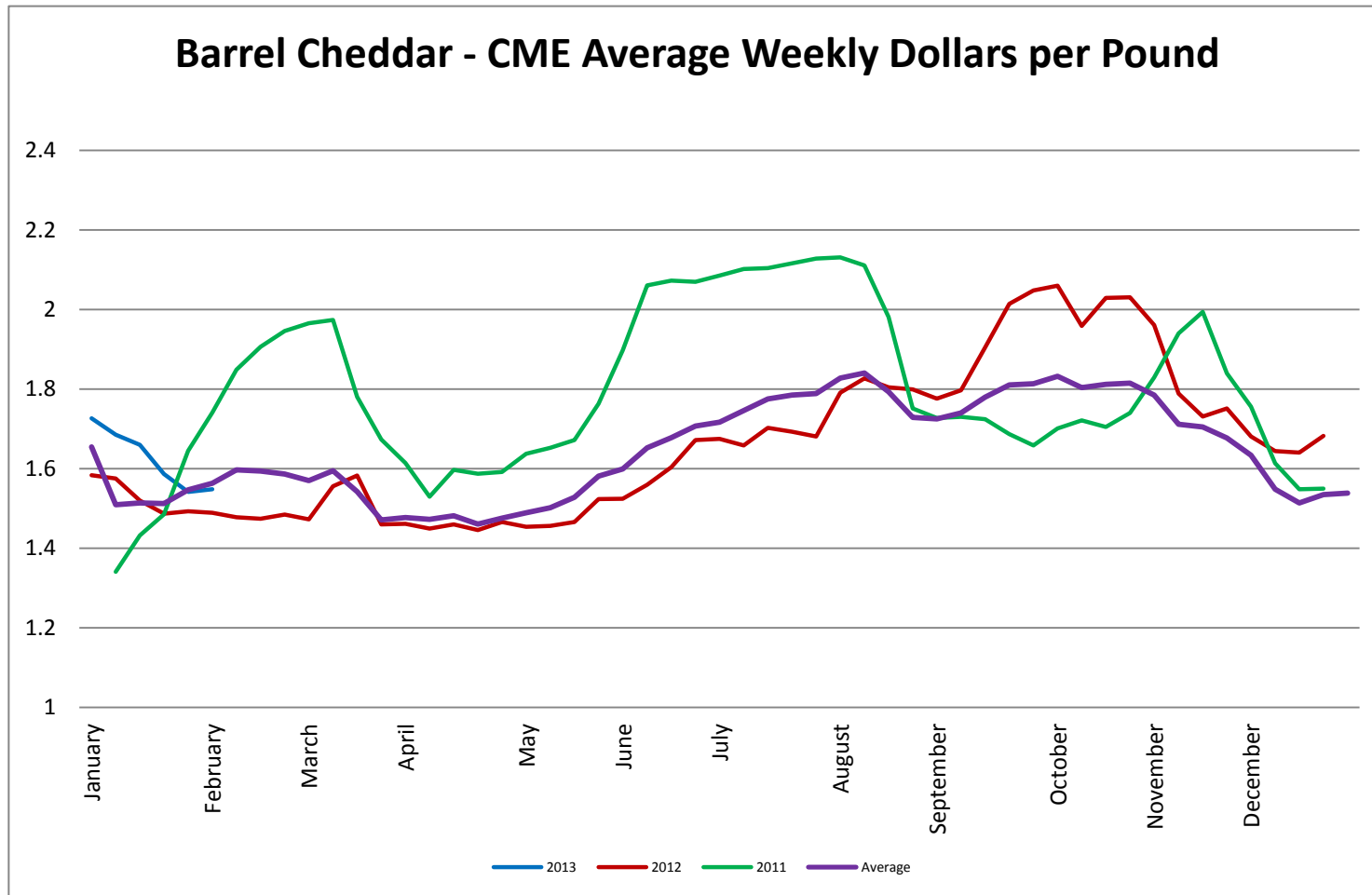


Coffee - (KC) NYBOT Average Weekly Price - Dollars per Pound

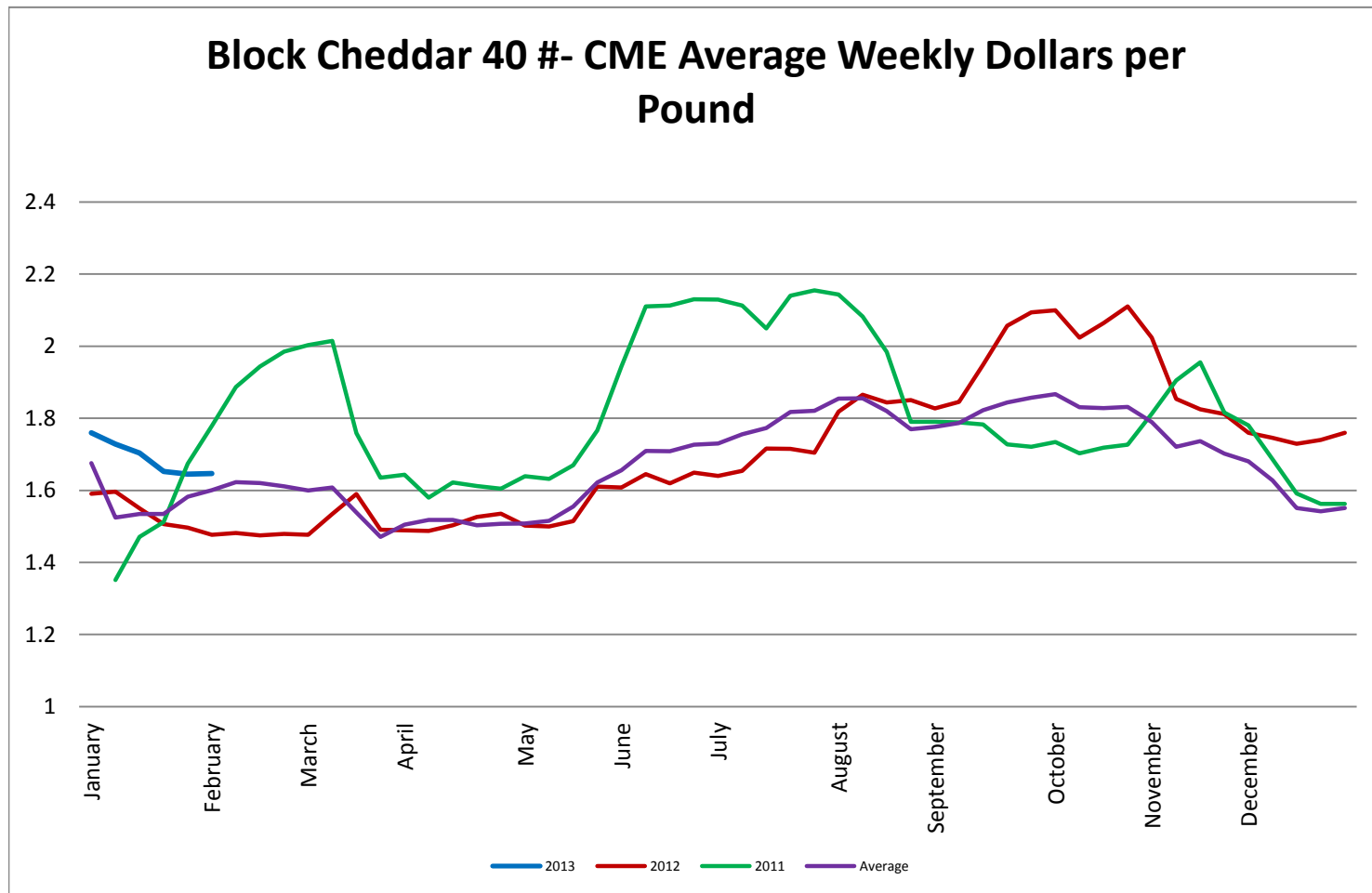
Coffee - (KC) NYBOT Average Weekly Price
Dollars / Pound



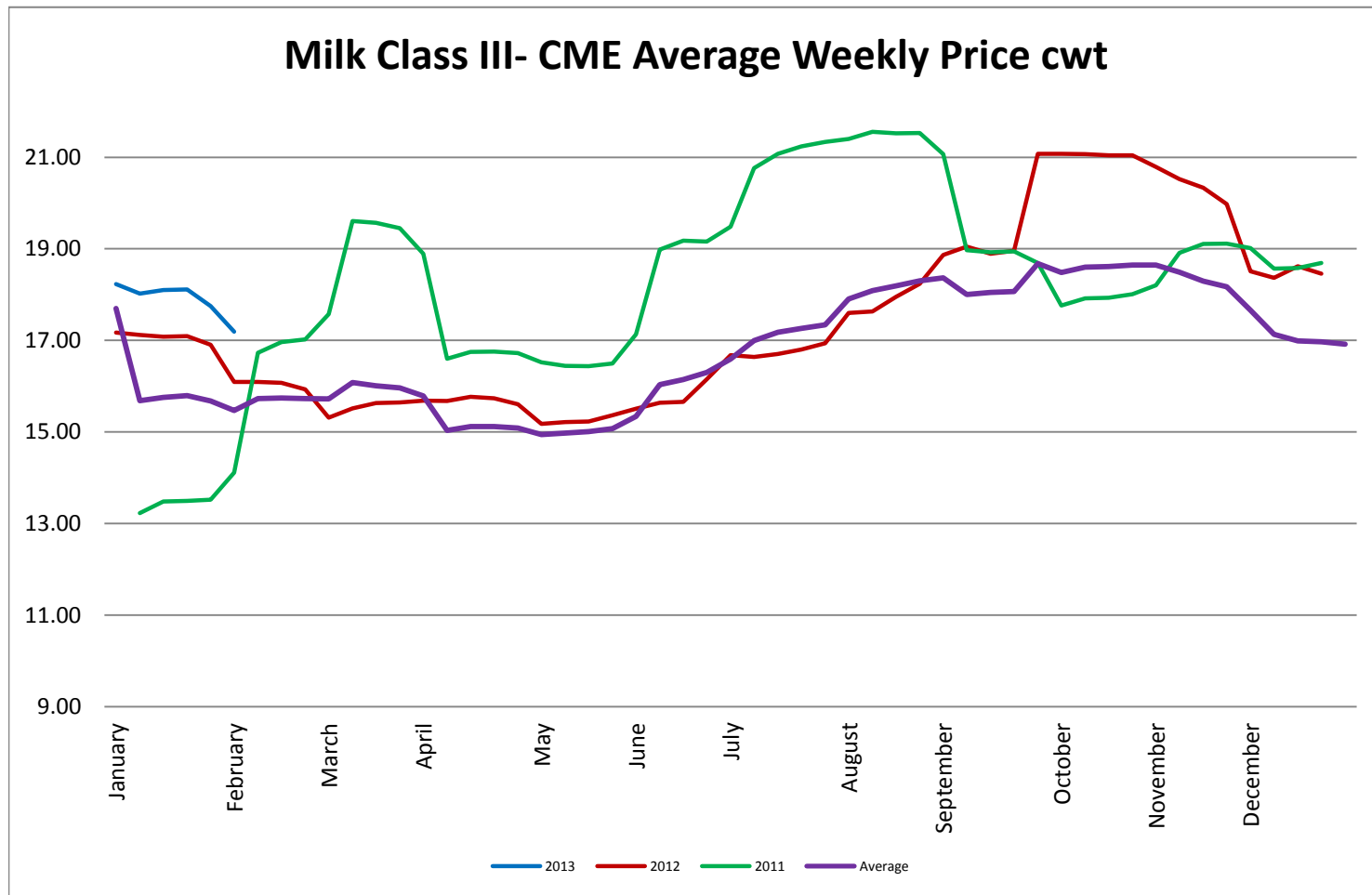
Barrel Cheddar - CME Average Weekly Price / Pound



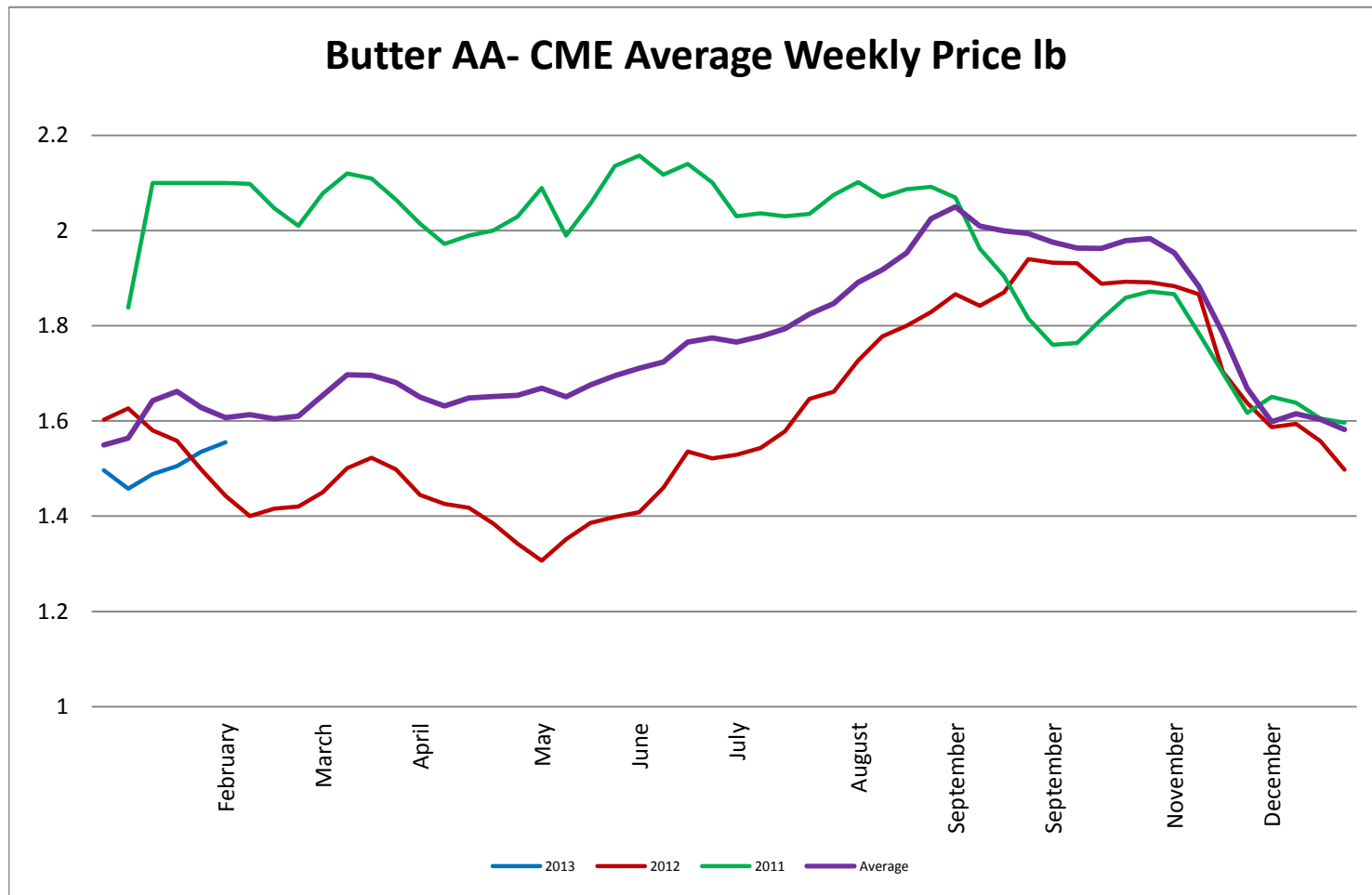
40 LB Block Cheddar - CME Average Weekly Price / Pound



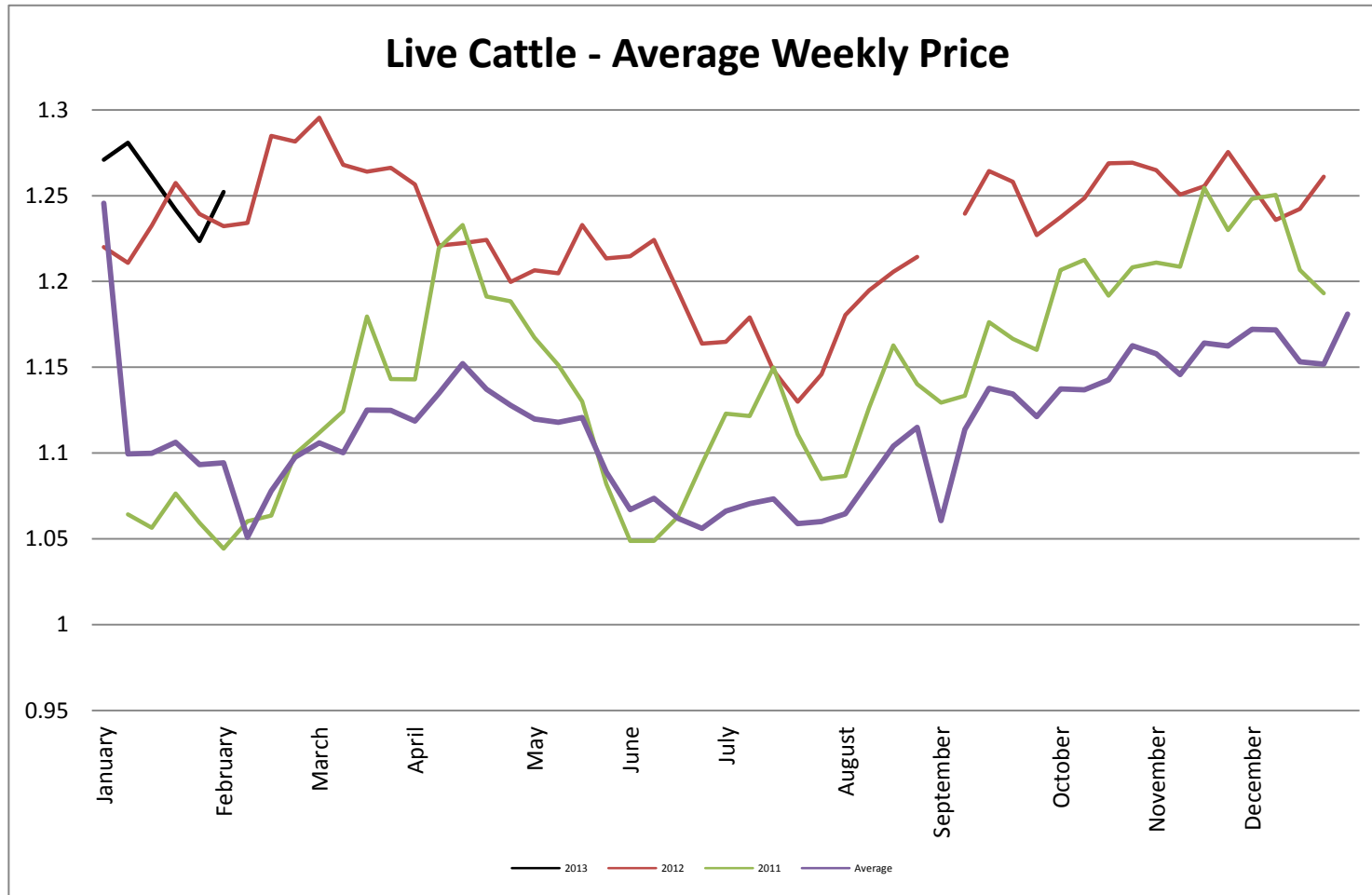
Milk Class III - CME Average Weekly Price CWT



Butter AA - CME Average Weekly Price lb

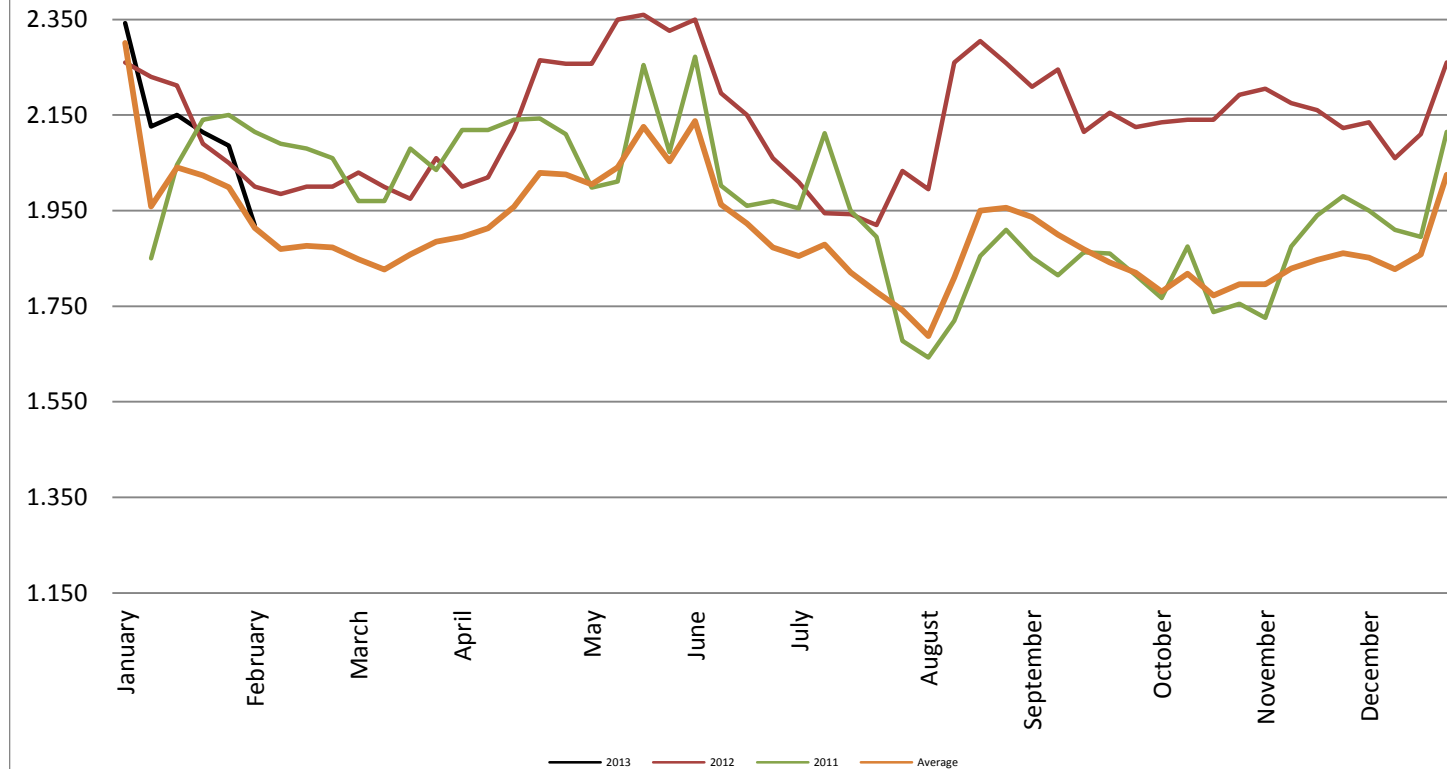


Live Cattle - Average Weekly Price USDA - 6 State Average

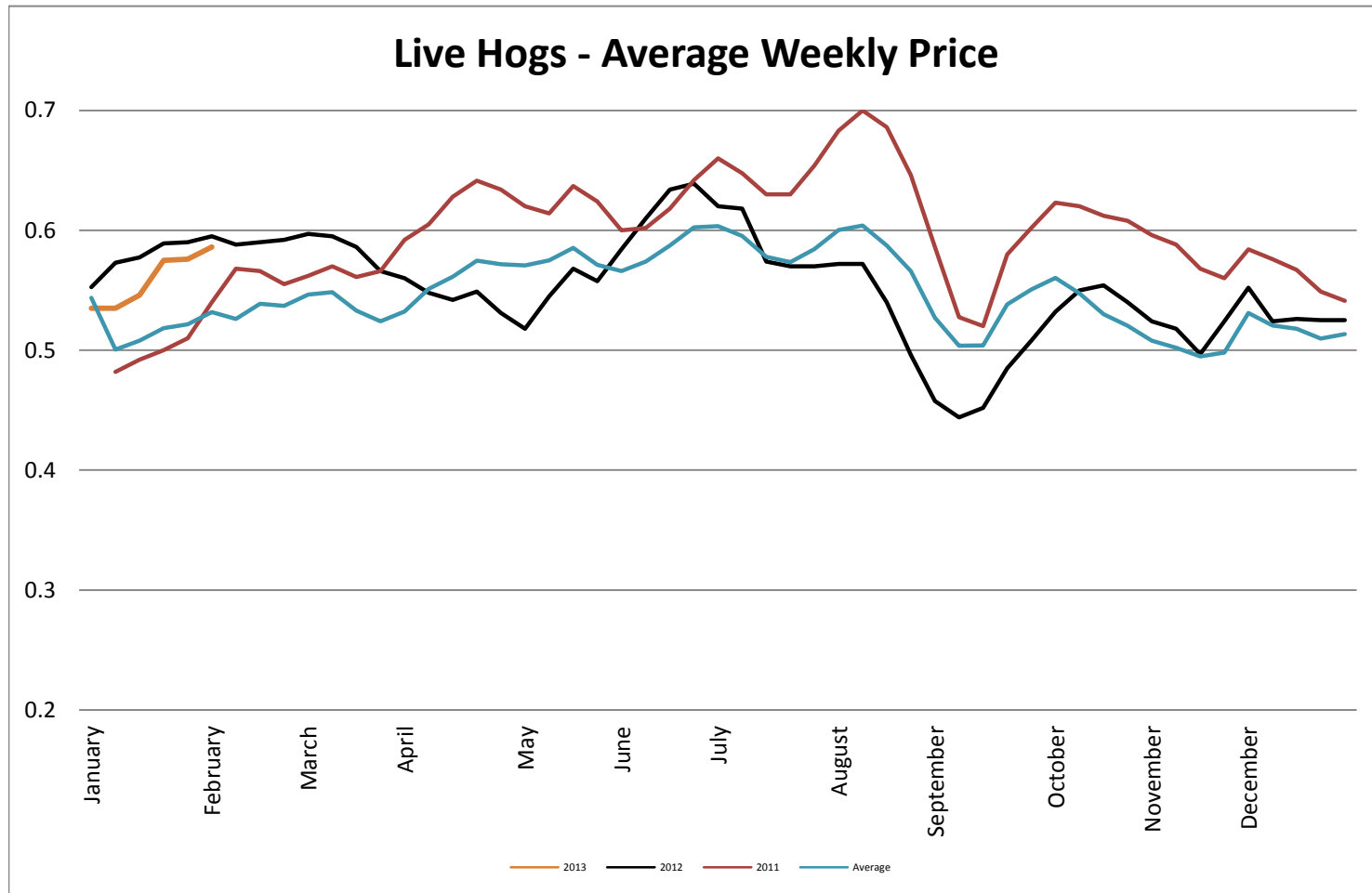


USDA Coarse ground 81% Steer & Heifer Source

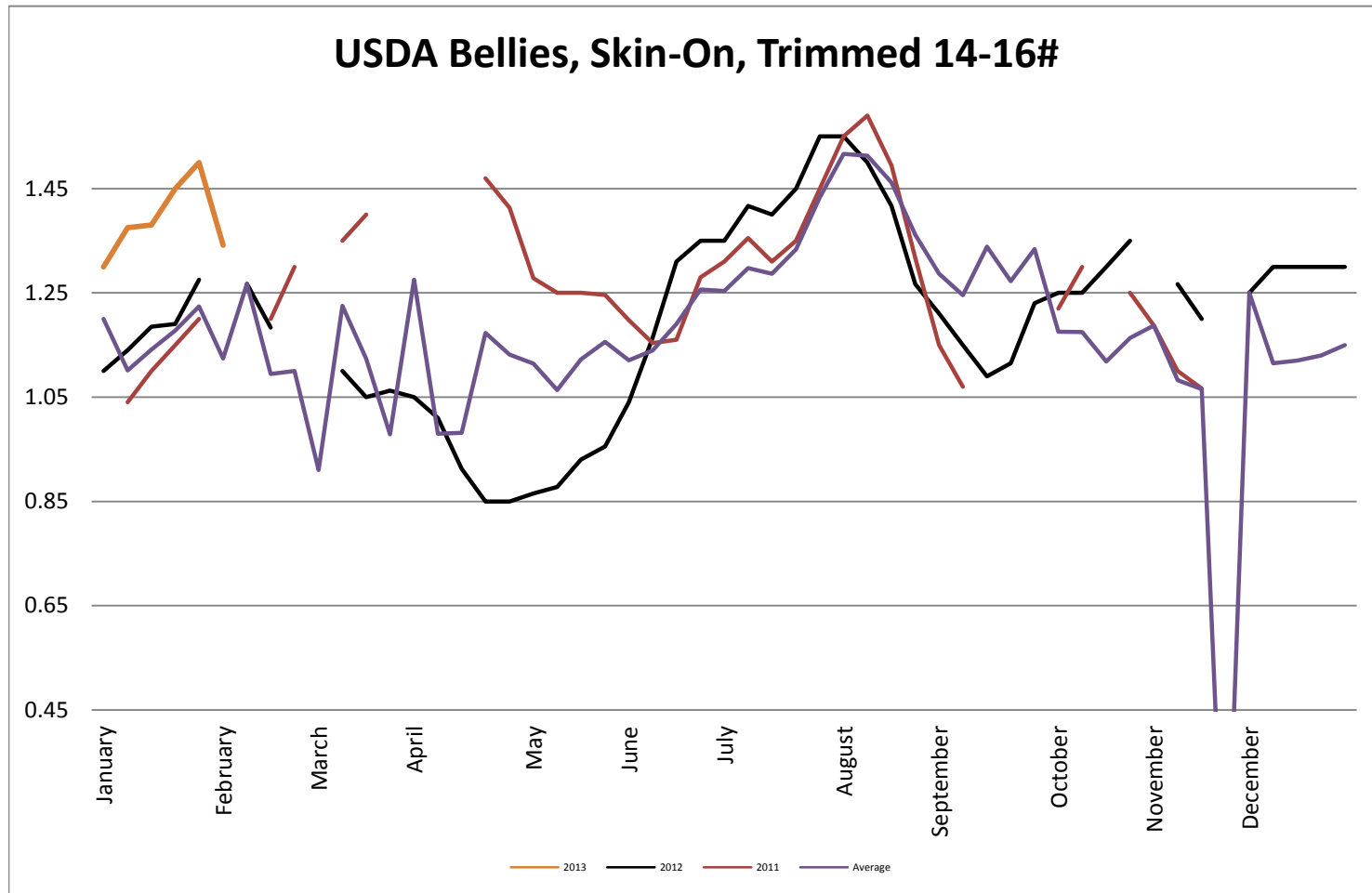
USDA Coarse ground 81% Steer & Heifer Source



USDA Live Hogs - Average Weekly Price

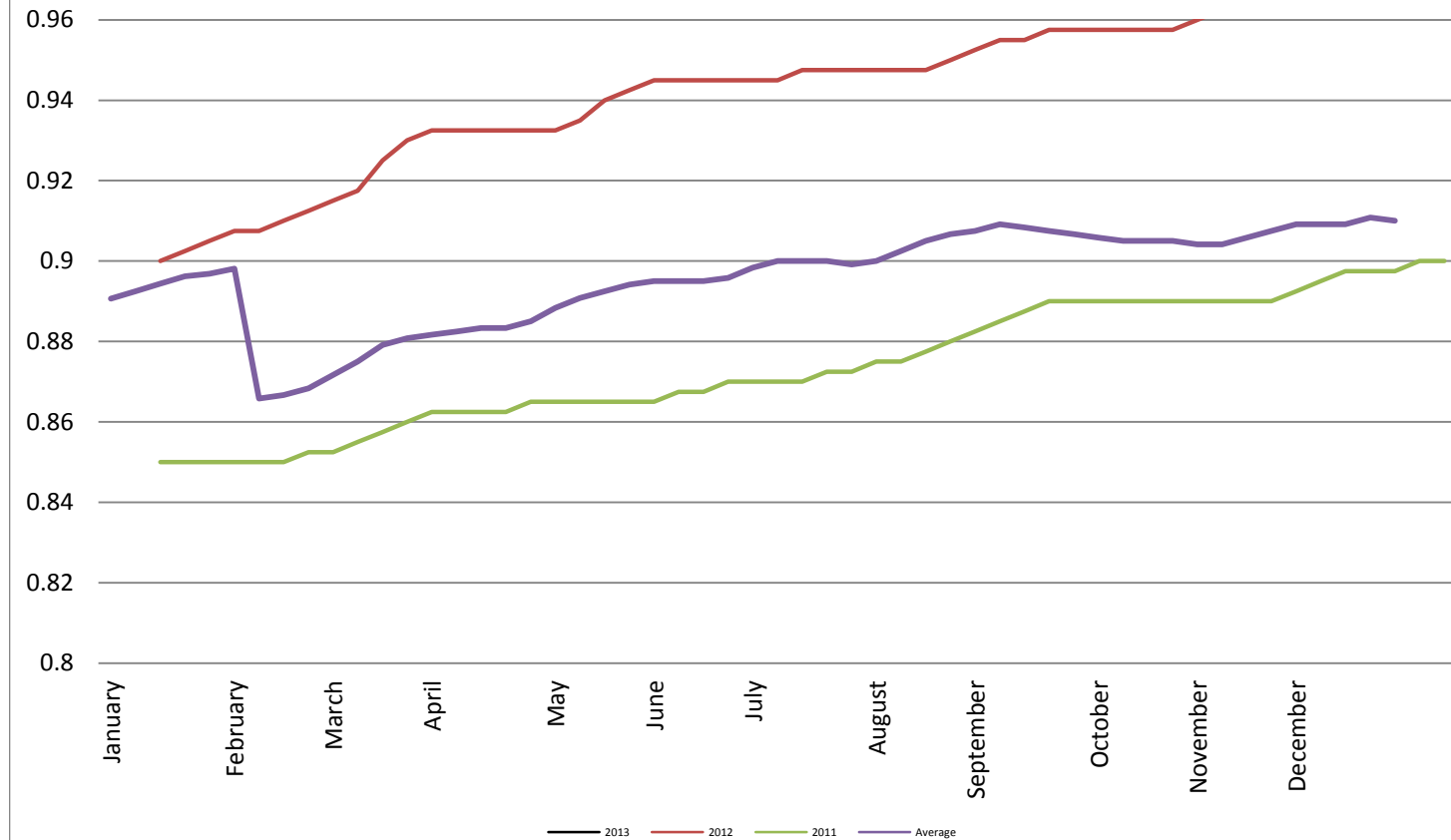


USDA Bellies, Skin-On, Trimmed 14-16#

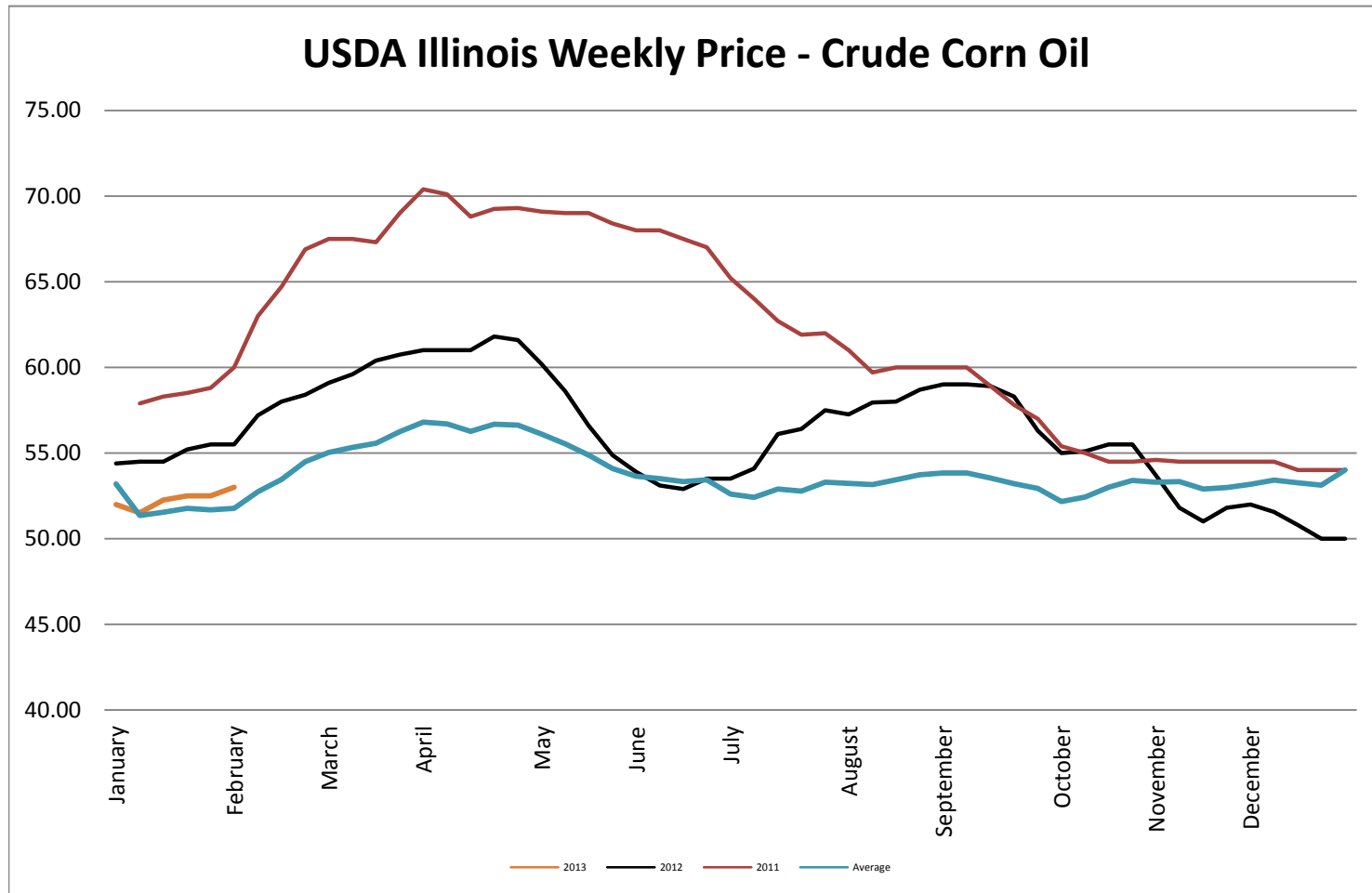


Georgia Dock Chicken - Final Weekly Price

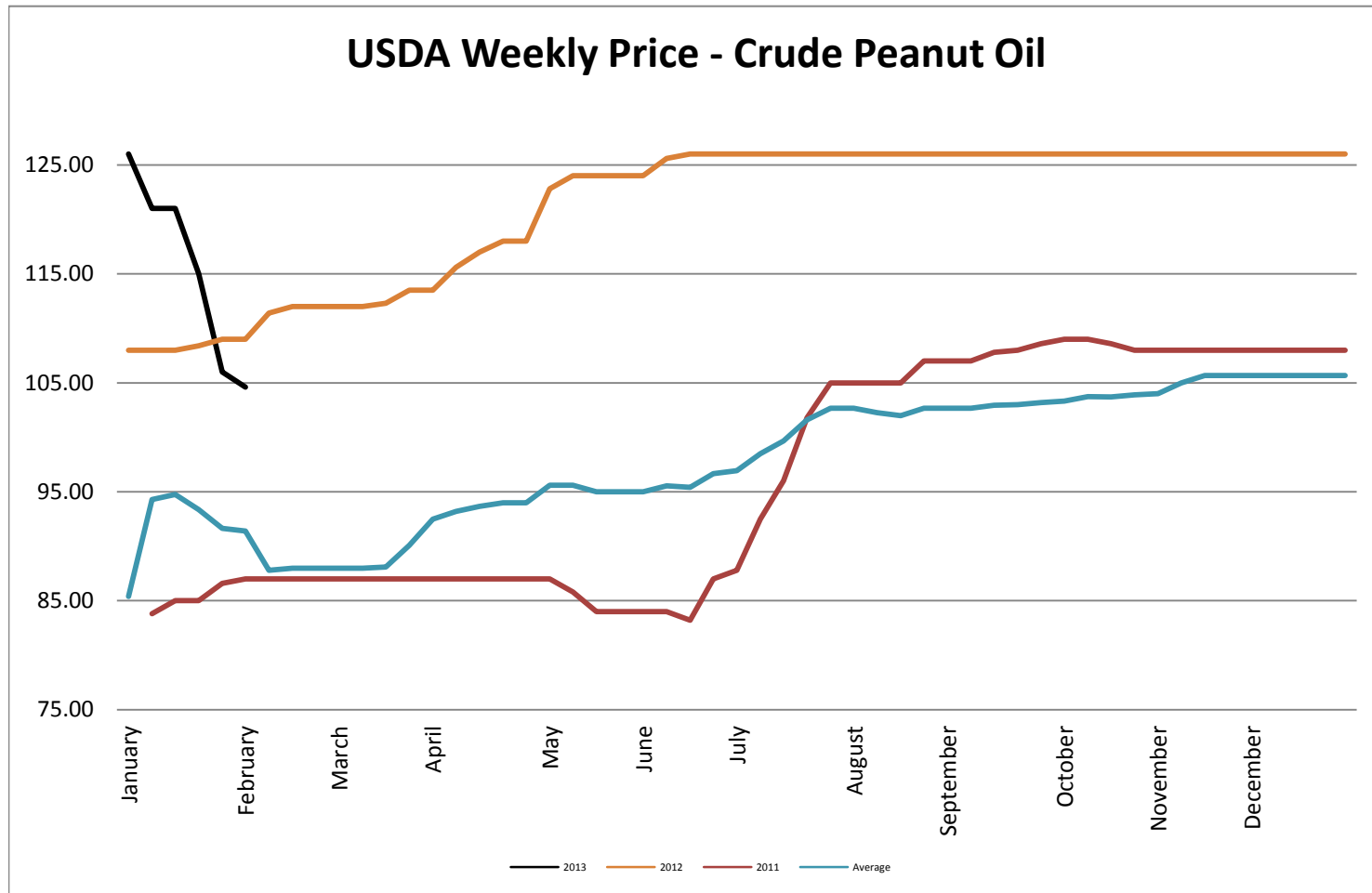
Georgia Dock Chicken Whole Bird - Final Weekly Price



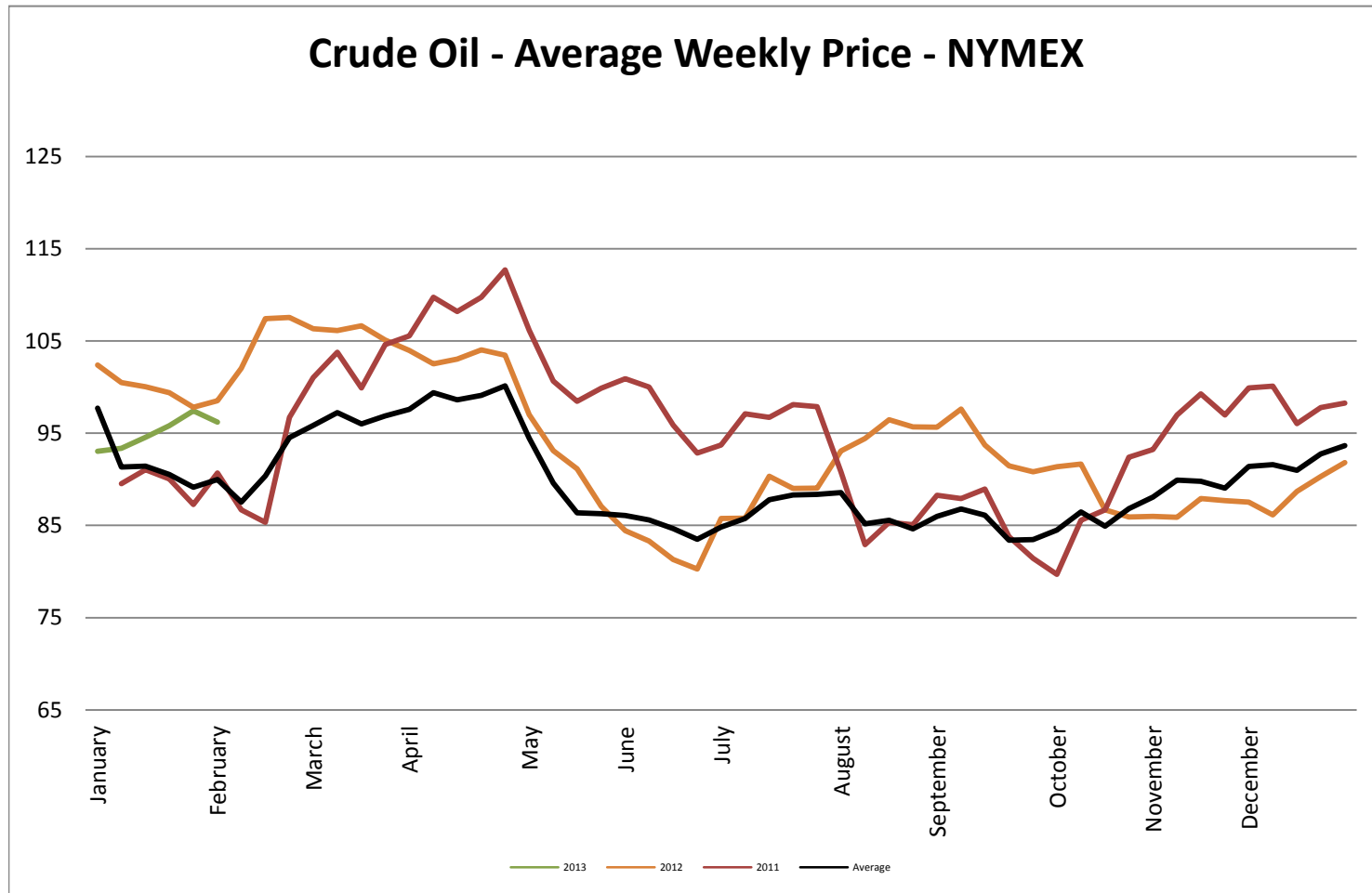
USDA Weekly Price - Crude Corn Oil



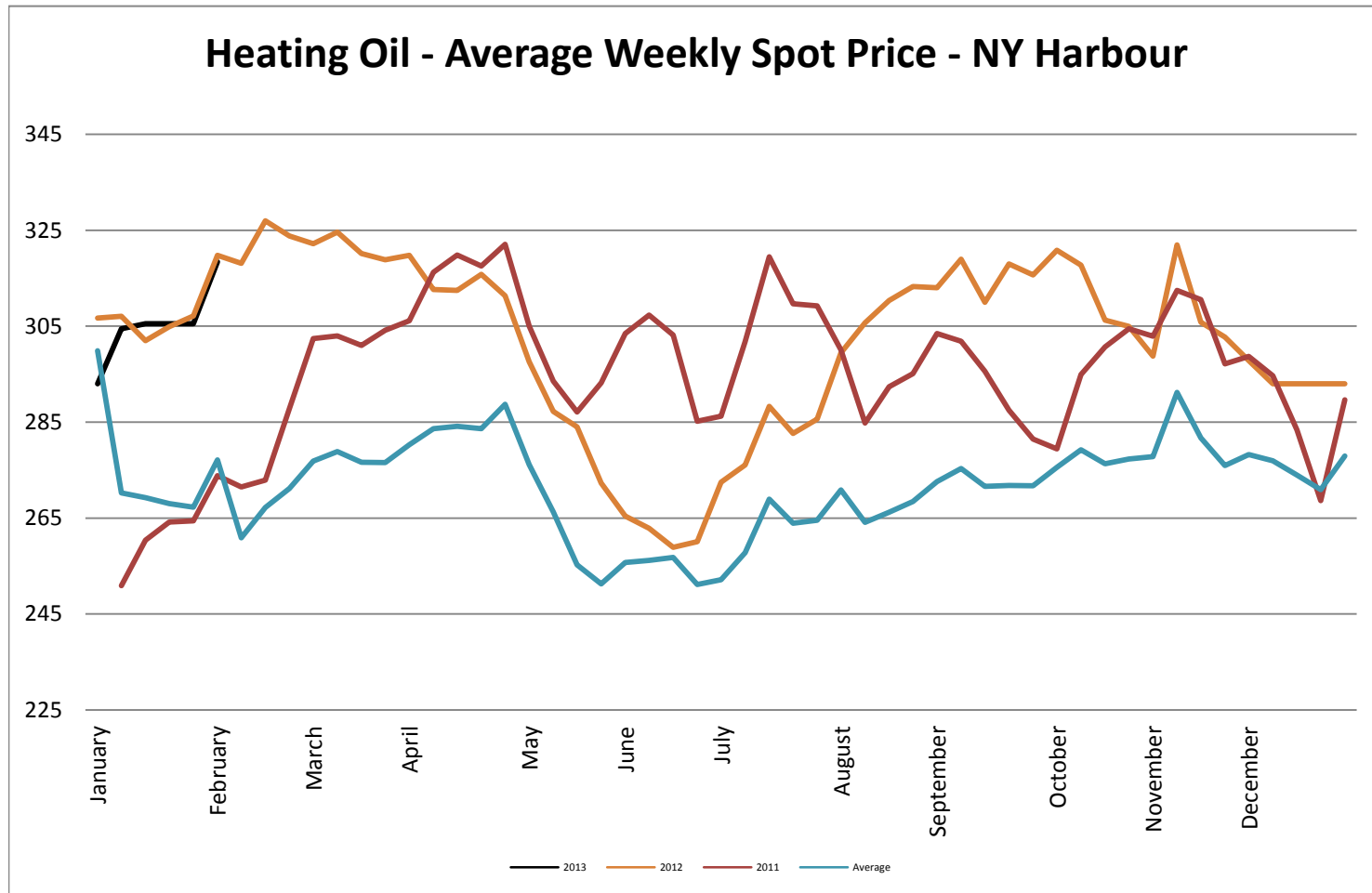
USDA Weekly Price - Crude Peanut Oil



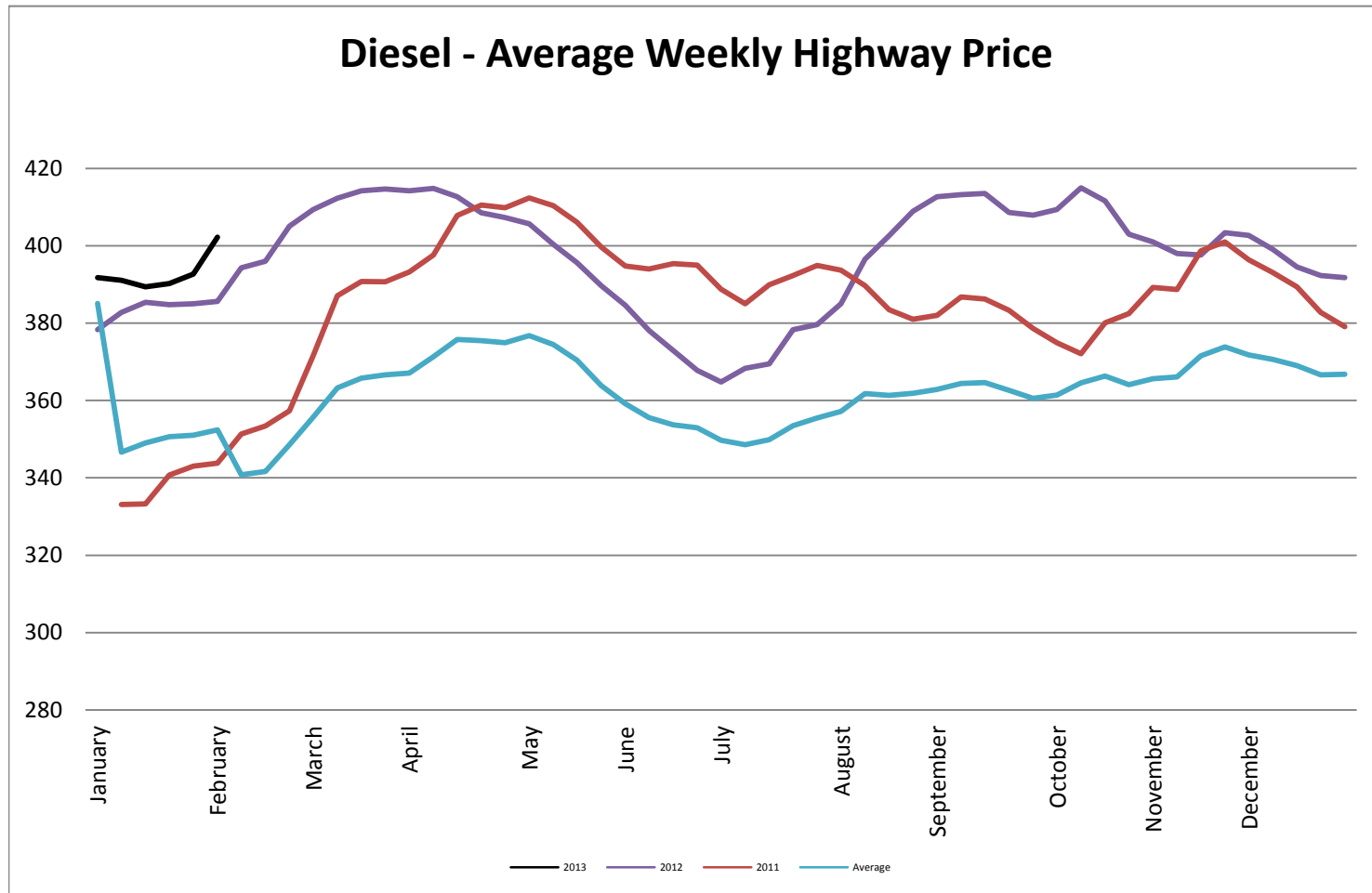
Crude Oil - Average Weekly Price - NYMEX



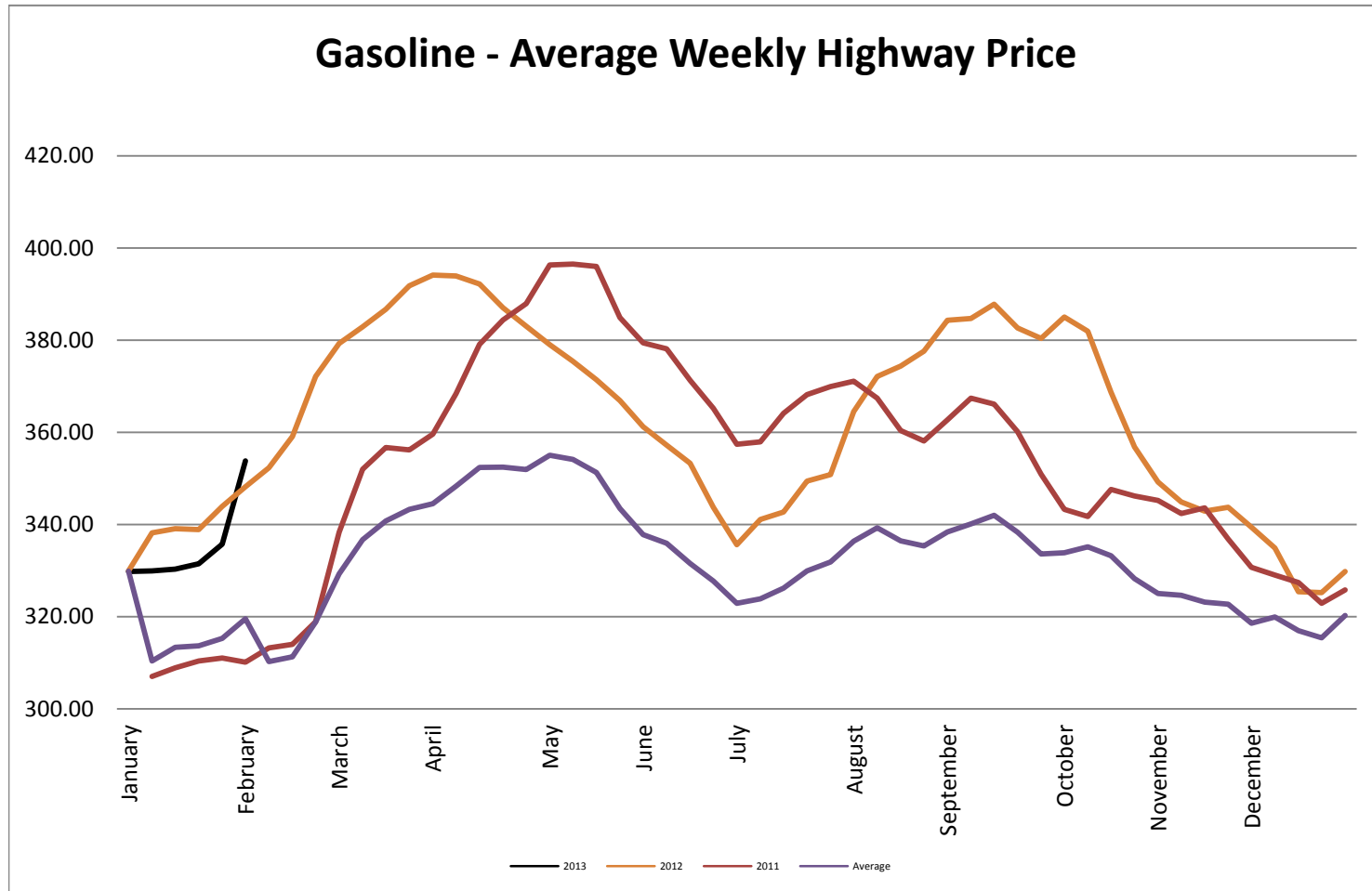
Heating Oil - Average Weekly Spot Price - NY Harbour



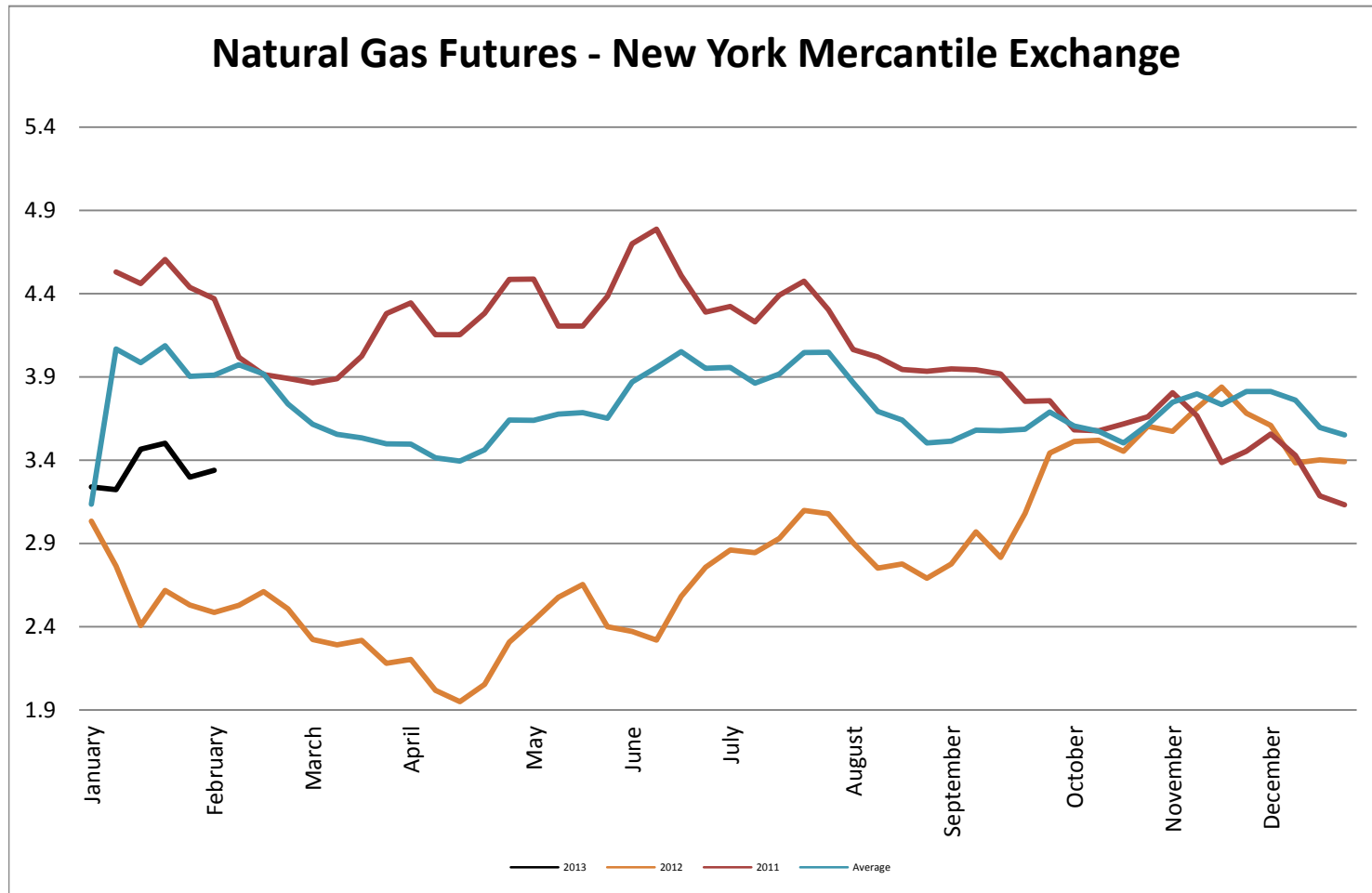
Diesel - Average Weekly Highway Price



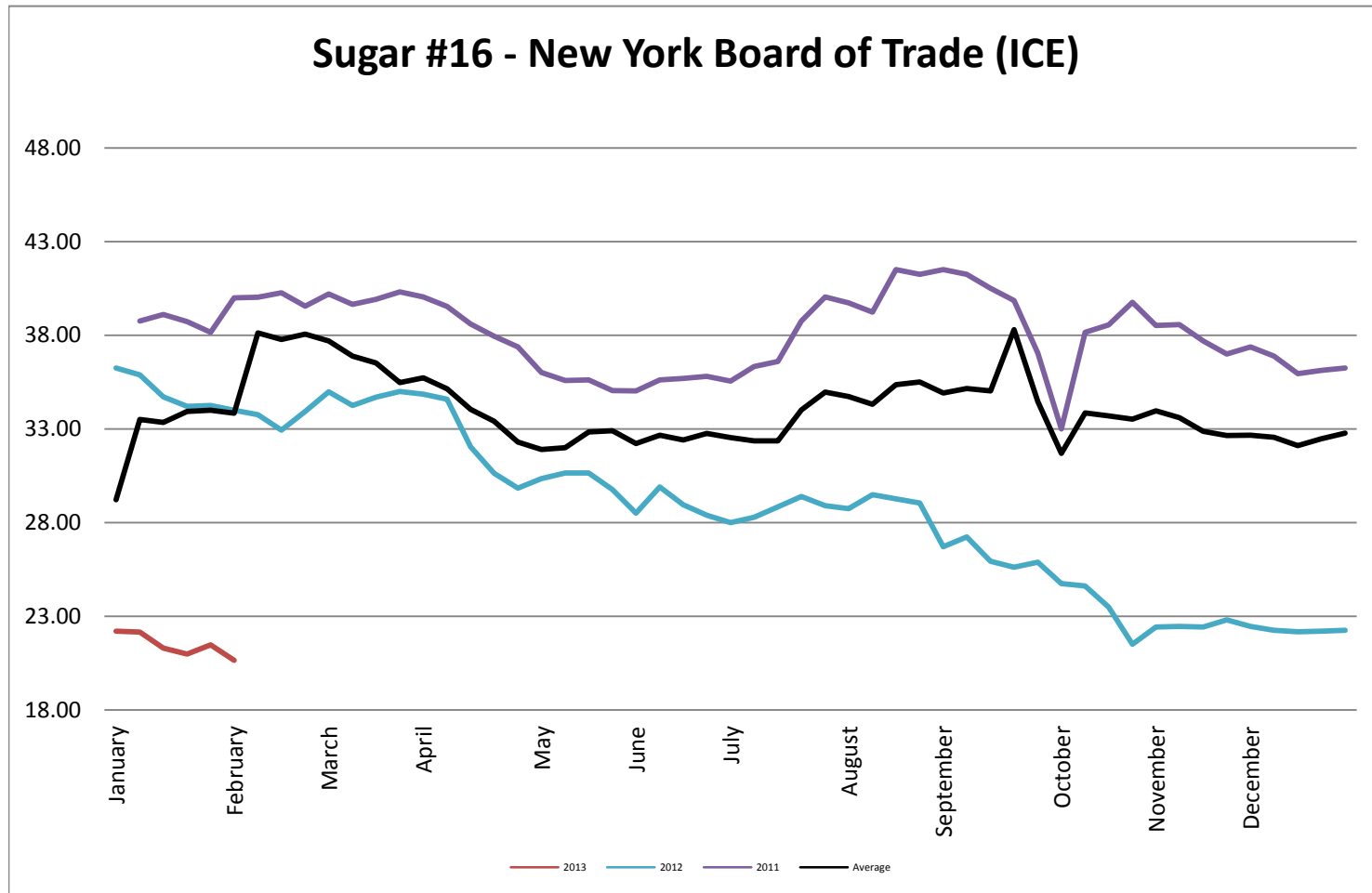
Gasoline Unleaded - Average Weekly Highway Price



Natural Gas Futures - New York Mercantile Exchange



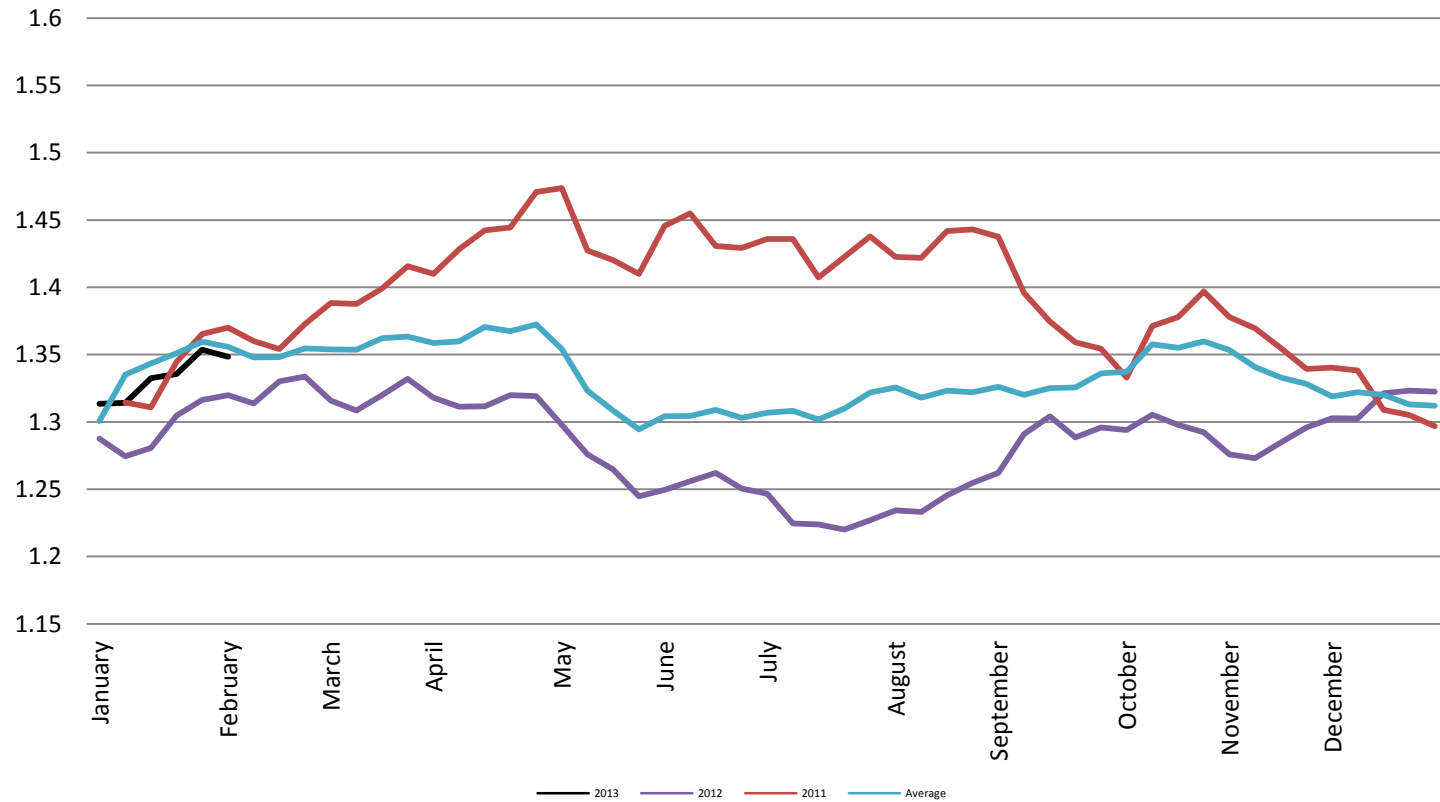
Sugar #16 - New York Board of Trade (ICE)



Foreign Exchange Rate - Euro, EMU Members

Foreign Exchange Rate - Euro, EMU Members

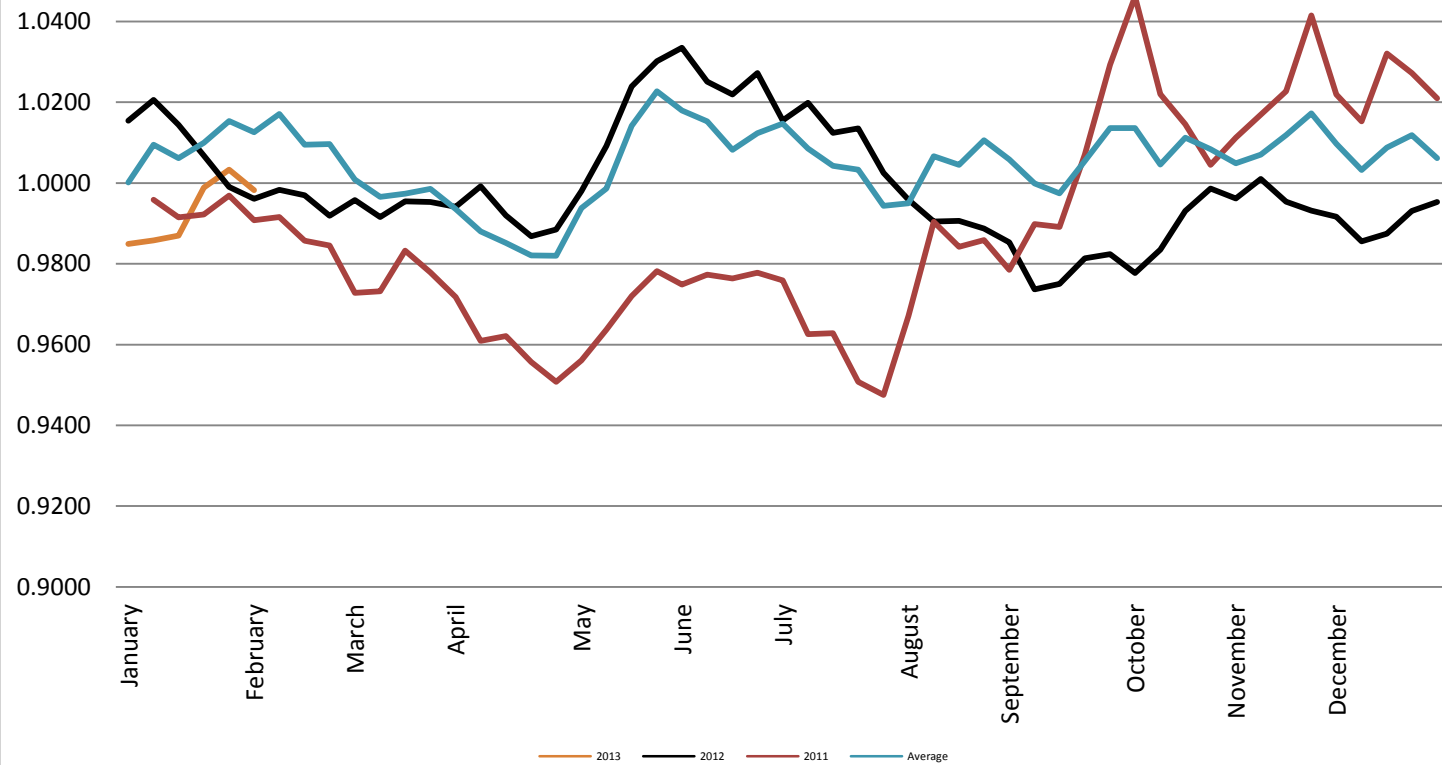
Federal Reserve Bank of New York



Foreign Exchange Rate - Canadian Dollar

Foreign Exchange Rate - Canadian Dollar

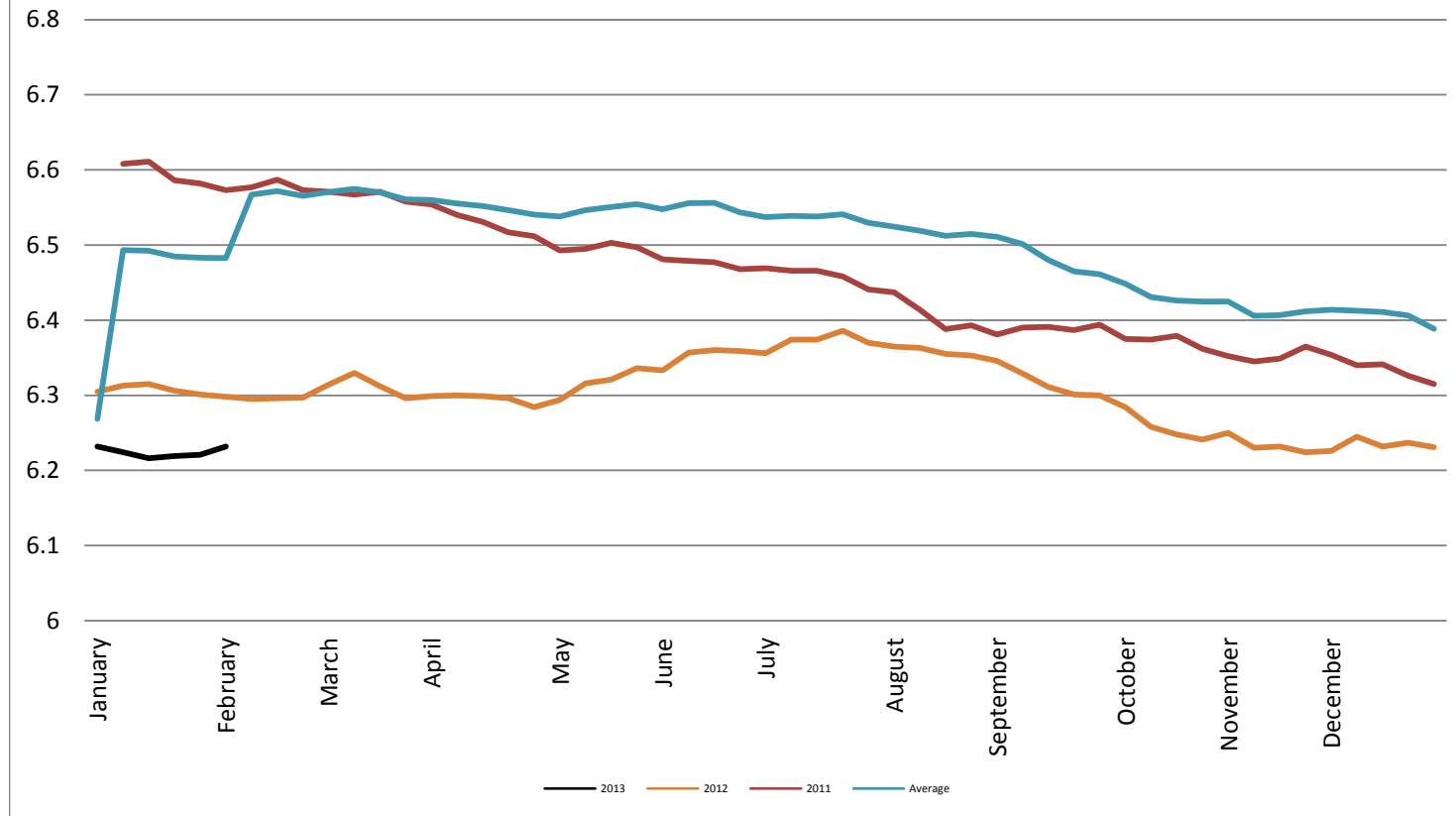
Federal Reserve Bank of New York



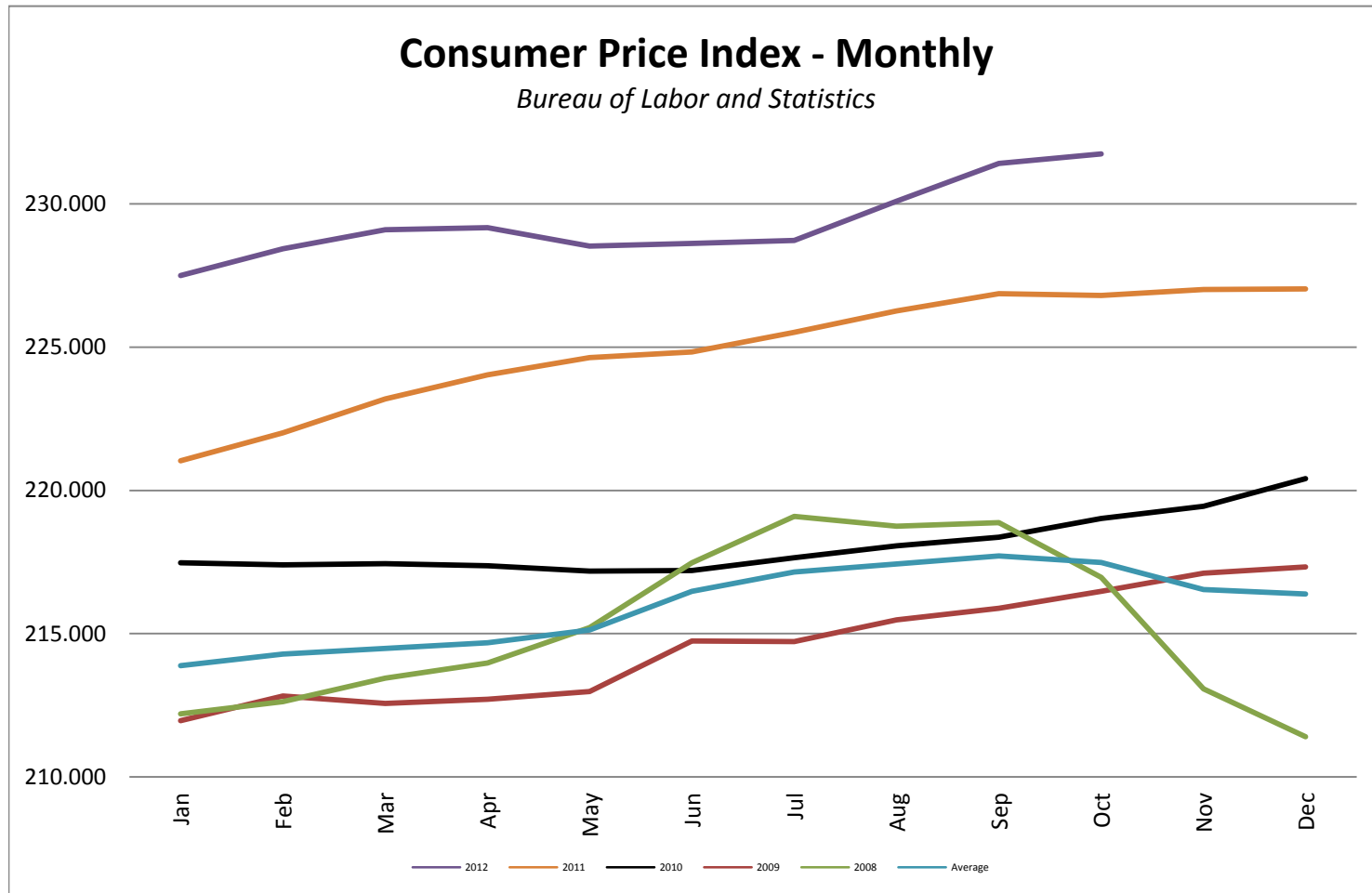
Foreign Exchange Rate - Chinese Yuan

Foreign Exchange Rate - Chinese Yuan

Federal Reserve Bank of New York

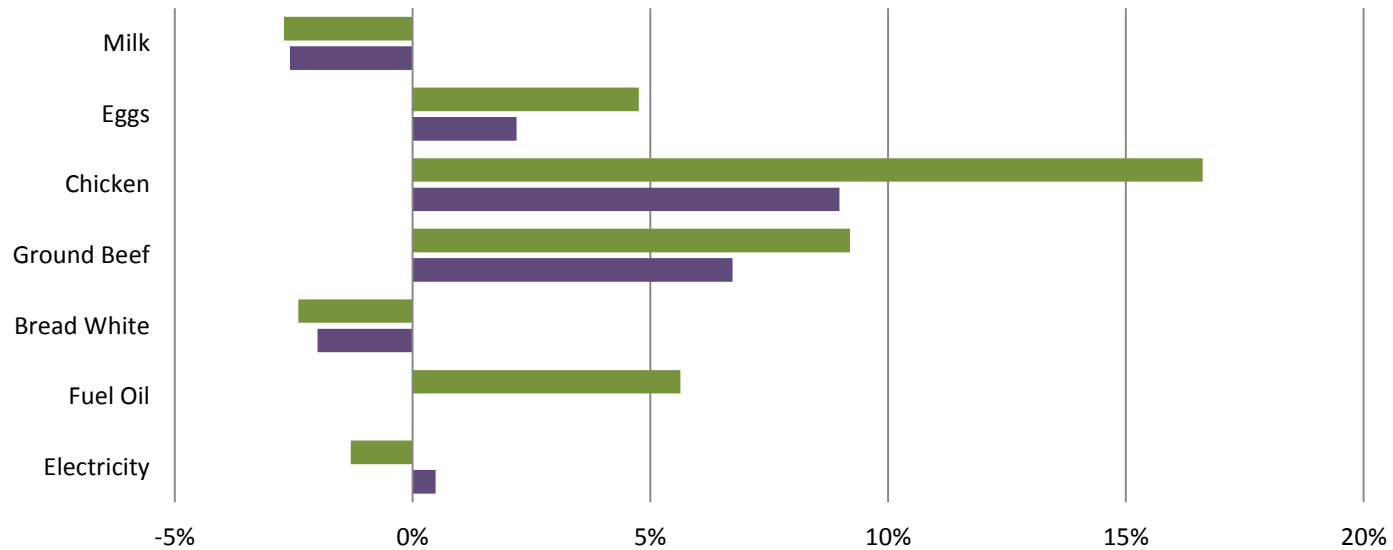


Consumer Price Index - Monthly



Consumer Price Index- Growth Percentage

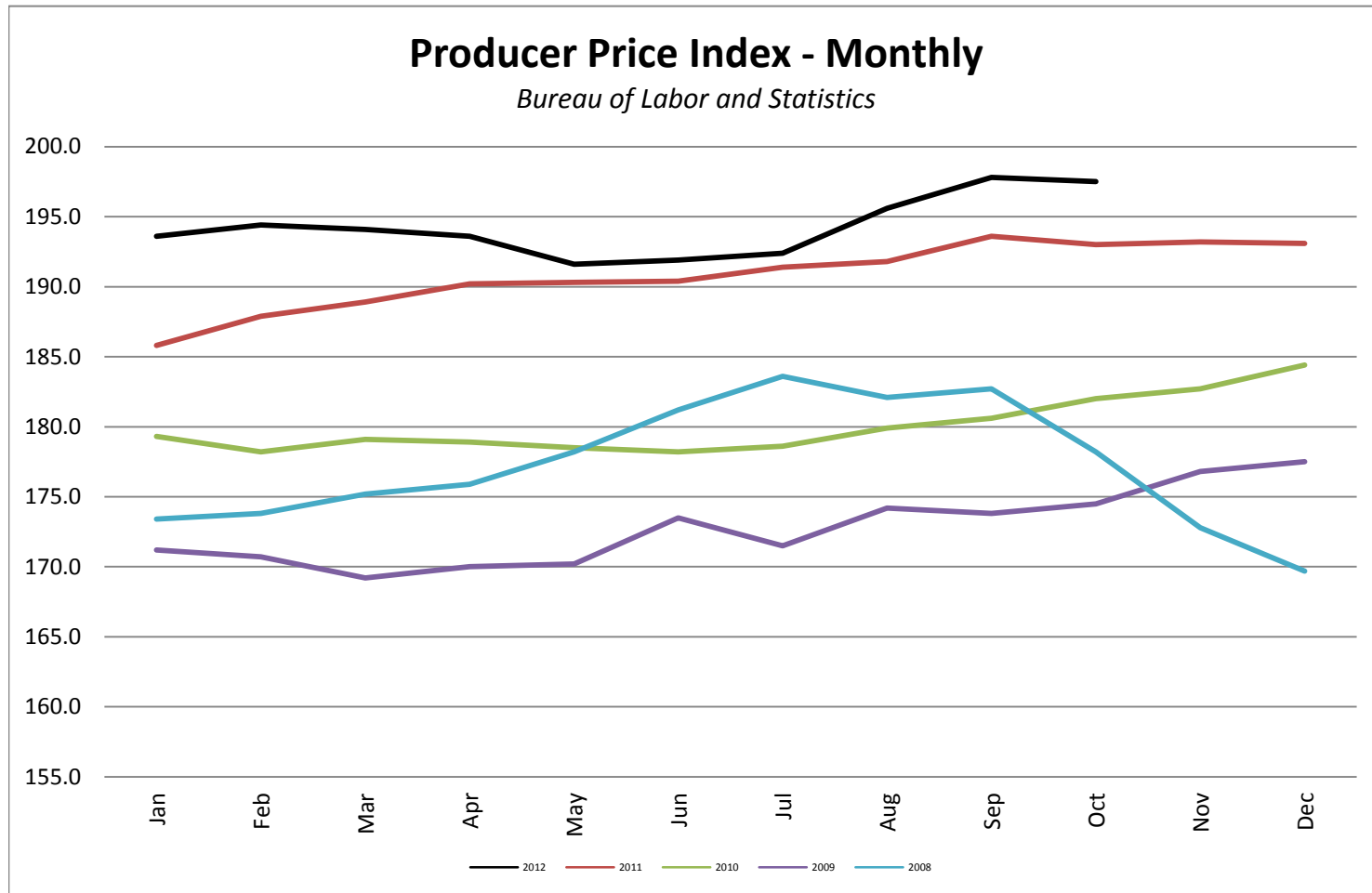
Bureau of Labor & Standards



	Electricity	Fuel Oil	Bread White	Ground Beef	Chicken	Eggs	Milk
OCT 12 vs. OCT 11	-0.012987588	0.056287754	-0.024021963	0.091982598	0.166158537	0.047568145	-0.027056875
YTD	0.004839689	0.000138365	-0.019981541	0.067273583	0.089726381	0.021870585	-0.025810215

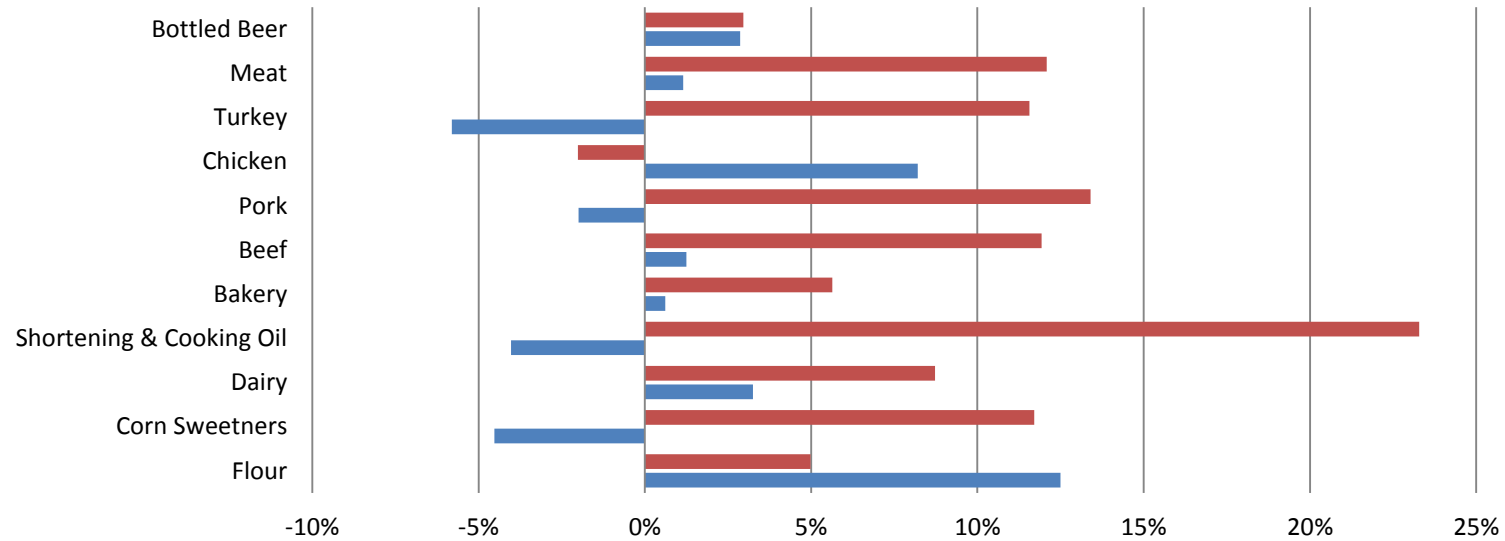
■ OCT 12 vs. OCT 11 ■ YTD

Producer Price Index - Monthly



PPI Commodities - Growth Percentage

Bureau of Labor & Standards



	Flour	Corn Sweetners	Dairy	Shortening & Cooking Oil	Bakery	Beef	Pork	Chicken	Turkey	Meat	Bottled Beer
OCT 12 VS. OCT 11	0.04984740	0.11708360	0.08728860	0.23280860	0.05634950	0.11927400	0.13401360	-0.02014800	0.11569050	0.12087910	0.02961560
YTD	0.12494110	-0.04528100	0.03252030	-0.04021100	0.00616570	0.01250980	-0.01993800	0.08203680	-0.05799990	0.01148770	0.02869350

OCT 12 VS. OCT 11 YTD