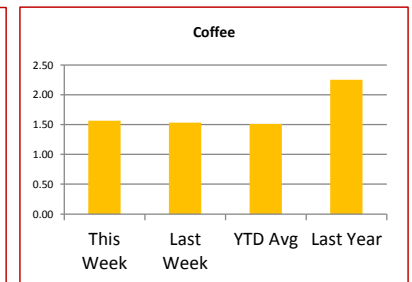
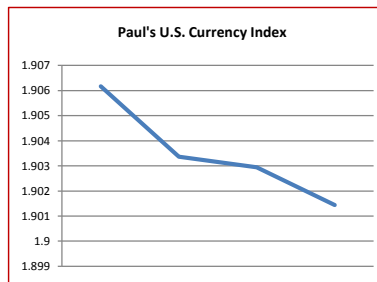
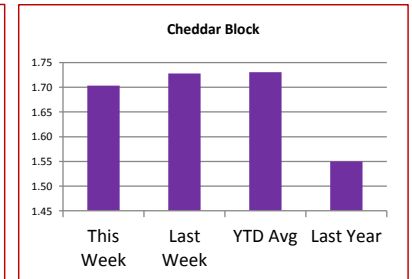
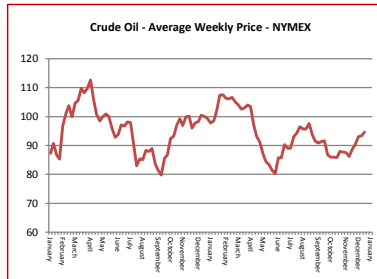
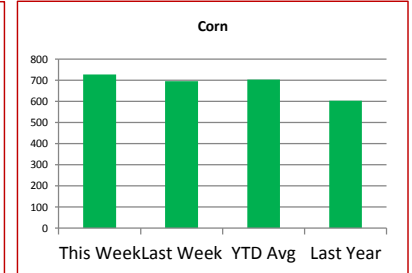
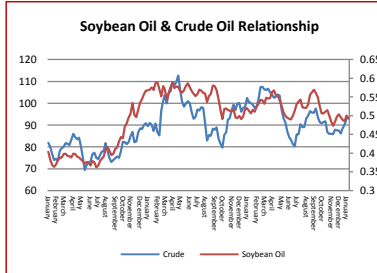


Key Commodity Report Weekly

January 21, 2013

Commodity Activity - Weekly Average

1/14/2013		This Week	Last Week	YTD Avg	Last Year	vs. Last Week	vs. Last Year
CME Group							
Corn	↑	727.55	695.20	703.17	603.75	4.65%	20.51%
Soybean	↑	1425.5	1417.3	1414.0	1187.8	0.58%	20.02%
Soy Meal	↑	415.38	404.44	407.82	312.53	2.70%	32.91%
Soybean Oil	↑	0.5116	0.4923	0.5015	0.5067	3.92%	0.97%
Rough Rice	↑	15.16	15.04	15.08	14.54	0.83%	4.30%
Wheat	↑	781.45	749.30	761.14	603.50	4.29%	29.49%
Cheddar Barrel	↓	1.660	1.686	0.000	1.520	-1.54%	9.18%
Cheddar Block	↓	1.704	1.728	1.731	1.550	-1.42%	9.90%
Milk Class III	↑	18.10	18.02	0.00	17.08	0.46%	5.98%
Butter AA	↑	1.489	1.458	0.000	1.580	2.13%	-5.79%
Source: CME Group							
USDA Weekly Prices							
Live Cattle	↓	1.261	1.281	0.000	1.233	-1.51%	2.34%
Course Ground Beef	↑	2.150	2.126	0.000	2.212	1.12%	-2.80%
Live Hog	↑	0.5460	0.5350	0.5387	0.5775	2.06%	-5.45%
Pork Bellies	↑	1.38	1.38	1.35	1.19	0.36%	16.46%
Chicken Whole (GA Dock)	↑	0.9925	0.9900	0.9892	0.9050	0.25%	9.67%
Crude Corn Oil	↑	52.25	51.50	51.92	54.50	1.46%	-4.13%
Crude Peanut Oil	↔	121.00	121.00	122.67	108.00	0.00%	12.04%
Source: USDA							
NYMEX Futures & Retail							
Crude Oil	↑	94.54	93.36	93.65	100.04	1.26%	-5.49%
Heating Oil No.2 Spot	↑	305.55	304.50	301.03	301.98	0.34%	1.18%
On Highway Diesel	↓	389.40	391.10	390.77	385.40	-0.43%	1.04%
On Highway Gasoline	↑	330.30	329.90	330.00	339.10	0.12%	-2.60%
Natural Gas	↑	3.465	3.223	0.000	2.406	7.51%	44.01%
Source: New York Mercantile Exchange							
Federal Reserve							
*Euro	↑	1.3324	1.3142	1.3201	1.2807	1.38%	4.04%
*British Pound	↓	1.599	1.6065	1.6076	1.5406	-0.47%	3.79%
Canadian Dollar	↑	0.9870	0.9858	0.9859	1.0144	0.12%	-2.70%
Chinese Yuan	↓	6.216	6.224	6.224	6.315	-0.13%	-1.57%
Swiss Frank	↑	0.928	0.922	0.923	0.944	0.74%	-1.64%
Source: Federal Reserve Bank of New York							
NYBOT Futures							
Sugar 16	↓	21.30	22.15	36.41	34.71	-3.84%	-38.63%
Coffee	↑	1.5630	1.5335	1.5125	2.2540	1.92%	-30.66%
Source: Intercontinental Exchange							



Market Commentary

Commentary: Ending stocks for both corn and soybeans remains historically low. Also exports picked up for both beans and corn. This helped run futures prices higher last week for corn and the entire soybean complex. Wheat also ran up substantially last week, keeping in step with corn and beans. Some traders equate the higher price trend back to ending stock issue, where traders are running prices higher to ration demand and encourage Asian markets to go to ports other than the U.S. It looks to me like traders are short-covering for both beans and corn. Volume reports suggest that I am right. They are taking longer positions for bean oil due to the return of subsidies for biodiesel.

Corn futures closed between \$7.24 and \$7.31-1/4 per bushel, ending the week at \$7.27-1/2.

Soybean futures closed between \$14.31-1/2 and \$14.36-1/2 per bushel, ending the week at \$14.29-1/4.

Soybean meal futures closed between \$411.90 and \$419.10 per short ton, ending the week at \$414.40.

Soybean oil futures closed between \$0.5045 and \$0.5168 per pound, ending the week at \$0.5168.

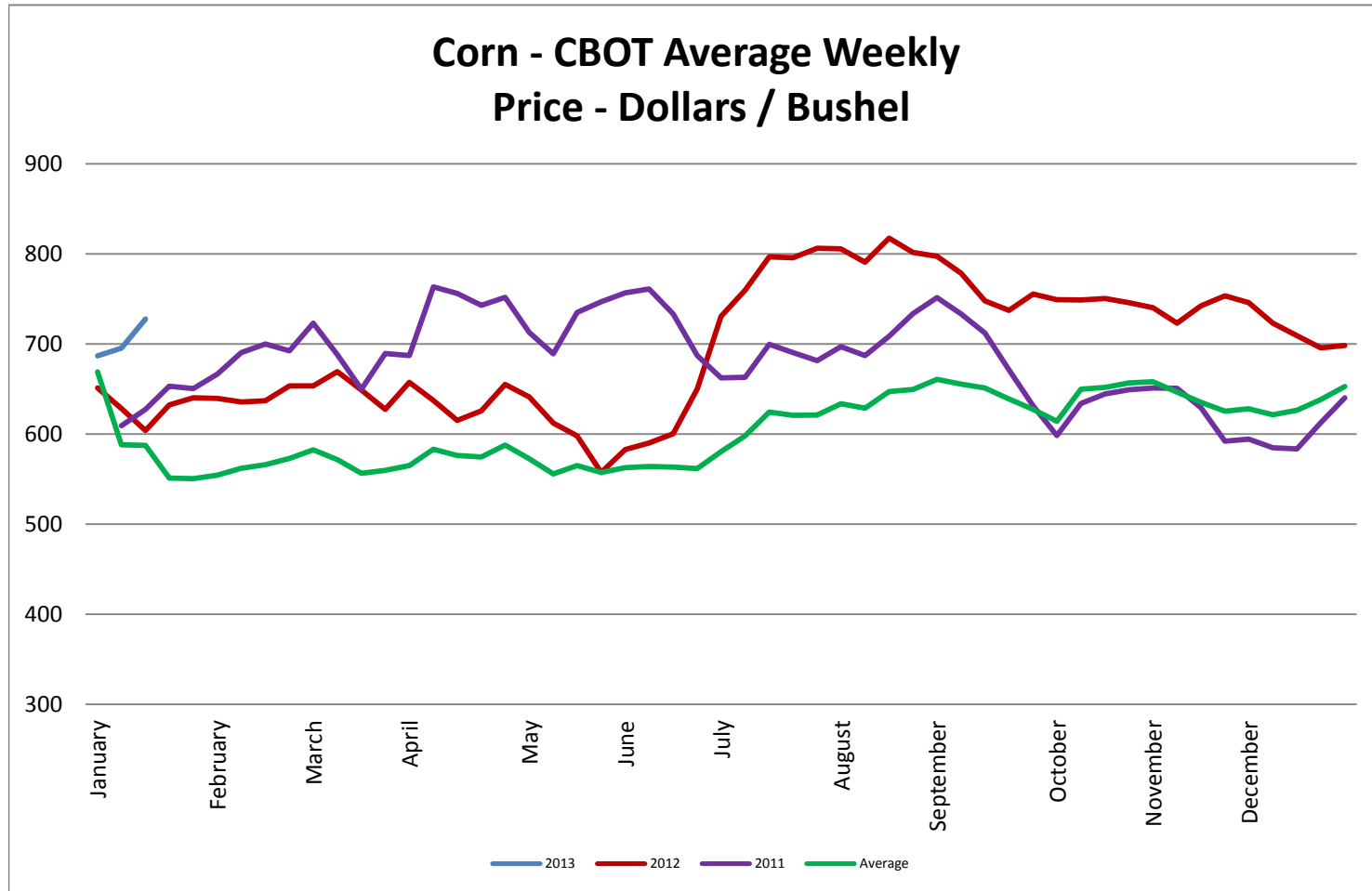
Wheat futures closed between \$7.67 and \$7.91-1/4 per bushel, ending the week at \$7.91-1/4.

* Used as the indexing unit of measure for this exchange rate

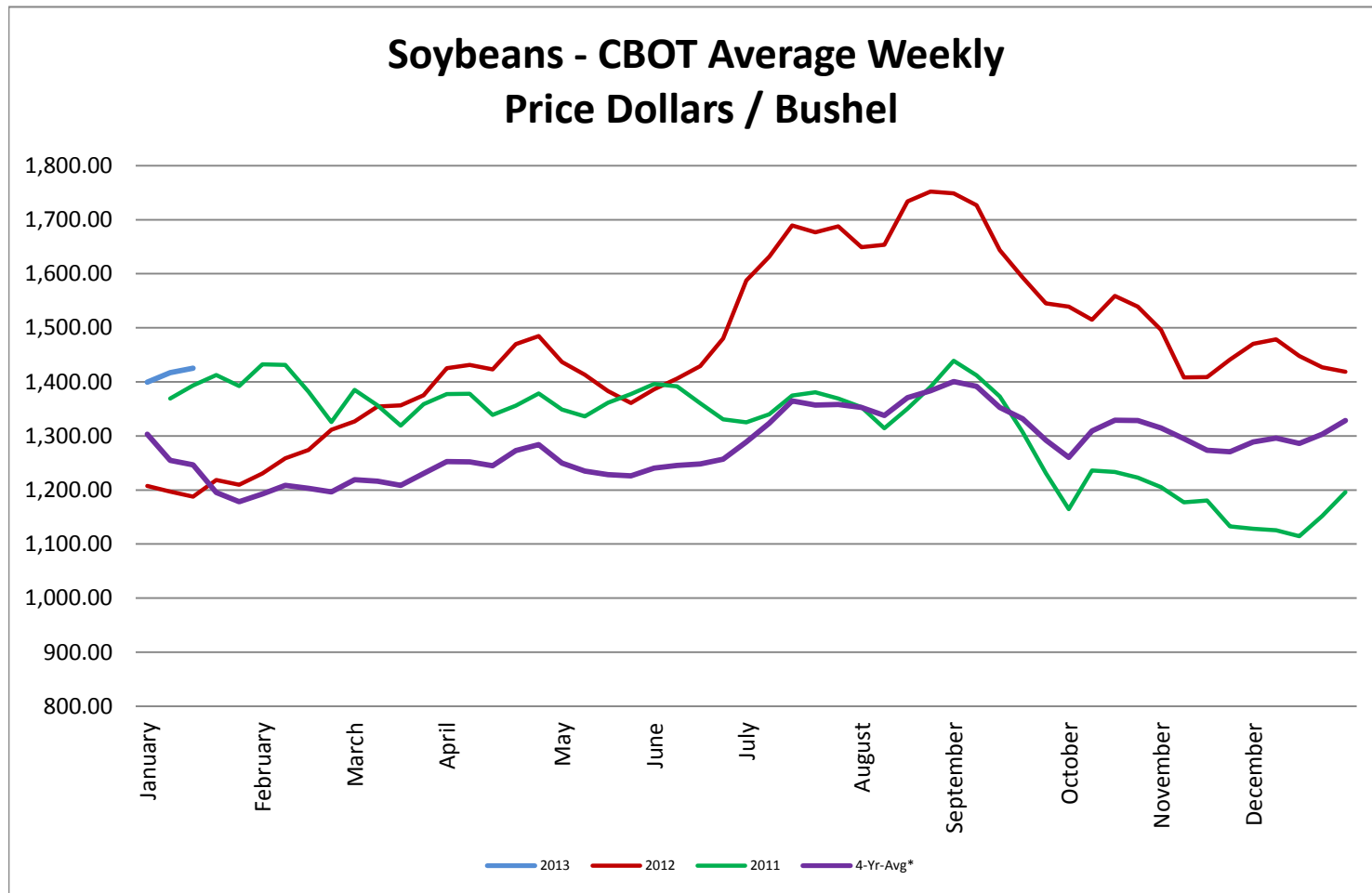
Commodity Information: Commodity information found in this sheet is publically available. It can be found from numerous sources, all of which are noted. This report is for informational purposes only. Please do not make hedging or buying decisions based on this report. Please note that rounding can affect the percent of change values.* Paul's Currency Index compares the U.S. Dollar to five other currencies, Euro, British Pound, Swiss Frank, Canadian Dollar, and Chinese Yuan.

Bearish	Market is moving downward
Bullish	Market is moving upward
Short Ton	U.S. ton equalling 2000 pounds
Metric Tonne	Equal to 1000 kilograms or 2240 pounds

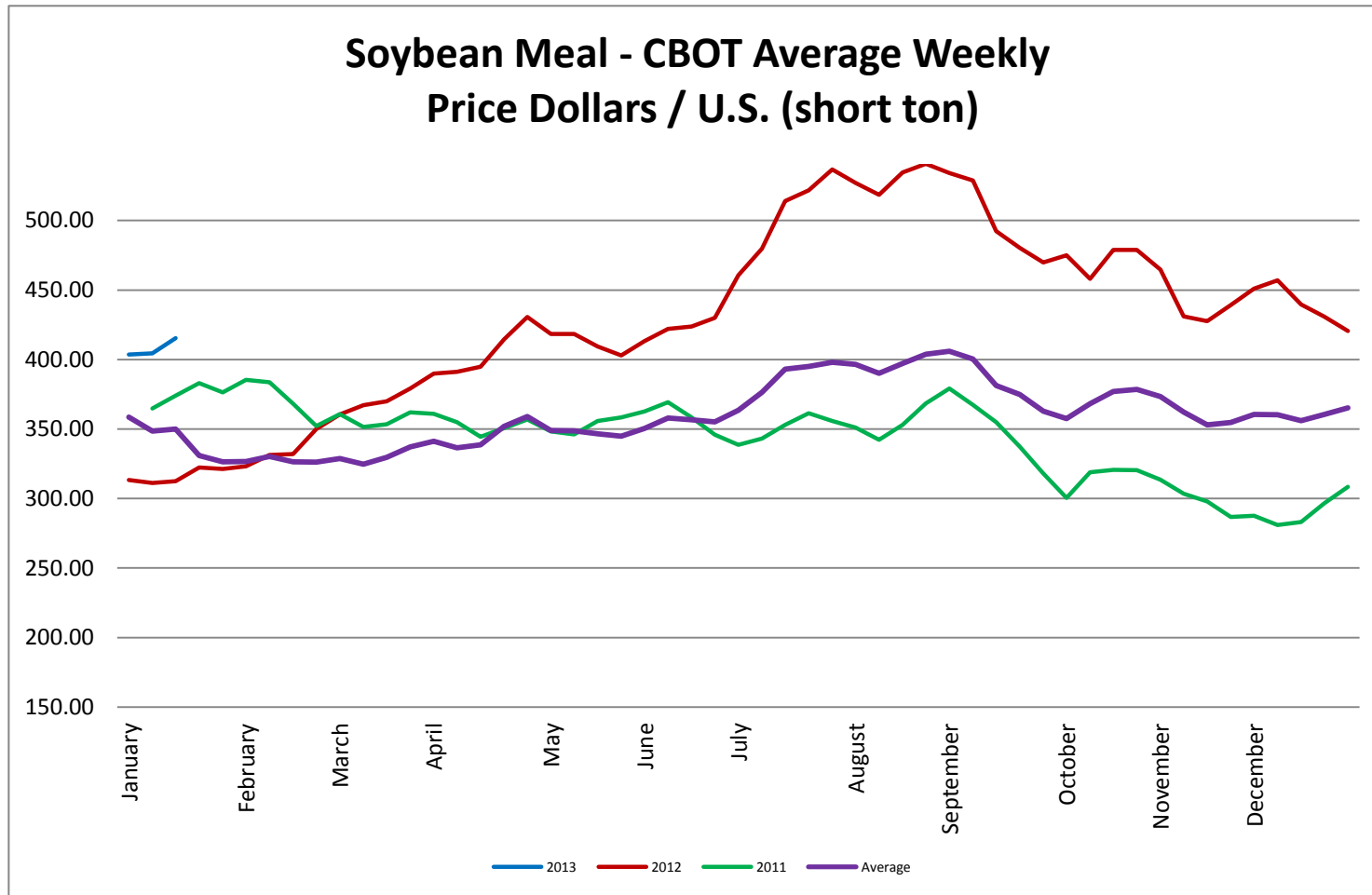
Corn - CBOT Weekly Futures Price



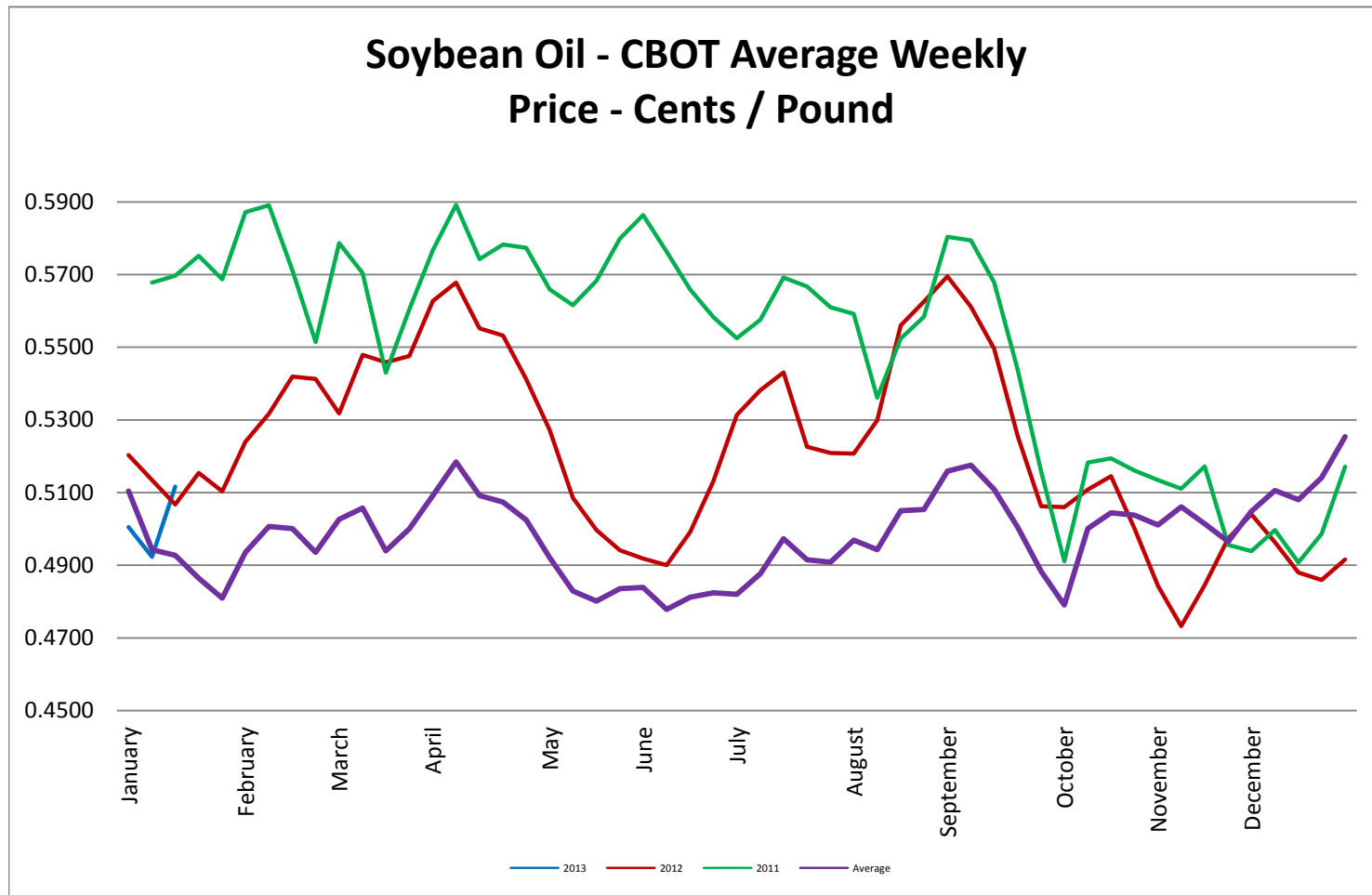
Soybeans - CBOT Weekly Average Price - Dollars / Bushel



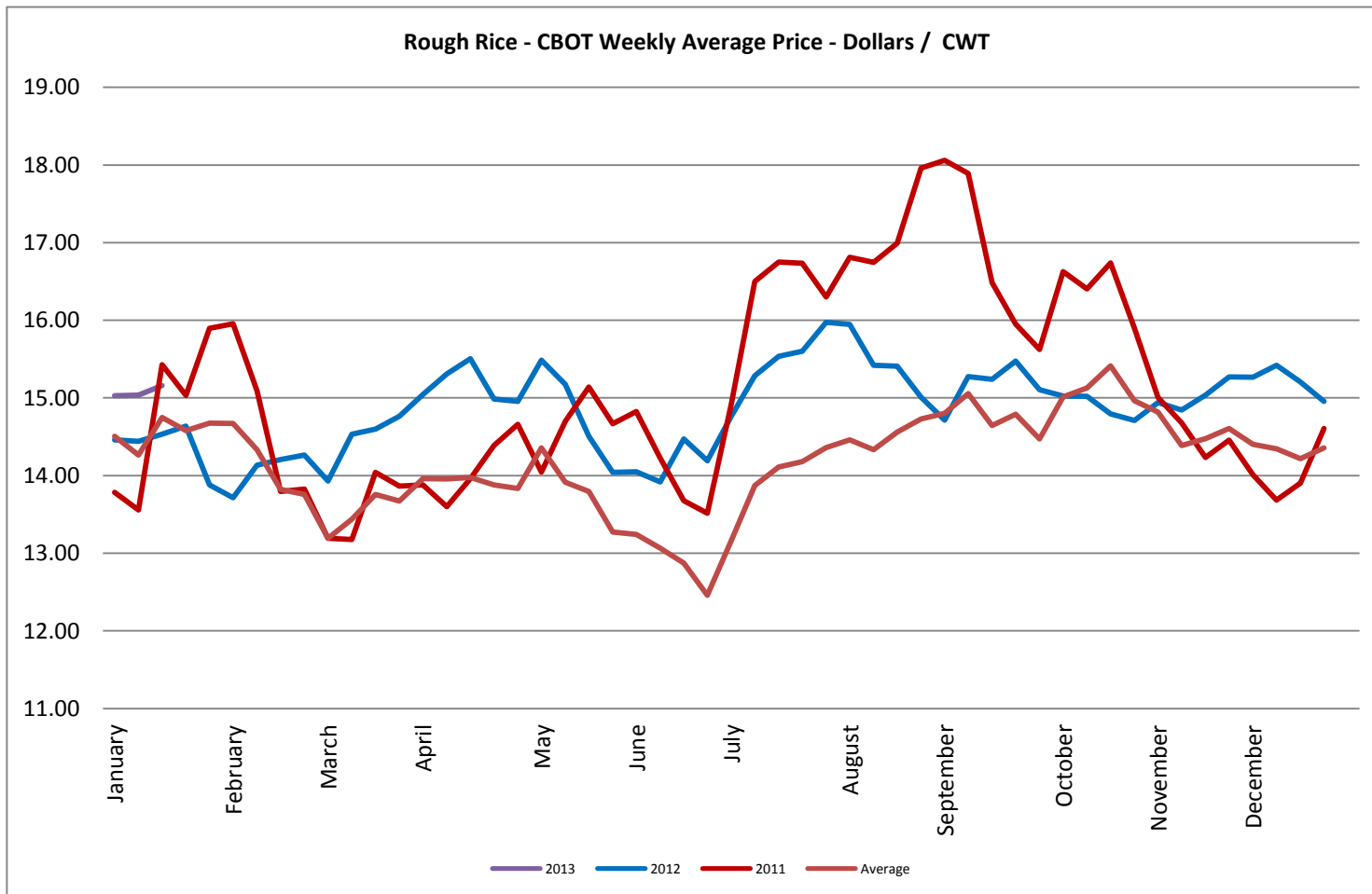
Soybean Meal - CBOT Weekly Average Price - Dollars / US Ton



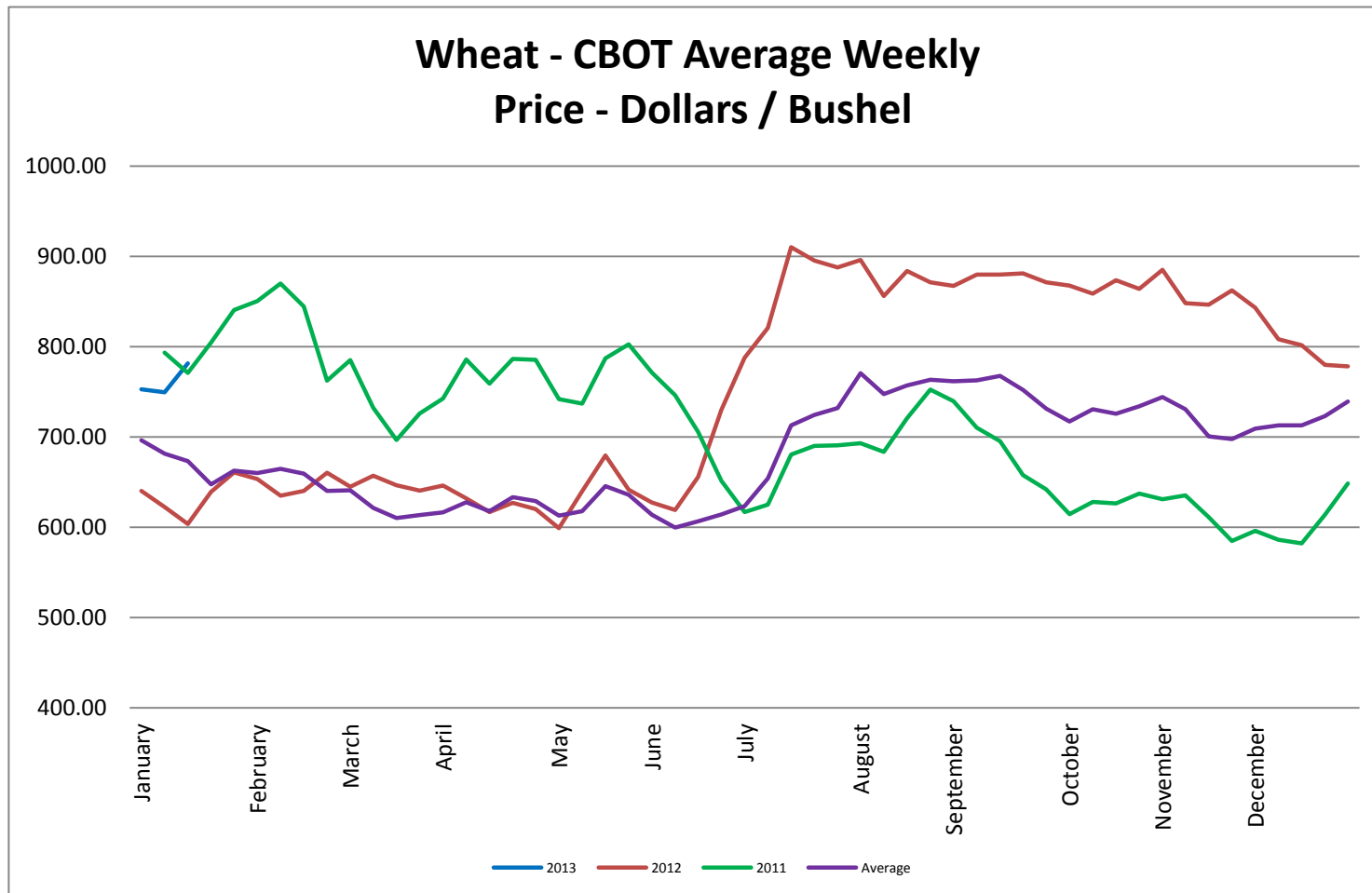
Soybean Oil - CBOT Weekly Average Price - Cents / Pound



Rough Rice - CBOT Weekly Average Price - Dollars / CWT

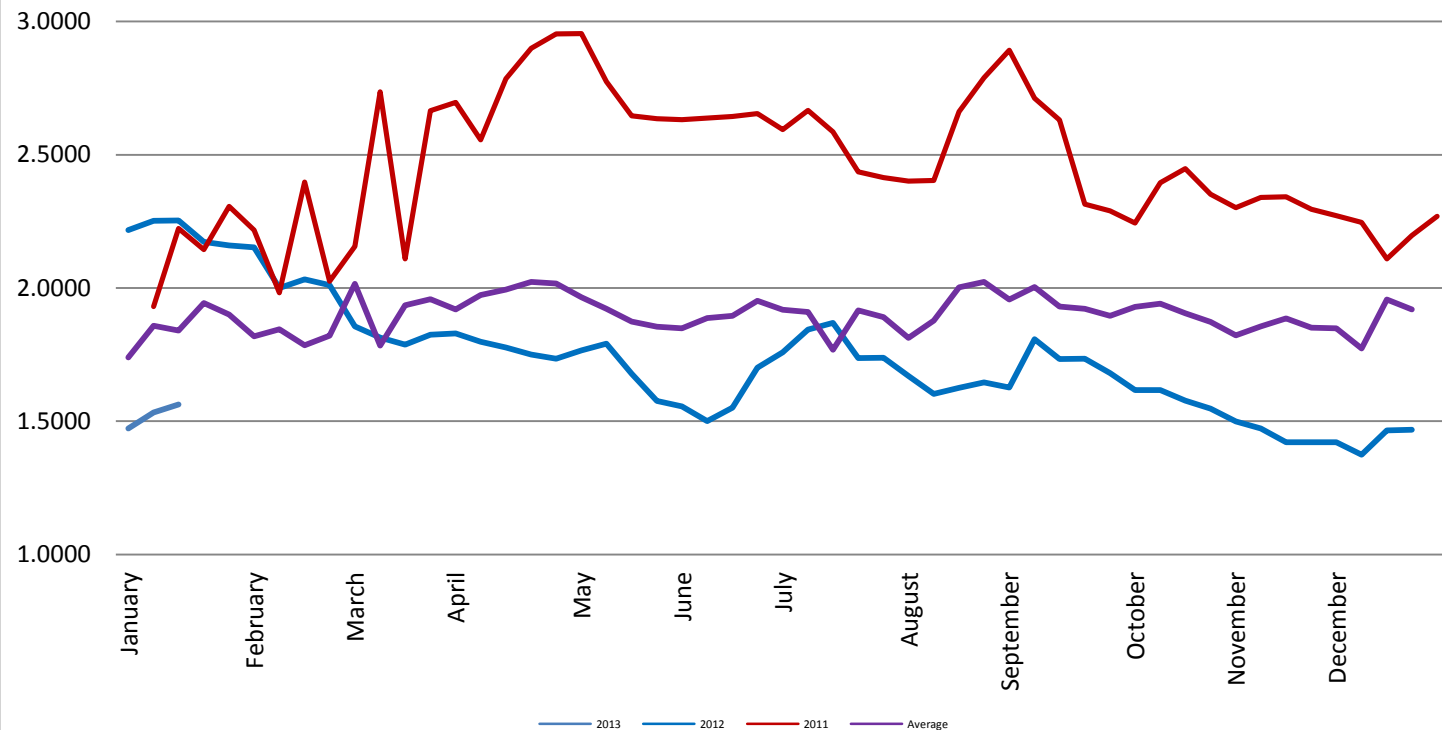


Wheat - CBOT Weekly Average Price - Dollars / Bushel

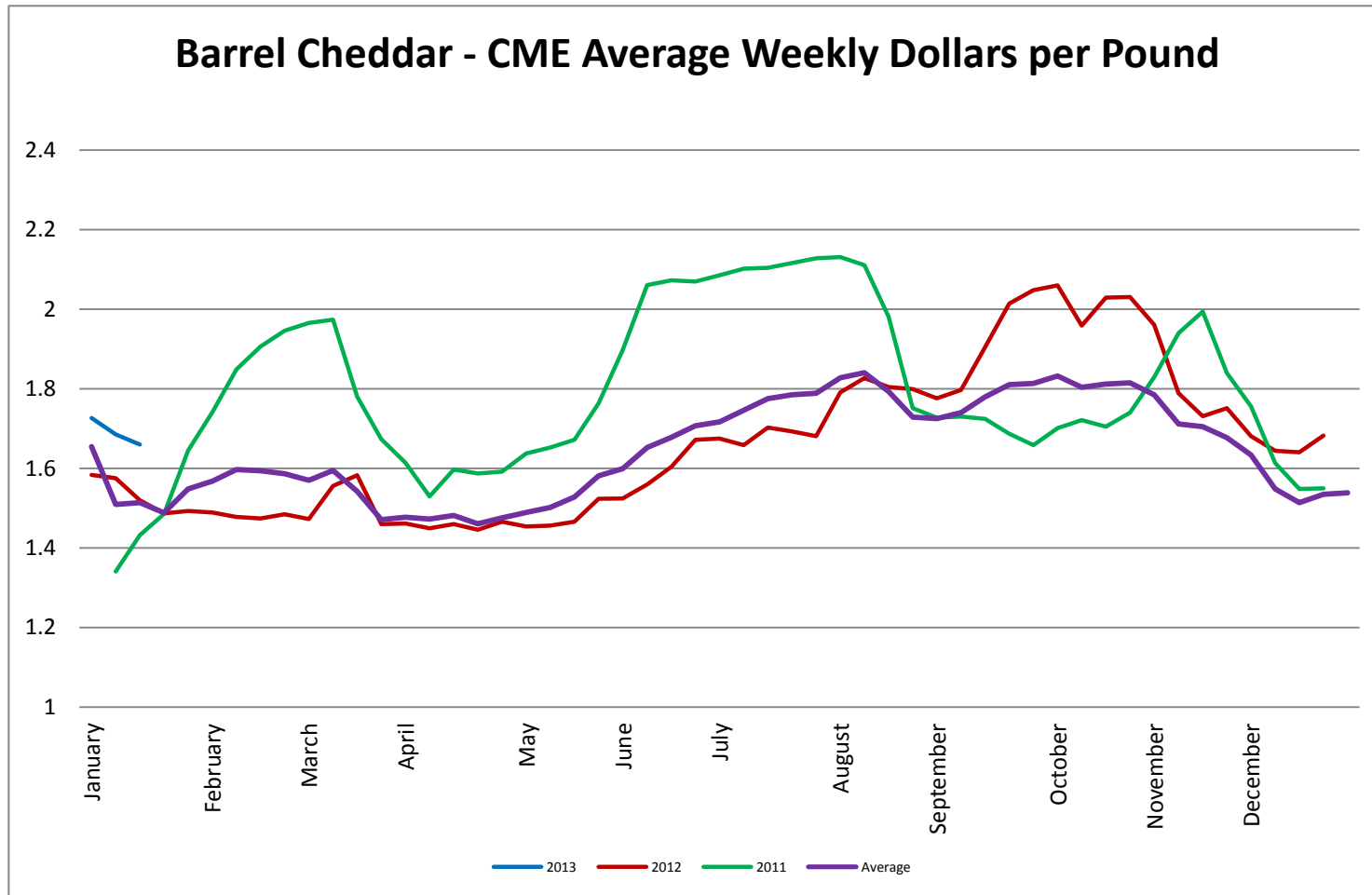


Coffee - (KC) NYBOT Average Weekly Price - Dollars per Pound

Coffee - (KC) NYBOT Average Weekly Price
Dollars / Pound

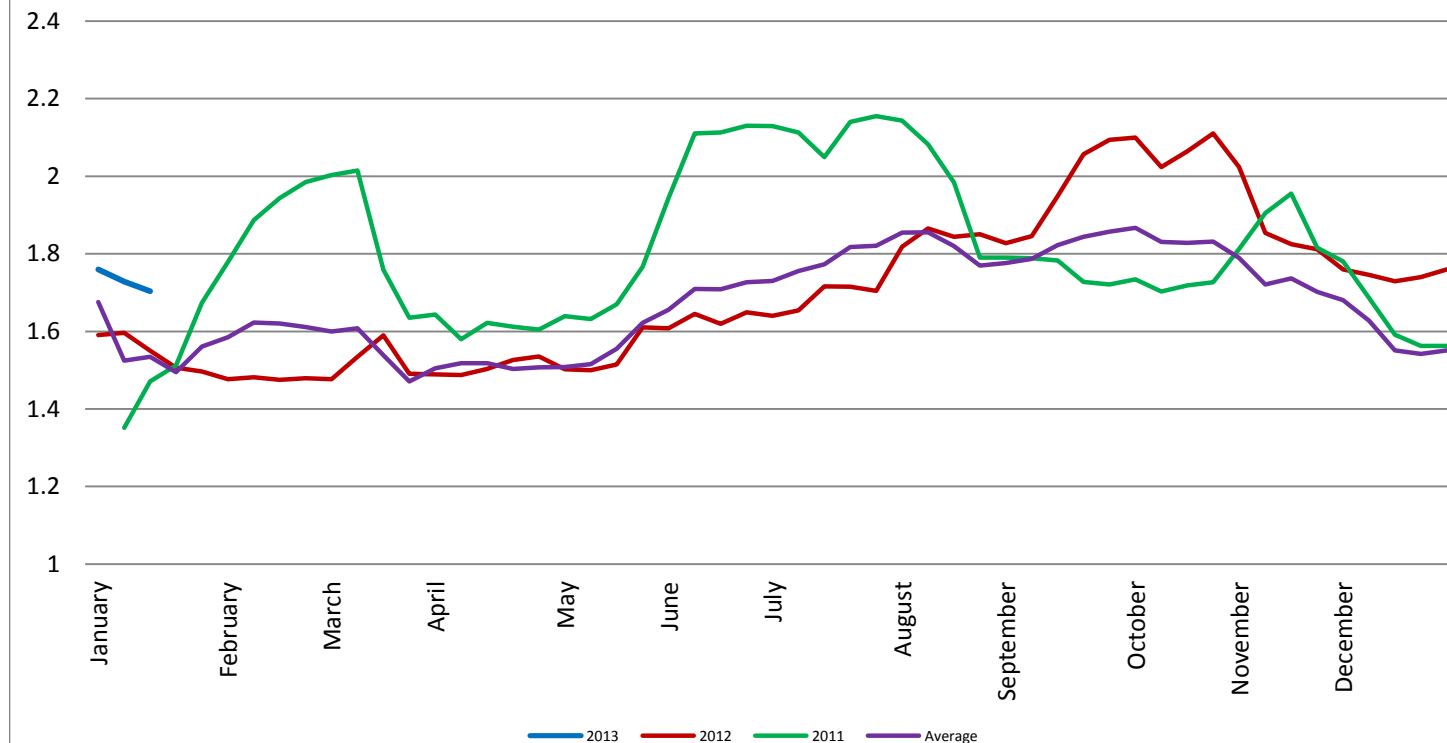


Barrel Cheddar - CME Average Weekly Price / Pound

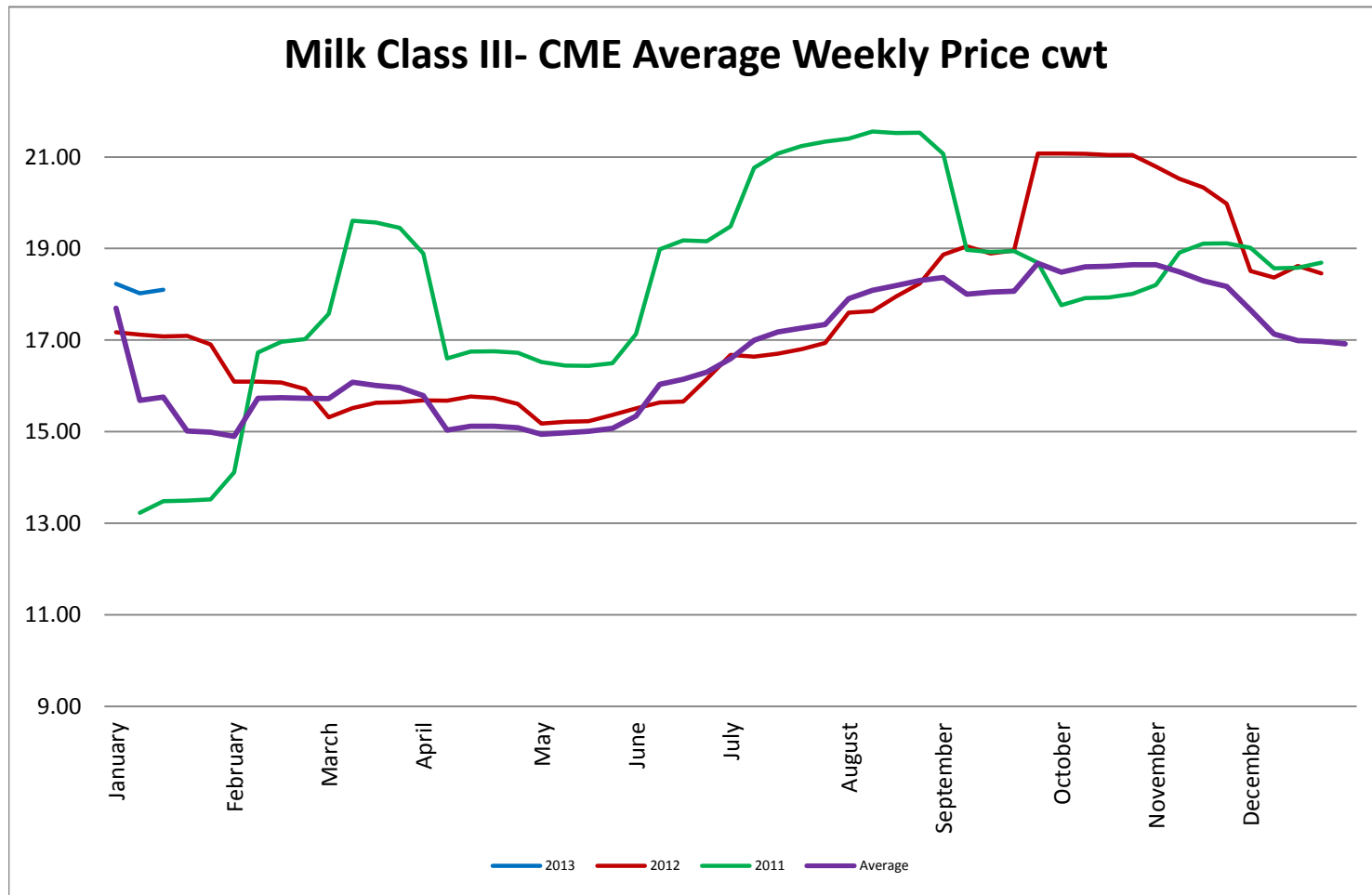


40 LB Block Cheddar - CME Average Weekly Price / Pound

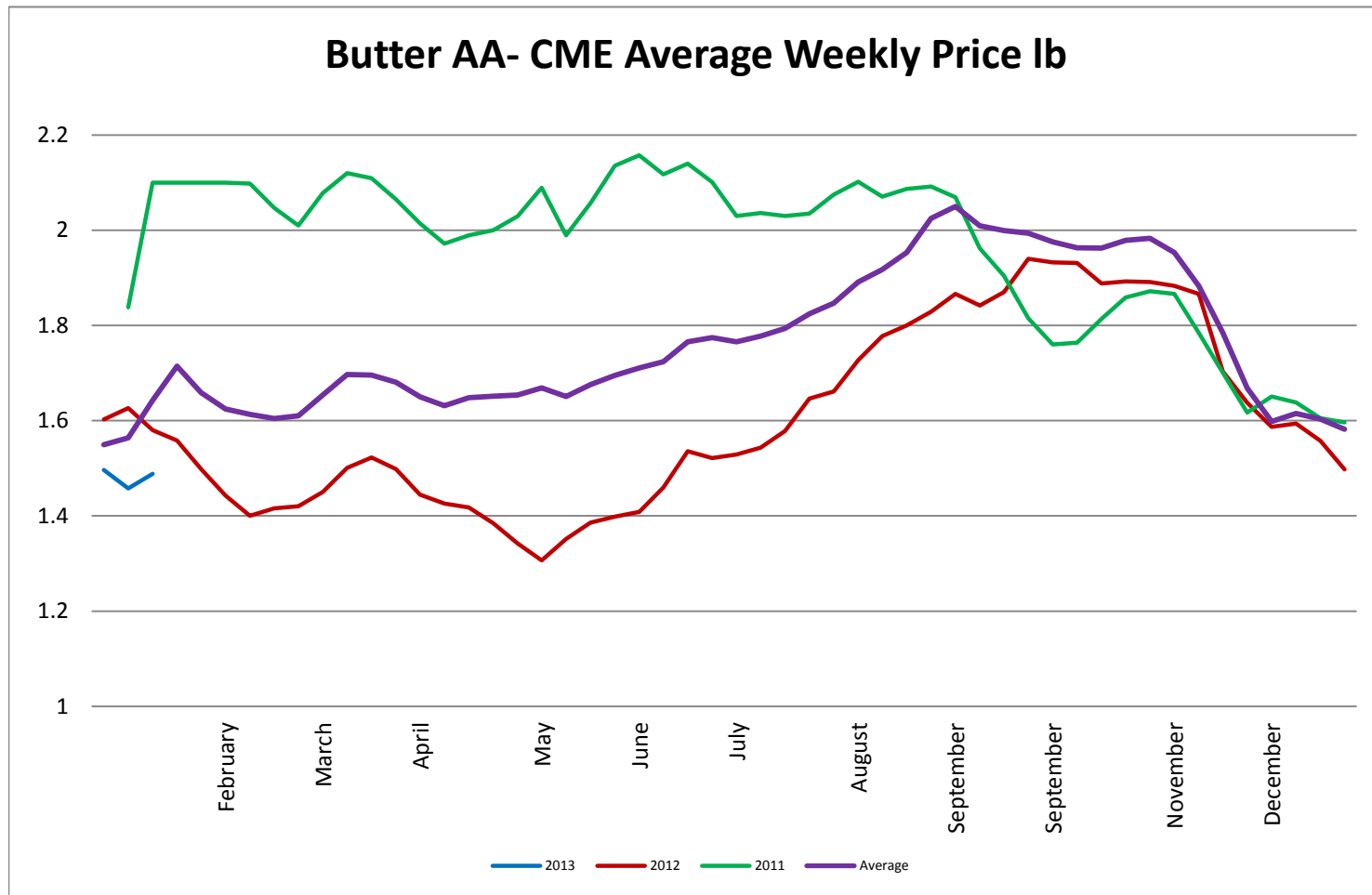
Block Cheddar 40 #- CME Average Weekly Dollars per Pound



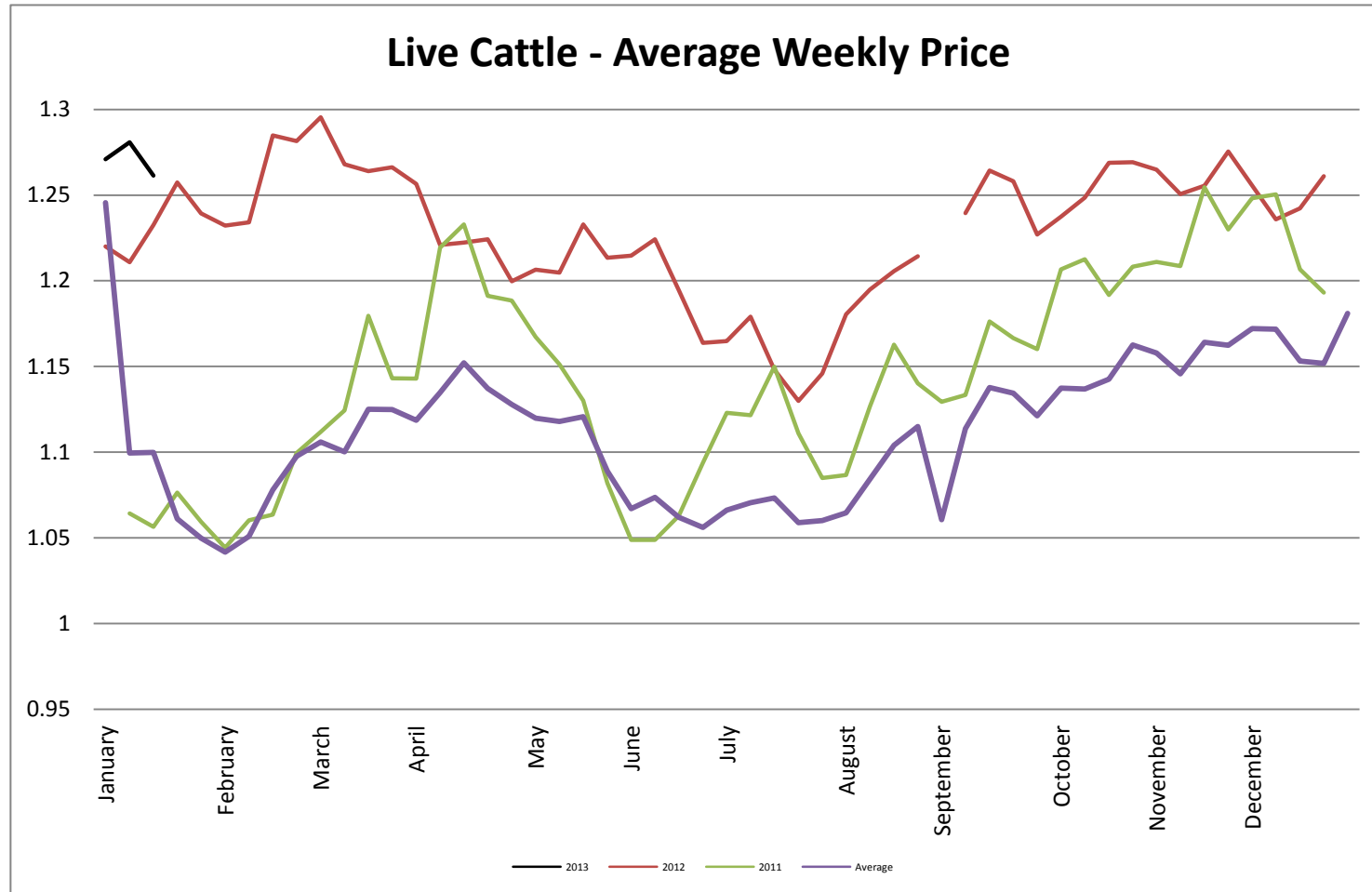
Milk Class III - CME Average Weekly Price CWT



Butter AA - CME Average Weekly Price lb



Live Cattle - Average Weekly Price USDA - 6 State Average

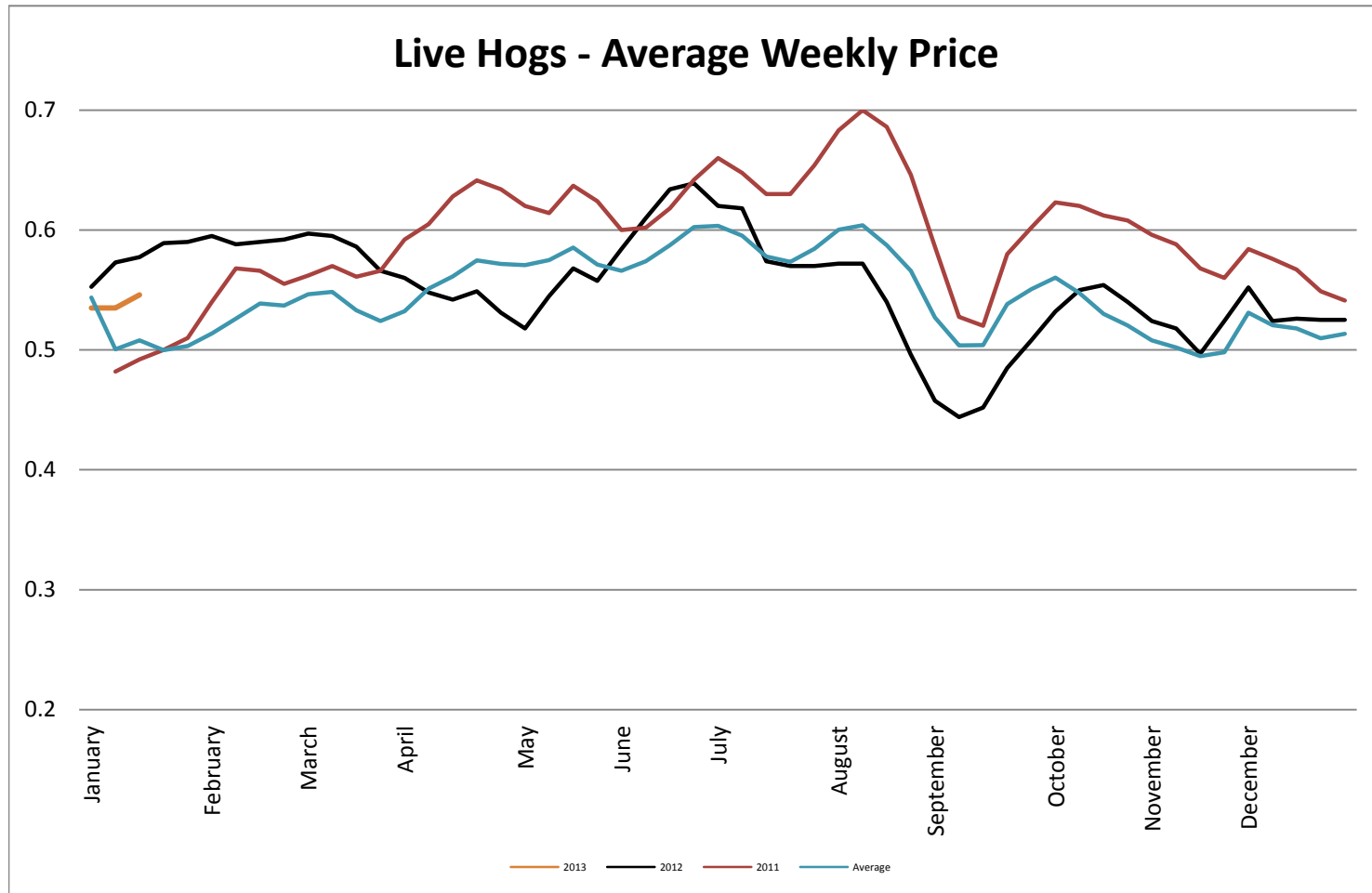


USDA Coarse ground 81% Steer & Heifer Source

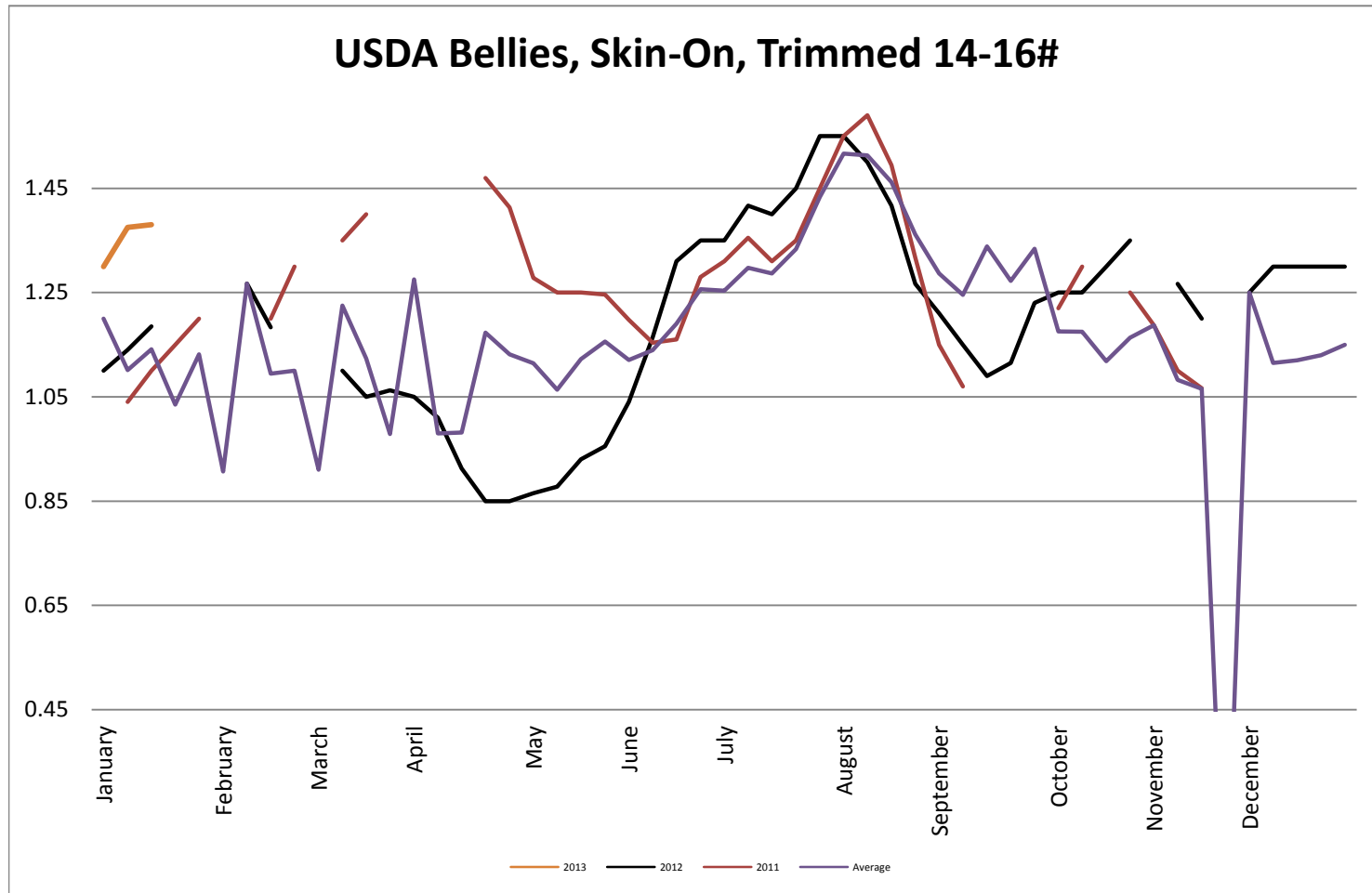
USDA Coarse ground 81% Steer & Heifer Source



USDA Live Hogs - Average Weekly Price

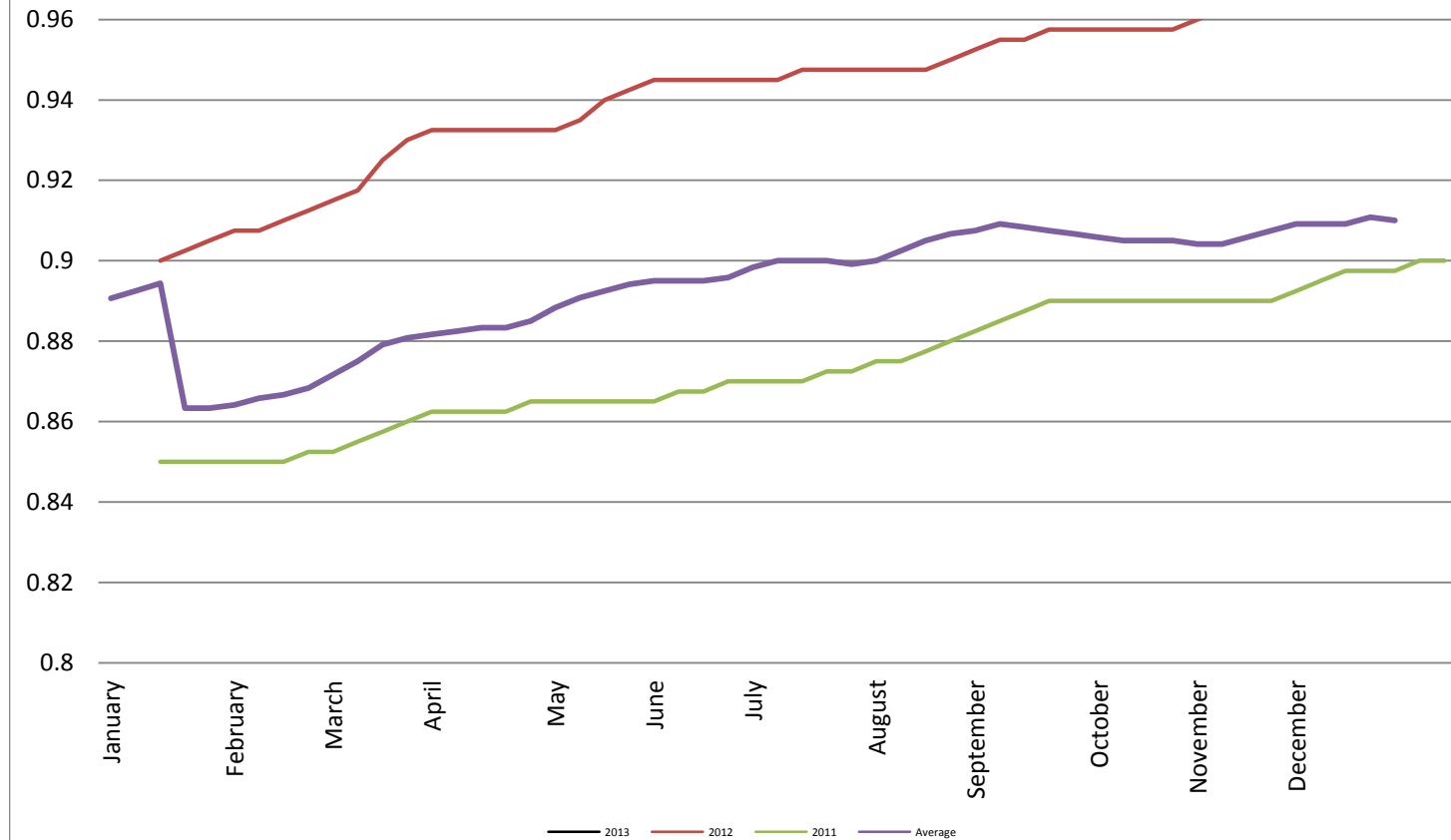


USDA Bellies, Skin-On, Trimmed 14-16#

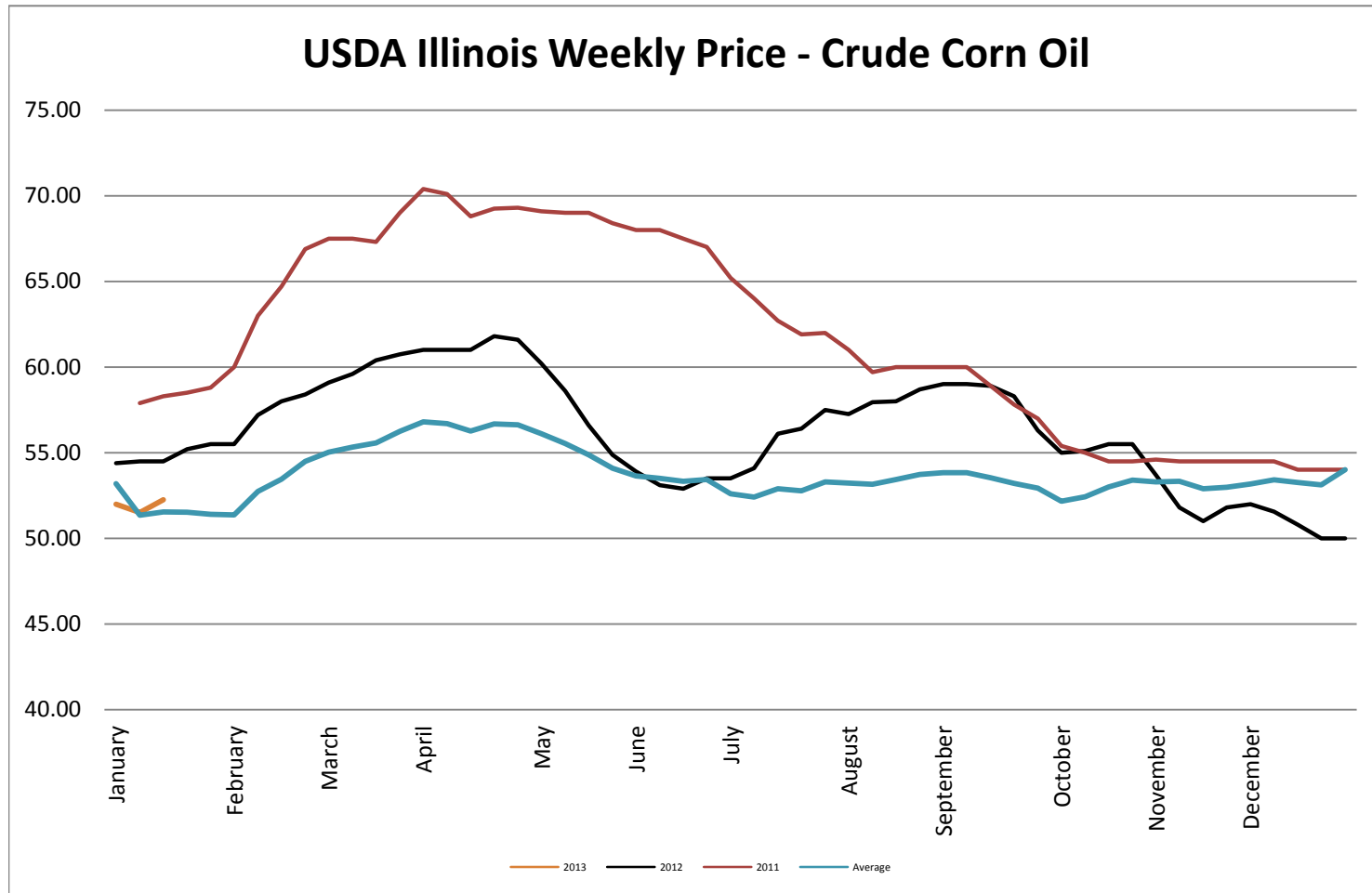


Georgia Dock Chicken - Final Weekly Price

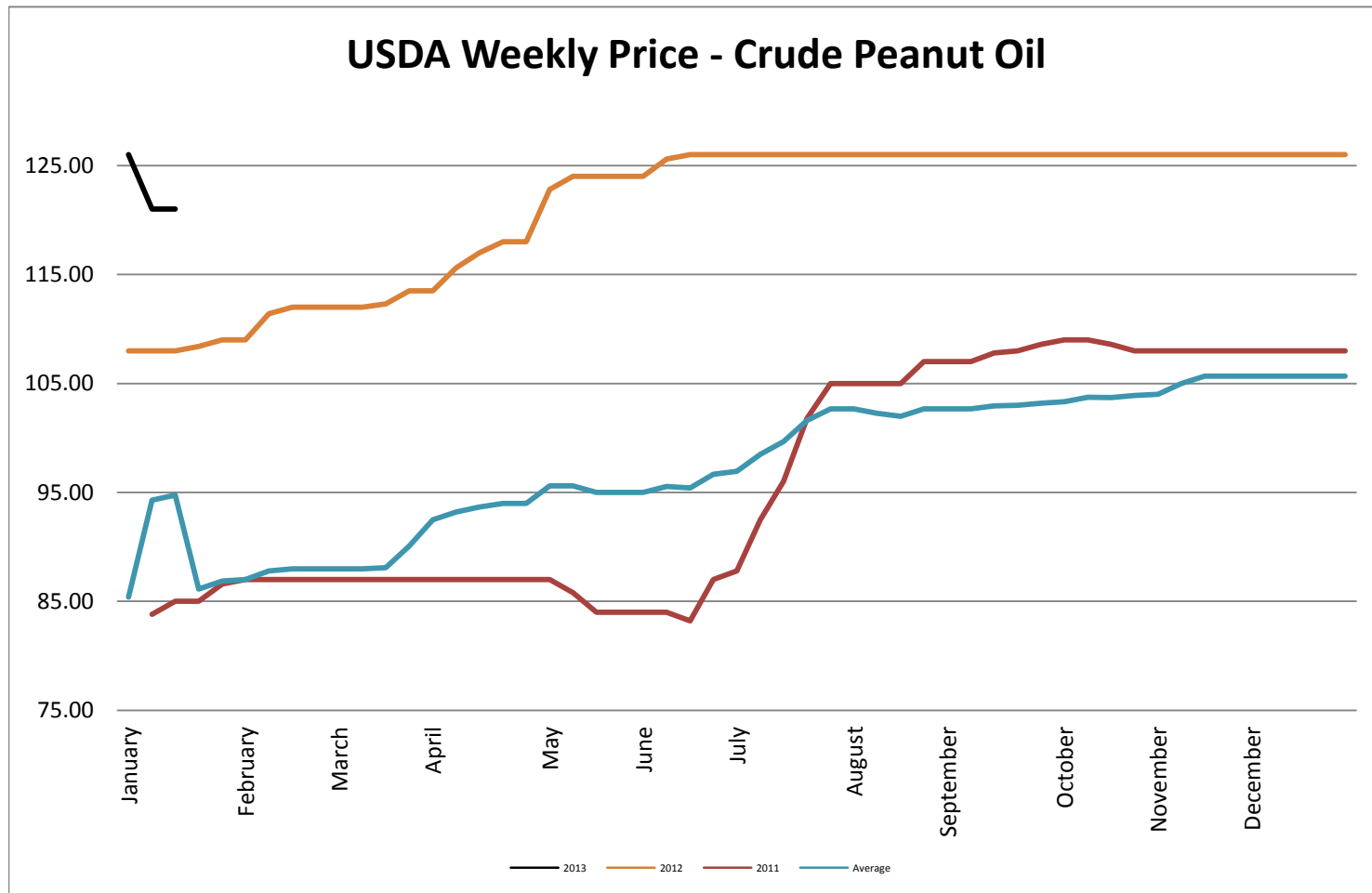
Georgia Dock Chicken Whole Bird - Final Weekly Price



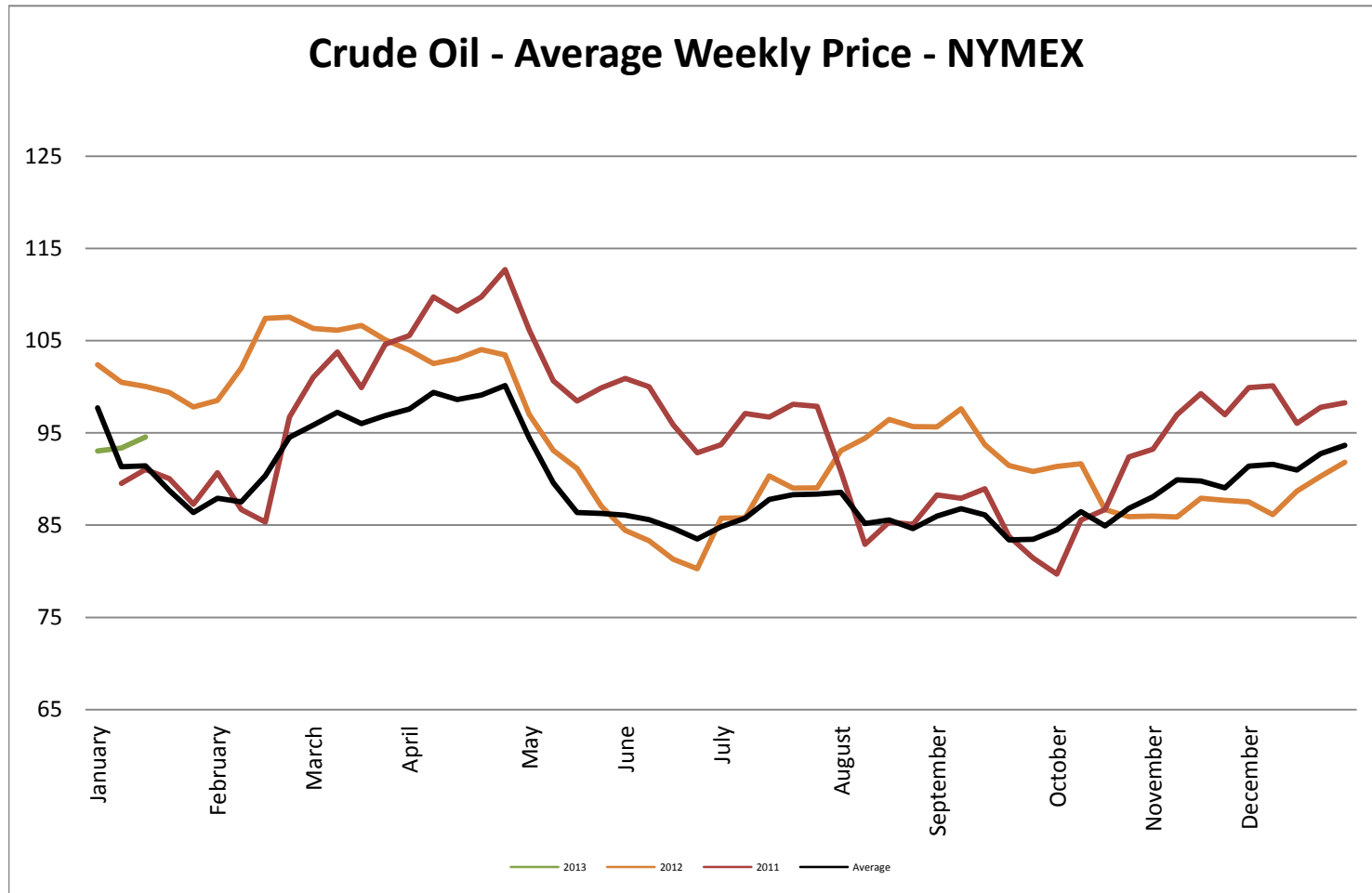
USDA Weekly Price - Crude Corn Oil



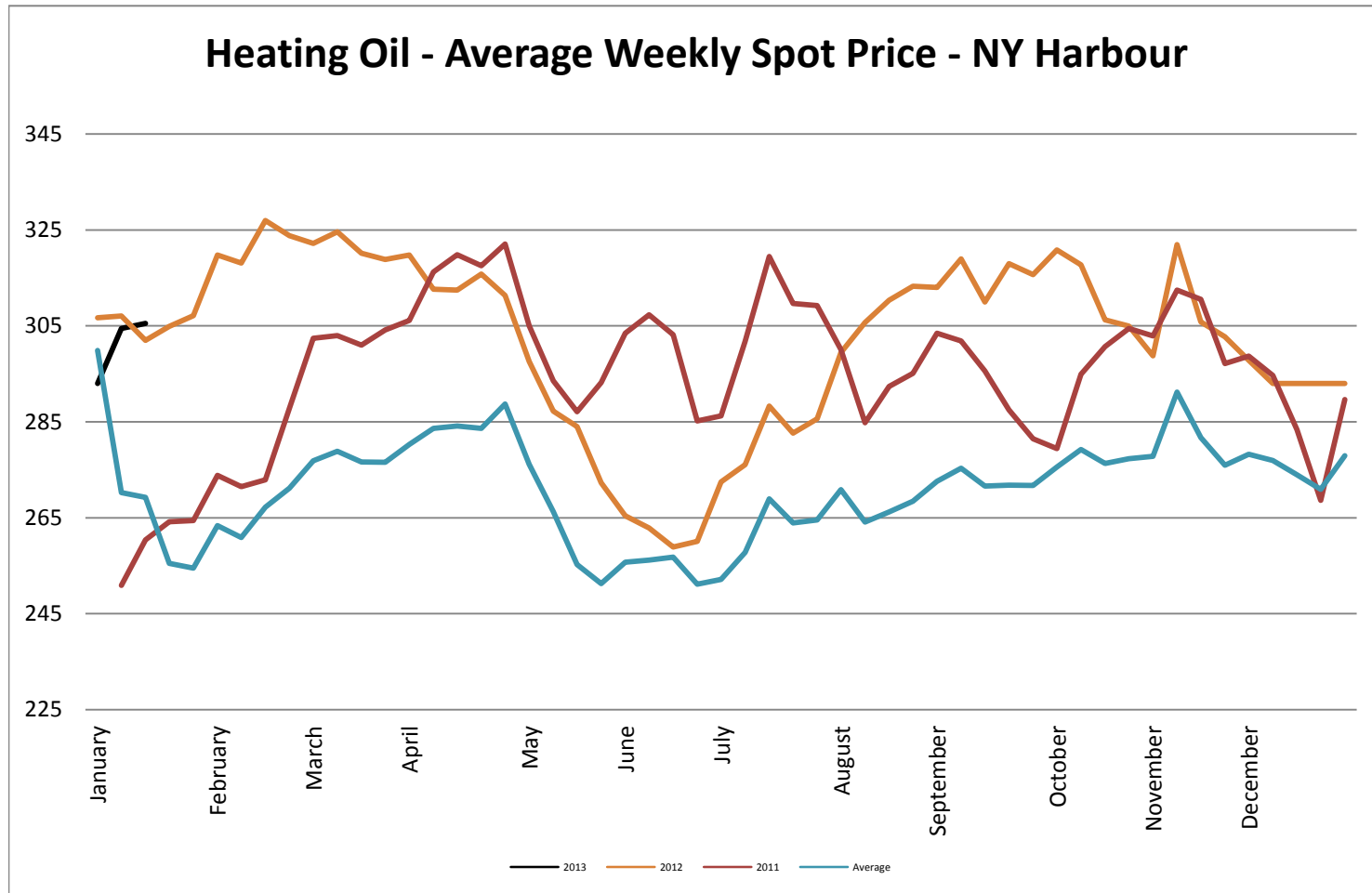
USDA Weekly Price - Crude Peanut Oil



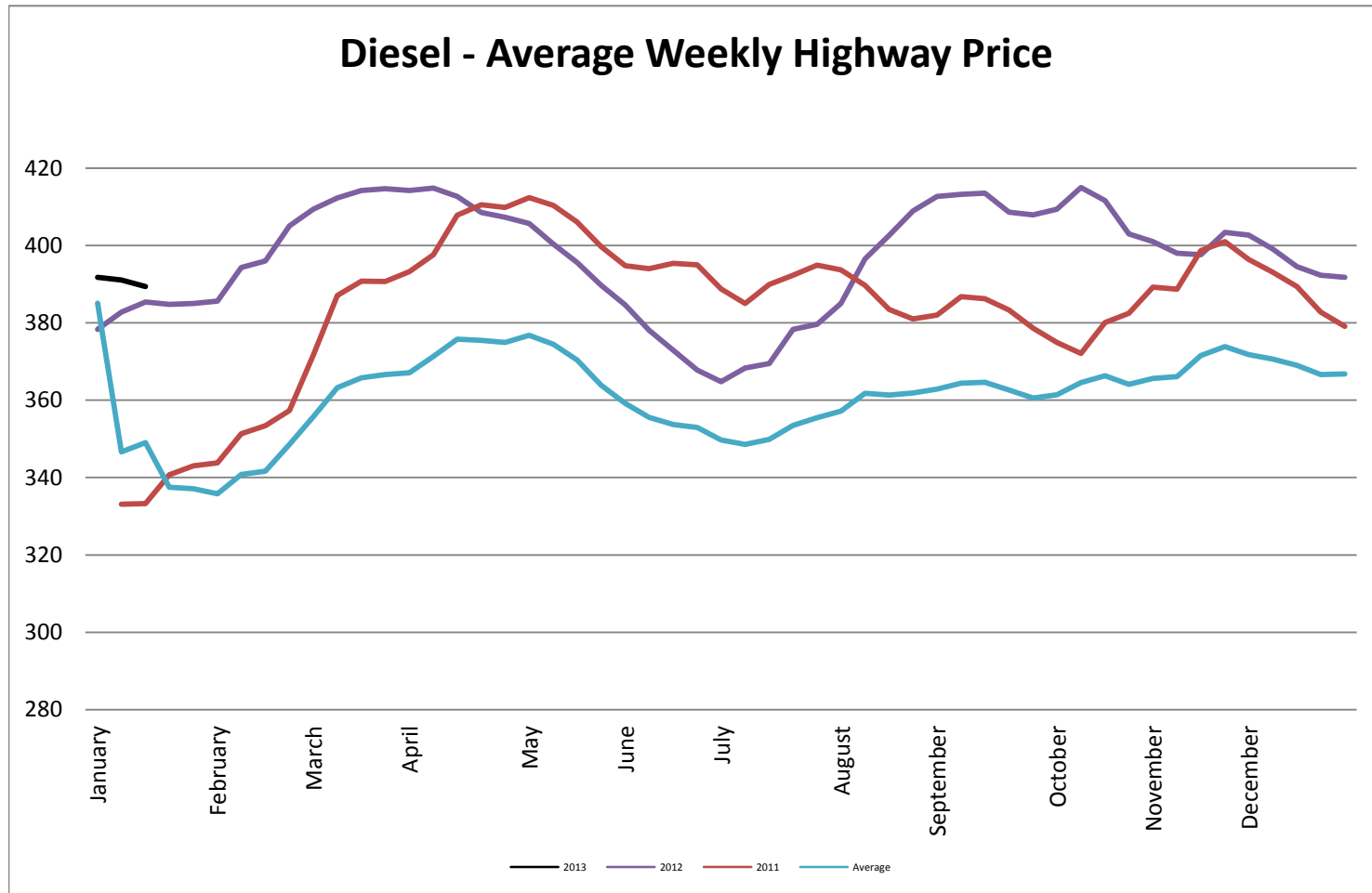
Crude Oil - Average Weekly Price - NYMEX



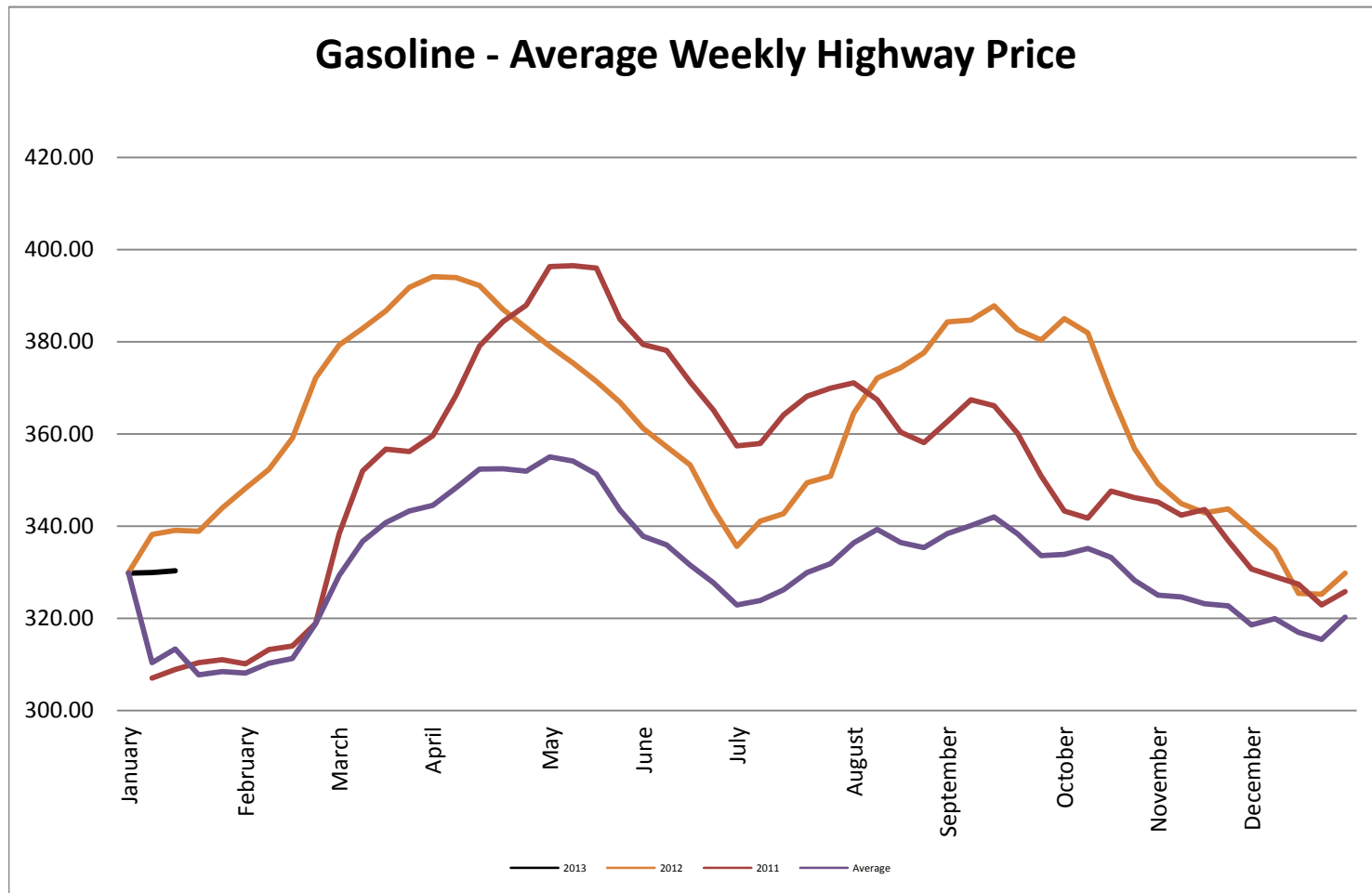
Heating Oil - Average Weekly Spot Price - NY Harbour



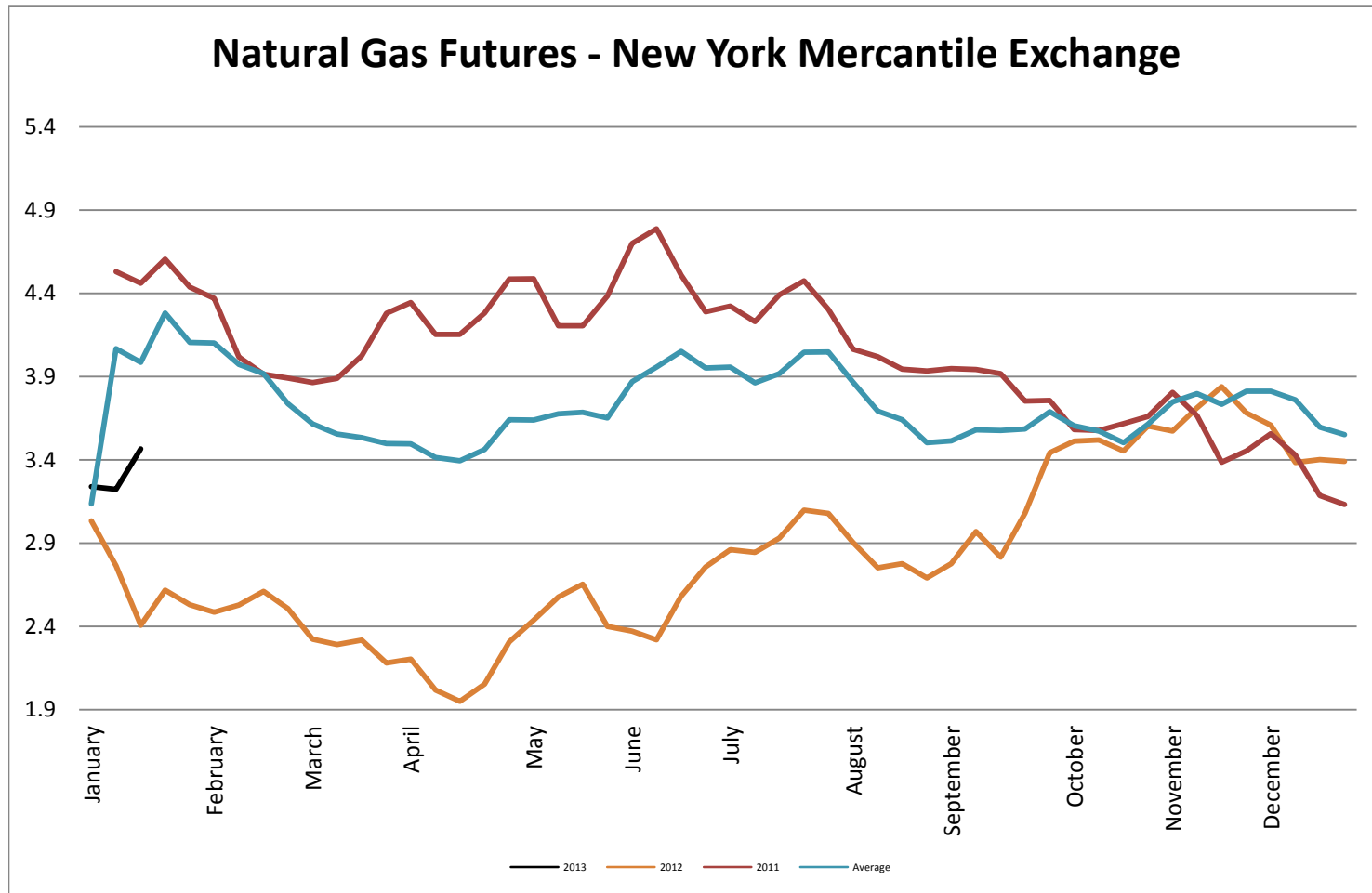
Diesel - Average Weekly Highway Price



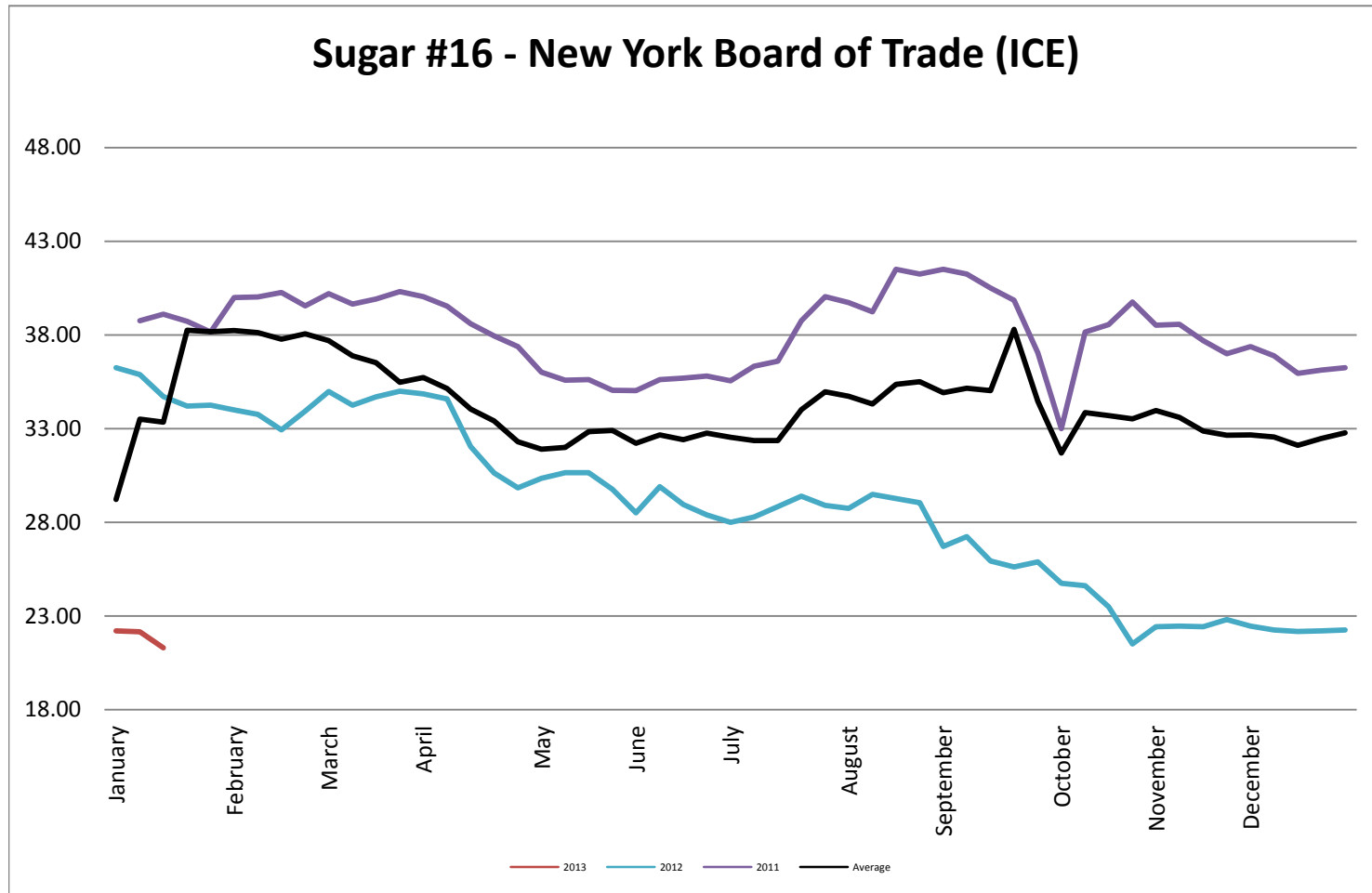
Gasoline Unleaded - Average Weekly Highway Price



Natural Gas Futures - New York Mercantile Exchange



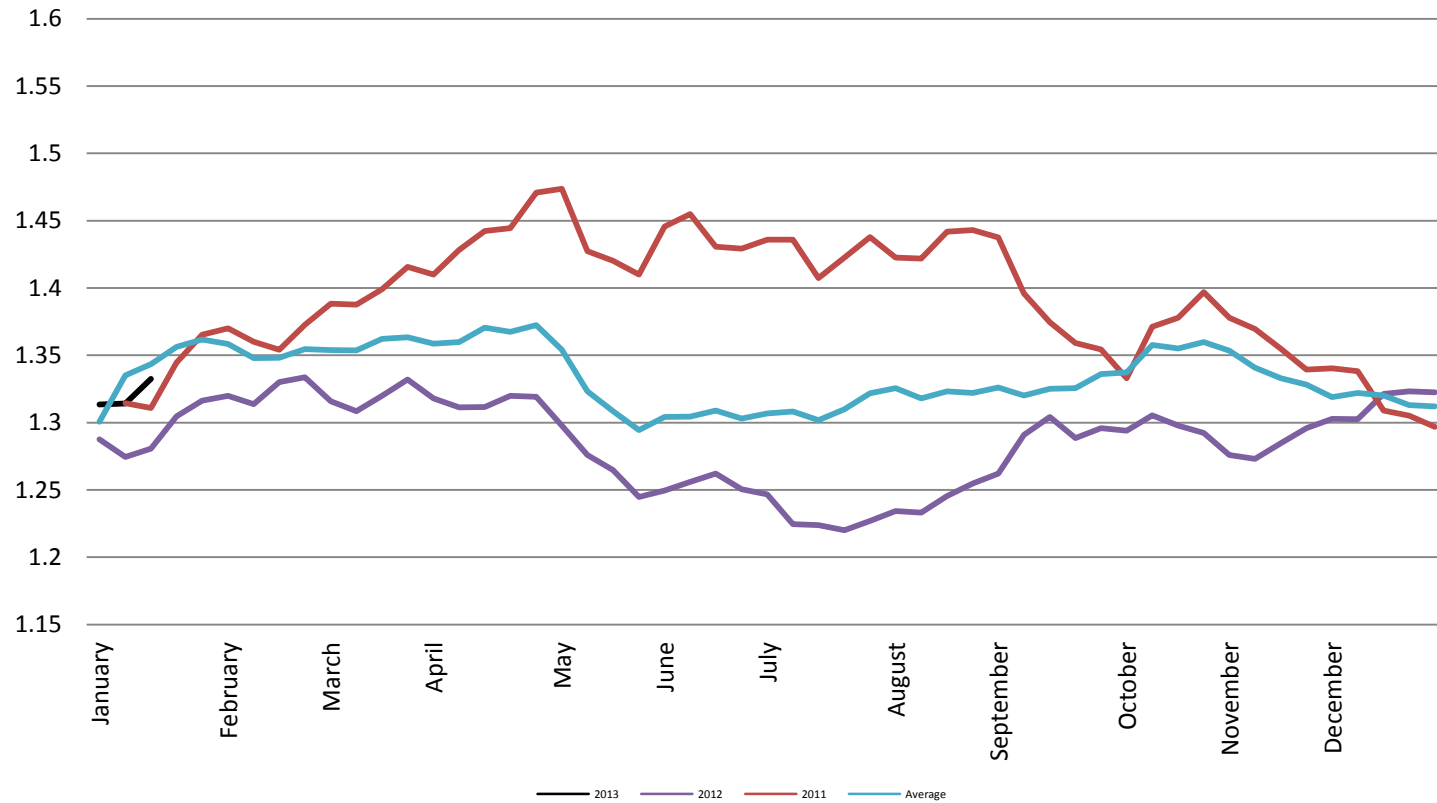
Sugar #16 - New York Board of Trade (ICE)



Foreign Exchange Rate - Euro, EMU Members

Foreign Exchange Rate - Euro, EMU Members

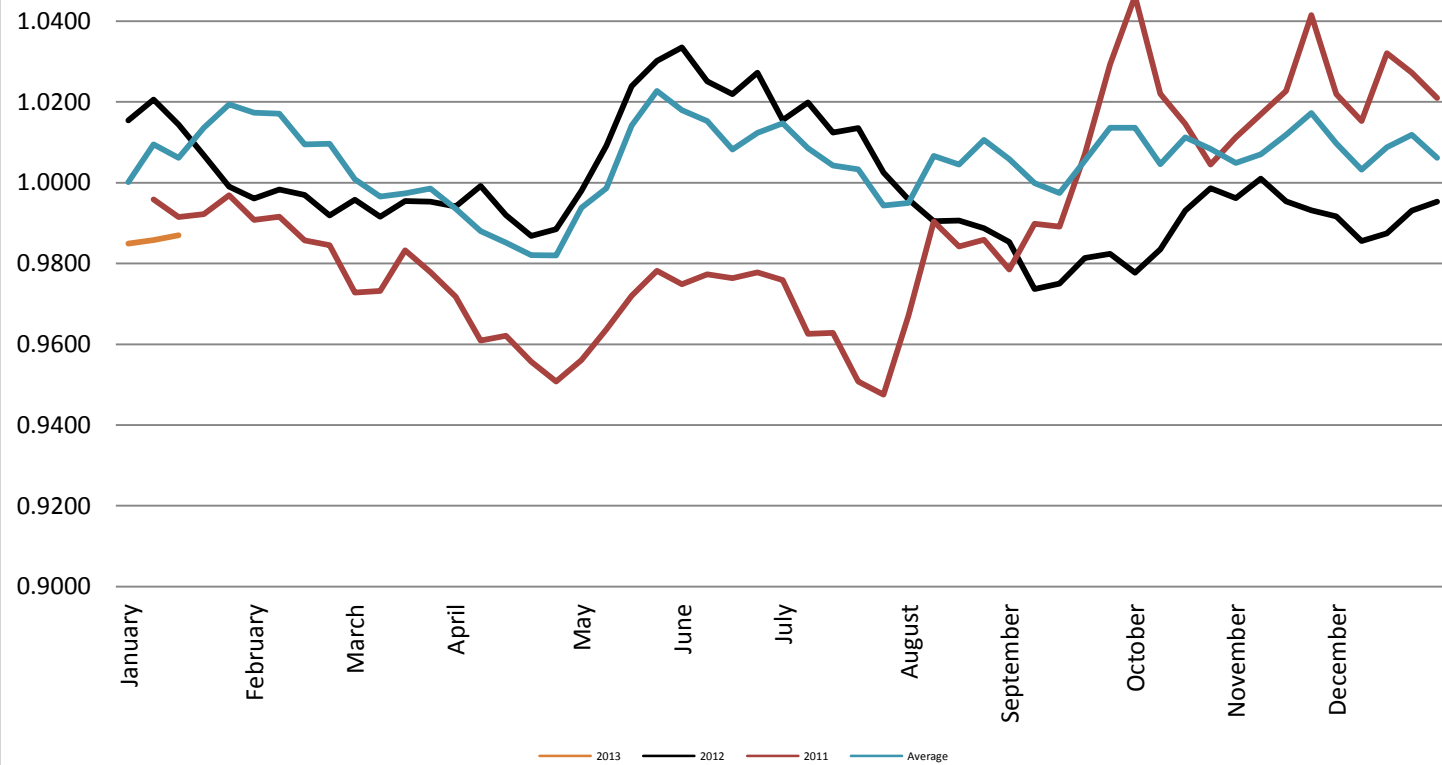
Federal Reserve Bank of New York



Foreign Exchange Rate - Canadian Dollar

Foreign Exchange Rate - Canadian Dollar

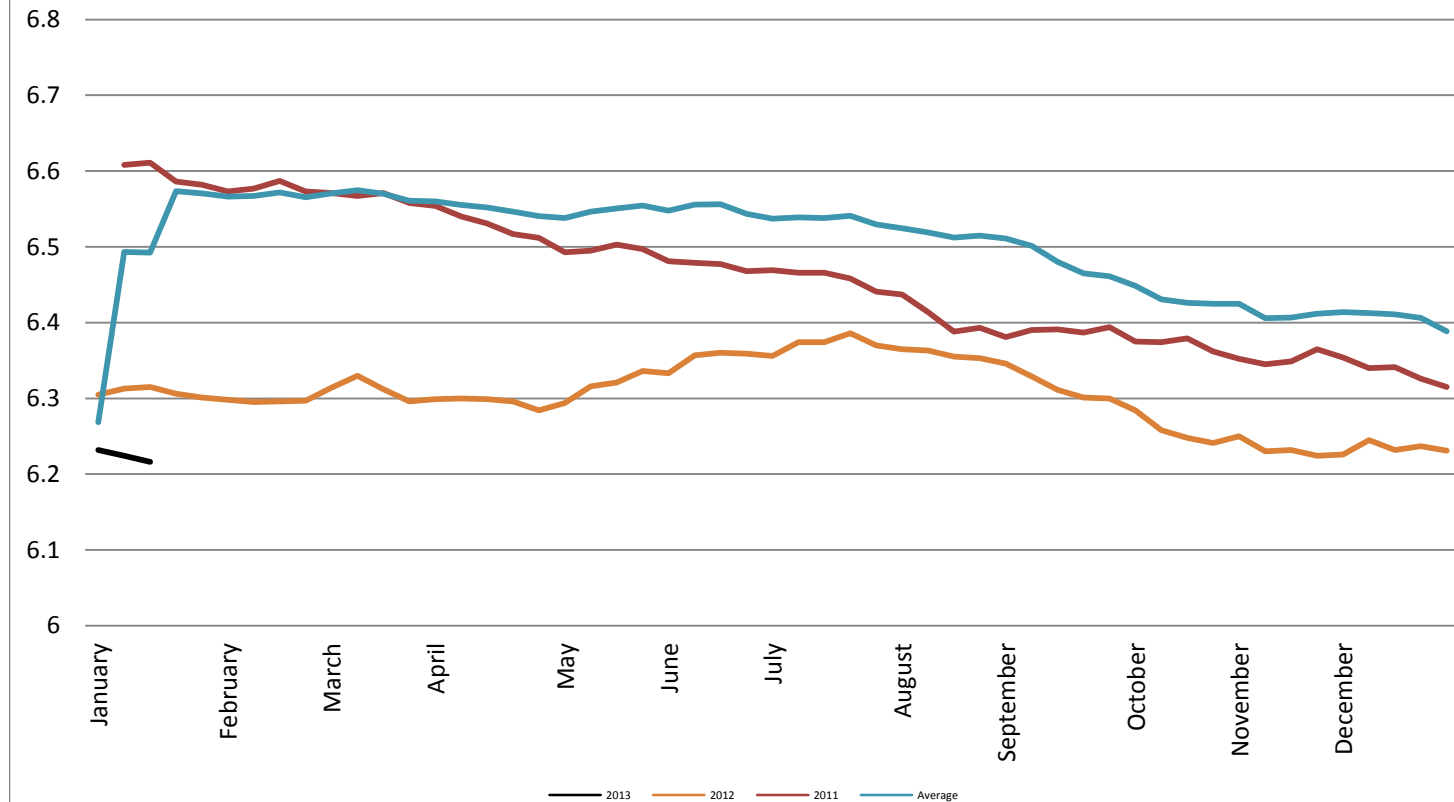
Federal Reserve Bank of New York



Foreign Exchange Rate - Chinese Yuan

Foreign Exchange Rate - Chinese Yuan

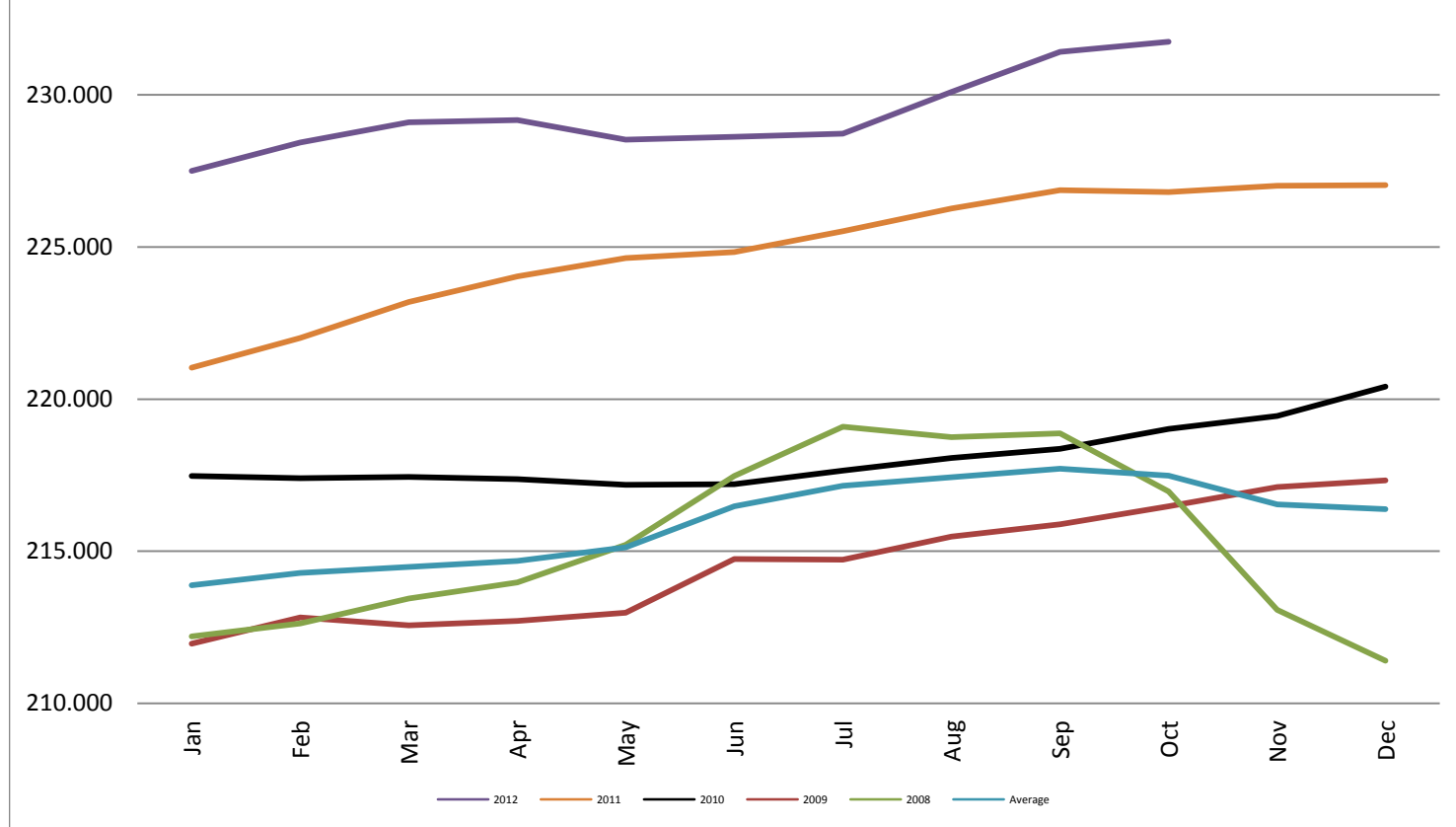
Federal Reserve Bank of New York



Consumer Price Index - Monthly

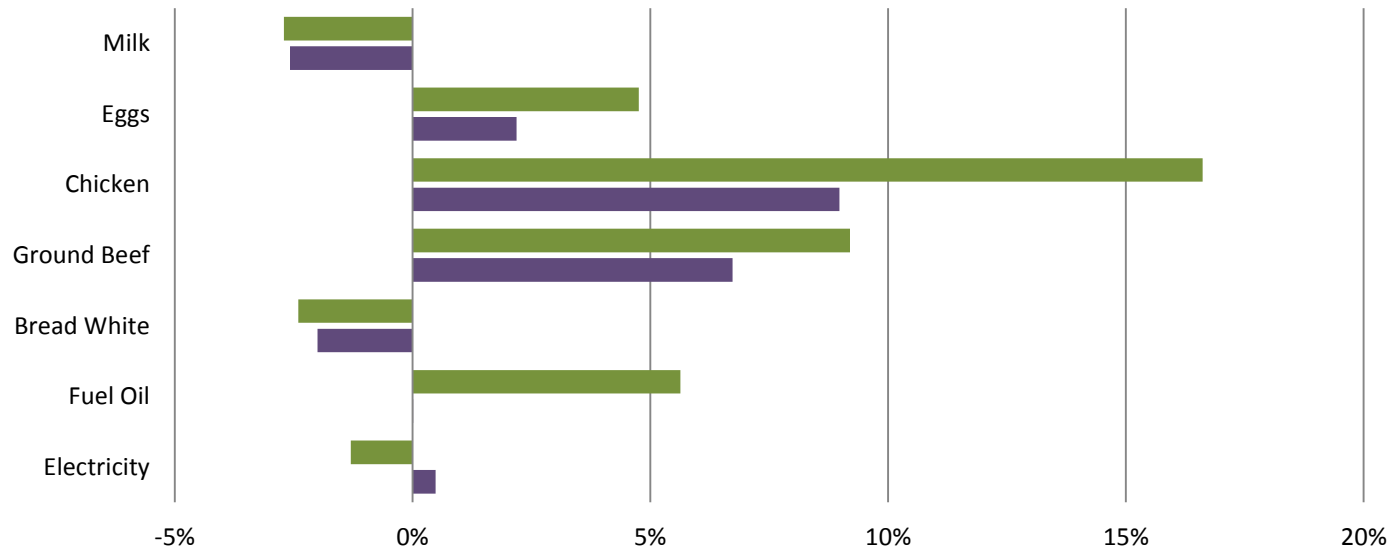
Consumer Price Index - Monthly

Bureau of Labor and Statistics



Consumer Price Index- Growth Percentage

Bureau of Labor & Standards



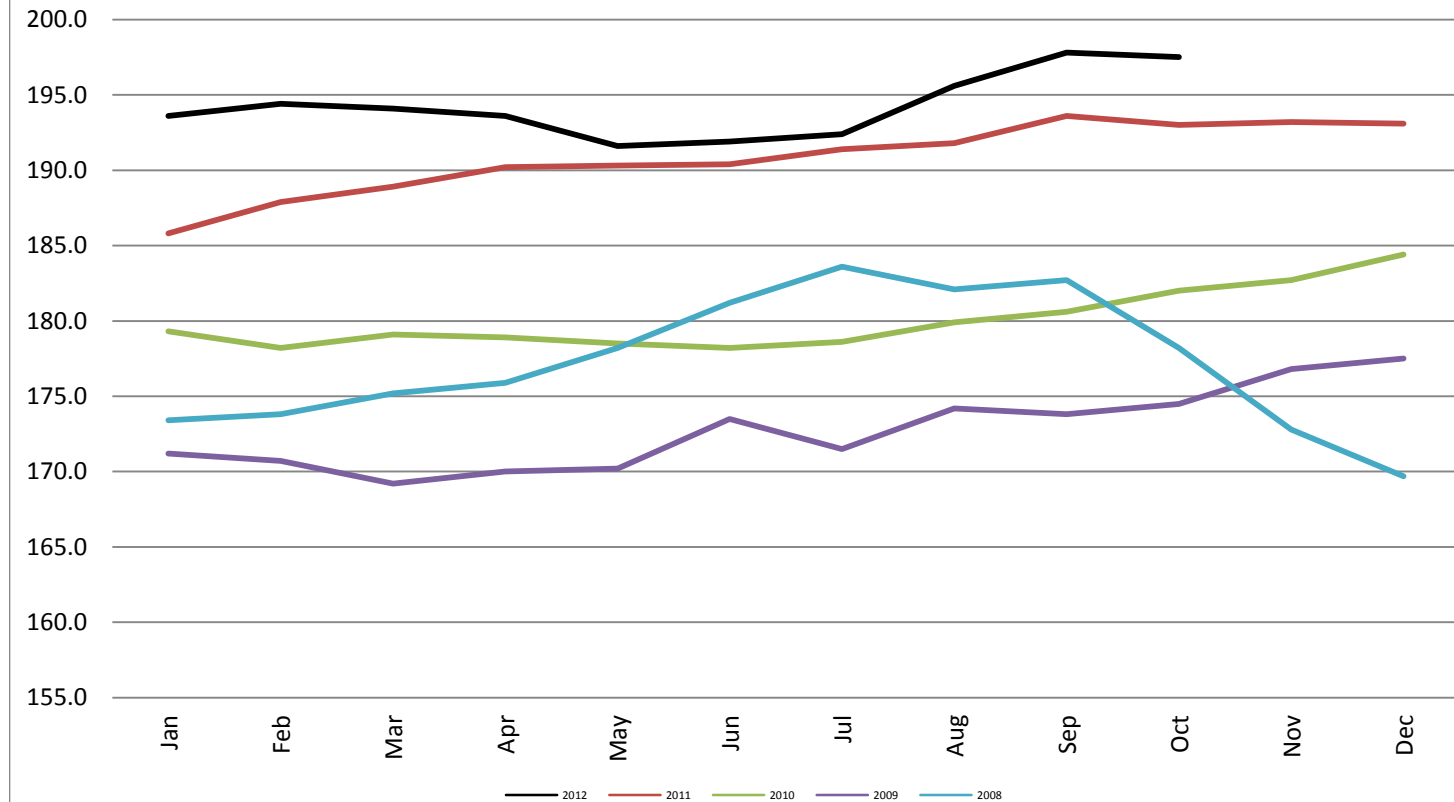
	Electricity	Fuel Oil	Bread White	Ground Beef	Chicken	Eggs	Milk
OCT 12 vs. OCT 11	-0.012987588	0.056287754	-0.024021963	0.091982598	0.166158537	0.047568145	-0.027056875
YTD	0.004839689	0.000138365	-0.019981541	0.067273583	0.089726381	0.021870585	-0.025810215

■ OCT 12 vs. OCT 11 ■ YTD

Producer Price Index - Monthly

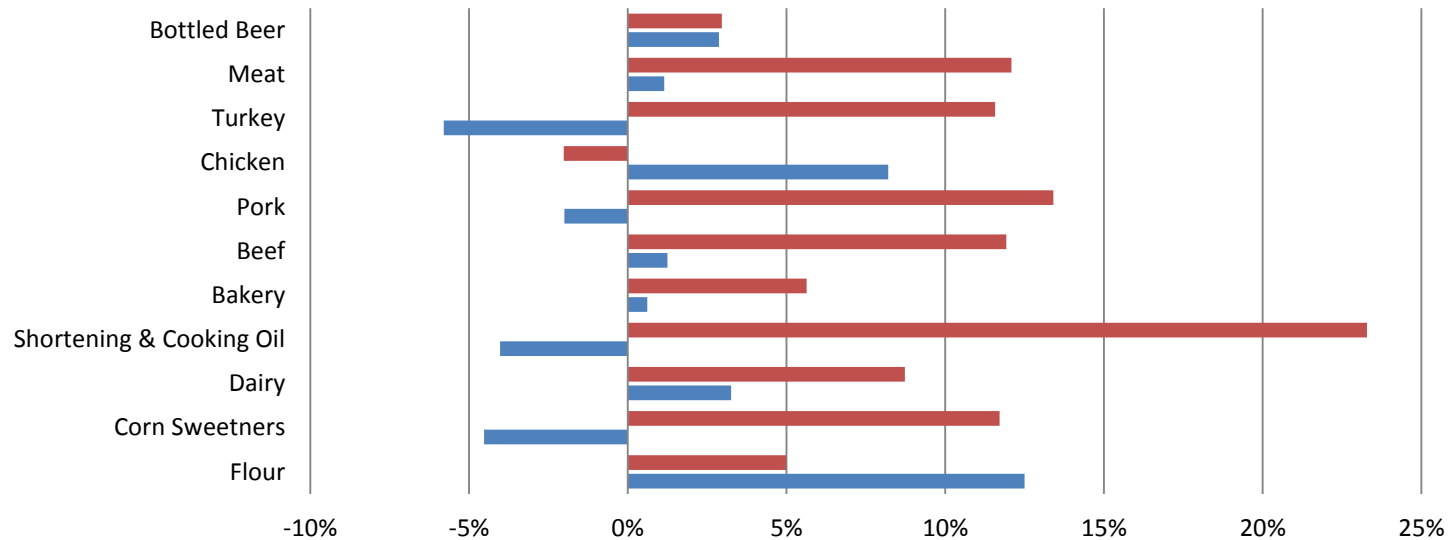
Producer Price Index - Monthly

Bureau of Labor and Statistics



PPI Commodities - Growth Percentage

Bureau of Labor & Standards



	Flour	Corn Sweetners	Dairy	Shortening & Cooking Oil	Bakery	Beef	Pork	Chicken	Turkey	Meat	Bottled Beer
OCT 12 VS. OCT 11	0.049847	0.117083	0.087288	0.232808	0.056349	0.119274	0.134013	0.020148	0.115690	0.120879	0.029615
YTD	0.124941	0.045281	0.032520	0.040211	0.006165	0.012509	0.019938	0.082036	0.057999	0.011487	0.028693

OCT 12 VS. OCT 11 YTD