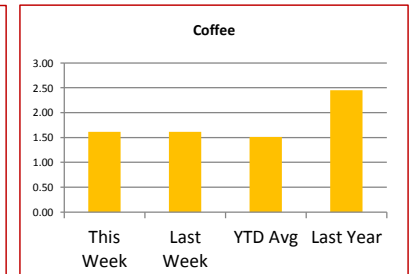
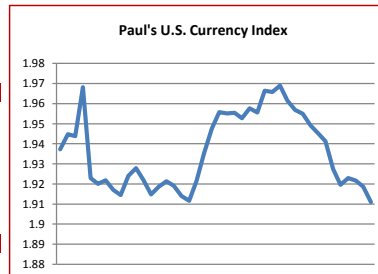
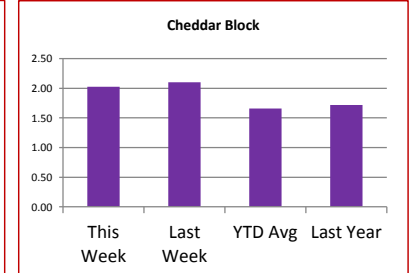
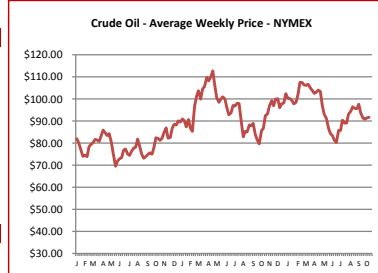
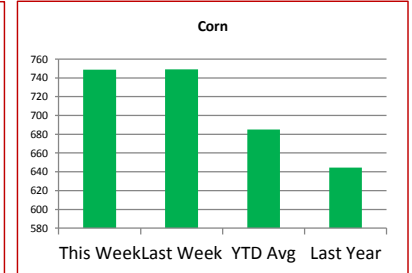
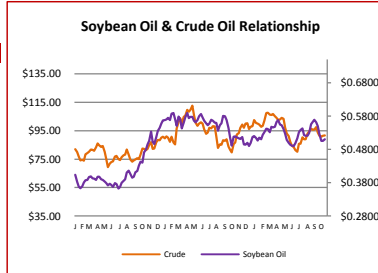


Key Commodity Report Weekly

October 22, 2012

Commodity Activity - Weekly Average

10/15/2012	This Week	Last Week	YTD Avg	Last Year	vs. Last Week	vs. Last Year
CME Group						
Corn	↓	748.65	748.95	684.87	644.35	-0.04% 16.19%
Soybean	↓	1515.1	1539.1	1462.2	1233.2	-1.56% 22.86%
Soy Meal	↓	458.14	474.92	424.40	320.68	-3.53% 42.87%
Soybean Oil	↑	0.5108	0.5060	0.5295	0.5194	0.95% -1.66%
Rough Rice	↓	15.02	15.03	15.11	16.41	-0.03% -8.44%
Wheat	↓	858.70	867.55	726.51	626.35	-1.02% 37.10%
Cheddar Barrel	↓	1.959	2.060	1.624	1.705	-4.93% 14.87%
Cheddar Block	↓	2.024	2.100	1.658	1.719	-3.62% 17.78%
Milk Class III	↓	21.07	21.07	16.86	17.93	-0.03% 17.48%
Butter AA	↓	1.888	1.931	1.578	1.859	-2.23% 1.59%
Source: CME Group						
USDA Weekly Prices						
Live Cattle	↑	1.249	1.238	1.221	1.192	0.90% 4.77%
Course Ground Beef	↑	2.140	2.135	2.128	1.738	0.23% 23.17%
Live Hog	↑	0.5500	0.5320	0.5604	0.6120	3.38% -10.13%
Pork Bellies	↔	1.25	1.25	1.18	1.30	0.00% -3.85%
Chicken Whole (GA Dock)	↔	0.9575	0.9575	0.9360	0.8900	0.00% 7.58%
Crude Corn Oil	↓	54.50	55.00	57.12	54.50	-0.91% 0.00%
Crude Peanut Oil	↔	126.00	126.00	119.49	108.60	0.00% 16.02%
Source: USDA						
NYMEX Futures & Retail						
Crude Oil	↑	91.64	91.38	95.92	86.71	0.29% 5.69%
Heating Oil No.2 Spot	↔	320.85	320.85	307.00	300.68	0.00% 6.71%
On Highway Diesel	↑	415.00	409.40	395.65	380.10	1.37% 9.18%
On Highway Gasoline	↓	381.90	385.00	366.06	347.60	-0.81% 9.87%
Natural Gas	↑	3.519	3.512	2.645	3.617	0.20% -2.71%
Source: New York Mercantile Exchange						
Federal Reserve						
*Euro	↑	1.3054	1.2939	1.2759	1.3780	0.89% -5.27%
*British Pound	↑	1.6107	1.6036	1.5520	1.5801	0.44% 1.94%
Canadian Dollar	↑	0.9835	0.9777	1.0014	1.0146	0.59% -3.07%
Chinese Yuan	↓	6.258	6.284	6.323	6.379	-0.41% -1.90%
Swiss Frank	↓	0.926	0.935	0.940	0.895	-0.95% 3.45%
Source: Federal Reserve Bank of New York						
NYBOT Futures						
Sugar 16	↓	23.49	24.61	36.41	38.55	-4.55% -39.07%
Coffee	↓	1.6165	1.6170	1.5125	2.4485	-0.03% -33.98%
Source: Intercontinental Exchange						



Market Commentary

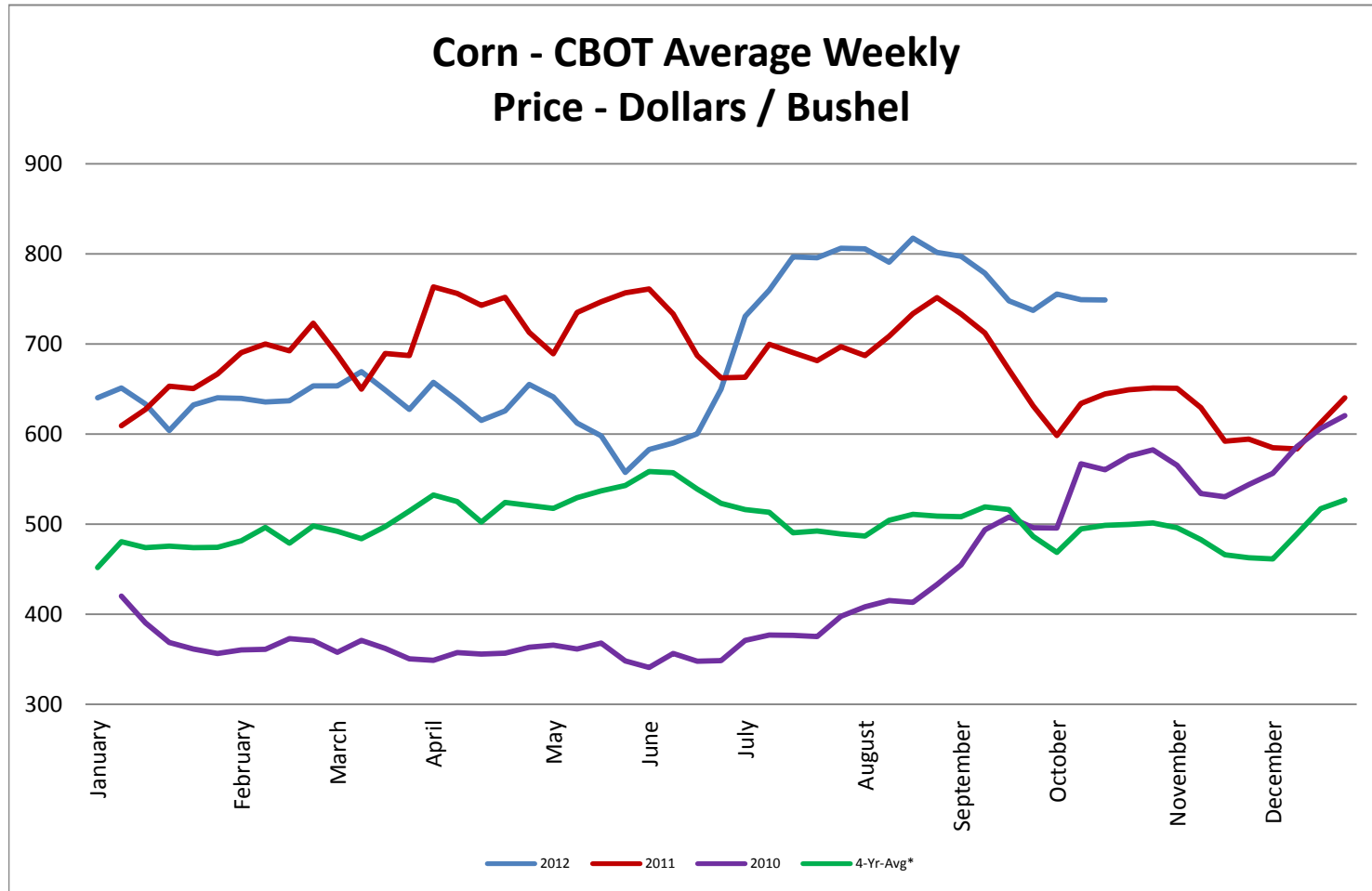
Commentary: The Fall harvest continues to move along, but is slowing as it is almost complete. The farmer is selling physical grains right now as he is making profit. U.S. Soybean farmers are the only game in town as we are the only ones with any beans. Exports for beans were very strong last week and it is expected that the demand may increase. China spoke for almost half of all exported beans last week. Wheat exports from the U.S. were down as Australia picked up pace as the number two exporter of wheat. European and Russian production of wheat is sharply lower due to drought conditions in that region. Corn exports have picked up in recent weeks, but it is reported that demand is down overall for corn which is odd during harvest time. China has good supplies of corn and with U.S. prices being high, Chinese exports have picked up. So, the futures prices have been very volatile and moving lower for most of last week. It seems that managed money has moved to the sidelines selling more and more. From a technical standpoint, it is probably time for the funds to jump back in and move the market higher. Also, the dollar is close to a low for the year. This is likely to aid in pushing futures higher.

Corn futures closed between \$7.37-1/4 and \$7.61-1/2 per bushel, ending the week at \$7.61-1/2.
 Soybean futures closed between \$14.92-1/2 and \$15.45-1/2, ending the week at \$15.34-1/2.
 Soybean meal futures closed between \$456.10 and \$463.80 per short ton, ending the week at 463.80.
 Soybean oil futures closed between \$0.5001 and \$0.5230 per pound, ending the week at \$0.5158.
 Wheat futures closed between \$8.48-1/4 and \$8.72-3/4 per bushel, ending the week at \$8.72-3/4.

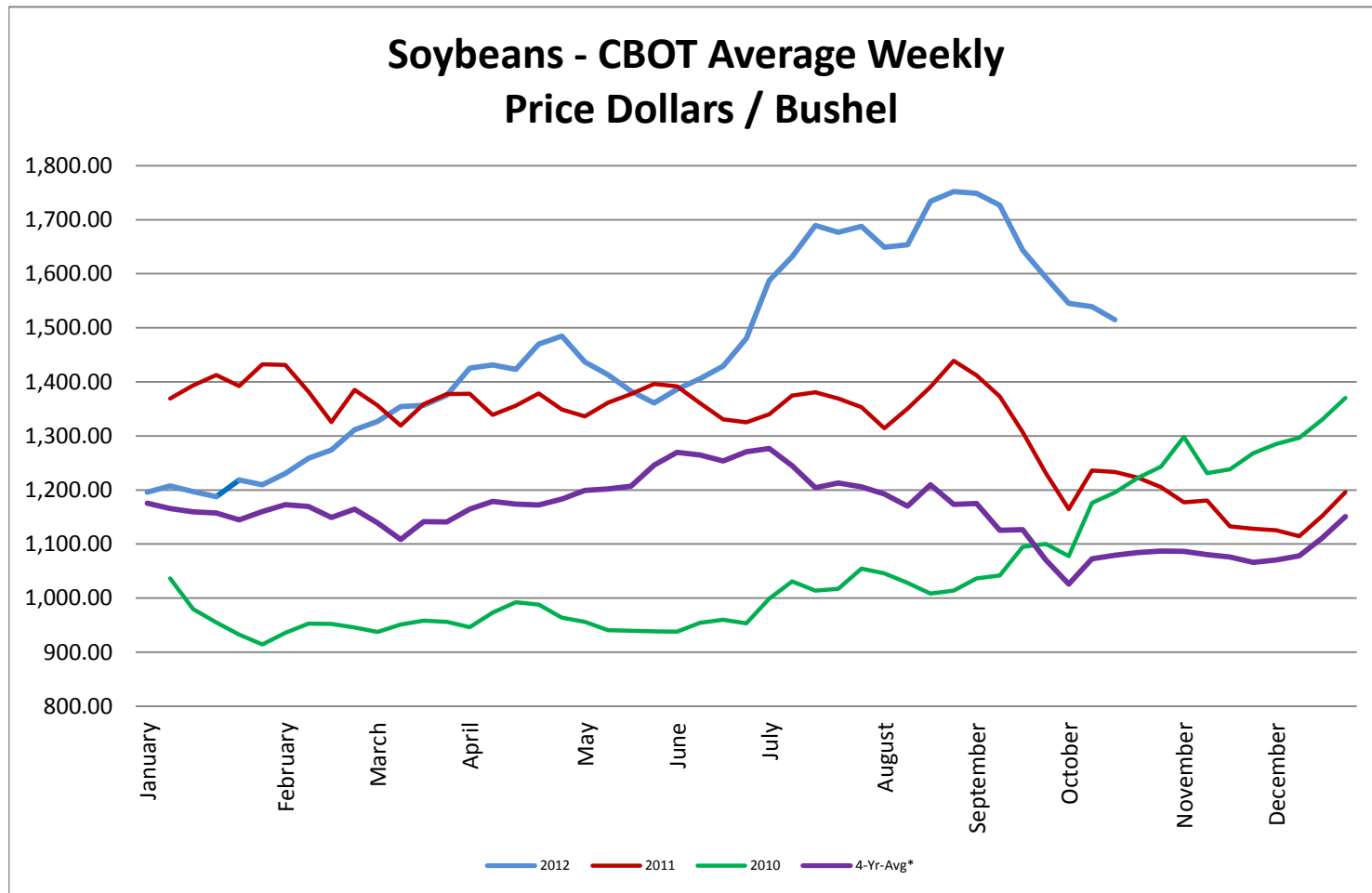
* Used as the indexing unit of measure for this exchange rate

Commodity Information: Commodity information found in this sheet is publically available. It can be found from numerous sources, all of which are noted. This report is for informational purposes only. Please do not make hedging or buying decisions based on this report. Please note that rounding can affect the percent of change values.* Paul's Currency Index compares the U.S. Dollar to five other currencies, Euro, British Pound, Swiss Frank, Canadian Dollar, and Chinese Yuan.

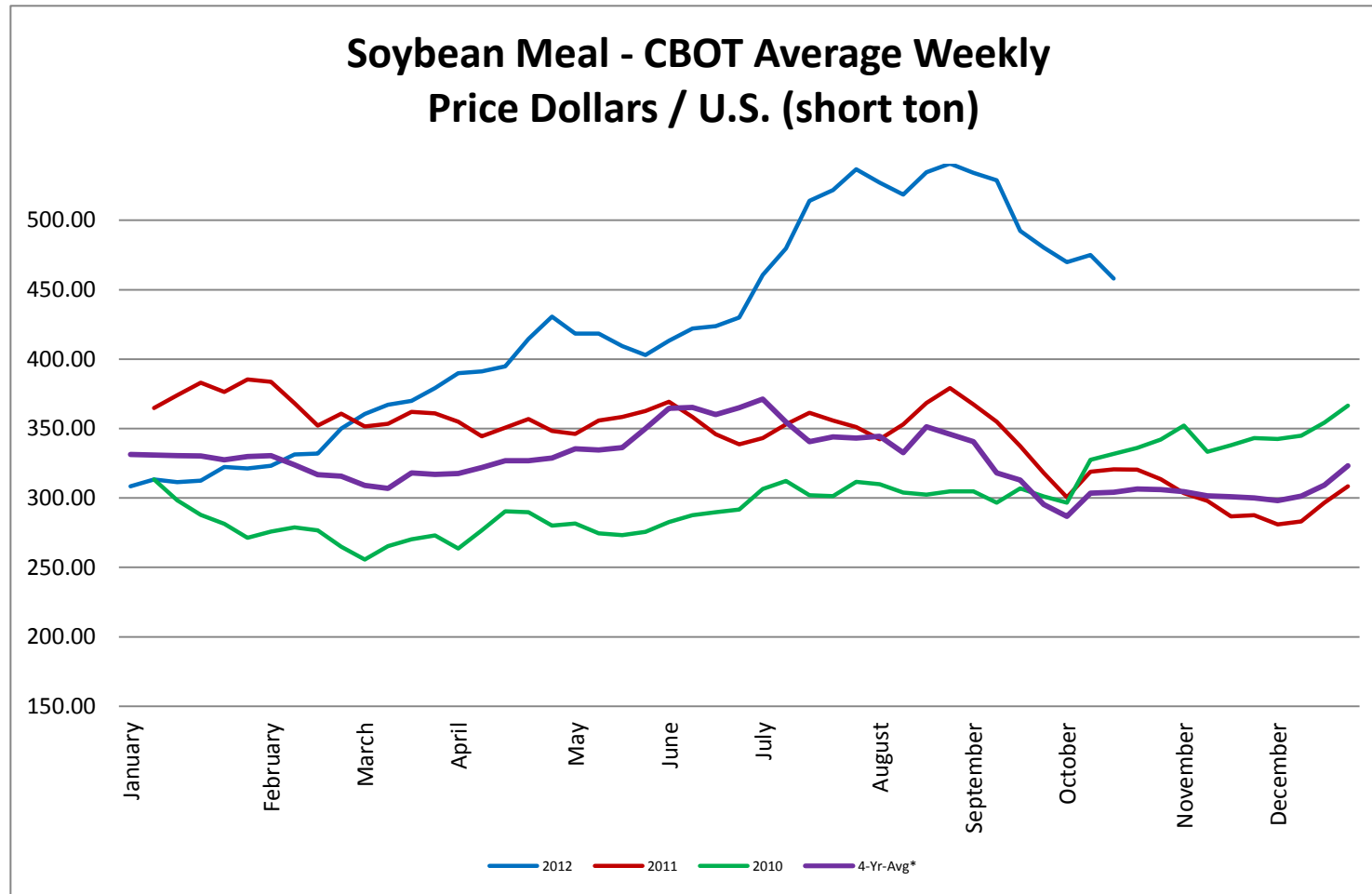
Corn - CBOT Weekly Futures Price



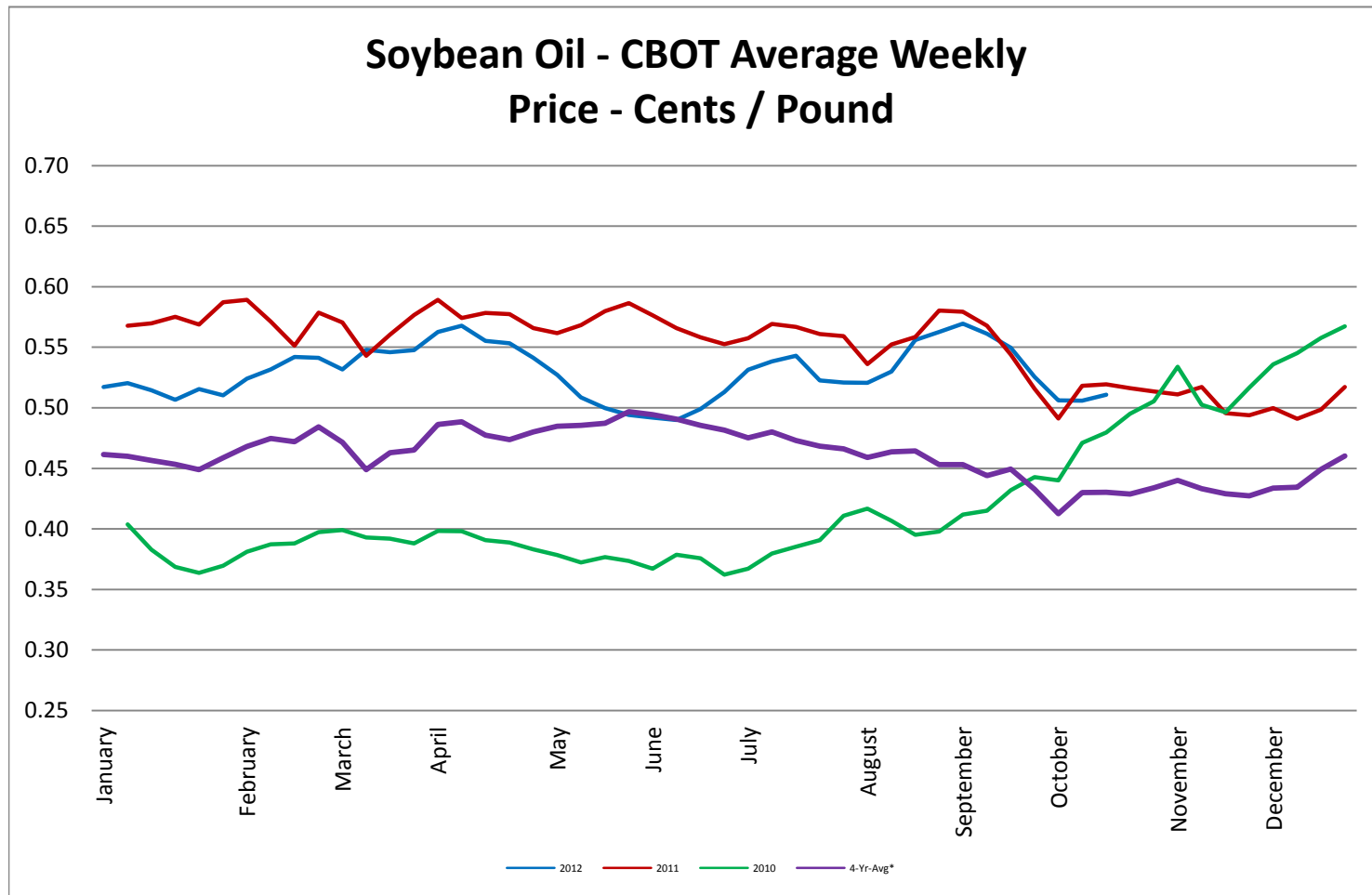
Soybeans - CBOT Weekly Average Price - Dollars / Bushel



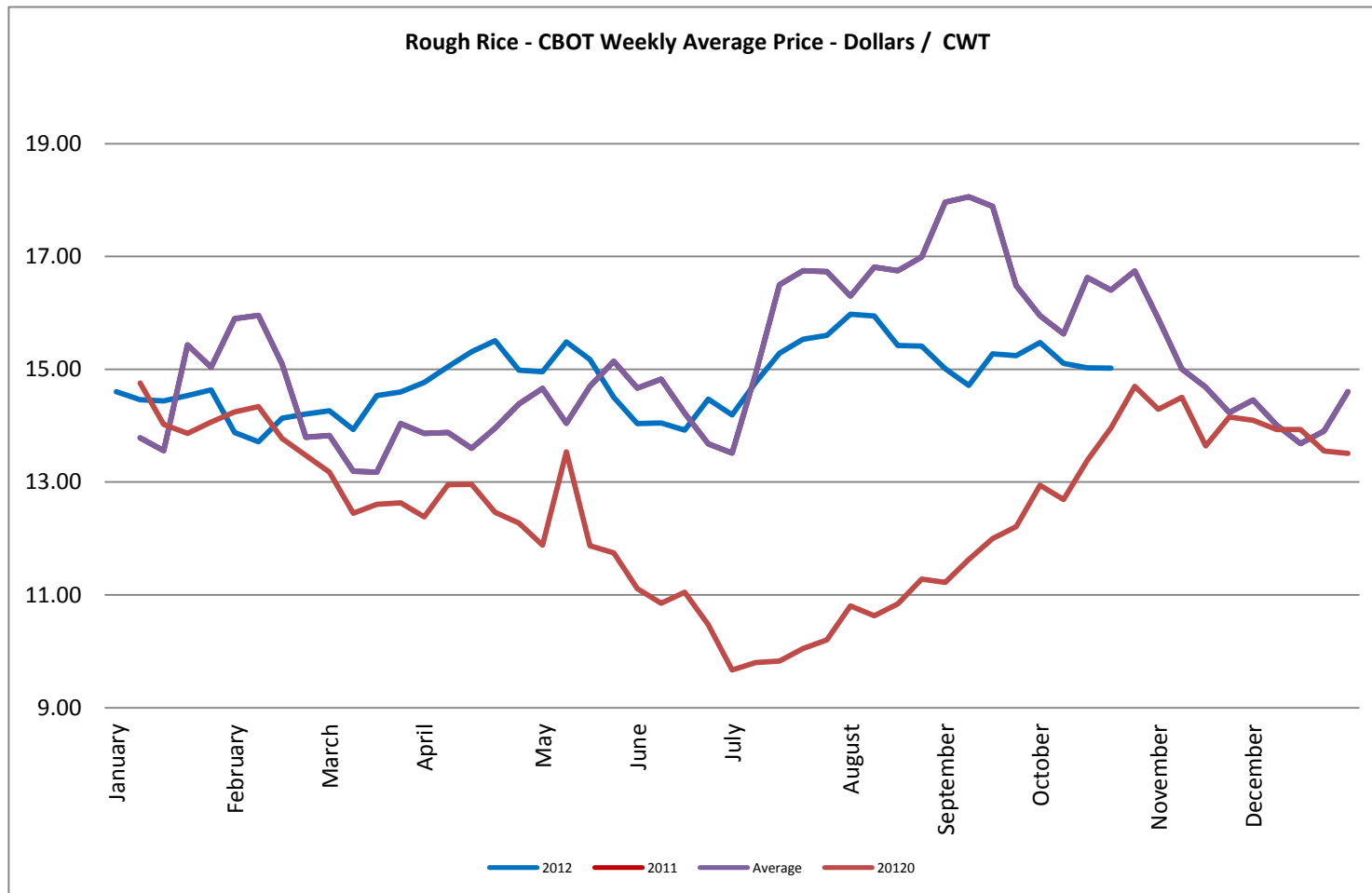
Soybean Meal - CBOT Weekly Average Price - Dollars / US Ton



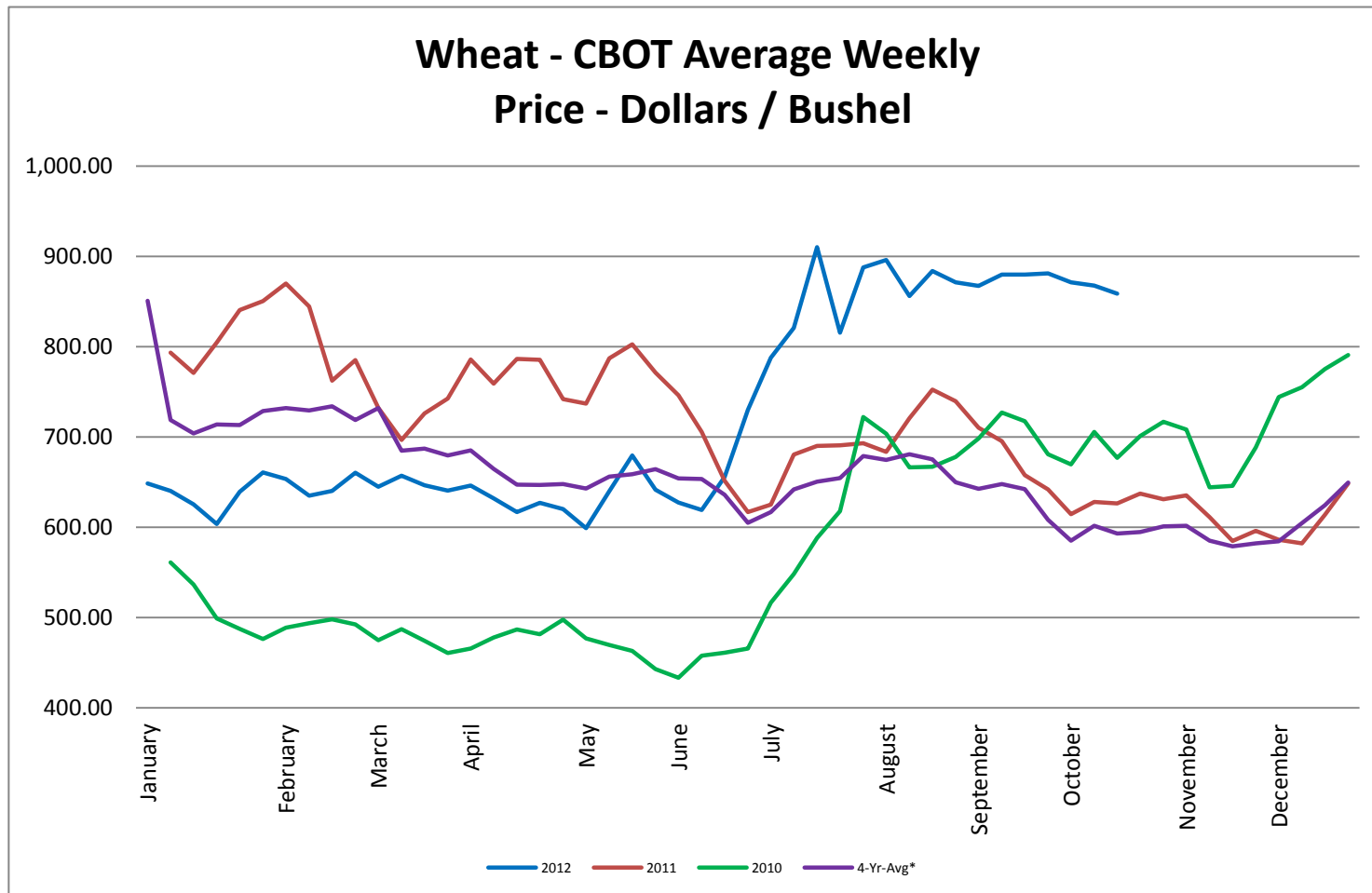
Soybean Oil - CBOT Weekly Average Price - Cents / Pound



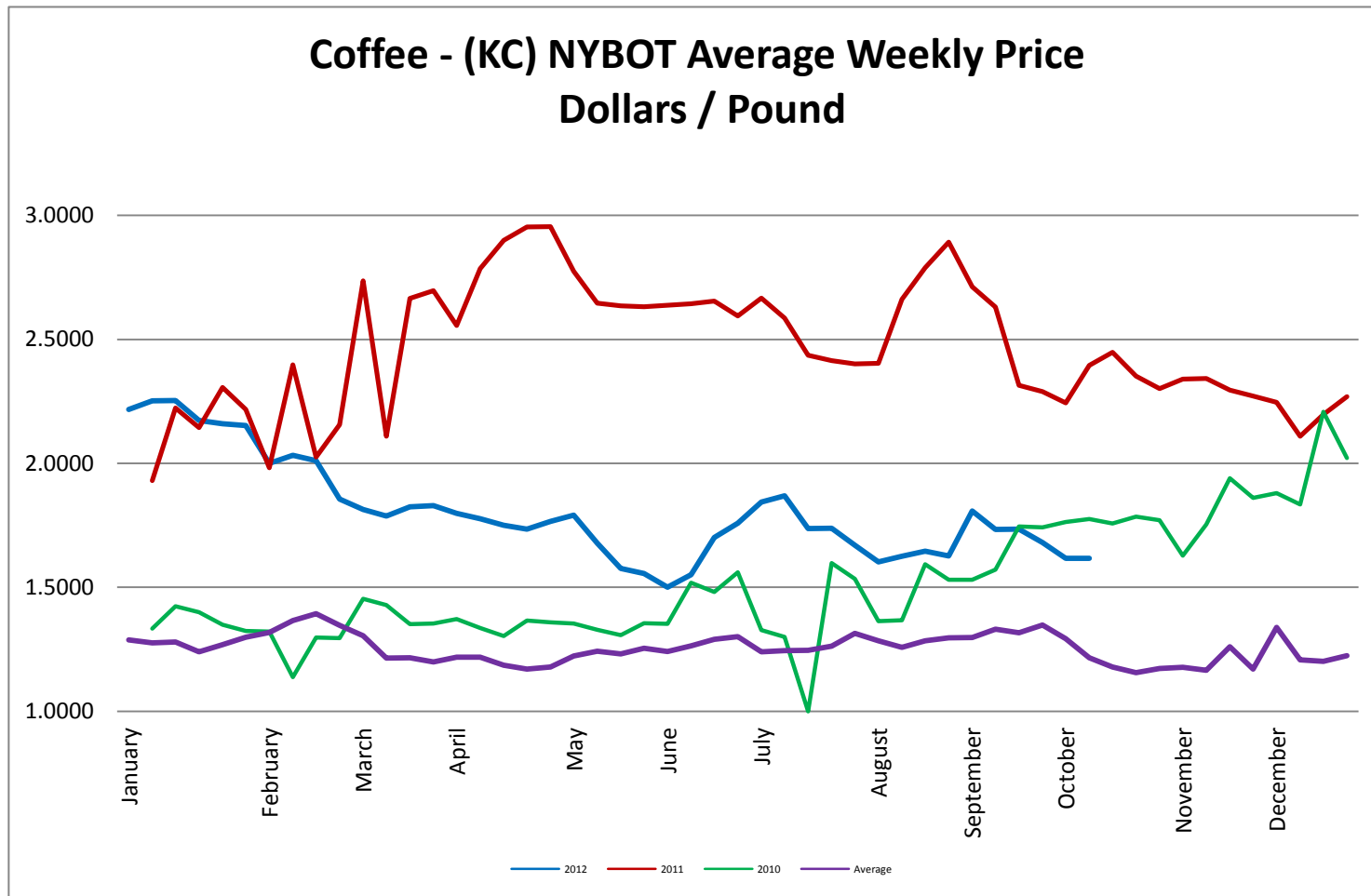
Rough Rice - CBOT Weekly Average Price - Dollars / CWT



Wheat - CBOT Weekly Average Price - Dollars / Bushel

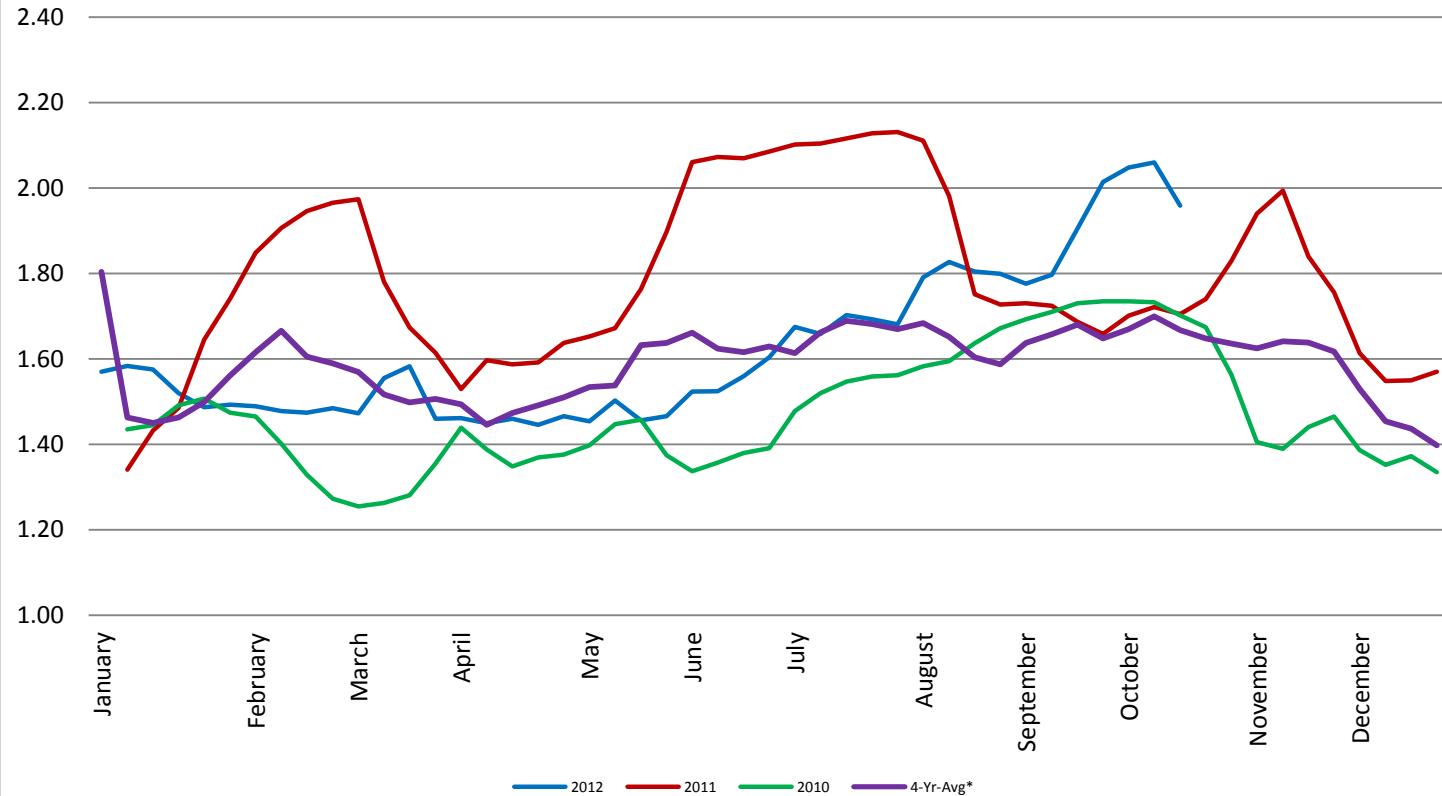


Coffee - (KC) NYBOT Average Weekly Price - Dollars per Pound



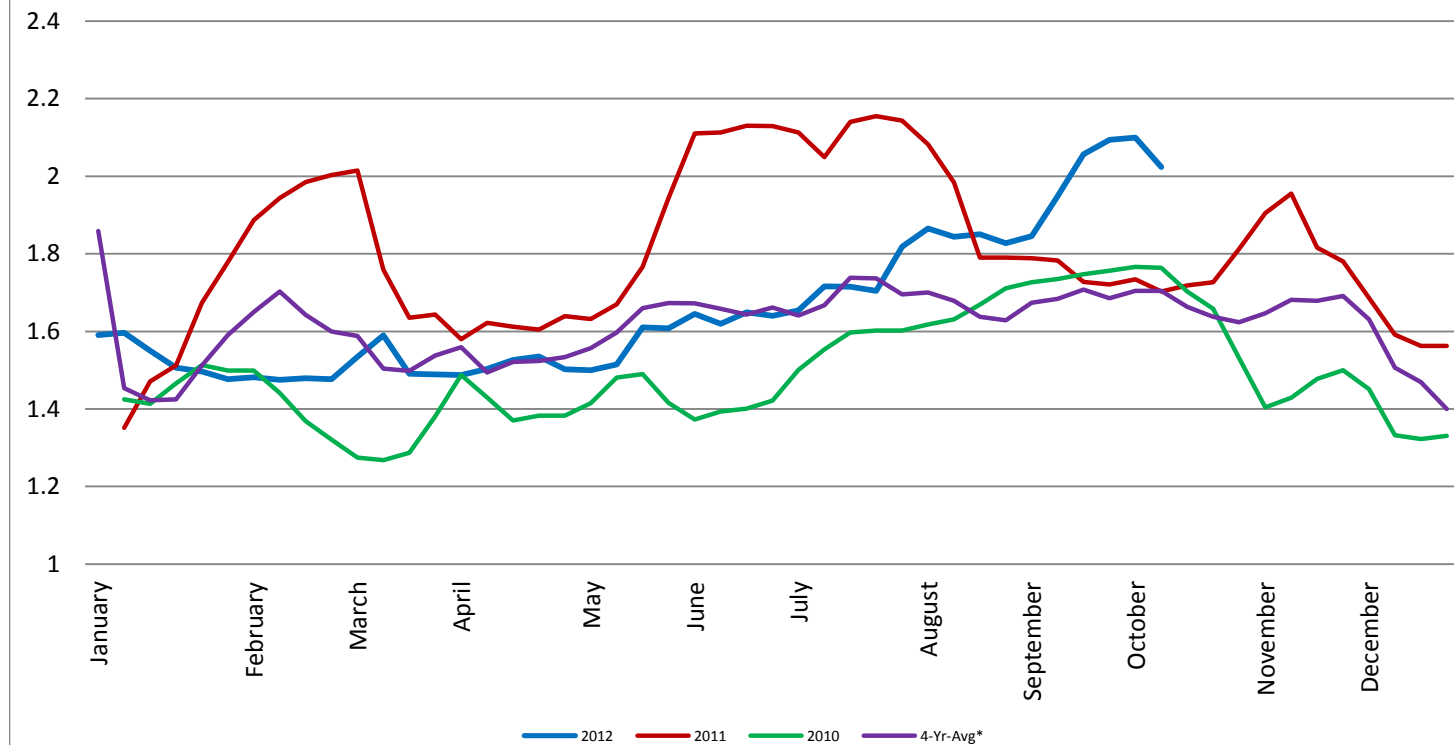
Barrel Cheddar - CME Average Weekly Price / Pound

Barrel Cheddar - CME Average Weekly Dollars per Pound

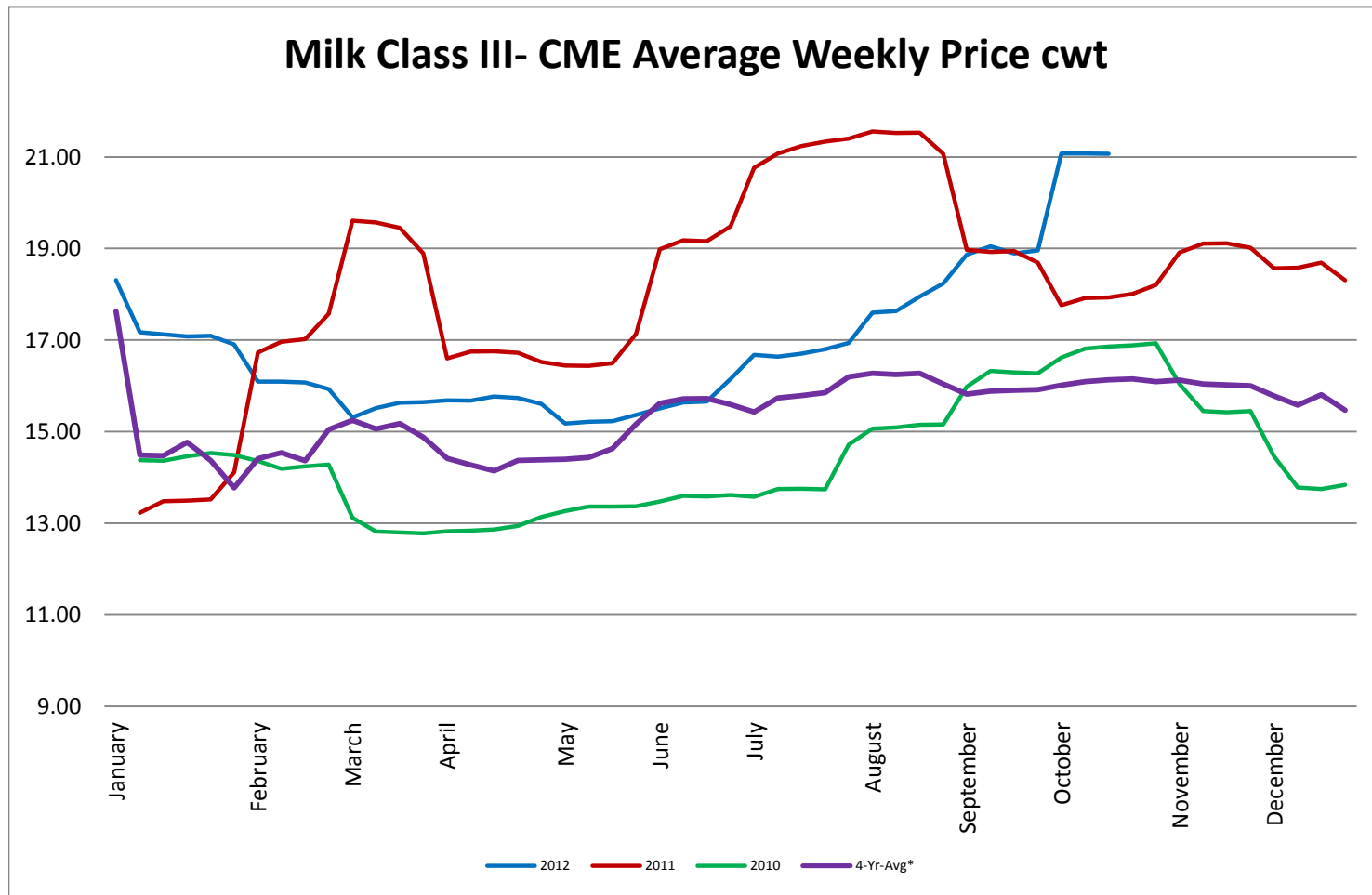


40 LB Block Cheddar - CME Average Weekly Price / Pound

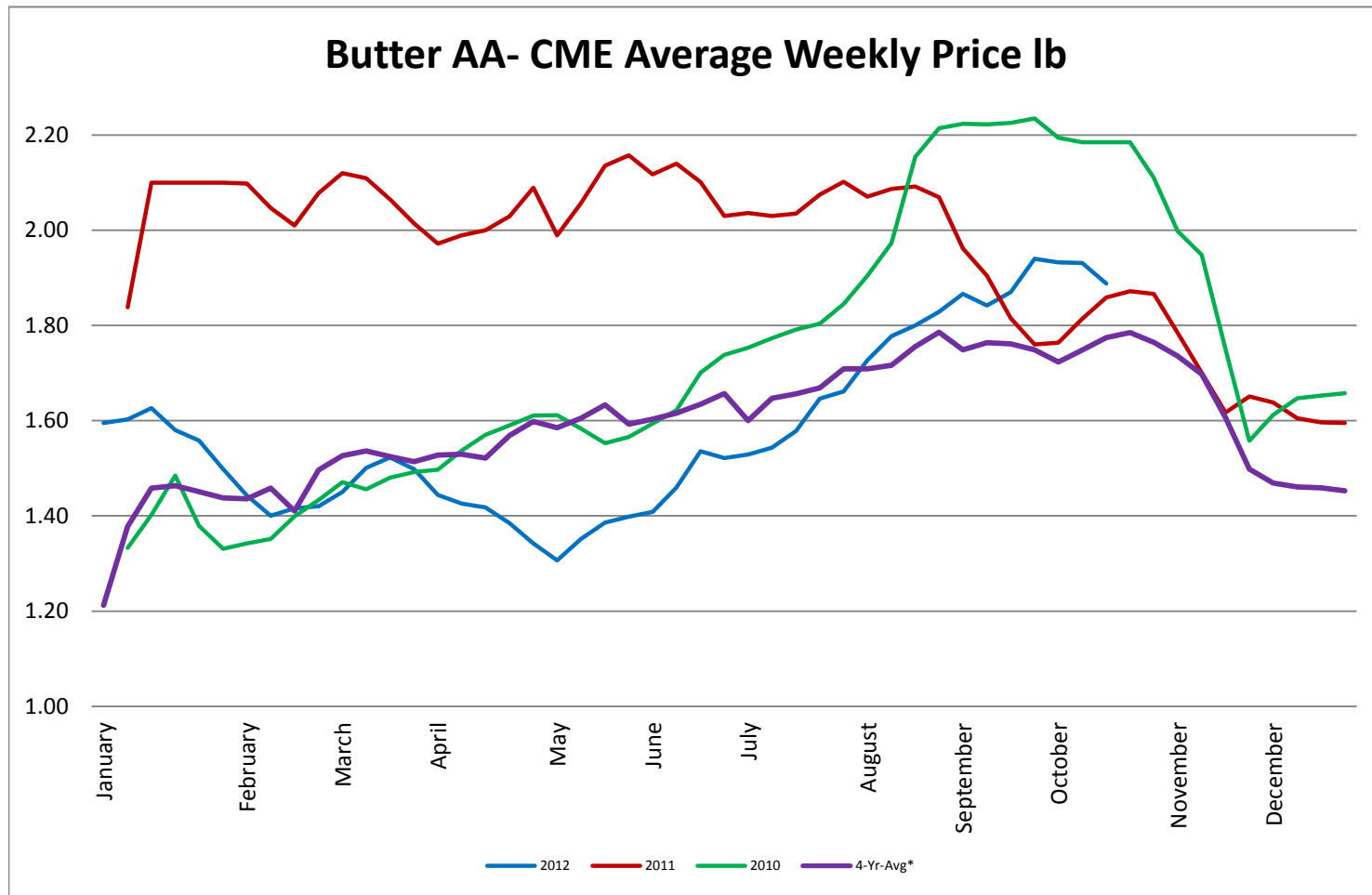
Block Cheddar 40 #- CME Average Weekly Dollars per Pound



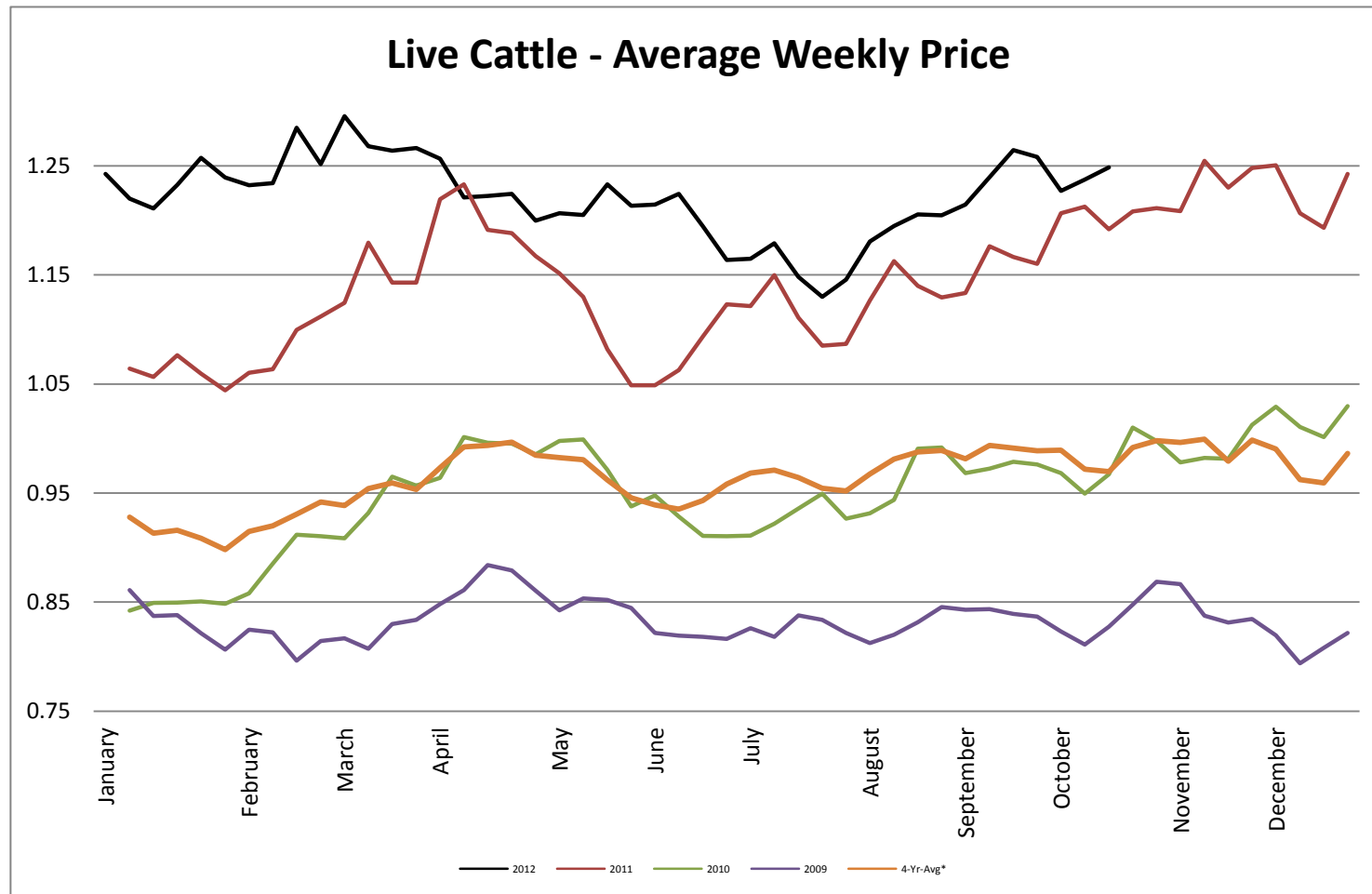
Milk Class III - CME Average Weekly Price CWT



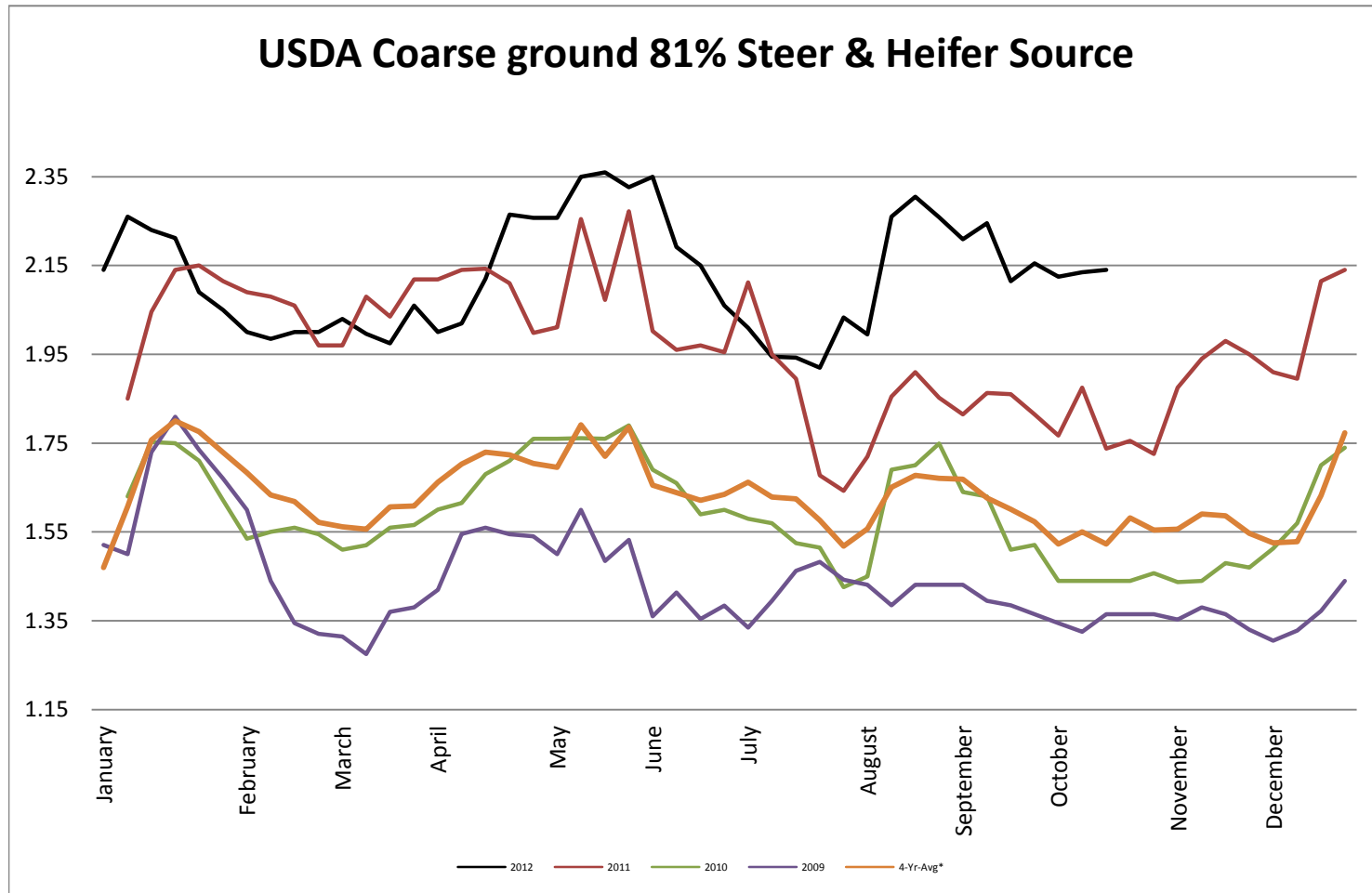
Butter AA - CME Average Weekly Price lb



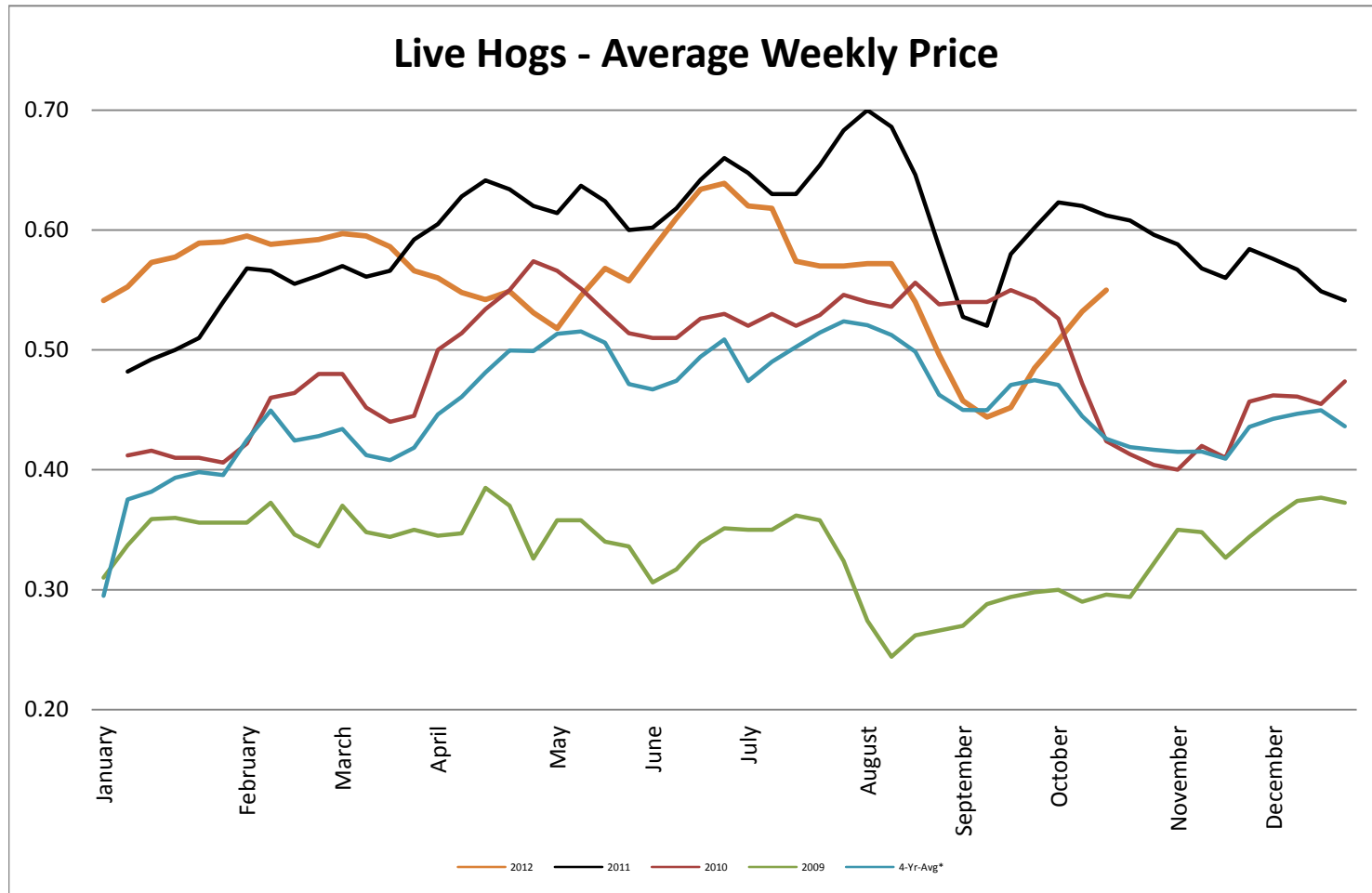
Live Cattle - Average Weekly Price USDA - 6 State Average



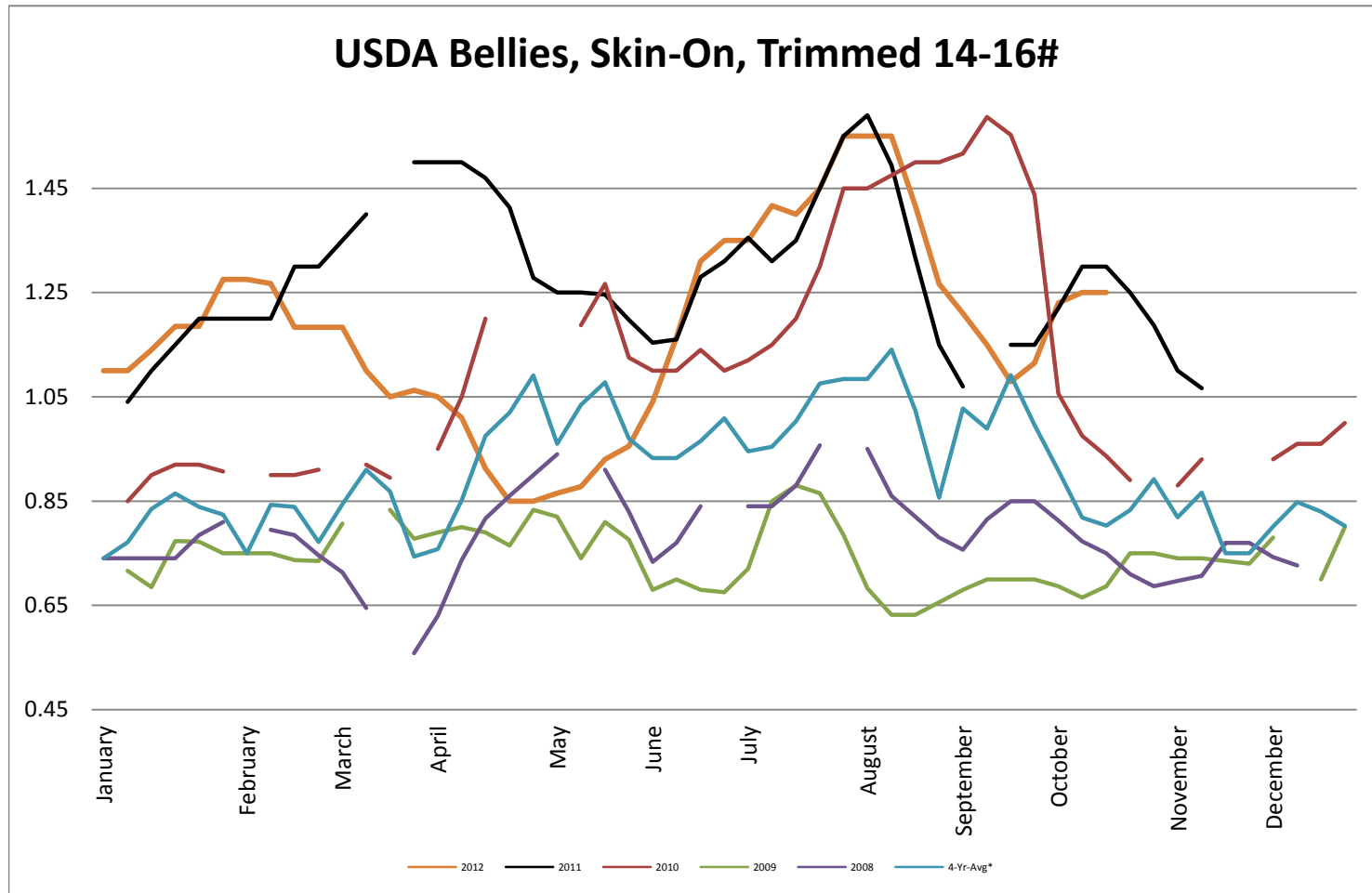
USDA Coarse ground 81% Steer & Heifer Source



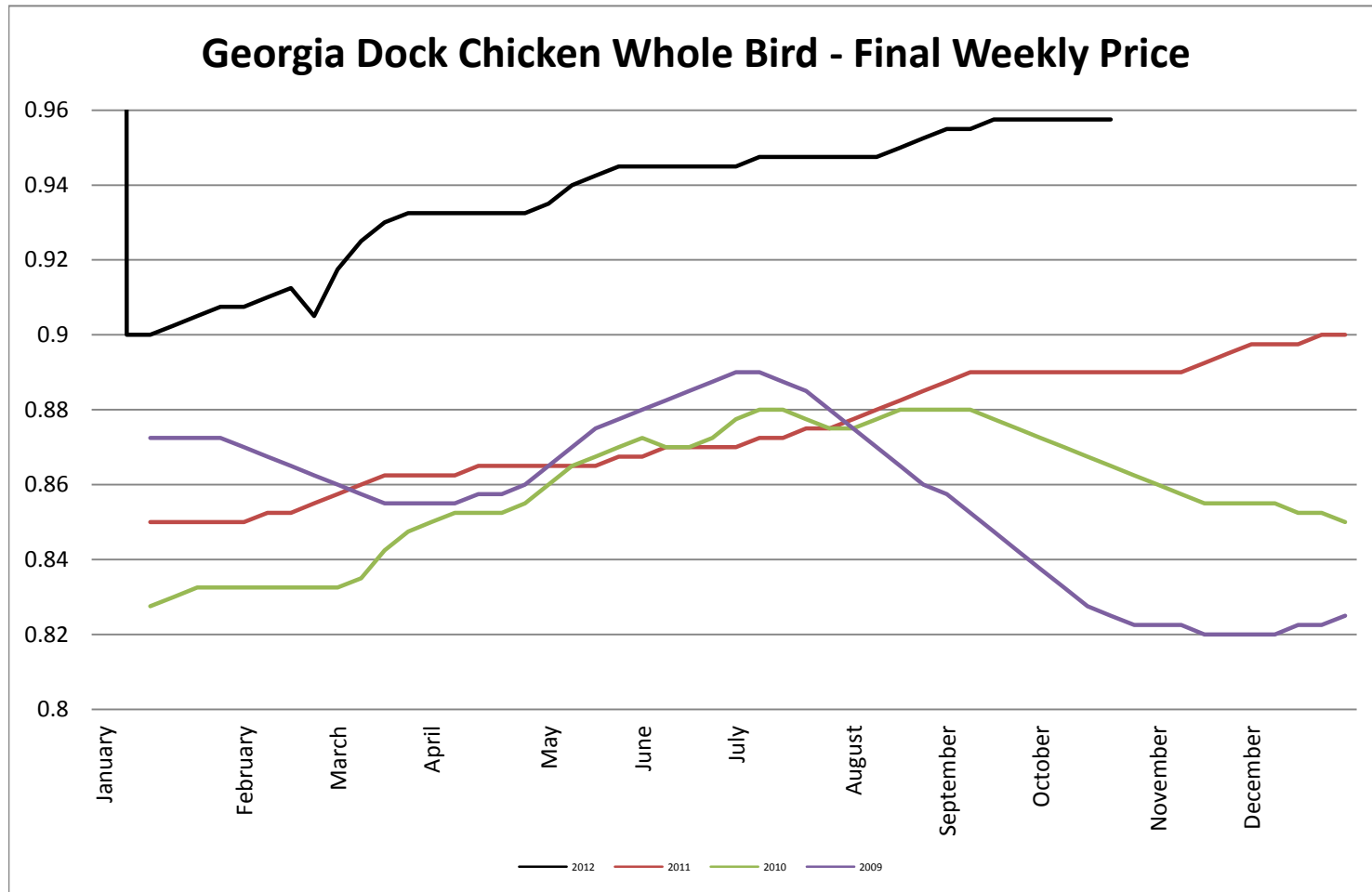
USDA Live Hogs - Average Weekly Price



USDA Bellies, Skin-On, Trimmed 14-16#

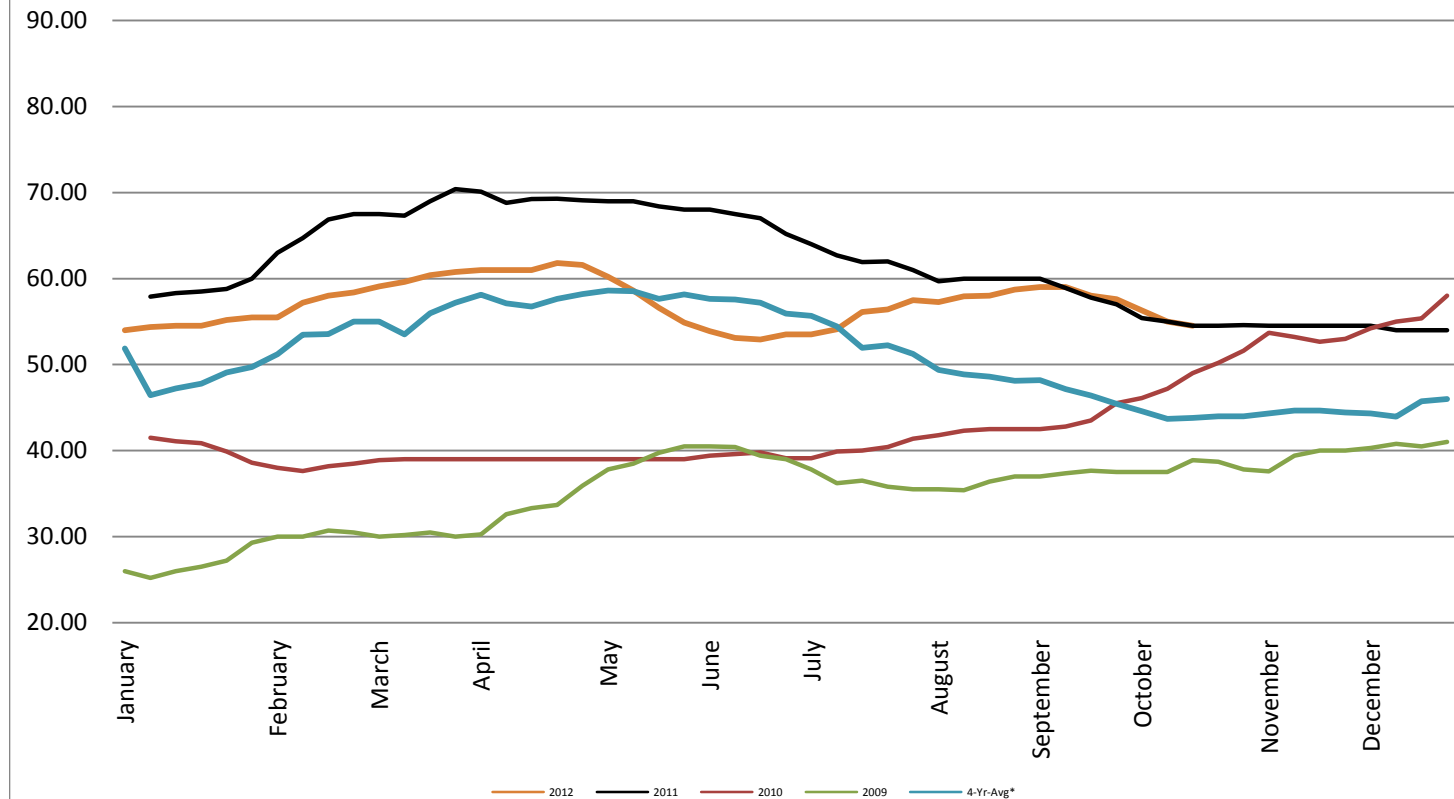


Georgia Dock Chicken - Final Weekly Price

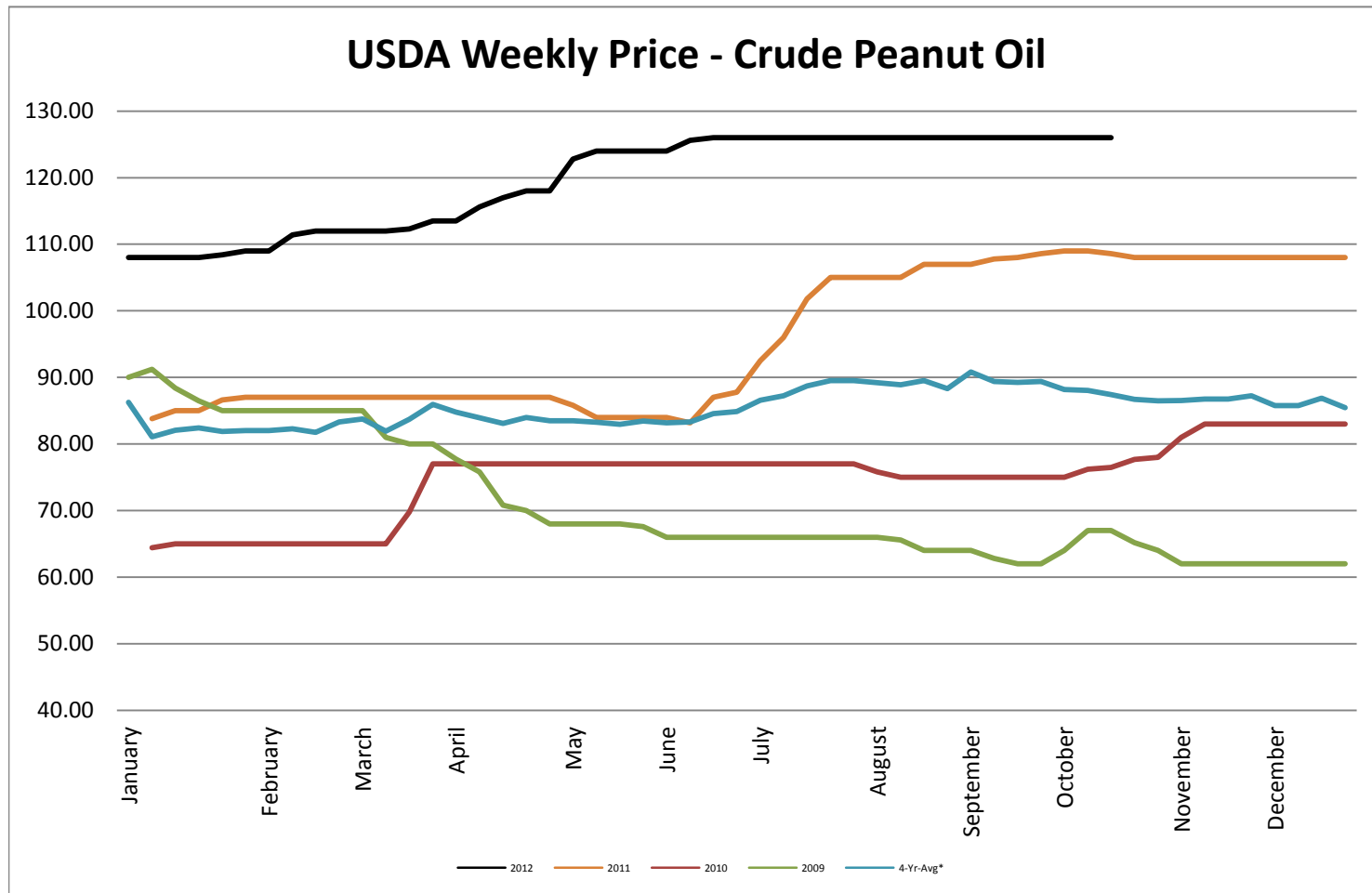


USDA Weekly Price - Crude Corn Oil

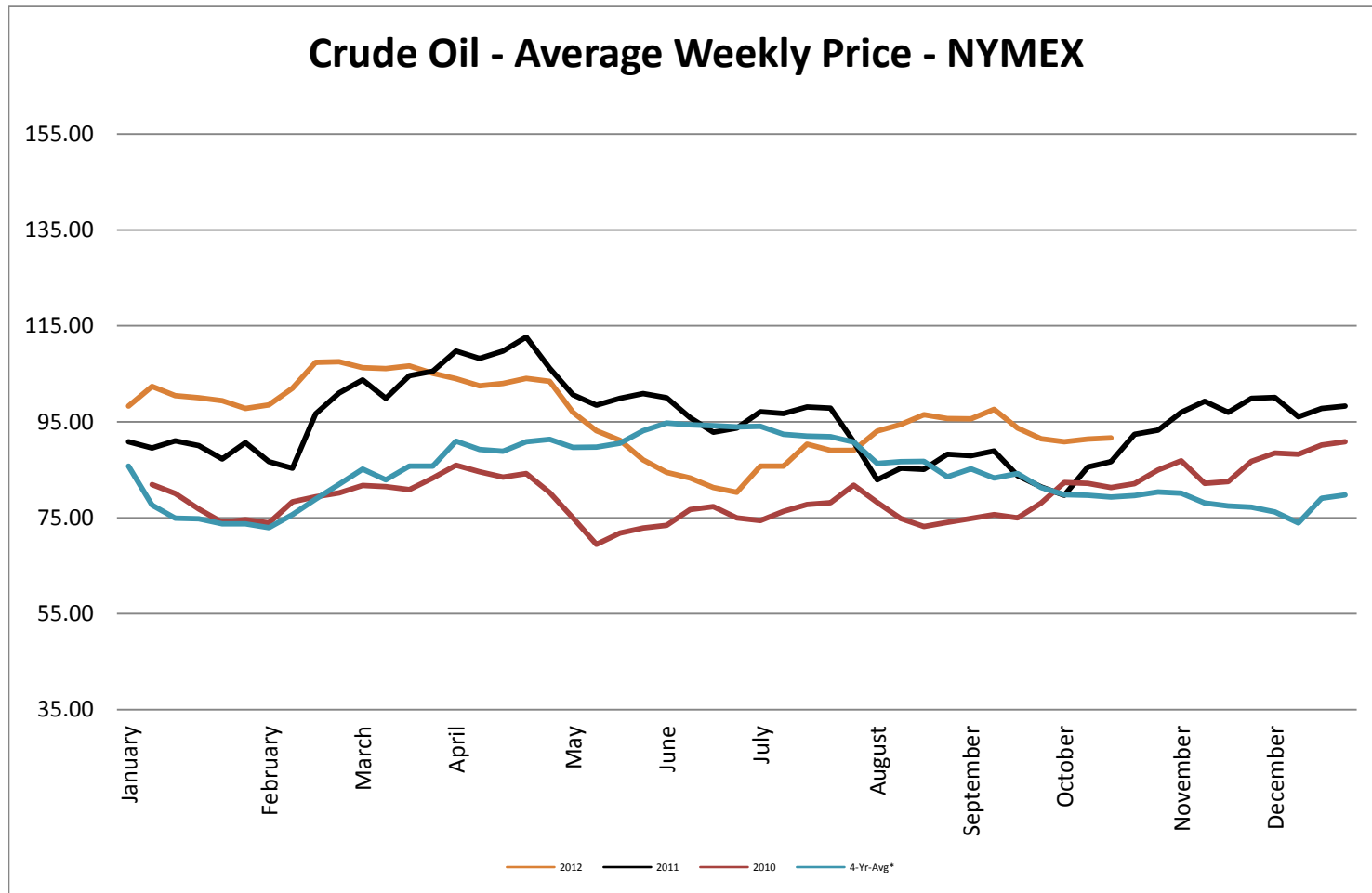
USDA Illinois Weekly Price - Crude Corn Oil

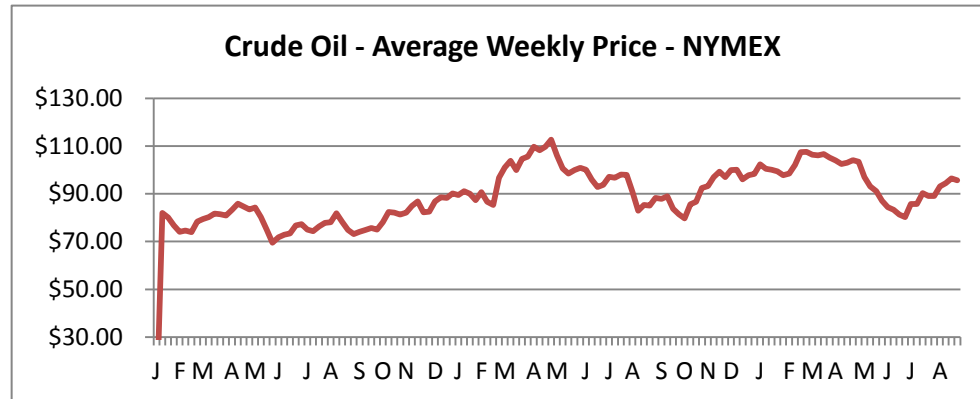


USDA Weekly Price - Crude Peanut Oil

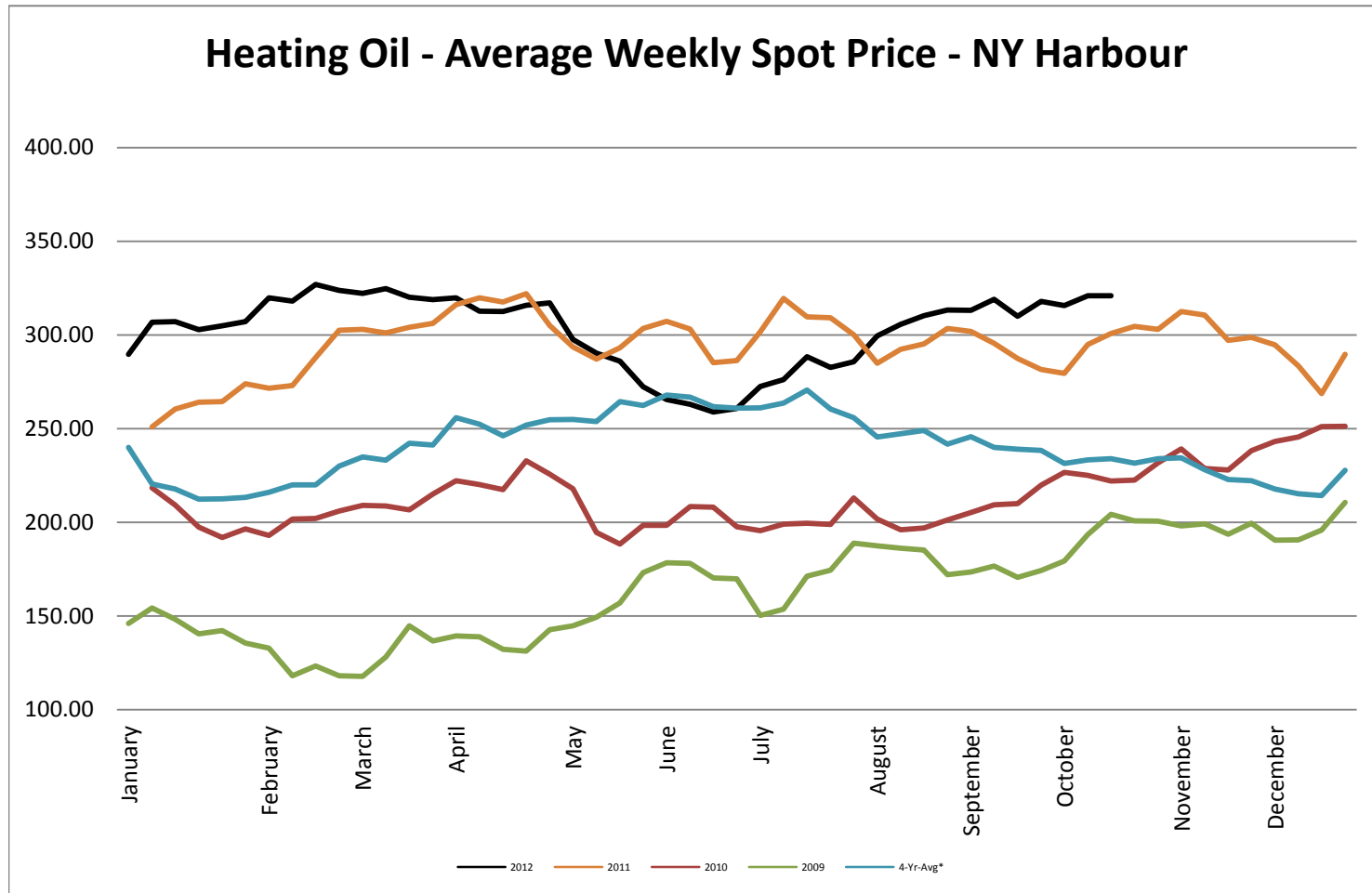


Crude Oil - Average Weekly Price - NYMEX

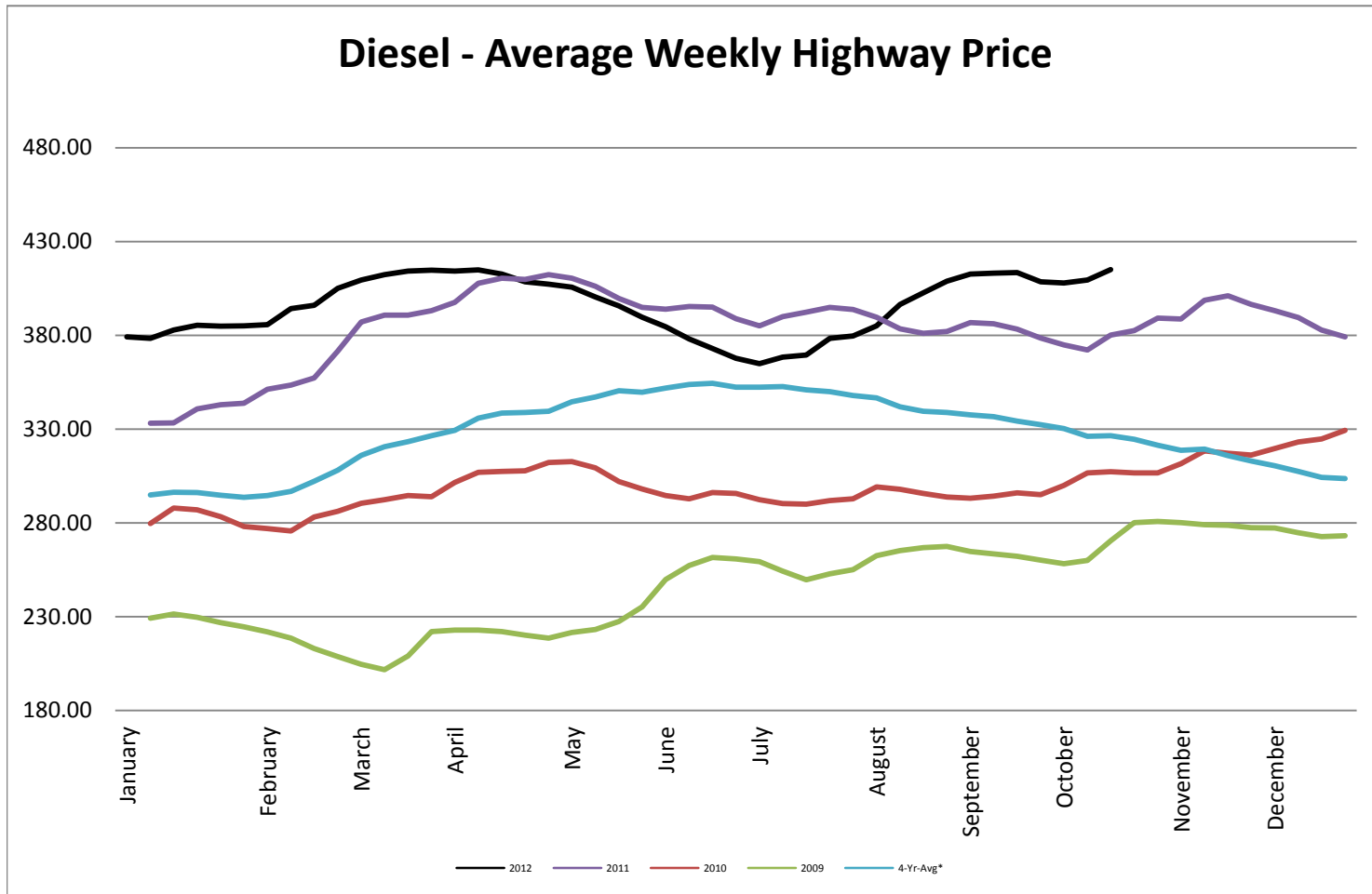




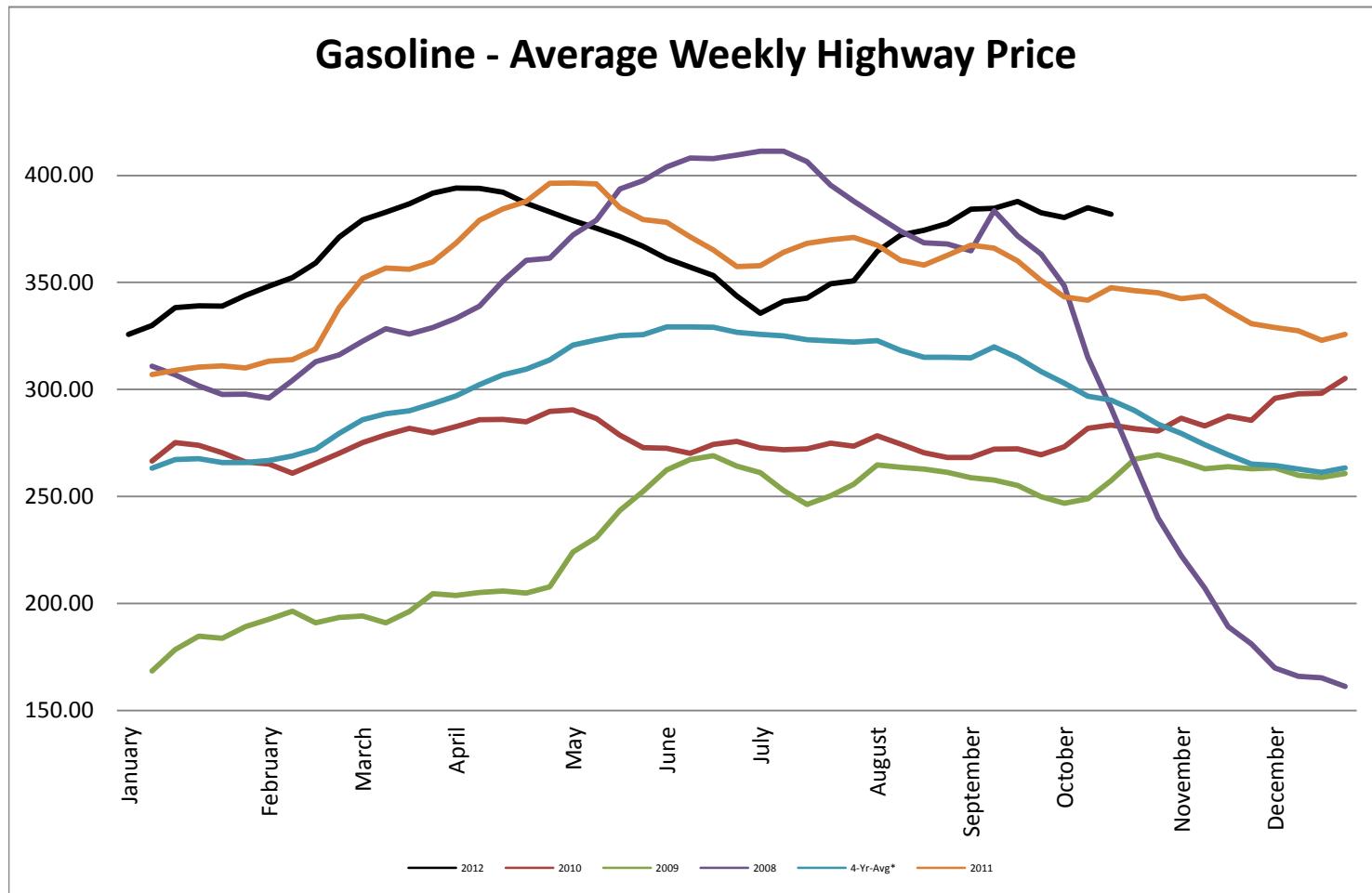
Heating Oil - Average Weekly Spot Price - NY Harbour



Diesel - Average Weekly Highway Price

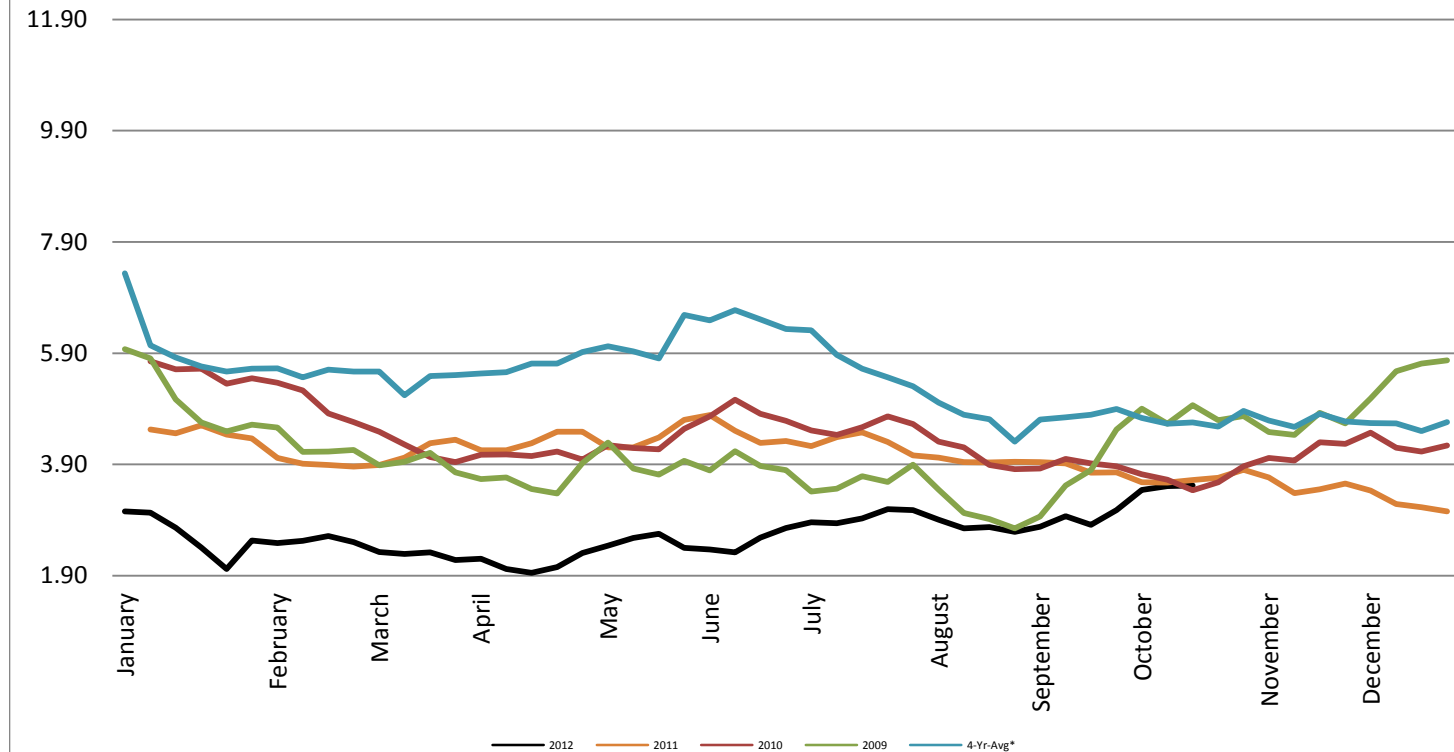


Gasoline Unleaded - Average Weekly Highway Price

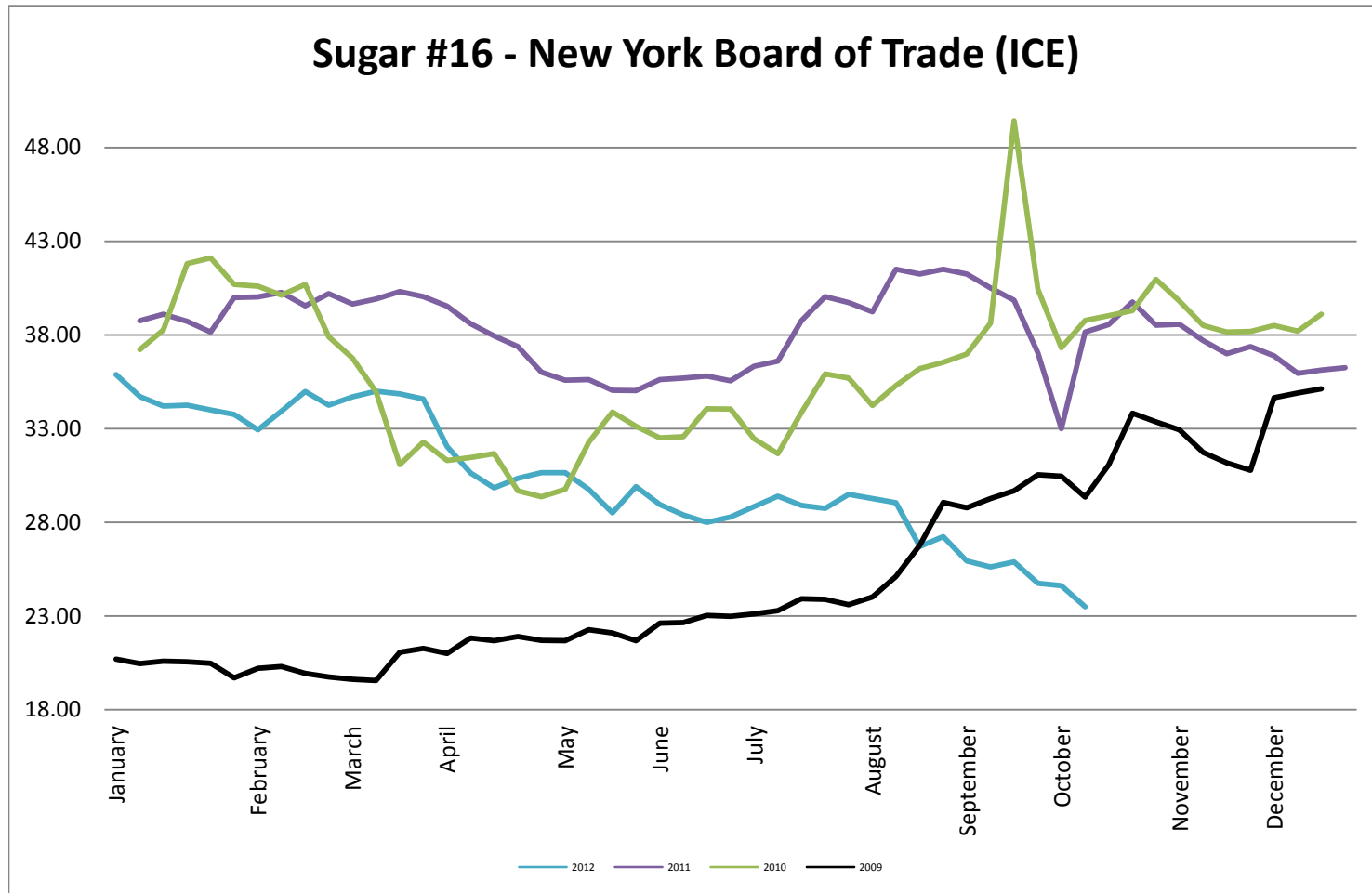


Natural Gas Futures - New York Mercantile Exchange

Natural Gas Futures - New York Mercantile Exchange



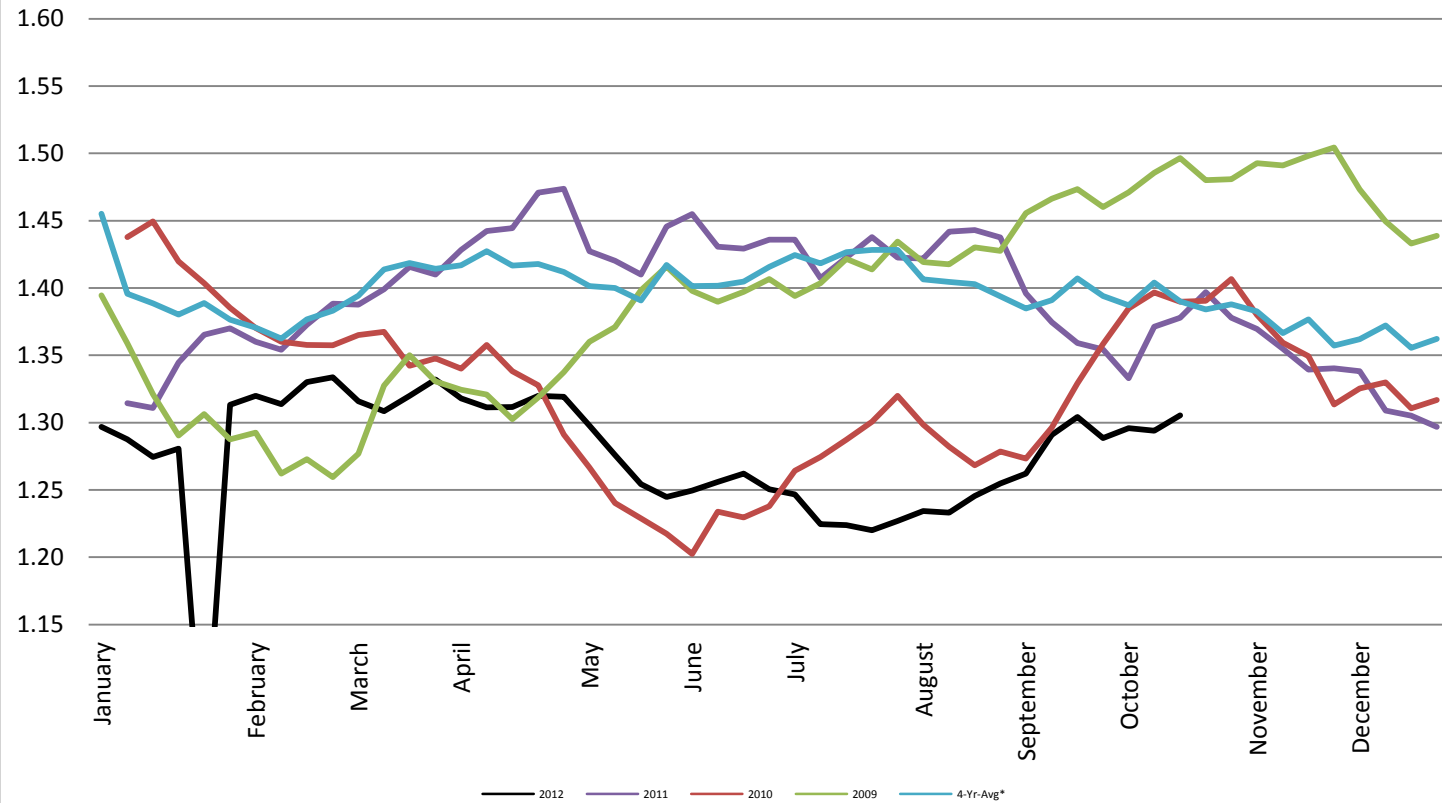
Sugar #16 - New York Board of Trade (ICE)



Foreign Exchange Rate - Euro, EMU Members

Foreign Exchange Rate - Euro, EMU Members

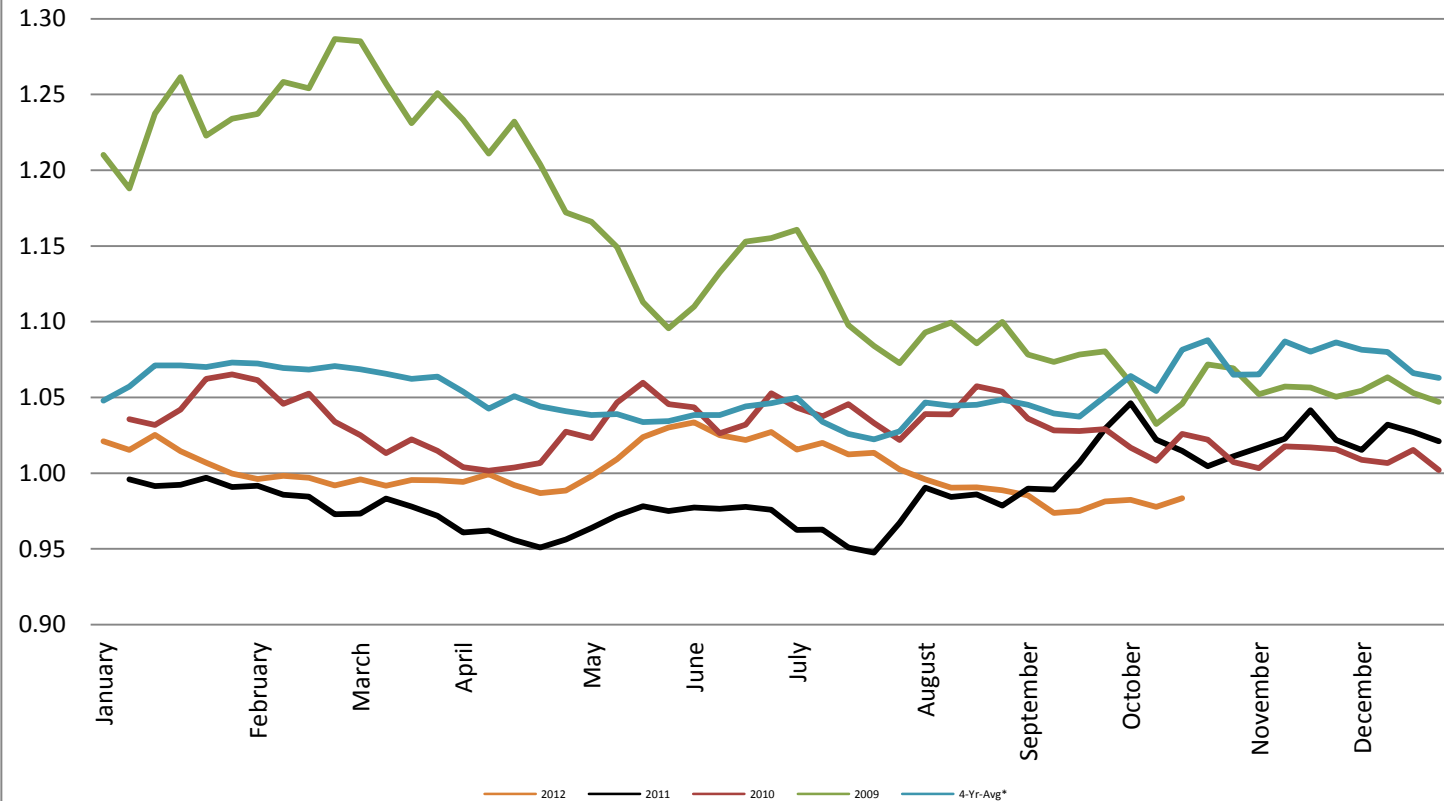
Federal Reserve Bank of New York



Foreign Exchange Rate - Canadian Dollar

Foreign Exchange Rate - Canadian Dollar

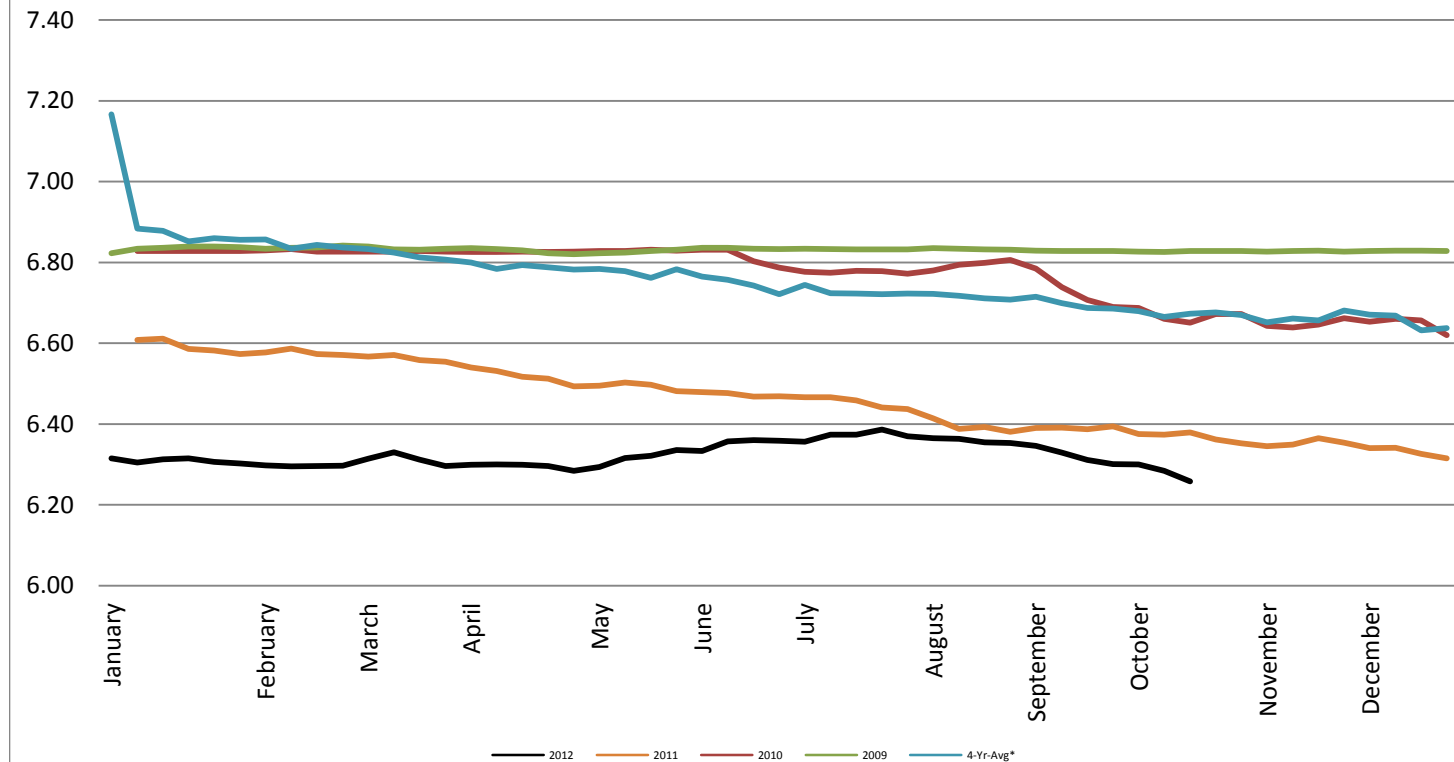
Federal Reserve Bank of New York



Foreign Exchange Rate - Chinese Yuan

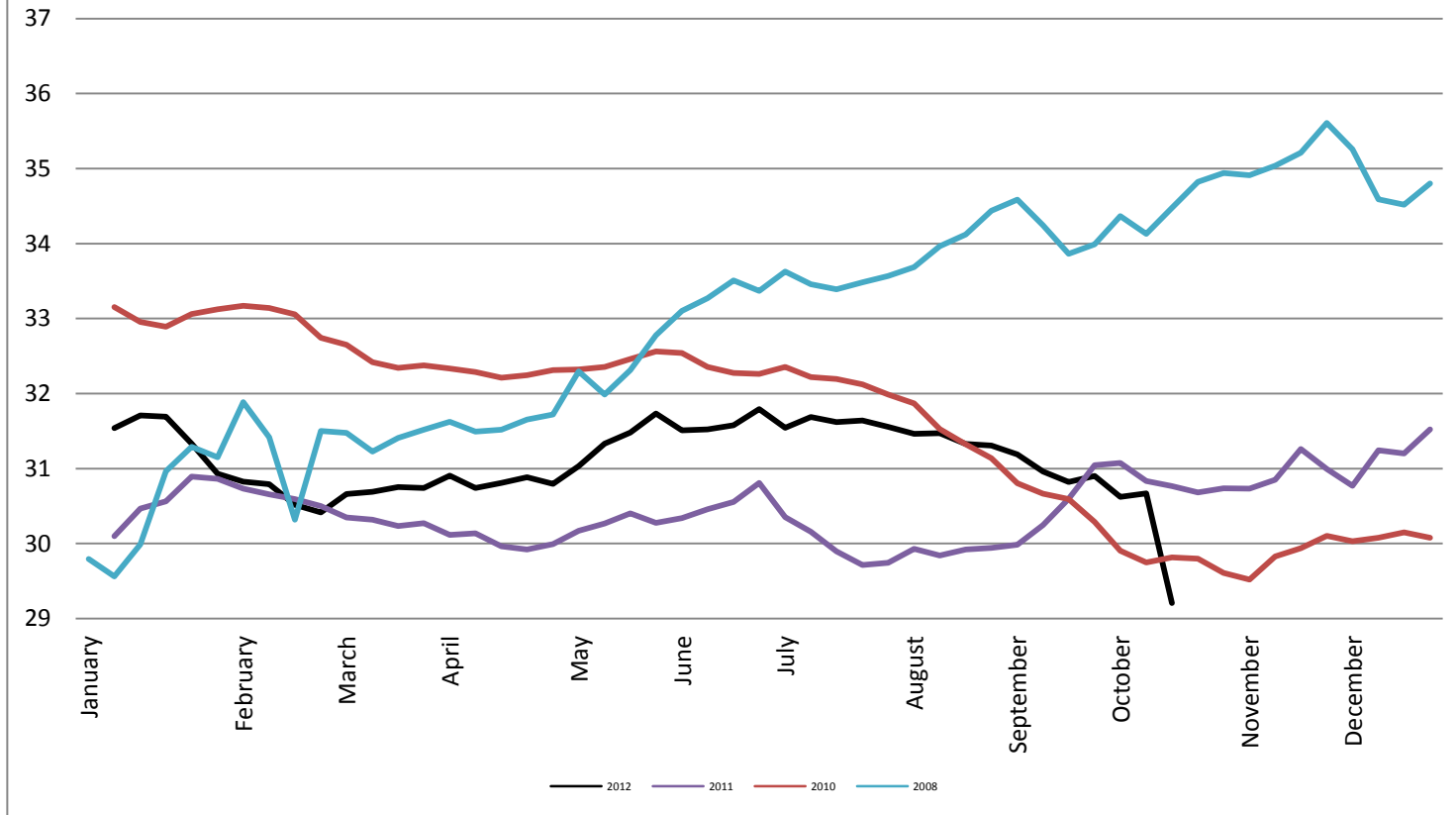
Foreign Exchange Rate - Chinese Yuan

Federal Reserve Bank of New York



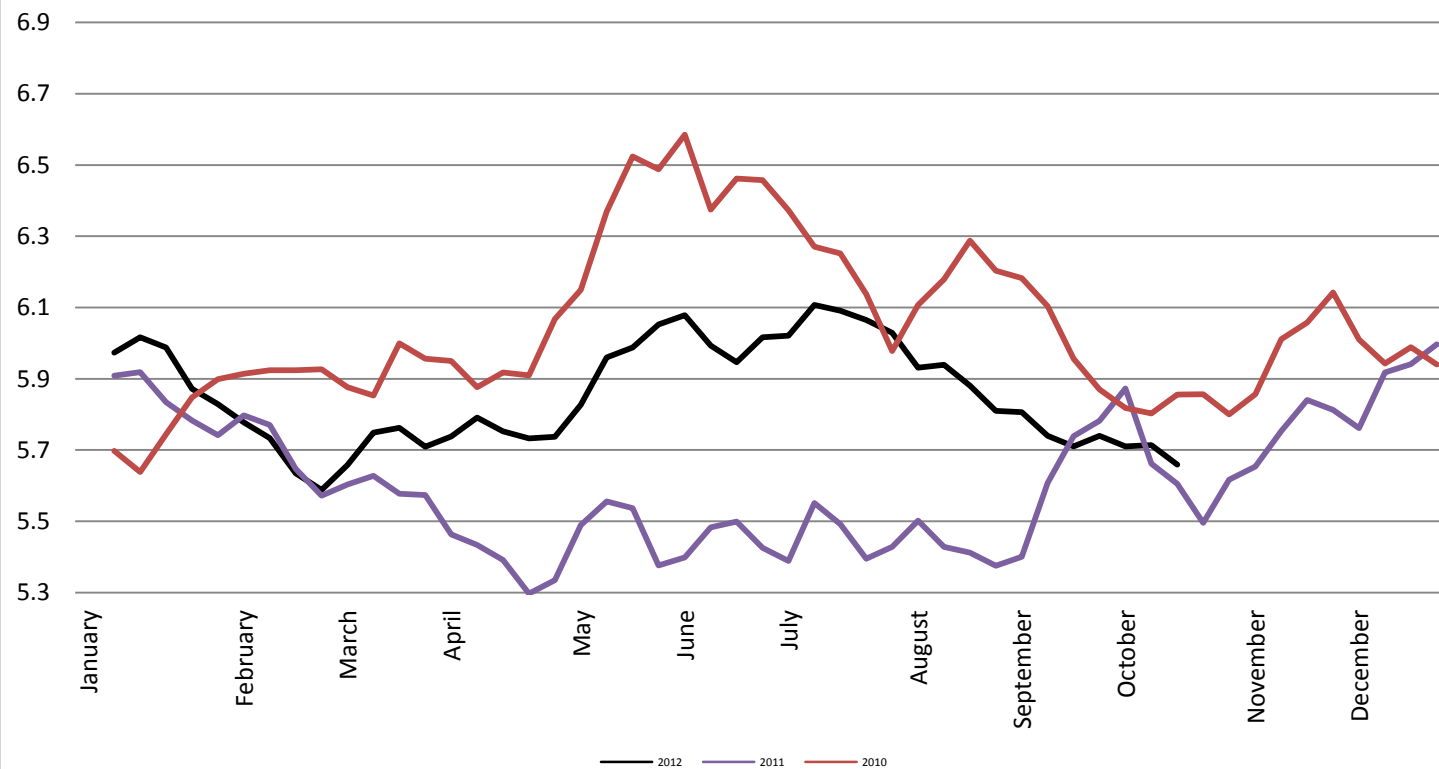
Foreign Exchange Rate

Thailand - Baht *Federal Reserve Bank of New York*



Foreign Exchange Rate

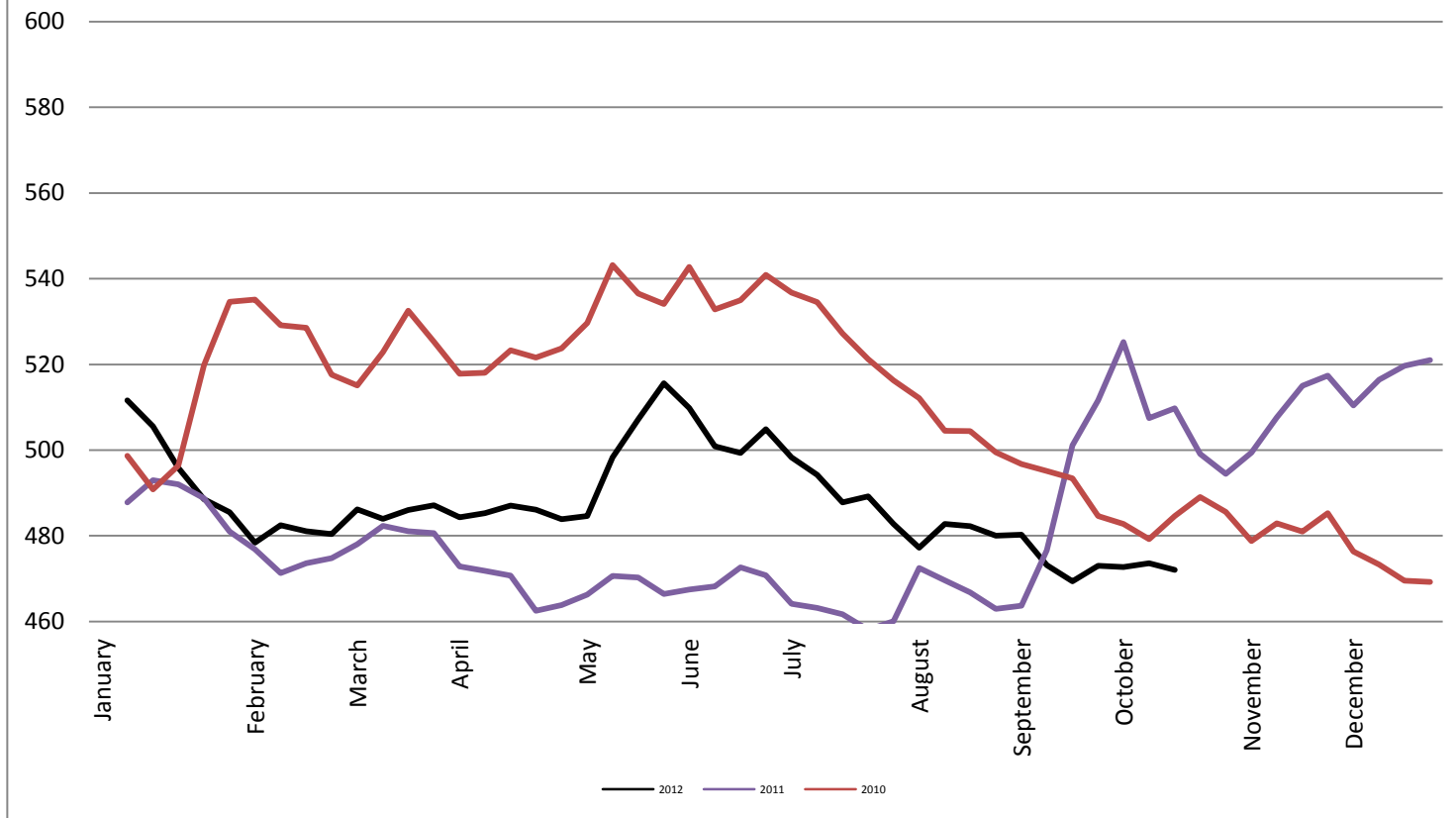
Nowegian Krone *Federal Reserve Bank of New York*



Foreign Exchange Rate

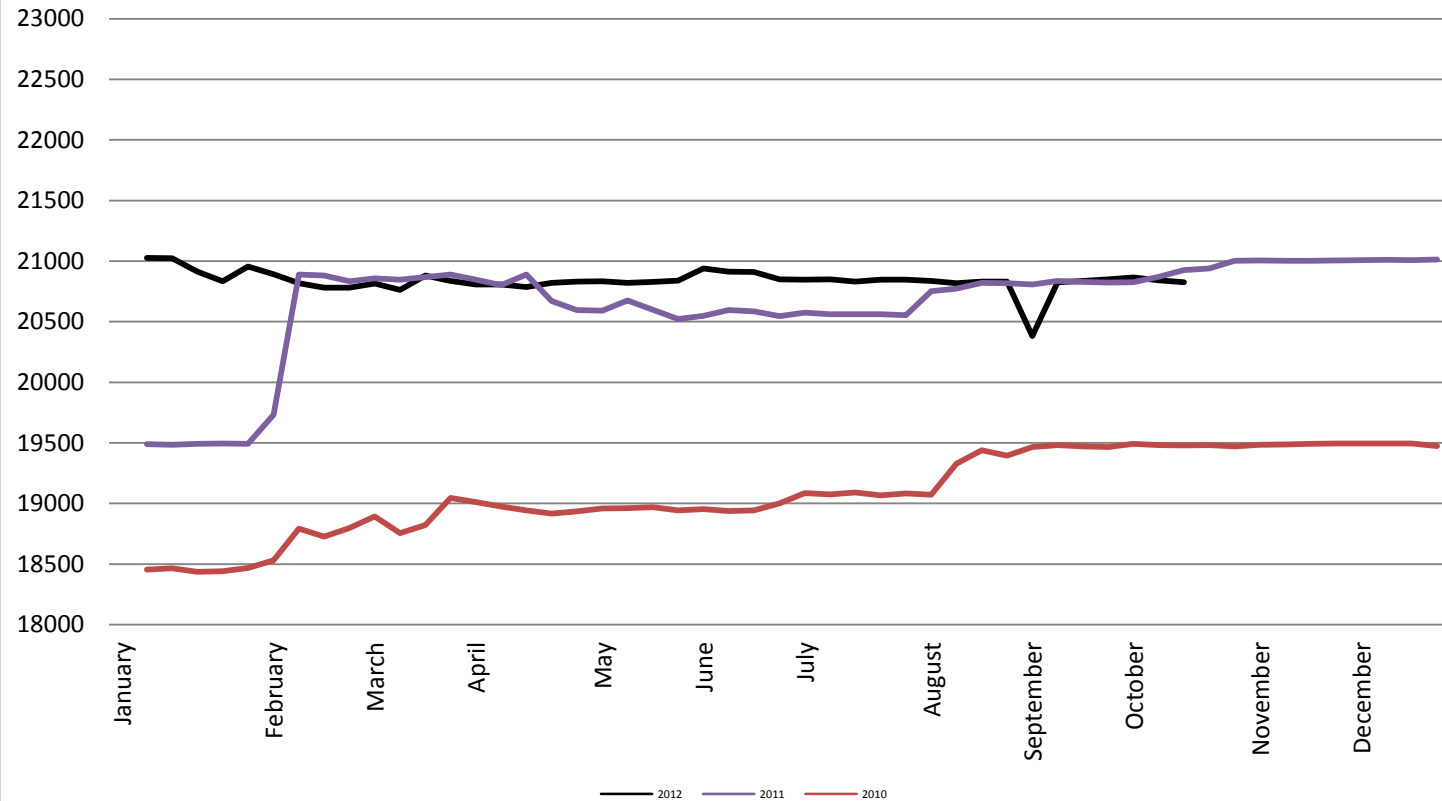
Chile Peso

Federal Reserve Bank of New York

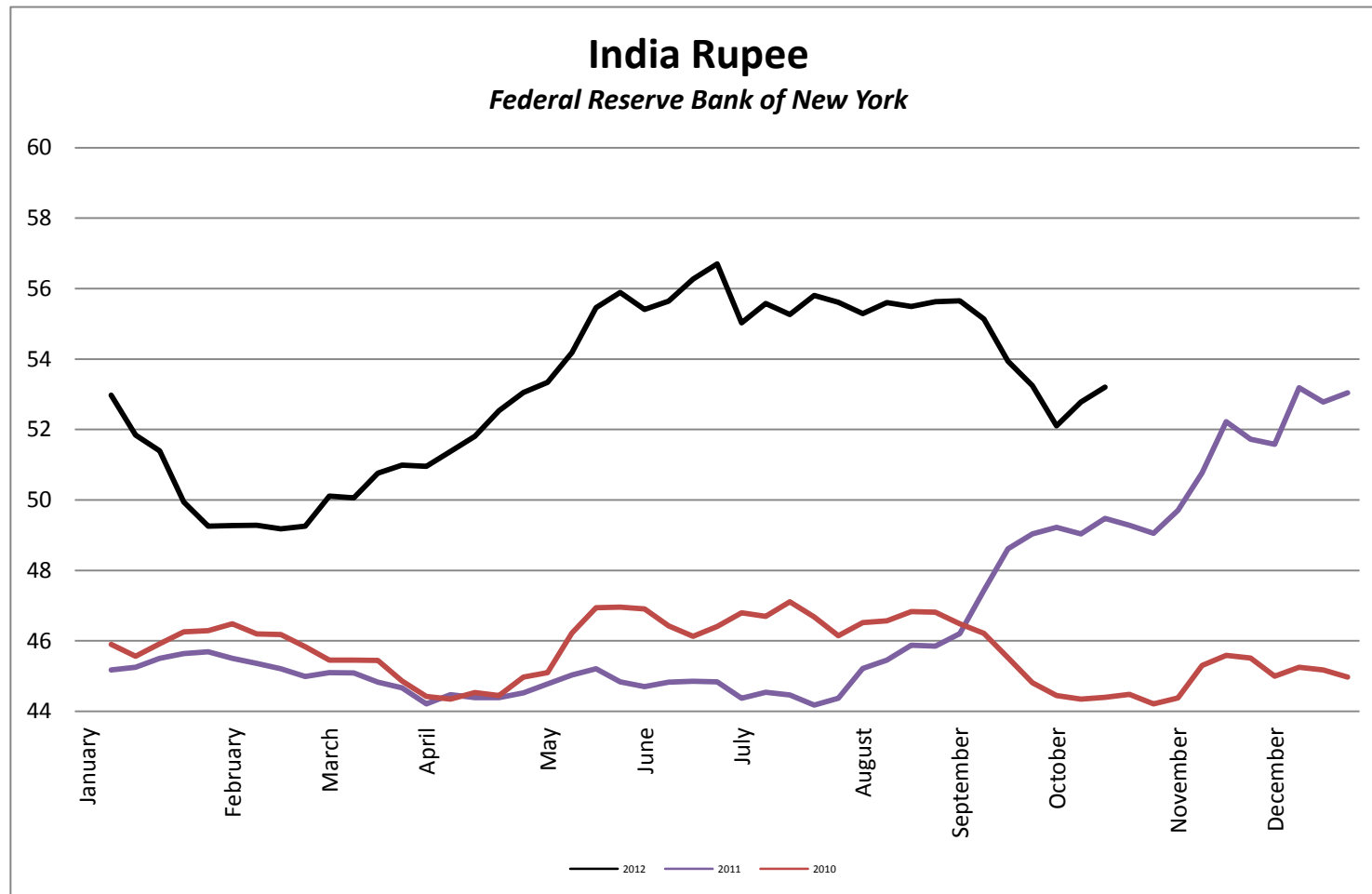


Foreign Exchange Rate

Vietnam Dong *Federal Reserve Bank of New York*



Foreign Exchange Rate



Foreign Exchange Rate

Peruvian New Sol

Federal Reserve Bank of New York

