

Key Commodity Report Weekly

September 3, 2012

Commodity Activity - Weekly Average

8/27/2012	This Week	Last Week	YTD Avg	Last Year	vs. Last Week	vs. Last Year
CME Group						
Corn	↓	801.70	817.55	670.02	751.25	-1.94% 6.72%
Soybean	↑	1752.1	1734.0	1431.4	1439.3	1.04% 21.73%
Soy Meal	↑	540.90	534.62	411.04	379.10	1.17% 42.68%
Soybean Oil	↑	0.5626	0.5560	0.5288	0.5804	1.19% -3.07%
Rough Rice	↓	15.01	15.41	15.11	17.96	-2.60% -16.43%
Wheat	↓	871.15	883.70	697.37	739.65	-1.42% 17.78%
Cheddar Barrel	↓	1.800	1.805	1.562	1.728	-0.28% 4.17%
Cheddar Block	↑	1.851	1.844	1.593	1.790	0.35% 3.38%
Milk Class III	↑	18.23	17.95	16.26	21.07	1.57% -13.46%
Butter AA	↑	1.829	1.800	1.514	2.070	1.58% -11.65%

Source: CME Group

USDA Weekly Prices

Live Cattle	↓	1.205	1.206	1.217	1.129	-0.07% 6.67%
Course Ground Beef	↓	2.259	2.305	2.122	1.853	-2.00% 21.94%
Live Hog	↓	0.4960	0.5400	0.5745	0.5860	-8.15% -15.36%
Pork Bellies	↓	1.27	1.42	1.18	1.15	-10.59% 10.15%
Chicken Whole (GA Dock)	↑	0.9550	0.9525	0.9319	0.8875	0.26% 7.61%
Crude Corn Oil	↑	58.70	58.00	57.13	60.00	1.21% -2.17%
Crude Peanut Oil	↑	126.00	126.00	118.23	107.00	0.00% 17.76%

Source: USDA

NYMEX Futures & Retail

Crude Oil	↓	95.68	96.47	96.45	88.27	-0.82% 8.39%
Heating Oil No.2 Spot	↑	311.95	310.34	307.00	303.46	0.52% 2.80%
On Highway Diesel	↑	408.90	402.60	392.58	382.00	1.56% 7.04%
On Highway Gasoline	↑	377.60	374.40	362.61	362.70	0.85% 4.11%
Natural Gas	↓	2.690	2.776	2.544	3.948	-3.10% -31.86%

Source: New York Mercantile Exchange

Federal Reserve

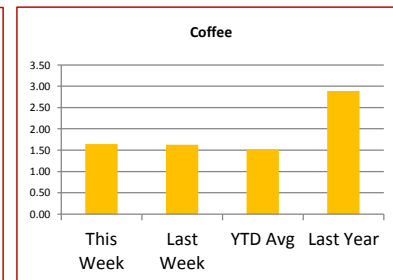
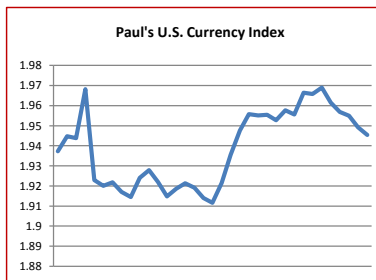
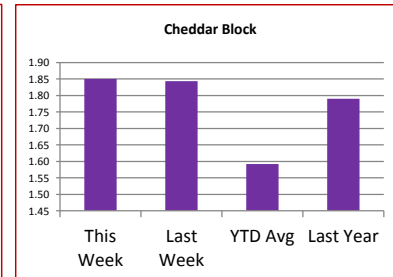
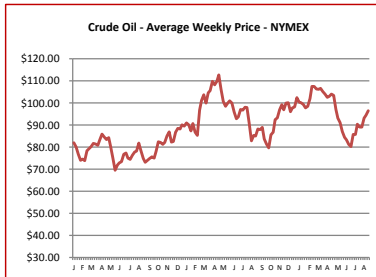
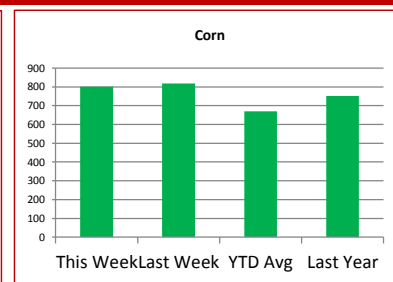
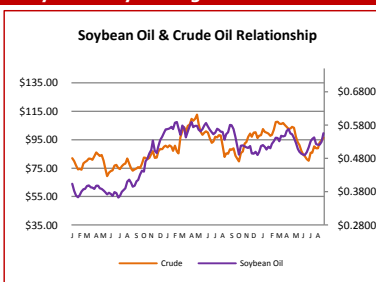
*Euro	↑	1.2549	1.2455	1.2727	1.4377	0.75% -12.71%
*British Pound	↑	1.5826	1.5788	1.5520	1.6281	0.24% -2.79%
Canadian Dollar	↓	0.9887	0.9906	1.0056	0.9785	-0.19% 1.04%
Chinese Yuan	↓	6.353	6.355	6.326	6.381	-0.03% -0.44%
Swiss Frank	↓	0.957	0.964	0.941	0.804	-0.76% 19.03%

Source: Federal Reserve Bank of New York

NYBOT Futures

Sugar 16	↓	26.71	29.05	36.41	41.51	-8.06% -35.65%
Coffee	↑	1.6455	1.6260	1.5125	2.8920	1.20% -43.10%

Source: Intercontinental Exchange



Market Commentary

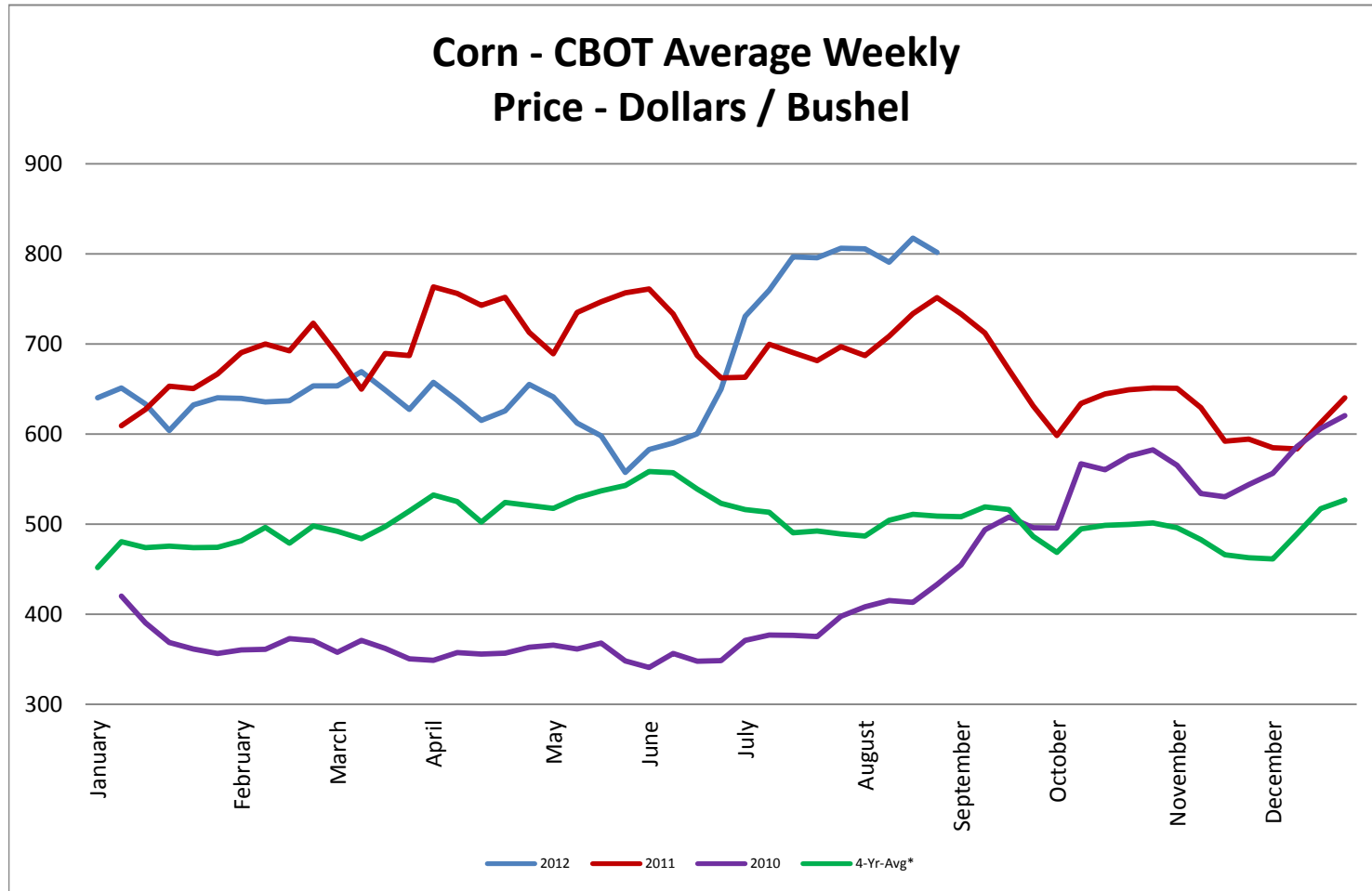
Commentary: There have been many reports regarding the beginning of the end for soybeans. What do I mean? The final stage of the soybean plant's life, is death. The plant must die before it is harvested. That last stage has begun in many growing areas effectively ceasing any further development of the soybean plants and effectively ceasing any more pod filling. Isaac did run up into the growing area and dropped 4-6" of rain and could have actually hurt the crop at this point in some areas. It may have helped in others where plants had not reached full maturity. It is still expected that the USDA is likely to once again reduce the bushels per acre for soybeans. Traders have held off somewhat from putting on any long positions for corn. They expect another reduction for corn bushels also from the USDA. The report is due out next week. Wheat has run up lately as we look at the Australian crop. They are having some early drought issues there. Also, Russia, the fourth largest exporter of wheat, is also experiencing some drought, and may be looking to halt exports. As a result, wheat prices are sharply higher.

Corn futures closed between \$7.89-1/2 and \$8.11-1/2 per bushel, ending the week at \$8.02-3/4.
 Soybean futures closed between \$17.29-3/4 and \$17.70-1/4 per bushel, ending the week at \$17.64-1/2.
 Soybean meal futures closed between \$531.80 and \$548.10 per short ton, ending the week at \$547.10.
 Soybean oil futures closed between \$0.5573 and \$0.5664 per pound, ending the week at \$0.5642.
 Wheat futures closed between \$8.54-3/4 and \$8.85-1/2 per bushel, ending the week at \$8.70.

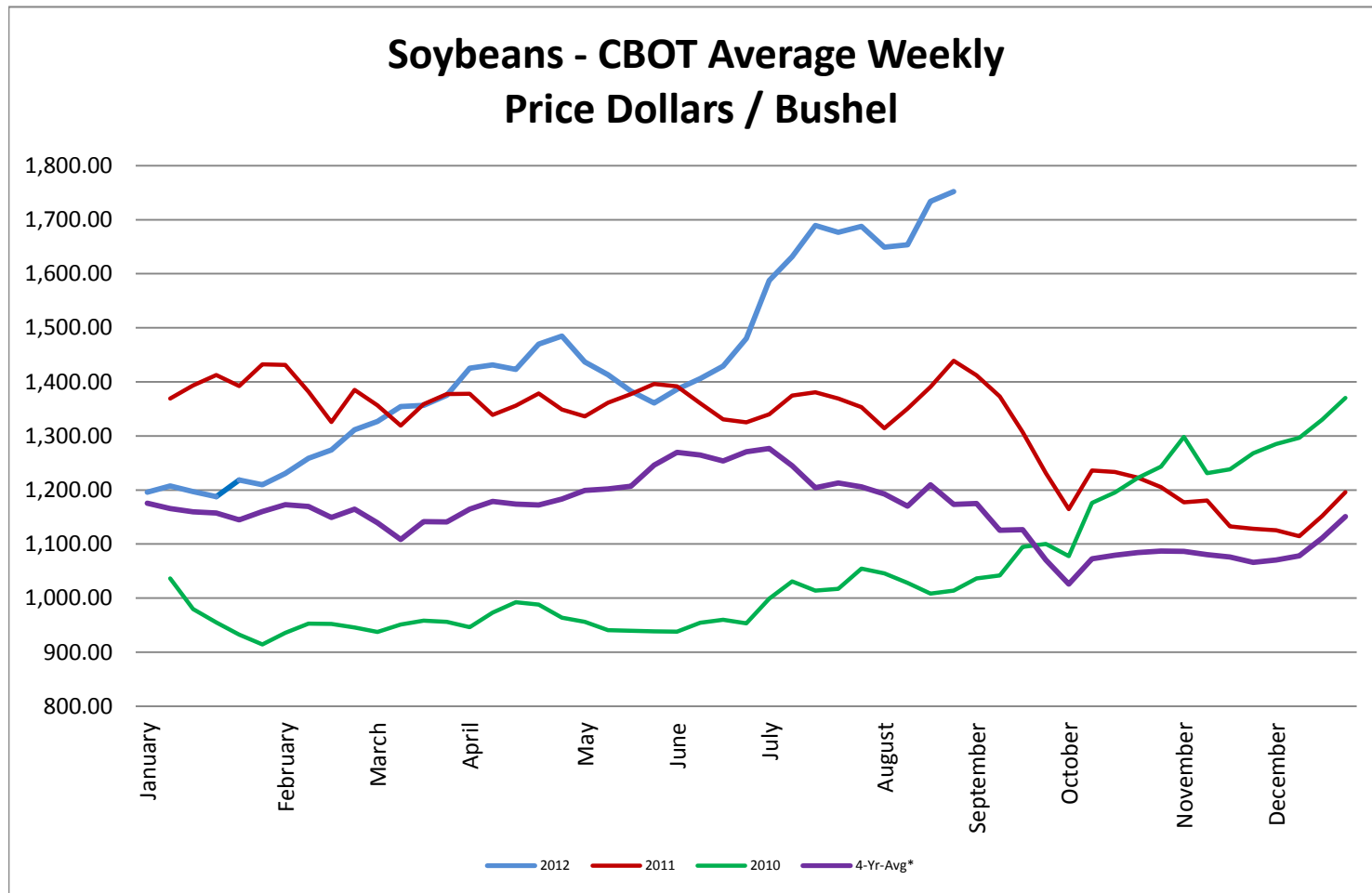
* Used as the indexing unit of measure for this exchange rate

Commodity Information: Commodity information found in this sheet is publically available. It can be found from numerous sources, all of which are noted. This report is for informational purposes only. Please do not make hedging or buying decisions based on this report. Please note that rounding can affect the percent of change values.

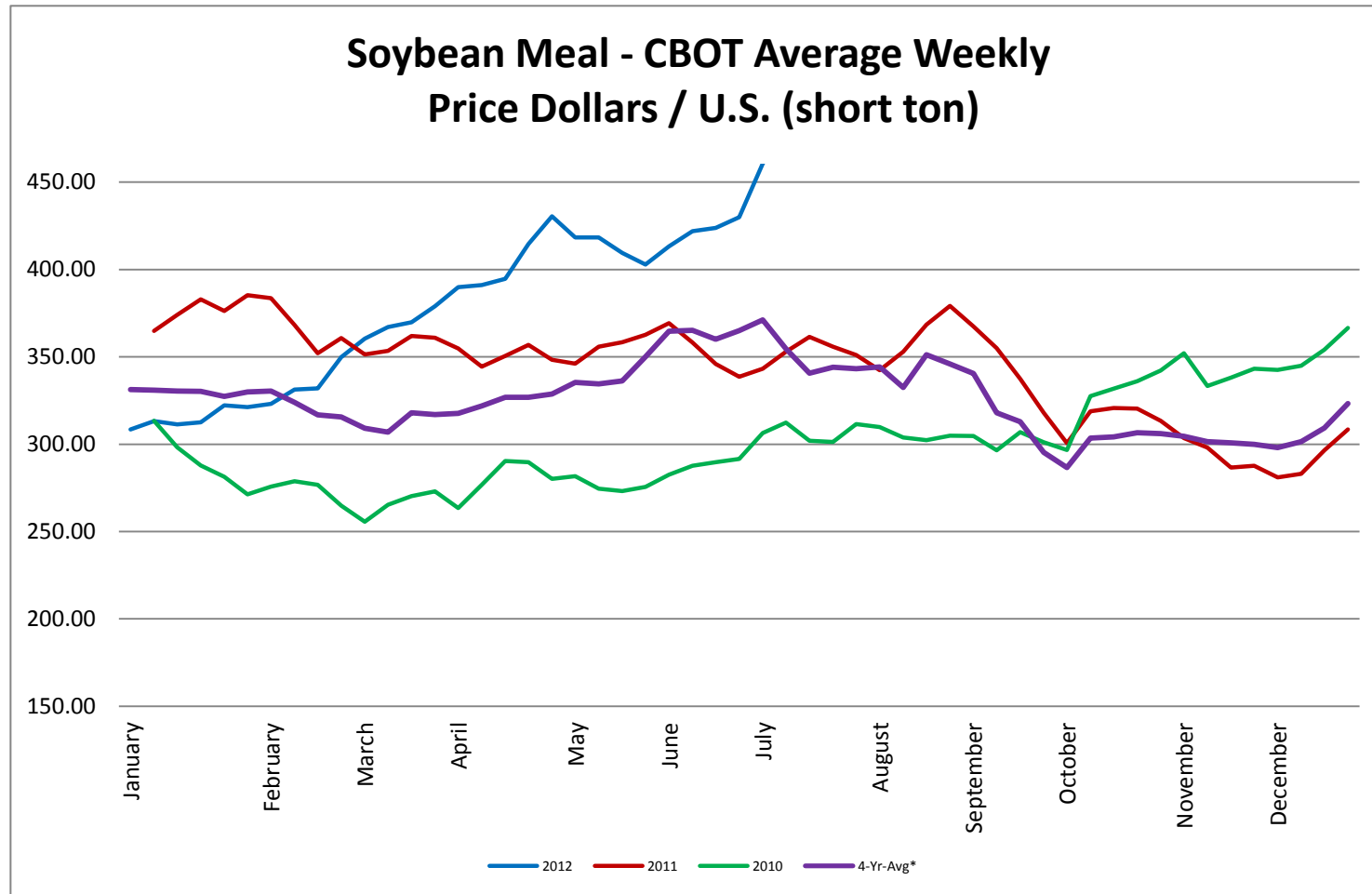
Corn - CBOT Weekly Futures Price



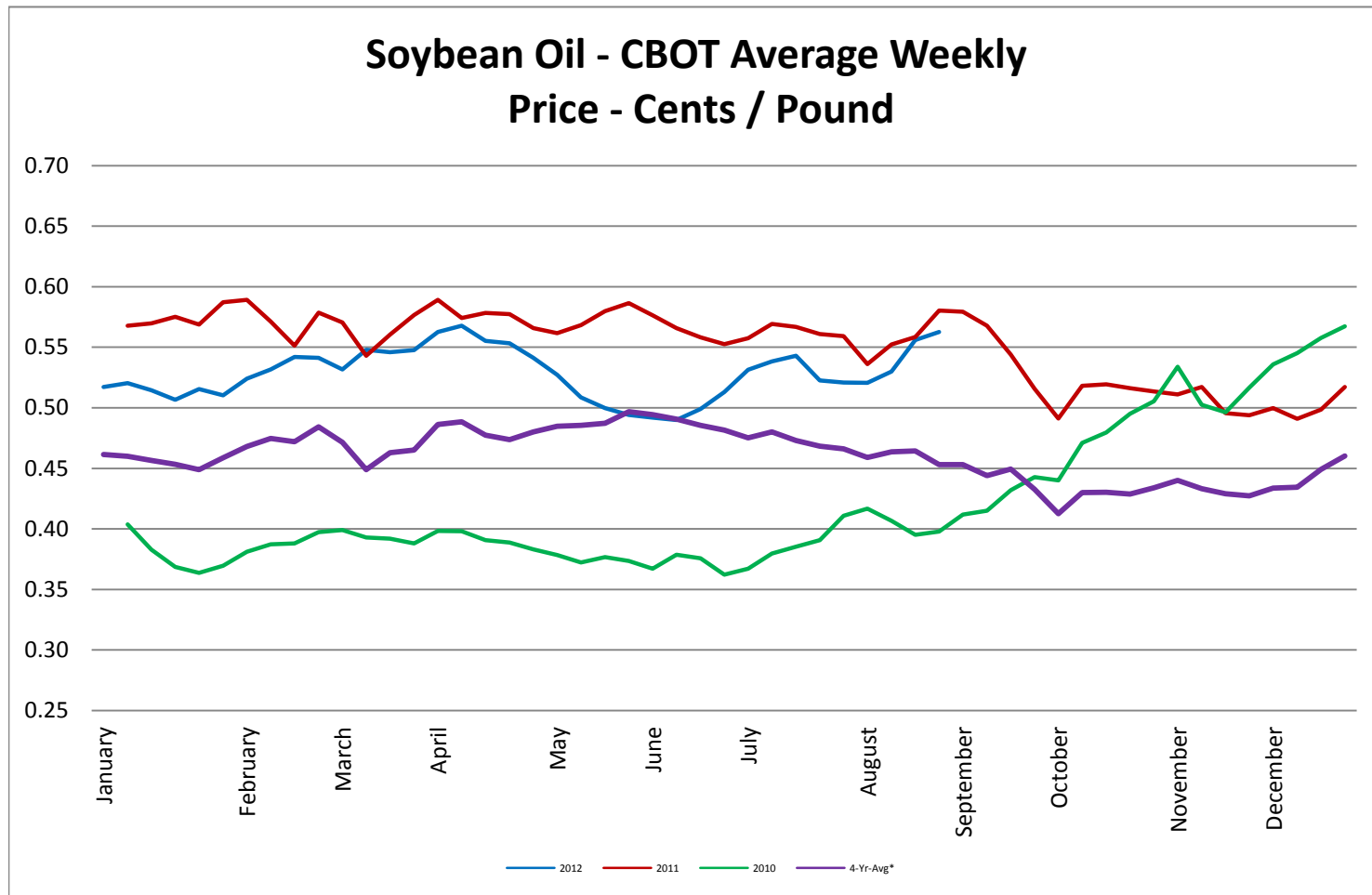
Soybeans - CBOT Weekly Average Price - Dollars / Bushel



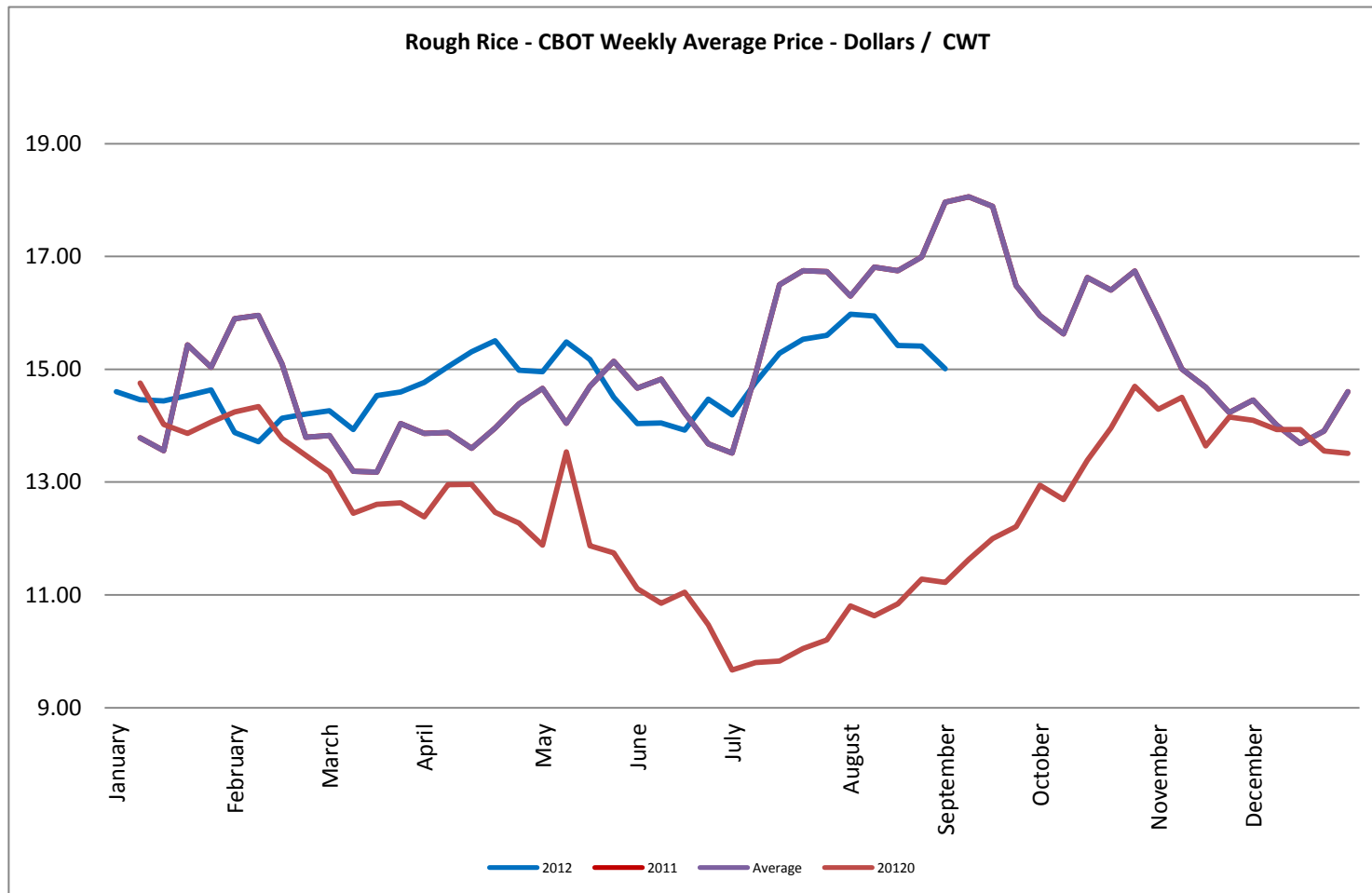
Soybean Meal - CBOT Weekly Average Price - Dollars / US Ton



Soybean Oil - CBOT Weekly Average Price - Cents / Pound

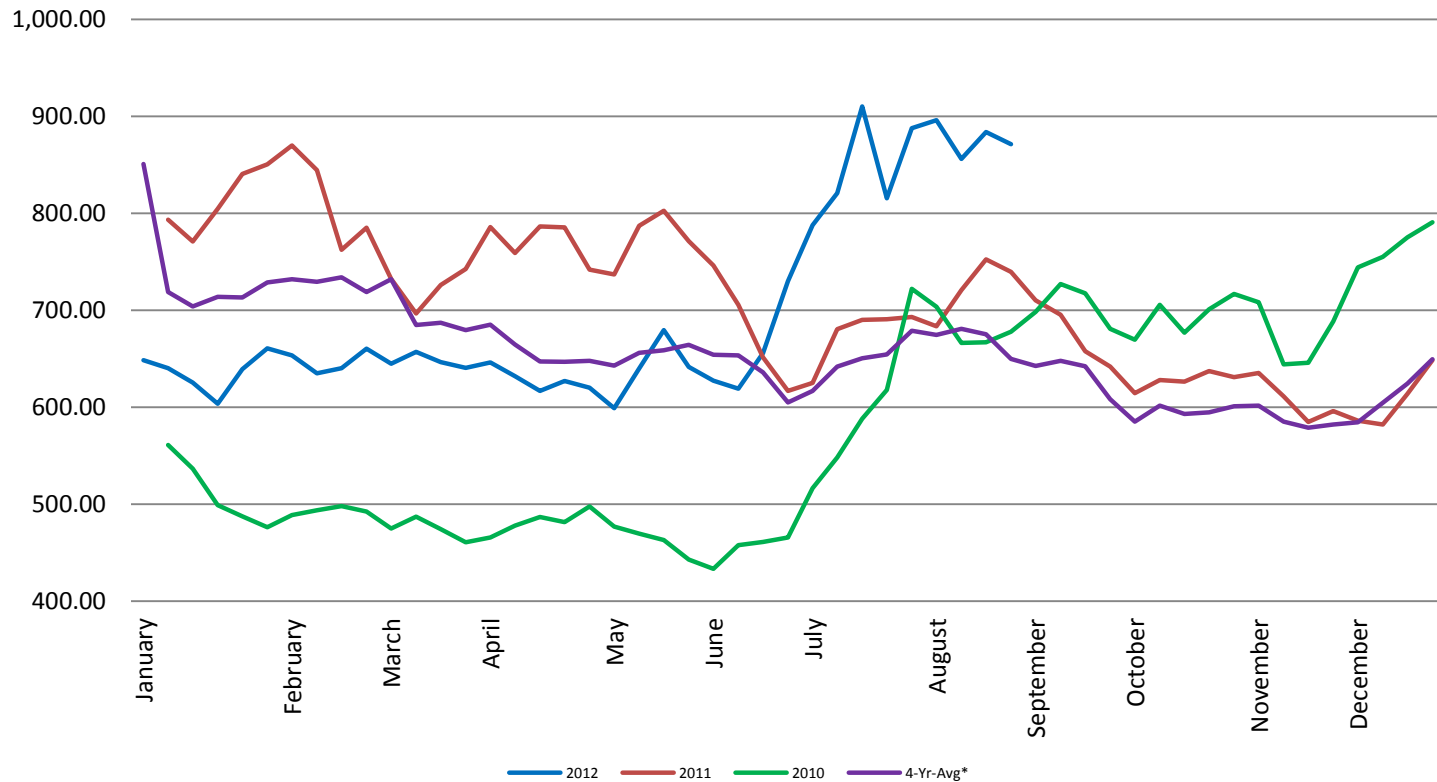


Rough Rice - CBOT Weekly Average Price - Dollars / CWT

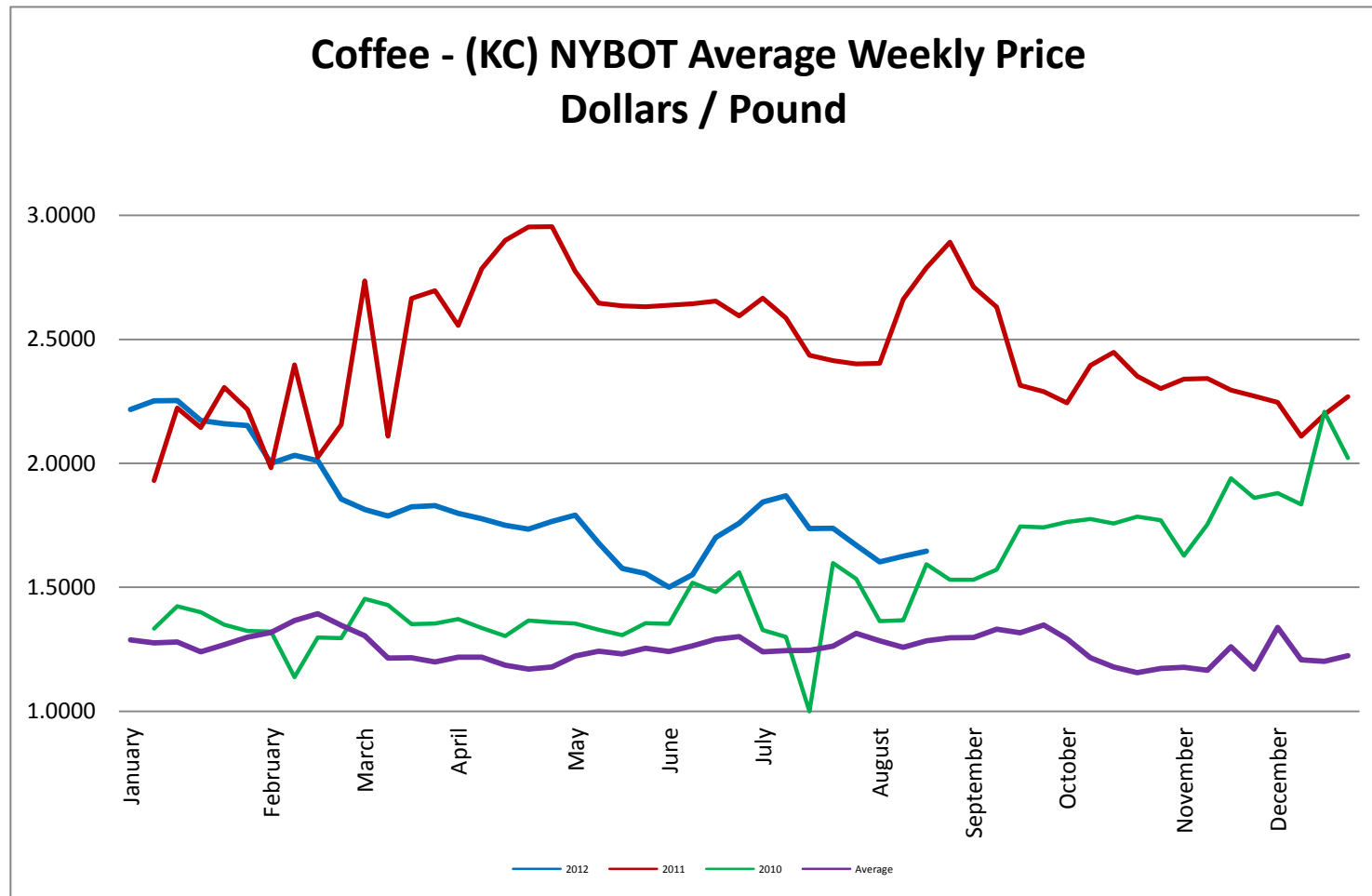


Wheat - CBOT Weekly Average Price - Dollars / Bushel

Wheat - CBOT Average Weekly
Price - Dollars / Bushel

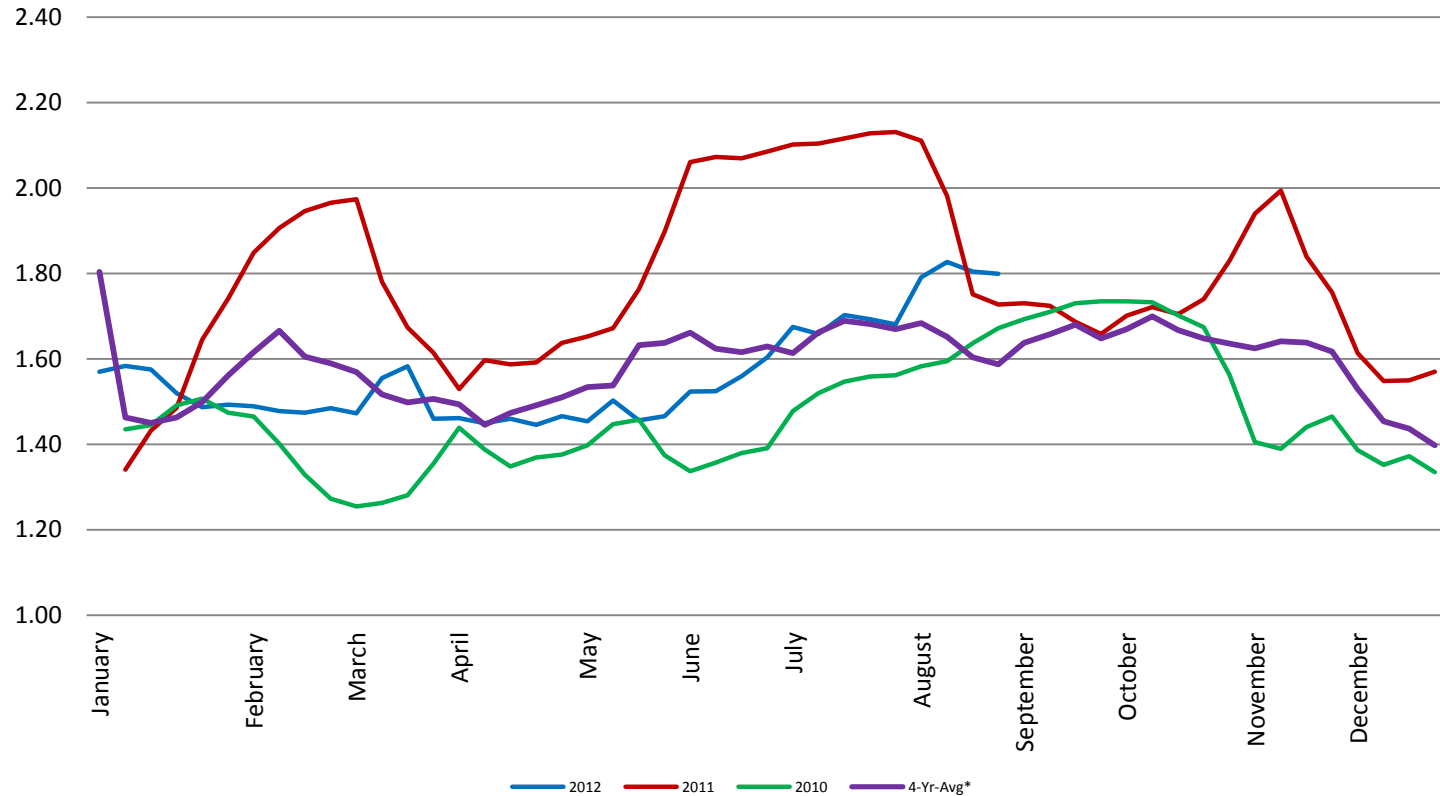


Coffee - (KC) NYBOT Average Weekly Price - Dollars per Pound



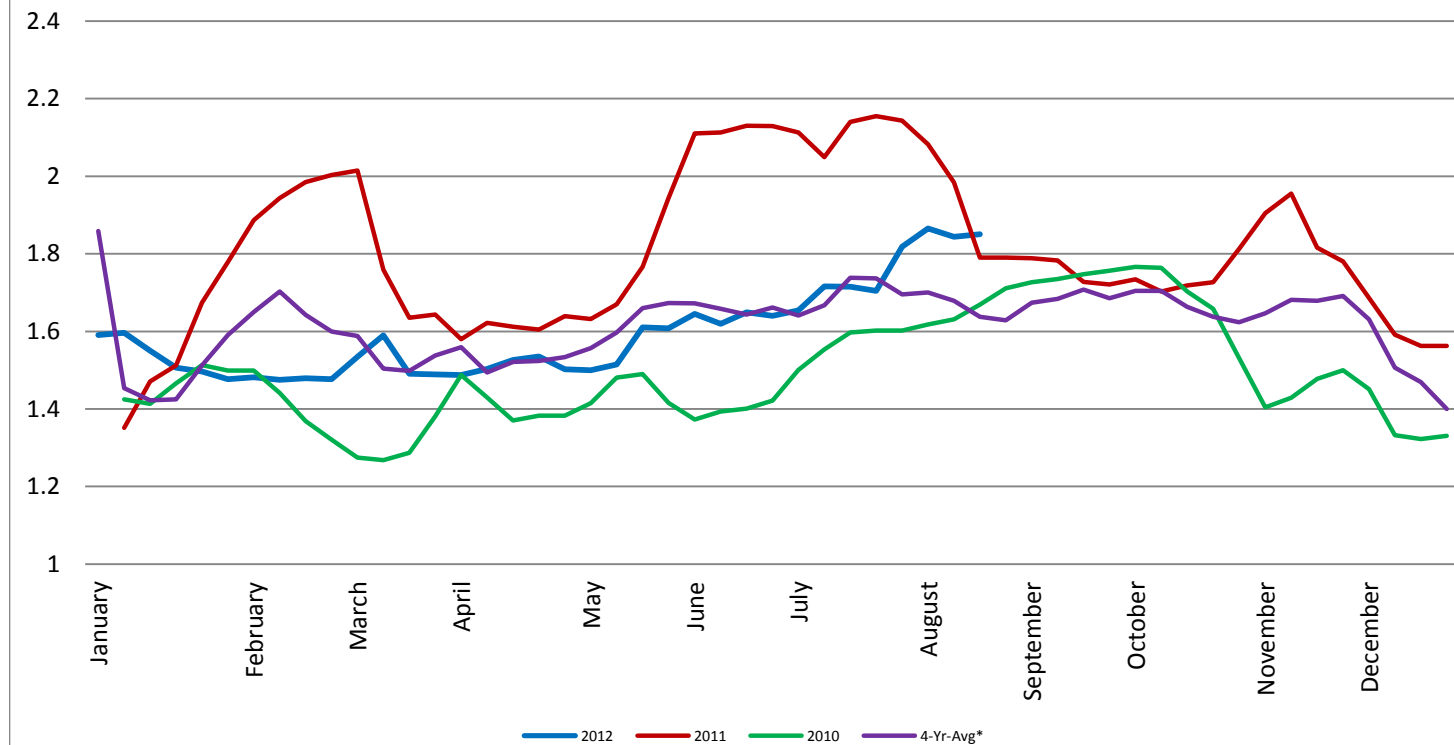
Barrel Cheddar - CME Average Weekly Price / Pound

Barrel Cheddar - CME Average Weekly Dollars per Pound

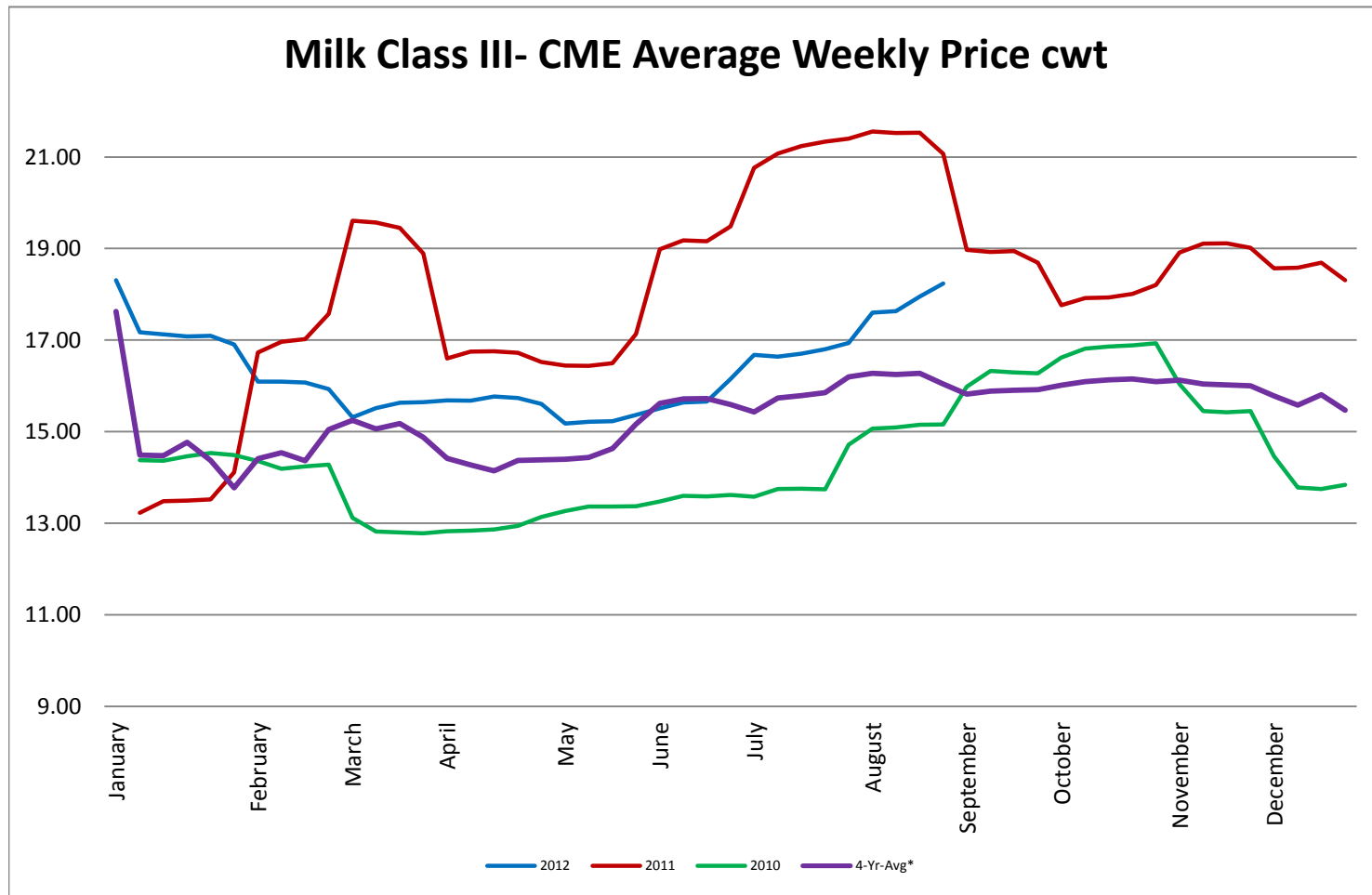


40 LB Block Cheddar - CME Average Weekly Price / Pound

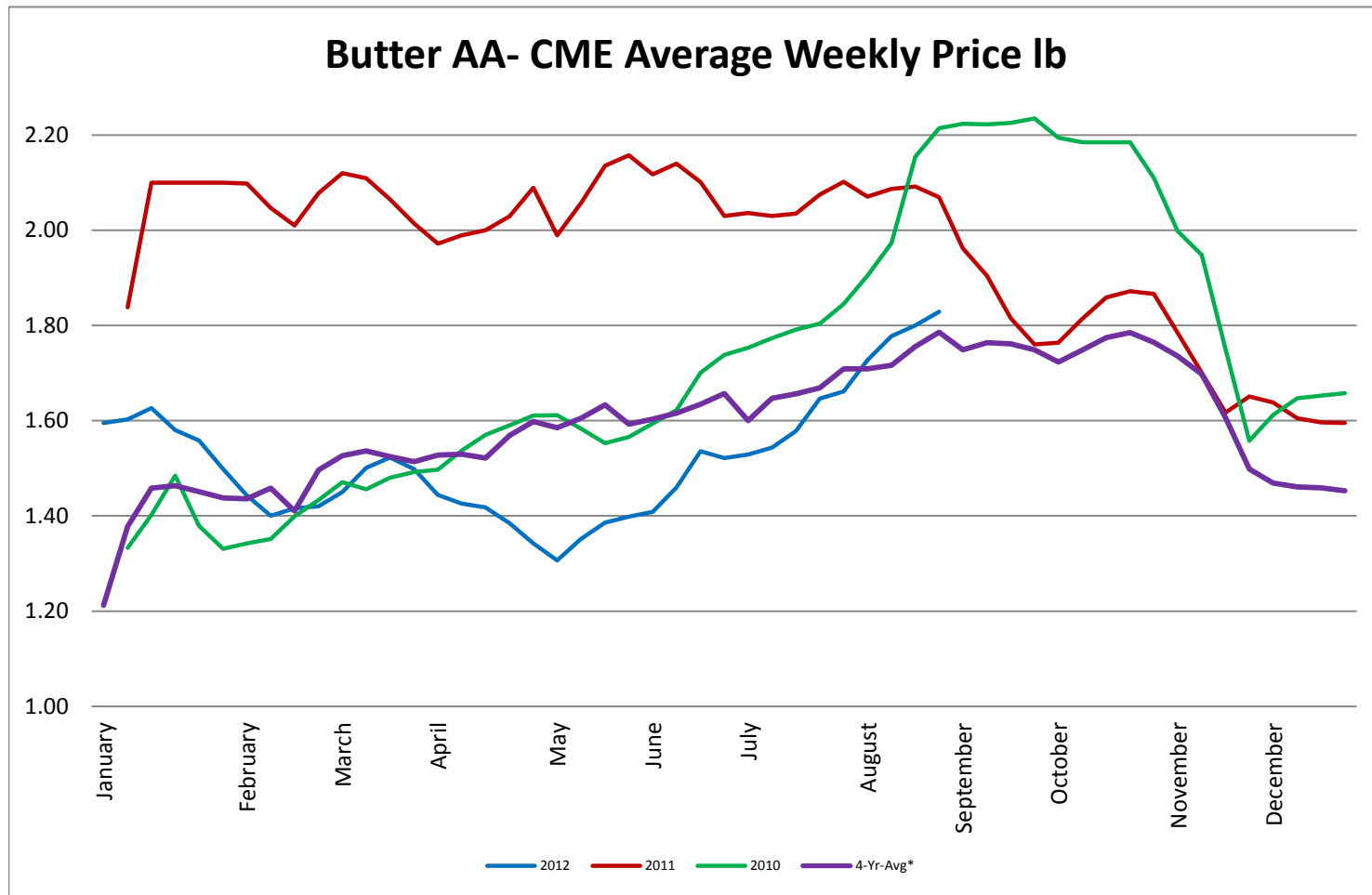
Block Cheddar 40 #- CME Average Weekly Dollars per Pound



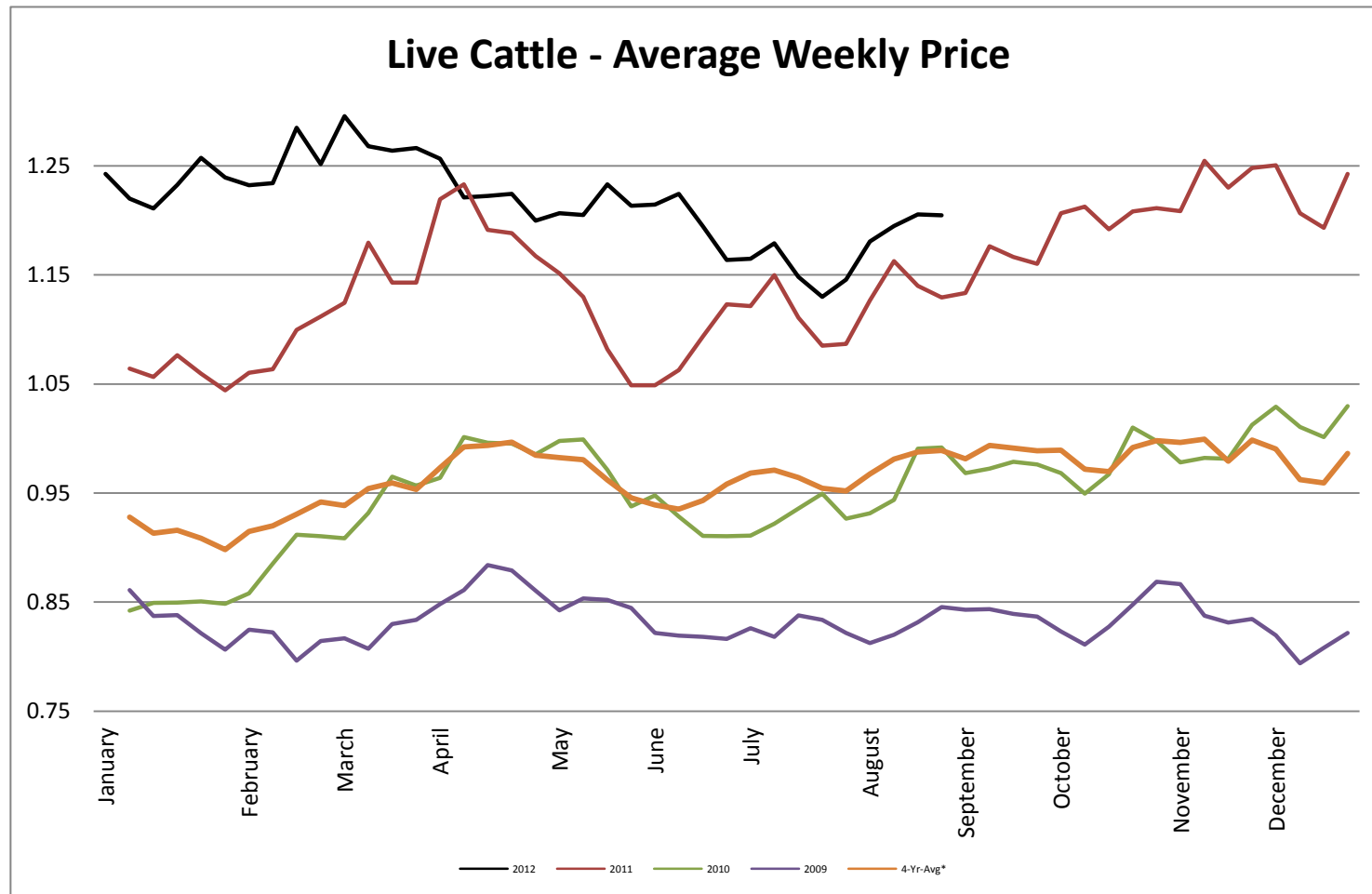
Milk Class III - CME Average Weekly Price CWT



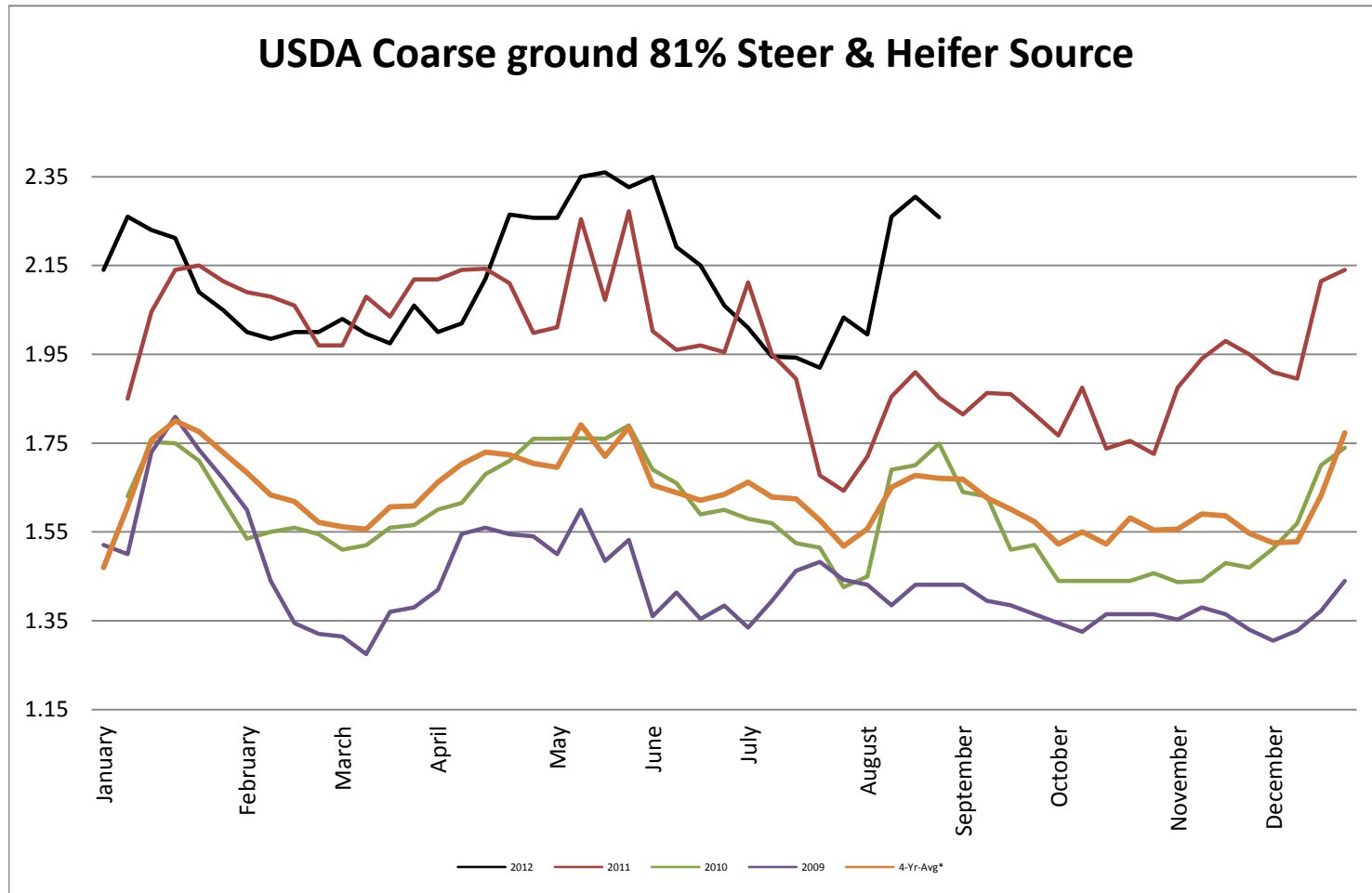
Butter AA - CME Average Weekly Price lb



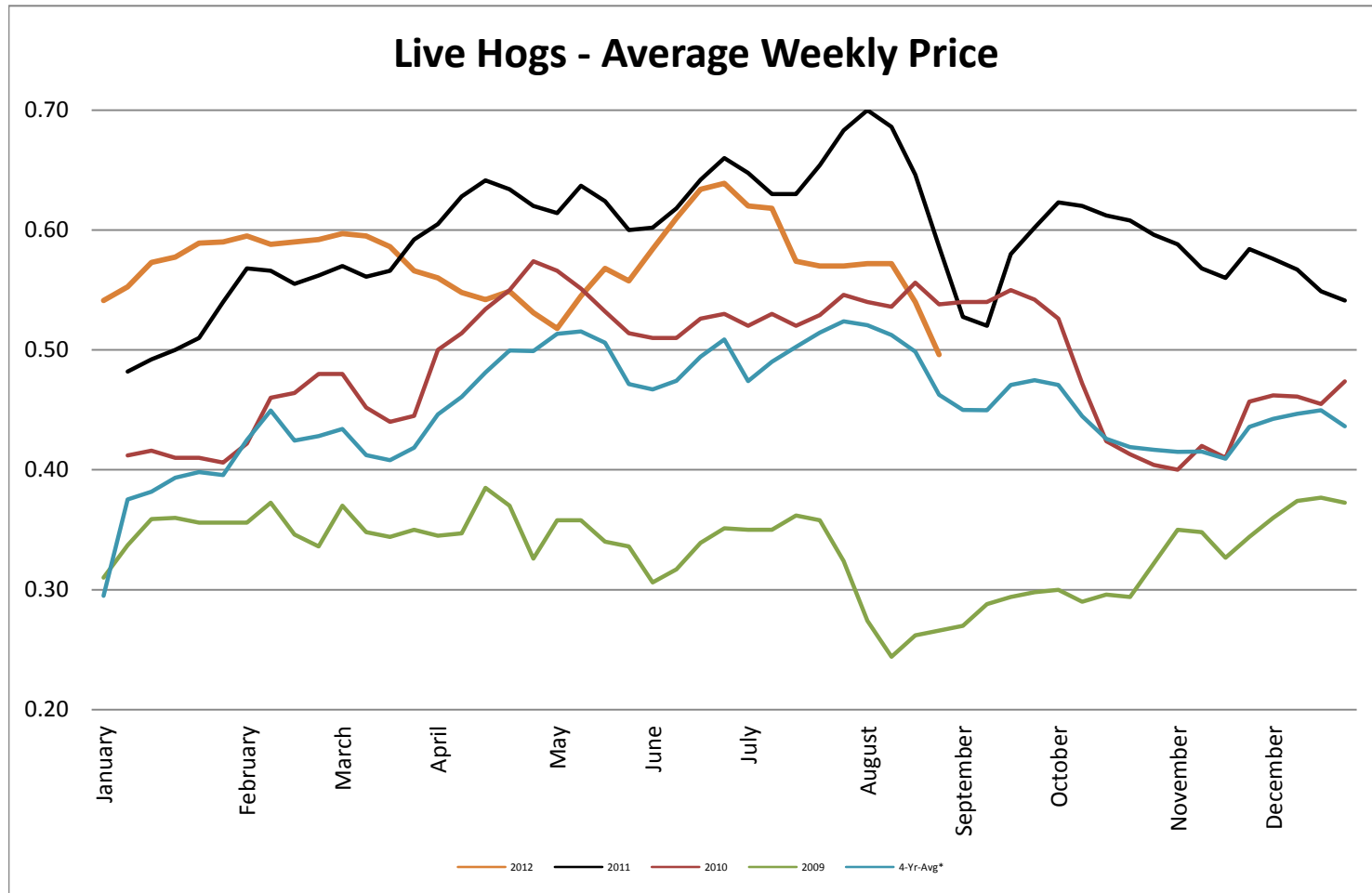
Live Cattle - Average Weekly Price USDA - 6 State Average



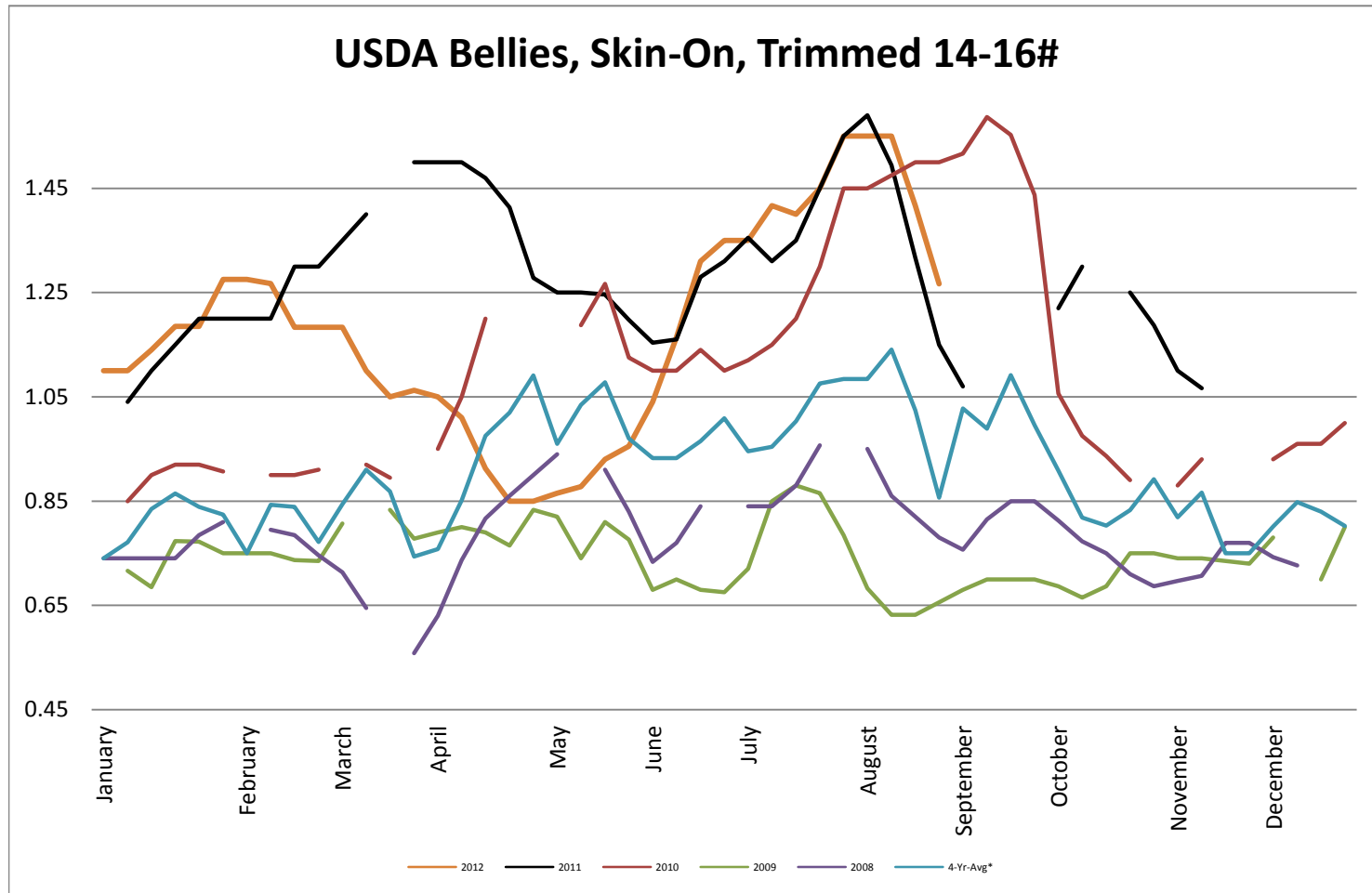
USDA Coarse ground 81% Steer & Heifer Source



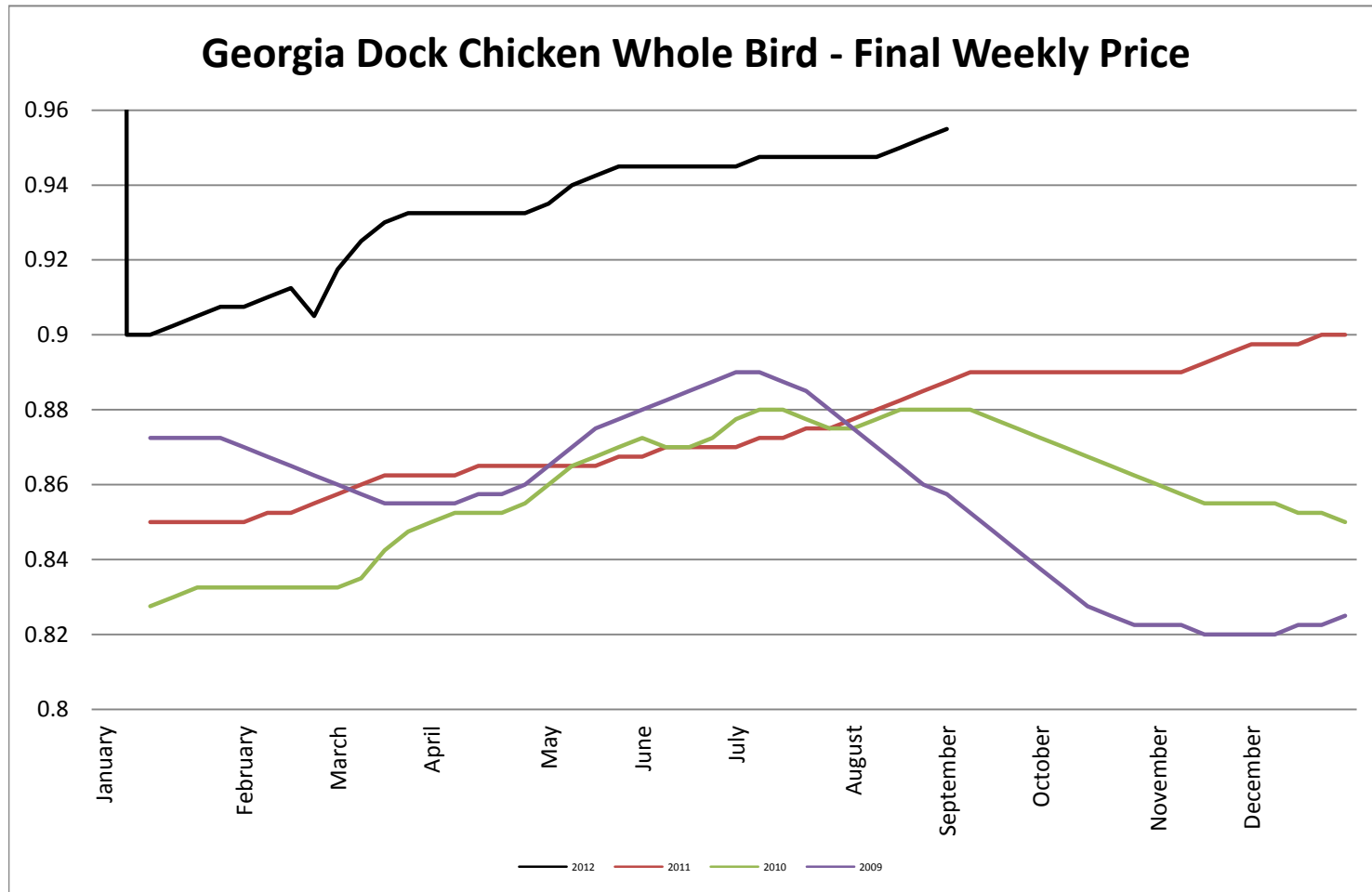
USDA Live Hogs - Average Weekly Price



USDA Bellies, Skin-On, Trimmed 14-16#

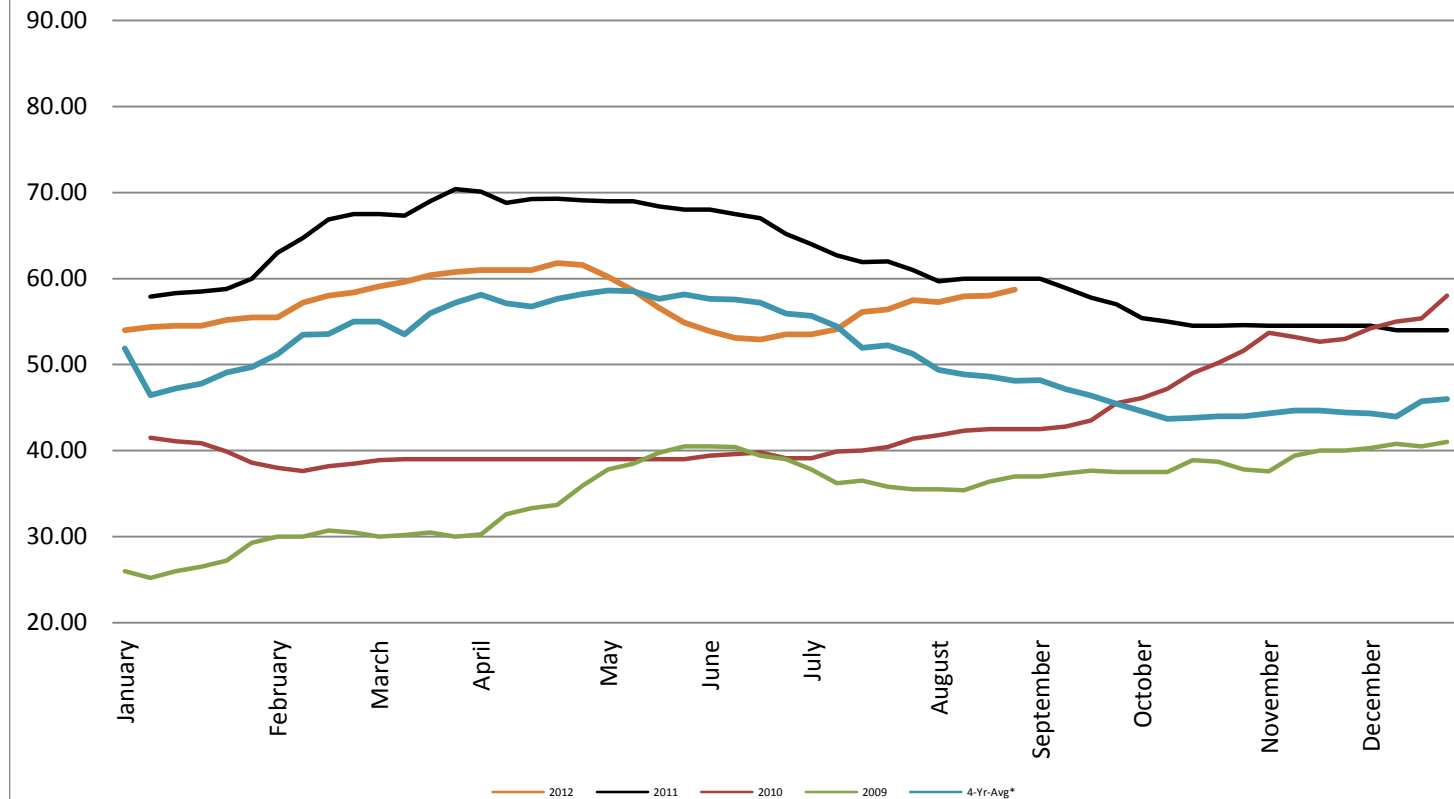


Georgia Dock Chicken - Final Weekly Price

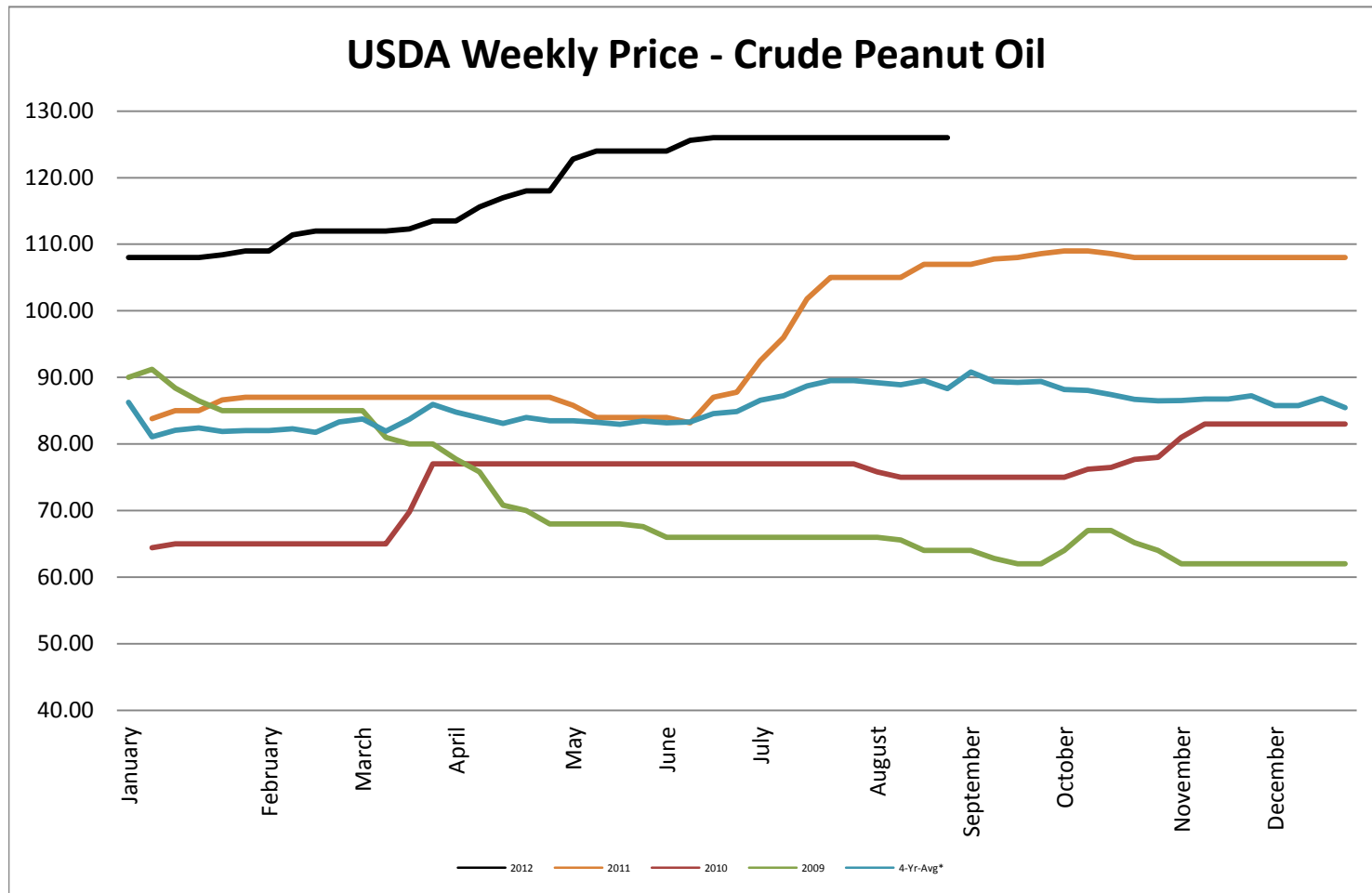


USDA Weekly Price - Crude Corn Oil

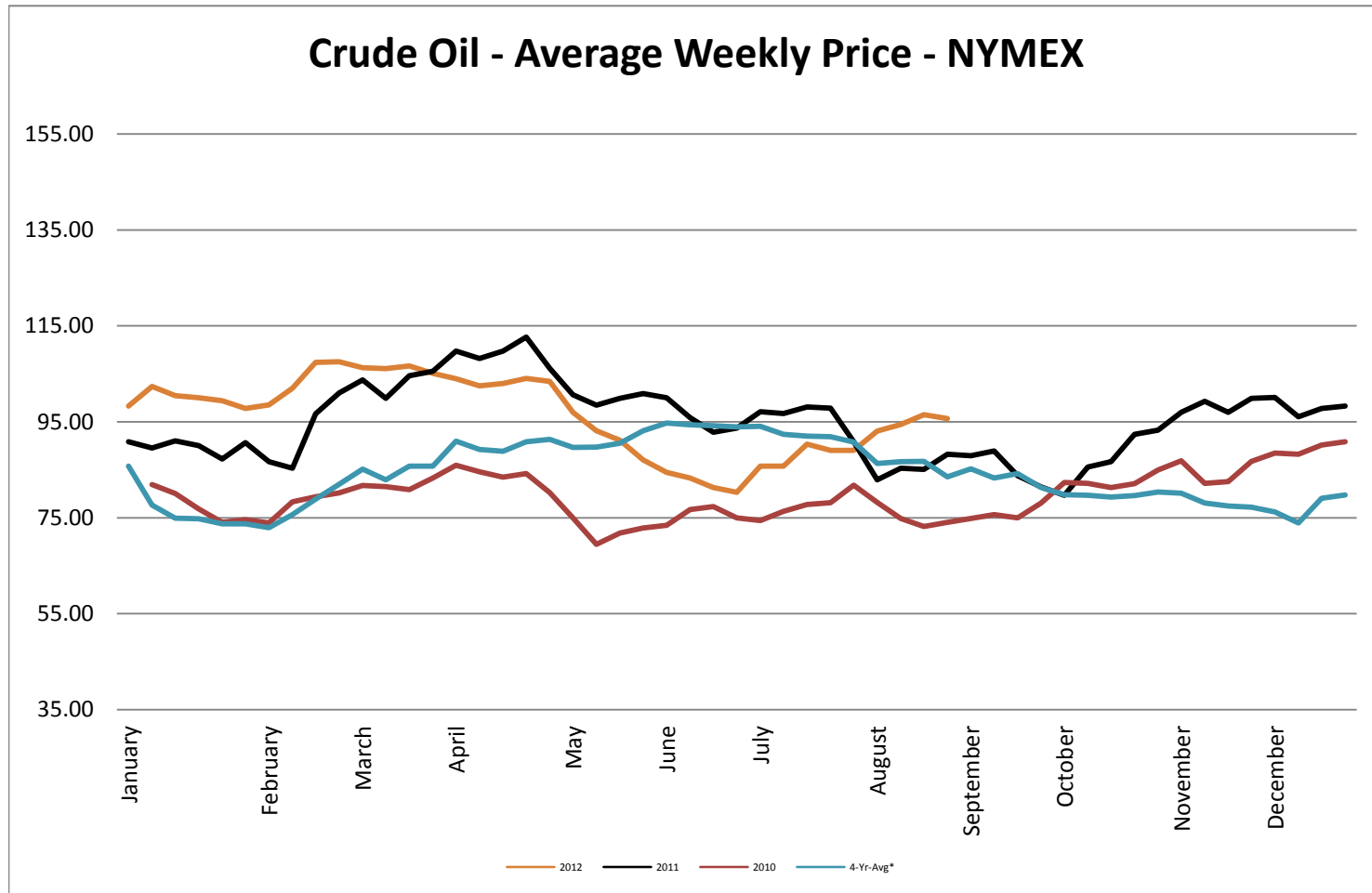
USDA Illinois Weekly Price - Crude Corn Oil

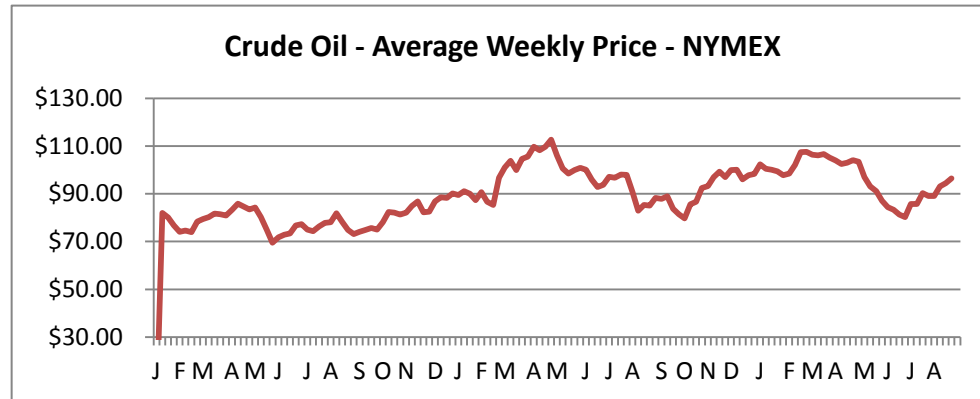


USDA Weekly Price - Crude Peanut Oil

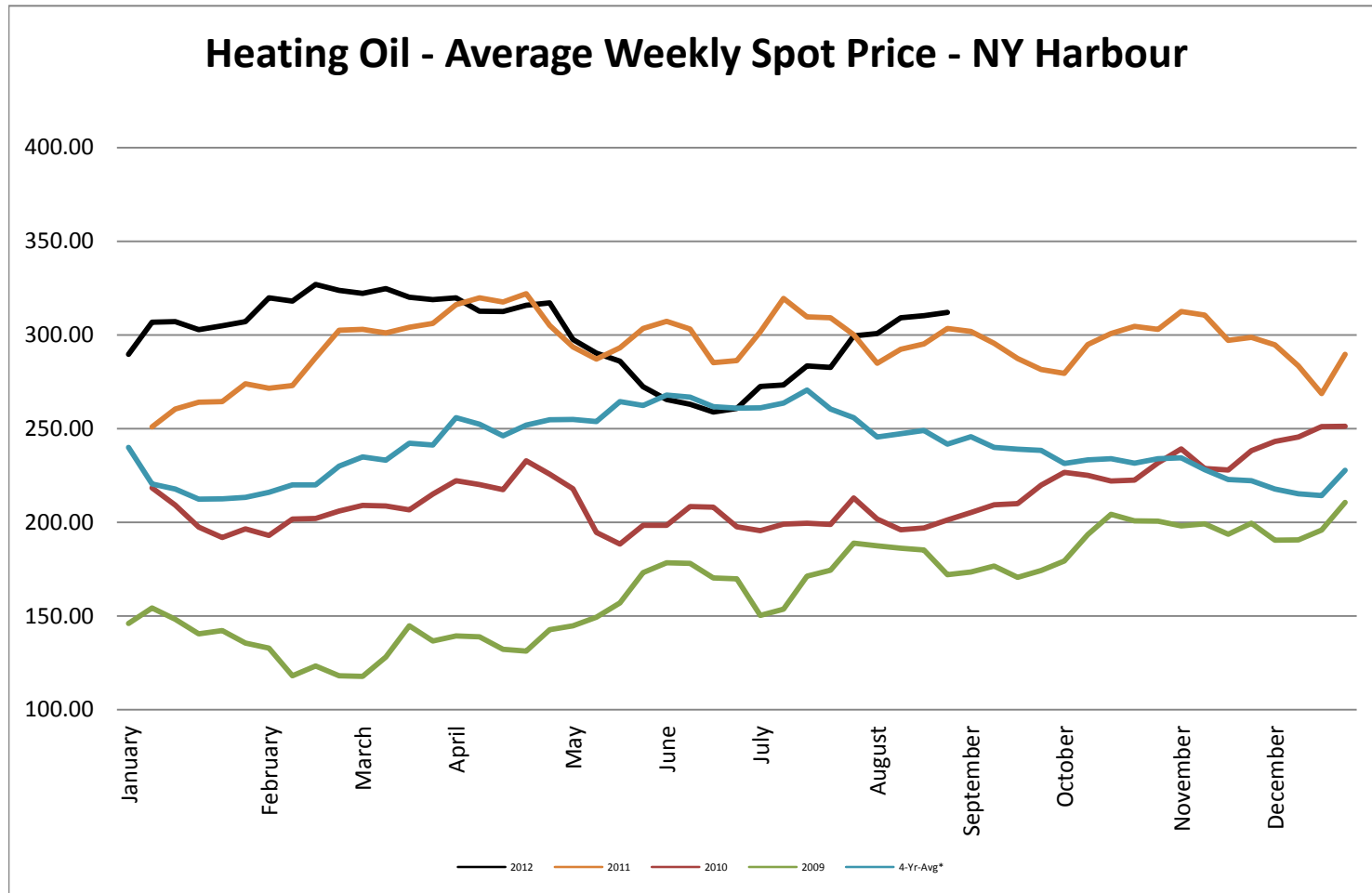


Crude Oil - Average Weekly Price - NYMEX

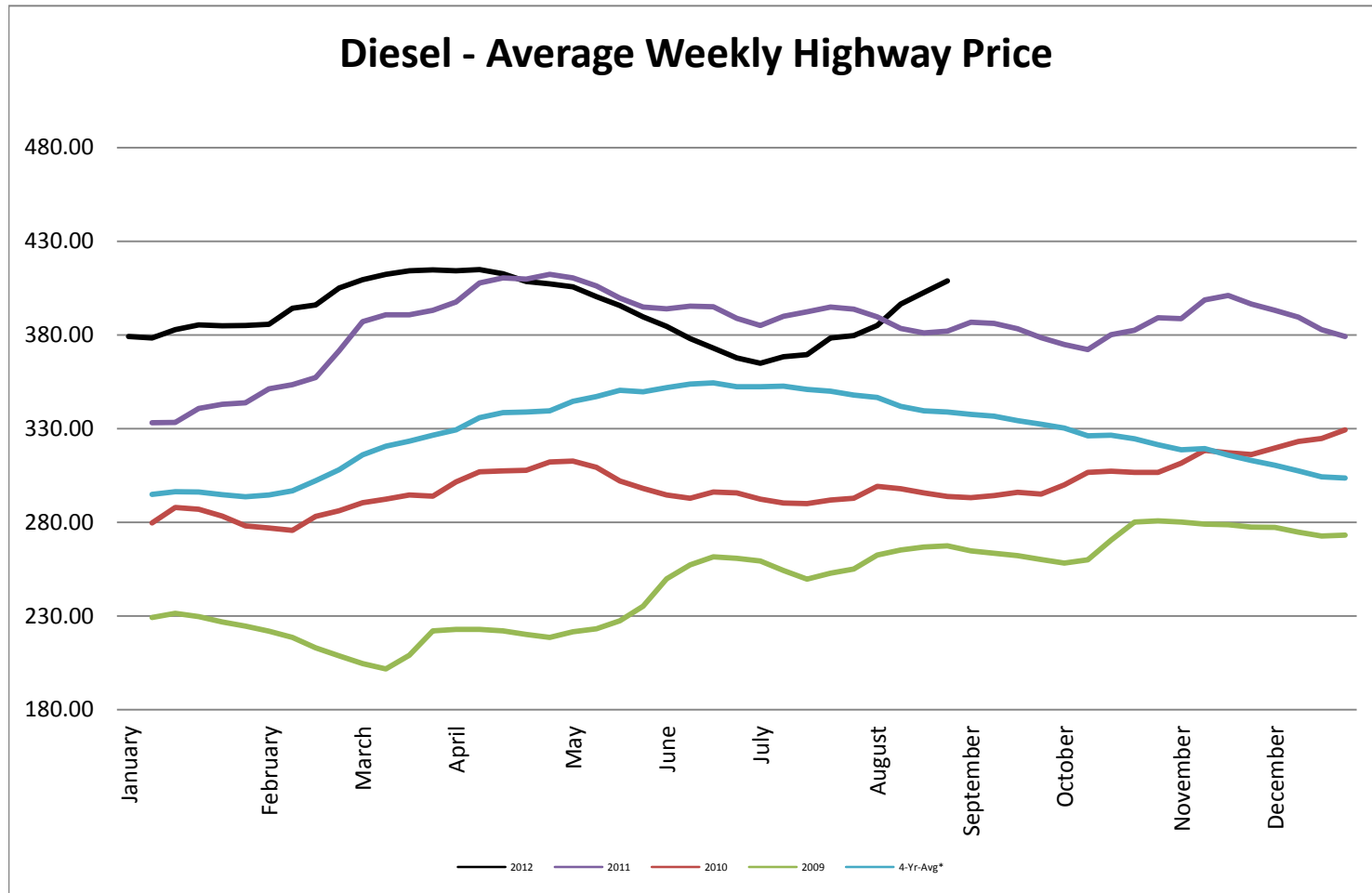




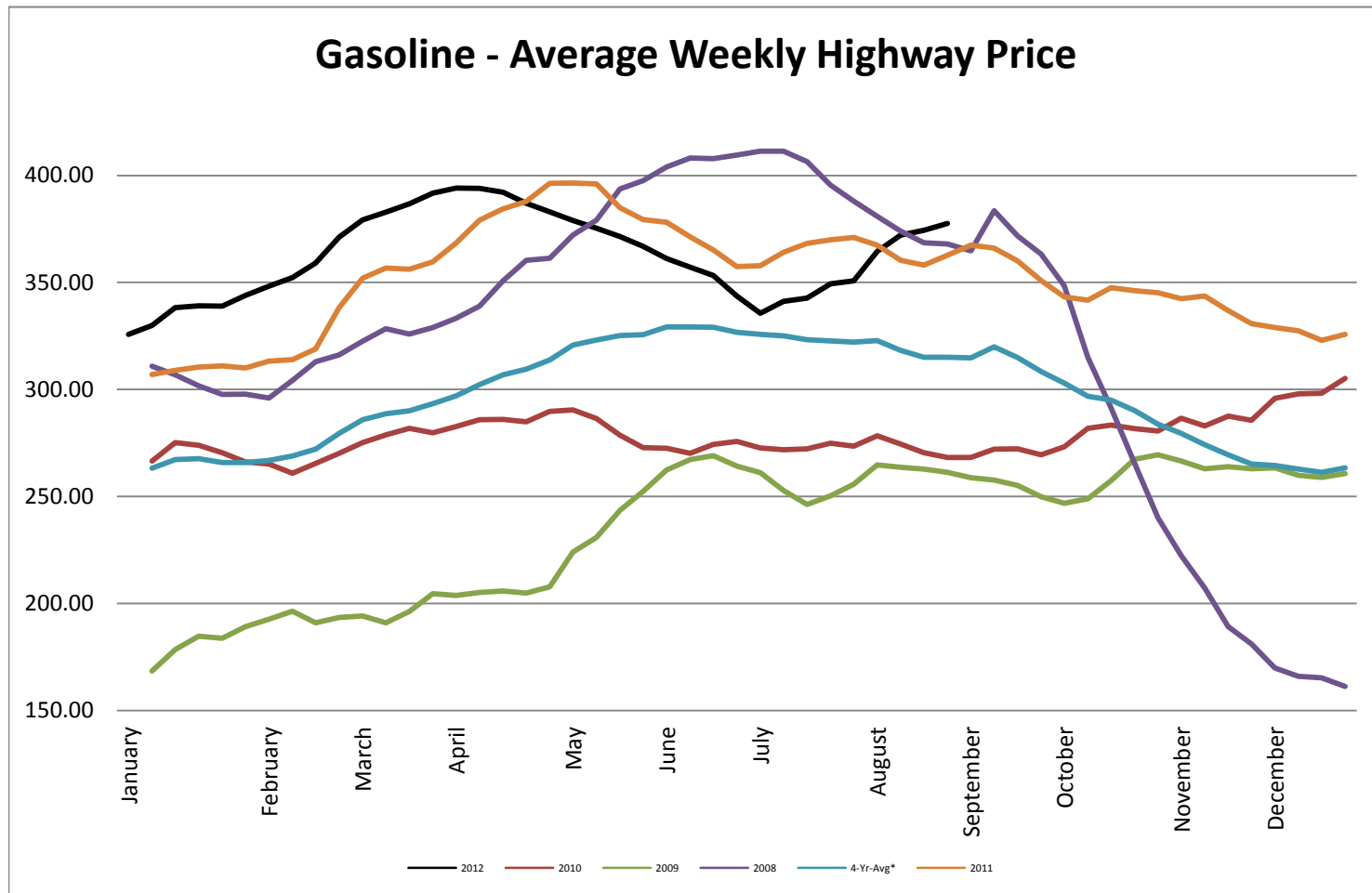
Heating Oil - Average Weekly Spot Price - NY Harbour



Diesel - Average Weekly Highway Price

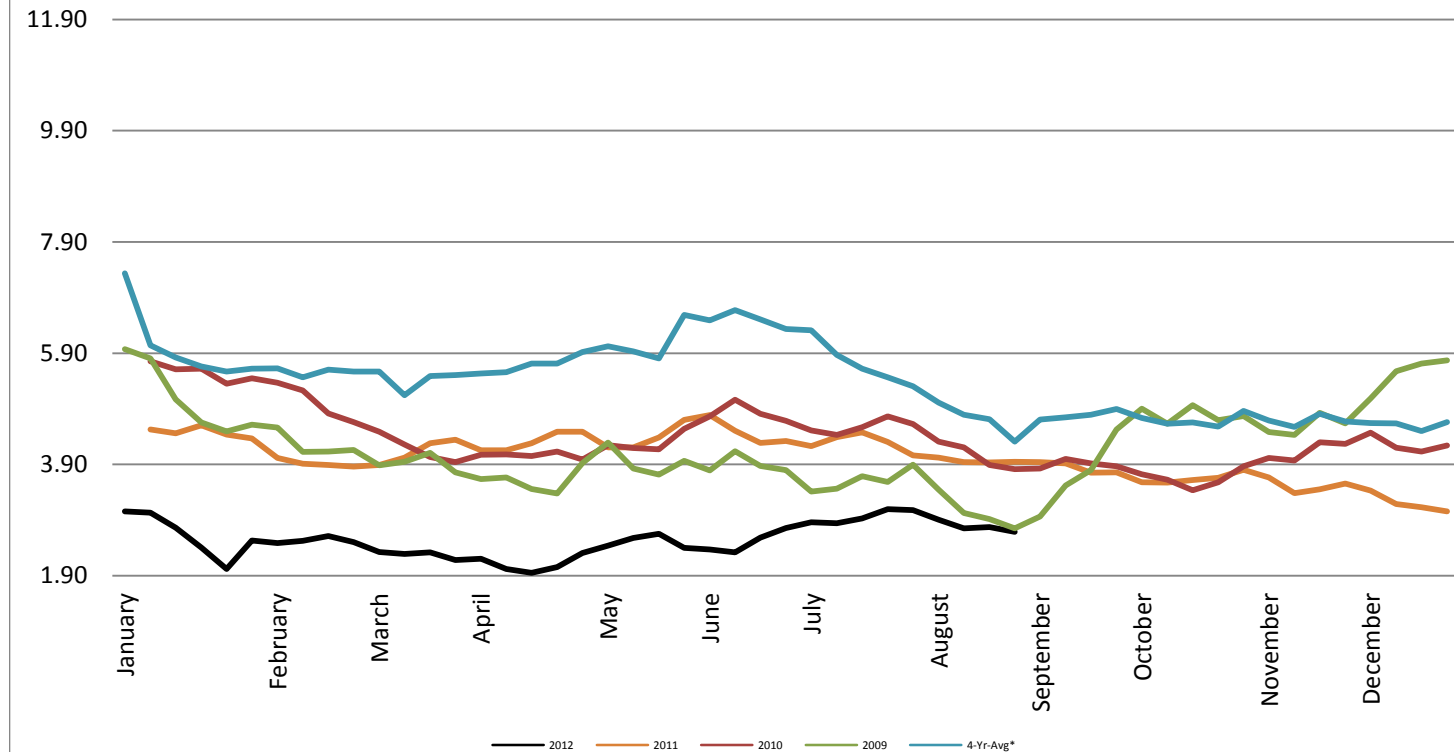


Gasoline Unleaded - Average Weekly Highway Price

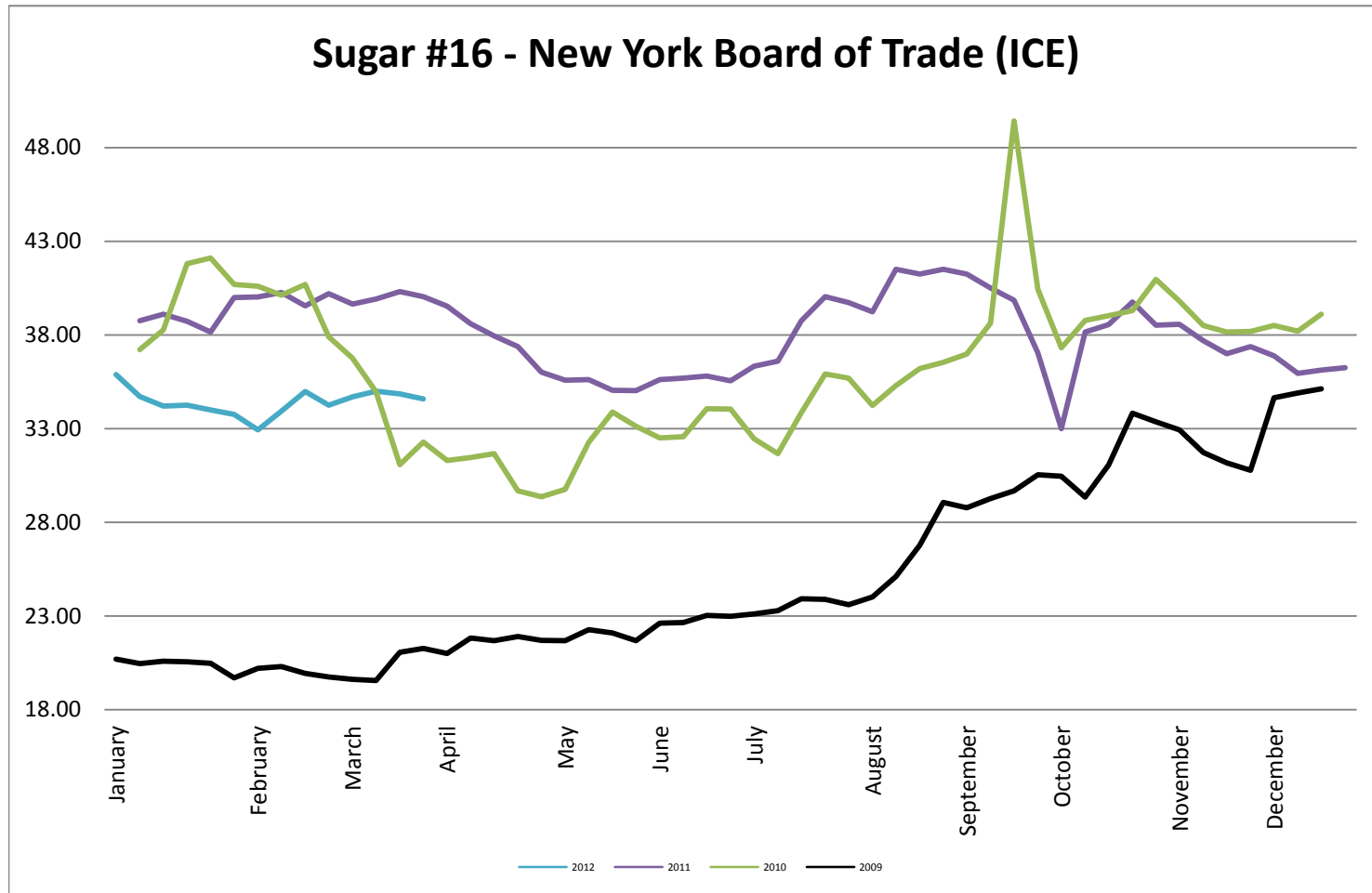


Natural Gas Futures - New York Mercantile Exchange

Natural Gas Futures - New York Mercantile Exchange



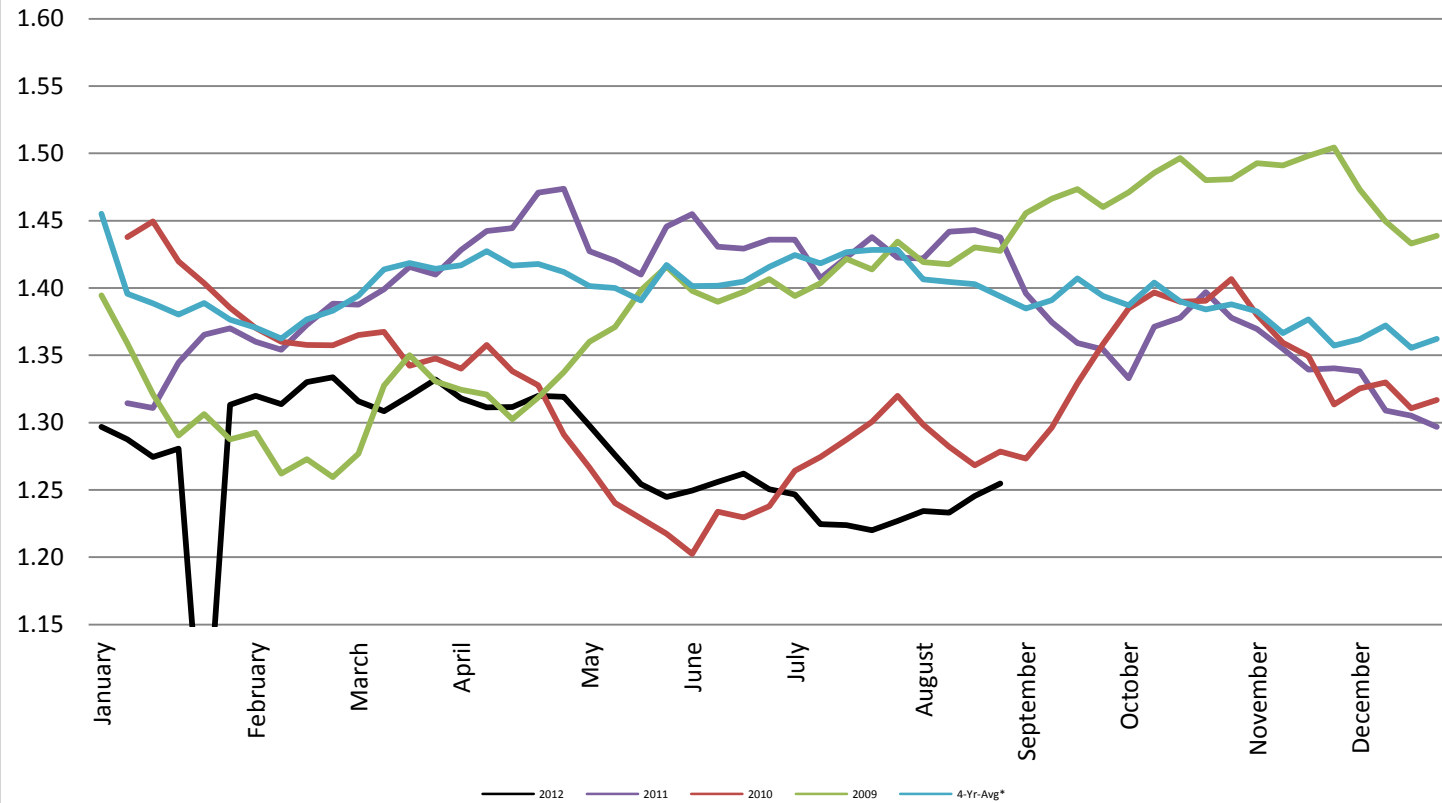
Sugar #16 - New York Board of Trade (ICE)



Foreign Exchange Rate - Euro, EMU Members

Foreign Exchange Rate - Euro, EMU Members

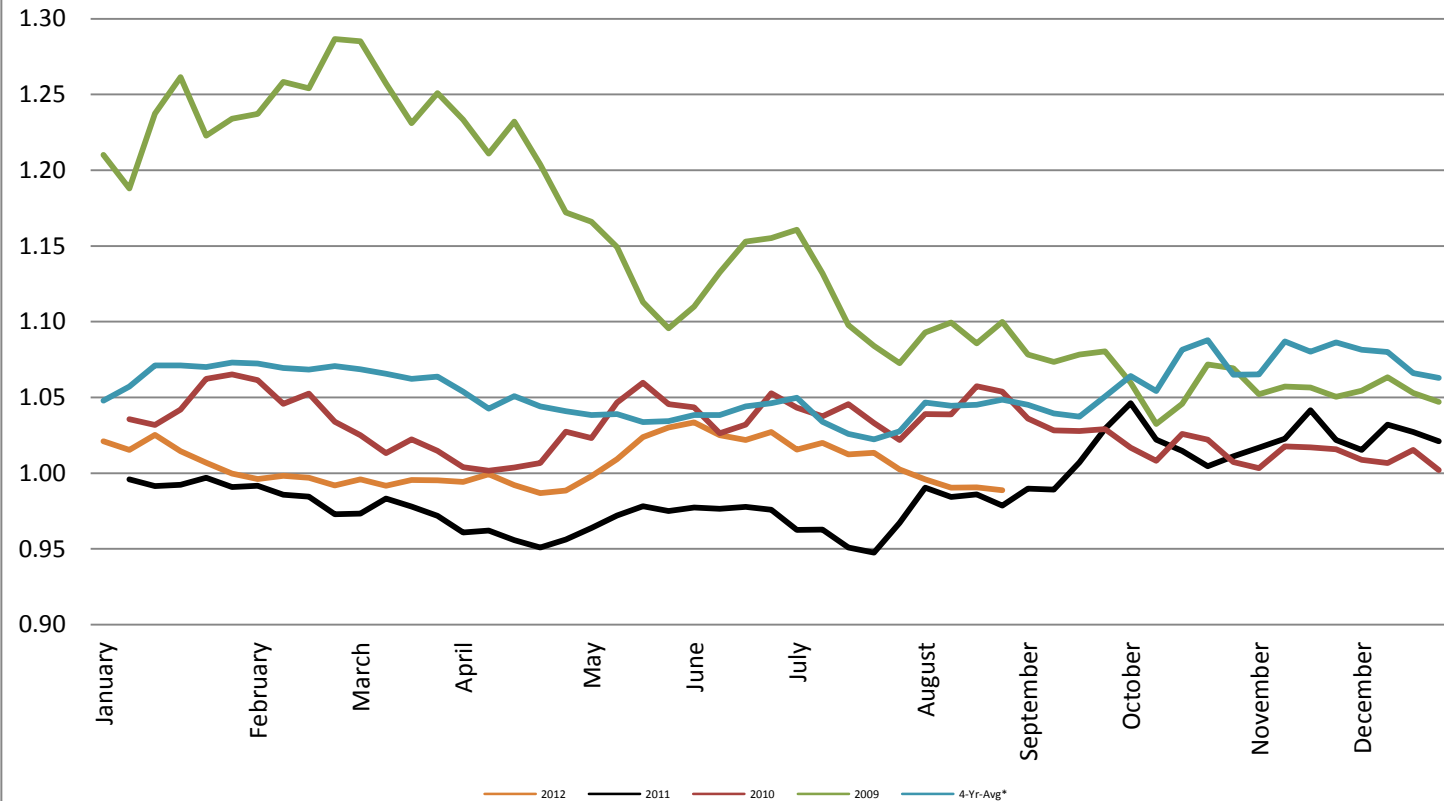
Federal Reserve Bank of New York



Foreign Exchange Rate - Canadian Dollar

Foreign Exchange Rate - Canadian Dollar

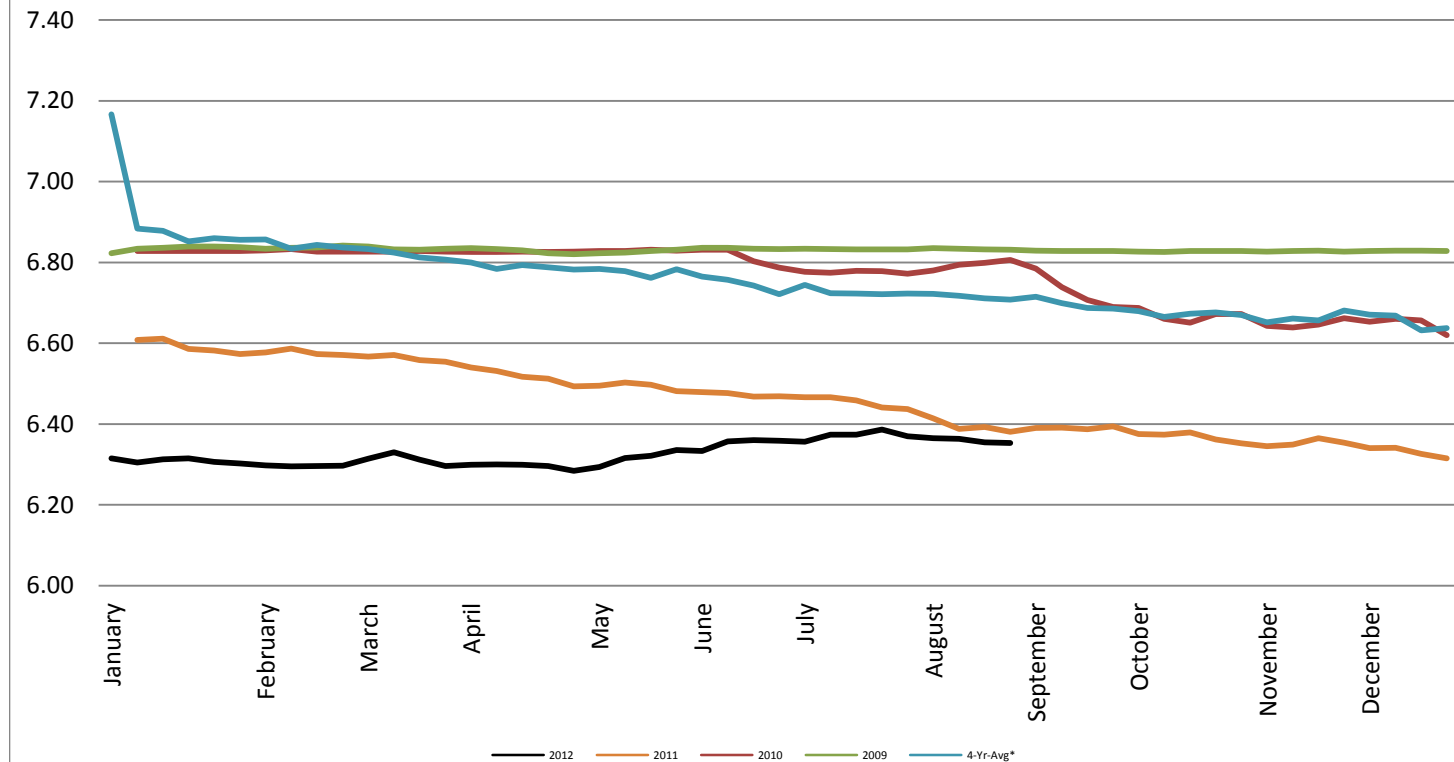
Federal Reserve Bank of New York



Foreign Exchange Rate - Chinese Yuan

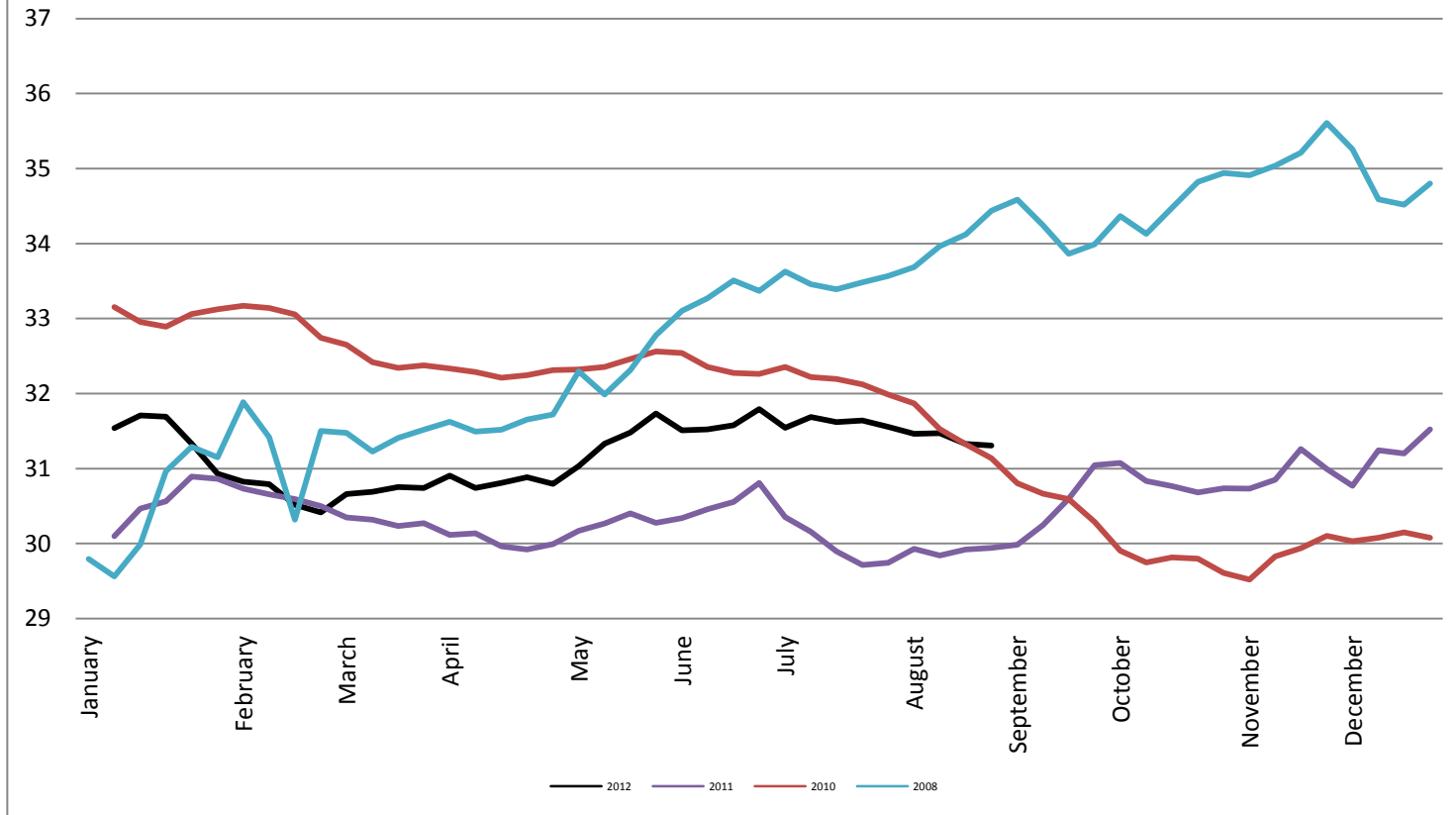
Foreign Exchange Rate - Chinese Yuan

Federal Reserve Bank of New York



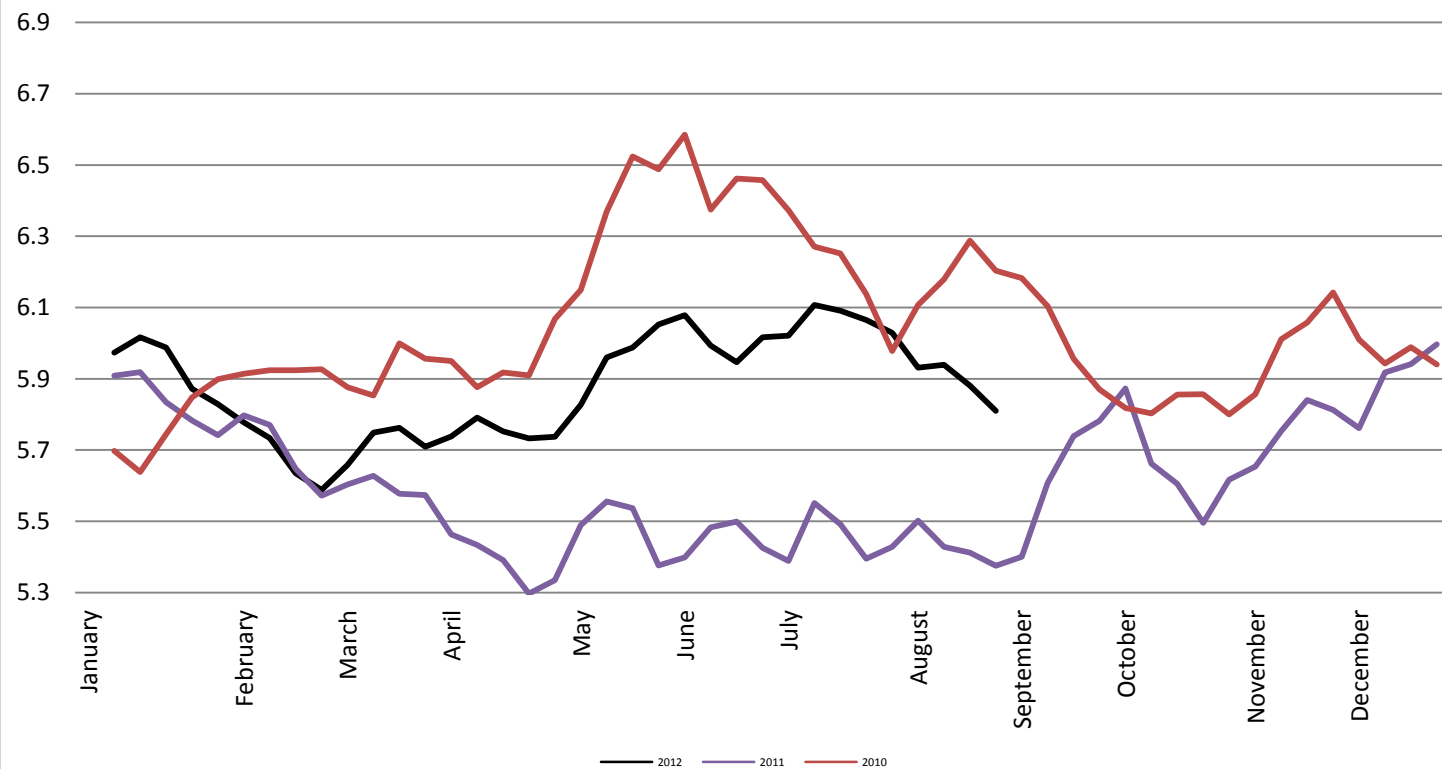
Foreign Exchange Rate

Thailand - Baht *Federal Reserve Bank of New York*



Foreign Exchange Rate

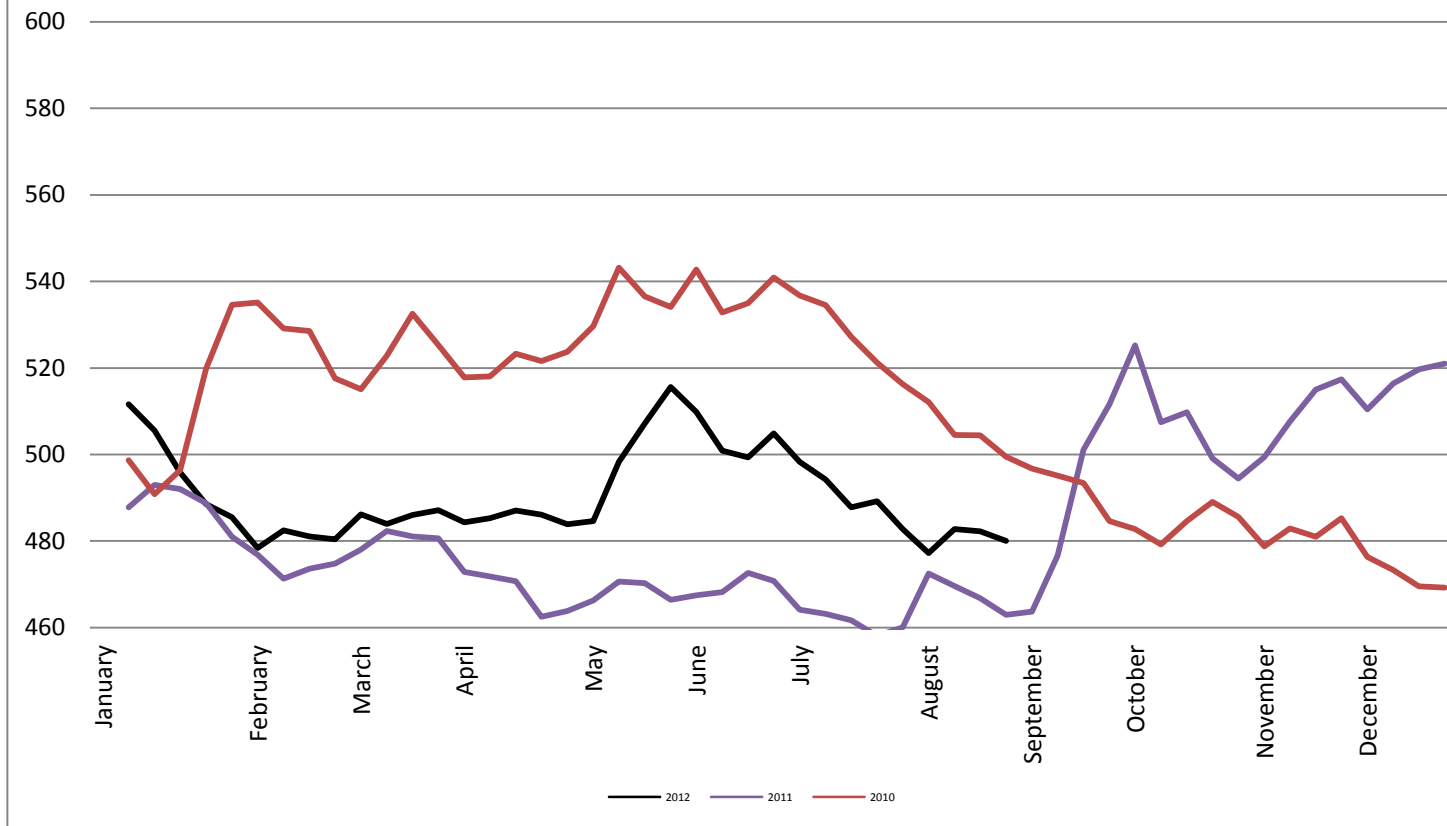
Nowegian Krone *Federal Reserve Bank of New York*



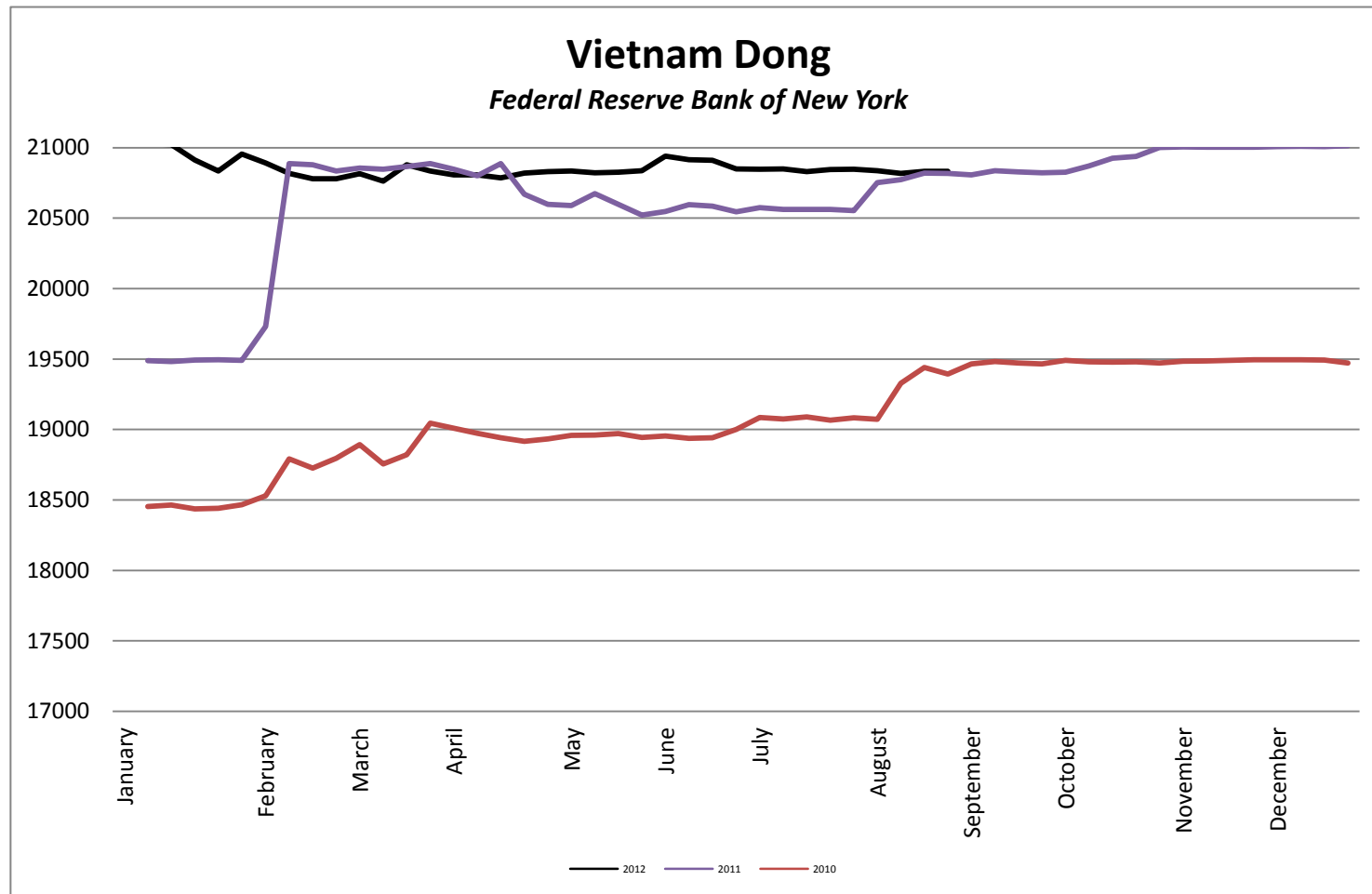
Foreign Exchange Rate

Chile Peso

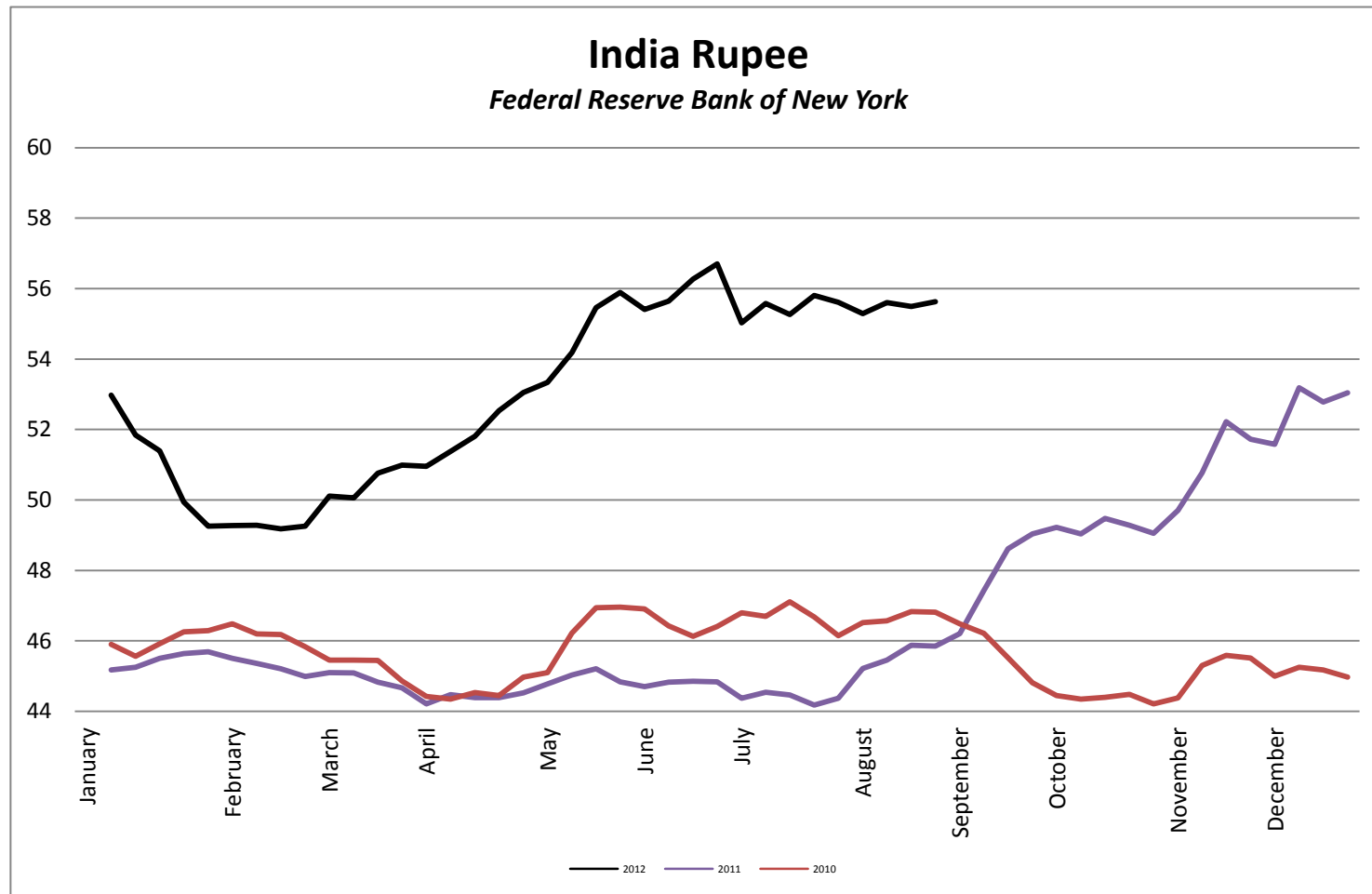
Federal Reserve Bank of New York



Foreign Exchange Rate



Foreign Exchange Rate



Foreign Exchange Rate

Peruvian New Sol

Federal Reserve Bank of New York

