

Key Commodity Report Weekly

August 27, 2012

Commodity Activity - Weekly Average

8/20/2012		This Week	Last Week	YTD Avg	Last Year	vs. Last Week	vs. Last Year
CME Group							
Corn	↑	817.55	790.55	666.15	733.45	3.42%	11.47%
Soybean	↑	1734.0	1653.4	1422.0	1390.7	4.88%	24.69%
Soy Meal	↑	534.62	518.42	407.22	368.40	3.12%	45.12%
Soybean Oil	↑	0.5560	0.5299	0.5278	0.5584	4.93%	-0.43%
Rough Rice	↓	15.41	15.42	15.11	16.99	-0.06%	-9.30%
Wheat	↑	883.70	855.90	692.26	752.30	3.25%	17.47%
Cheddar Barrel	↓	1.805	1.827	1.555	1.751	-1.23%	3.06%
Cheddar Block	↓	1.844	1.866	1.585	1.790	-1.15%	3.02%
Milk Class III	↑	17.95	17.63	16.21	21.53	1.83%	-16.61%
Butter AA	↑	1.800	1.778	1.505	2.092	1.27%	-13.94%

Source: CME Group

USDA Weekly Prices

Live Cattle	↑	1.206	1.195	1.217	1.140	0.90%	5.75%
Course Ground Beef	↑	2.305	2.260	2.118	1.910	2.00%	20.68%
Live Hog	↓	0.5400	0.5720	0.5768	0.6460	-5.59%	-16.41%
Pork Bellies	↓	1.42	1.55	1.18	1.32	-8.60%	7.59%
Chicken Whole (GA Dock)	↑	0.9525	0.9500	0.9312	0.8850	0.26%	7.63%
Crude Corn Oil	↑	58.00	57.95	57.08	60.00	0.09%	-3.33%
Crude Peanut Oil	↑	126.00	126.00	118.00	107.00	0.00%	17.76%

Source: USDA

NYMEX Futures & Retail

Crude Oil	↑	96.47	94.42	96.48	85.08	2.17%	13.39%
Heating Oil No.2 Spot	↓	0.00	309.20	307.00	295.14	-100.00%	#####
On Highway Diesel	↑	402.60	396.50	392.11	381.00	1.54%	5.67%
On Highway Gasoline	↑	374.40	372.10	362.18	358.10	0.62%	4.55%
Natural Gas	↑	2.776	2.751	2.540	3.933	0.91%	-29.42%

Source: New York Mercantile Exchange

Federal Reserve

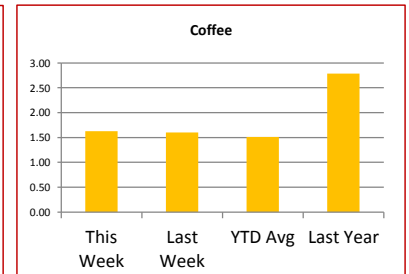
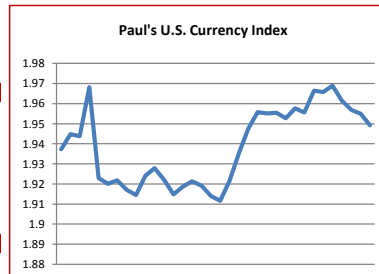
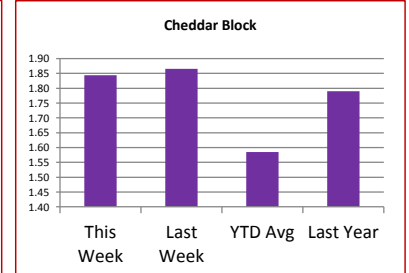
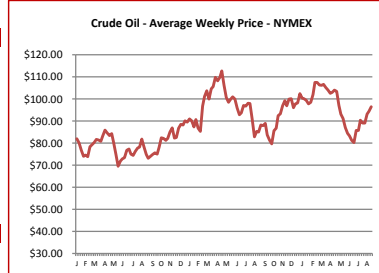
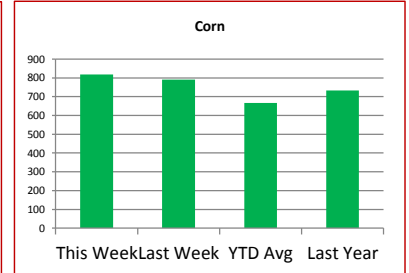
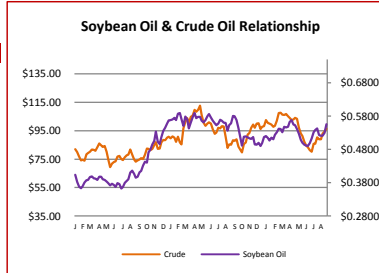
*Euro	↑	1.2455	1.2332	1.2732	1.4431	1.00%	-13.69%
*British Pound	↑	1.5788	1.5704	1.5520	1.6412	0.53%	-3.80%
Canadian Dollar	↑	0.9906	0.9905	1.0061	0.9859	0.01%	0.48%
Chinese Yuan	↓	6.355	6.363	6.325	6.393	-0.13%	-0.59%
Swiss Frank	↓	0.964	0.974	0.940	0.791	-1.00%	21.85%

Source: Federal Reserve Bank of New York

NYBOT Futures

Sugar 16	↓	29.05	29.26	36.41	41.25	-0.72%	-29.58%
Coffee	↑	1.6260	1.6030	1.5125	2.7890	1.43%	-41.70%

Source: Intercontinental Exchange



Market Commentary

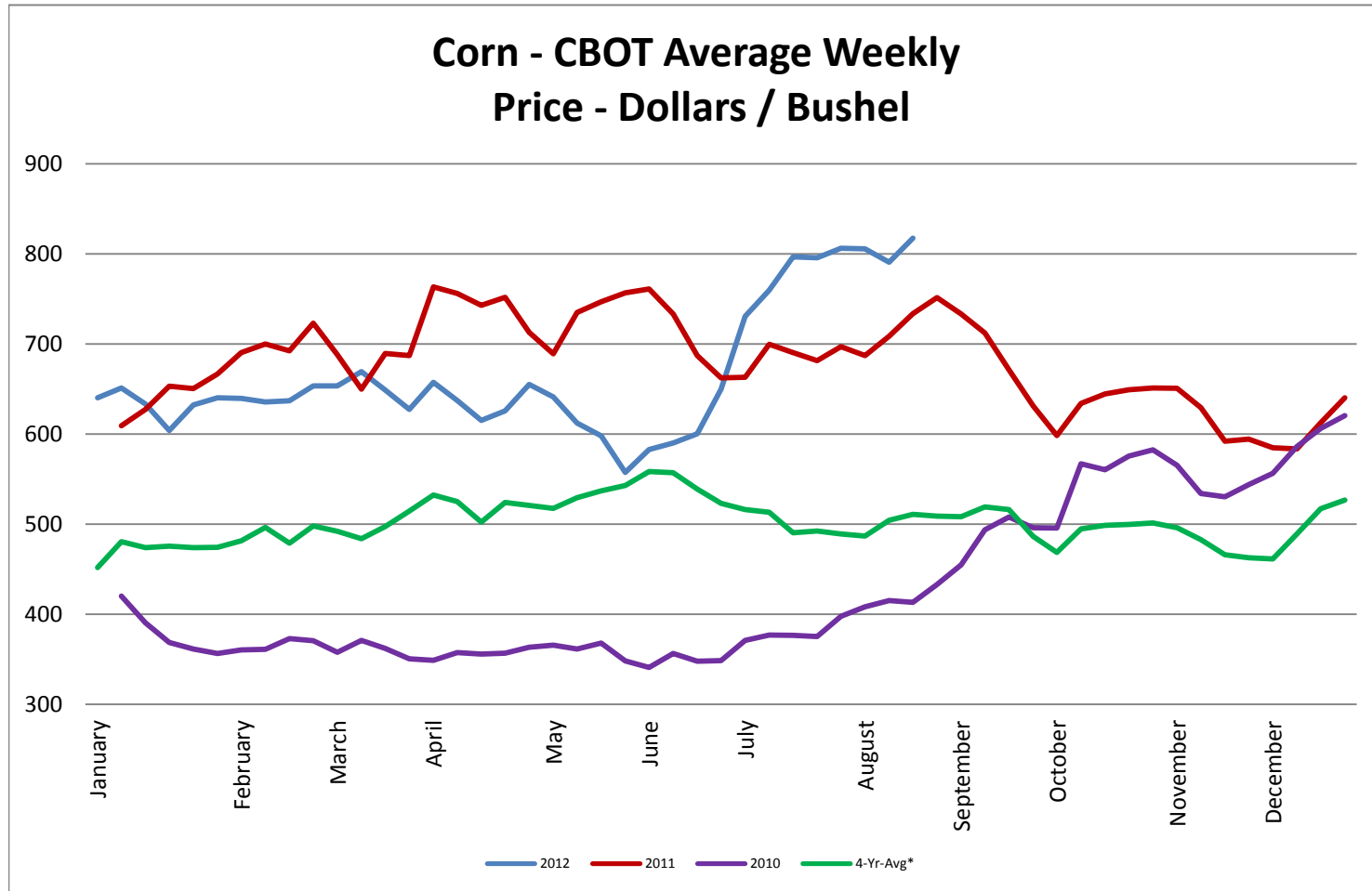
Commentary: Well, it looks like soybean oil decided to play catch-up with the other agricultural commodities. Frankly it was about time. Bean oil traded up all week. Frankly it is oversold at this point and should see some retracement early next week, but it is not likely to make any massive backward moves. We are now at a point with beans where demand needs to be rationed. This means that we will have to slow exports. Foreign countries realize this, and since there are no other places to buy beans, they are quickly ramping up buying right now before they are shut off. Corn was up a bit last week as traders are looking at poor findings by ProFarmer. Their report was worse than expected. Many have greater faith in organizations like ProFarmer as opposed to the USDA as far as more accurate information. Hurricane Isaac is heading into the Gulf of Mexico toward New Orleans. This is not good news. While it most likely won't be anywhere near a Katrina in strength, it will have a psychological effect on people and a real effect on the production of petroleum. Yes, crude oil and gas are going higher, most likely as a result. This will impact futures for AG commodities too.

Corn futures closed between \$8.02-1/4 and \$8.31-1/4 per bushel, ending the week at \$8.02-1/4.
 Soybean futures closed between \$17.03-3/4 and \$17.53-1/2 per bushel, ending the week at \$17.37-1/2.
 Soybean meal futures closed between \$527.80 and \$543.60 per short ton, ending the week at \$533.40.
 Soybean oil futures closed between \$0.5389 and \$0.5624 per pound, ending the week at \$0.5624.
 Wheat futures closed between \$8.67-1/2 and \$9.00-1/2 per bushel, ending the week at \$8.67-1/2.

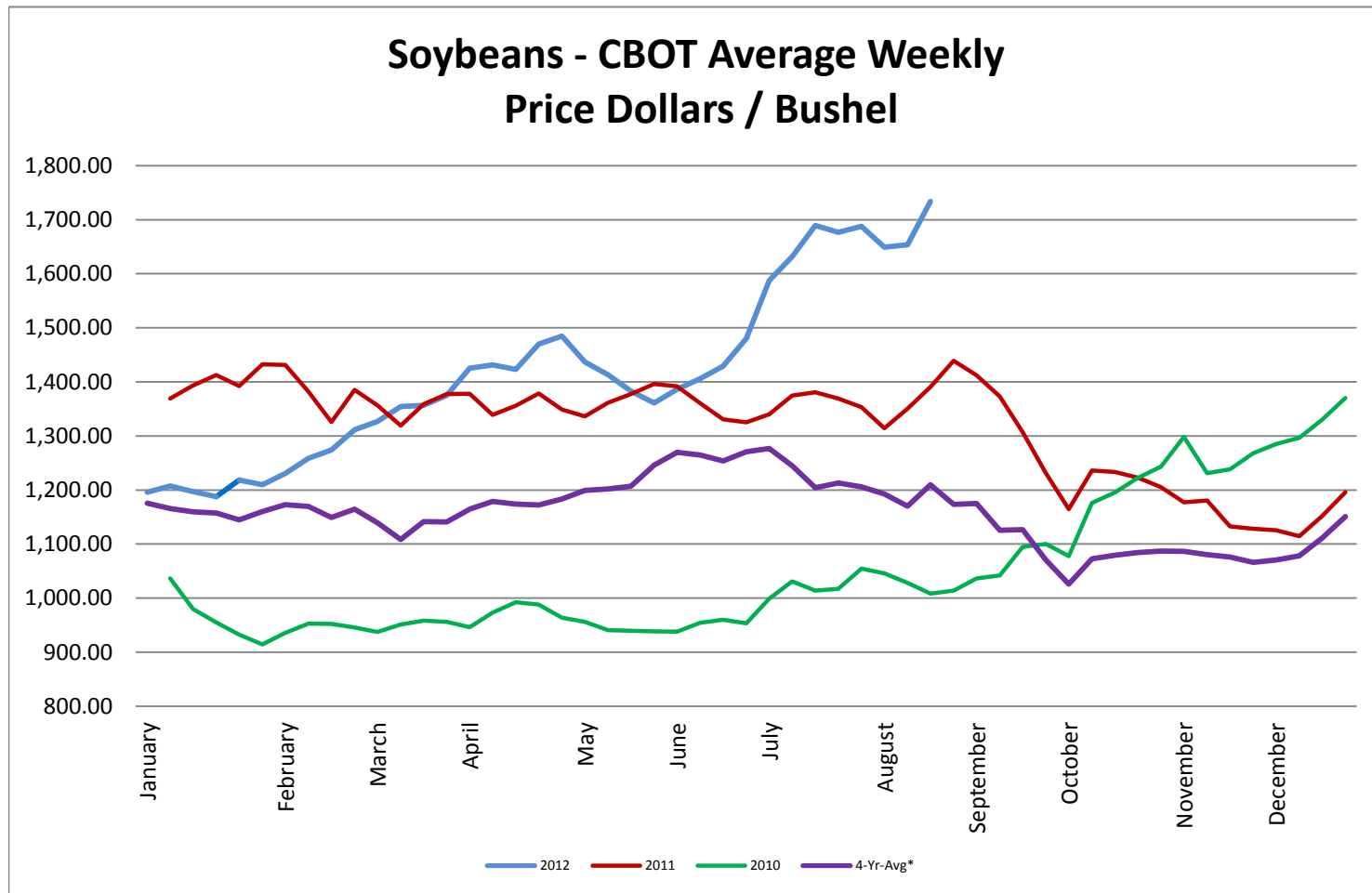
* Used as the indexing unit of measure for this exchange rate

Commodity Information: Commodity information found in this sheet is publically available. It can be found from numerous sources, all of which are noted. This report is for informational purposes only. Please do not make hedging or buying decisions based on this report. Please note that rounding can affect the percent of change values.

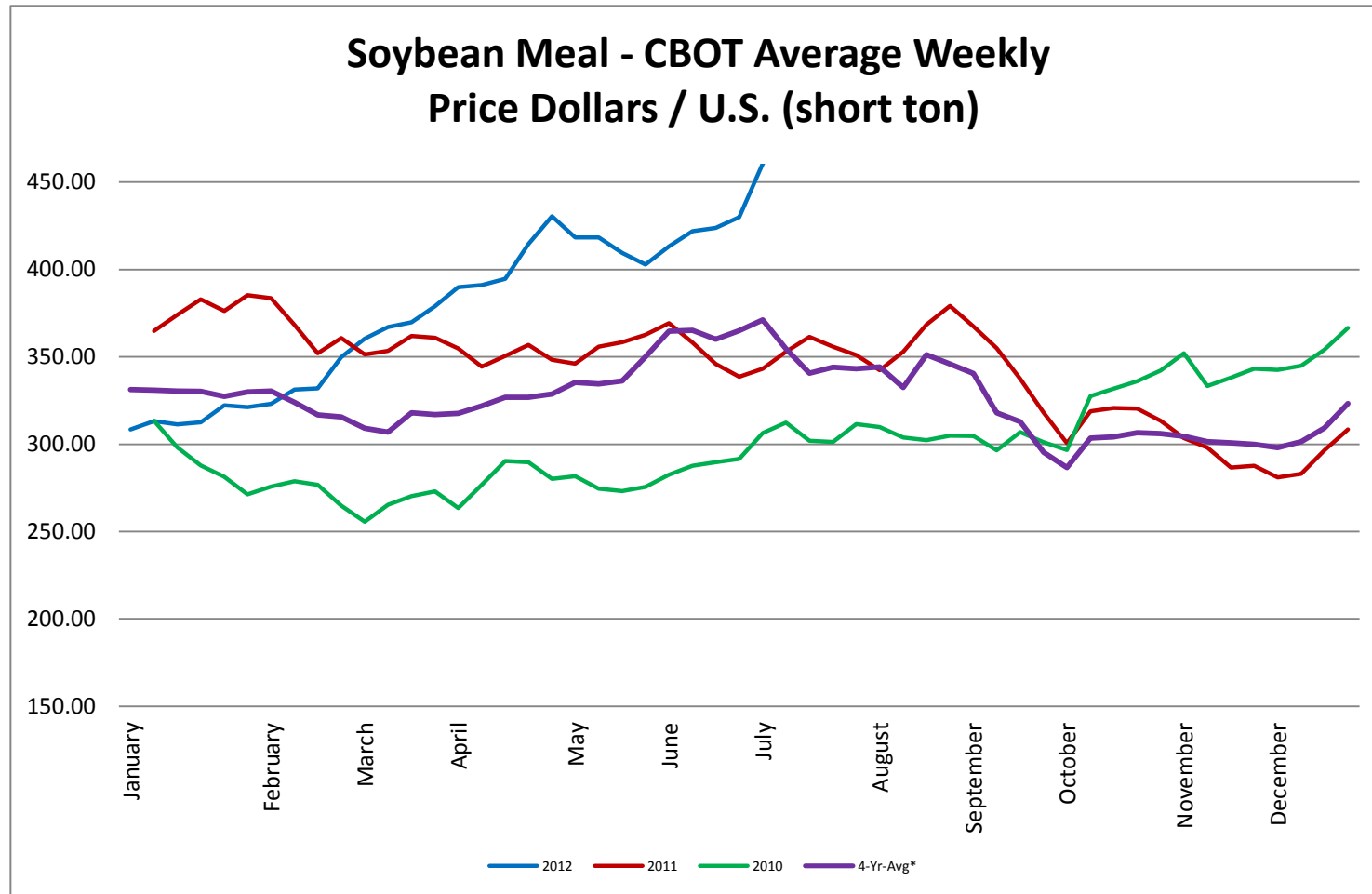
Corn - CBOT Weekly Futures Price



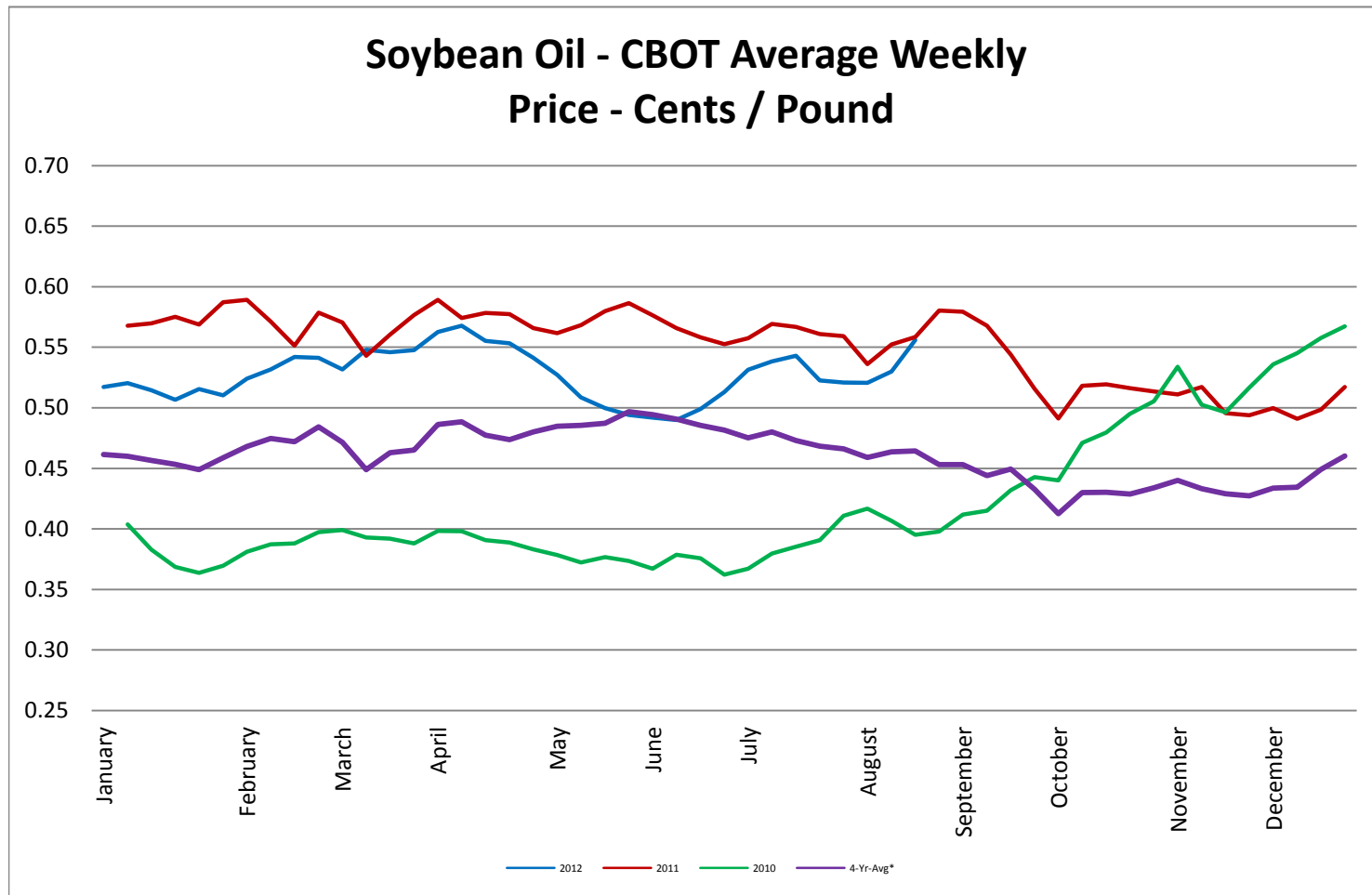
Soybeans - CBOT Weekly Average Price - Dollars / Bushel



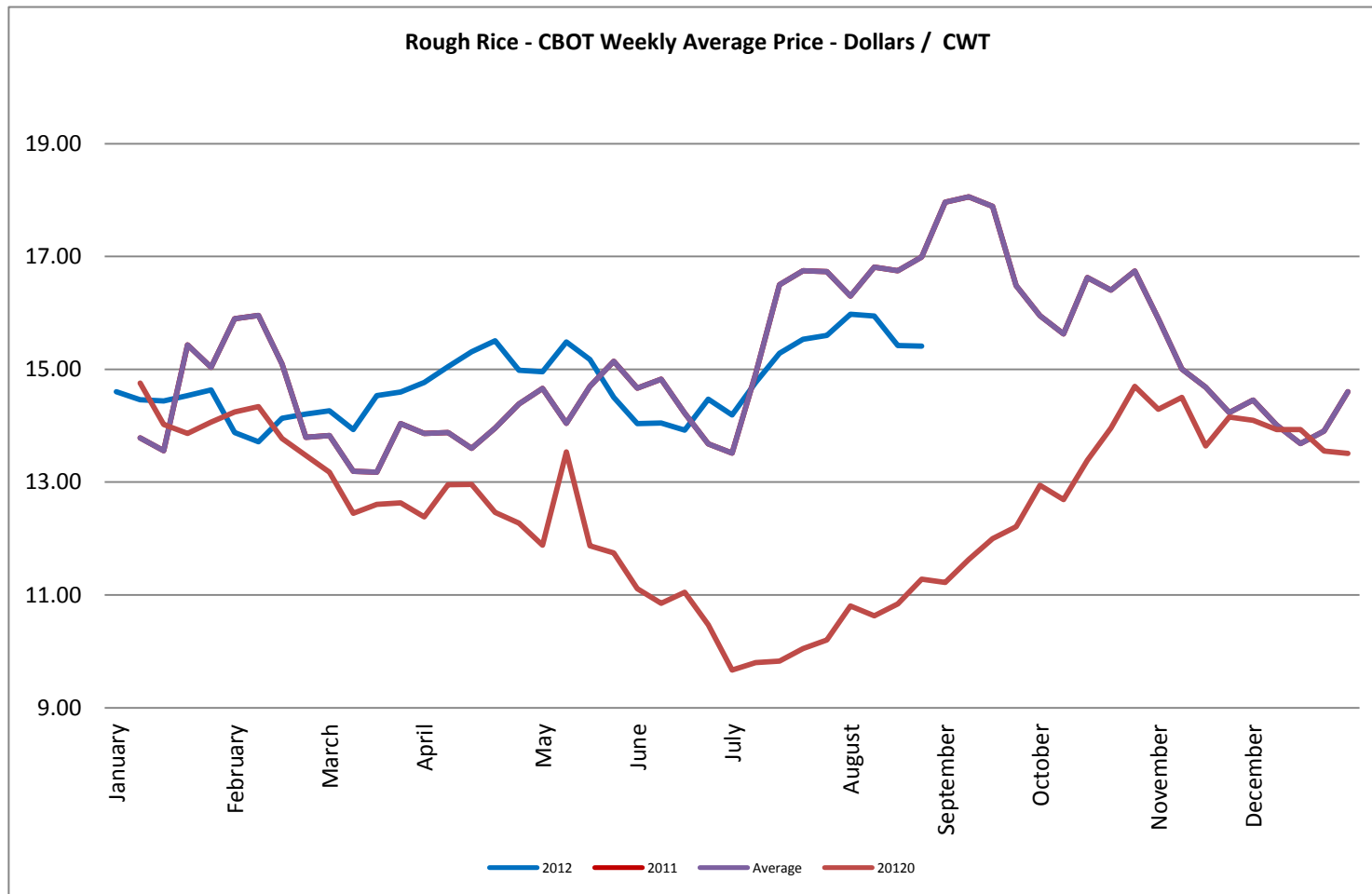
Soybean Meal - CBOT Weekly Average Price - Dollars / US Ton



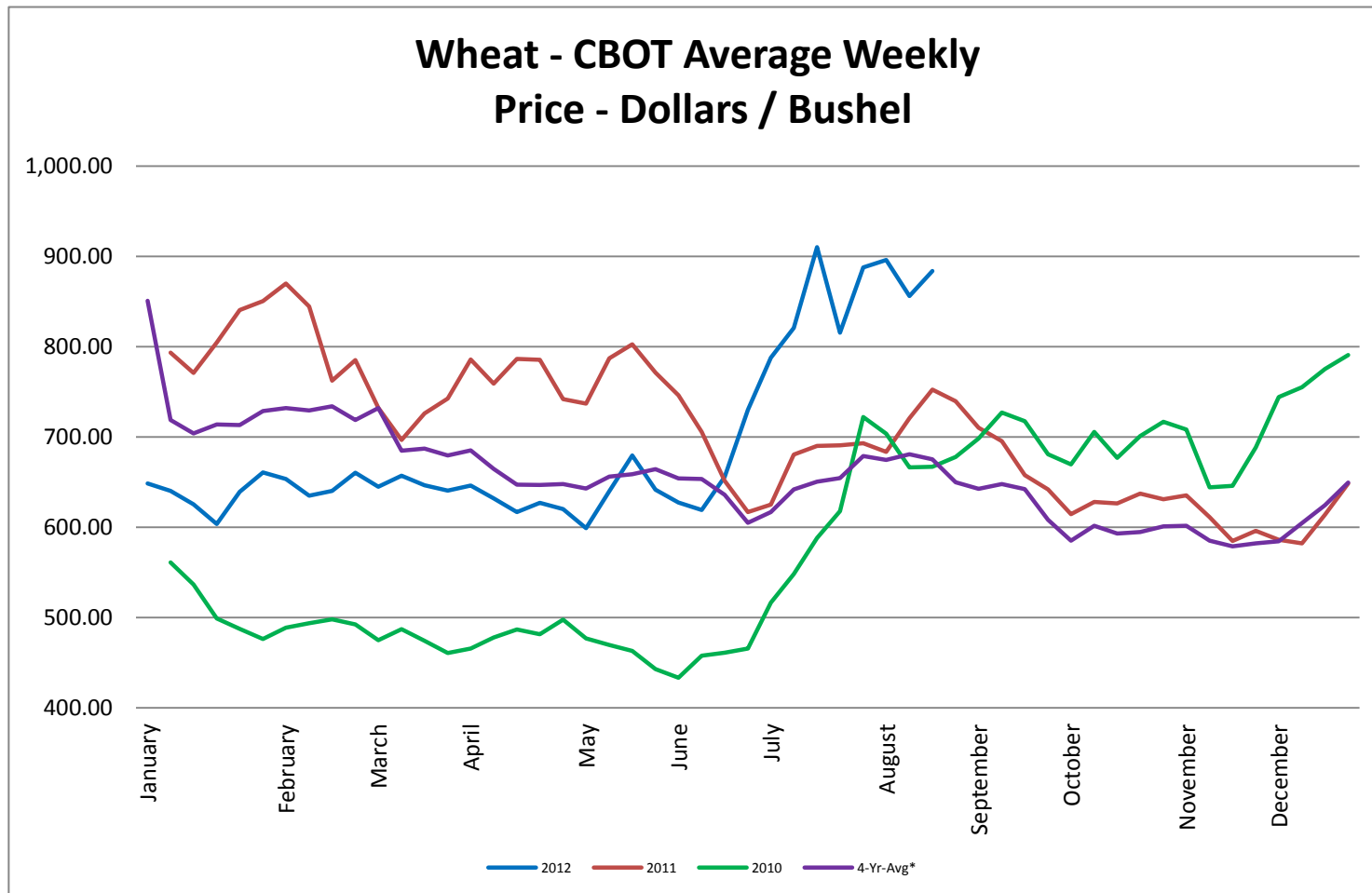
Soybean Oil - CBOT Weekly Average Price - Cents / Pound



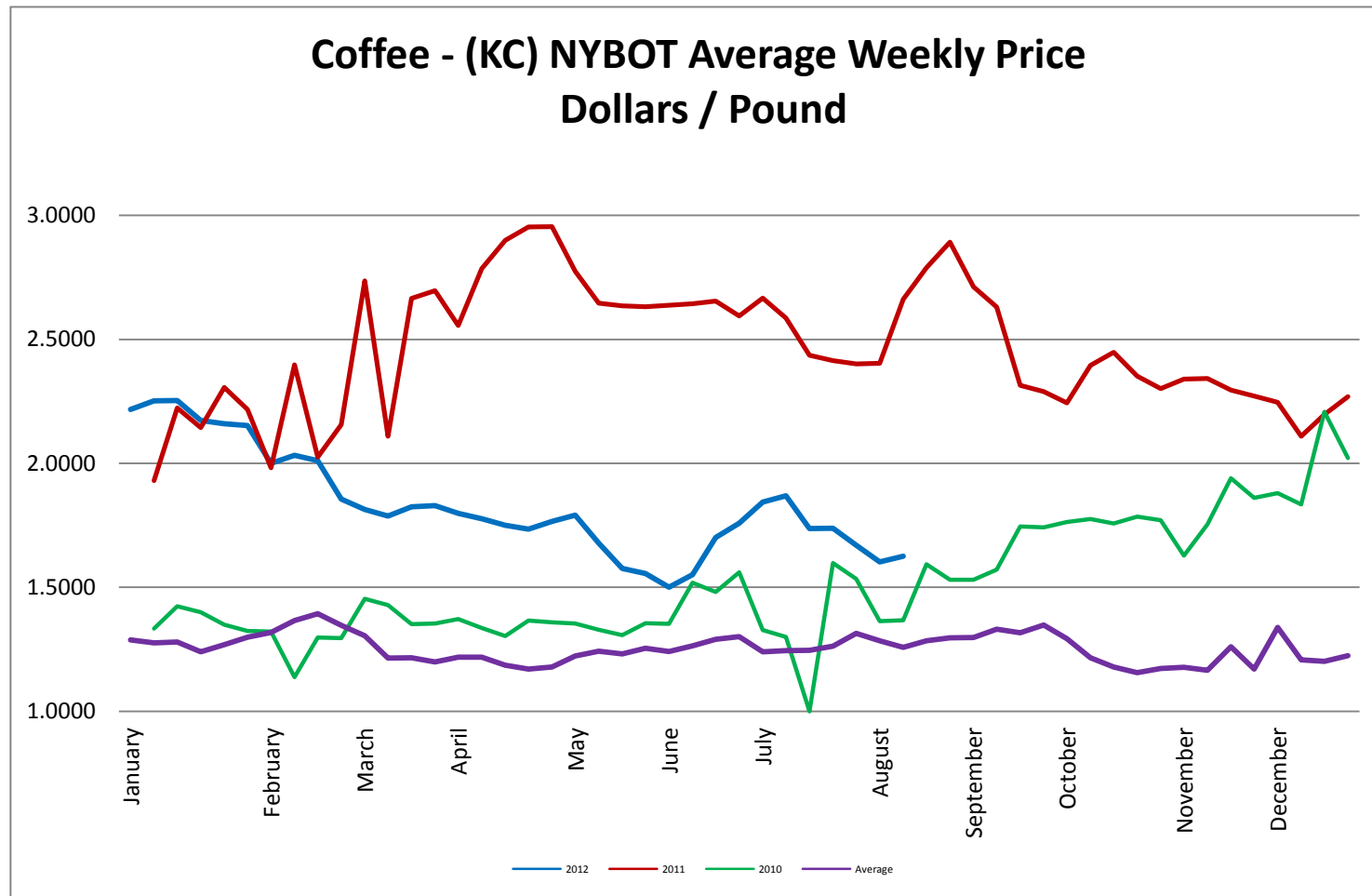
Rough Rice - CBOT Weekly Average Price - Dollars / CWT



Wheat - CBOT Weekly Average Price - Dollars / Bushel

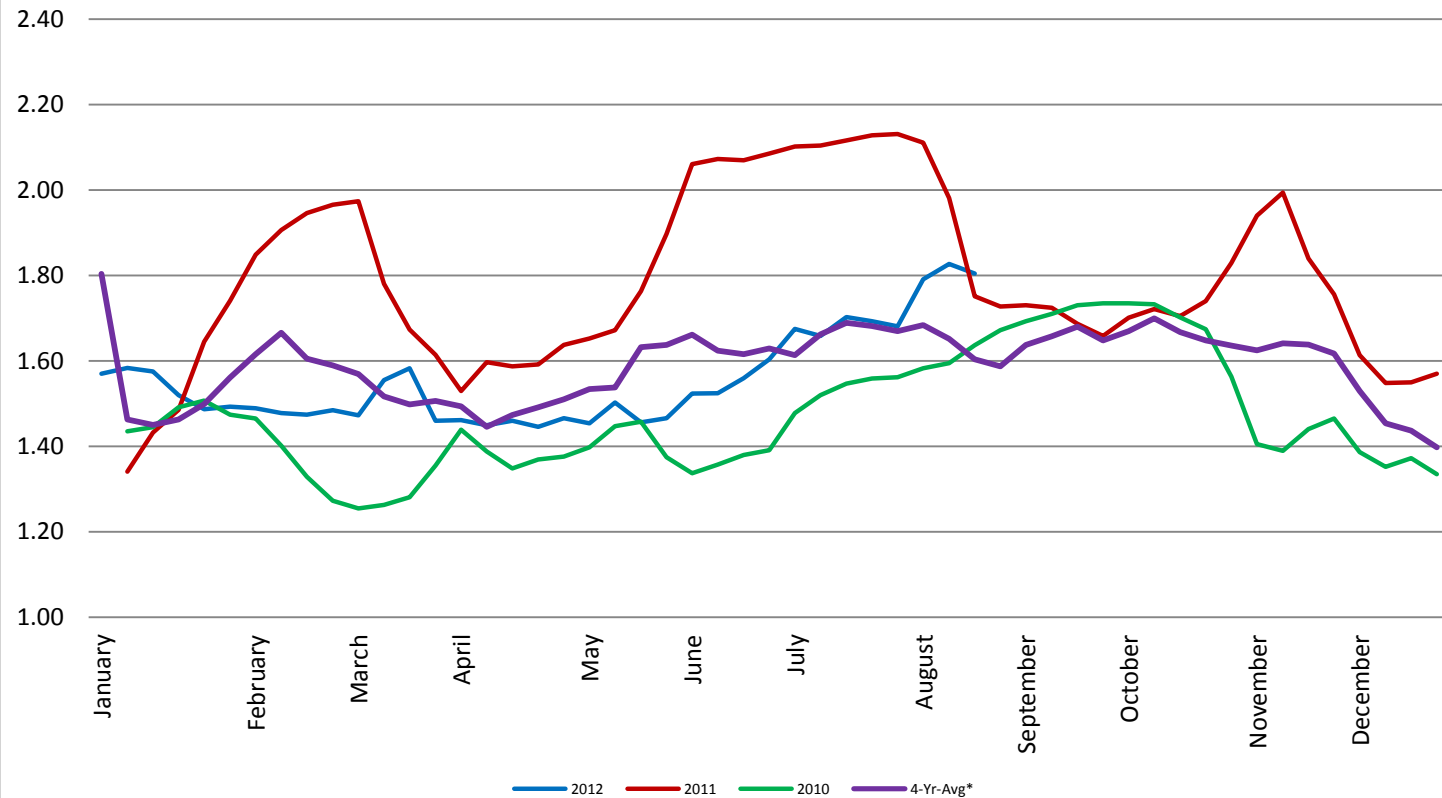


Coffee - (KC) NYBOT Average Weekly Price - Dollars per Pound



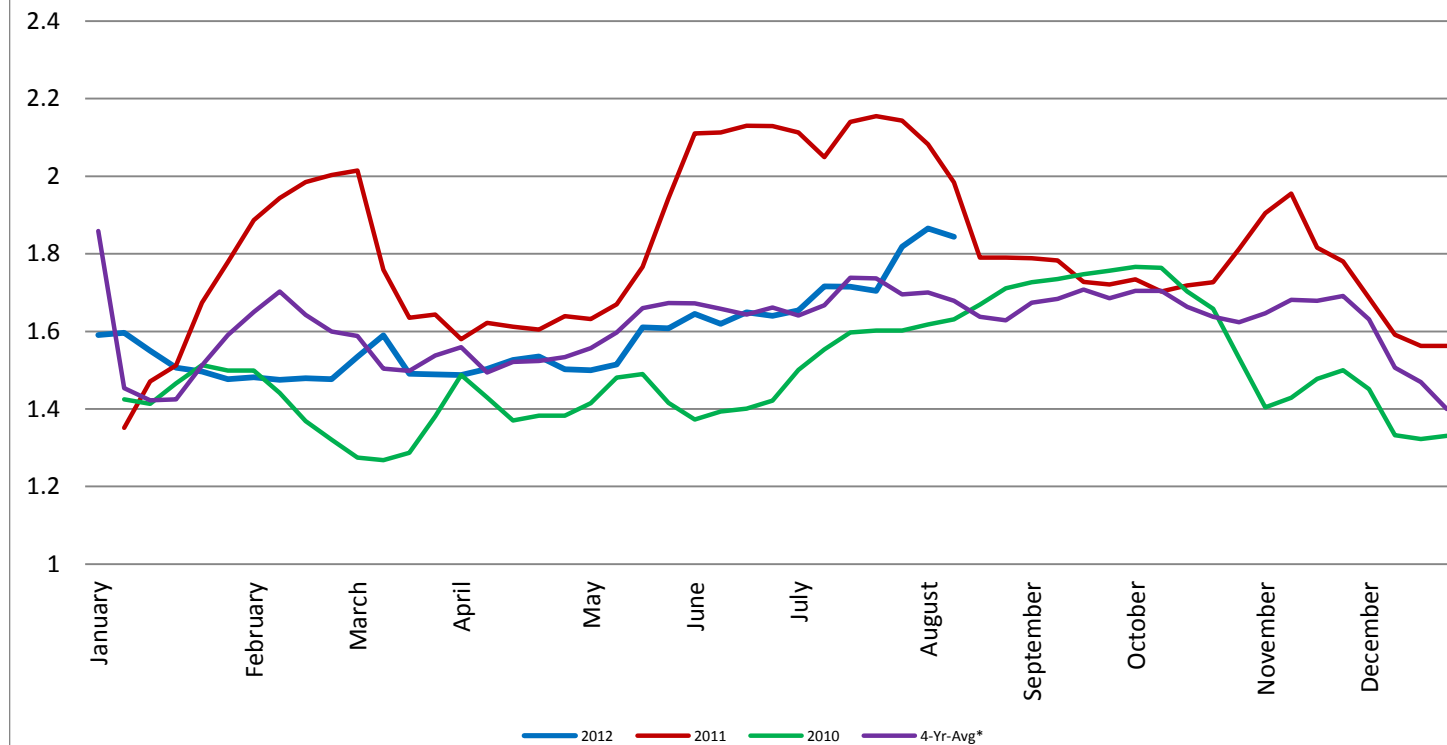
Barrel Cheddar - CME Average Weekly Price / Pound

Barrel Cheddar - CME Average Weekly Dollars per Pound

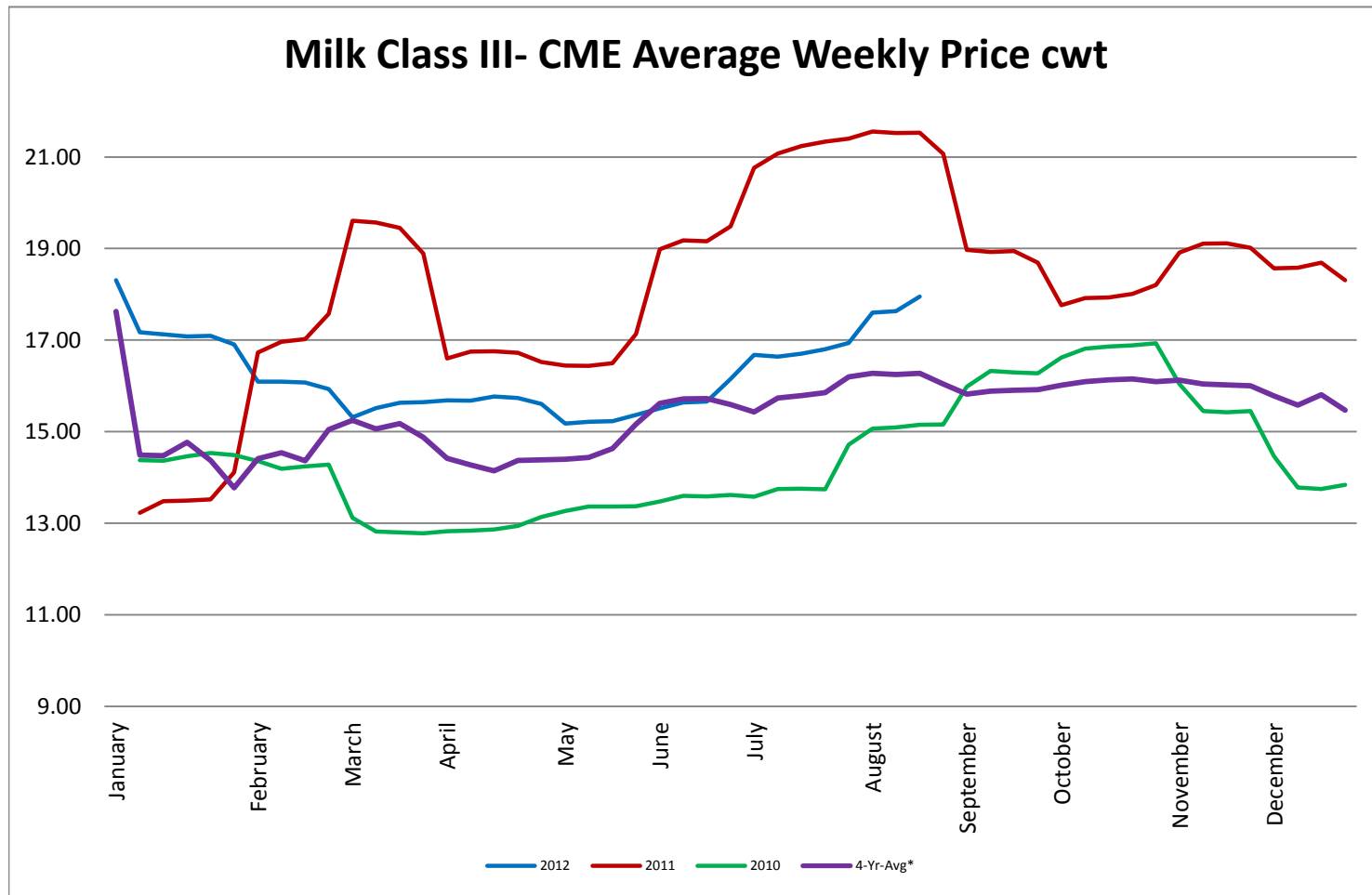


40 LB Block Cheddar - CME Average Weekly Price / Pound

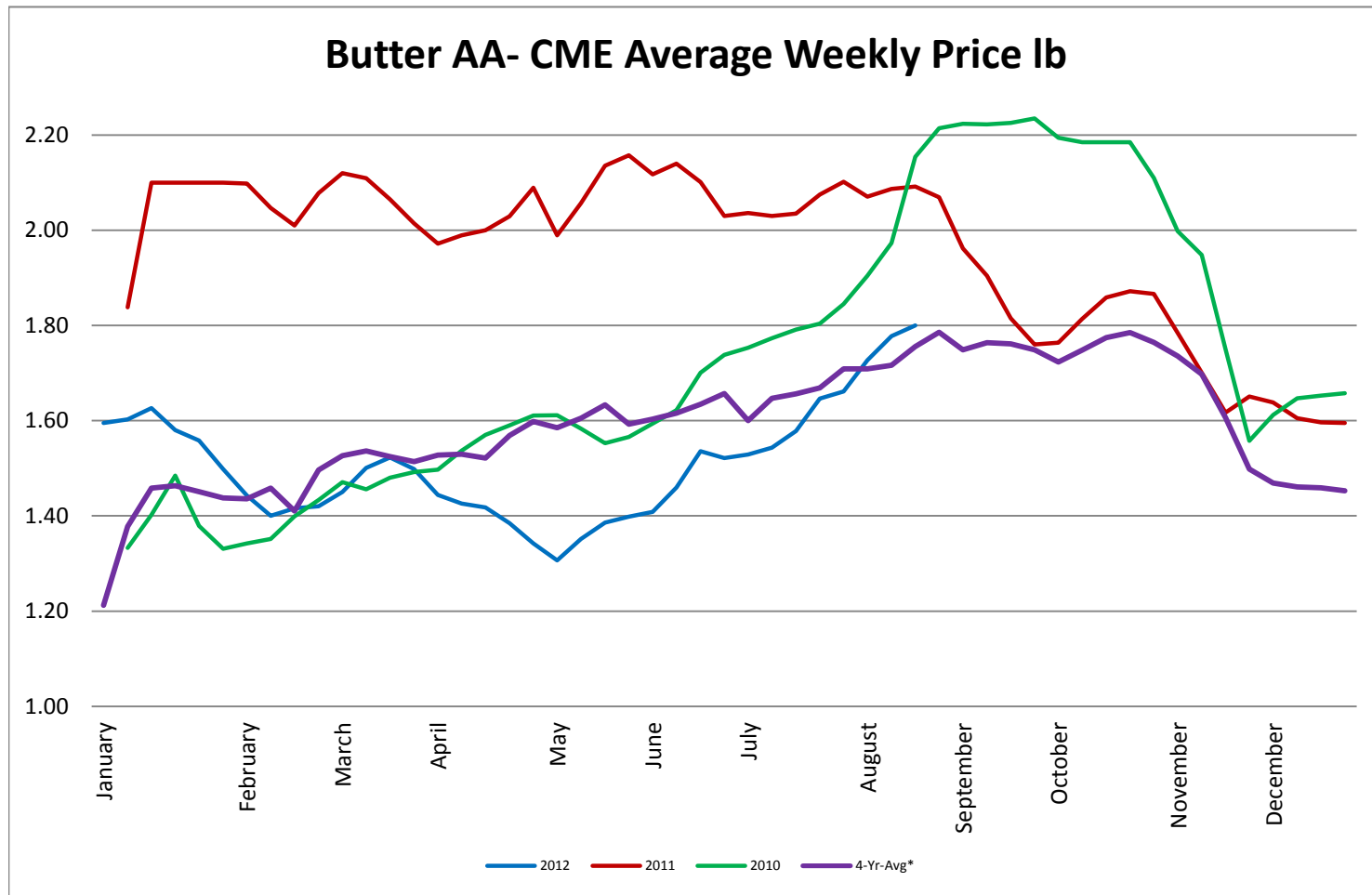
Block Cheddar 40 #- CME Average Weekly Dollars per Pound



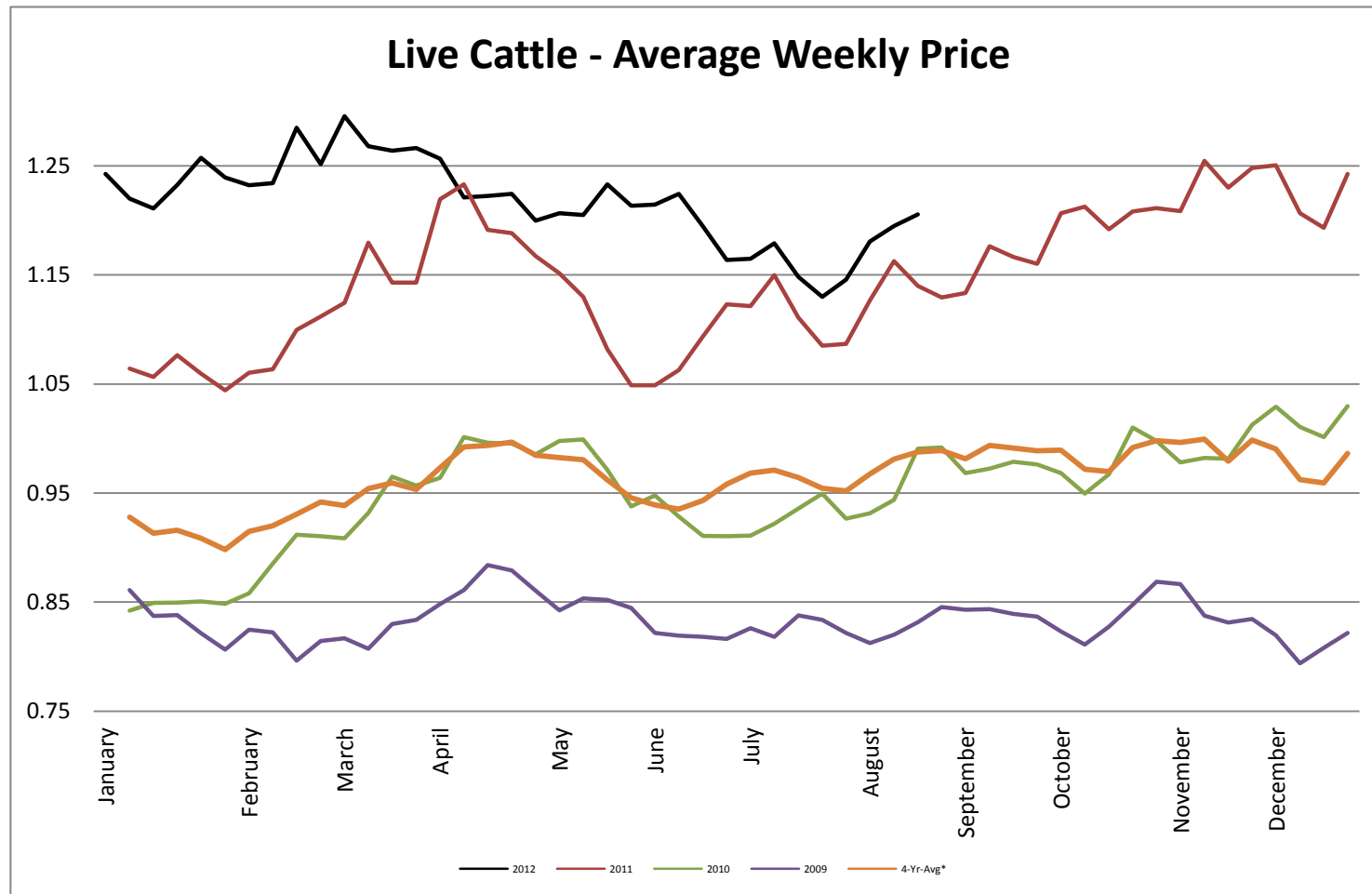
Milk Class III - CME Average Weekly Price CWT



Butter AA - CME Average Weekly Price lb

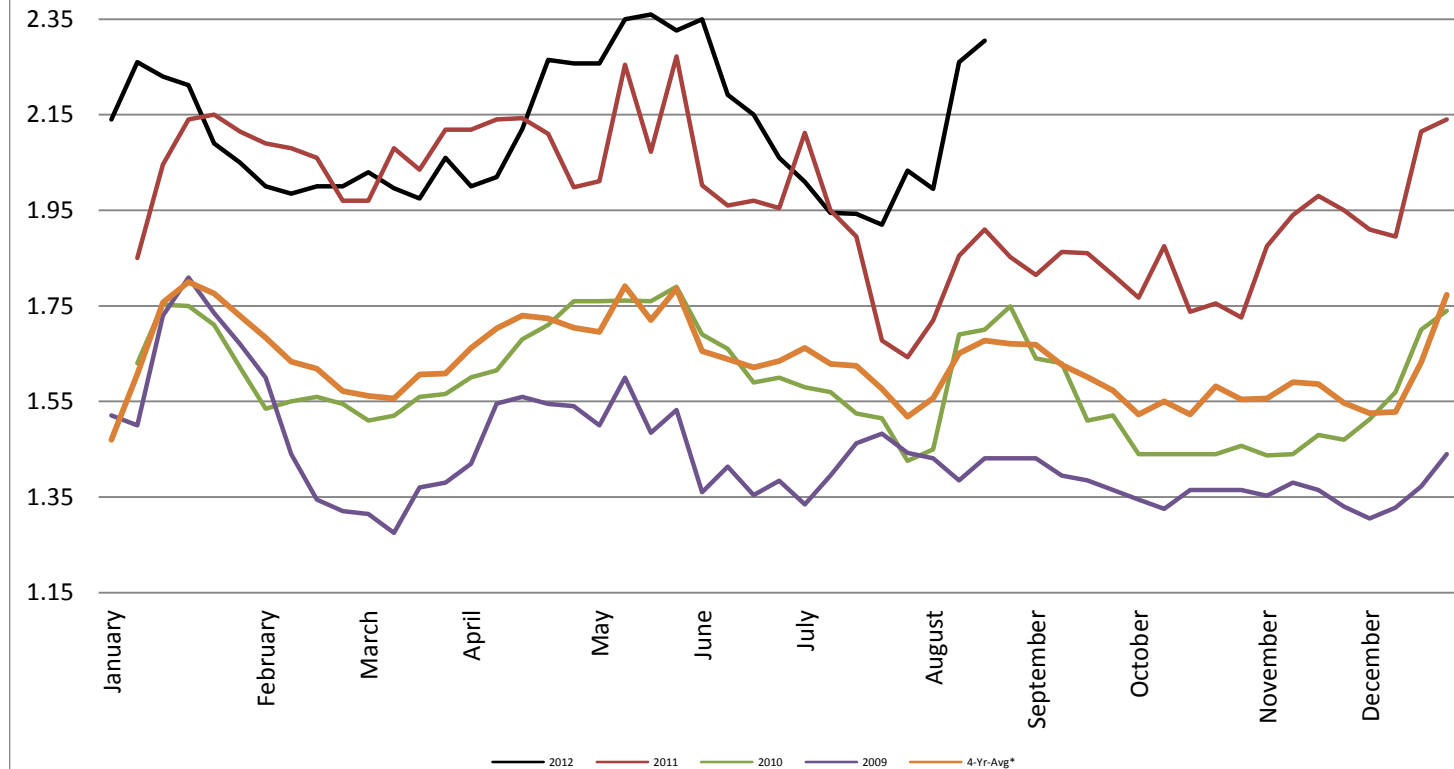


Live Cattle - Average Weekly Price USDA - 6 State Average

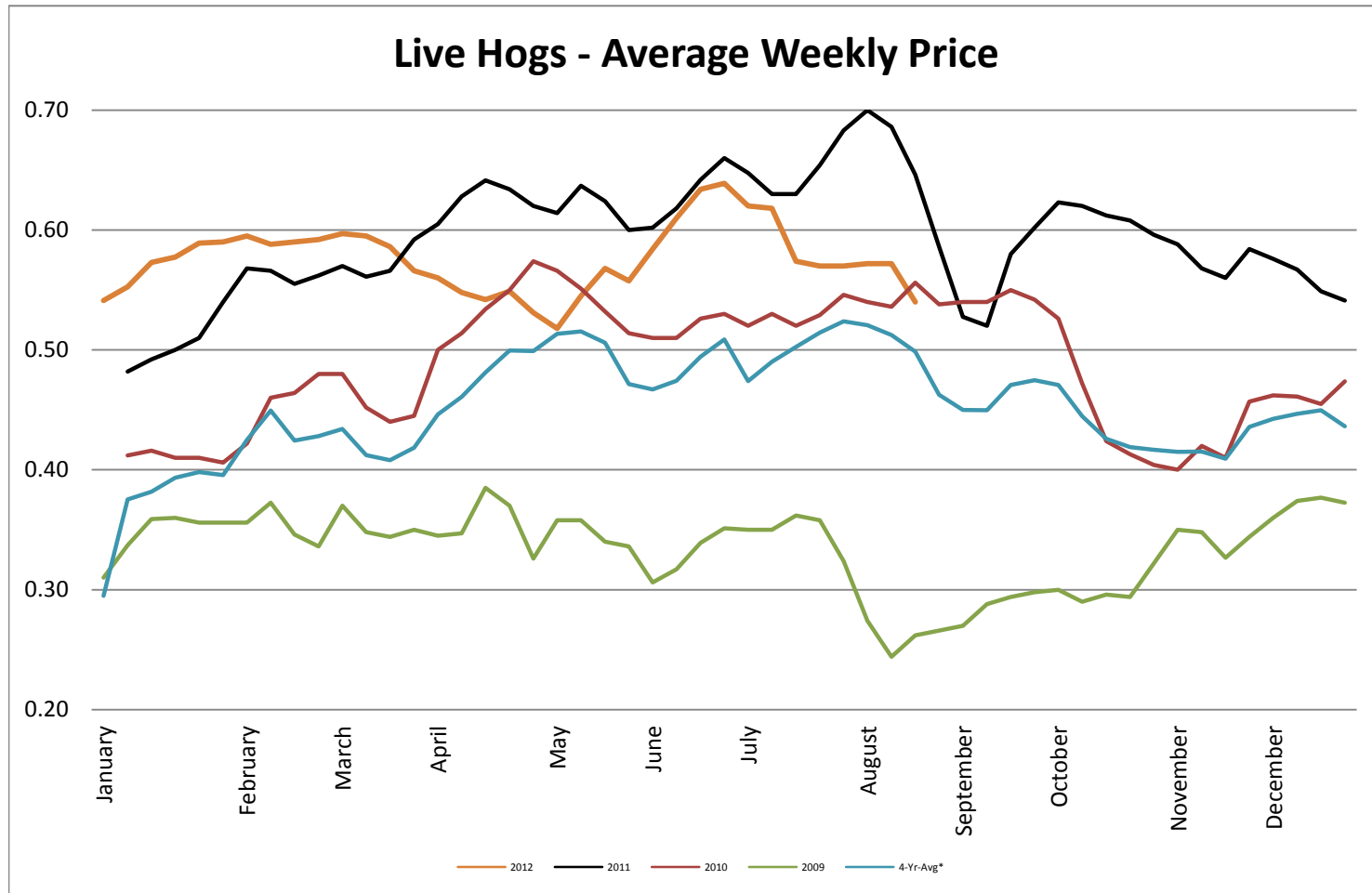


USDA Coarse ground 81% Steer & Heifer Source

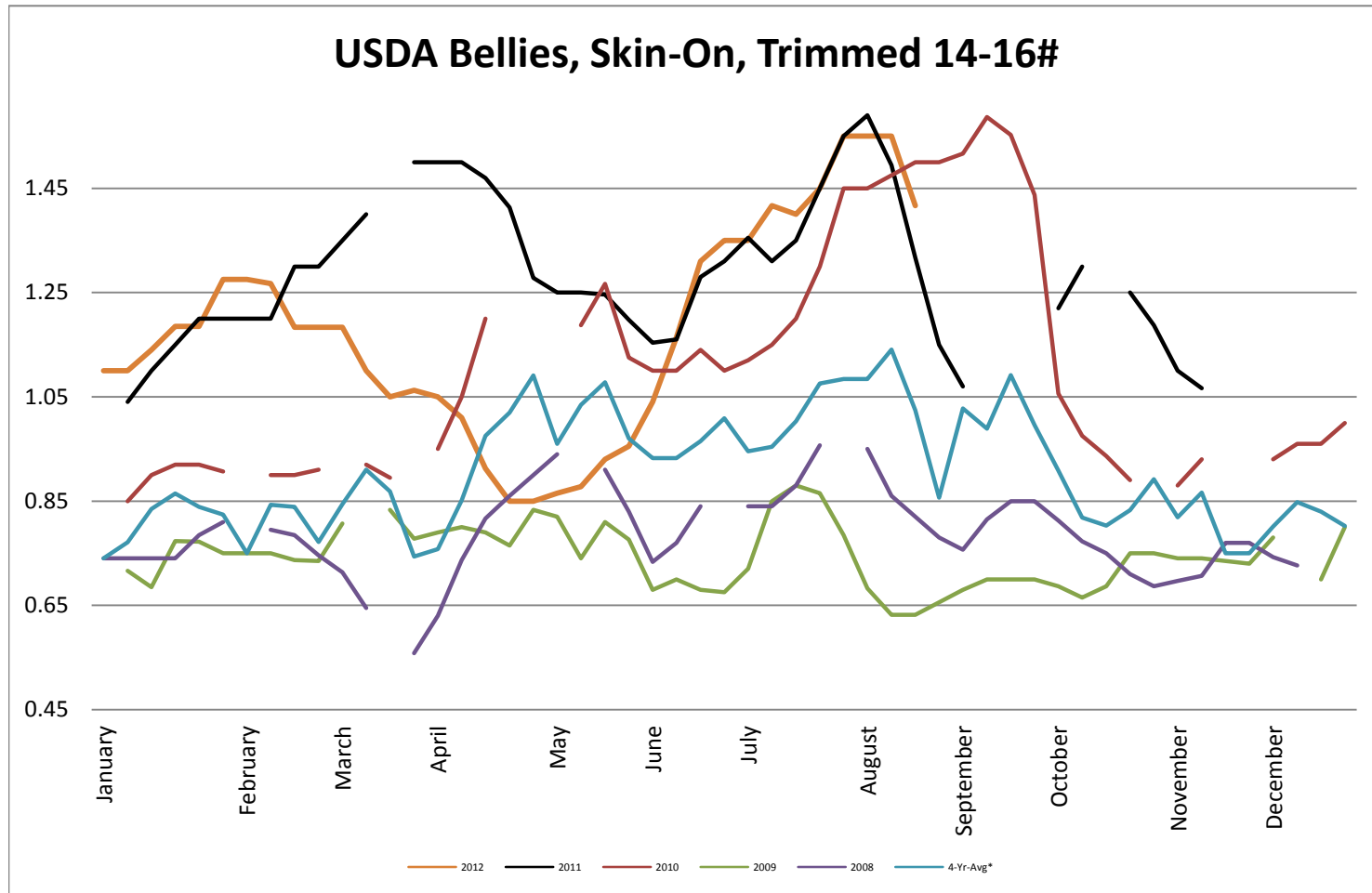
USDA Coarse ground 81% Steer & Heifer Source



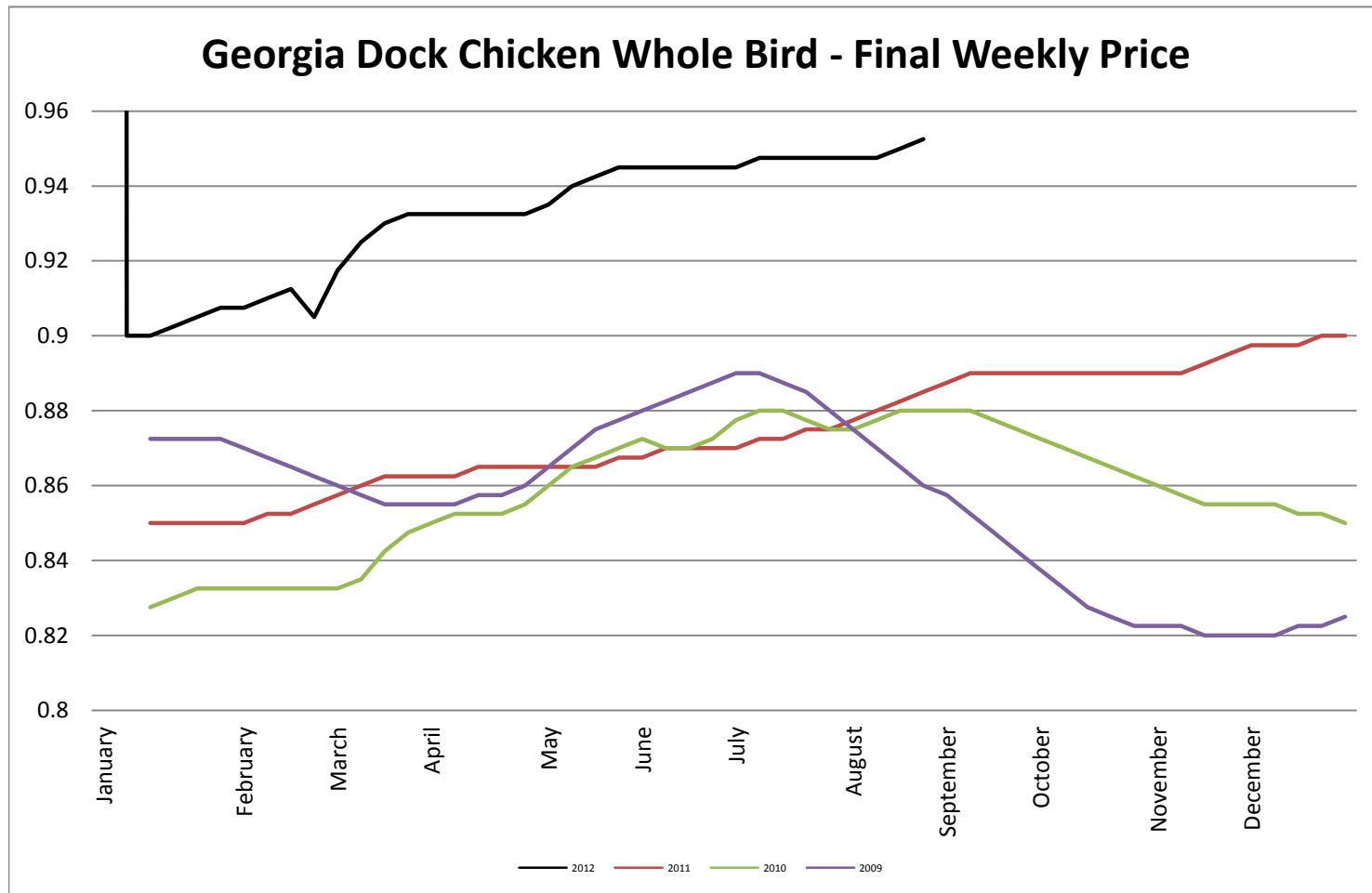
USDA Live Hogs - Average Weekly Price



USDA Bellies, Skin-On, Trimmed 14-16#

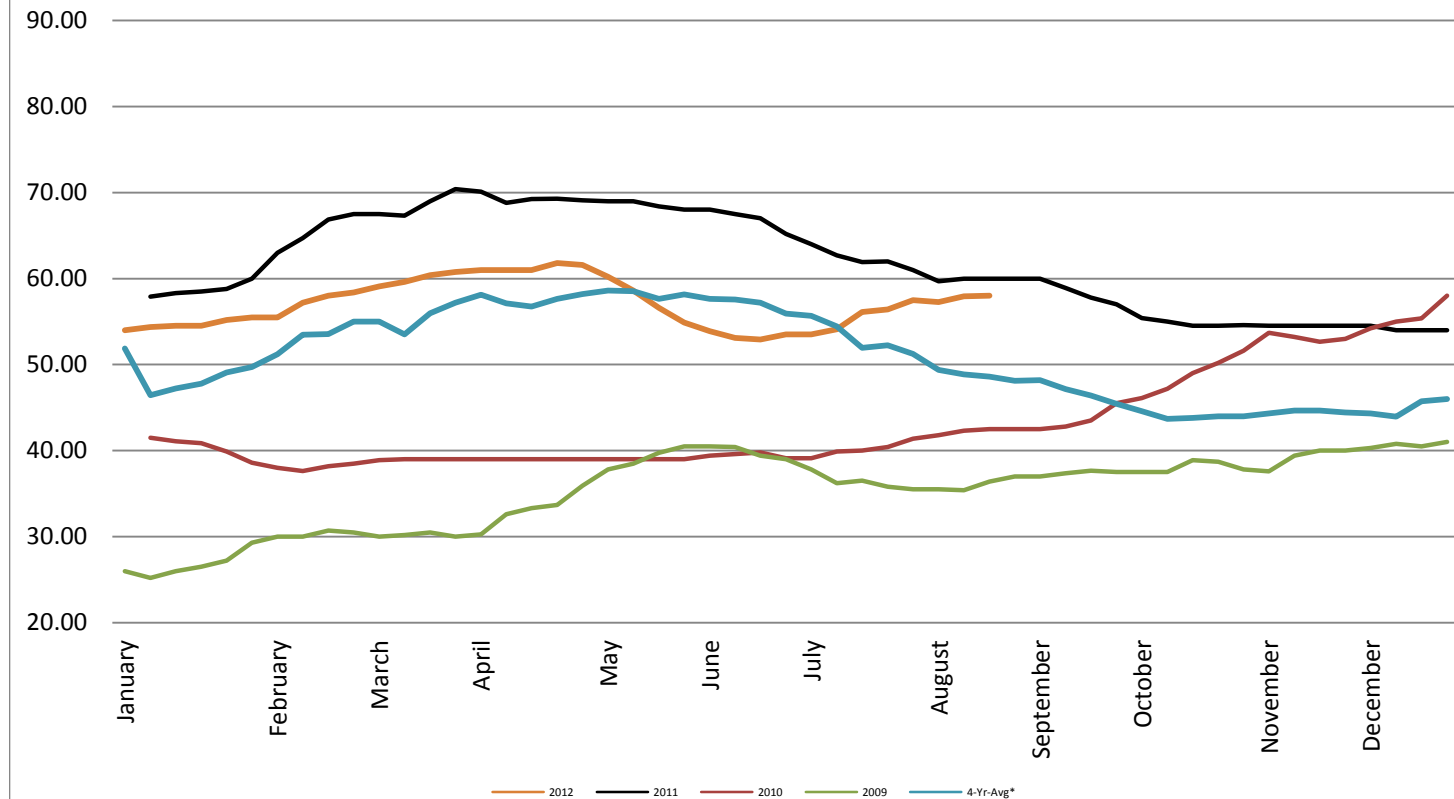


Georgia Dock Chicken - Final Weekly Price

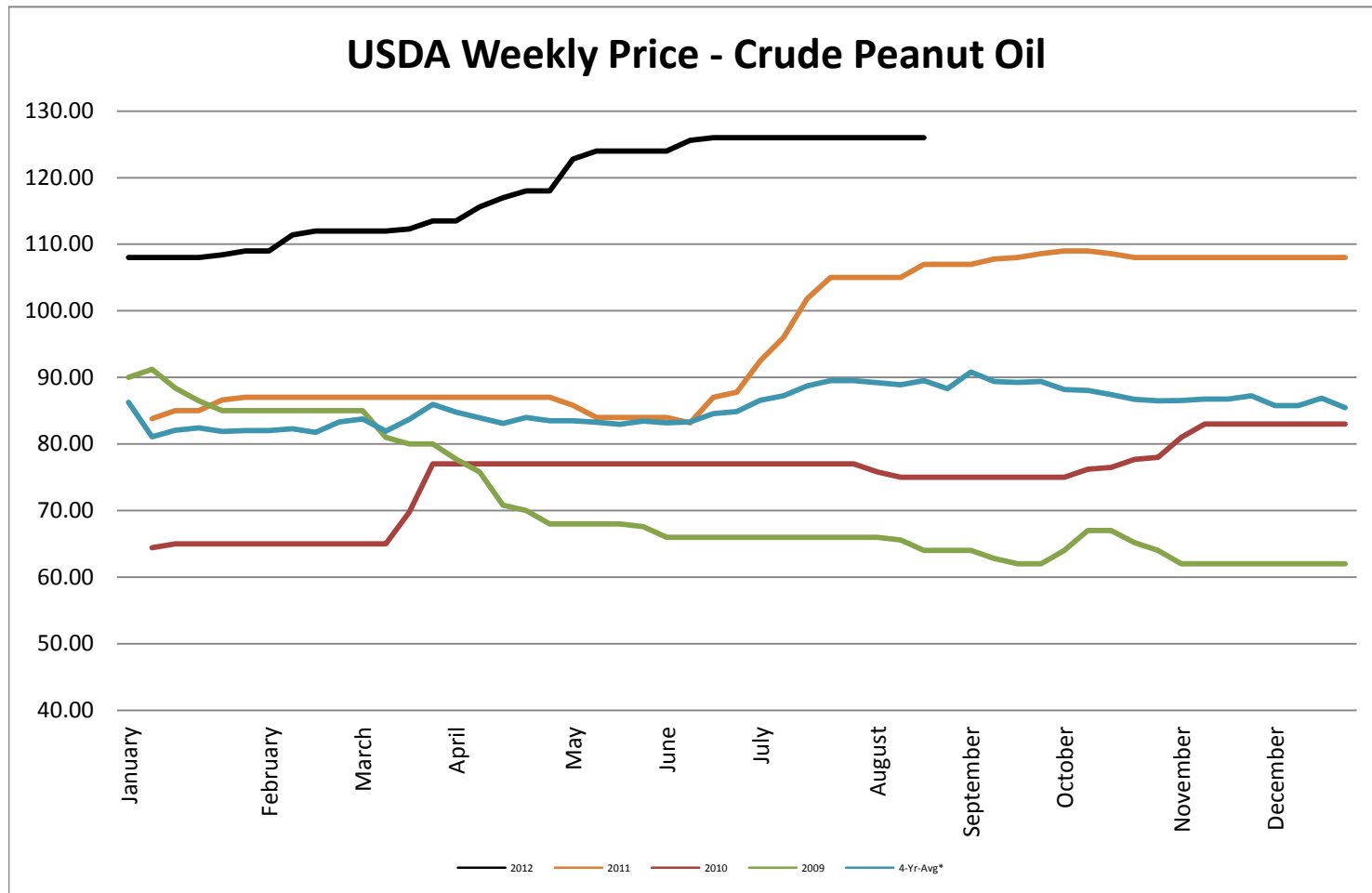


USDA Weekly Price - Crude Corn Oil

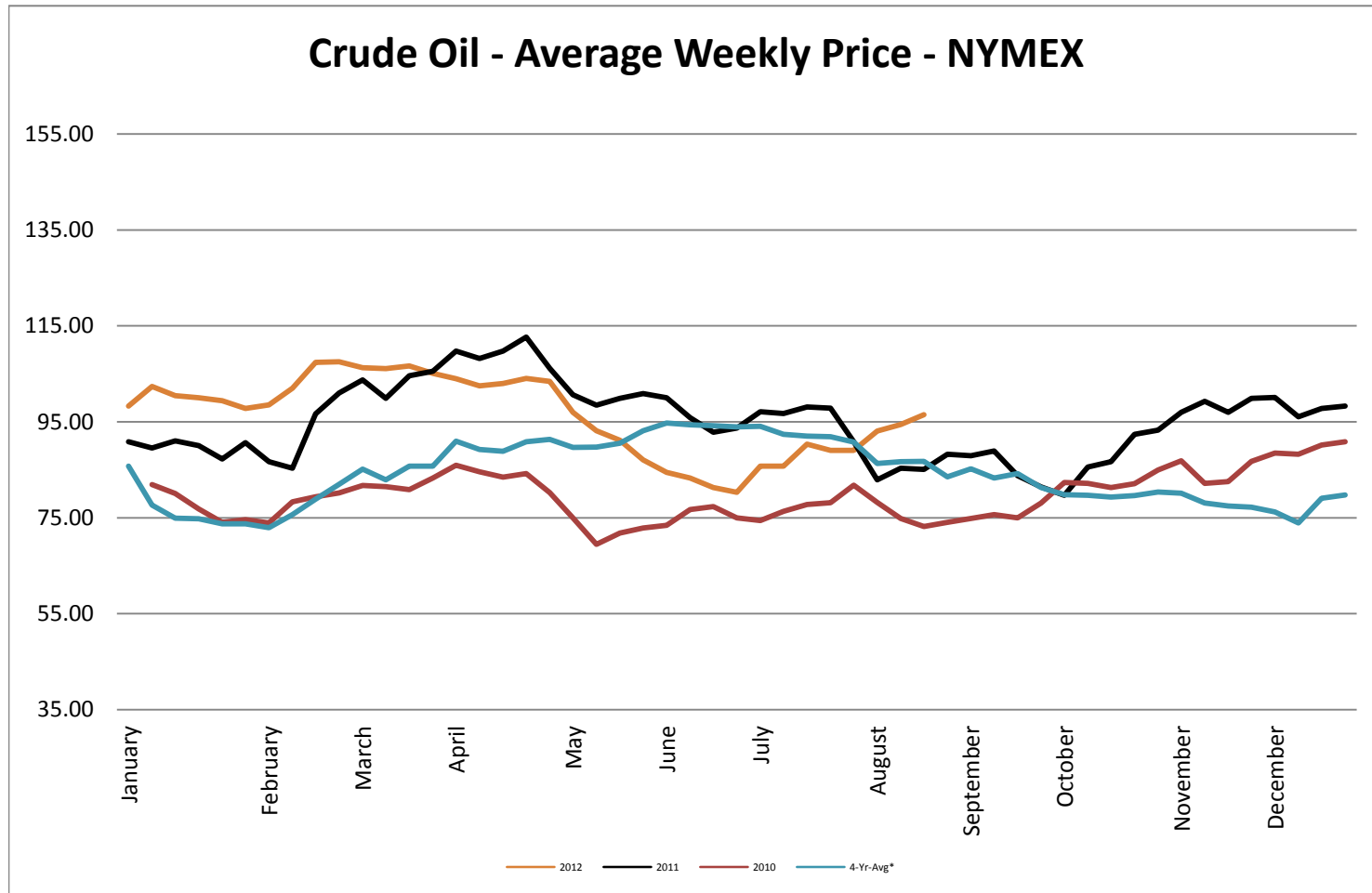
USDA Illinois Weekly Price - Crude Corn Oil

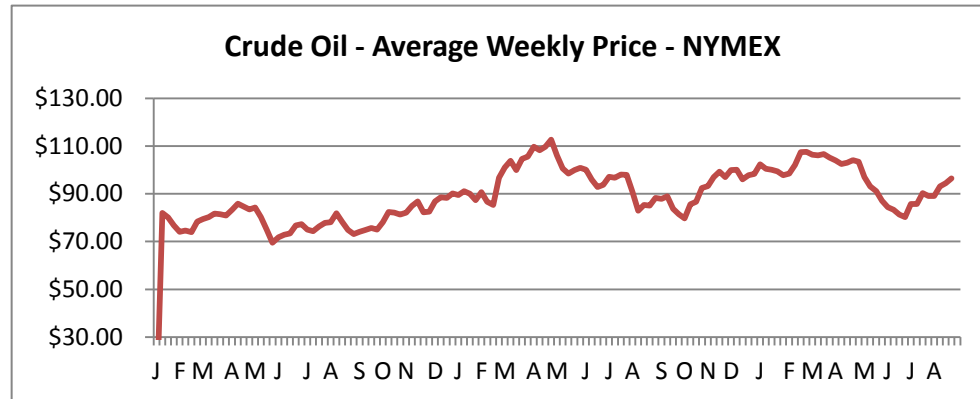


USDA Weekly Price - Crude Peanut Oil

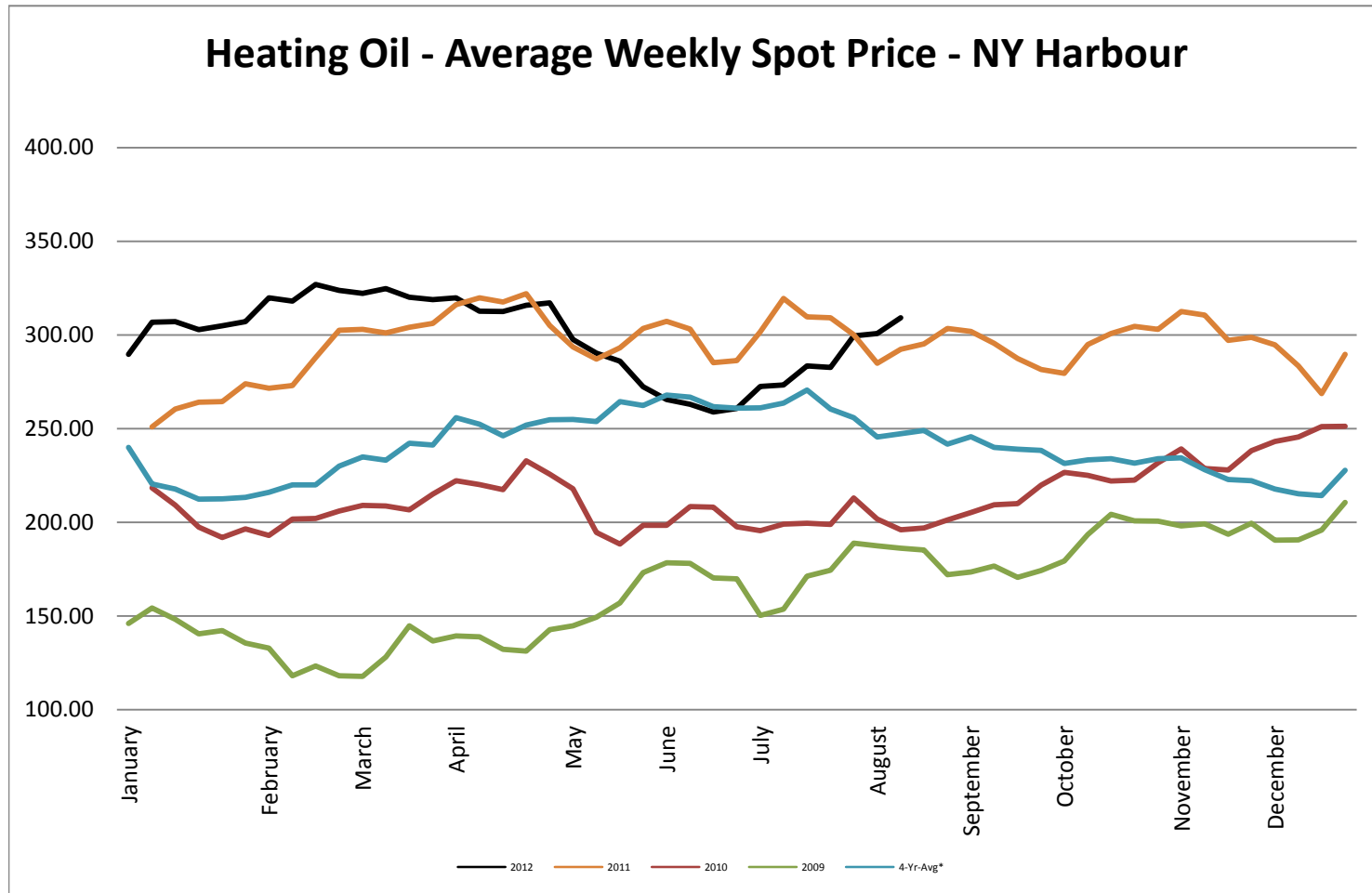


Crude Oil - Average Weekly Price - NYMEX

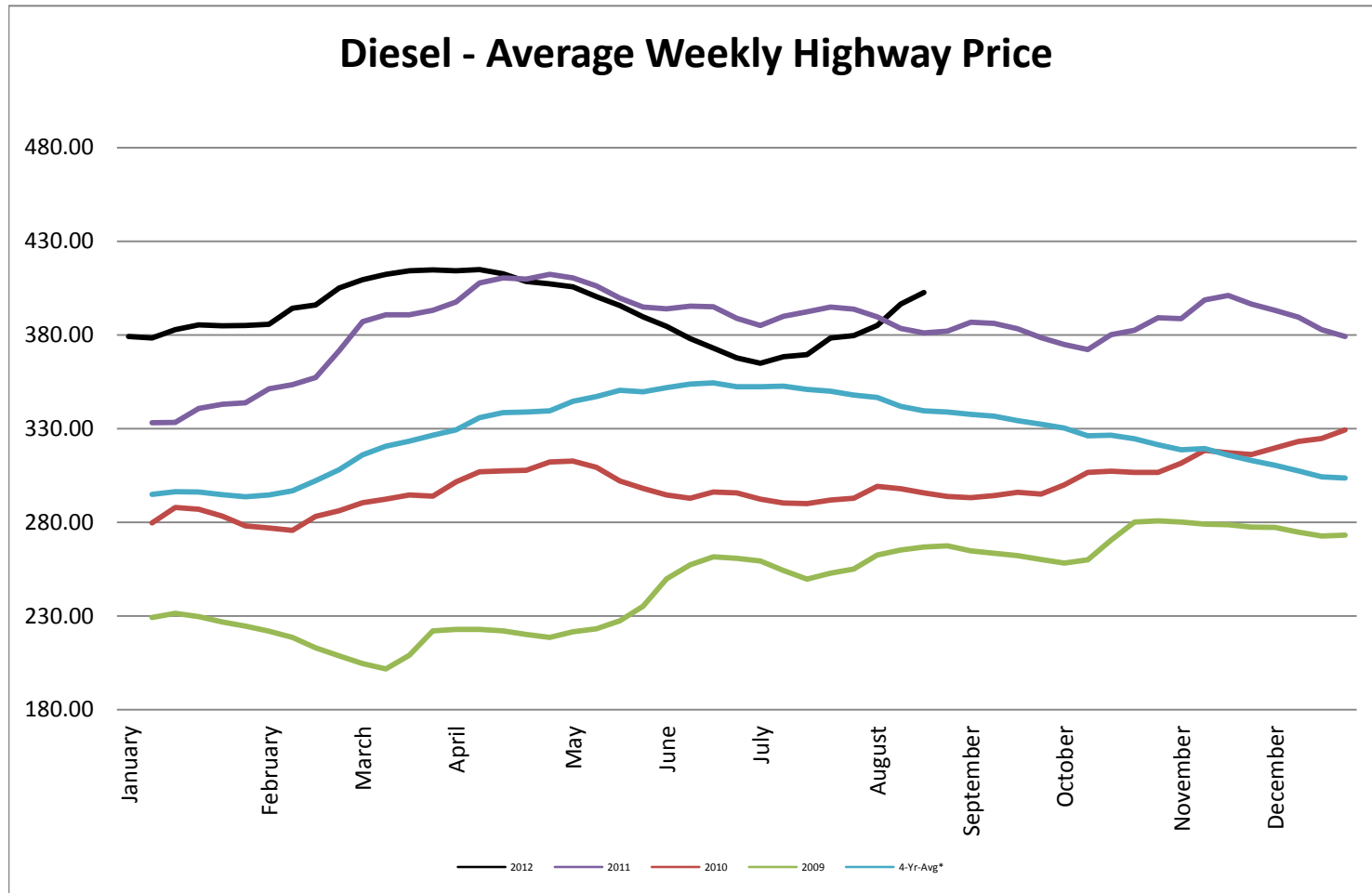




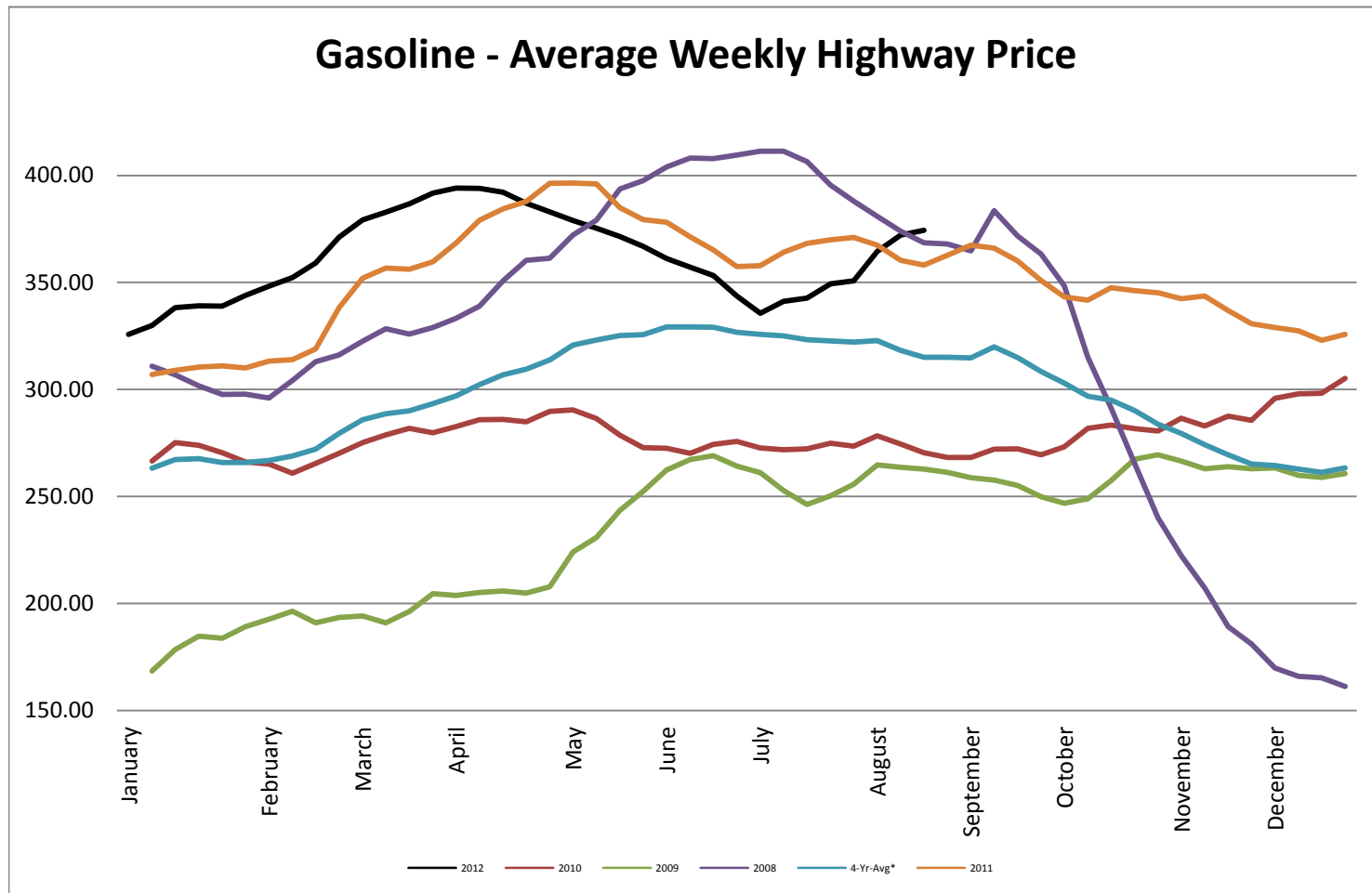
Heating Oil - Average Weekly Spot Price - NY Harbour



Diesel - Average Weekly Highway Price

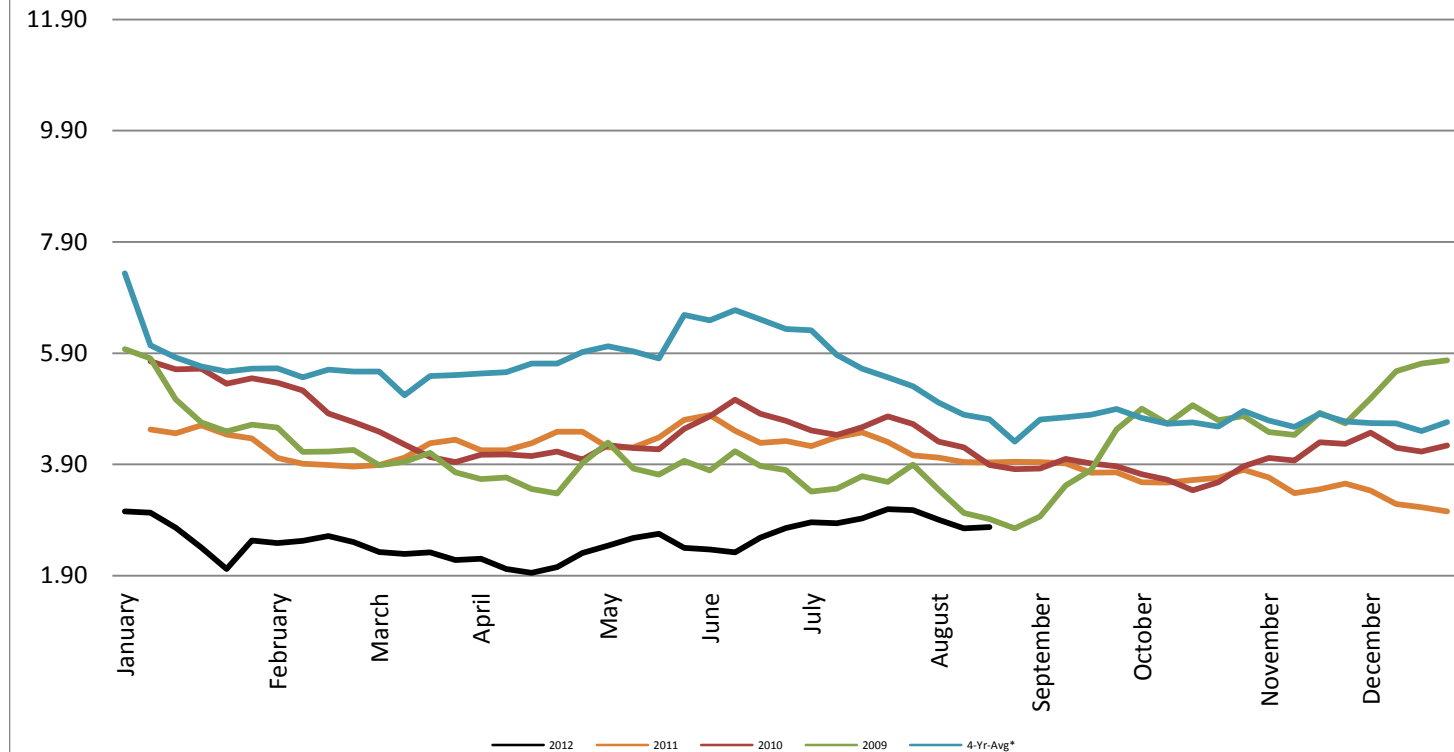


Gasoline Unleaded - Average Weekly Highway Price

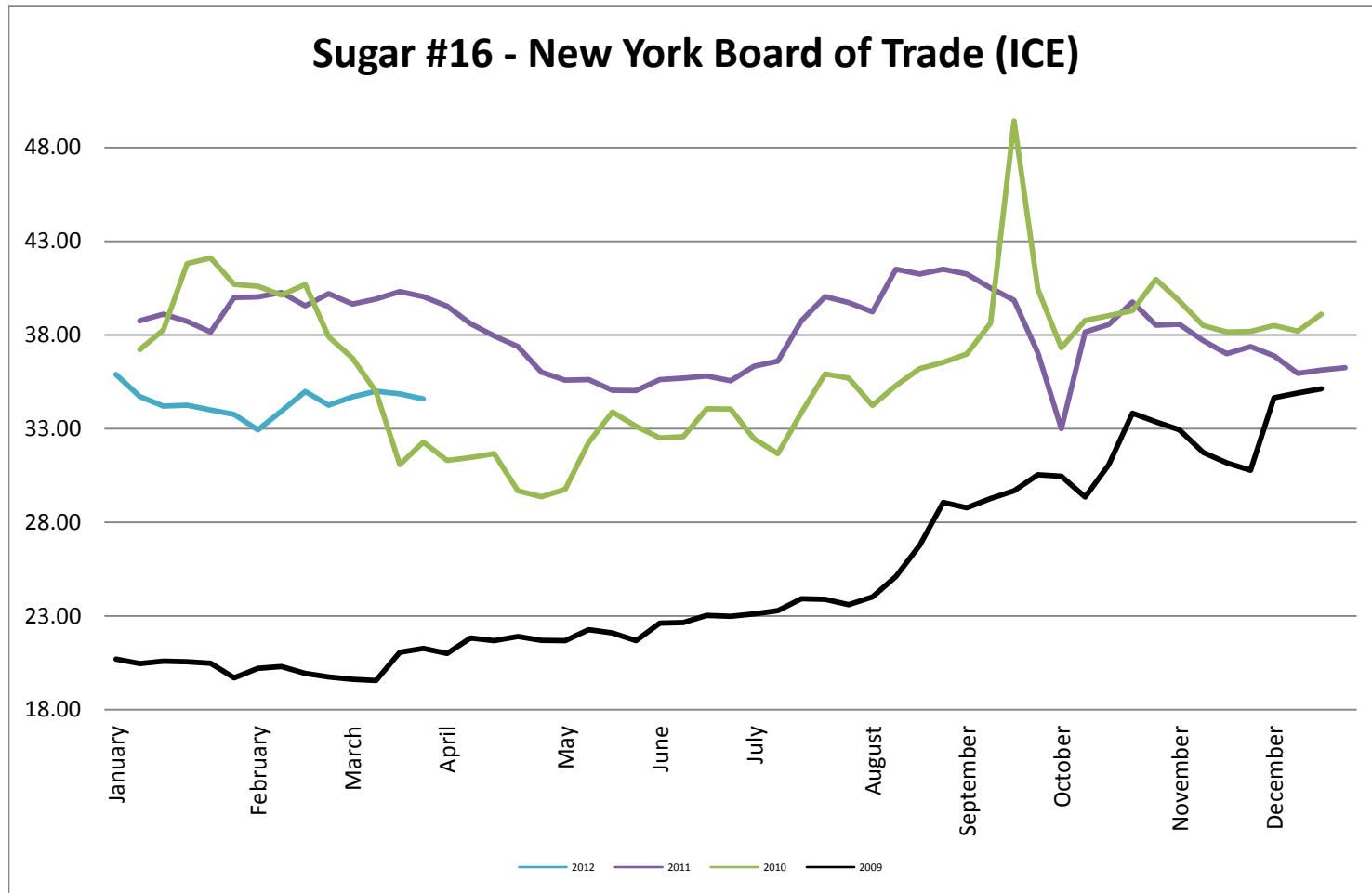


Natural Gas Futures - New York Mercantile Exchange

Natural Gas Futures - New York Mercantile Exchange



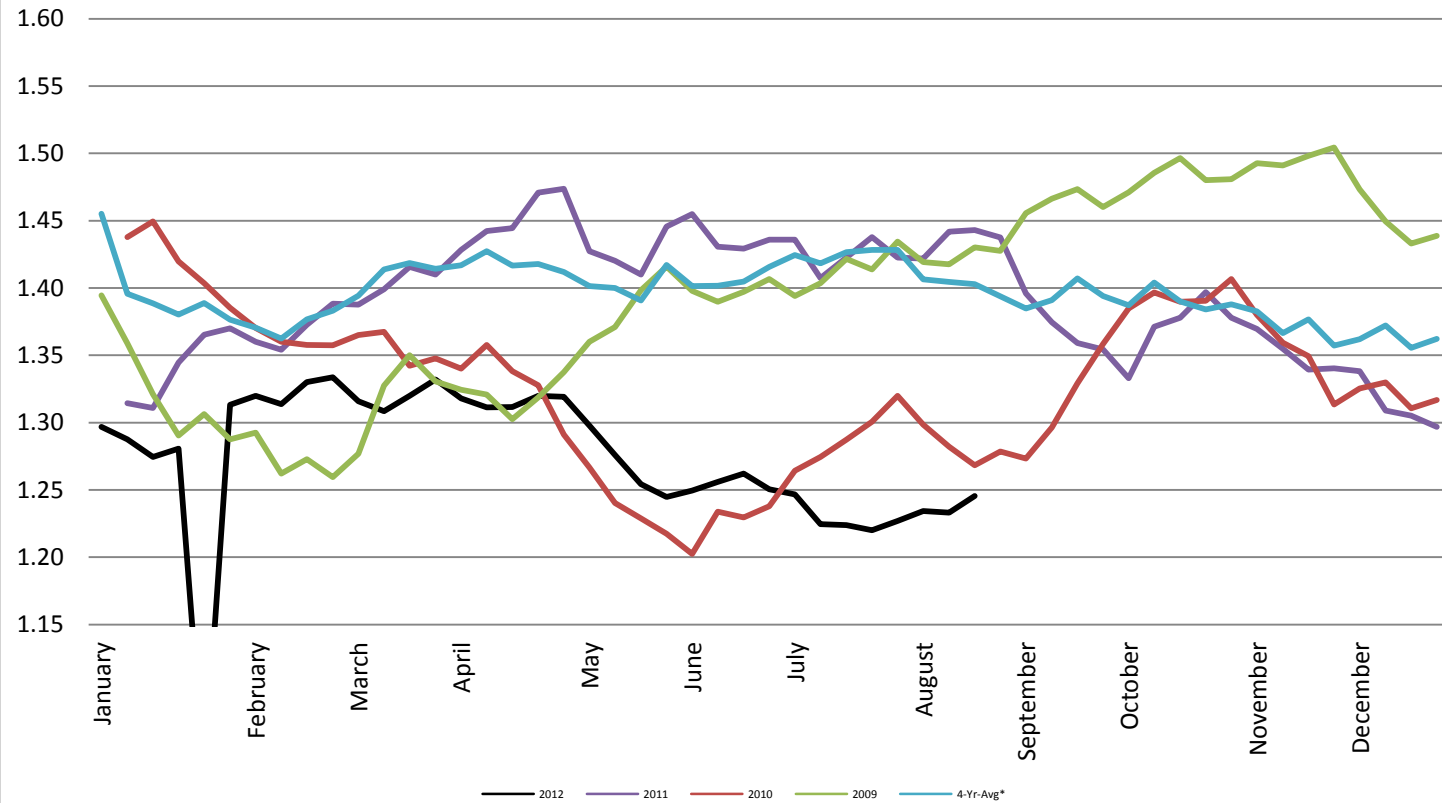
Sugar #16 - New York Board of Trade (ICE)



Foreign Exchange Rate - Euro, EMU Members

Foreign Exchange Rate - Euro, EMU Members

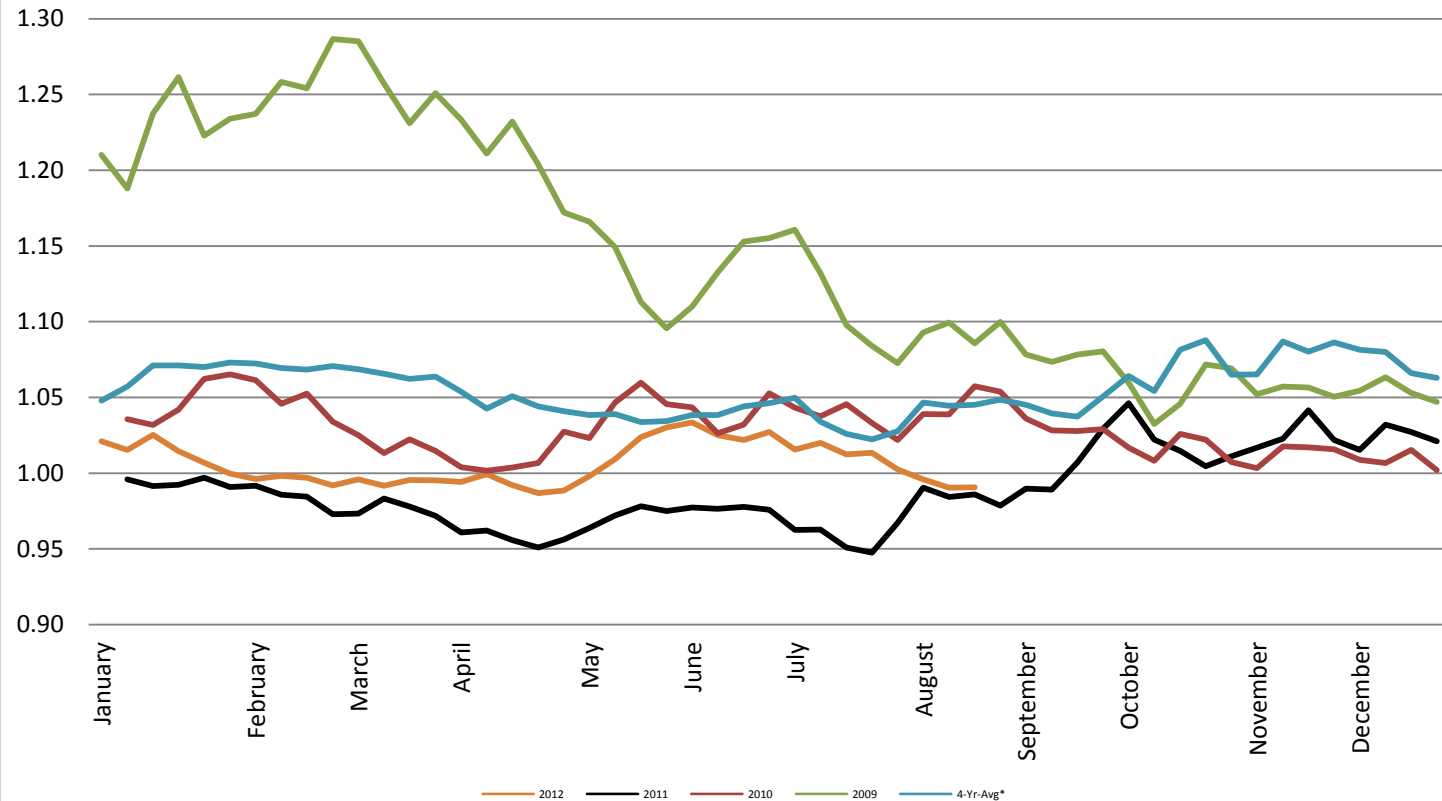
Federal Reserve Bank of New York



Foreign Exchange Rate - Canadian Dollar

Foreign Exchange Rate - Canadian Dollar

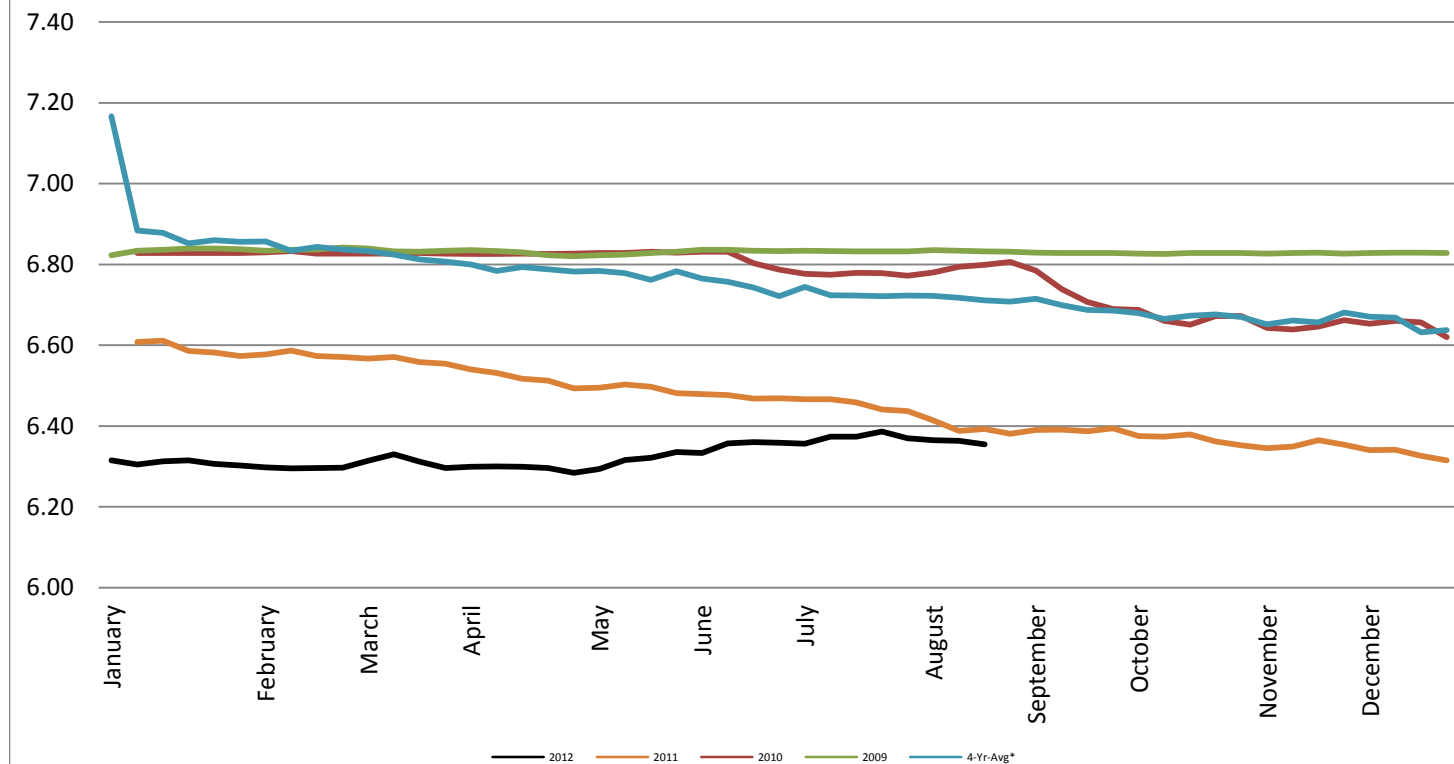
Federal Reserve Bank of New York



Foreign Exchange Rate - Chinese Yuan

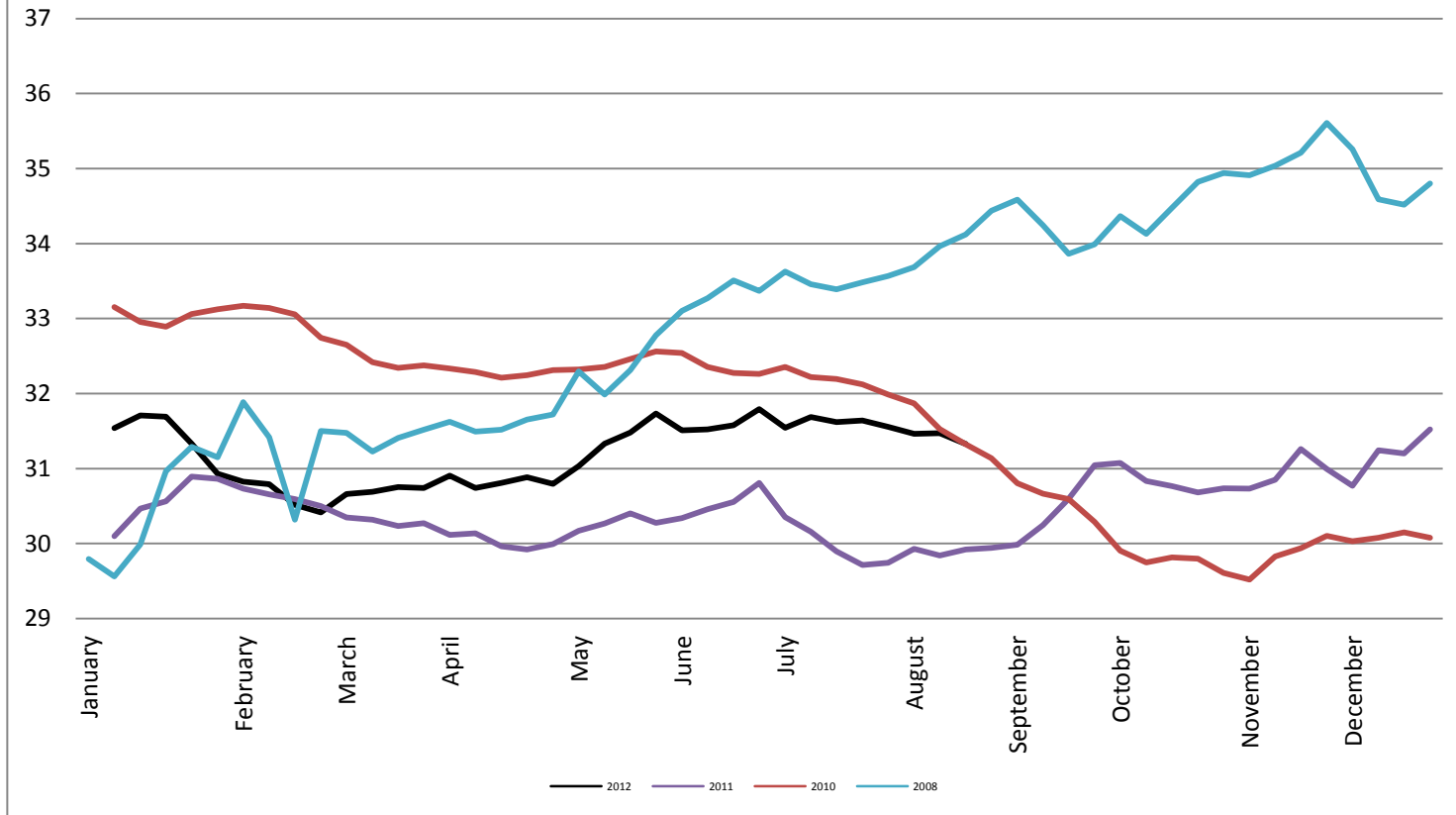
Foreign Exchange Rate - Chinese Yuan

Federal Reserve Bank of New York



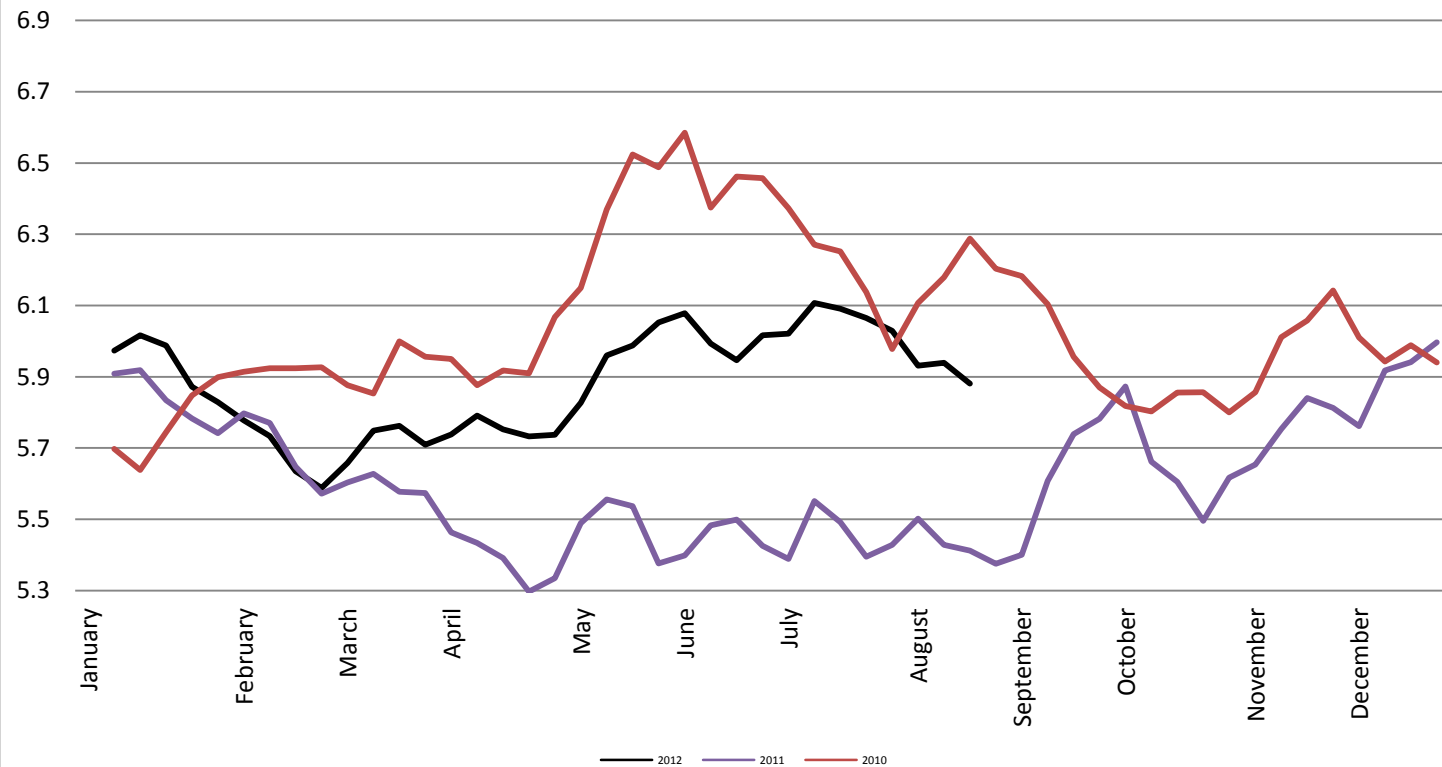
Foreign Exchange Rate

Thailand - Baht *Federal Reserve Bank of New York*



Foreign Exchange Rate

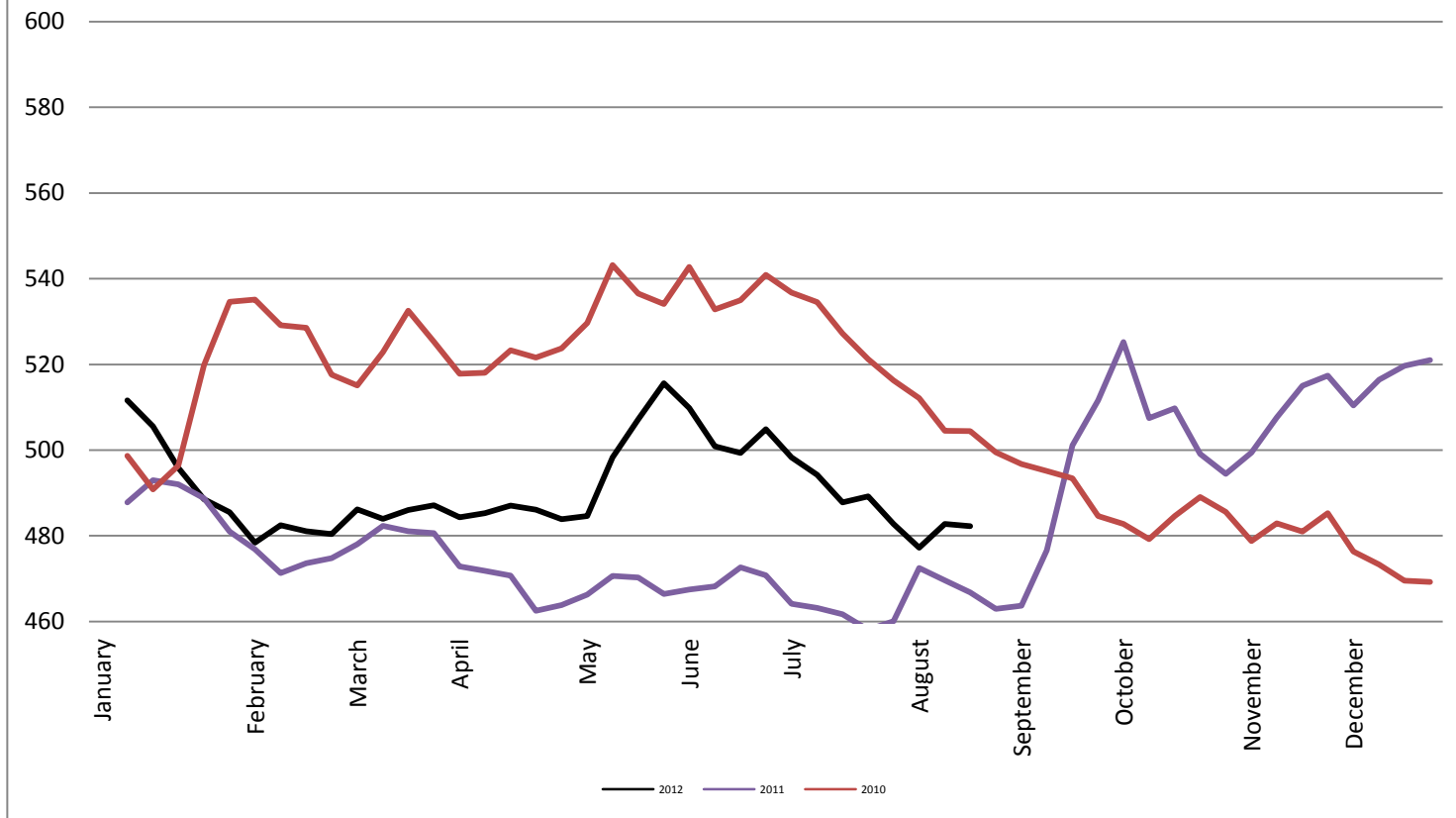
Nowegian Krone *Federal Reserve Bank of New York*



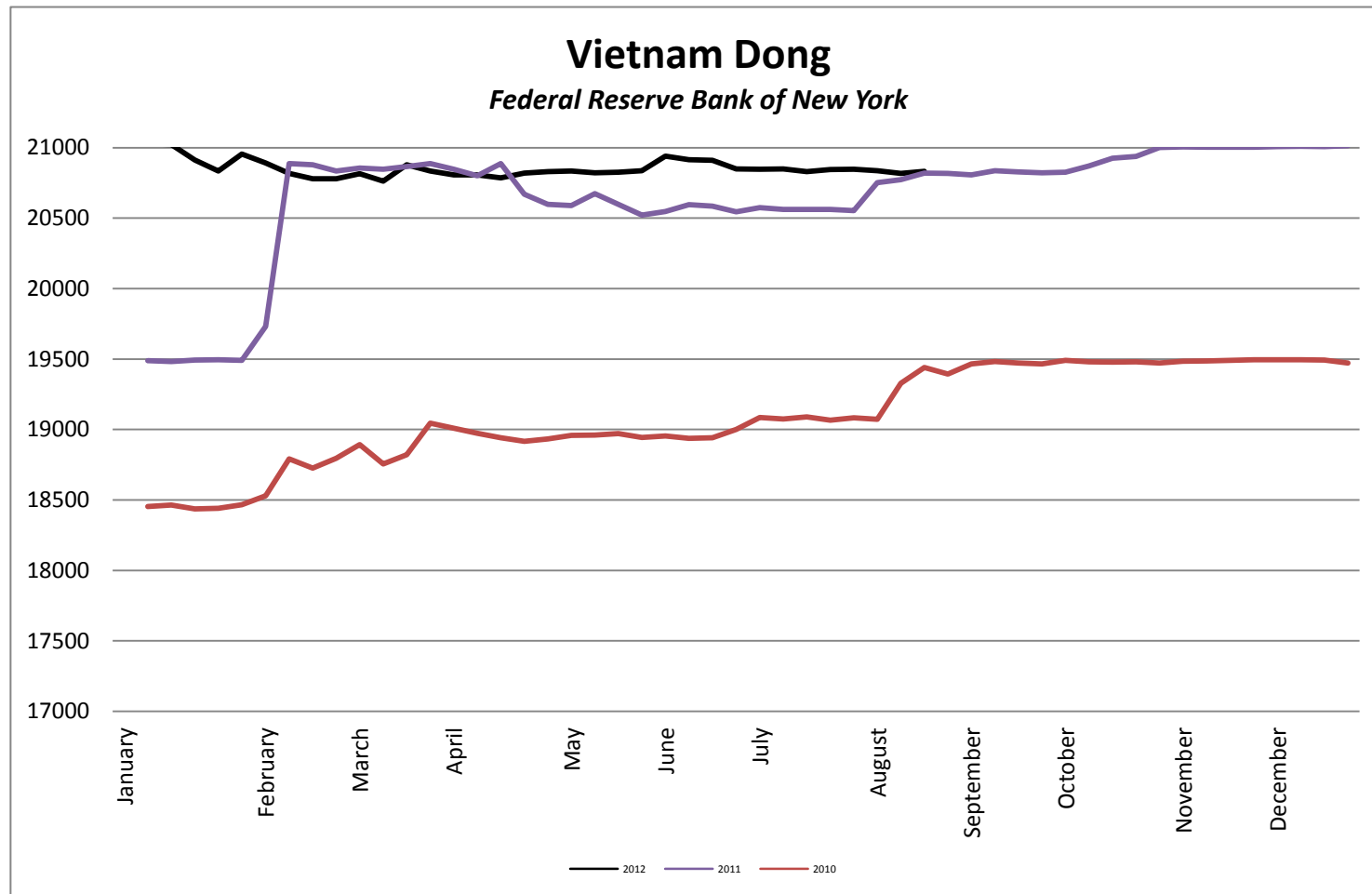
Foreign Exchange Rate

Chile Peso

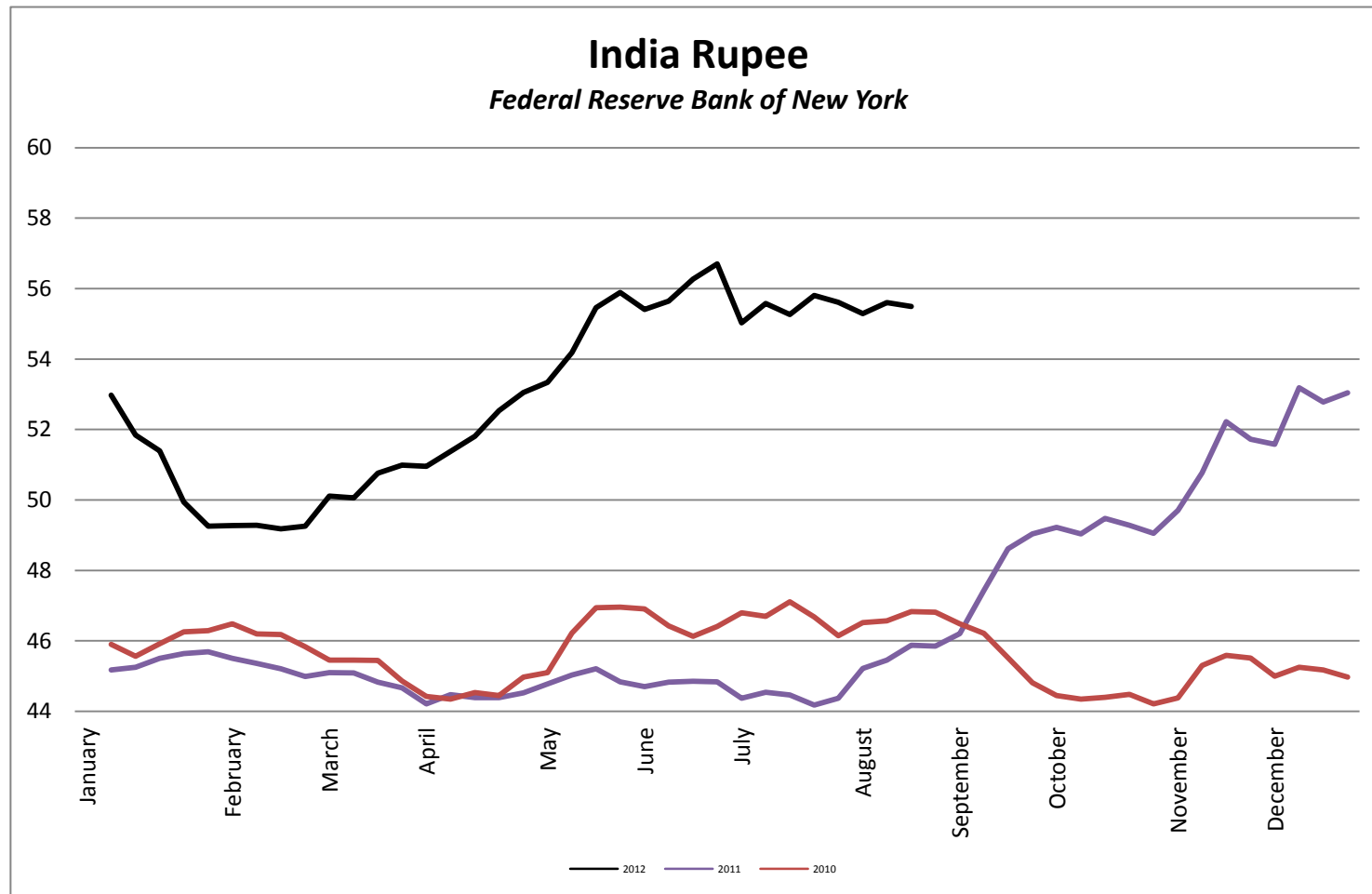
Federal Reserve Bank of New York



Foreign Exchange Rate



Foreign Exchange Rate



Foreign Exchange Rate

Peruvian New Sol

Federal Reserve Bank of New York

