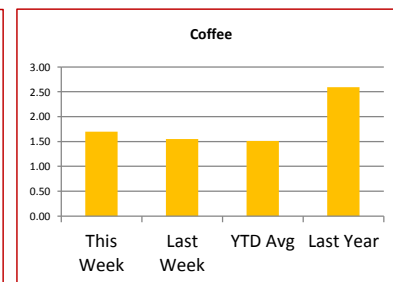
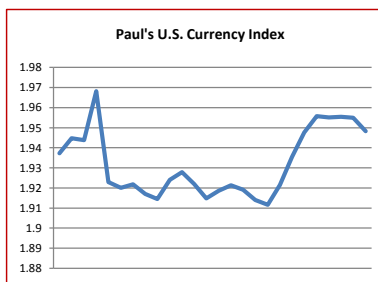
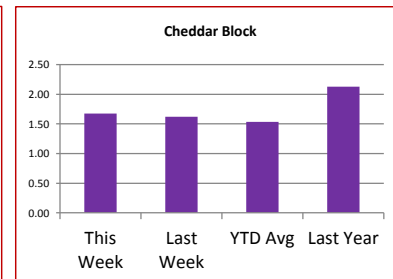
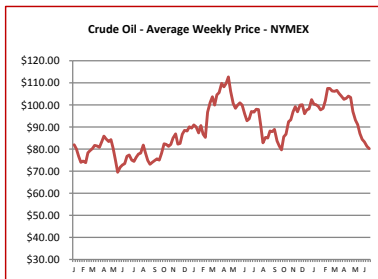
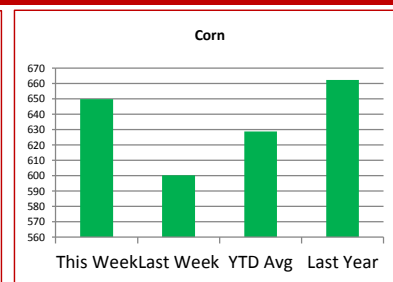
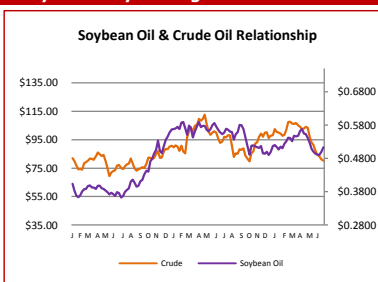


Key Commodity Report Weekly

July 2, 2012

Commodity Activity - Weekly Average

| 6/25/2012 | | This Week | Last Week | YTD Avg | Last Year | vs. Last Week | vs. Last Year |
|--|---|-----------|-----------|---------|-----------|---------------|---------------|
| CME Group | | | | | | | |
| Corn | ↑ | 649.90 | 600.25 | 628.71 | 662.35 | 8.27% | -1.88% |
| Soybean | ↑ | 1480.5 | 1429.1 | 1347.6 | 1325.0 | 3.59% | 11.73% |
| Soy Meal | ↑ | 429.90 | 423.84 | 375.09 | 338.58 | 1.43% | 26.97% |
| Soybean Oil | ↑ | 0.5131 | 0.4991 | 0.5263 | 0.5525 | 2.81% | -7.13% |
| Rough Rice | ↓ | 14.19 | 14.47 | 15.11 | 13.52 | -1.94% | 4.99% |
| Wheat | ↑ | 729.85 | 655.75 | 641.53 | 616.75 | 11.30% | 18.34% |
| Cheddar Barrel | ↑ | 1.604 | 1.560 | 1.501 | 2.086 | 2.82% | -23.11% |
| Cheddar Block | ↑ | 1.672 | 1.620 | 1.537 | 2.129 | 3.24% | -21.47% |
| Milk Class III | ↑ | 16.15 | 15.65 | 15.93 | 19.49 | 3.18% | -17.11% |
| Butter AA | ↓ | 1.522 | 1.536 | 1.458 | 2.030 | -0.91% | -25.05% |
| Source: CME Group | | | | | | | |
| USDA Weekly Prices | | | | | | | |
| Live Cattle | ↓ | 1.164 | 1.195 | 1.232 | 1.123 | -2.58% | 3.63% |
| Course Ground Beef | ↓ | 2.060 | 2.150 | 2.138 | 1.955 | -4.19% | 5.37% |
| Live Hog | ↑ | 0.6390 | 0.6340 | 0.5760 | 0.6600 | 0.79% | -3.18% |
| Pork Bellies | ↑ | 1.35 | 1.31 | 1.09 | 1.31 | 3.05% | 3.05% |
| Chicken Whole (GA Dock) | ↔ | 0.9450 | 0.9450 | 0.9261 | 0.8700 | 0.00% | 8.62% |
| Crude Corn Oil | ↑ | 53.50 | 52.90 | 57.30 | 65.20 | 1.13% | -17.94% |
| Crude Peanut Oil | ↔ | 126.00 | 126.00 | 115.63 | 87.80 | 0.00% | 43.51% |
| Source: USDA | | | | | | | |
| NYMEX Futures & Retail | | | | | | | |
| Crude Oil | ↓ | 80.29 | 81.31 | 98.25 | 93.73 | -1.26% | -14.34% |
| Heating Oil No.2 Spot | ↔ | 263.15 | 263.15 | 307.00 | 286.26 | 0.00% | -8.07% |
| On Highway Diesel | ↓ | 367.80 | 372.90 | 395.53 | 388.80 | -1.37% | -5.40% |
| On Highway Gasoline | ↓ | 343.70 | 353.30 | 364.65 | 357.40 | -2.72% | -3.83% |
| Natural Gas | ↑ | 2.756 | 2.581 | 2.432 | 4.323 | 6.78% | -36.25% |
| Source: New York Mercantile Exchange | | | | | | | |
| Federal Reserve | | | | | | | |
| *Euro | ↓ | 1.2504 | 1.2622 | 1.2860 | 1.4359 | -0.93% | -12.92% |
| *British Pound | ↓ | 1.5584 | 1.5669 | 1.5520 | 1.5990 | -0.54% | -2.54% |
| Canadian Dollar | ↑ | 1.0272 | 1.0219 | 1.0064 | 0.9759 | 0.52% | 5.26% |
| Chinese Yuan | ↓ | 6.359 | 6.360 | 6.313 | 6.469 | -0.02% | -1.70% |
| Swiss Frank | ↓ | 0.914 | 0.962 | 0.929 | 0.838 | -5.04% | 8.98% |
| Source: Federal Reserve Bank of New York | | | | | | | |
| NYBOT Futures | | | | | | | |
| Sugar 16 | ↓ | 28.00 | 28.40 | 36.41 | 35.55 | -1.41% | -21.23% |
| Coffee | ↑ | 1.7010 | 1.5515 | 1.5125 | 2.5942 | 9.64% | -34.43% |
| Source: Intercontinental Exchange | | | | | | | |



Market Commentary

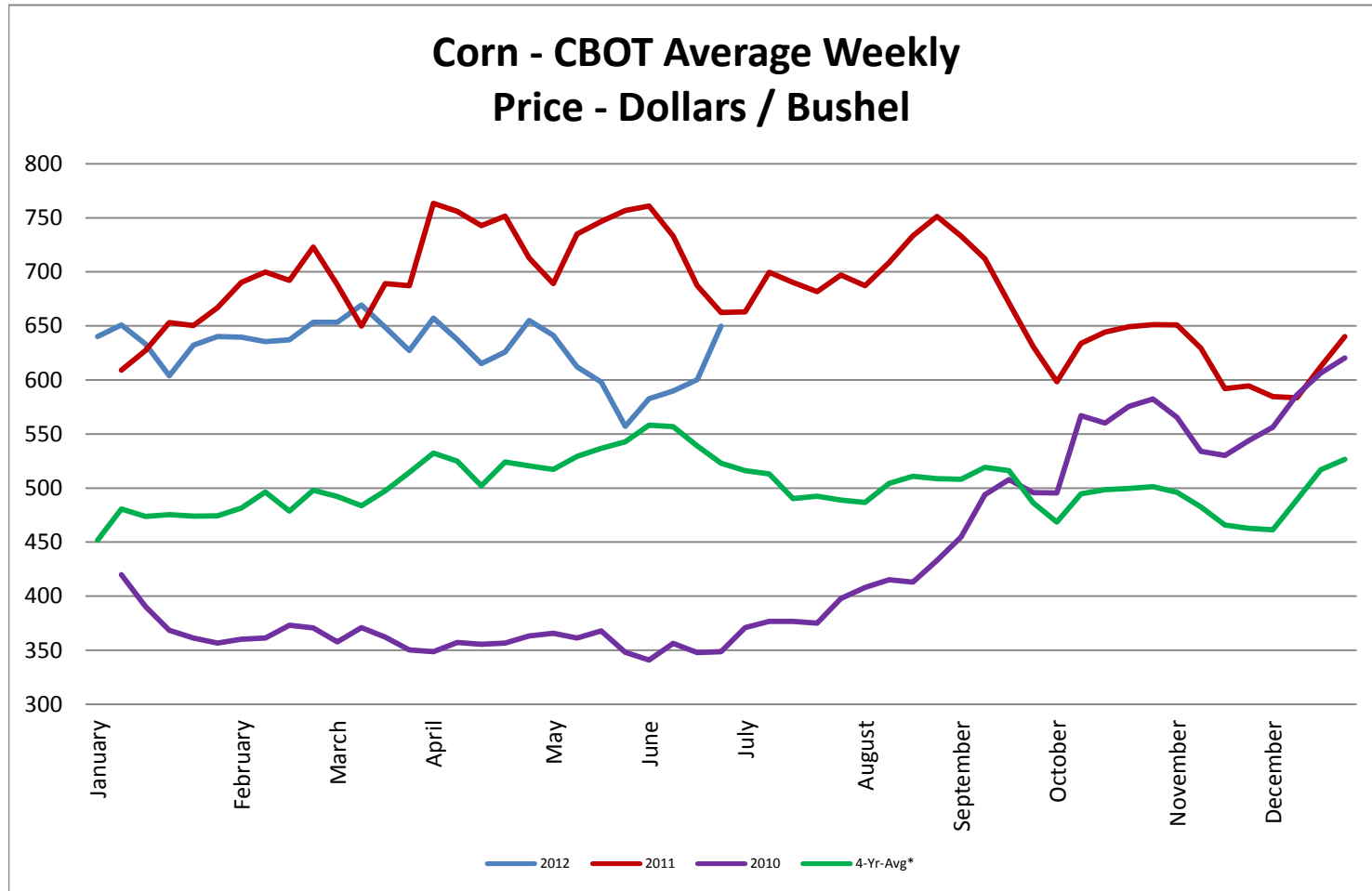
Commentary: What a difference a week makes. Corn and wheat are leading the upward trend versus a week ago, but the soybean complex is following right behind and will likely continue the trend. Weather continues to be less than ideal in the growing regions. The drought continues really hurting the corn crop and the USDA crop condition reports keep showing a decline in corn crop ratings. The USDA, to no surprise, is also showing poor ratings for the soybean crop. Soybeans are in a slightly better situation as August is the most important part of growing time for beans, but they still need moisture now. With both corn and beans having less than ideal on hand stocks, a poor crop from South America, and increasing demand, futures will continue to climb. Export reports are showing an increase. China will likely put on some coverage for old crop beans (last year's harvest) to ensure they get their supply. We will have to ration demand and price is the best way to do that. Higher prices will scare some off, which is why China is likely to cover now. To add to this news, it is also likely that some fund money, possibly quite a bit, will start to come back into agricultural commodities, as they smell blood. Winter wheat is being harvested now. Spring wheat is in the ground and experiencing the drought like corn and beans. Wheat futures are through the roof right now.

Corn futures closed between \$6.31 and \$6.72 per bushel, ending the week at \$6.72.
 Soybean futures closed between \$14.66 and \$15.12 per bushel, ending the week at \$15.12.
 Soybean meal futures closed between \$426.60 and \$436.00 per short ton, ending the week at \$436.00.
 Soybean oil futures closed between \$0.5088 and \$0.5221 per pound, ending the week at \$0.5221.
 Wheat futures closed between \$7.24-1/2 and \$7.39 per bushel, ending the week at \$7.39.

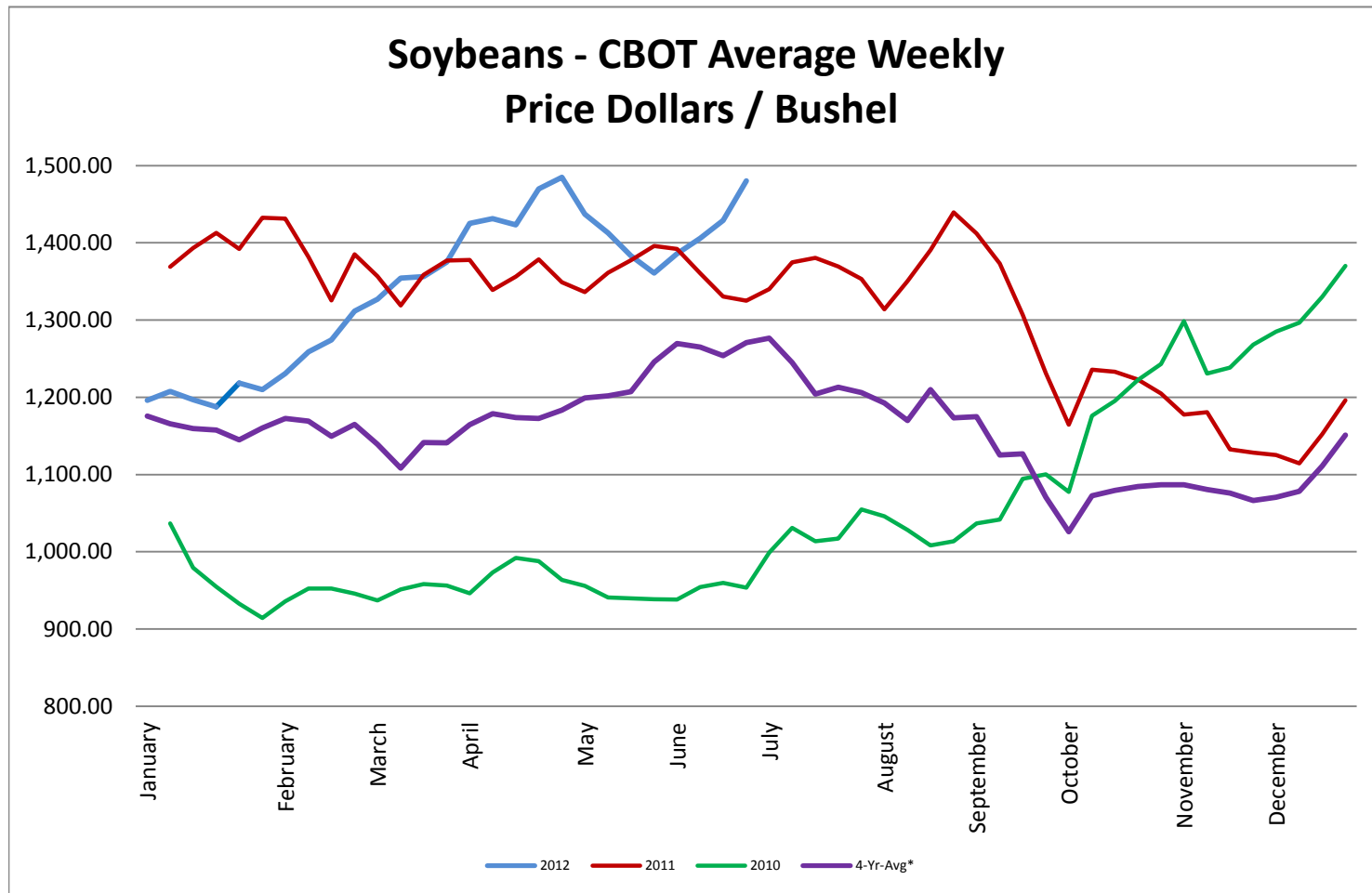
* Used as the indexing unit of measure for this exchange rate

Commodity Information: Commodity information found in this sheet is publicly available. It can be found from numerous sources, all of which are noted. This report is for informational purposes only. Please do not make hedging or buying decisions based on this report. Please note that rounding can affect the percent of change values.

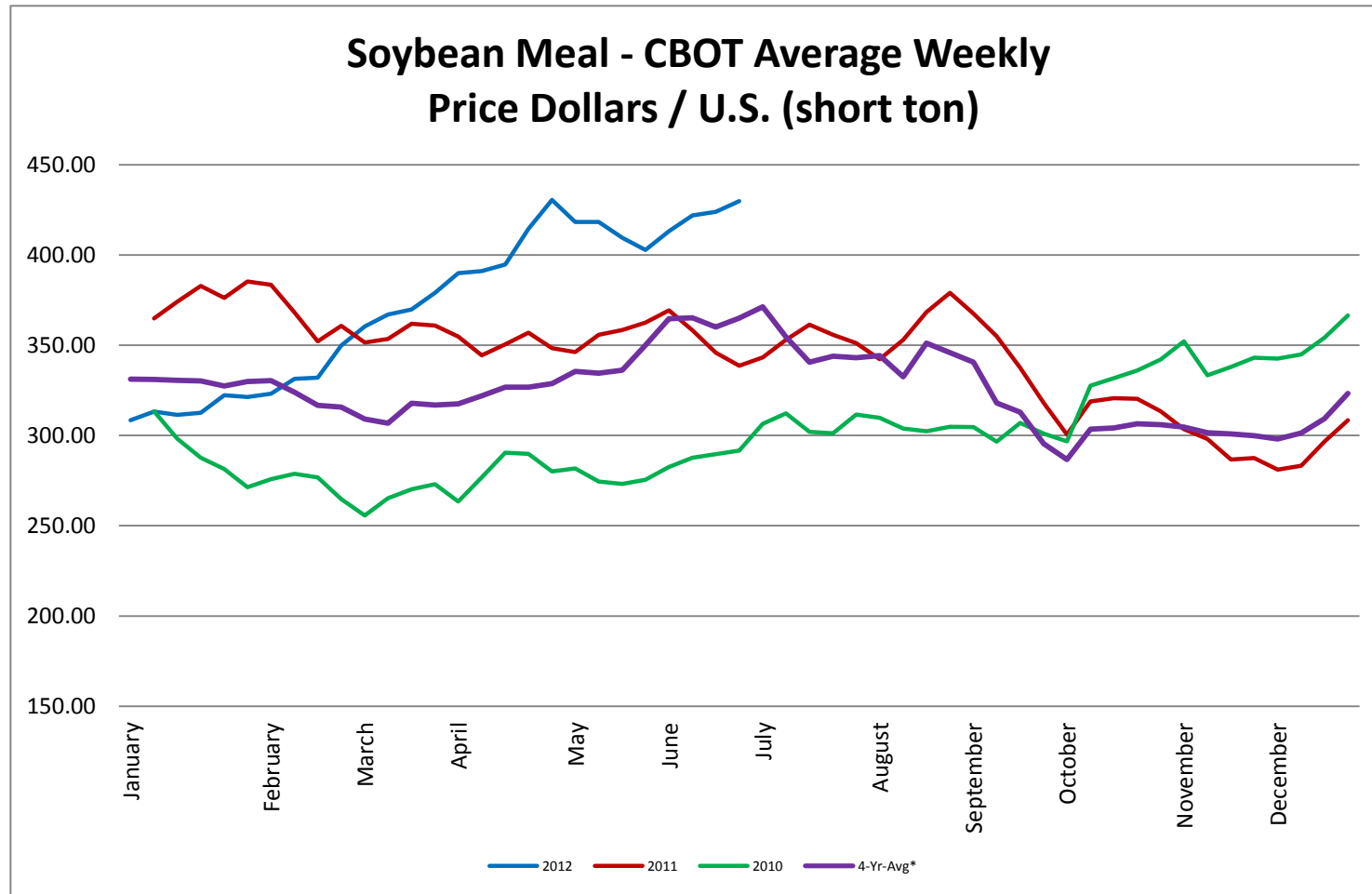
Corn - CBOT Weekly Futures Price



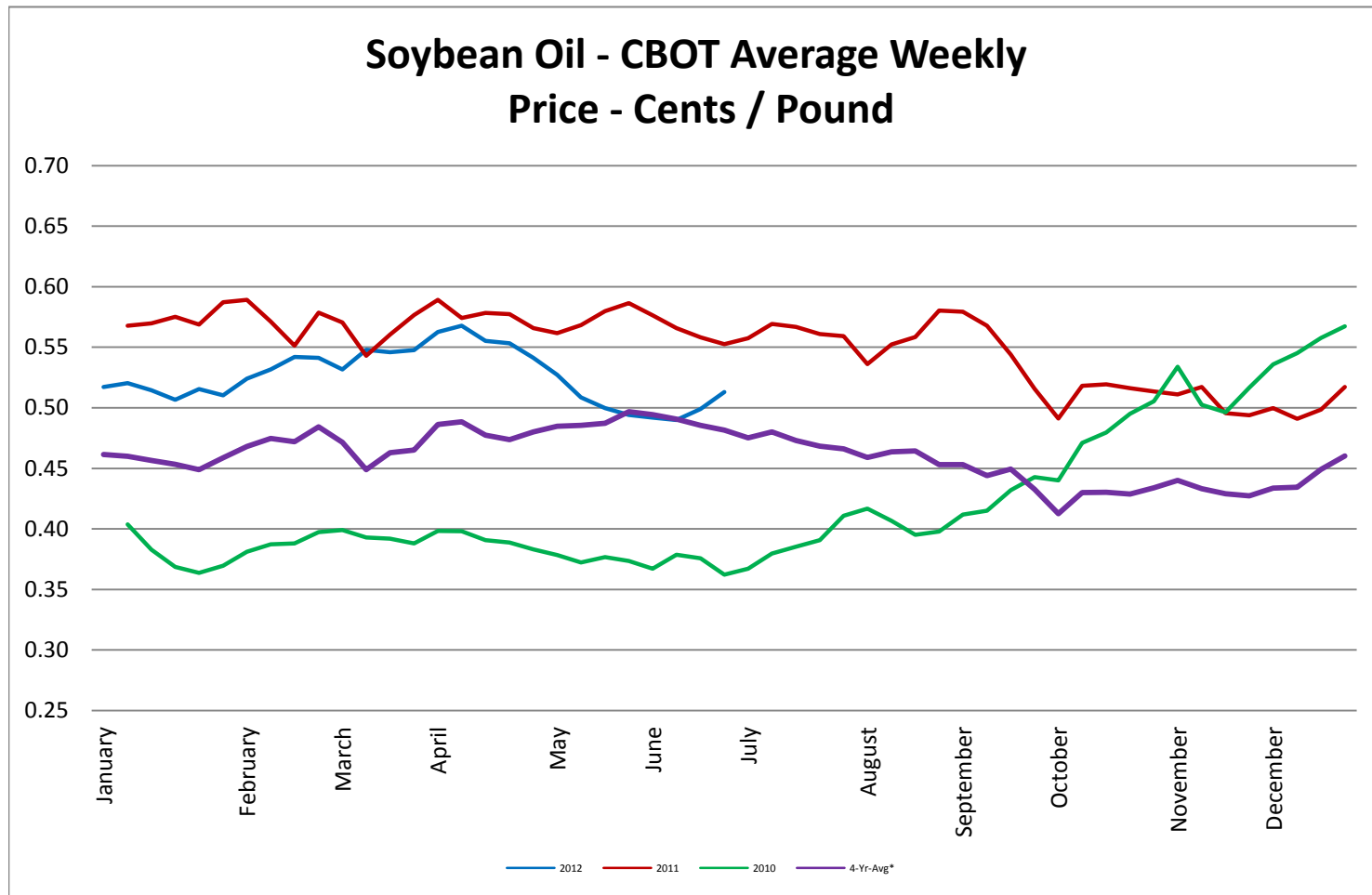
Soybeans - CBOT Weekly Average Price - Dollars / Bushel



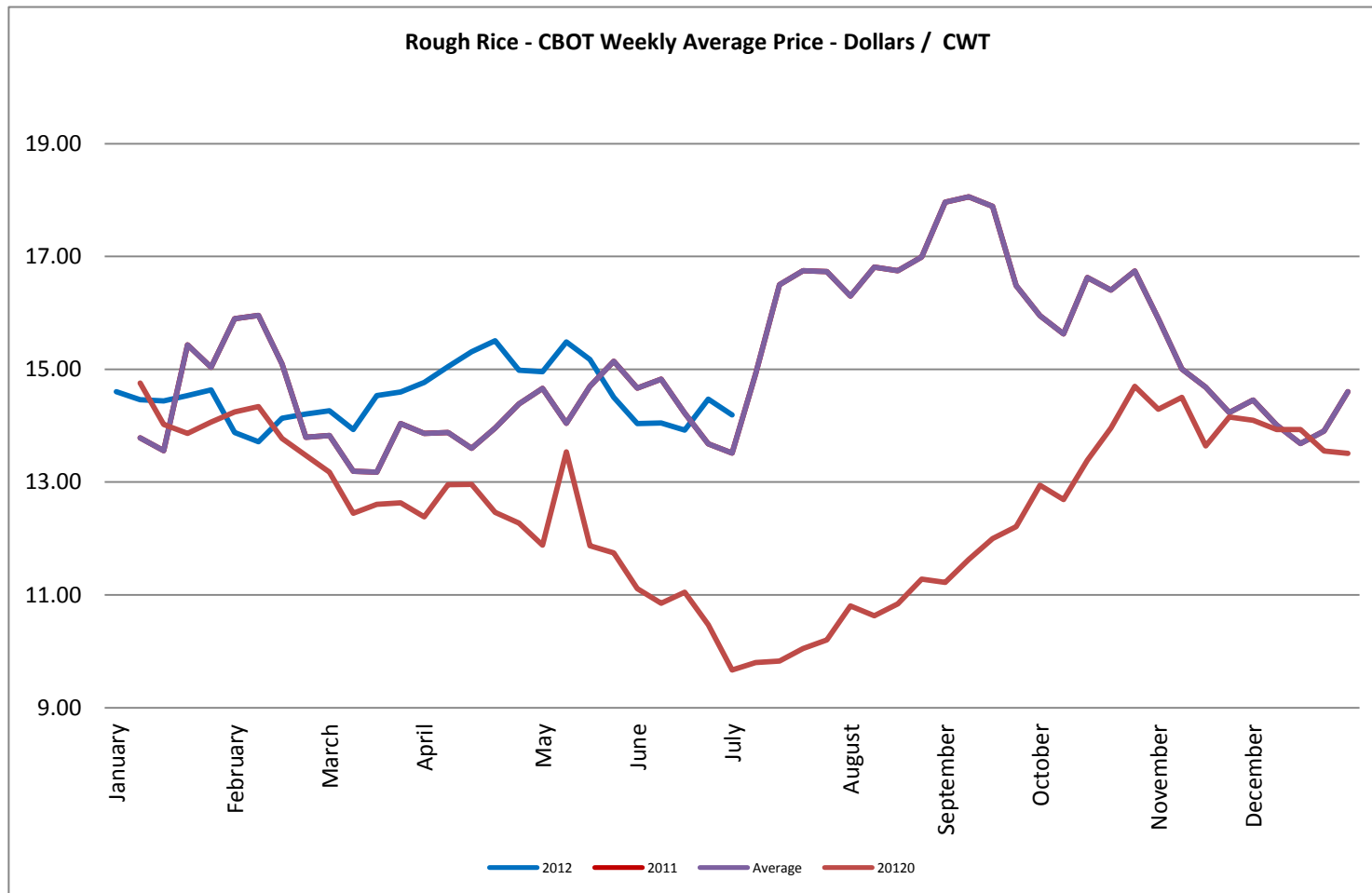
Soybean Meal - CBOT Weekly Average Price - Dollars / US Ton



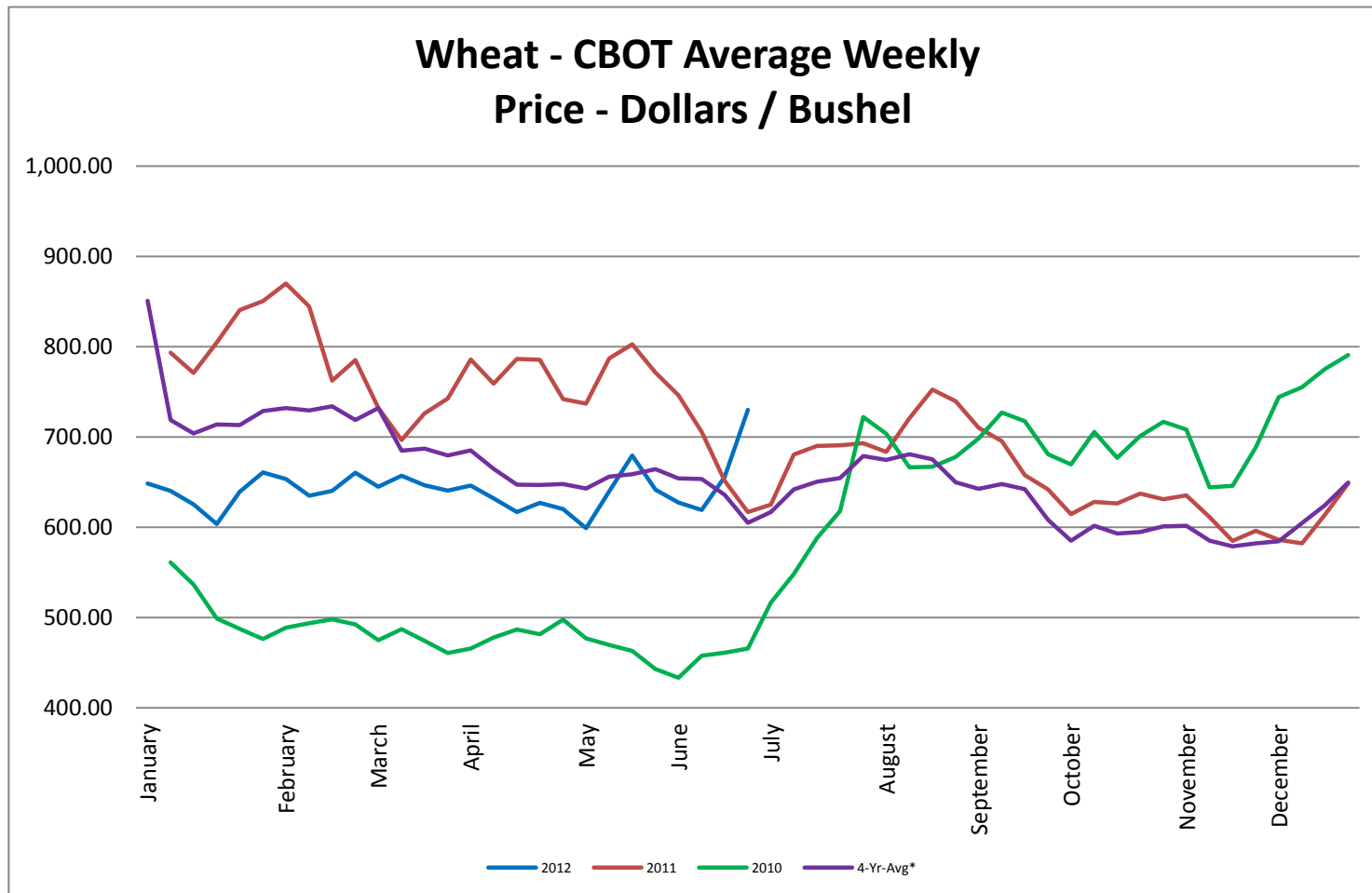
Soybean Oil - CBOT Weekly Average Price - Cents / Pound



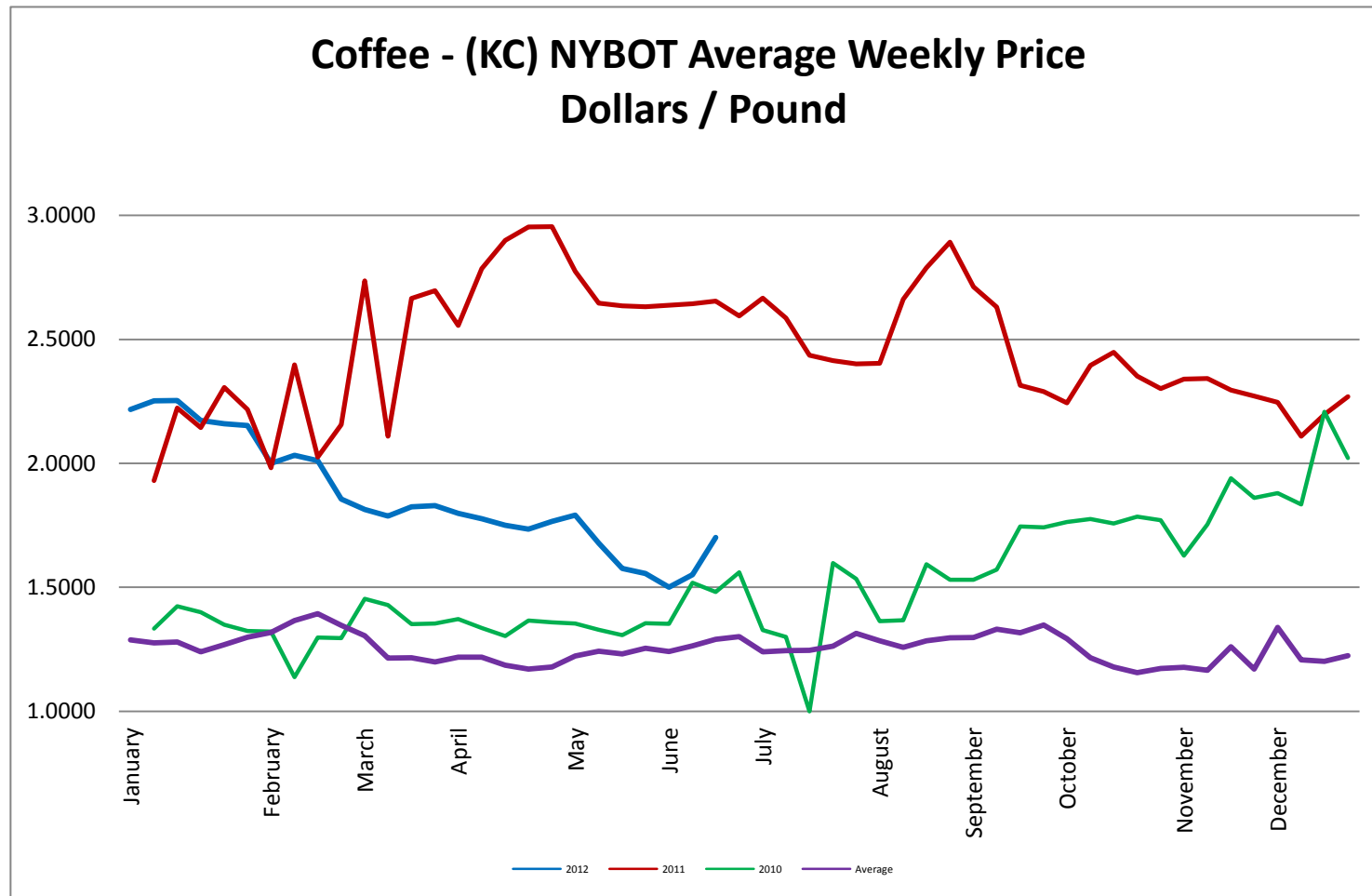
Rough Rice - CBOT Weekly Average Price - Dollars / CWT



Wheat - CBOT Weekly Average Price - Dollars / Bushel

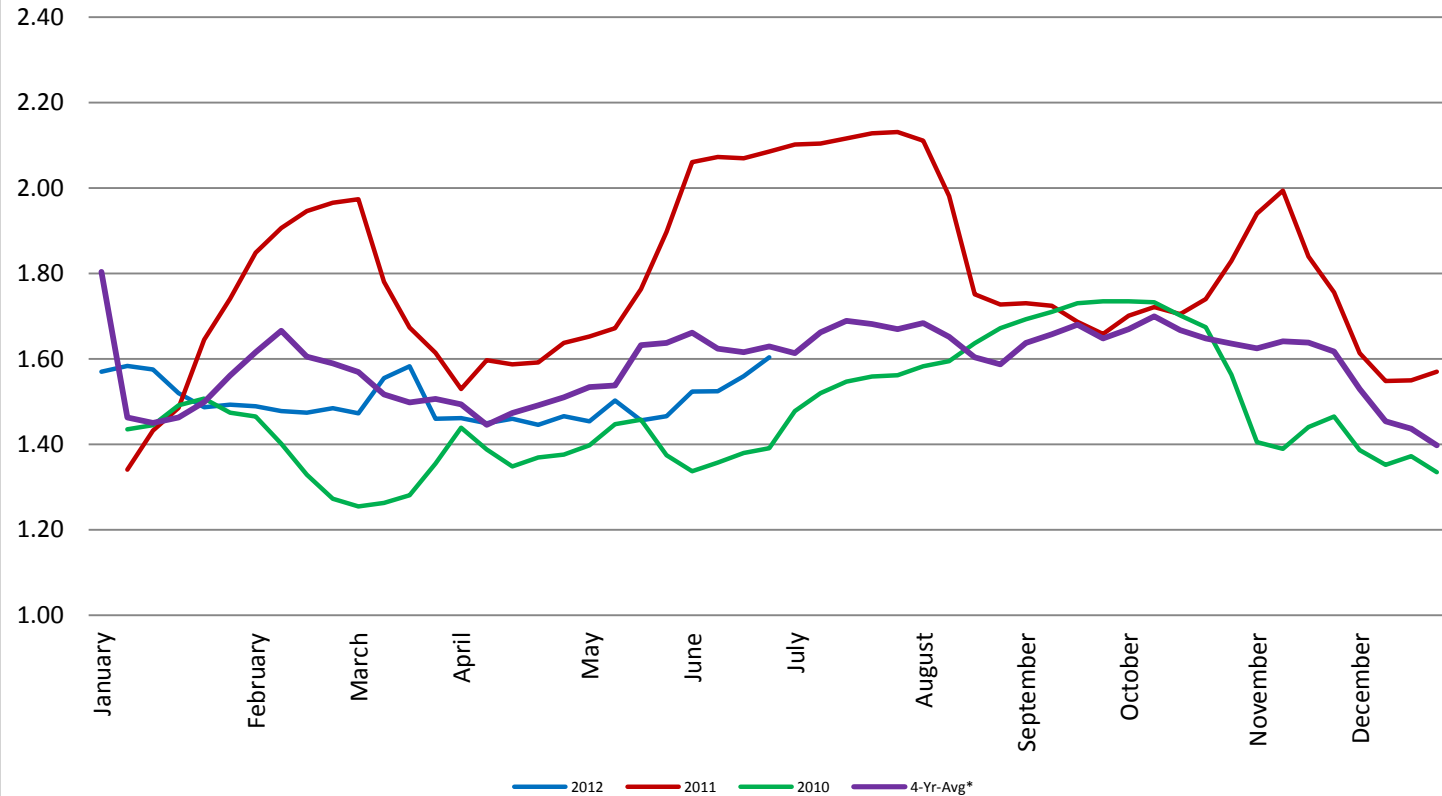


Coffee - (KC) NYBOT Average Weekly Price - Dollars per Pound



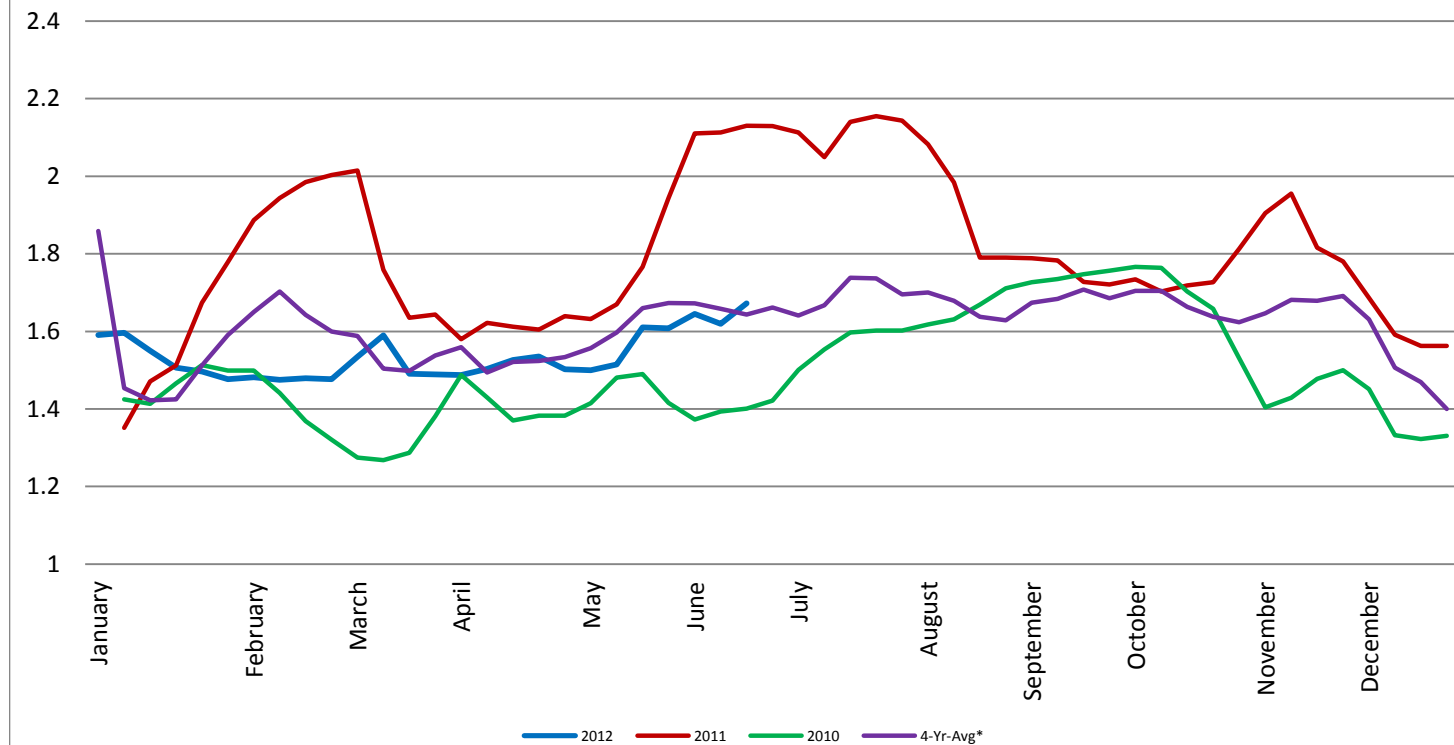
Barrel Cheddar - CME Average Weekly Price / Pound

Barrel Cheddar - CME Average Weekly Dollars per Pound

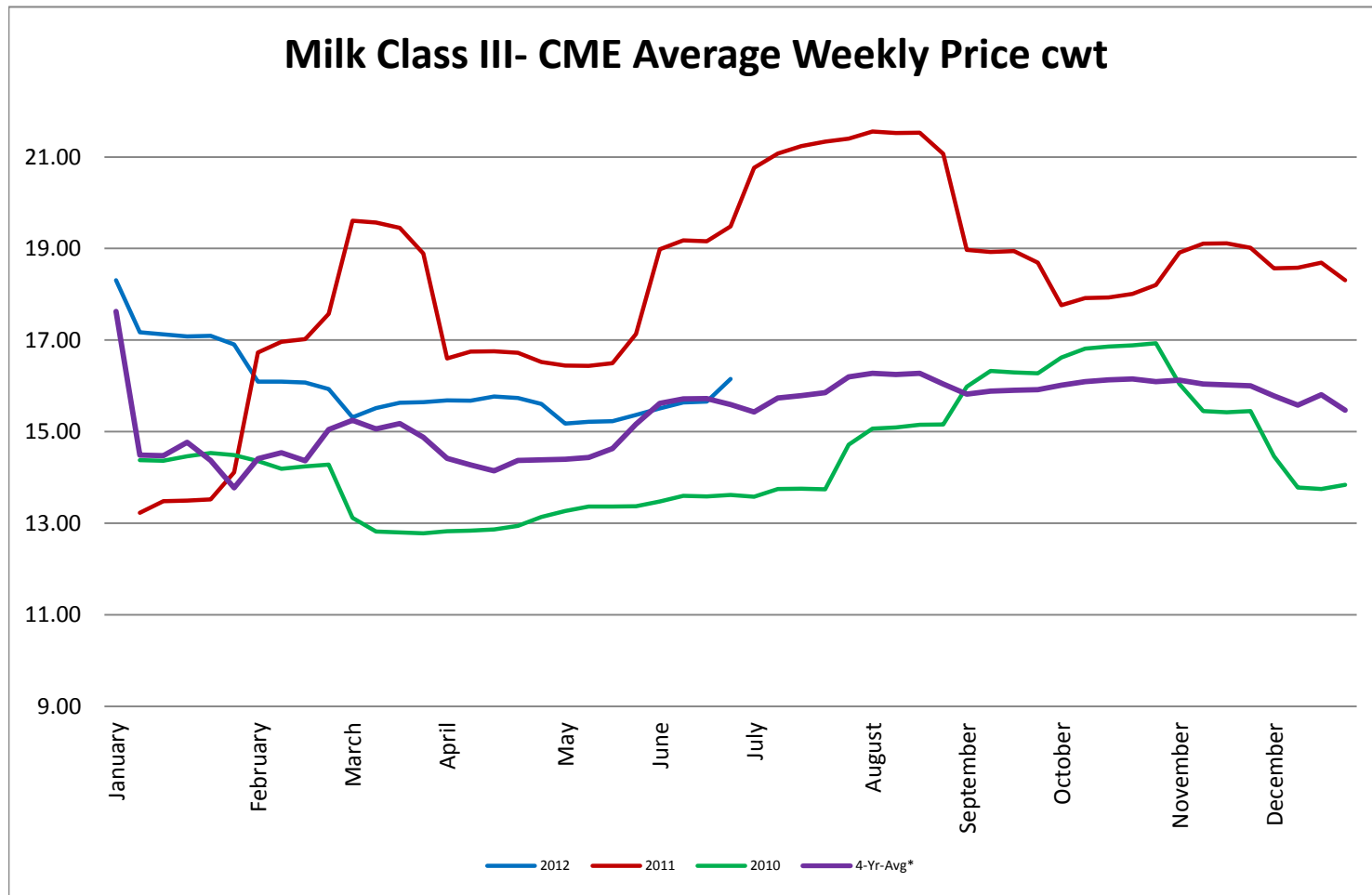


40 LB Block Cheddar - CME Average Weekly Price / Pound

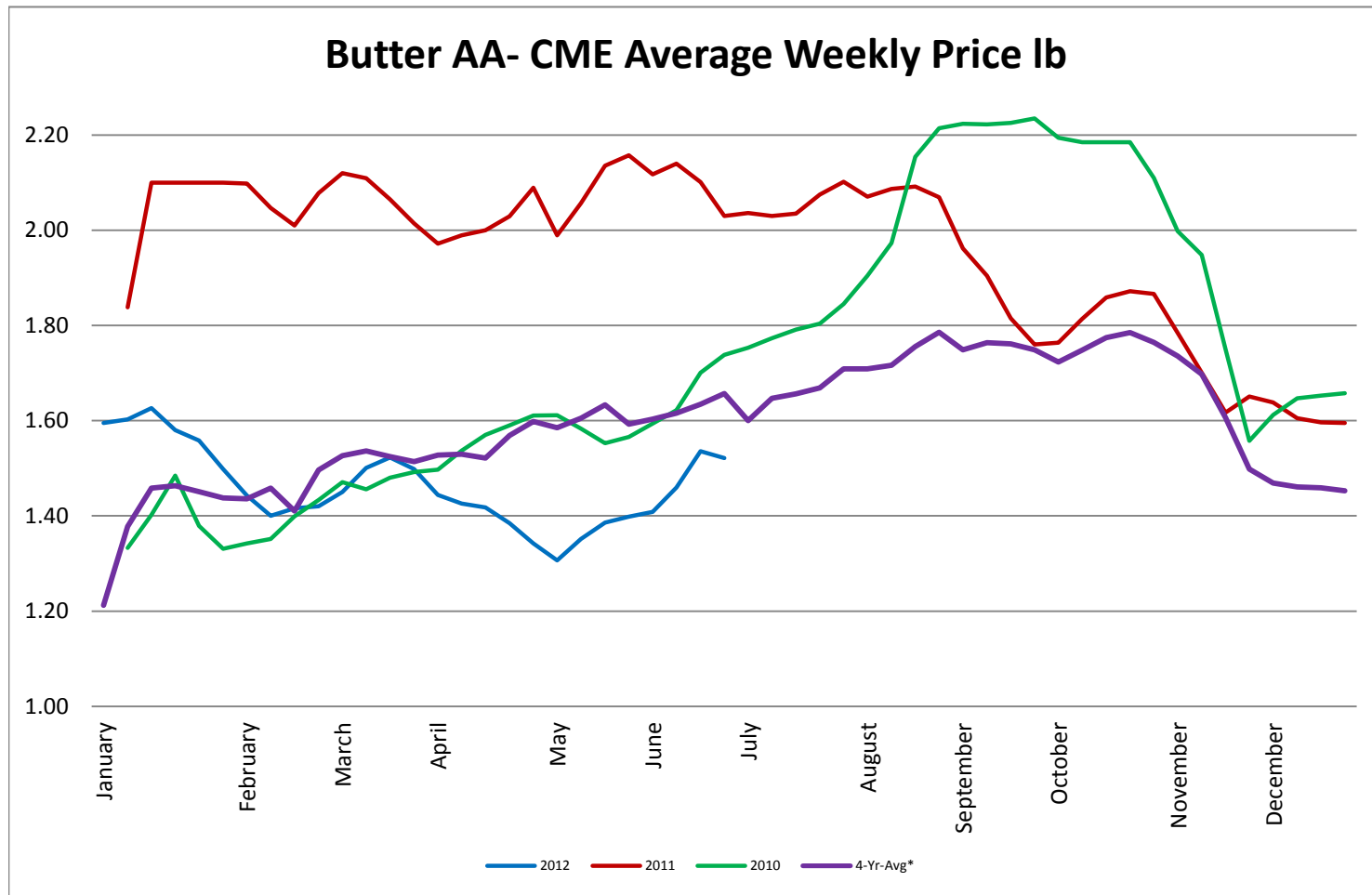
Block Cheddar 40 #- CME Average Weekly Dollars per Pound



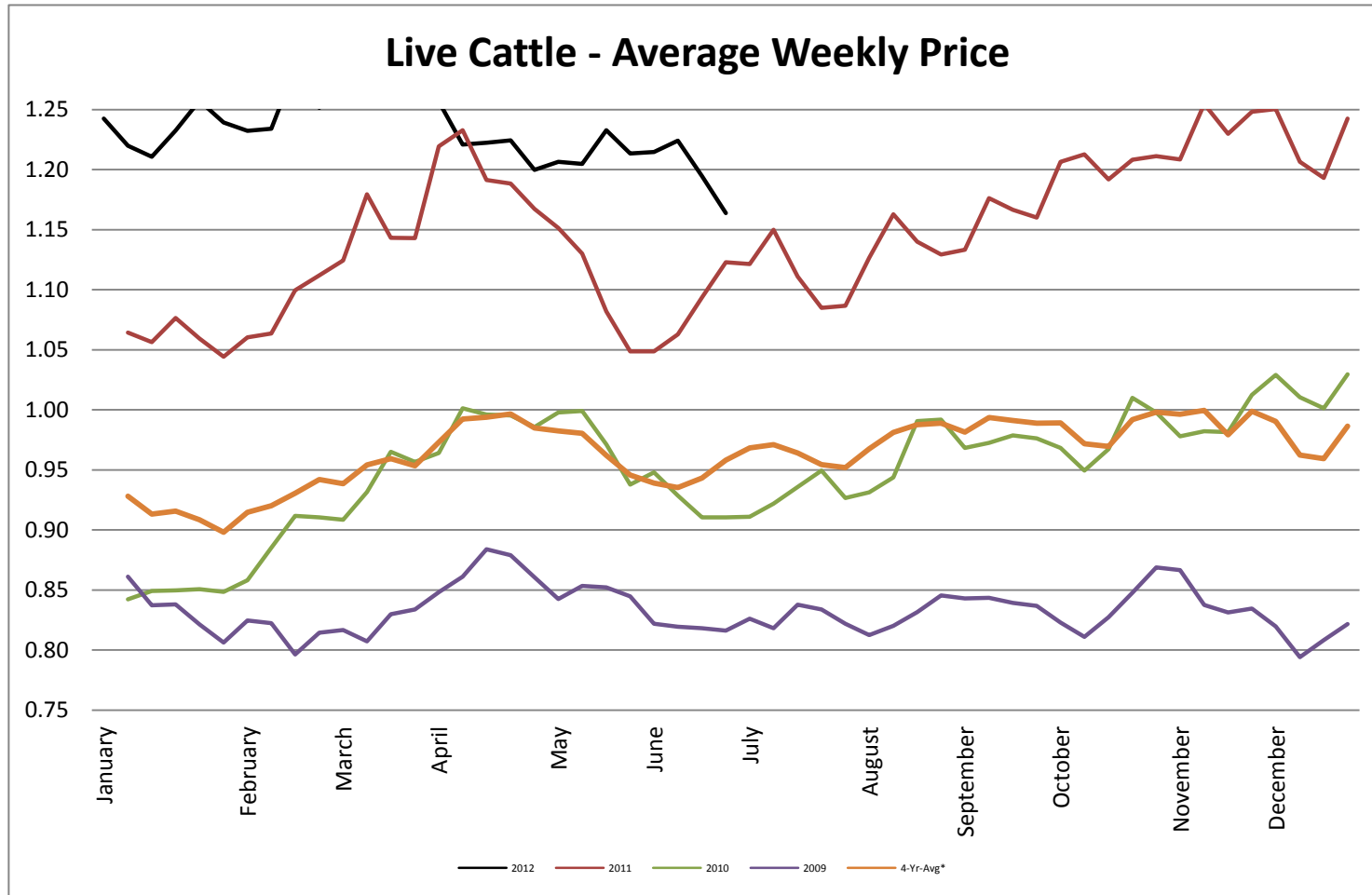
Milk Class III - CME Average Weekly Price CWT



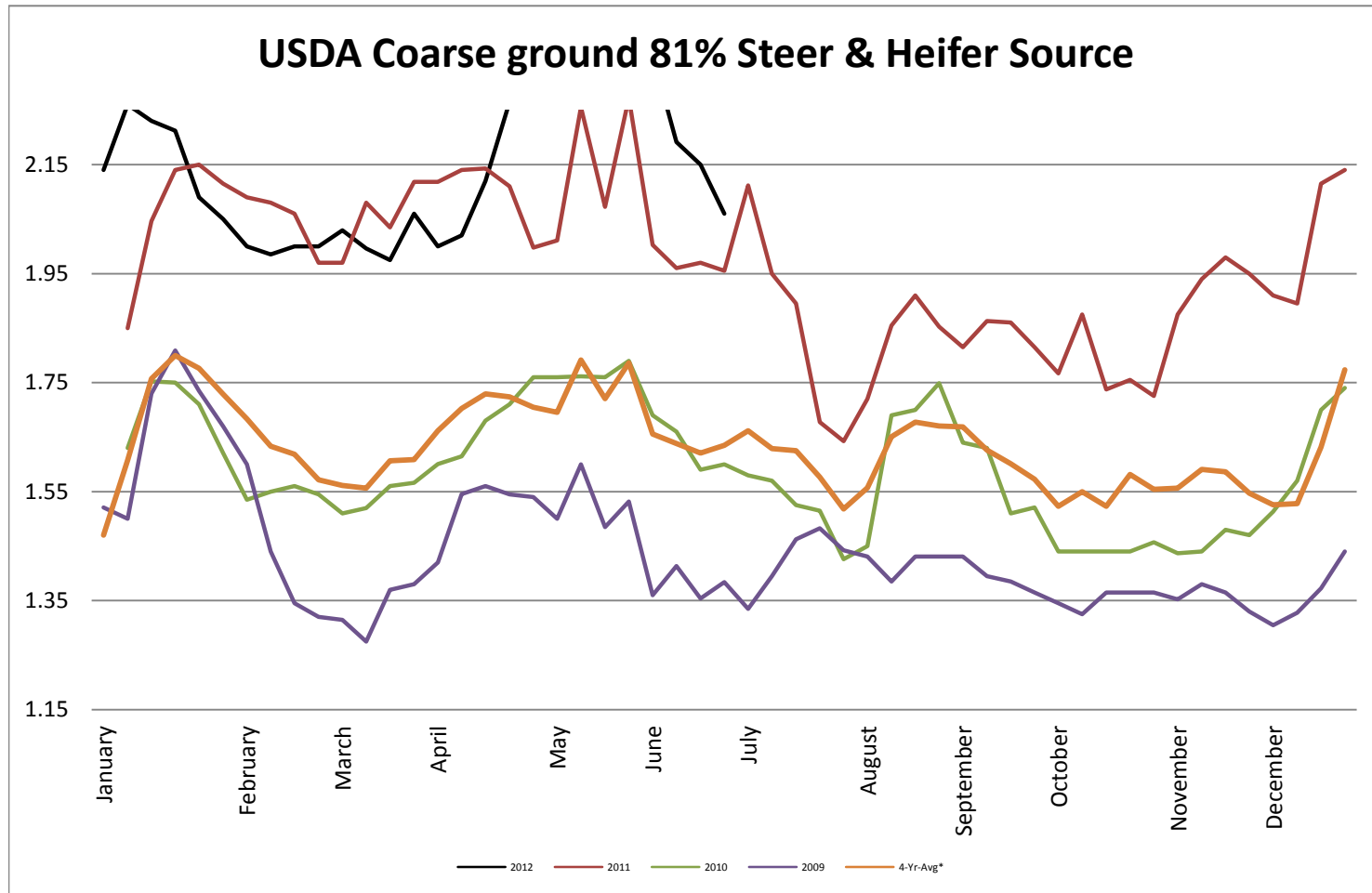
Butter AA - CME Average Weekly Price lb



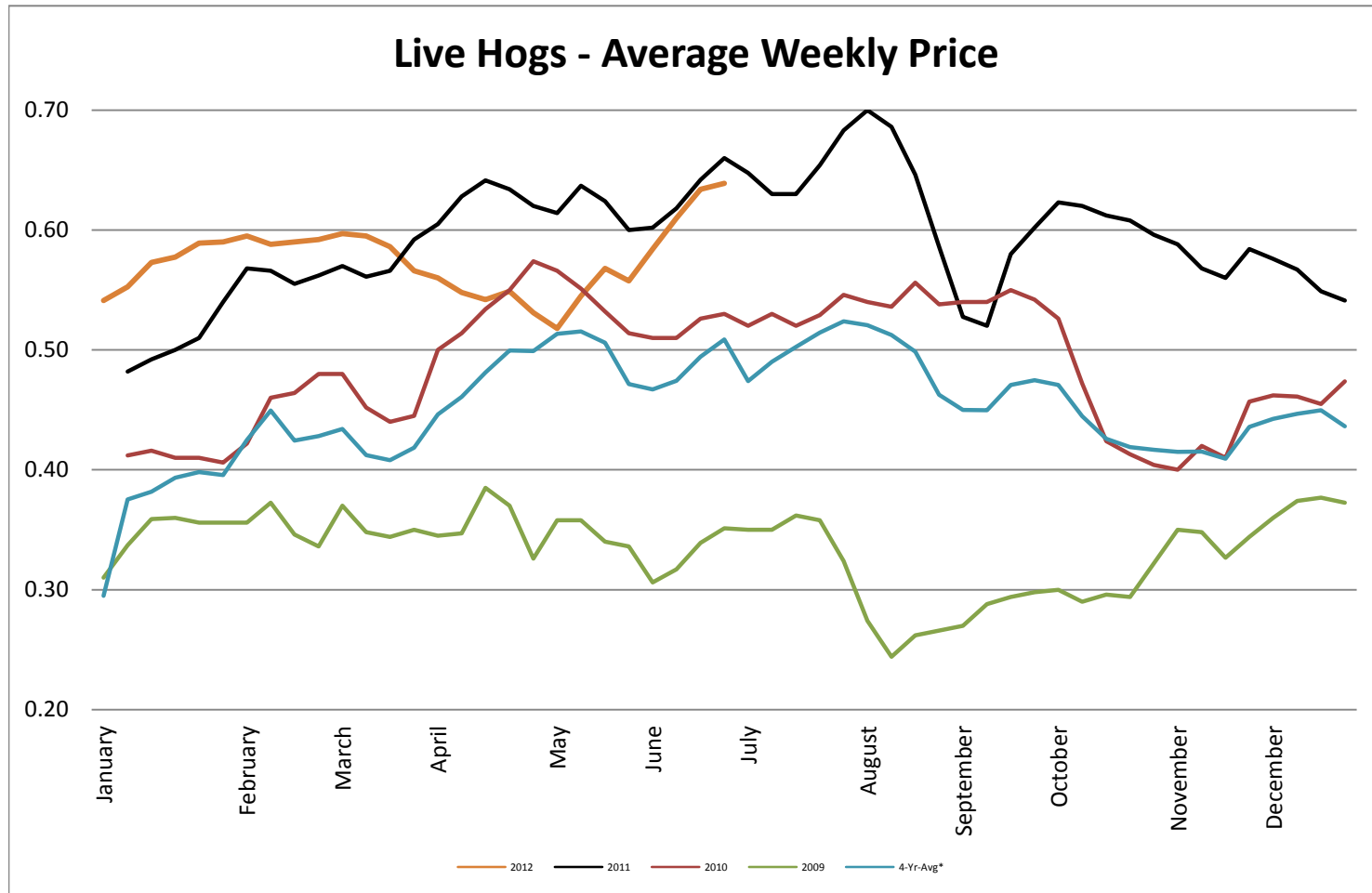
Live Cattle - Average Weekly Price USDA - 6 State Average



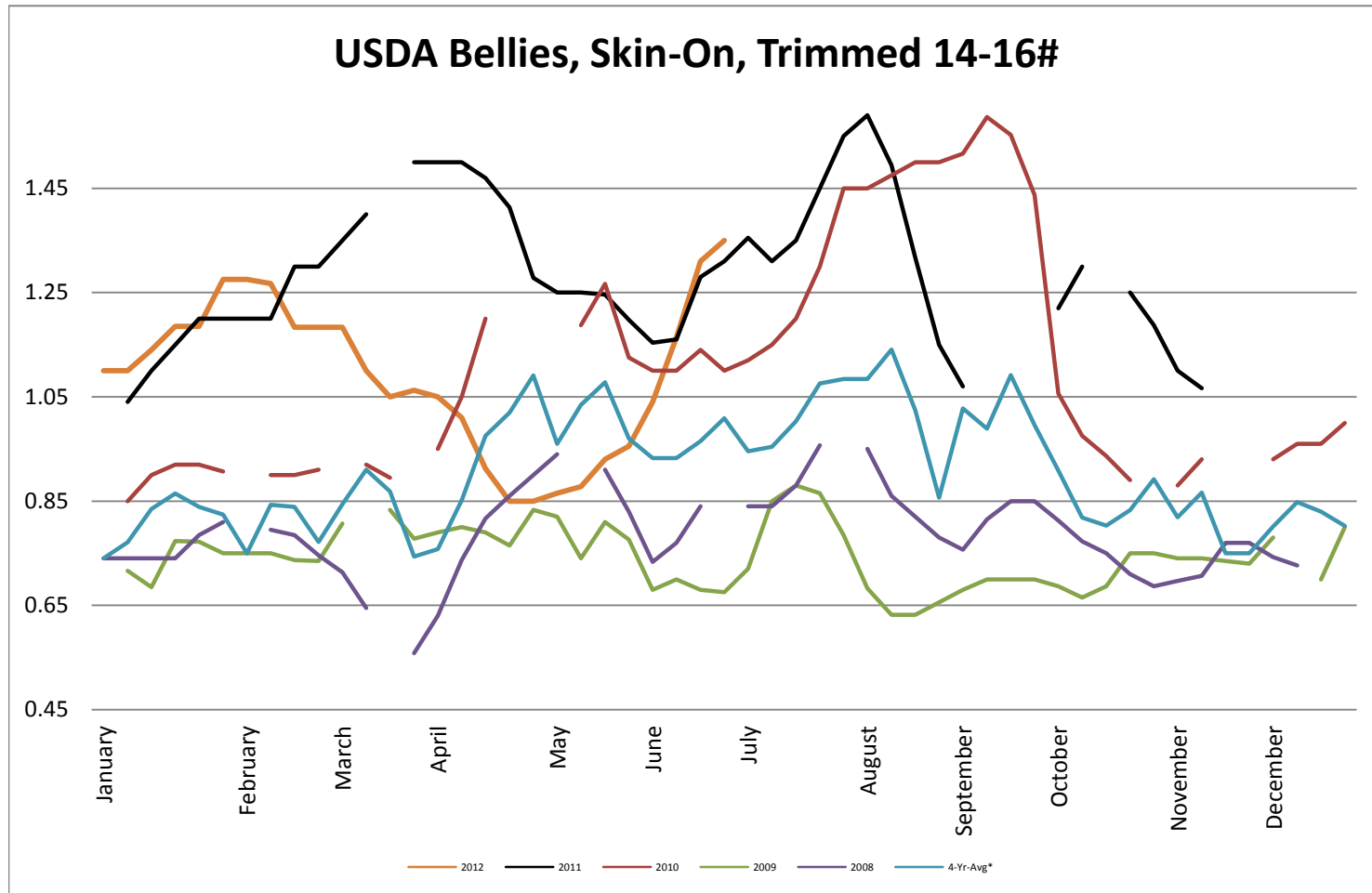
USDA Coarse ground 81% Steer & Heifer Source



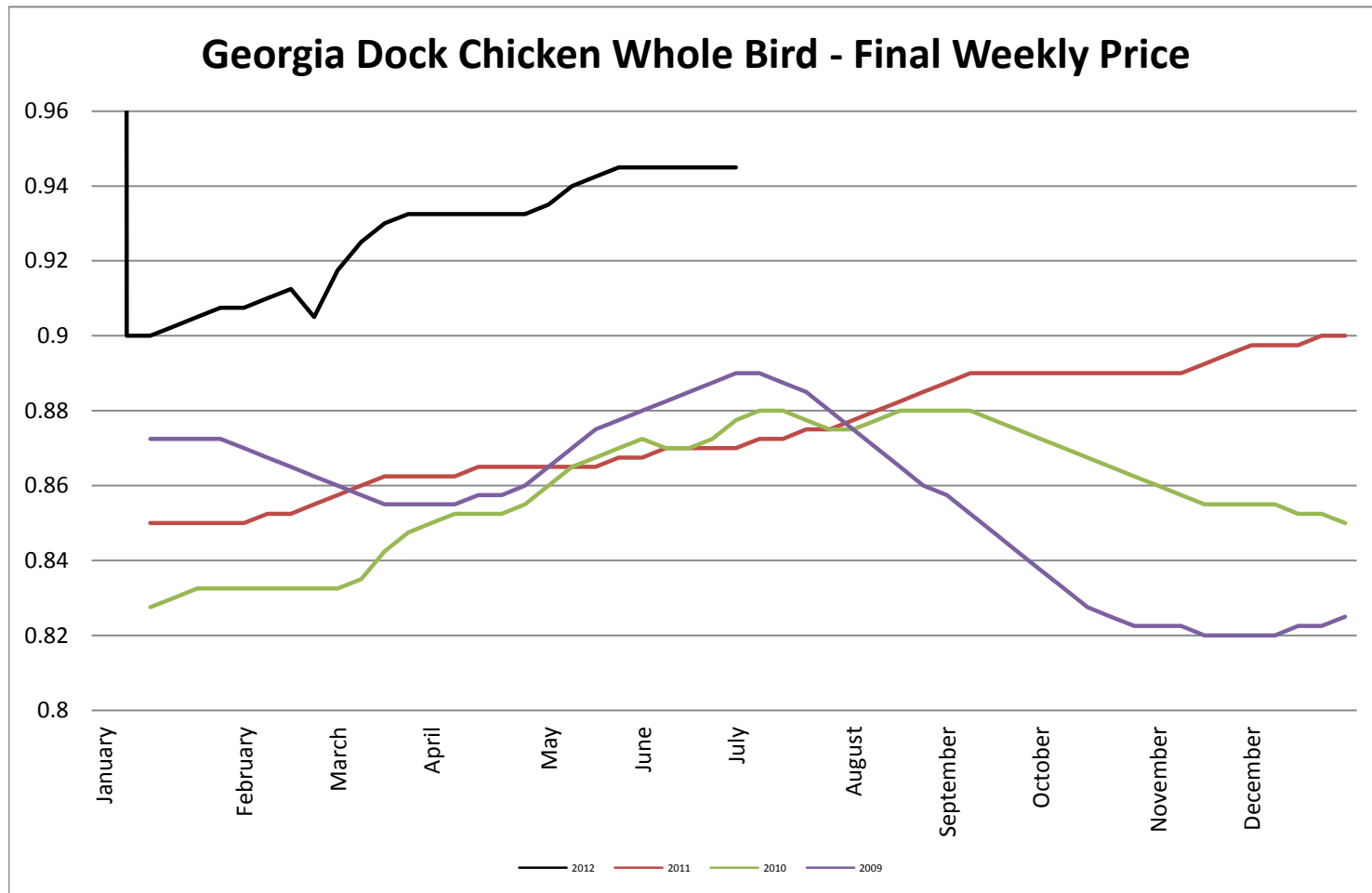
USDA Live Hogs - Average Weekly Price



USDA Bellies, Skin-On, Trimmed 14-16#

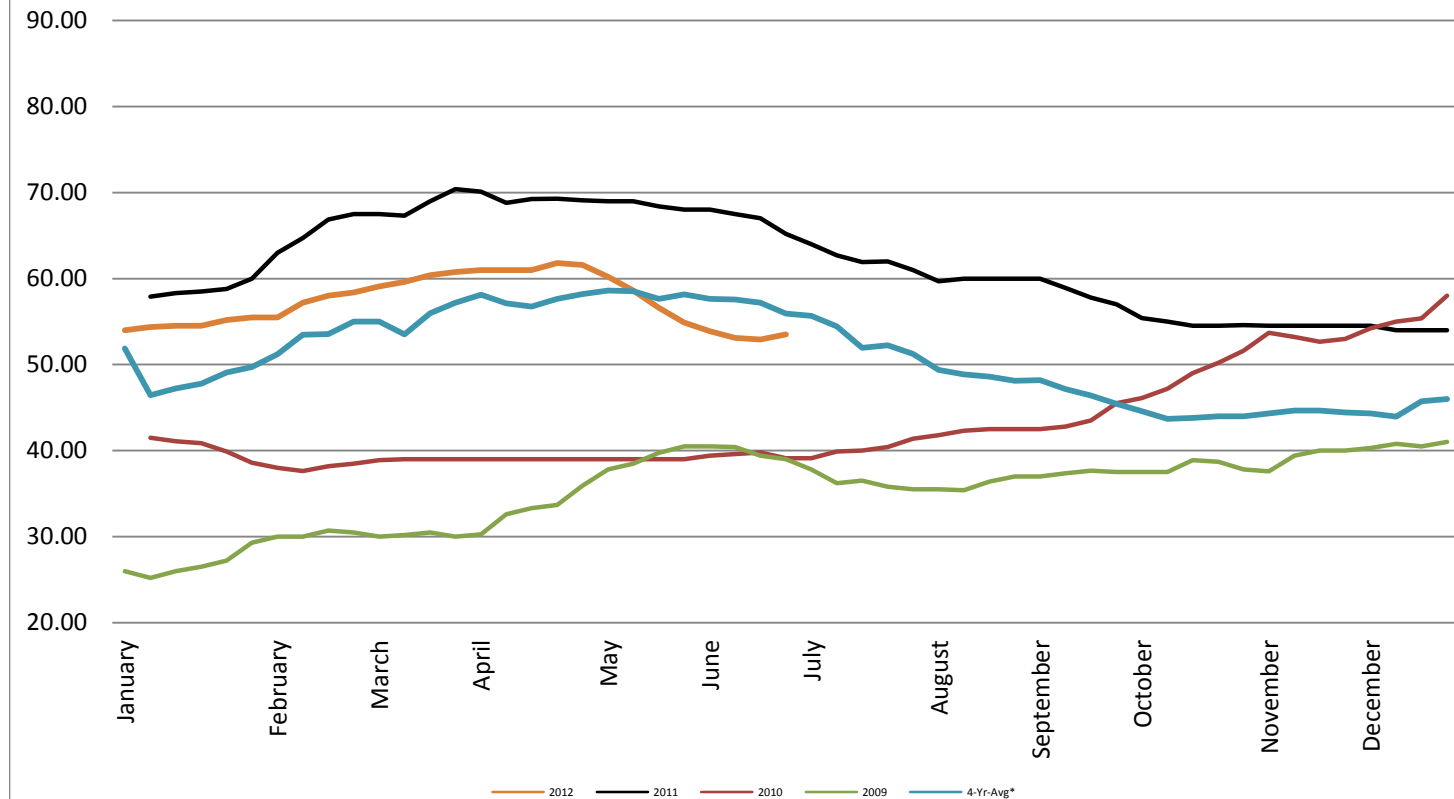


Georgia Dock Chicken - Final Weekly Price

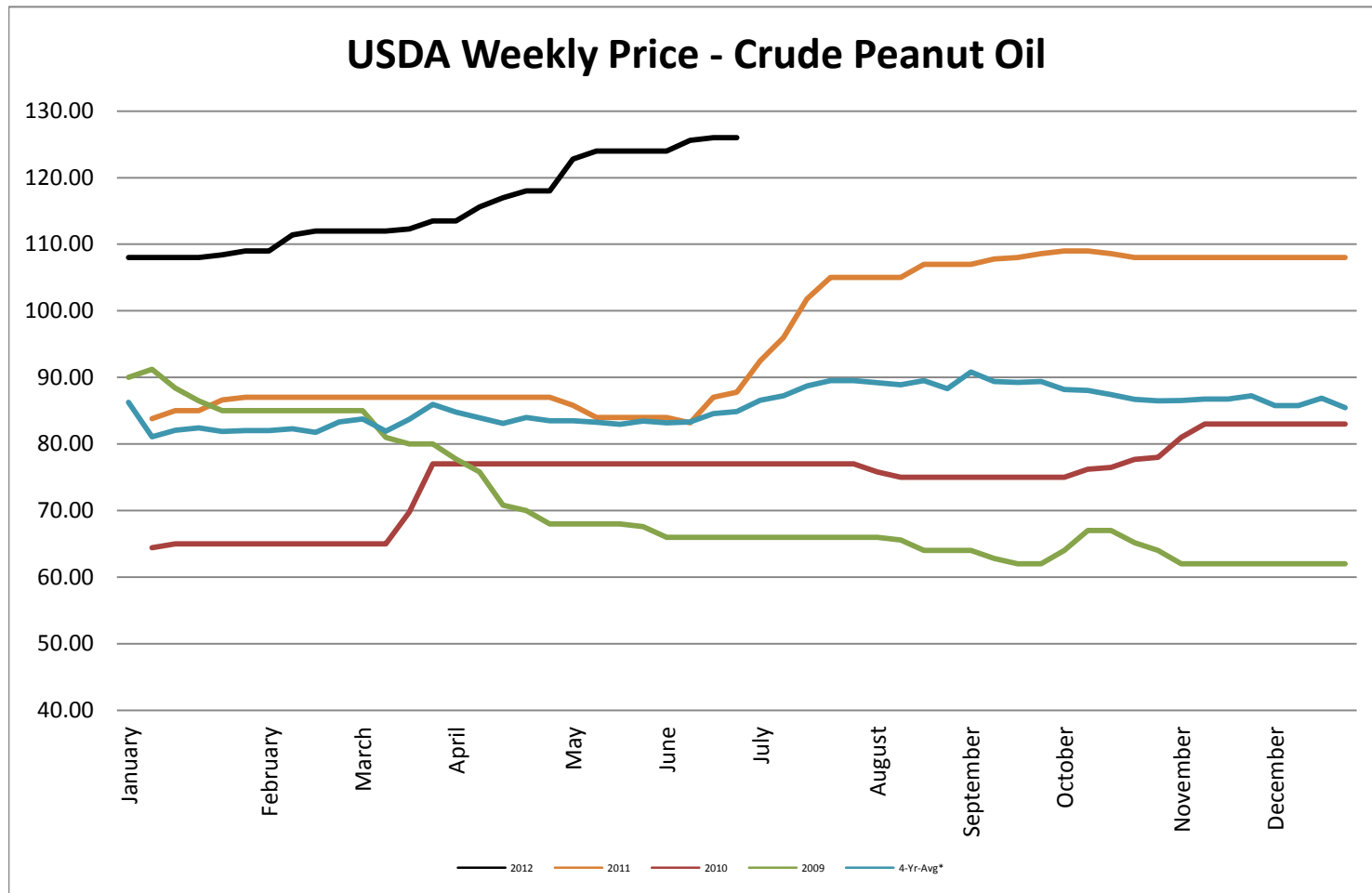


USDA Weekly Price - Crude Corn Oil

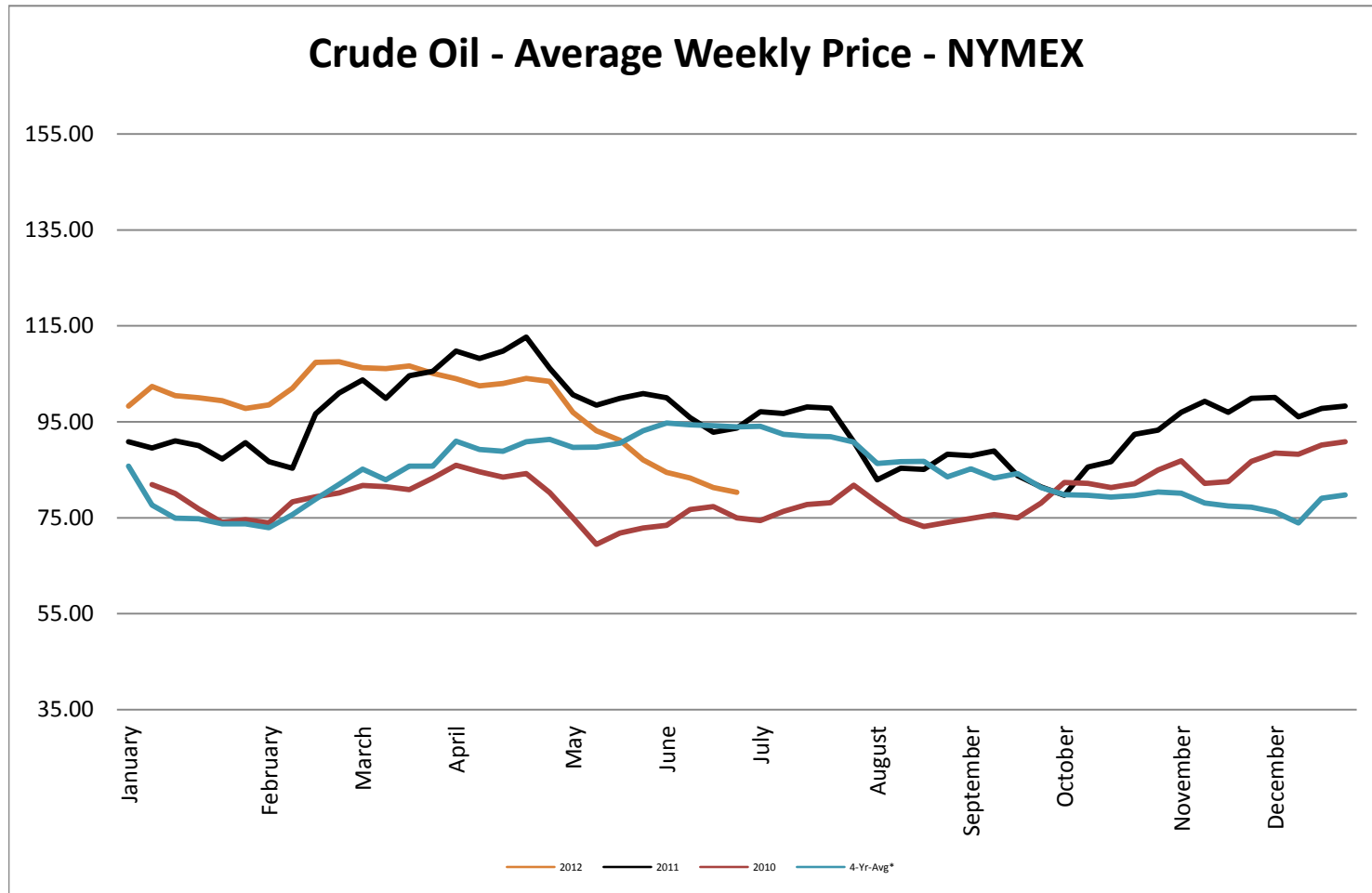
USDA Illinois Weekly Price - Crude Corn Oil

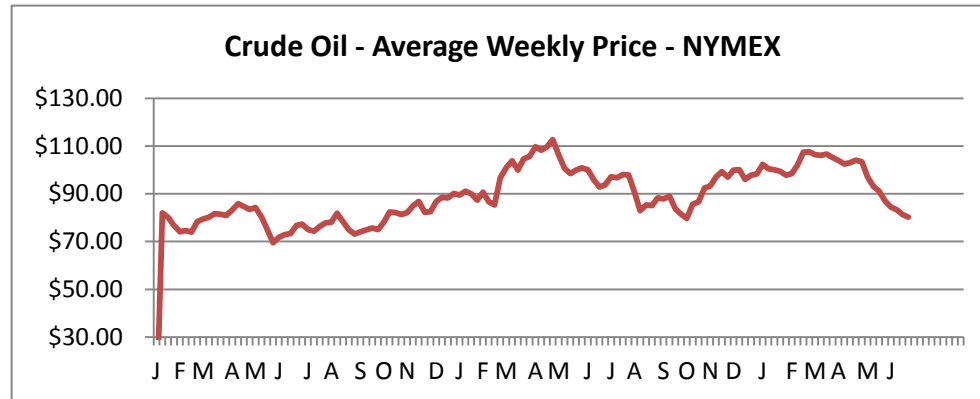


USDA Weekly Price - Crude Peanut Oil

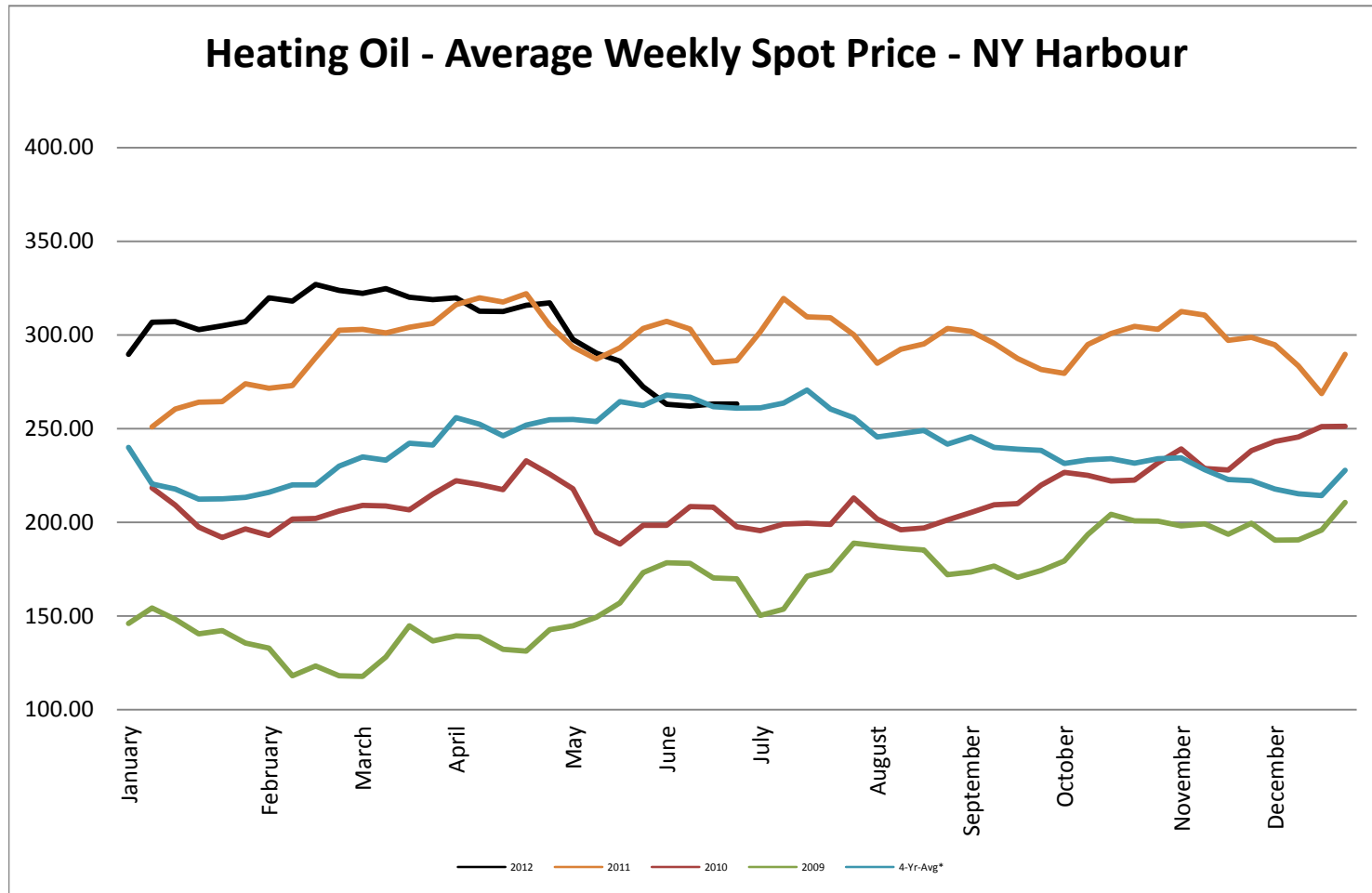


Crude Oil - Average Weekly Price - NYMEX

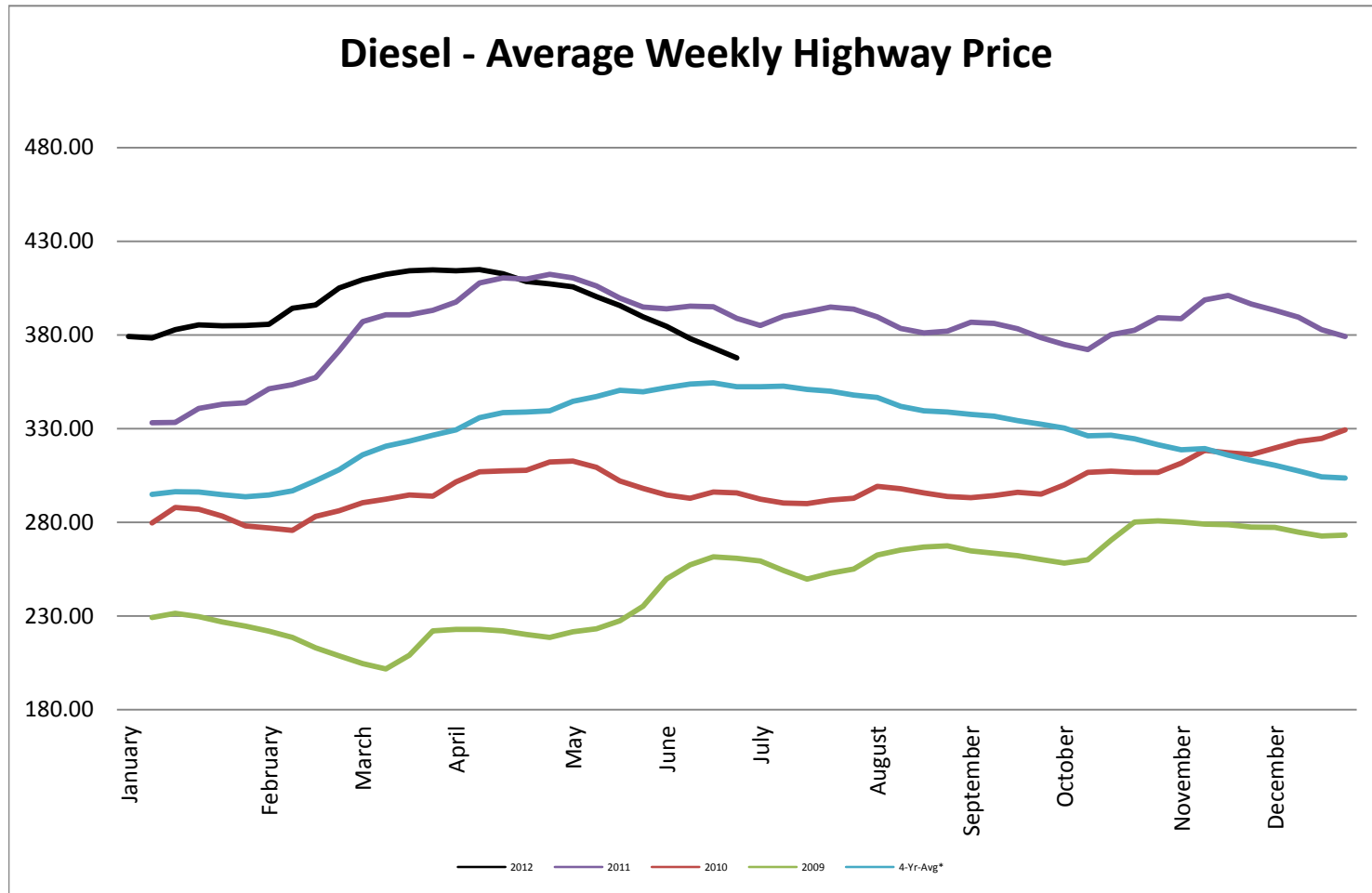




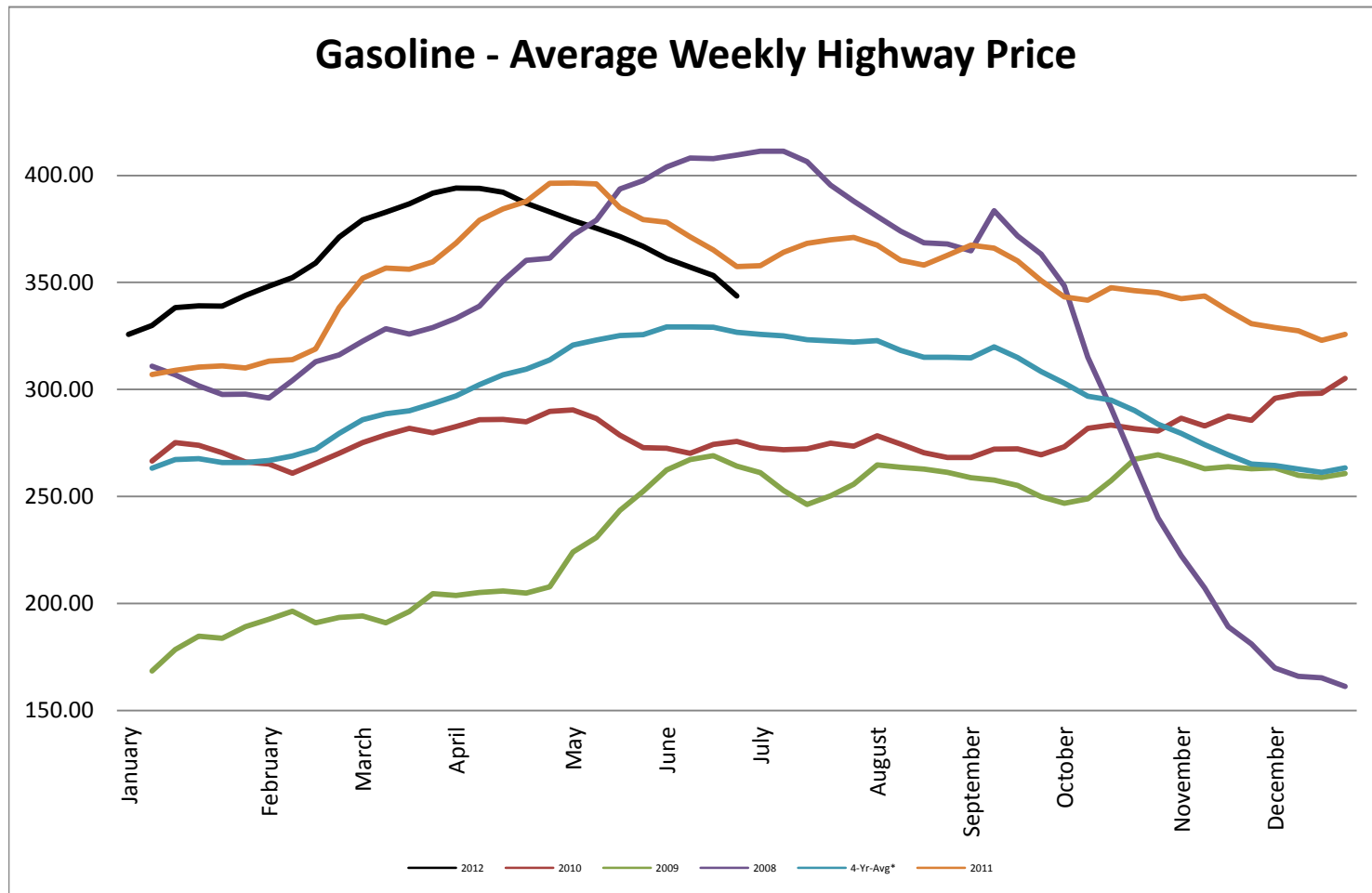
Heating Oil - Average Weekly Spot Price - NY Harbour



Diesel - Average Weekly Highway Price

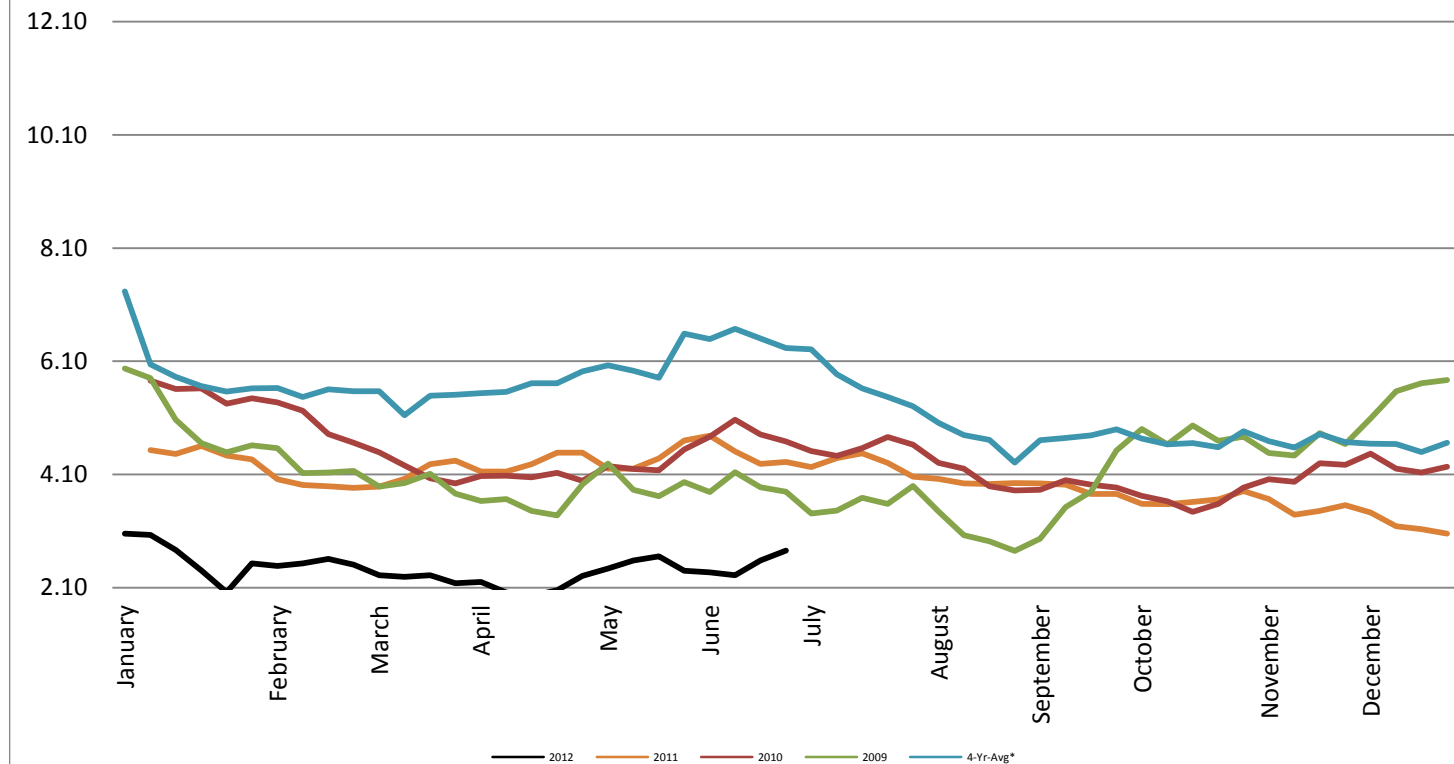


Gasoline Unleaded - Average Weekly Highway Price

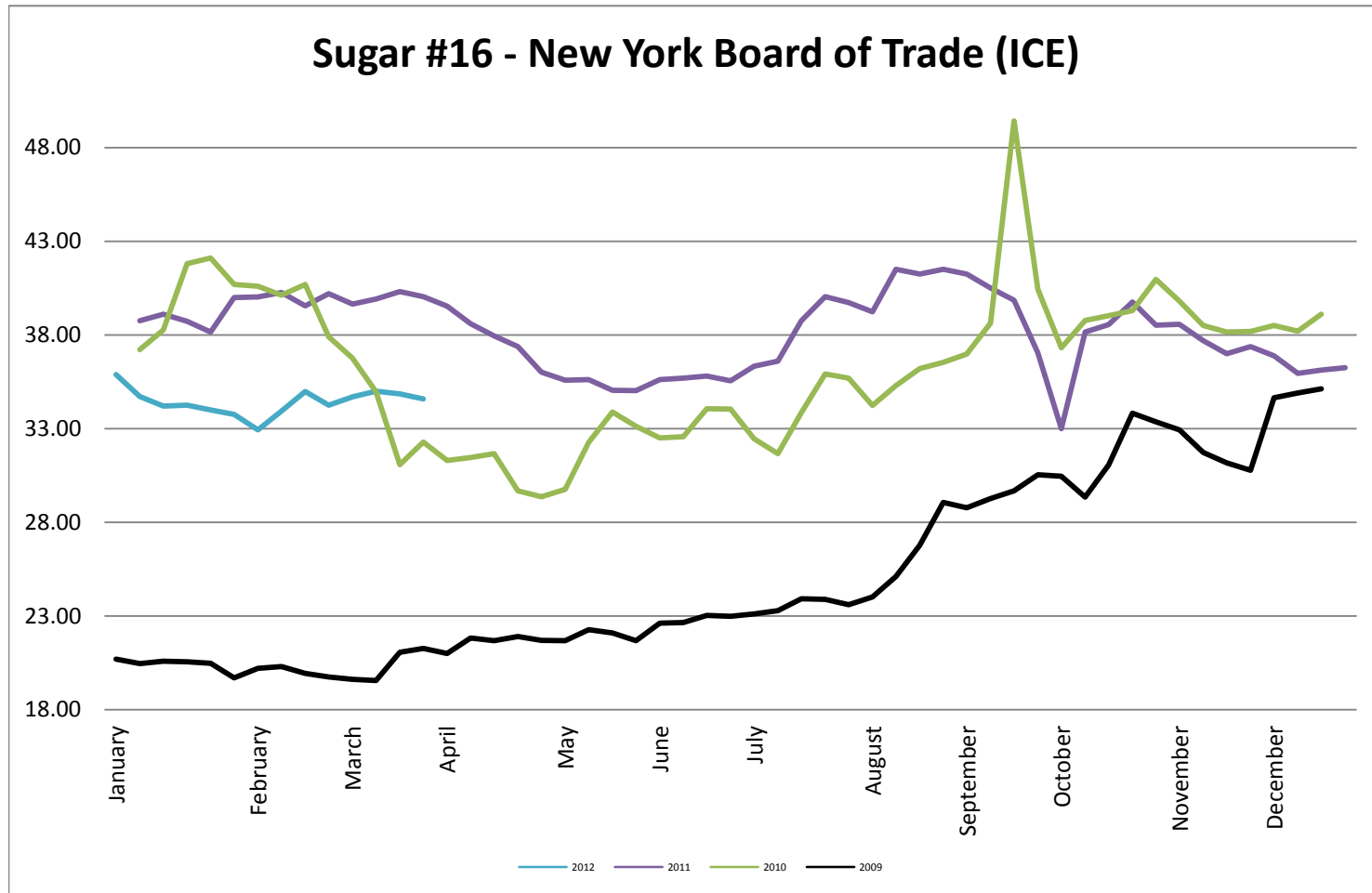


Natural Gas Futures - New York Mercantile Exchange

Natural Gas Futures - New York Mercantile Exchange



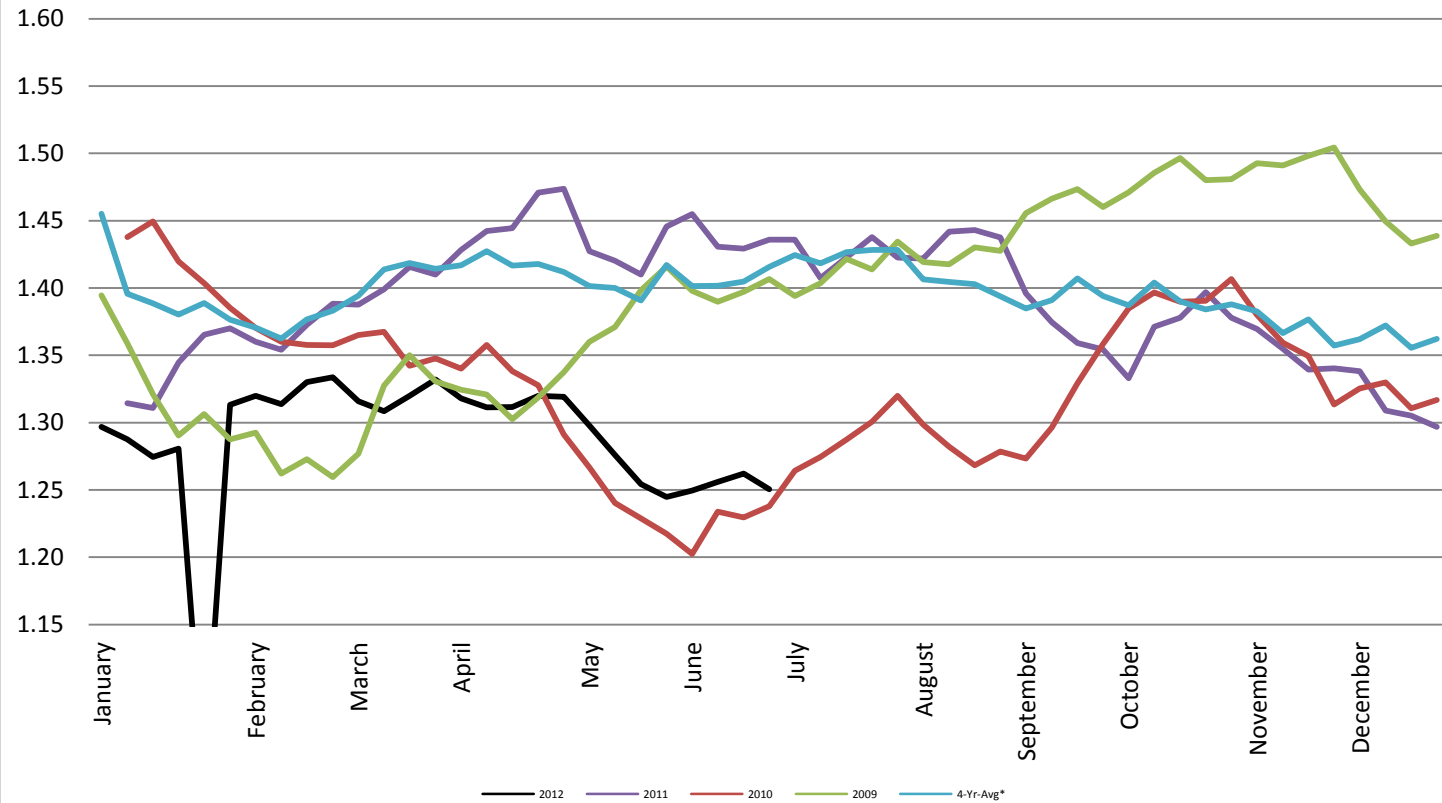
Sugar #16 - New York Board of Trade (ICE)



Foreign Exchange Rate - Euro, EMU Members

Foreign Exchange Rate - Euro, EMU Members

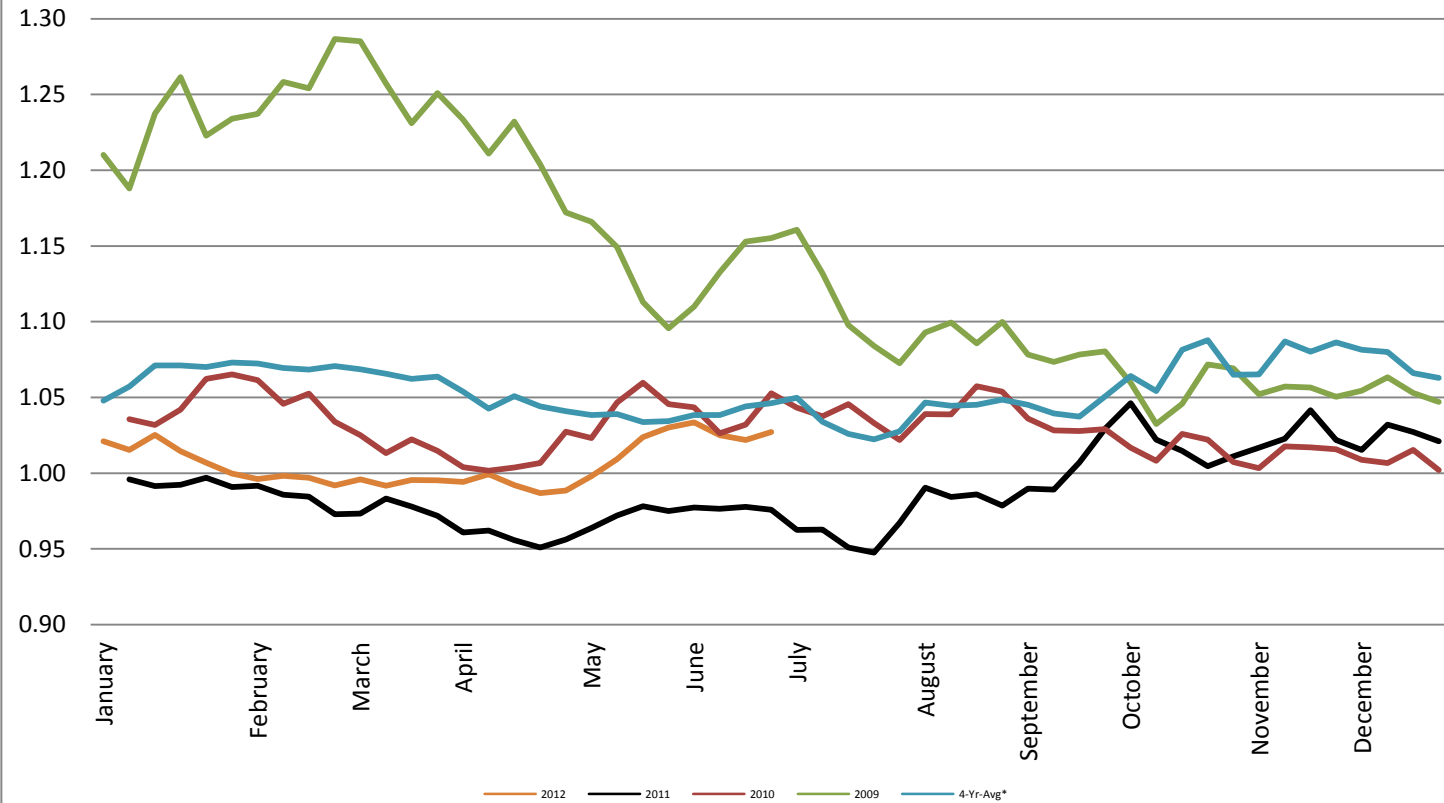
Federal Reserve Bank of New York



Foreign Exchange Rate - Canadian Dollar

Foreign Exchange Rate - Canadian Dollar

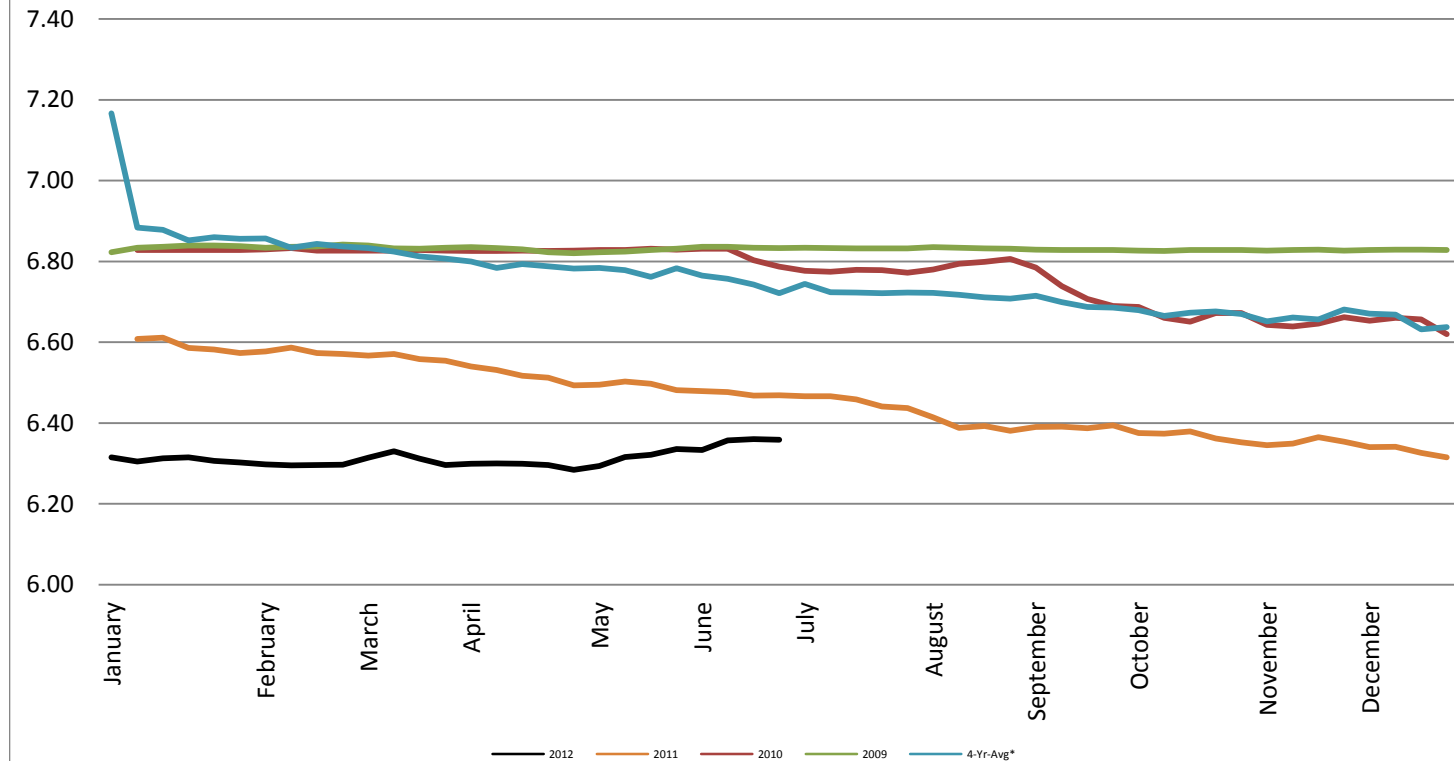
Federal Reserve Bank of New York



Foreign Exchange Rate - Chinese Yuan

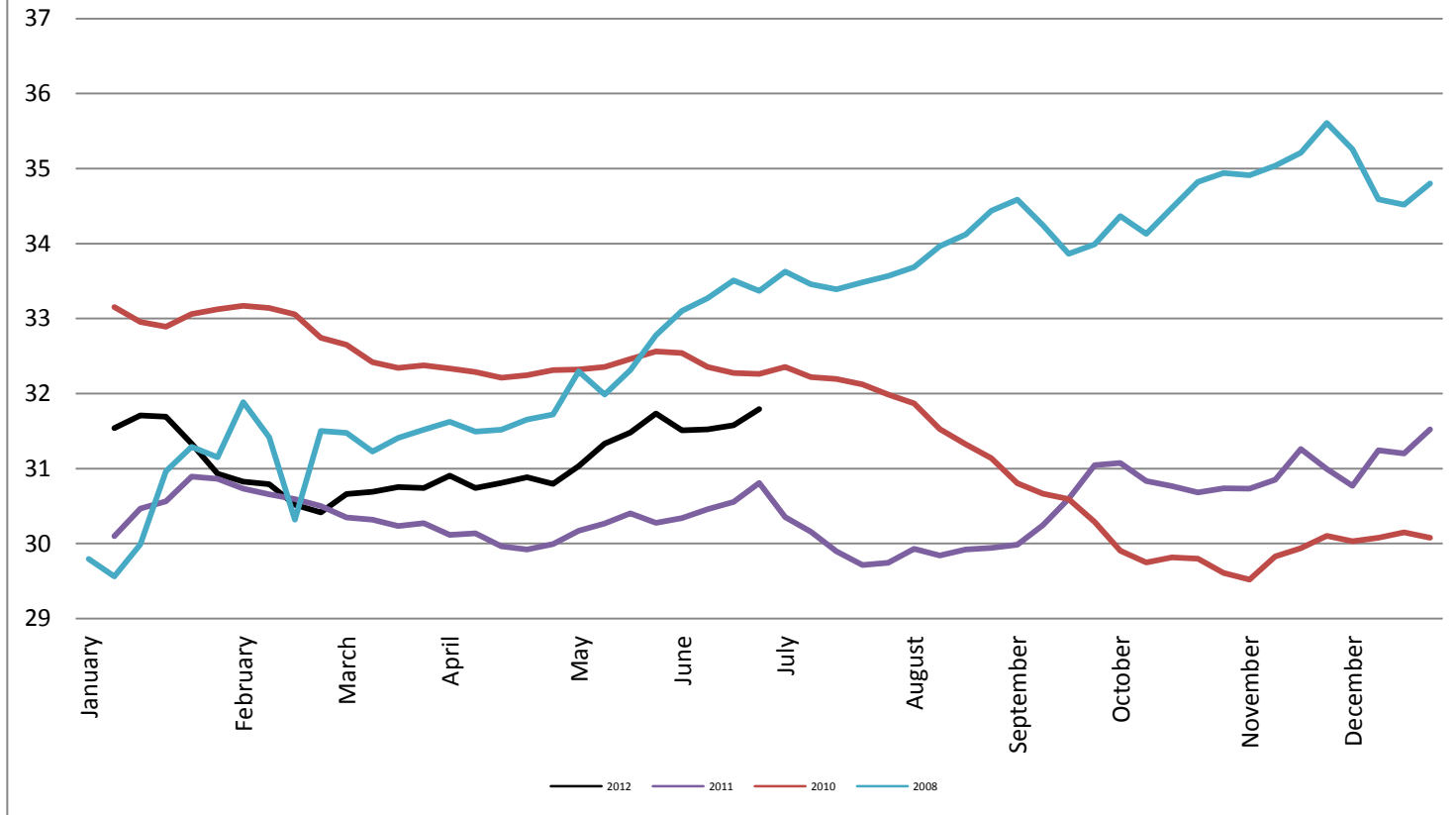
Foreign Exchange Rate - Chinese Yuan

Federal Reserve Bank of New York



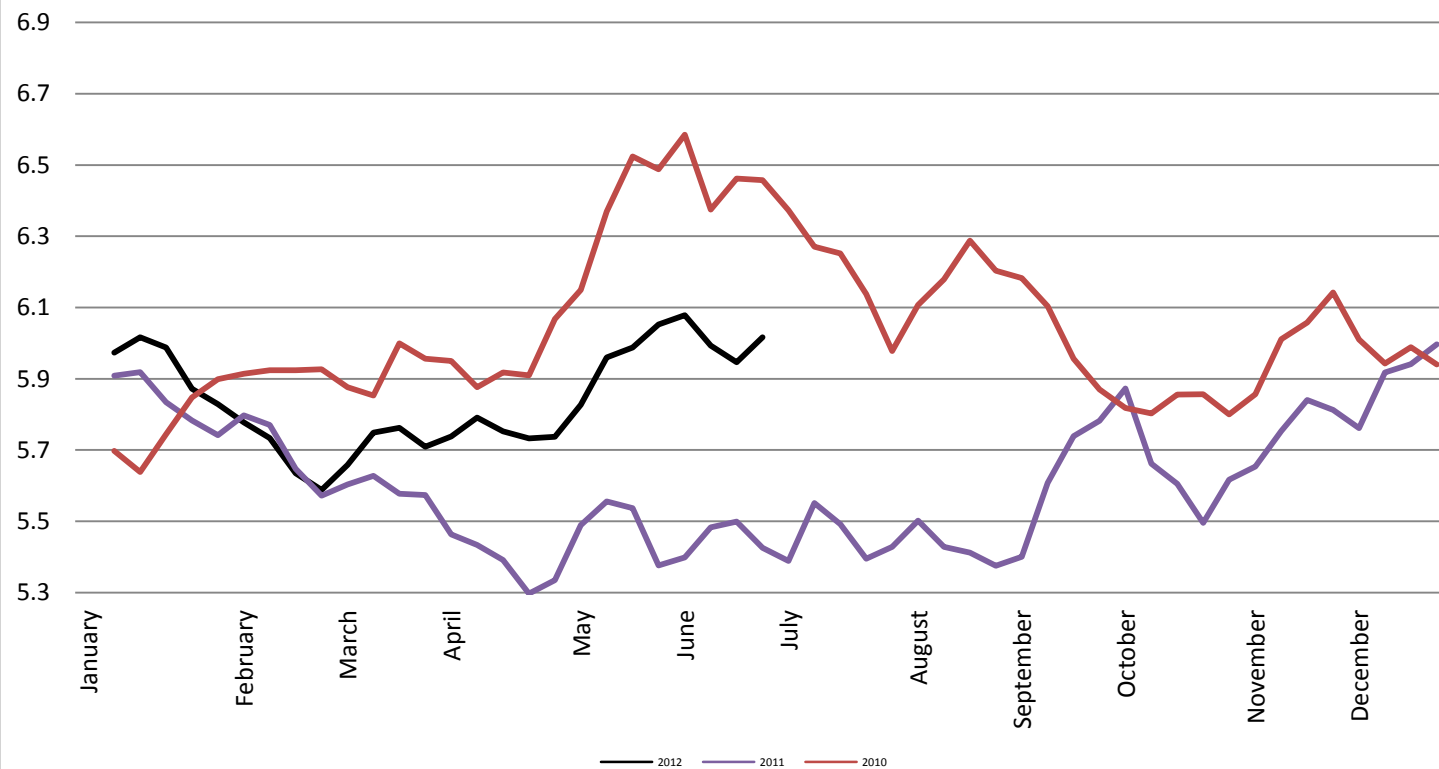
Foreign Exchange Rate

Thailand - Baht *Federal Reserve Bank of New York*



Foreign Exchange Rate

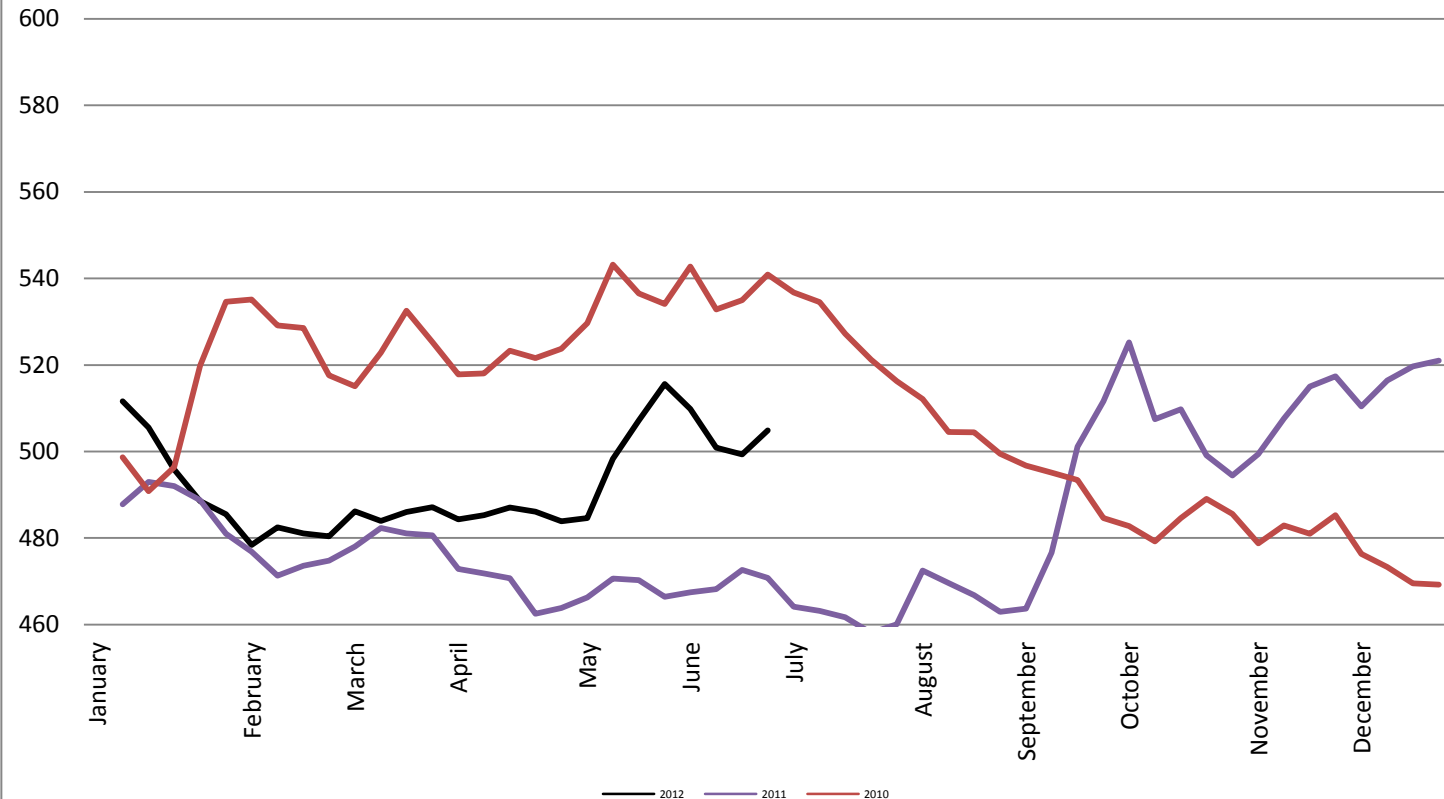
Nowegian Krone *Federal Reserve Bank of New York*



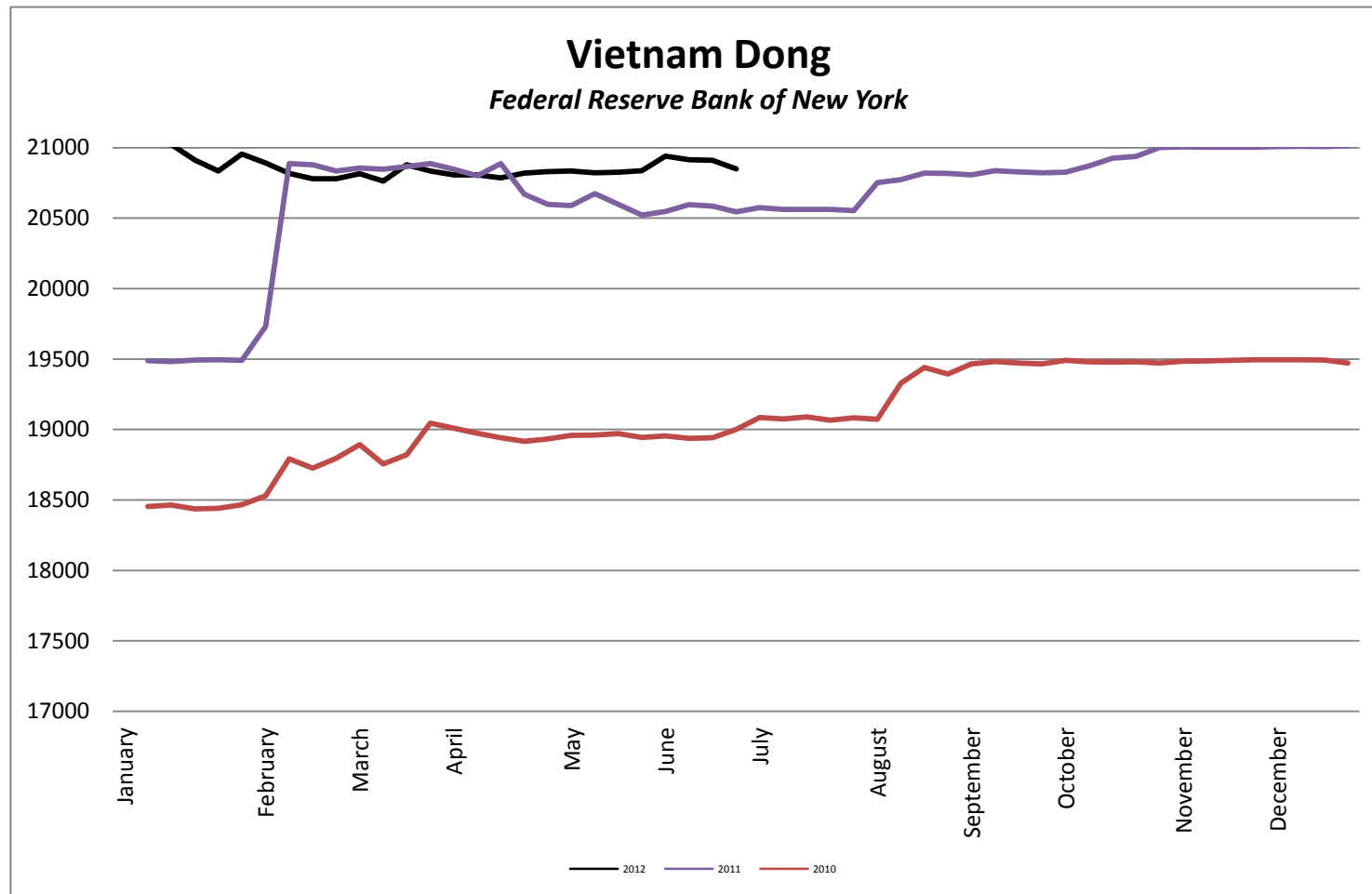
Foreign Exchange Rate

Chile Peso

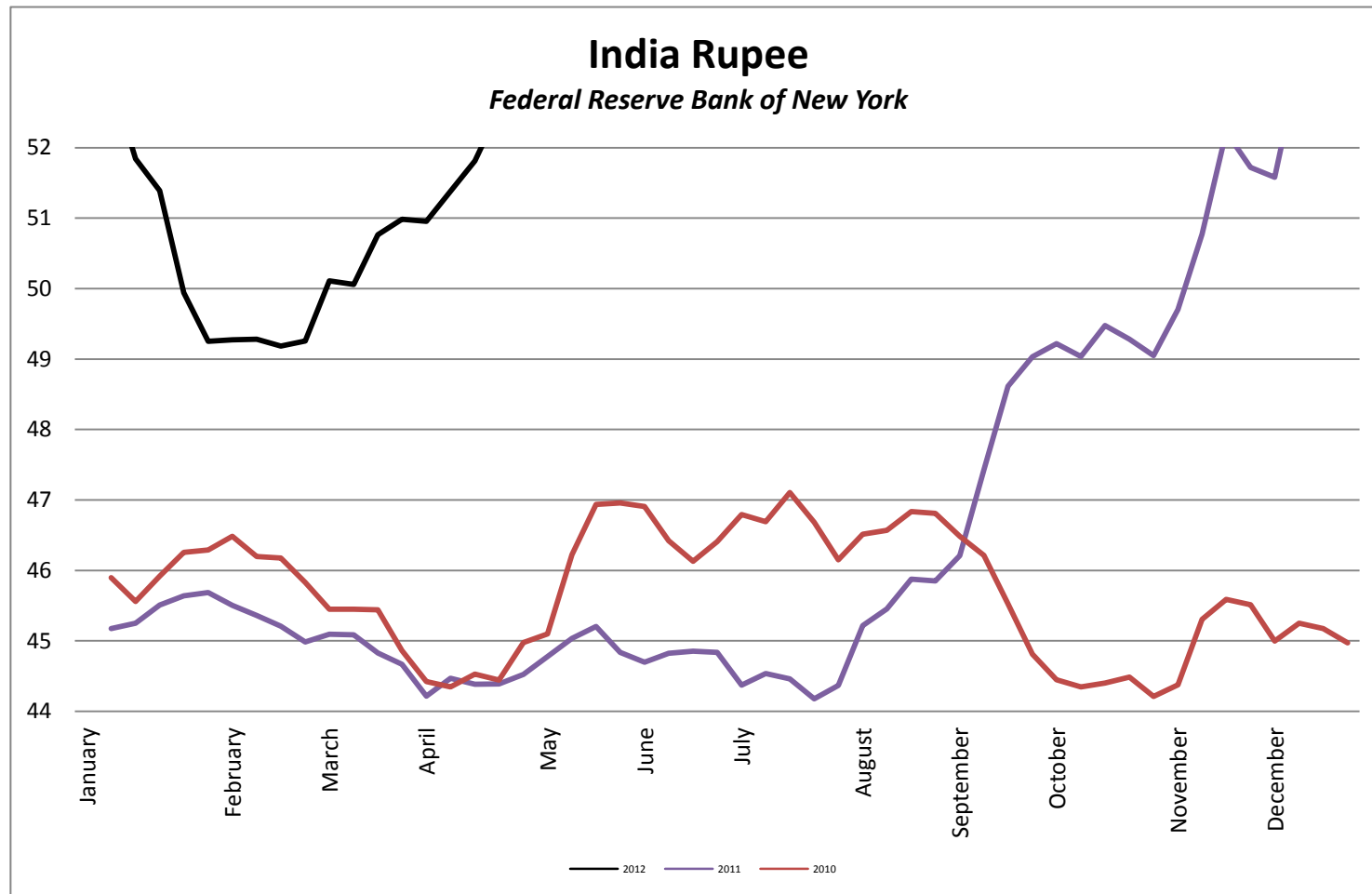
Federal Reserve Bank of New York



Foreign Exchange Rate



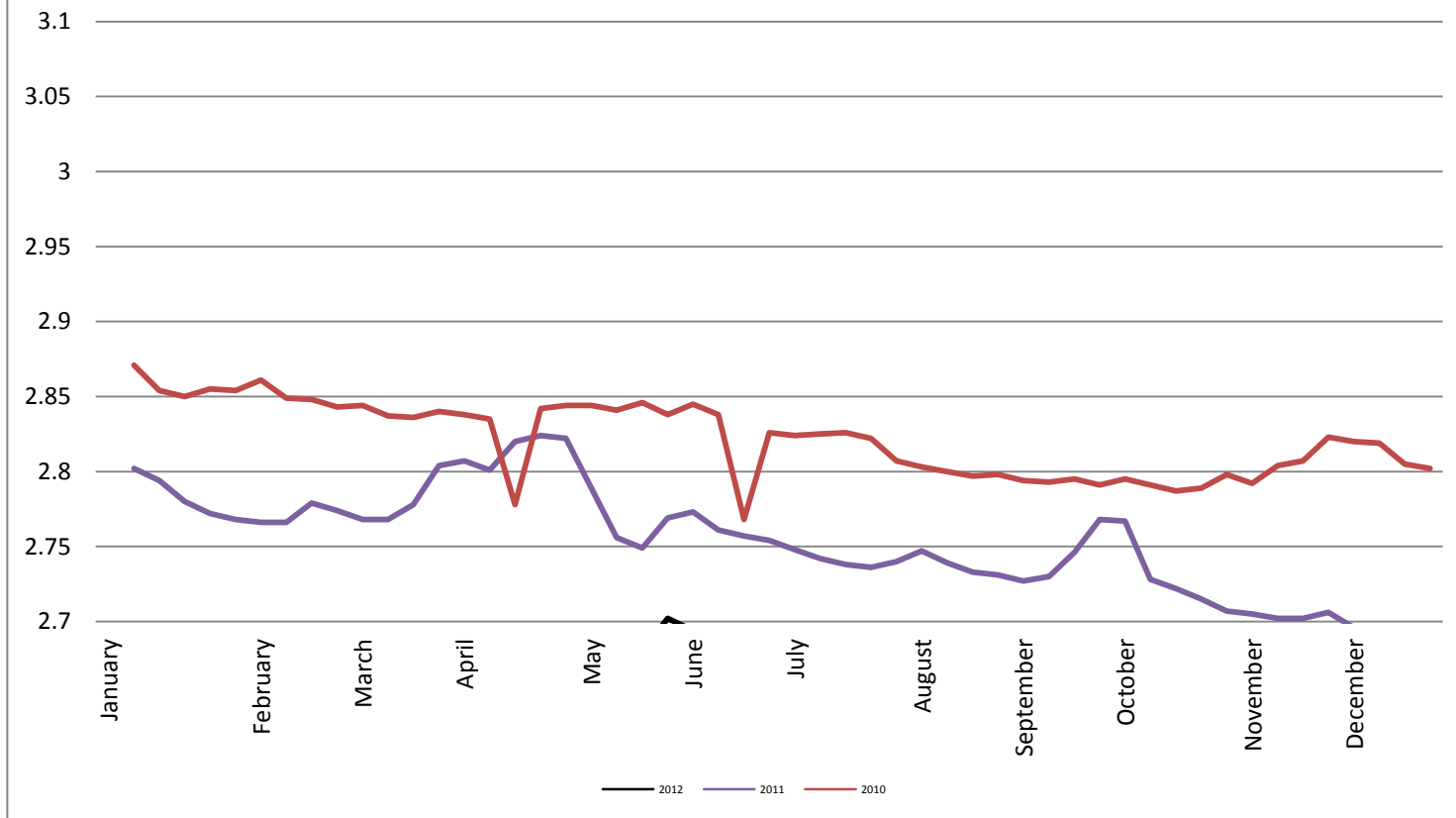
Foreign Exchange Rate



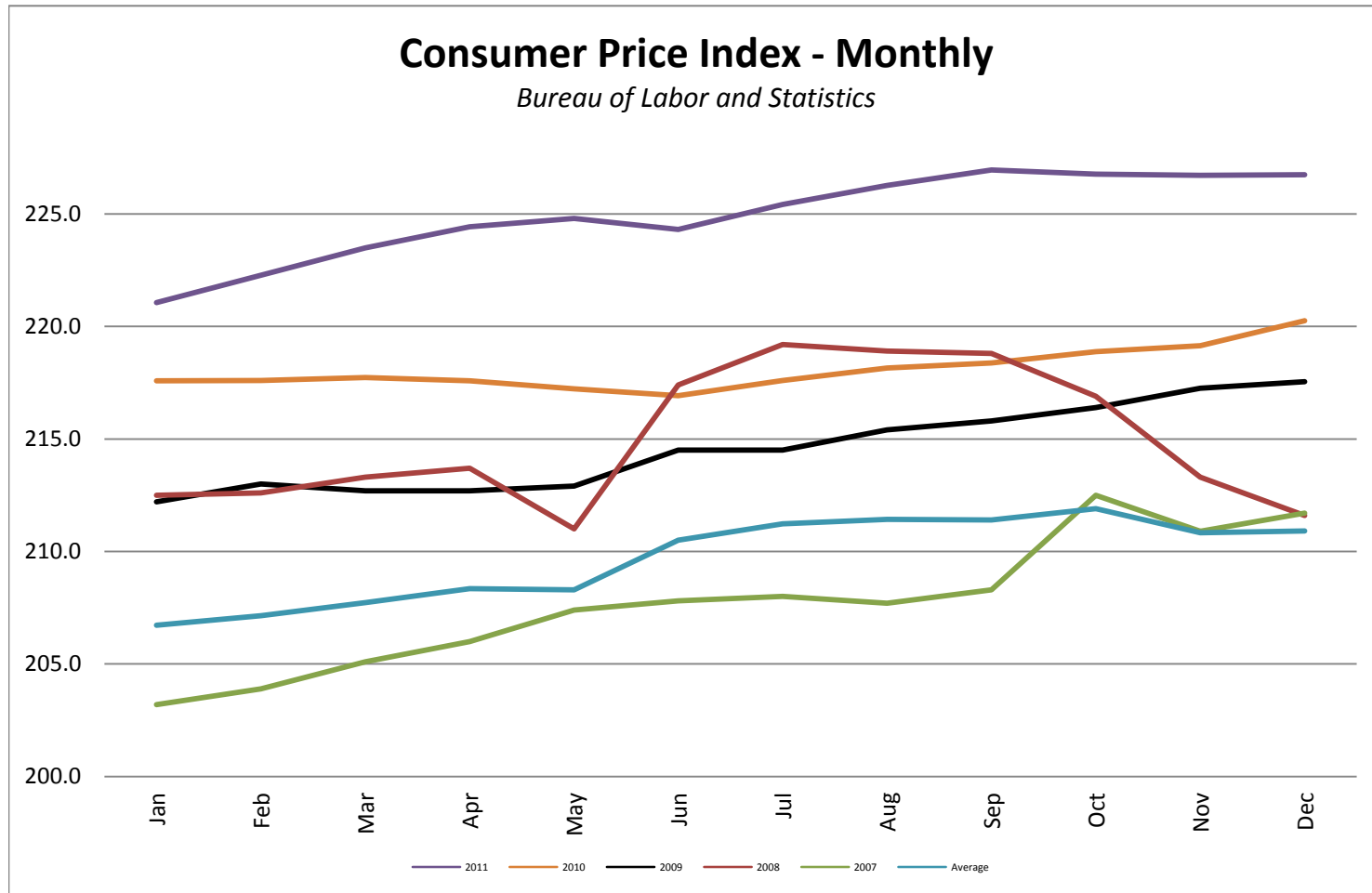
Foreign Exchange Rate

Peruvian New Sol

Federal Reserve Bank of New York

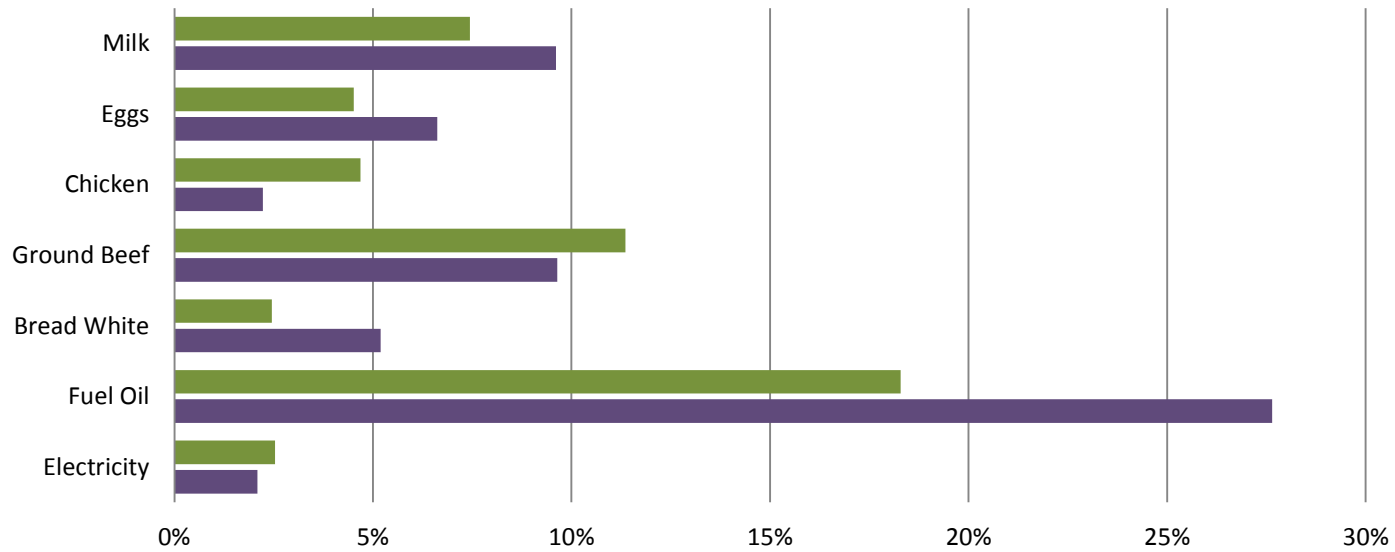


Consumer Price Index - Monthly



Consumer Price Index- Growth Percentage

Bureau of Labor & Standards



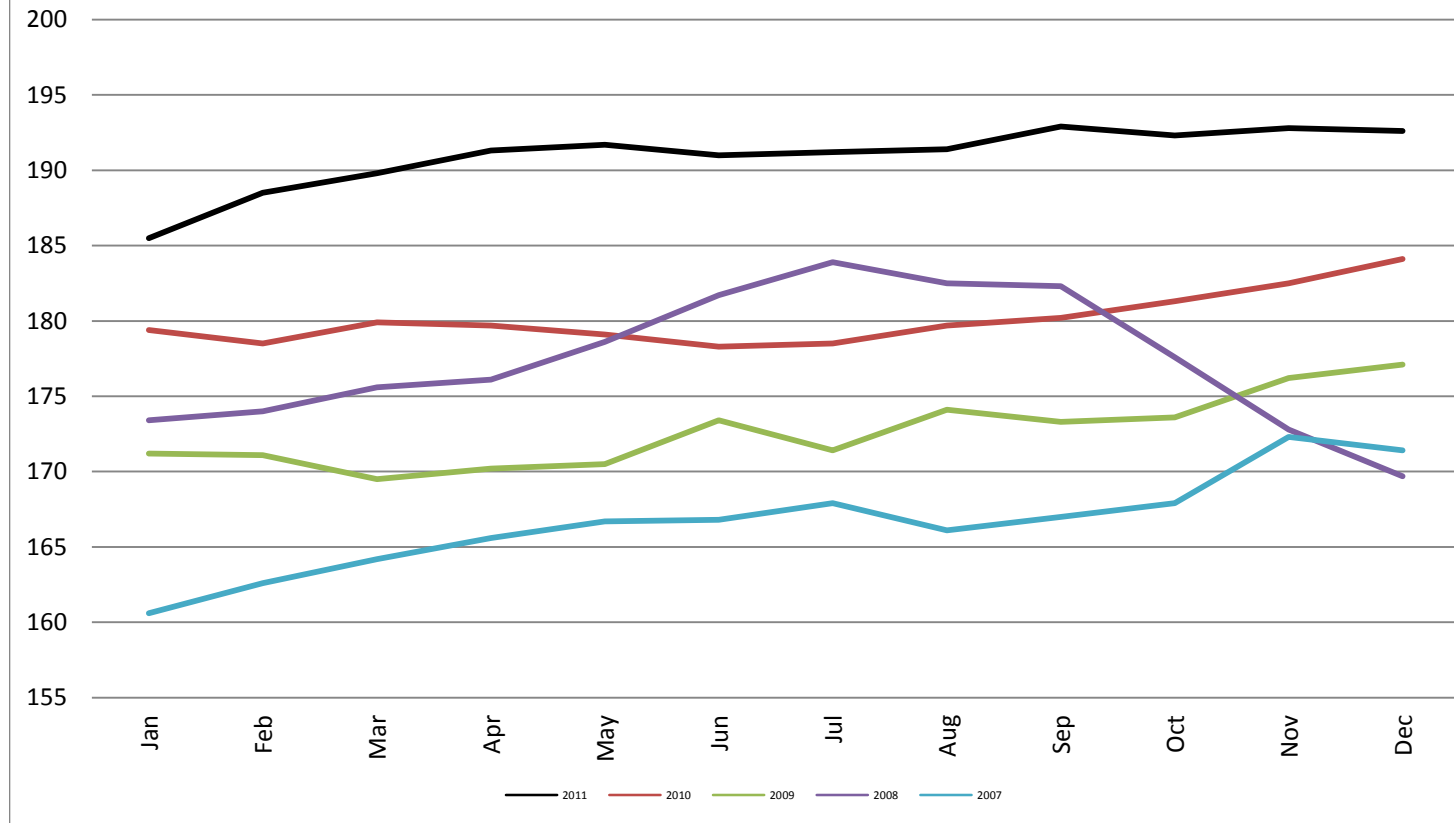
| | Electricity | Fuel Oil | Bread White | Ground Beef | Chicken | Eggs | Milk |
|-------------------|-------------|-------------|-------------|-------------|-------------|-------------|-------------|
| DEC 11 vs. DEC 10 | 0.025328244 | 0.182900094 | 0.024531025 | 0.113574352 | 0.046875 | 0.045175683 | 0.074442435 |
| YTD | 0.02093795 | 0.276464221 | 0.051941748 | 0.096400402 | 0.022298456 | 0.066177947 | 0.096082042 |

■ DEC 11 vs. DEC 10 ■ YTD

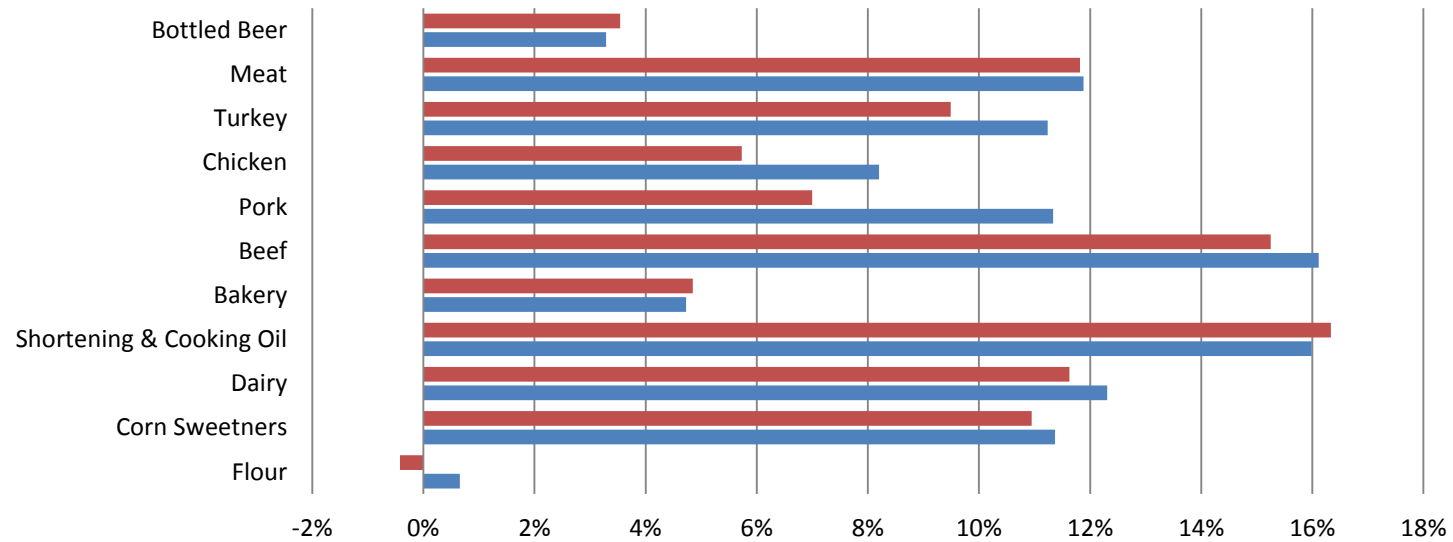
Producer Price Index - Monthly

Producer Price Index - Monthly

Bureau of Labor and Statistics



PPI Commodities - Growth Percentage
Bureau of Labor & Standards



| | Flour | Corn Sweetners | Dairy | Shortening & Cooking Oil | Bakery | Beef | Pork | Chicken | Turkey | Meat | Bottled Beer |
|-------------------|-----------|----------------|----------|--------------------------|----------|----------|----------|----------|----------|----------|--------------|
| DEC 11 vs. DEC 10 | -0.004225 | 0.109465 | 0.116279 | 0.163343 | 0.048484 | 0.152515 | 0.07 | 0.057284 | 0.094905 | 0.118176 | 0.035398 |
| YTD | 0.006572 | 0.113696 | 0.123085 | 0.159892 | 0.047272 | 0.161163 | 0.113333 | 0.082036 | 0.112351 | 0.118818 | 0.032869 |

■ DEC 11 vs. DEC 10 ■ YTD