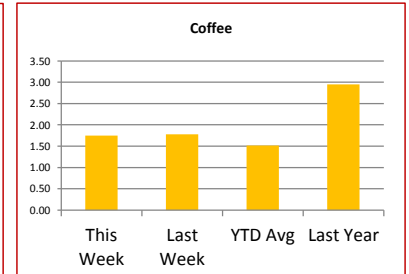
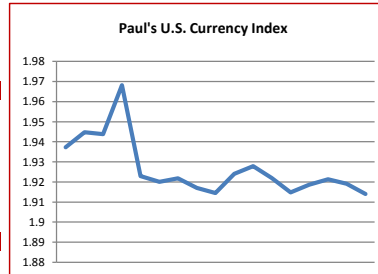
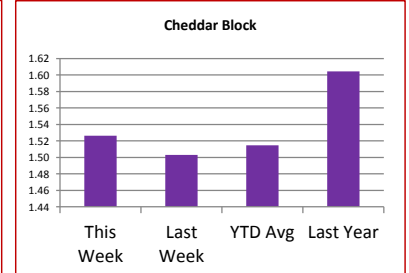
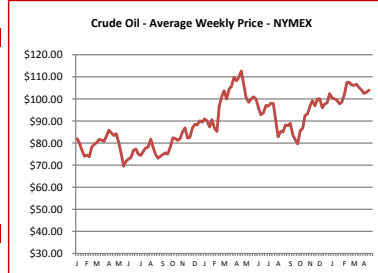
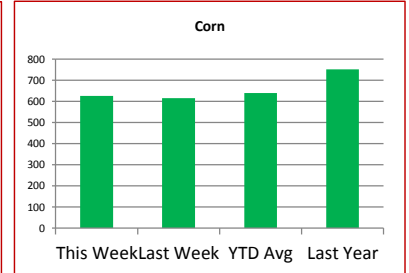
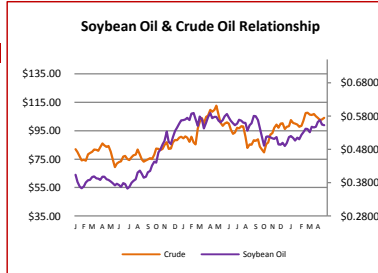


# Key Commodity Report Weekly

April 30, 2012

## Commodity Activity - Weekly Average

4/23/2012	This Week	Last Week	YTD Avg	Last Year	vs. Last Week	vs. Last Year
<b>CME Group</b>						
<a href="#">Corn</a>	↑ 625.75	615.05	638.83	751.60	1.74%	-16.74%
<a href="#">Soybean</a>	↑ 1470.1	1423.2	1309.3	1378.7	3.29%	6.63%
<a href="#">Soy Meal</a>	↑ 414.56	394.74	351.99	356.88	5.02%	16.16%
<a href="#">Soybean Oil</a>	↓ 0.5532	0.5552	0.5364	0.5774	-0.36%	-4.19%
<a href="#">Rough Rice</a>	↓ 14.99	15.51	15.11	14.39	-3.35%	4.16%
<a href="#">Wheat</a>	↑ 626.85	616.60	639.28	785.30	1.66%	-20.18%
<a href="#">Cheddar Barrel</a>	↓ 1.446	1.460	1.498	1.592	-0.99%	-9.17%
<a href="#">Cheddar Block</a>	↑ 1.527	1.503	1.515	1.605	1.56%	-4.86%
<a href="#">Milk Class III</a>	↓ 15.74	15.77	16.15	16.72	-0.20%	-5.88%
<a href="#">Butter AA</a>	↓ 1.385	1.418	1.482	2.029	-2.33%	-31.76%
Source: CME Group						
<b>USDA Weekly Prices</b>						
<a href="#">Live Cattle</a>	↑ 1.224	1.222	1.246	1.188	0.16%	3.02%
<a href="#">Course Ground Beef</a>	↑ 2.265	2.120	2.076	2.110	6.84%	7.35%
<a href="#">Live Hog</a>	↑ 0.5490	0.5420	0.5759	0.6340	1.29%	-13.41%
<a href="#">Pork Bellies</a>	↓ 0.85	0.91	1.12	1.41	-6.85%	-39.86%
<a href="#">Chicken Whole (GA Dock)</a>	↔ 0.9325	0.9325	0.9176	0.8650	0.00%	7.80%
<a href="#">Crude Corn Oil</a>	↑ 61.80	61.00	57.88	69.30	1.31%	-10.82%
<a href="#">Crude Peanut Oil</a>	↑ 118.00	117.00	111.54	87.00	0.85%	35.63%
Source: USDA						
<b>NYMEX Futures &amp; Retail</b>						
<a href="#">Crude Oil</a>	↑ 104.04	103.02	102.87	112.70	0.99%	-7.68%
<a href="#">Heating Oil No.2 Spot</a>	↑ 312.95	312.70	307.00	322.08	0.08%	-2.83%
<a href="#">On Highway Diesel</a>	↓ 408.50	412.70	398.73	409.80	-1.02%	-0.32%
<a href="#">On Highway Gasoline</a>	↓ 387.00	392.20	364.14	387.90	-1.33%	-0.23%
<a href="#">Natural Gas</a>	↑ 2.054	1.950	2.404	4.486	5.33%	-54.21%
Source: New York Mercantile Exchange						
<b>Federal Reserve</b>						
<a href="#">*Euro</a>	↑ 1.3199	1.3116	0.0000	1.4708	0.63%	-10.26%
<a href="#">*British Pound</a>	↑ 1.6155	1.5984	1.5520	1.6572	1.07%	-2.52%
<a href="#">Canadian Dollar</a>	↓ 0.9868	0.9920	1.0009	0.9508	-0.52%	3.79%
<a href="#">Chinese Yuan</a>	↓ 6.296	6.299	6.305	6.512	-0.05%	-3.32%
<a href="#">Swiss Frank</a>	↓ 0.910	0.916	0.921	0.876	-0.65%	3.95%
Source: Federal Reserve Bank of New York						
<b>NYBOT Futures</b>						
<a href="#">Sugar 16</a>	↓ 29.84	30.63	36.41	37.38	-2.58%	-20.17%
<a href="#">Coffee</a>	↓ 1.7500	1.7770	1.5125	2.9535	-1.52%	-40.75%
Source: Intercontinental Exchange						



## Market Commentary

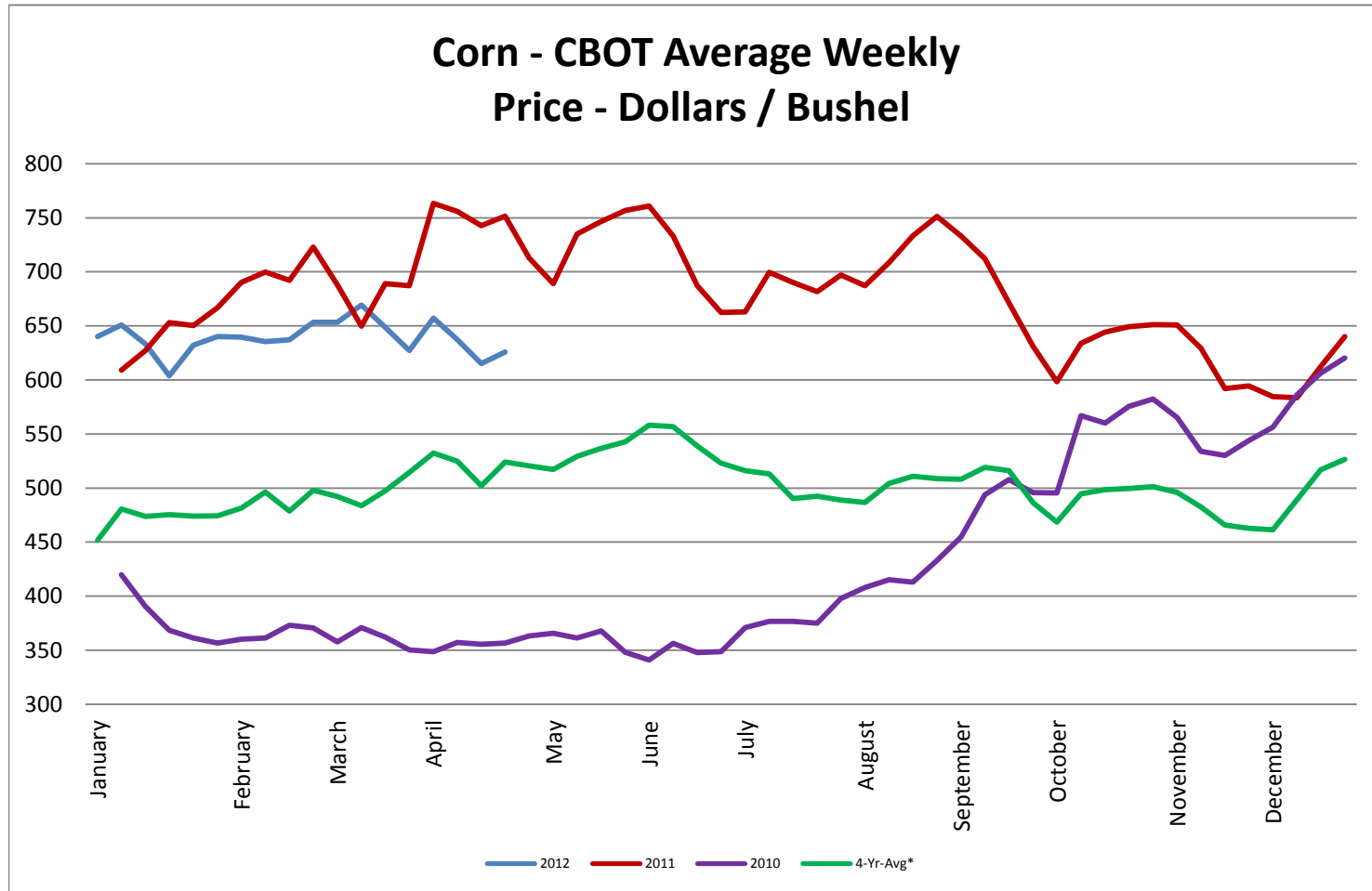
**Commentary:** South American crop estimates keep shrinking and so the agricultural markets keep trending higher. Specifically soybeans and meal increased heavily over the previous week. Corn and wheat were higher, but not as significant. Soybean oil, however, ended lower. This almost makes no sense, especially since crude oil was higher too, but understand the mind of a speculator and they see profits by spreading the soybean meal and soybean oil. Also seen driving futures higher were large exports to China, and etc. from the U.S. We are starting to see more Chinese shipments for both old and new crop coming into play as a result of the poor harvest in South America. What this means, is that they are buying beans and meal from current supply and future supply, or what will be harvested this coming fall. Seeding is going on strongly in the U.S. Weather is key but currently no areas appear to be behind and if they are, not by much. Some areas of concern are West Texas and the upper mid-west which are in drought conditions. The upper mid-west is improving rapidly, though.

Corn futures closed between \$6.11 and \$6.53 per bushel, ending the week at \$6.53.  
 Soybean futures closed between \$14.37-1/4 and \$14.96-3/4 per bushel, ending the week at \$14.96-3/4.  
 Soybean meal futures closed between \$399.80 and \$427.40 per short ton, ending the week at \$427.40.  
 Soybean oil futures closed between \$0.5509 and \$0.5565 per pound, ending the week at \$0.5518.  
 Wheat futures closed between \$6.16-1/2 and \$6.42-1/4 per bushel, ending the week at \$6.42-12.

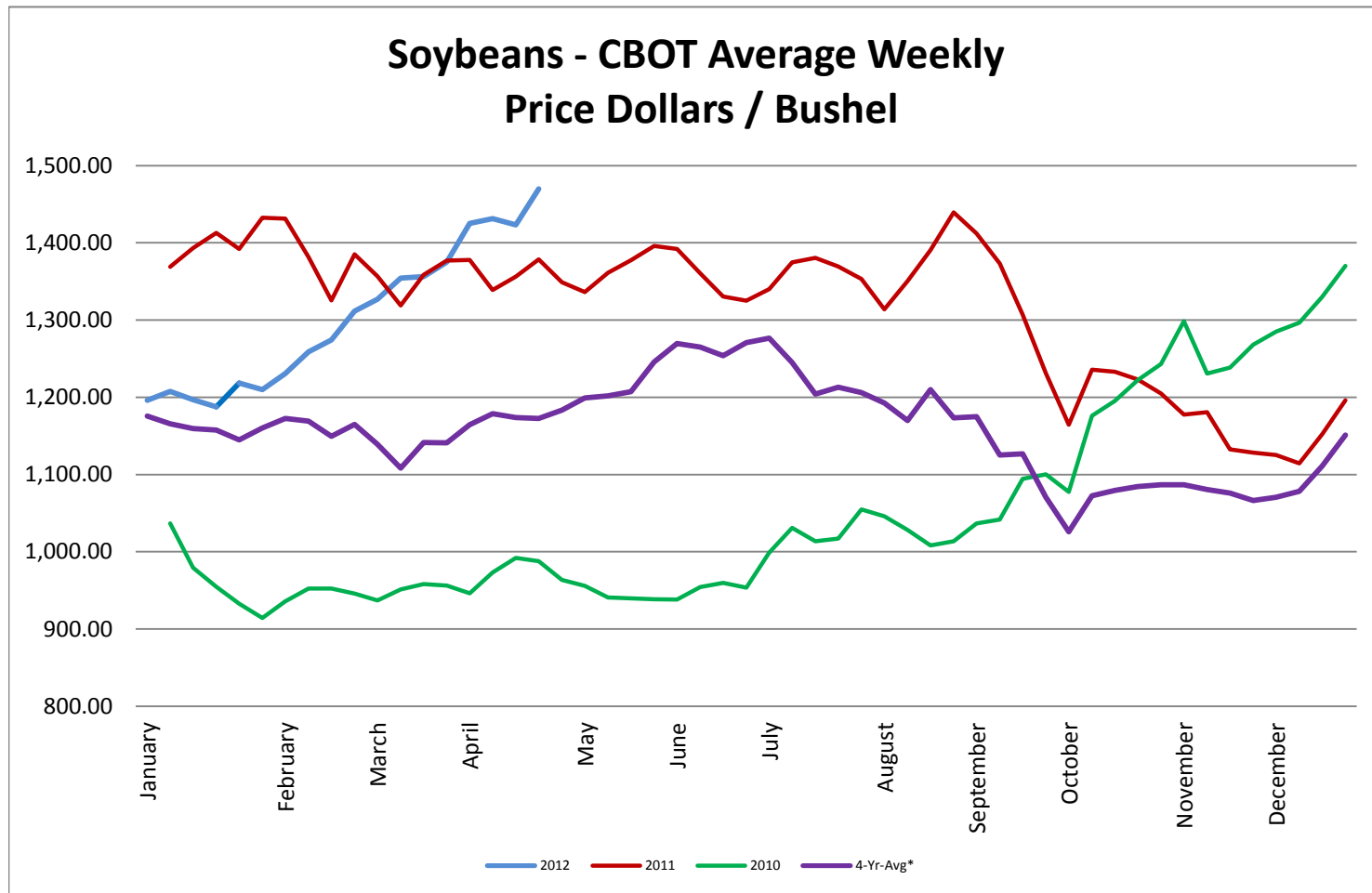
\* Used as the indexing unit of measure for this exchange rate

**Commodity Information:** Commodity information found in this sheet is publically available. It can be found from numerous sources, all of which are noted. This report is for informational purposes only. Please do not make hedging or buying decisions based on this report. Please note that rounding can affect the percent of change values.

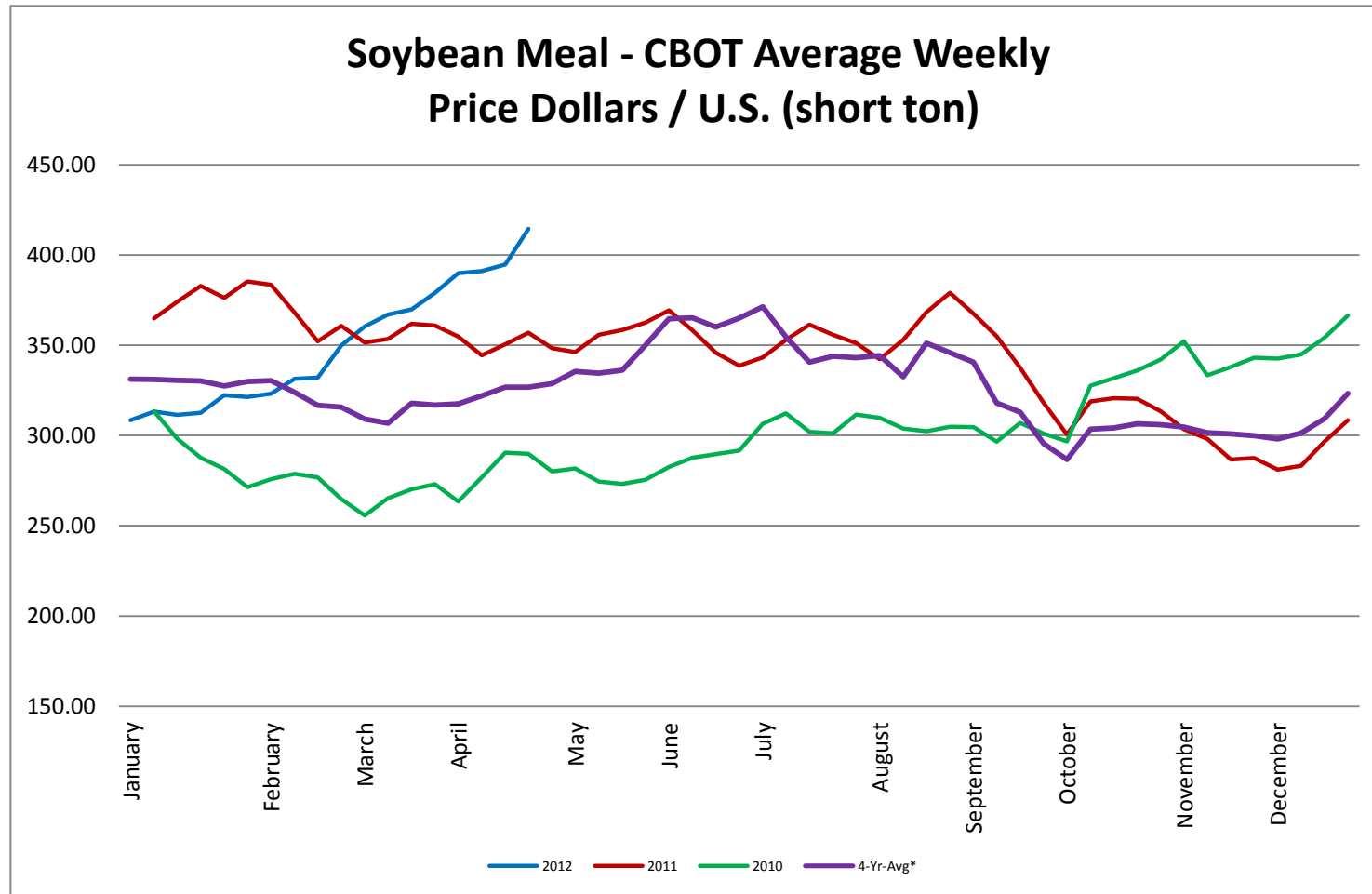
## Corn - CBOT Weekly Futures Price



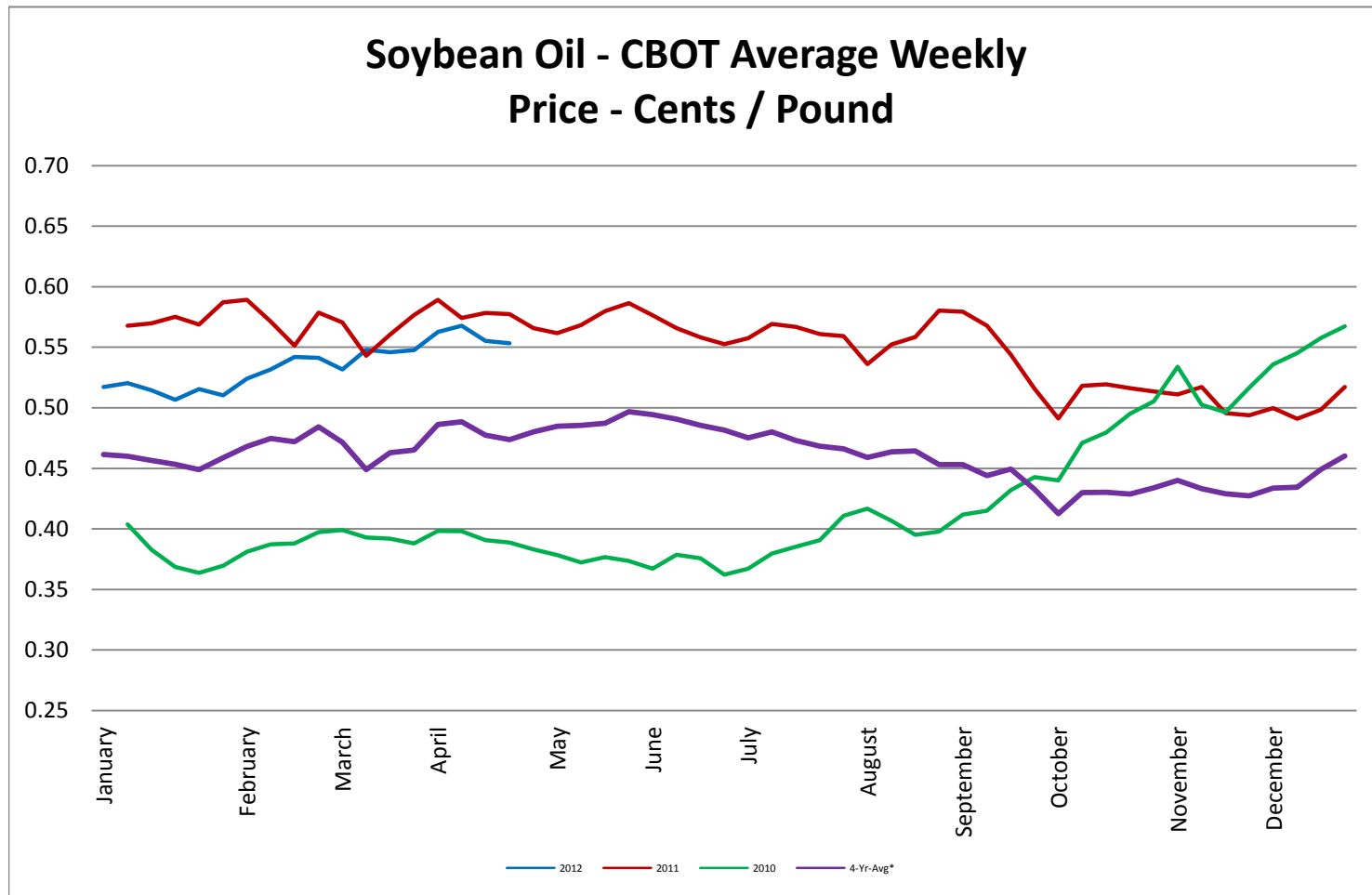
## Soybeans - CBOT Weekly Average Price - Dollars / Bushel



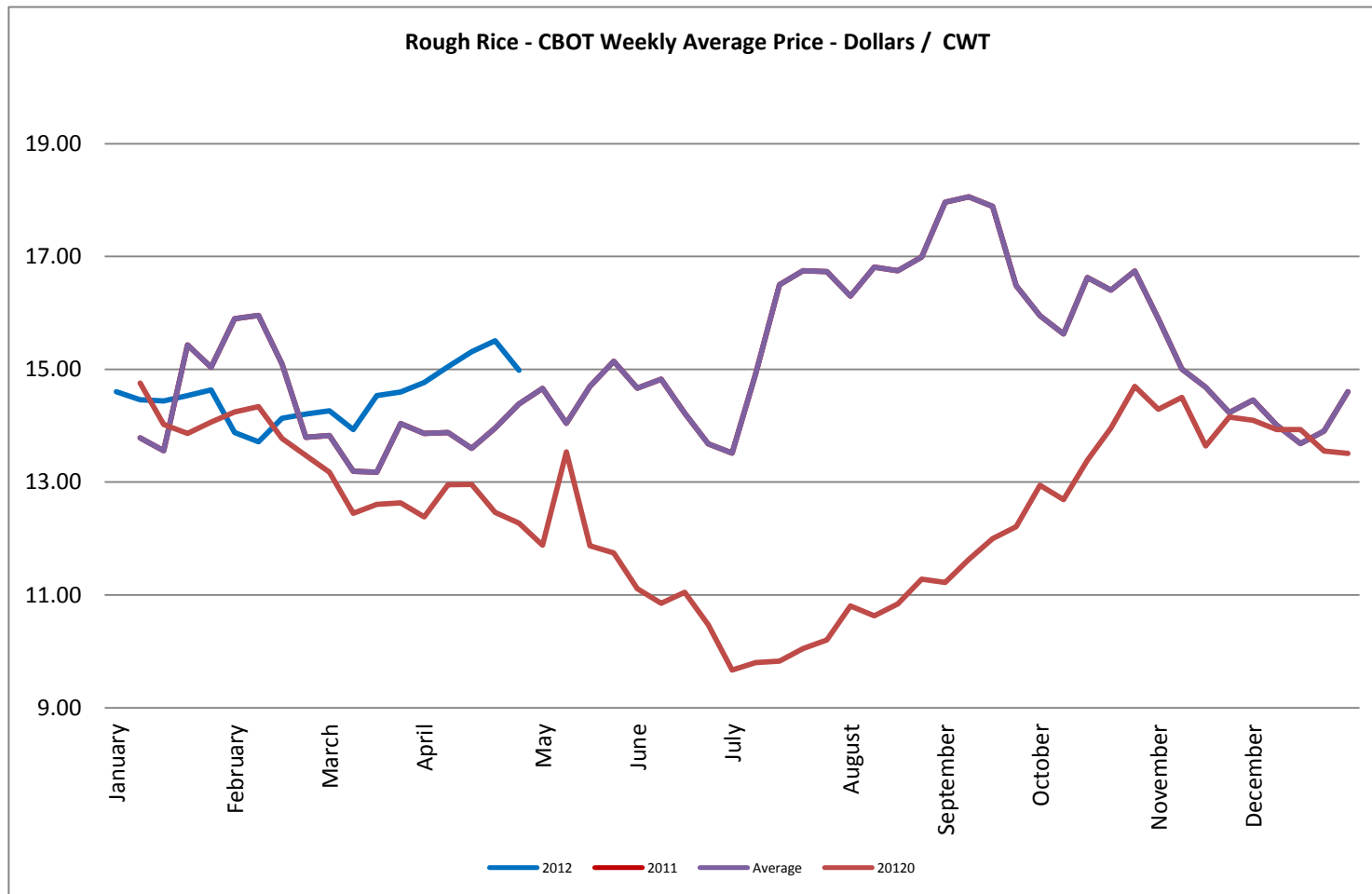
Soybean Meal - CBOT Weekly Average Price - Dollars / US Ton



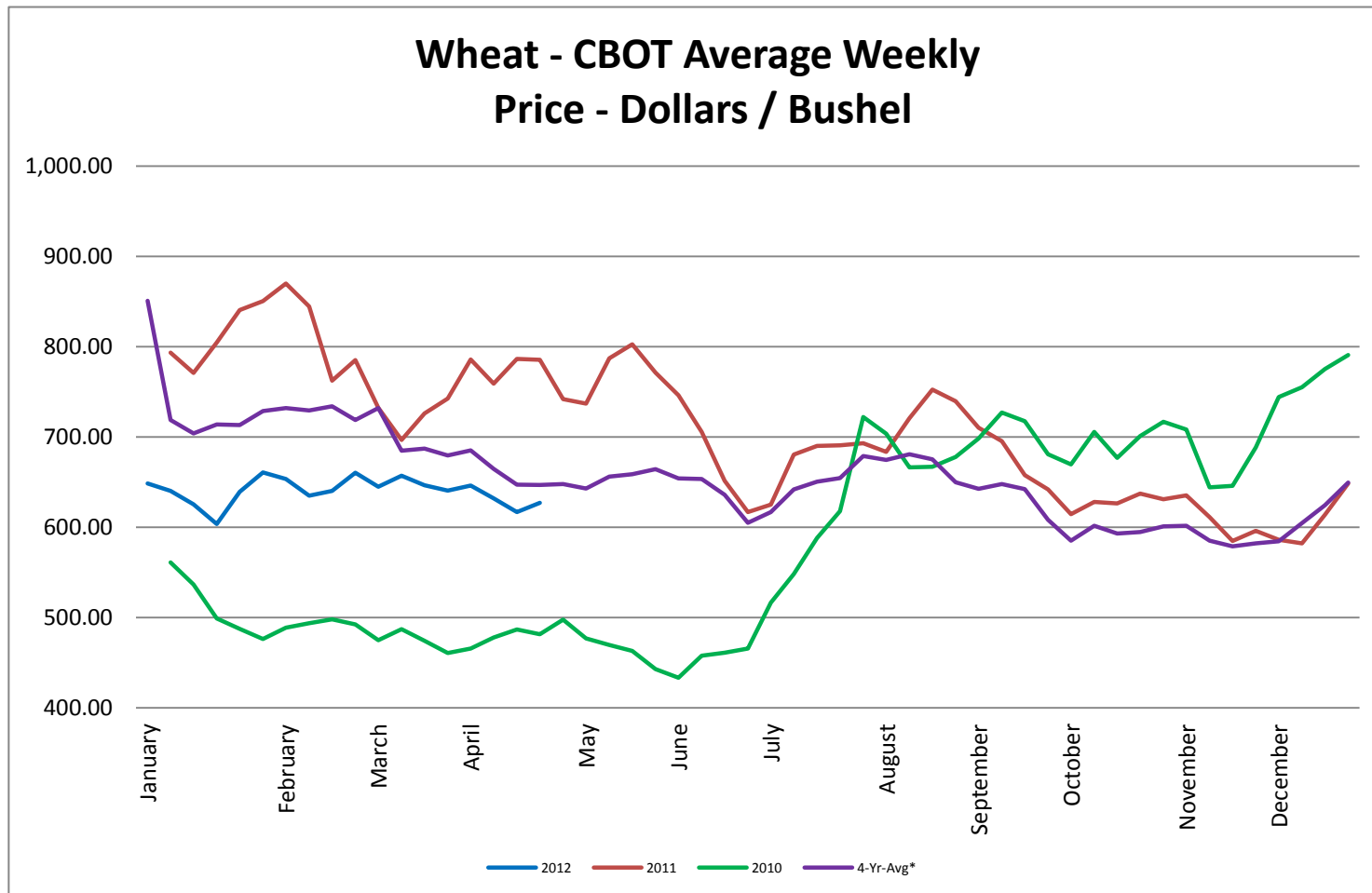
Soybean Oil - CBOT Weekly Average Price - Cents / Pound



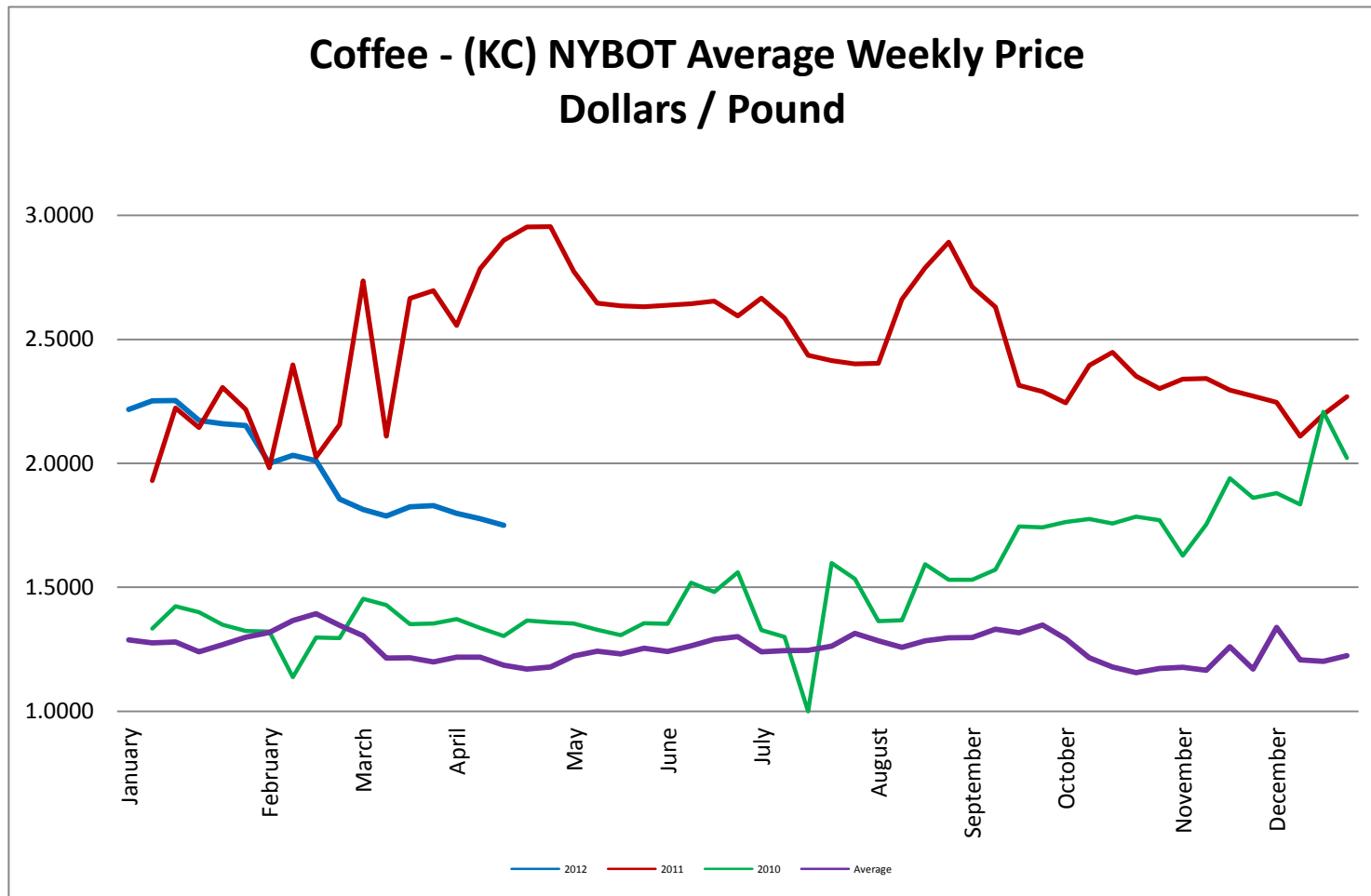
## Rough Rice - CBOT Weekly Average Price - Dollars / CWT



Wheat - CBOT Weekly Average Price - Dollars / Bushel

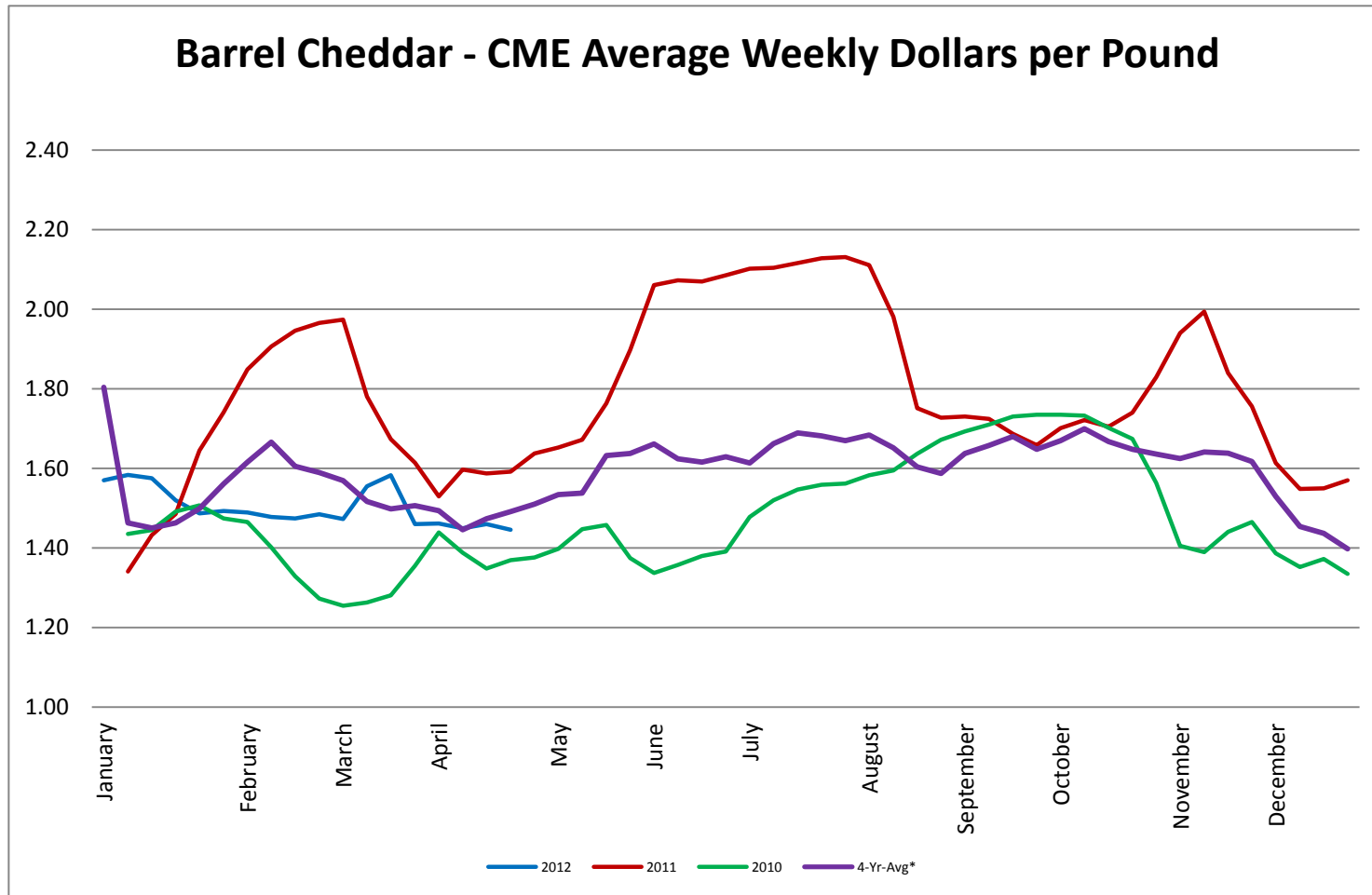


Coffee - (KC) NYBOT Average Weekly Price - Dollars per Pound



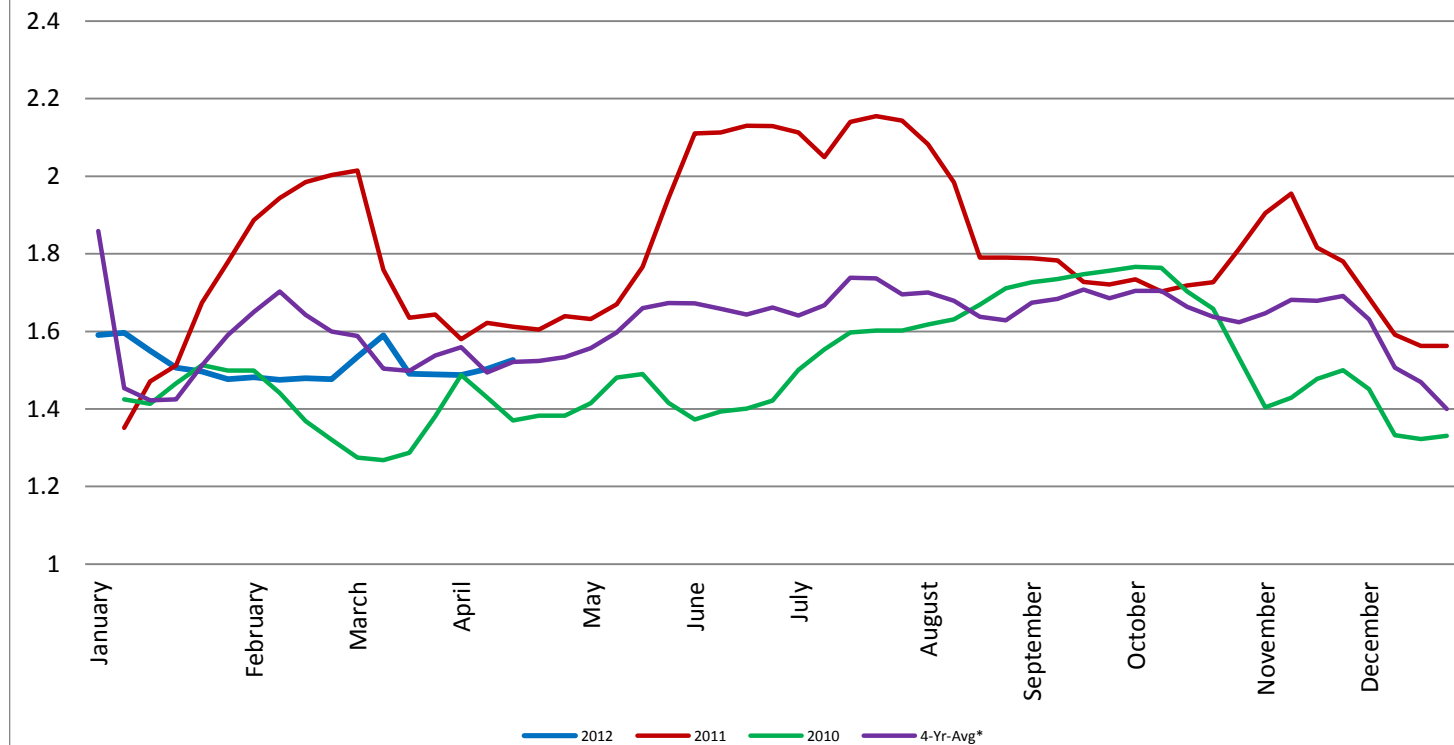


Barrel Cheddar - CME Average Weekly Price / Pound

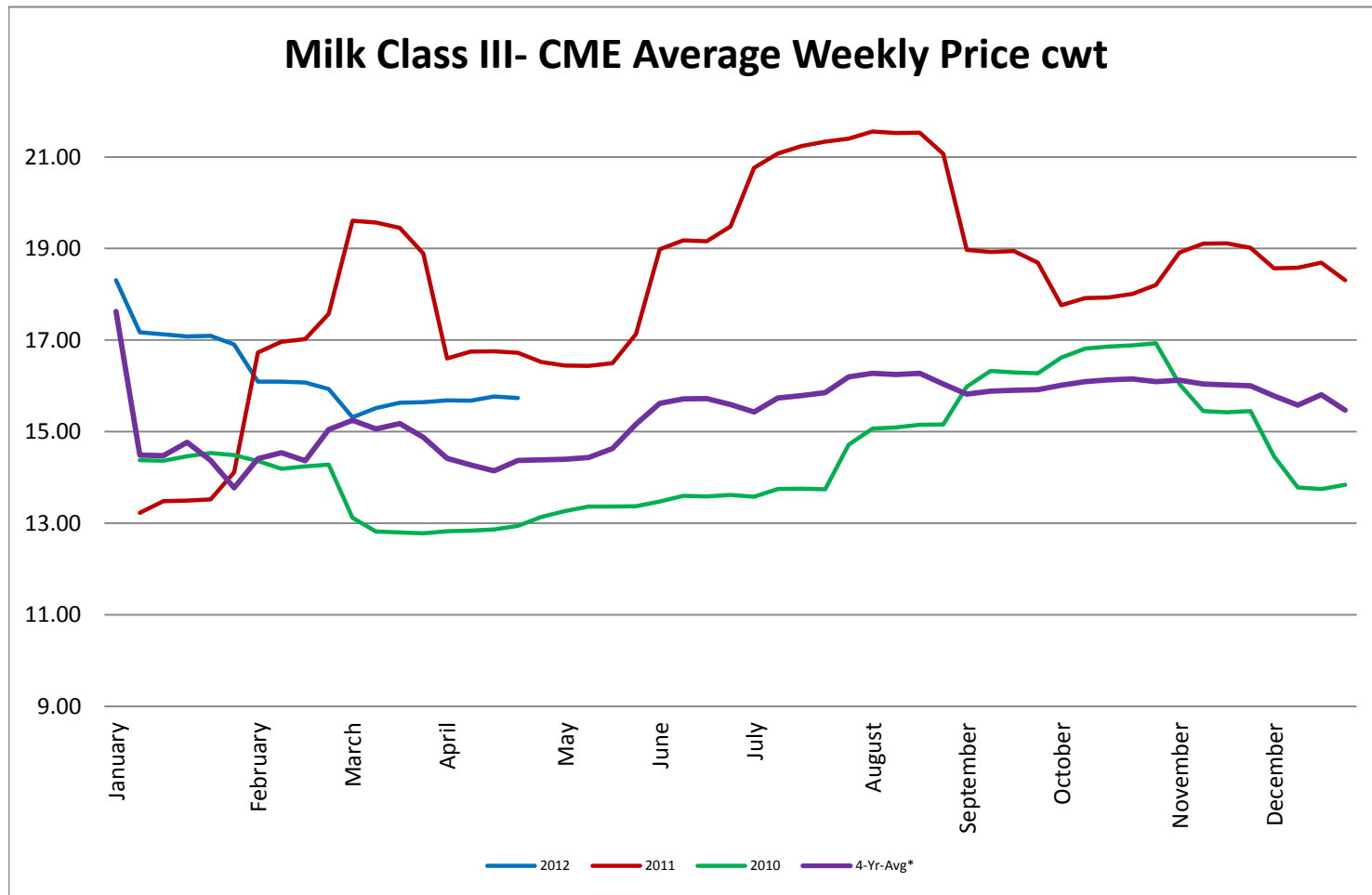


40 LB Block Cheddar - CME Average Weekly Price / Pound

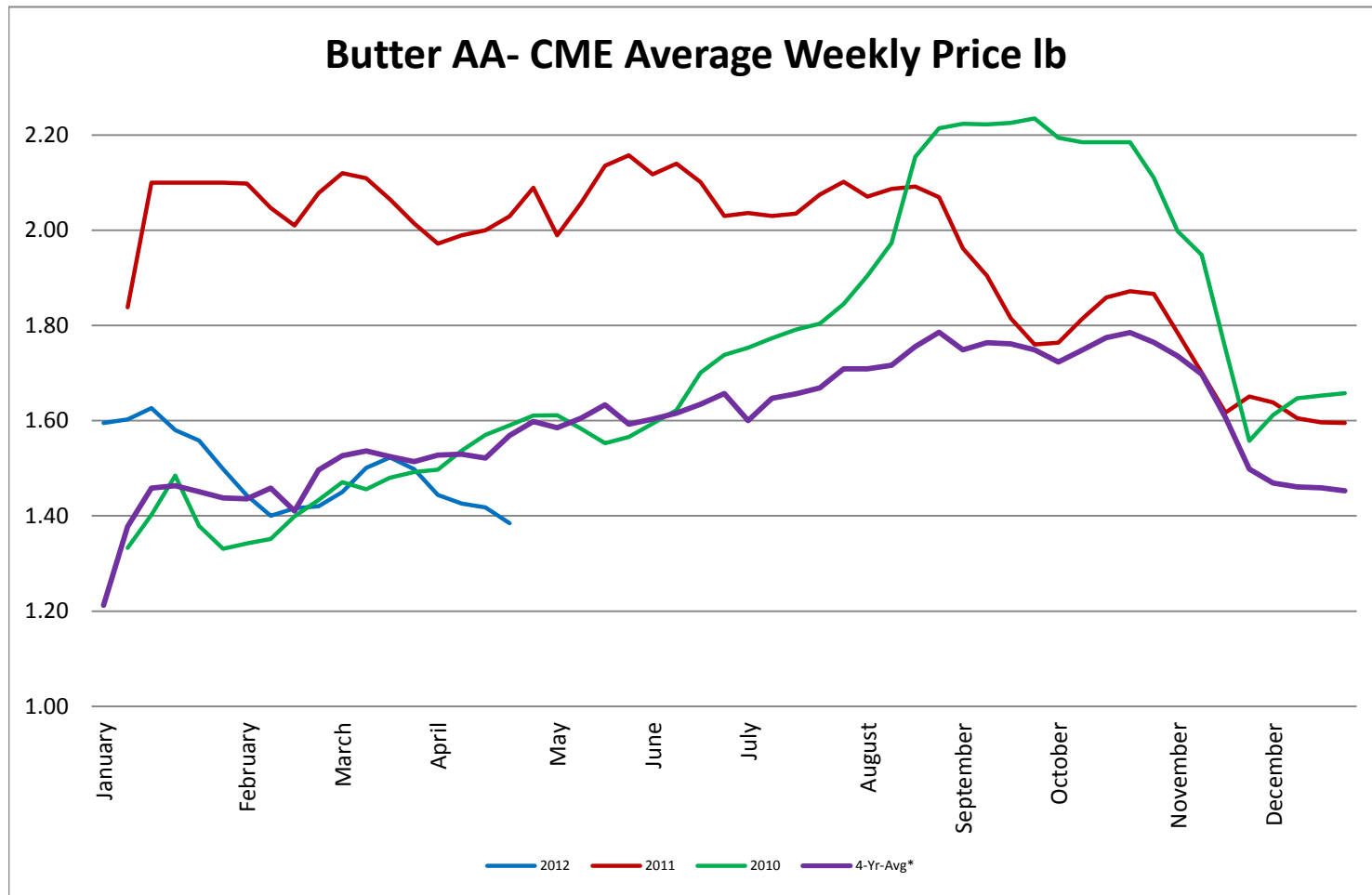
**Block Cheddar 40 #- CME Average Weekly Dollars per Pound**



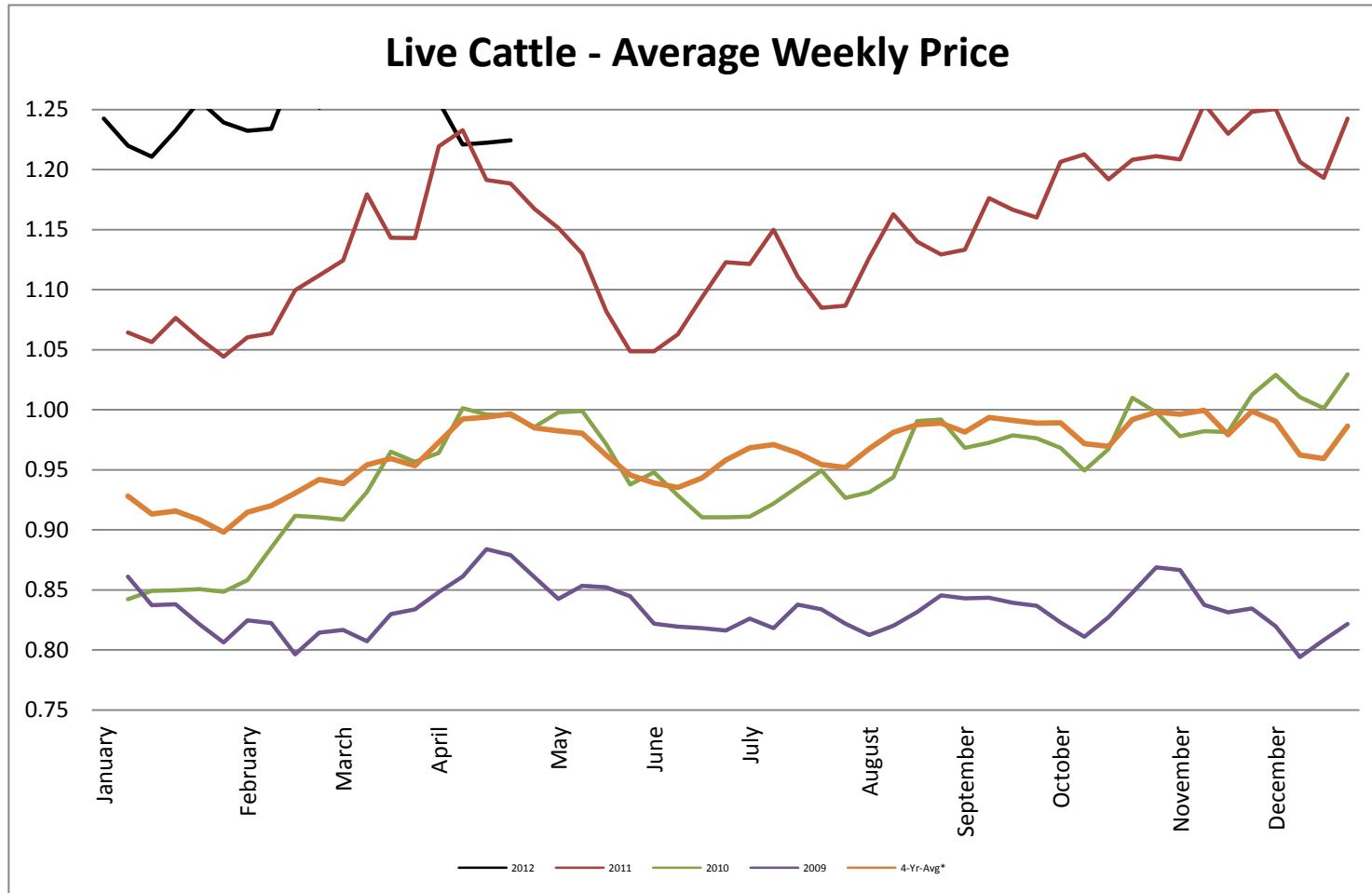
## Milk Class III - CME Average Weekly Price CWT



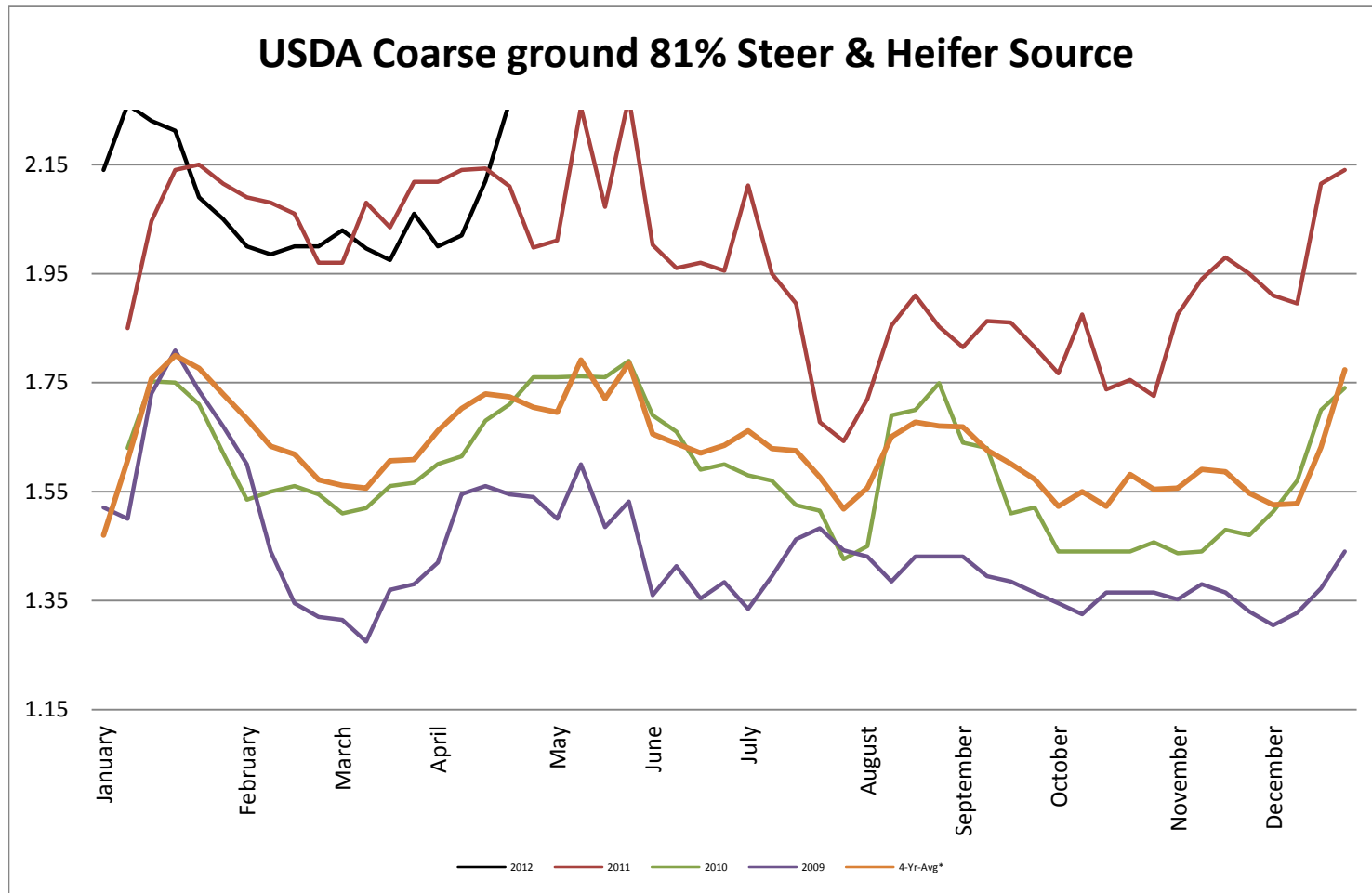
## Butter AA - CME Average Weekly Price lb



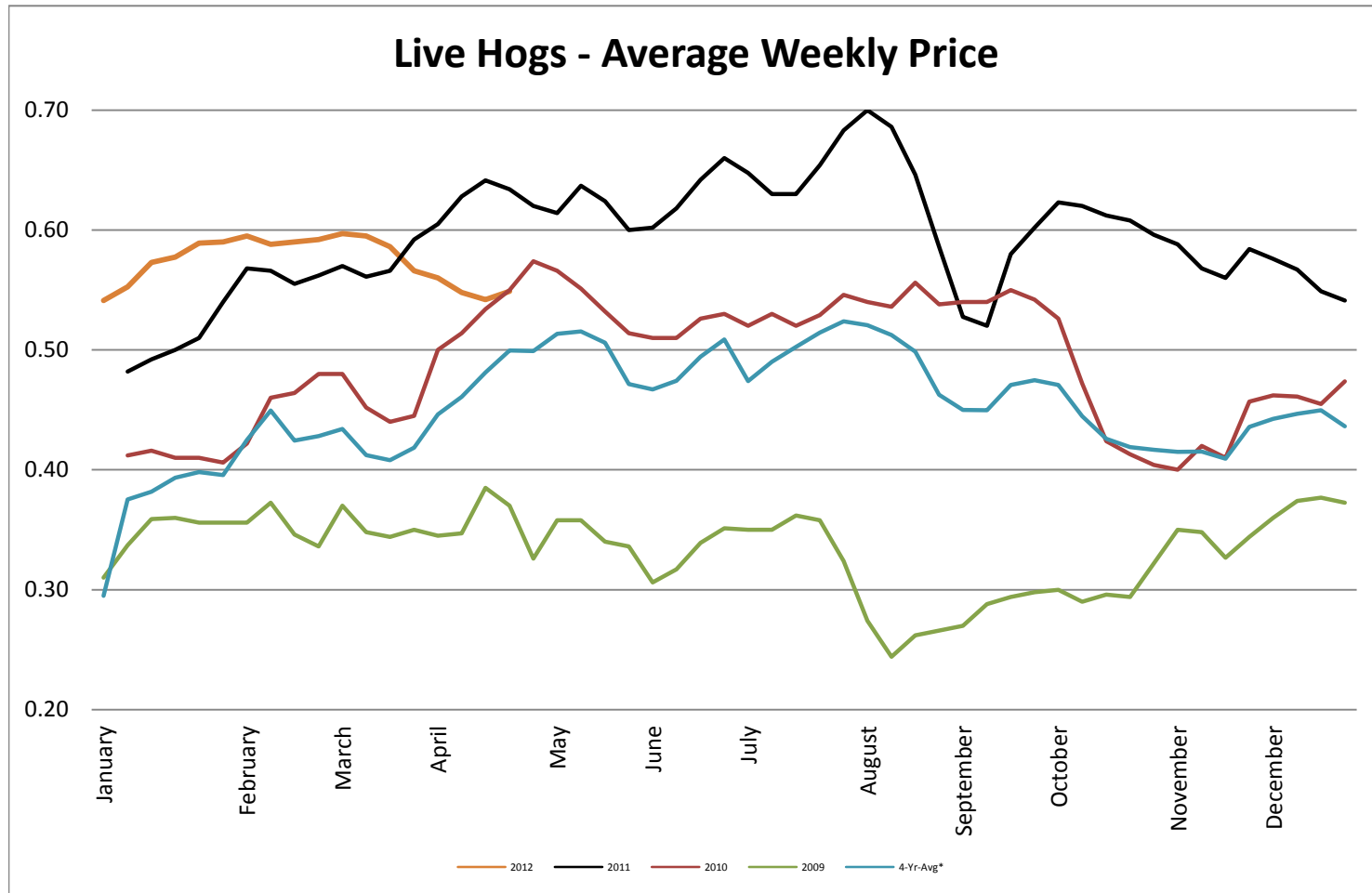
## Live Cattle - Average Weekly Price USDA - 6 State Average



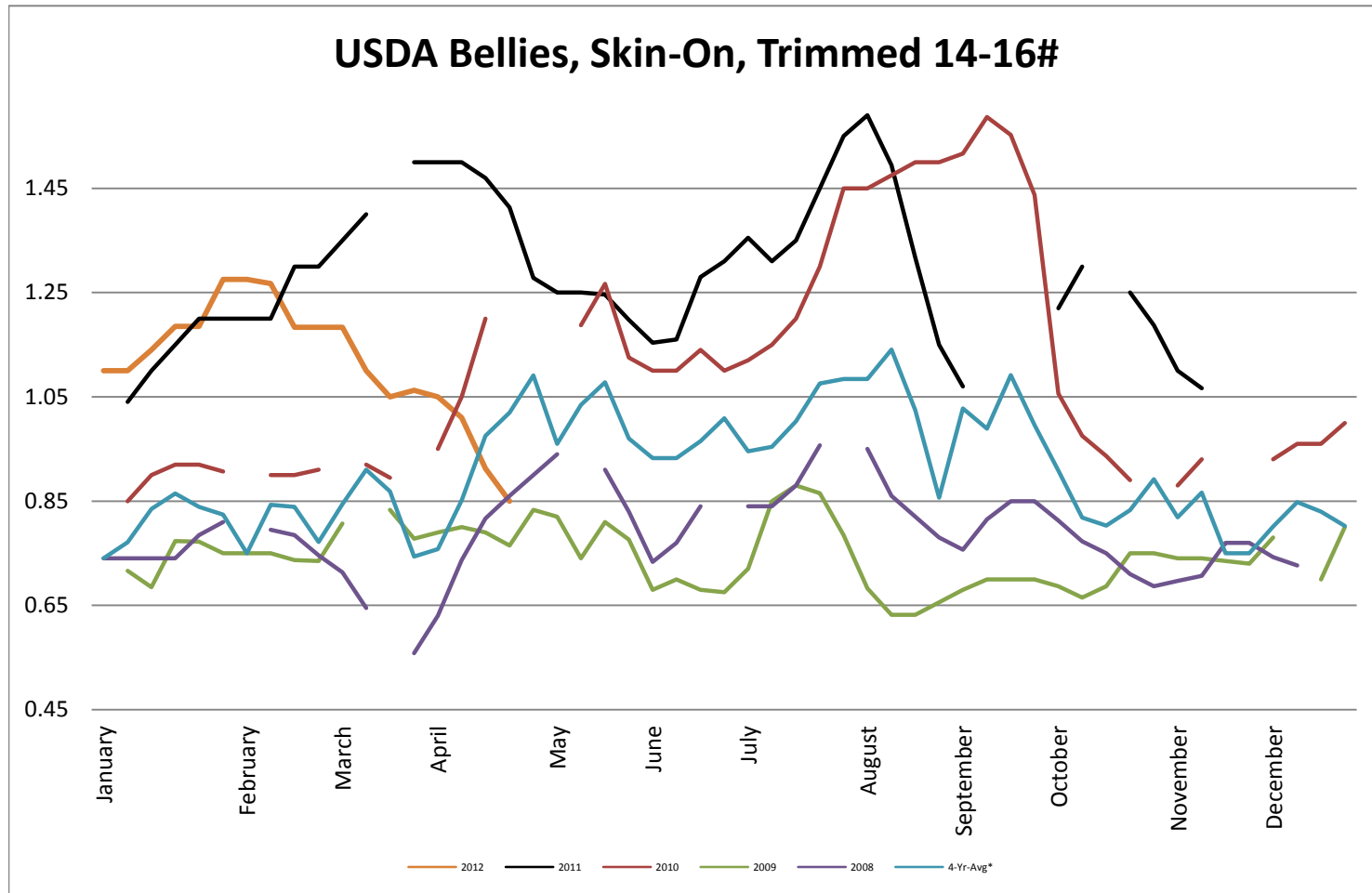
## USDA Coarse ground 81% Steer & Heifer Source



## USDA Live Hogs - Average Weekly Price

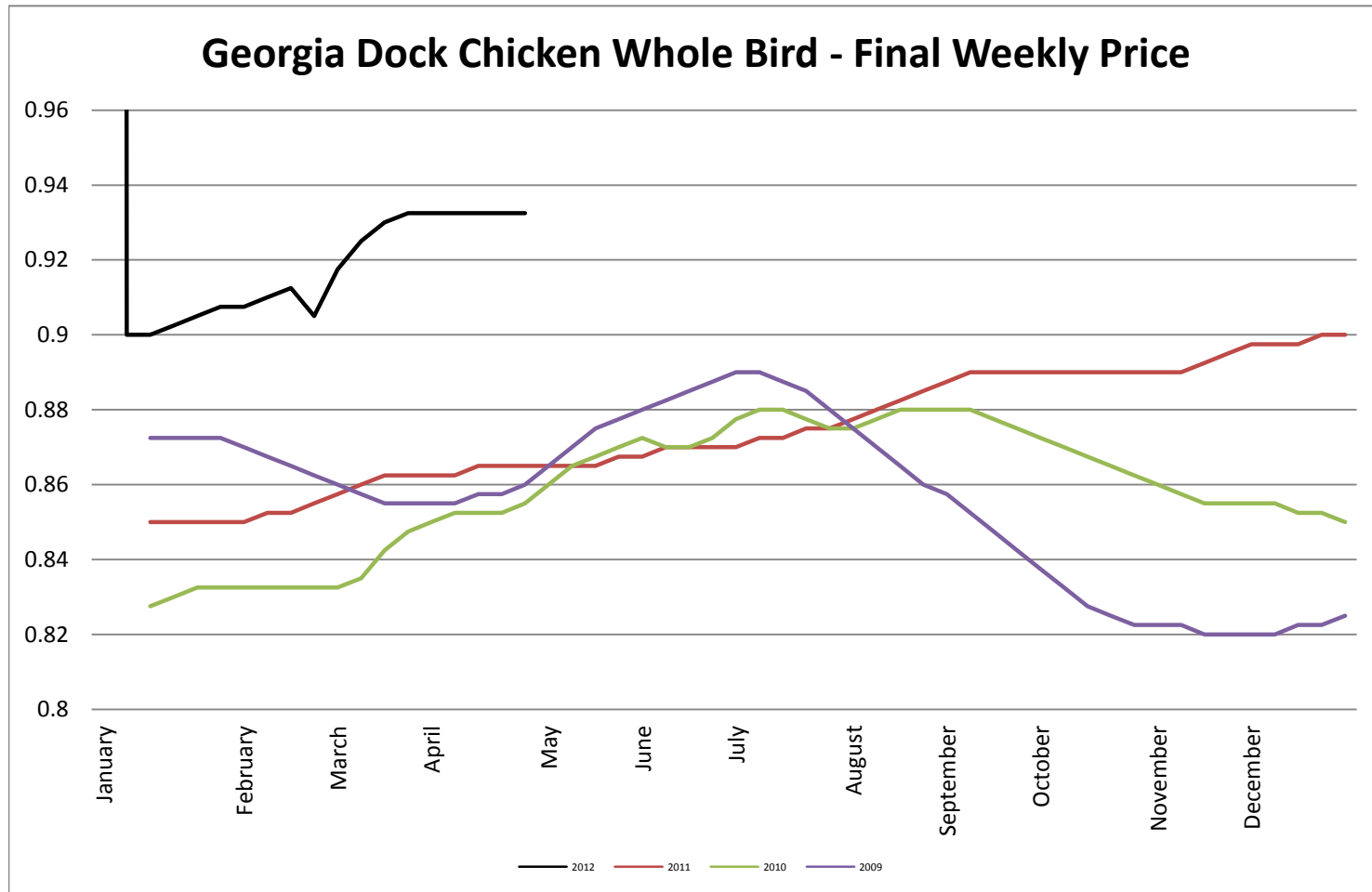


USDA Bellies, Skin-On, Trimmed 14-16#



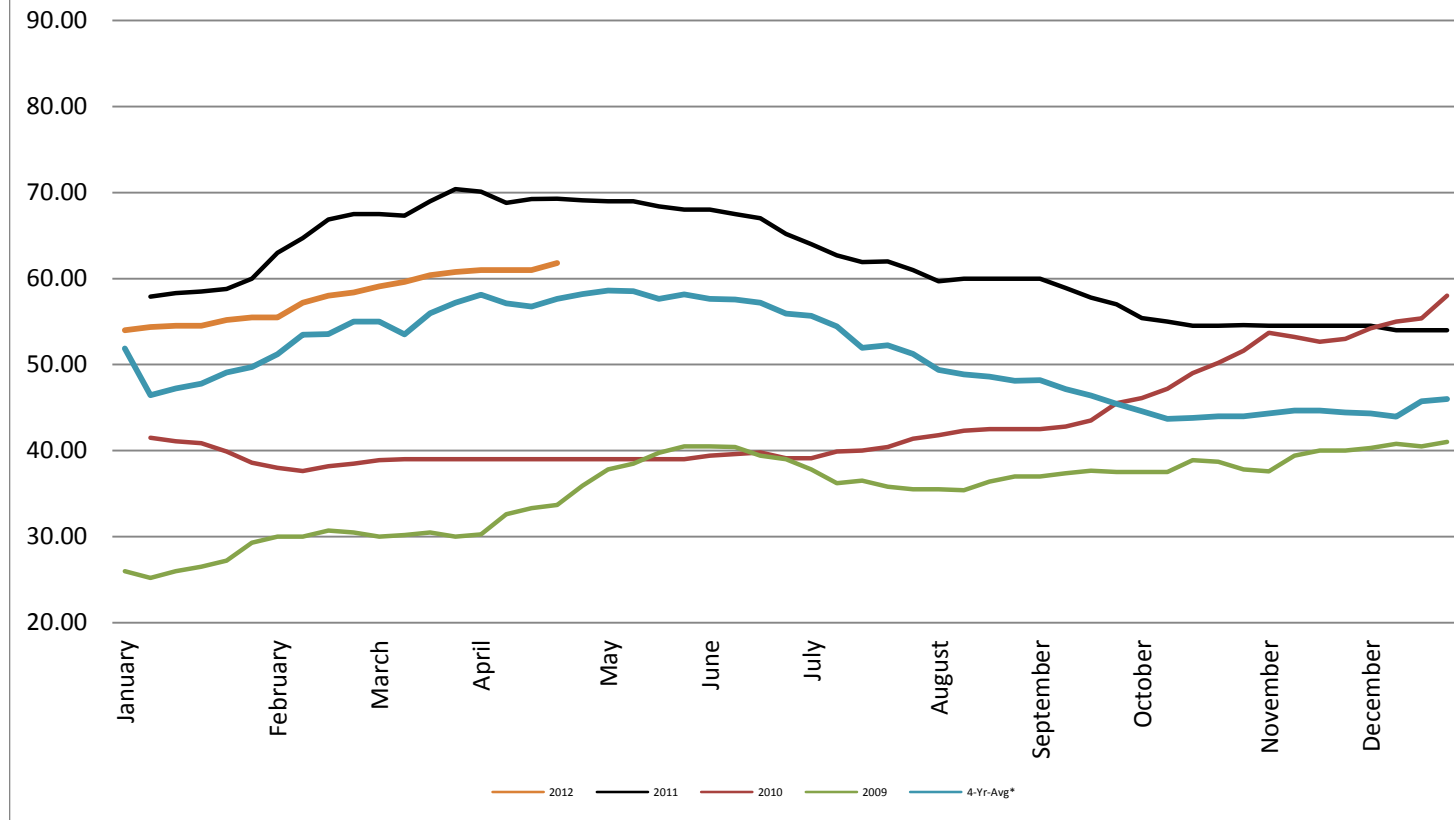


## Georgia Dock Chicken - Final Weekly Price

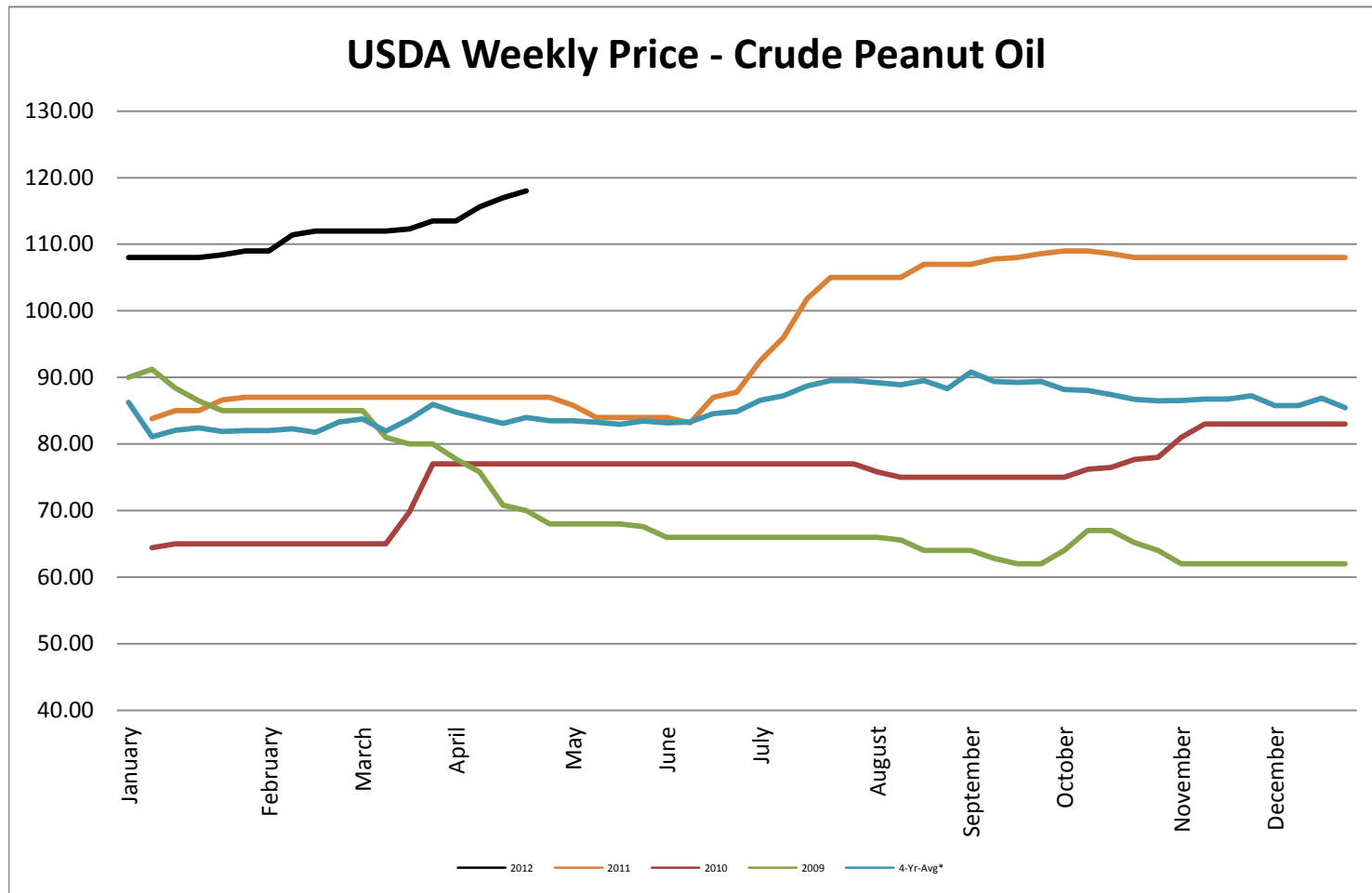


## USDA Weekly Price - Crude Corn Oil

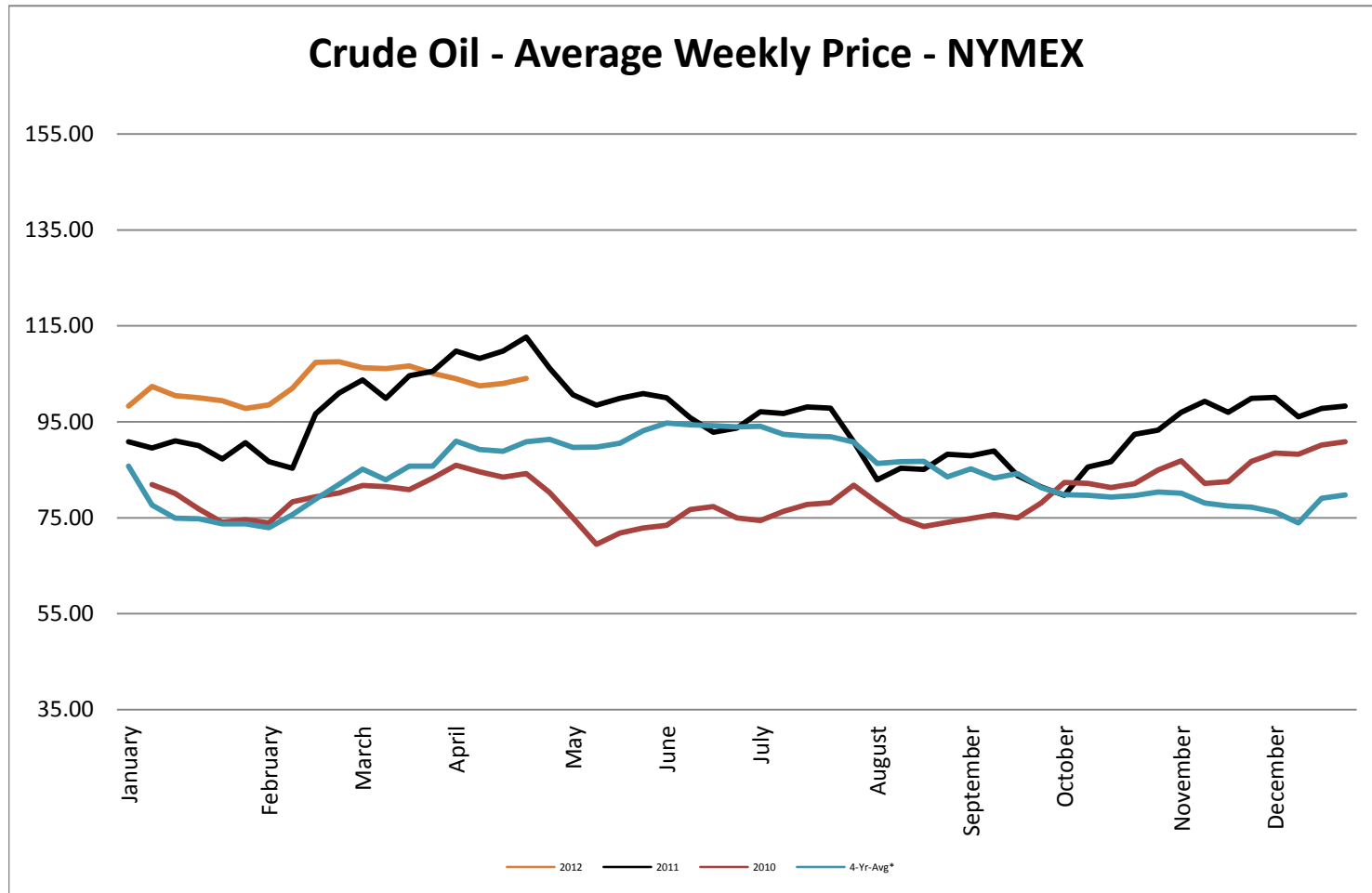
### USDA Illinois Weekly Price - Crude Corn Oil

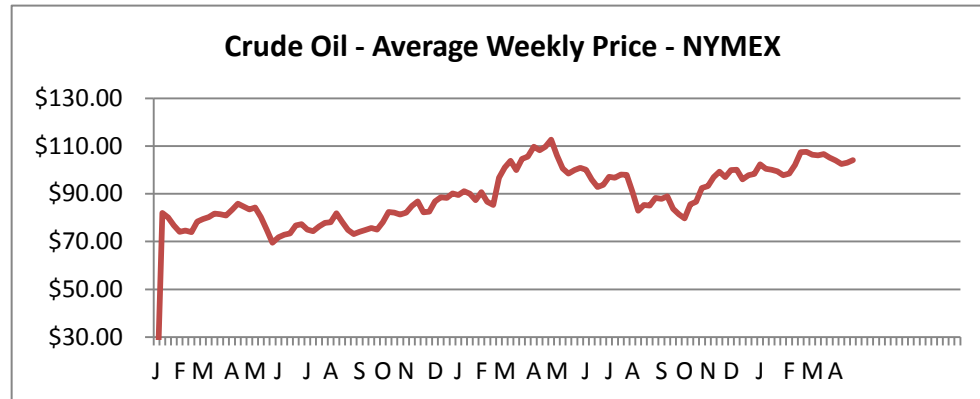


## USDA Weekly Price - Crude Peanut Oil

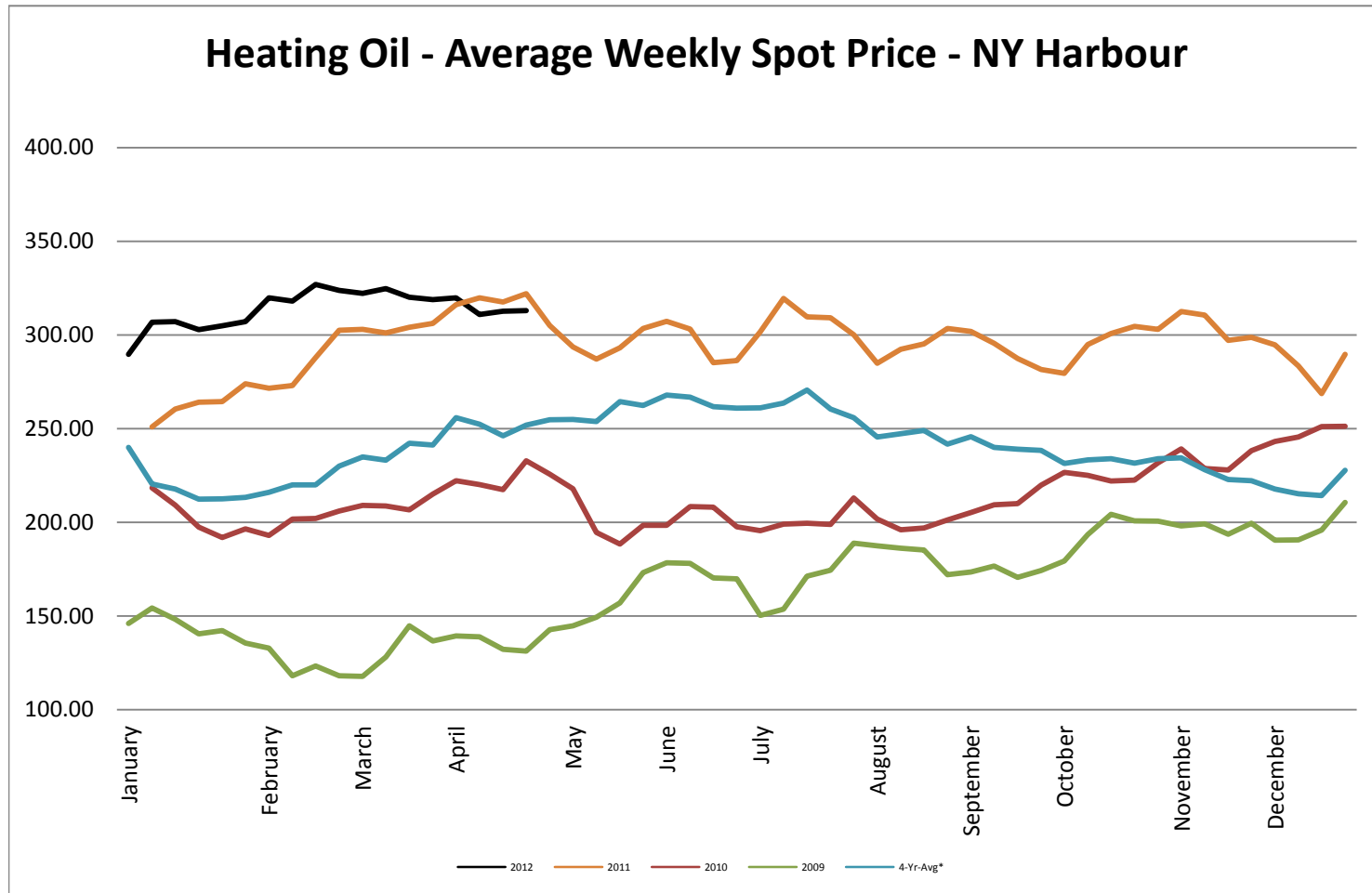


## Crude Oil - Average Weekly Price - NYMEX

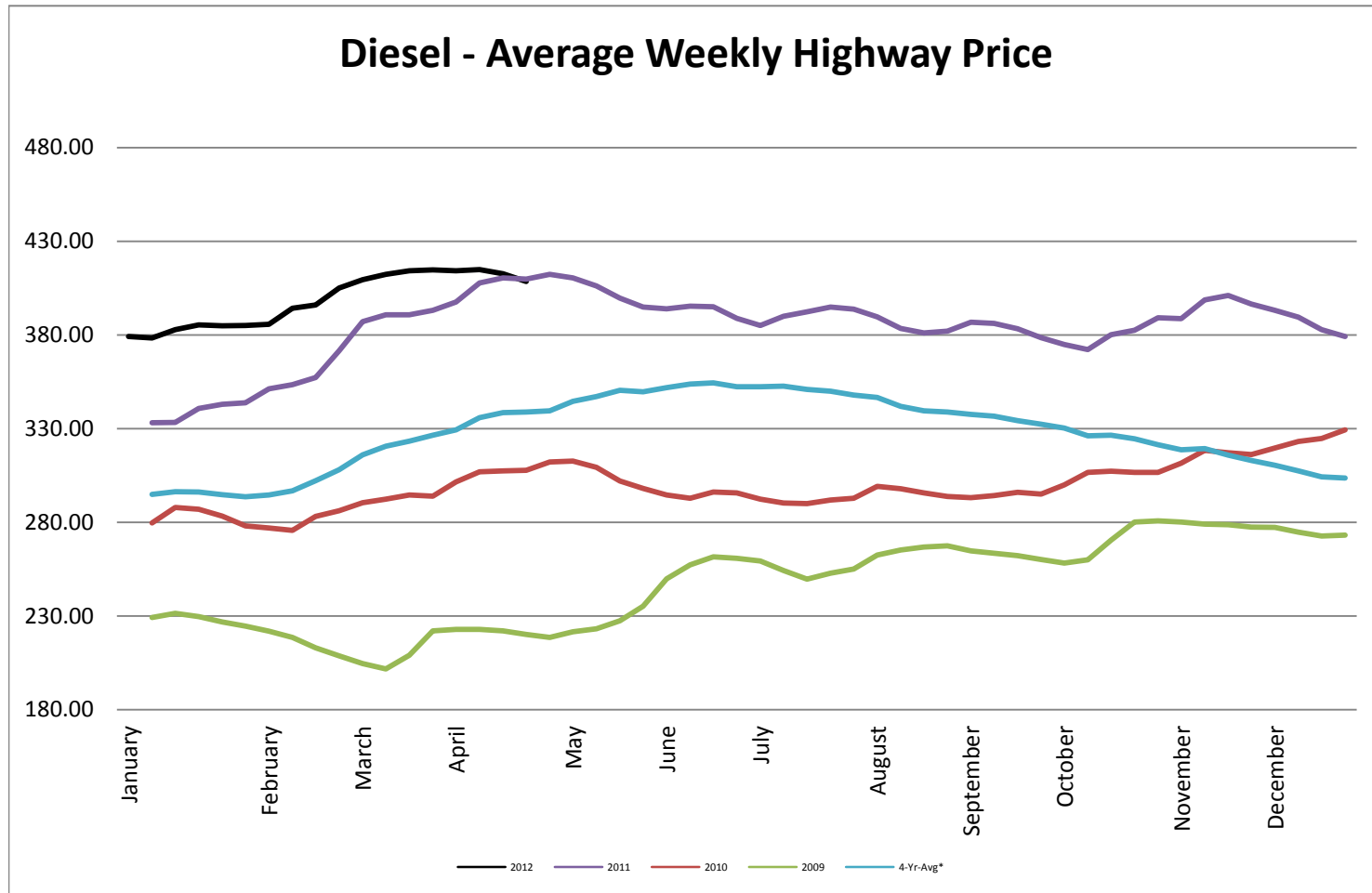




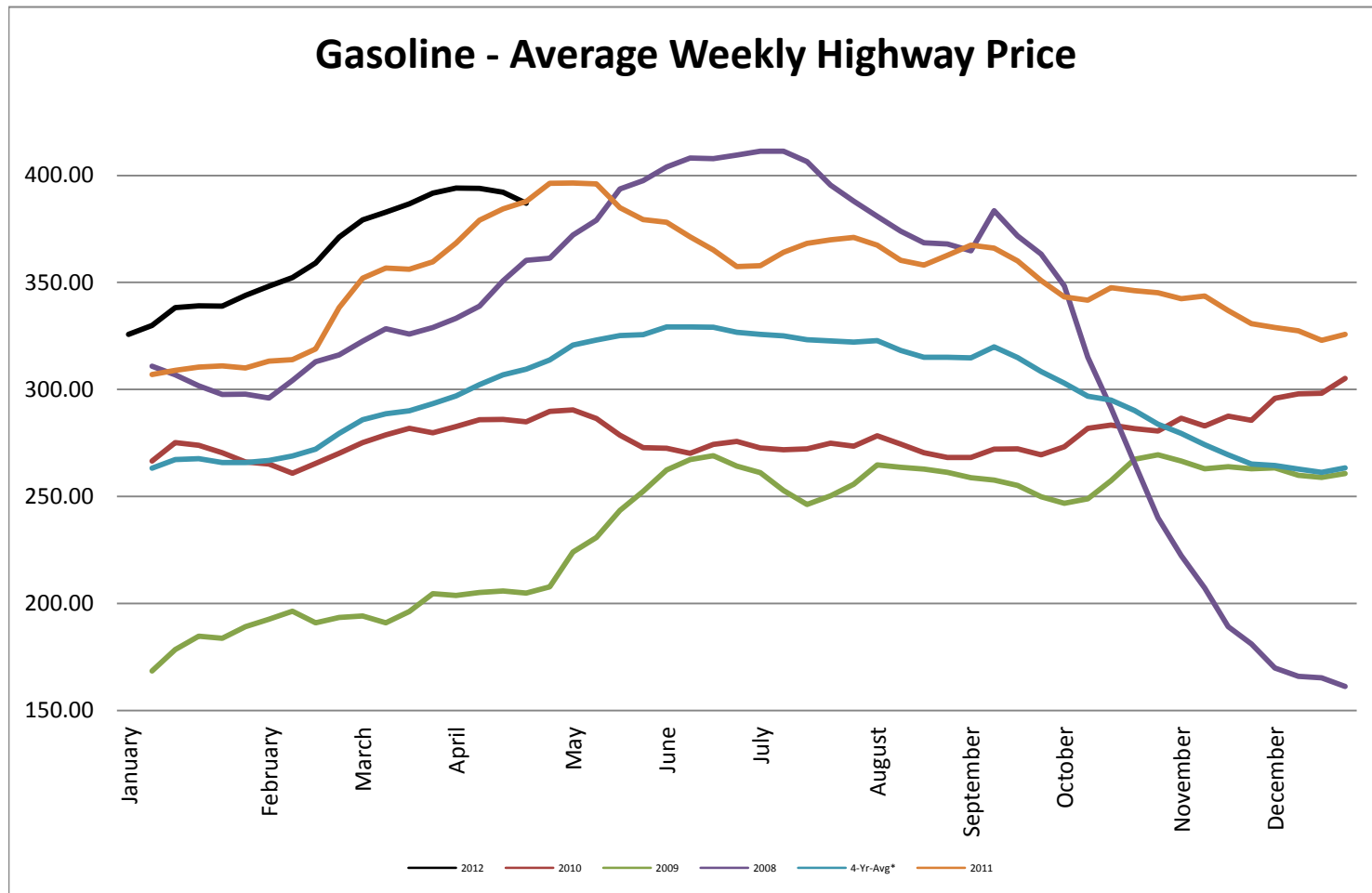
## Heating Oil - Average Weekly Spot Price - NY Harbour



## Diesel - Average Weekly Highway Price



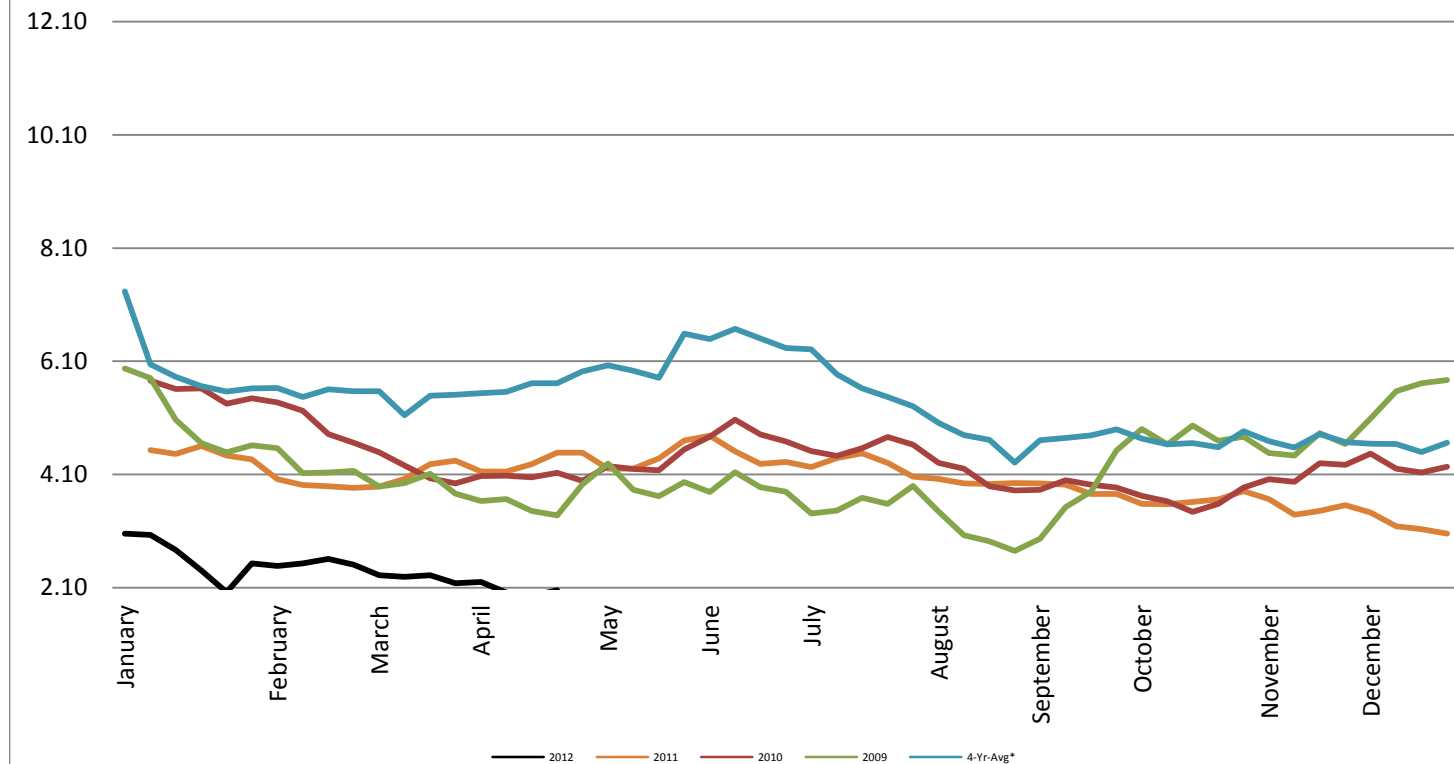
## Gasoline Unleaded - Average Weekly Highway Price



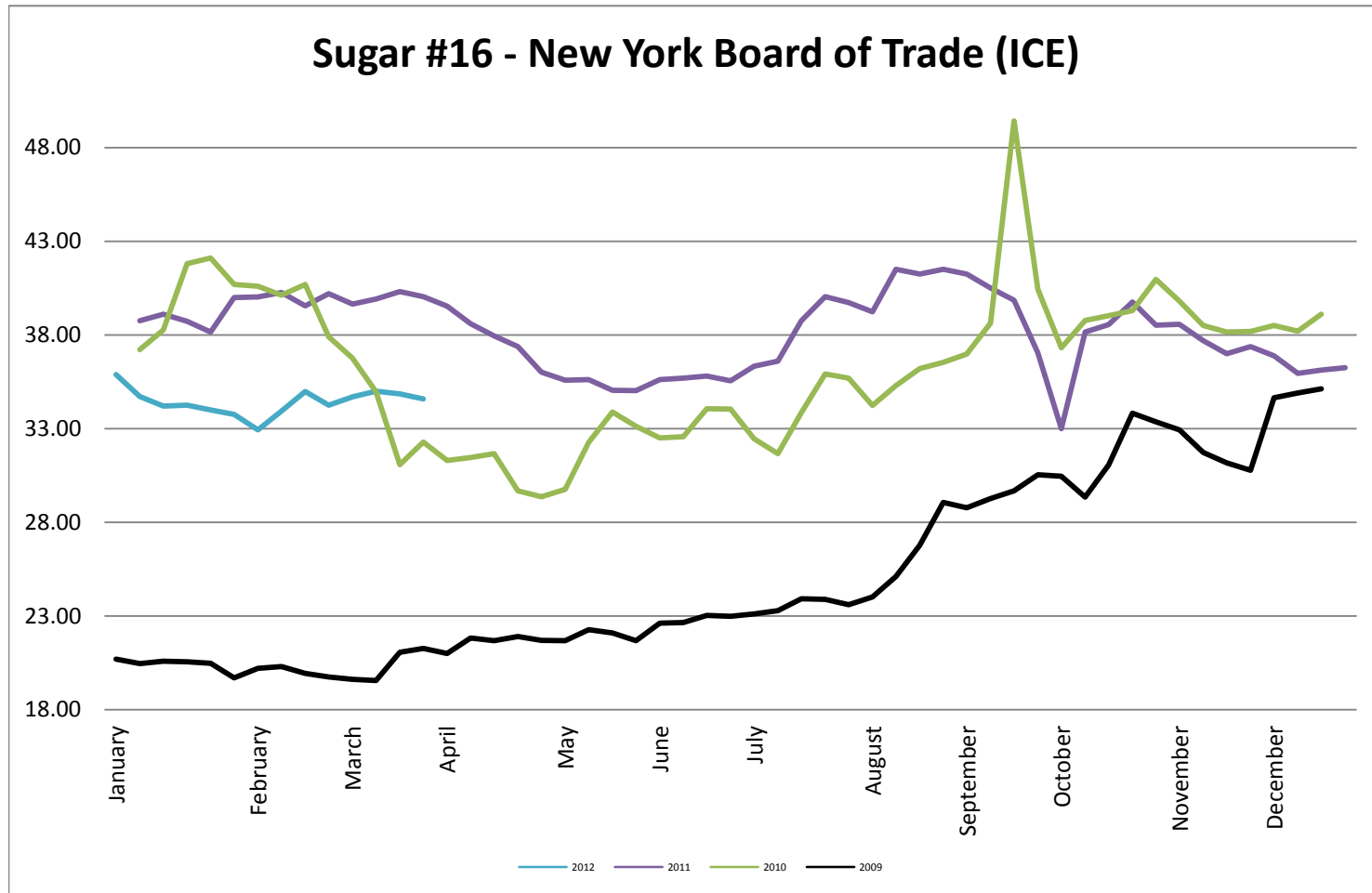


## Natural Gas Futures - New York Mercantile Exchange

### Natural Gas Futures - New York Mercantile Exchange



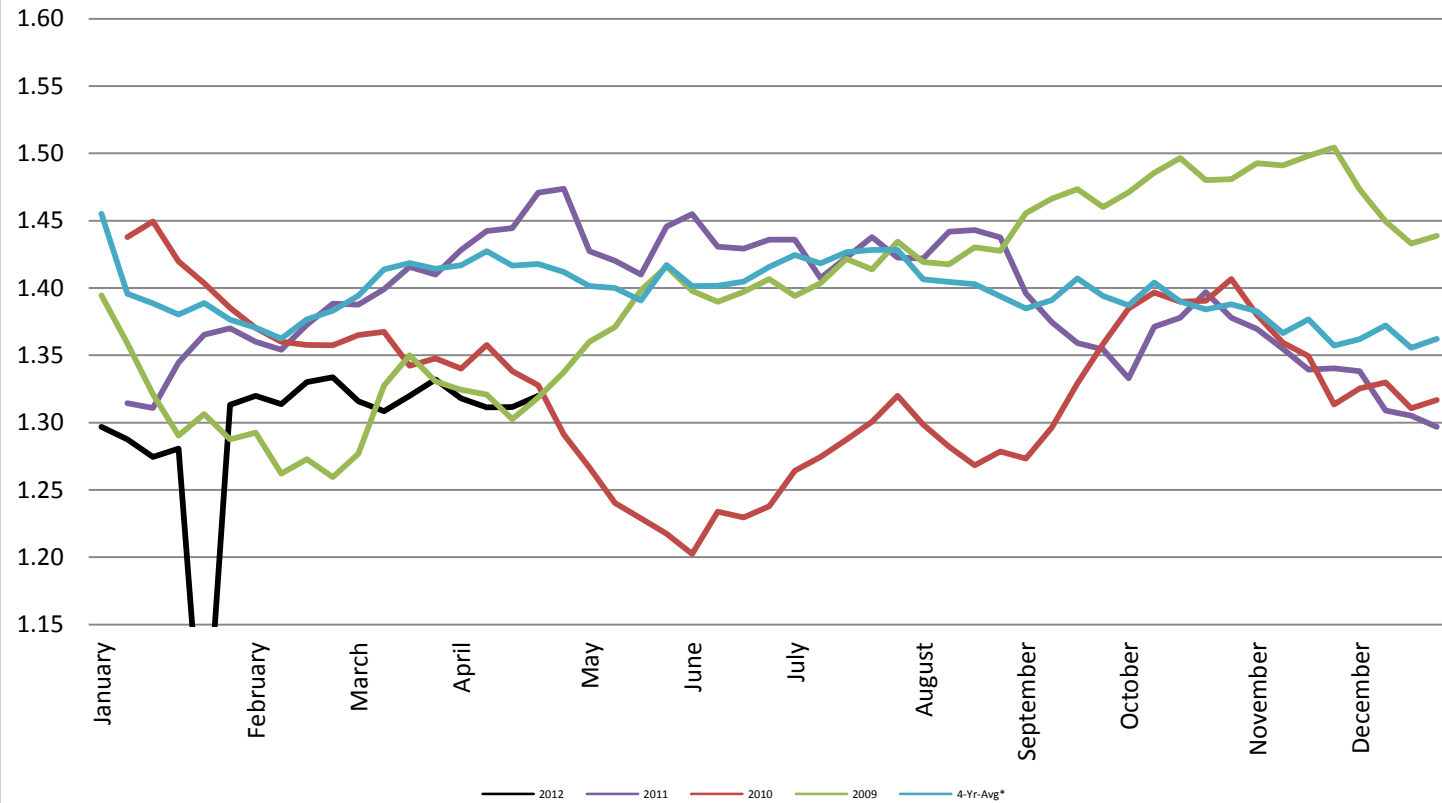
## Sugar #16 - New York Board of Trade (ICE)



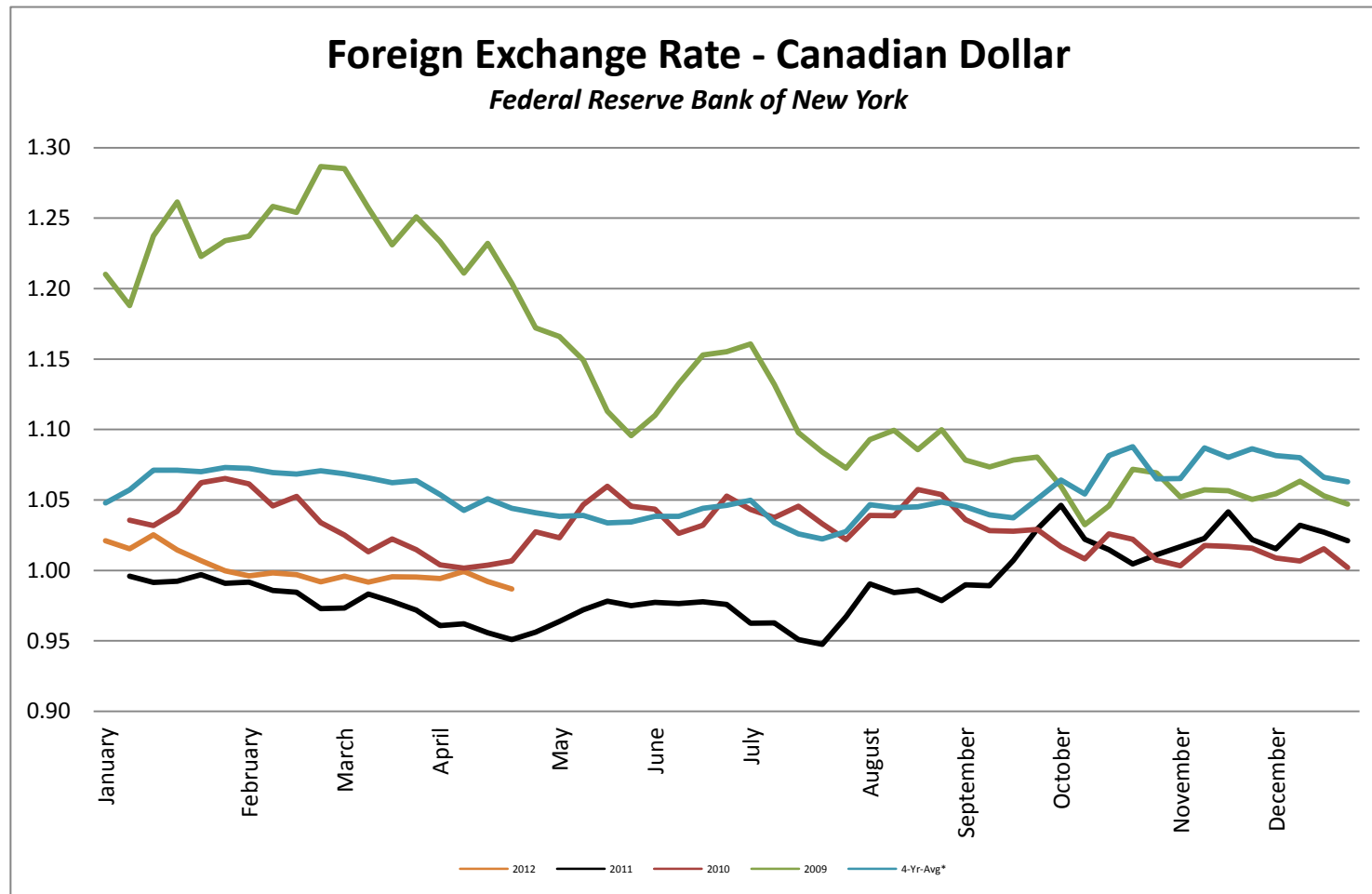
## Foreign Exchange Rate - Euro, EMU Members

### Foreign Exchange Rate - Euro, EMU Members

*Federal Reserve Bank of New York*



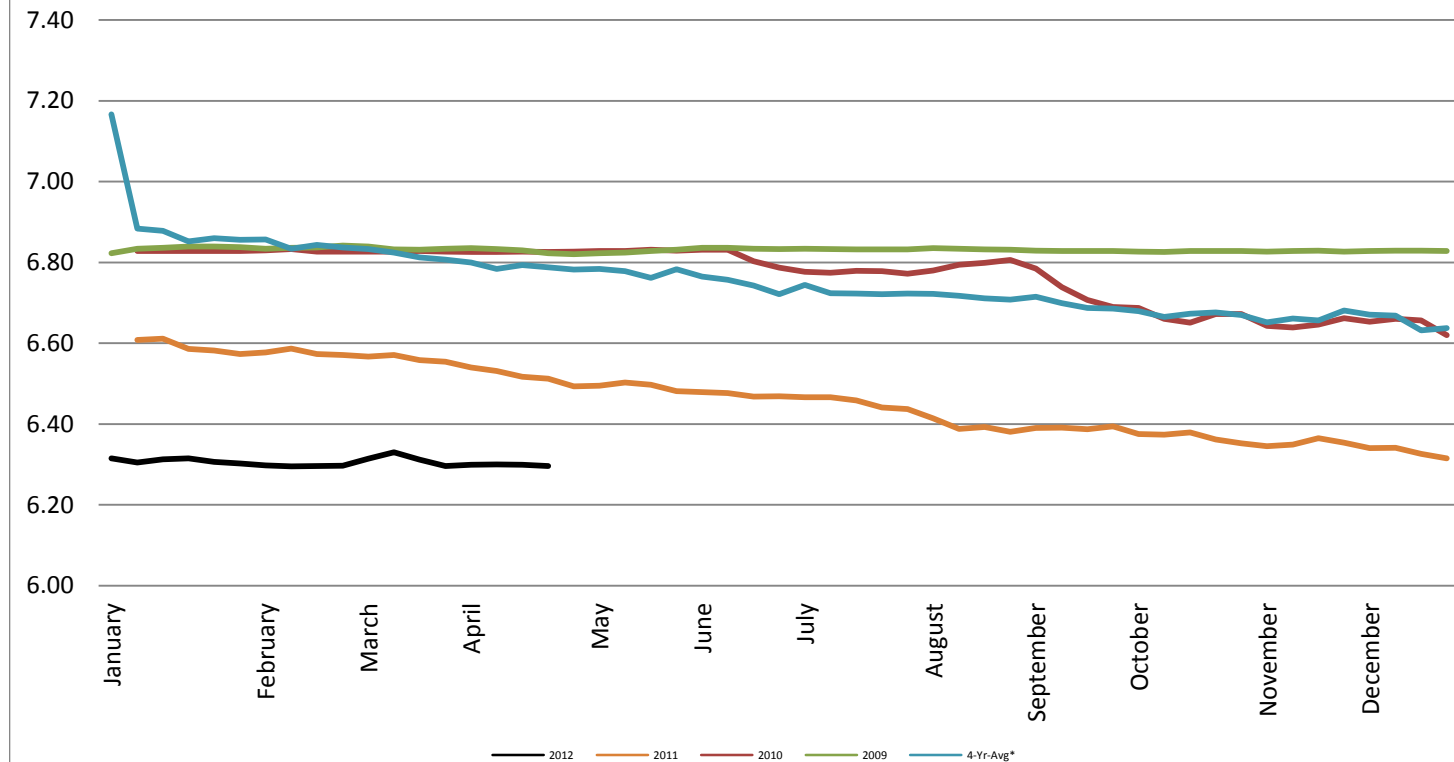
## Foreign Exchange Rate - Canadian Dollar



## Foreign Exchange Rate - Chinese Yuan

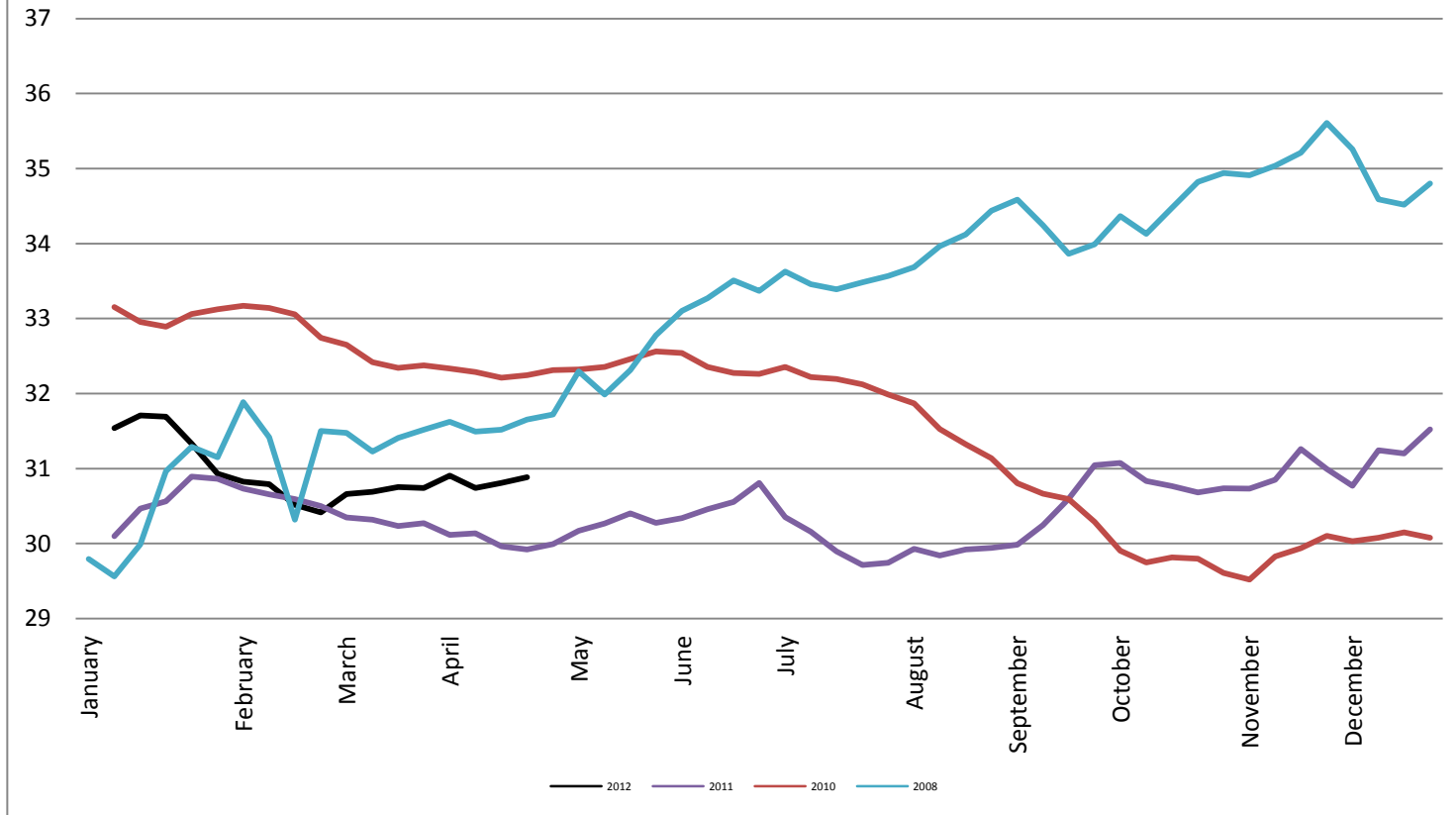
### Foreign Exchange Rate - Chinese Yuan

*Federal Reserve Bank of New York*



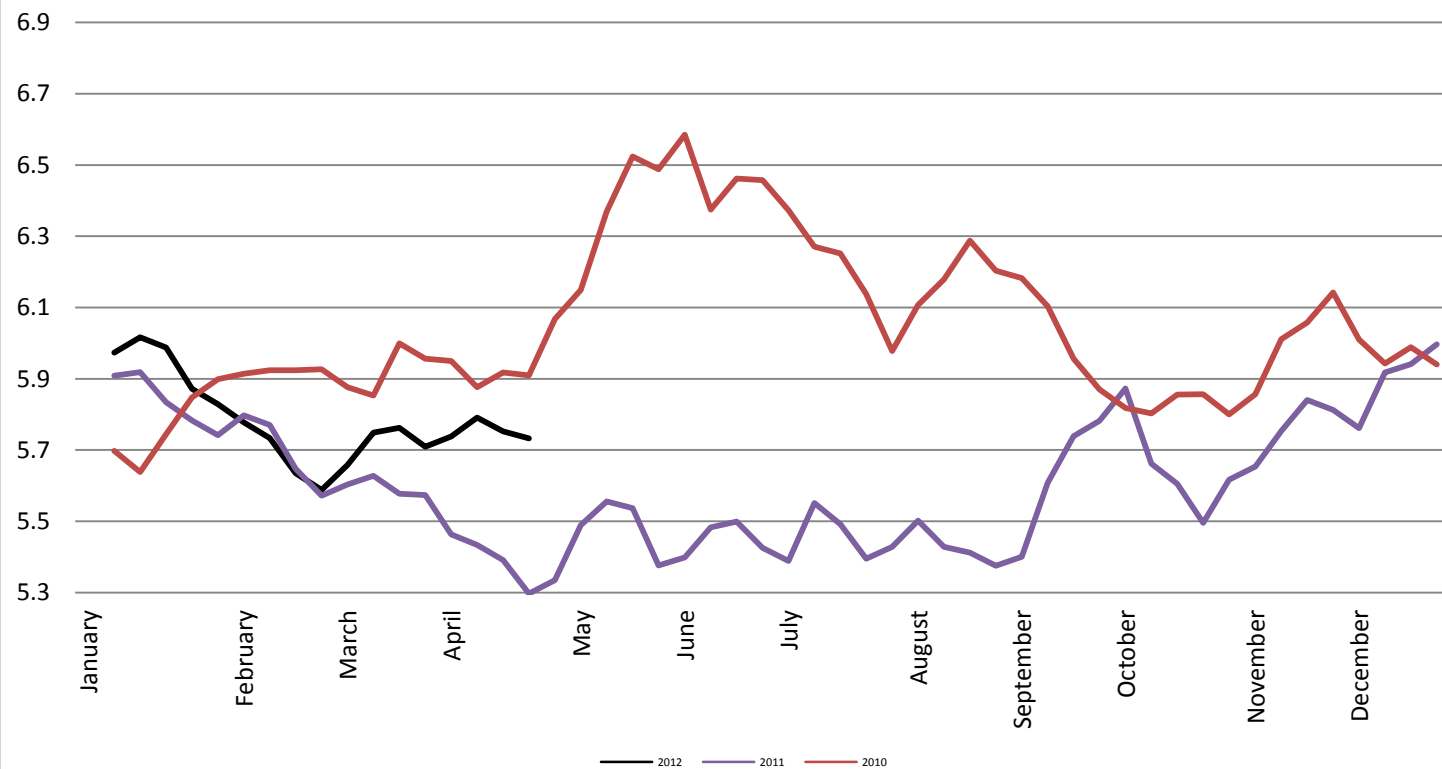
## Foreign Exchange Rate

### Thailand - Baht *Federal Reserve Bank of New York*



## Foreign Exchange Rate

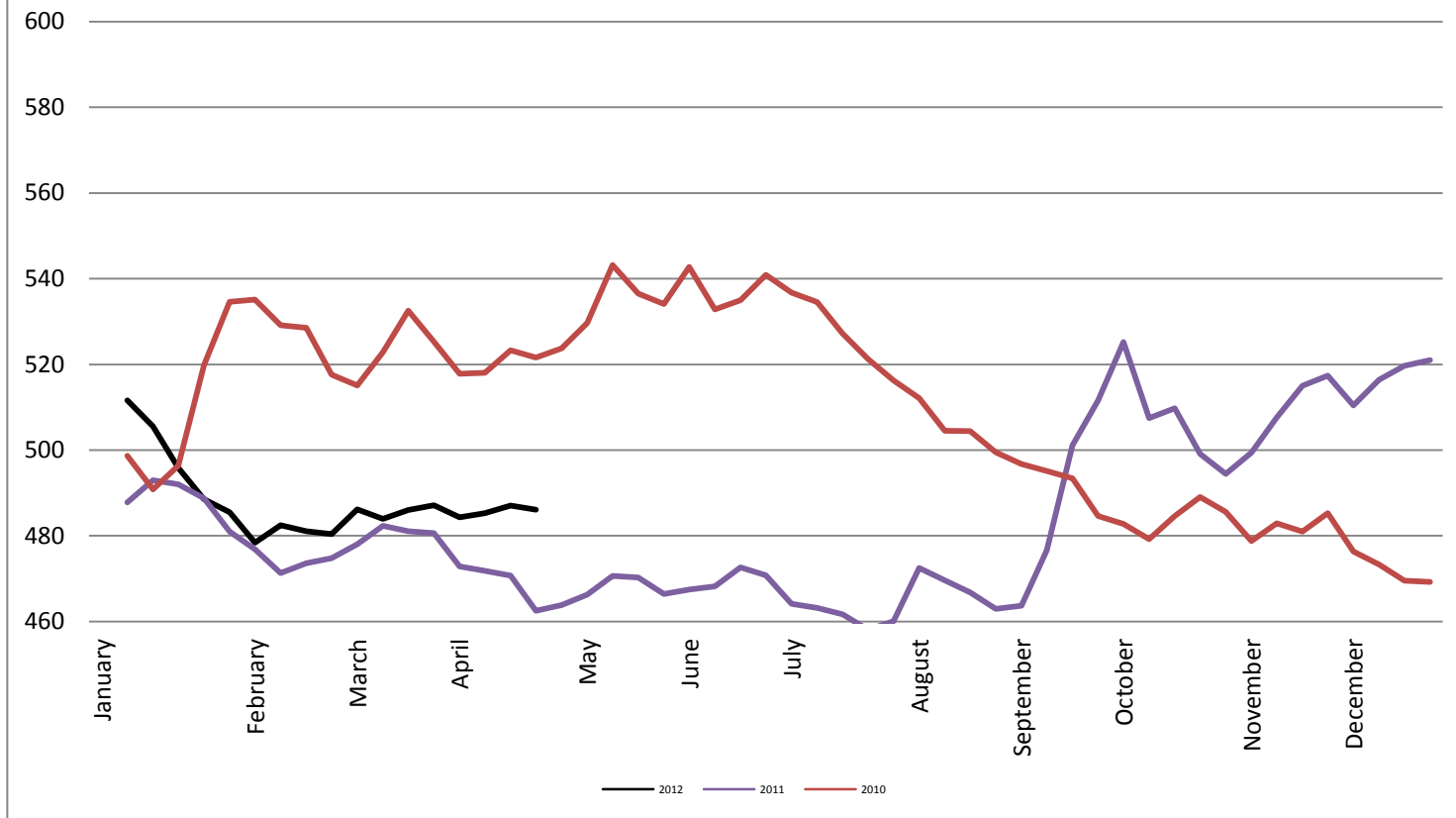
### Nowegian Krone *Federal Reserve Bank of New York*



## Foreign Exchange Rate

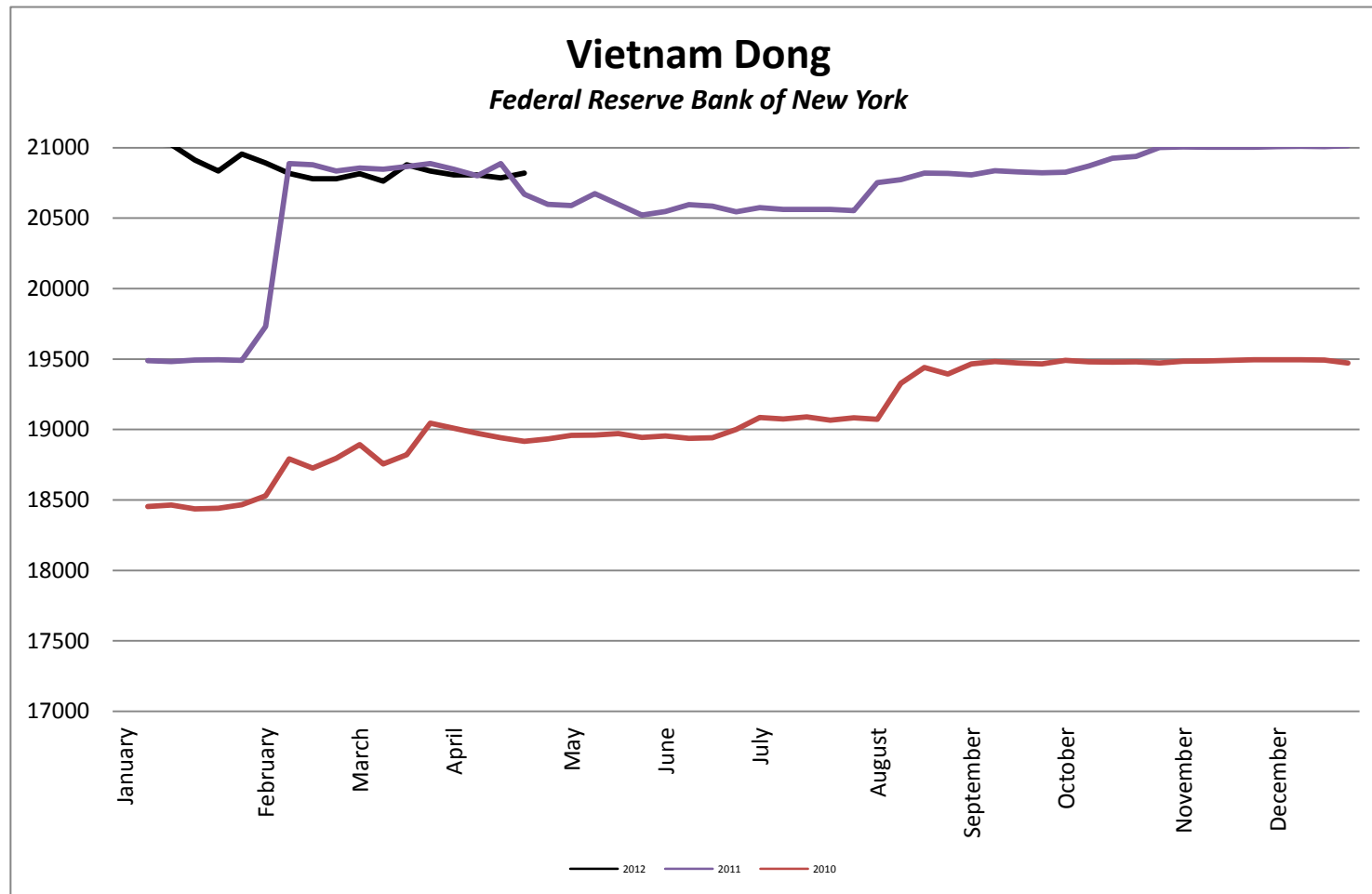
### Chile Peso

*Federal Reserve Bank of New York*

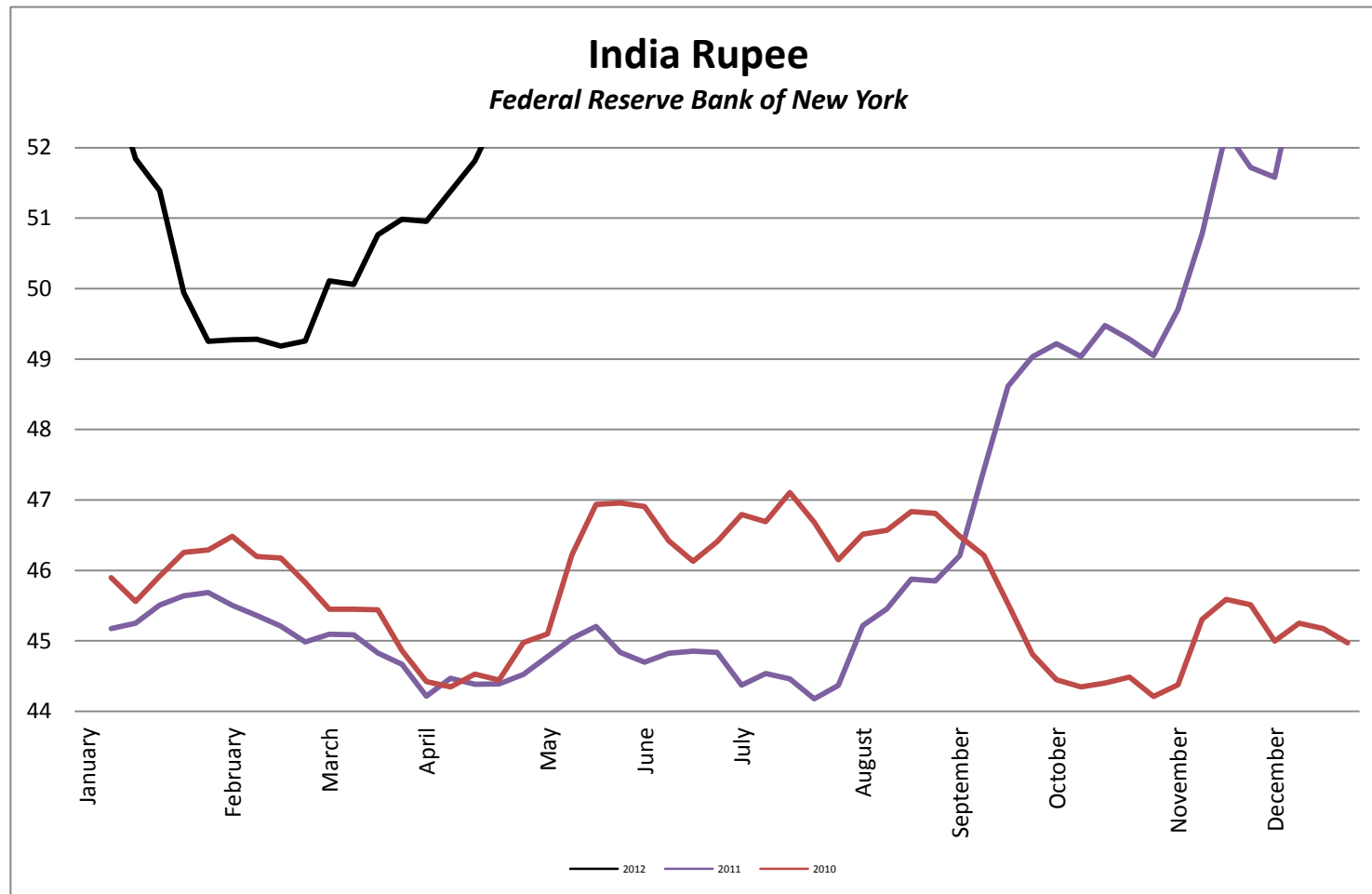




## Foreign Exchange Rate



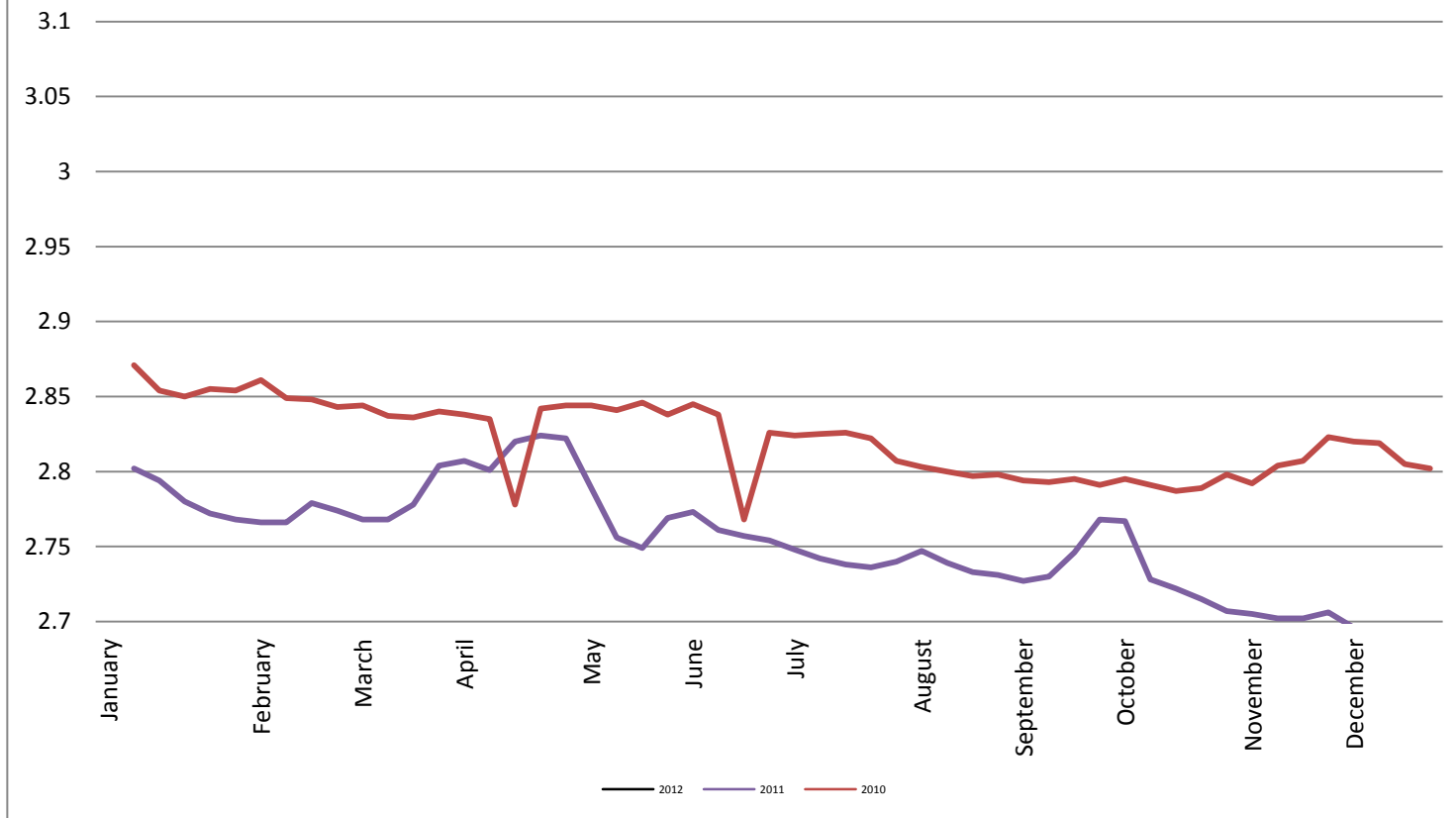
## Foreign Exchange Rate



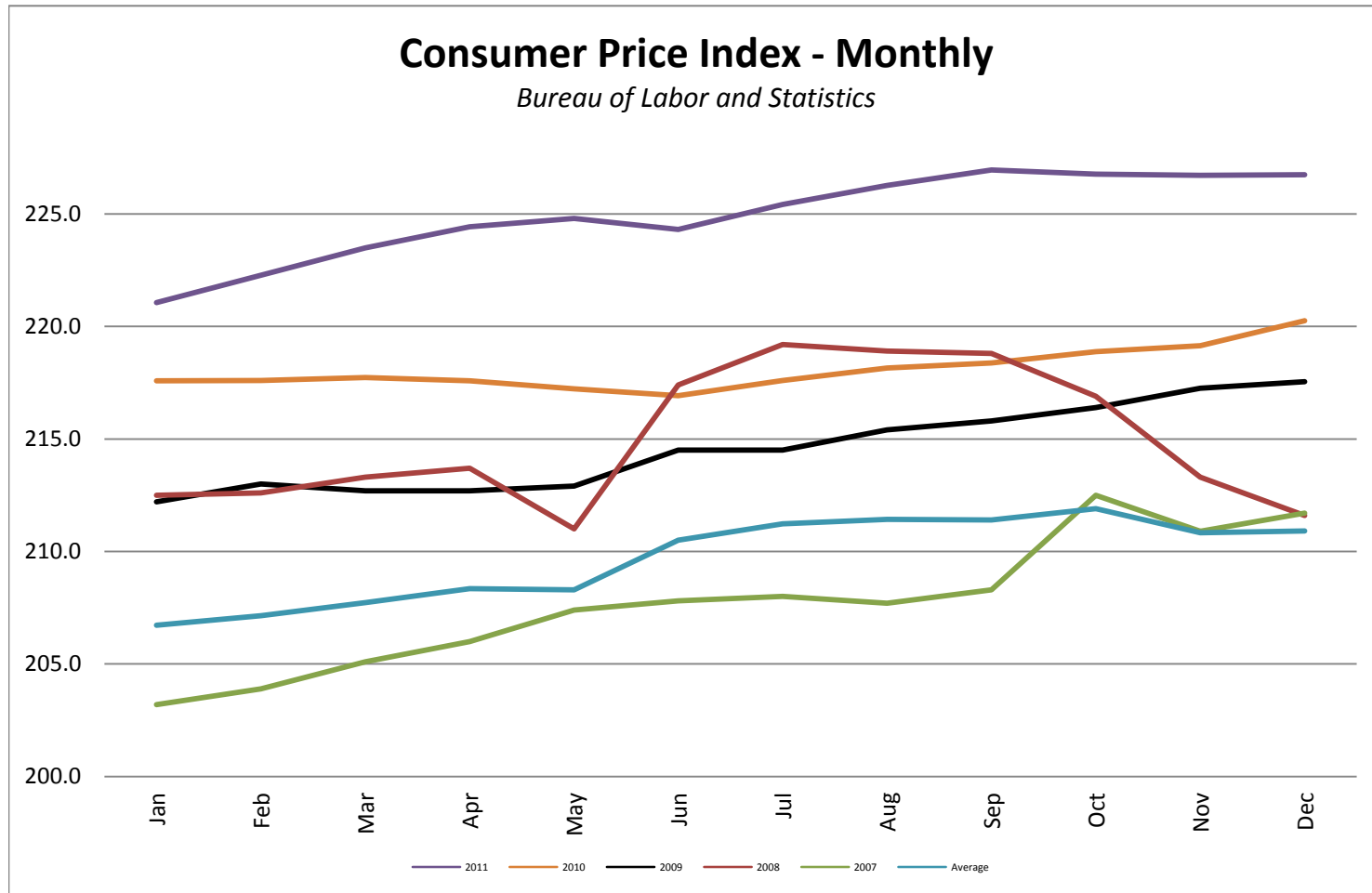
## Foreign Exchange Rate

### Peruvian New Sol

*Federal Reserve Bank of New York*

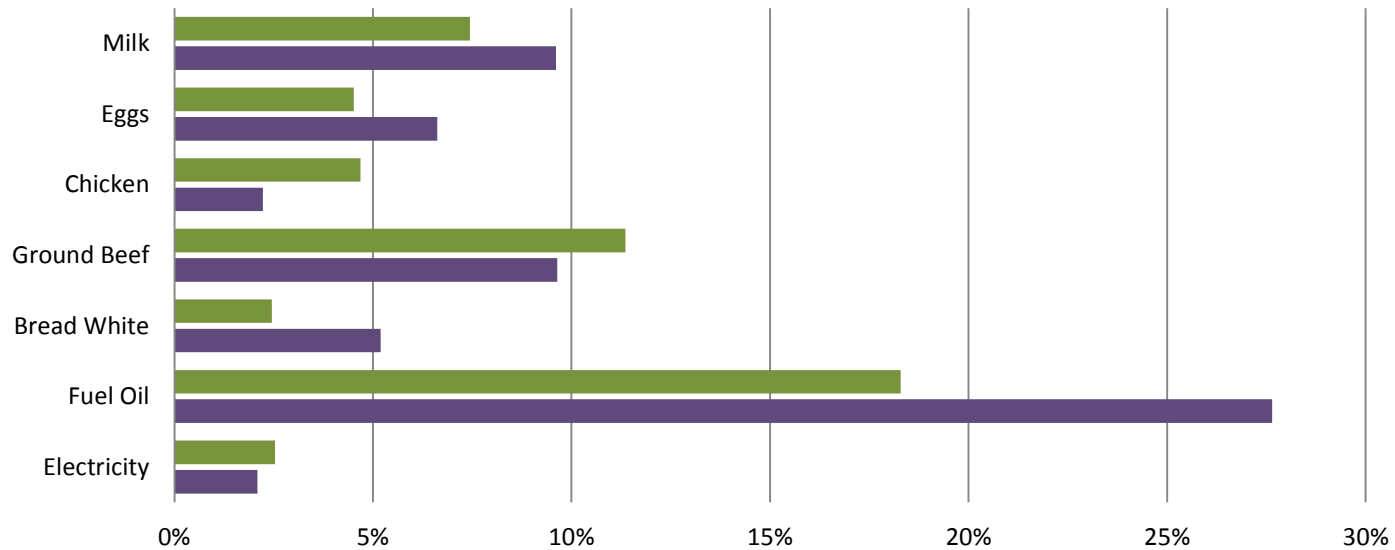


## Consumer Price Index - Monthly



# Consumer Price Index- Growth Percentage

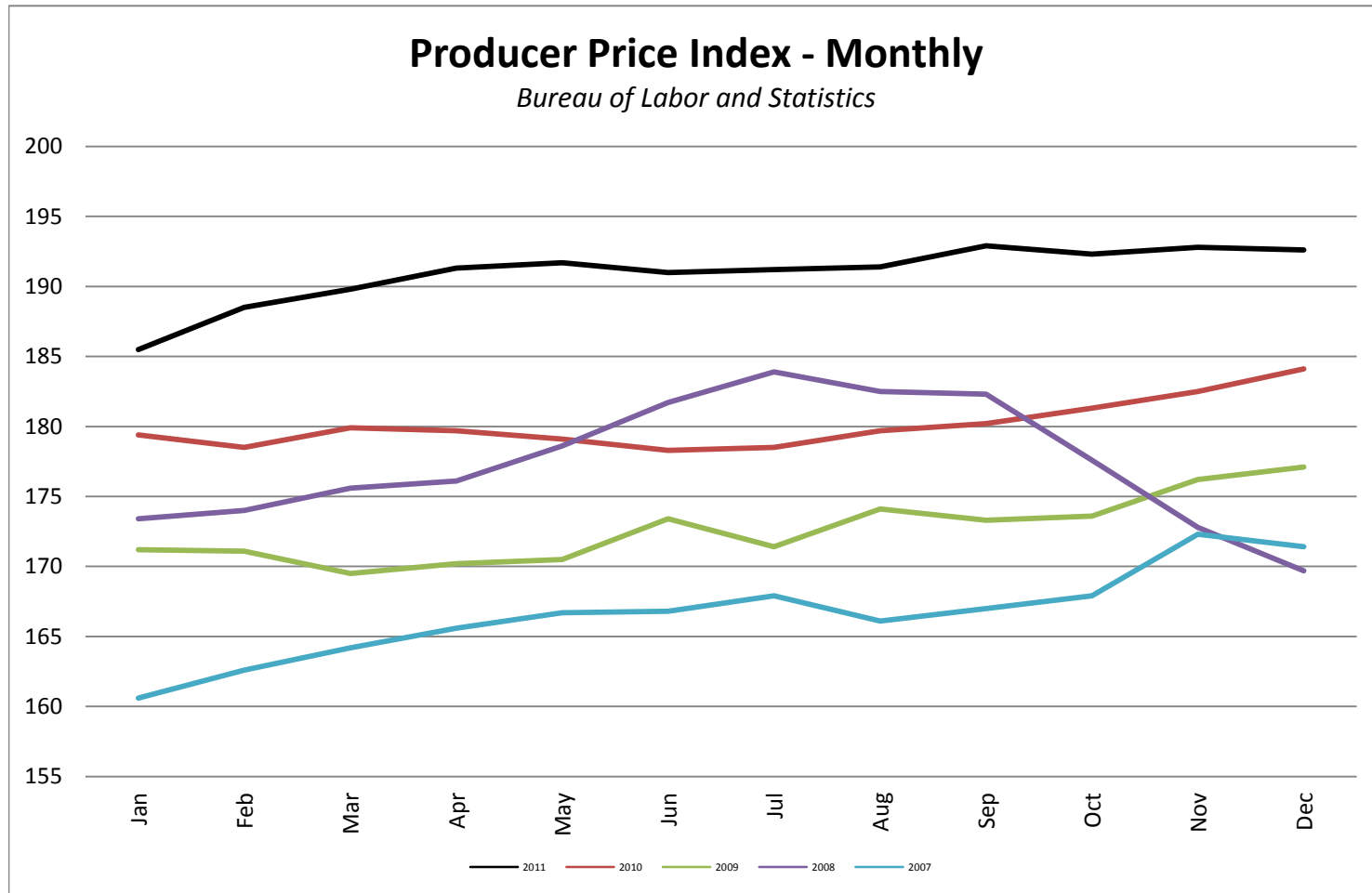
Bureau of Labor & Standards



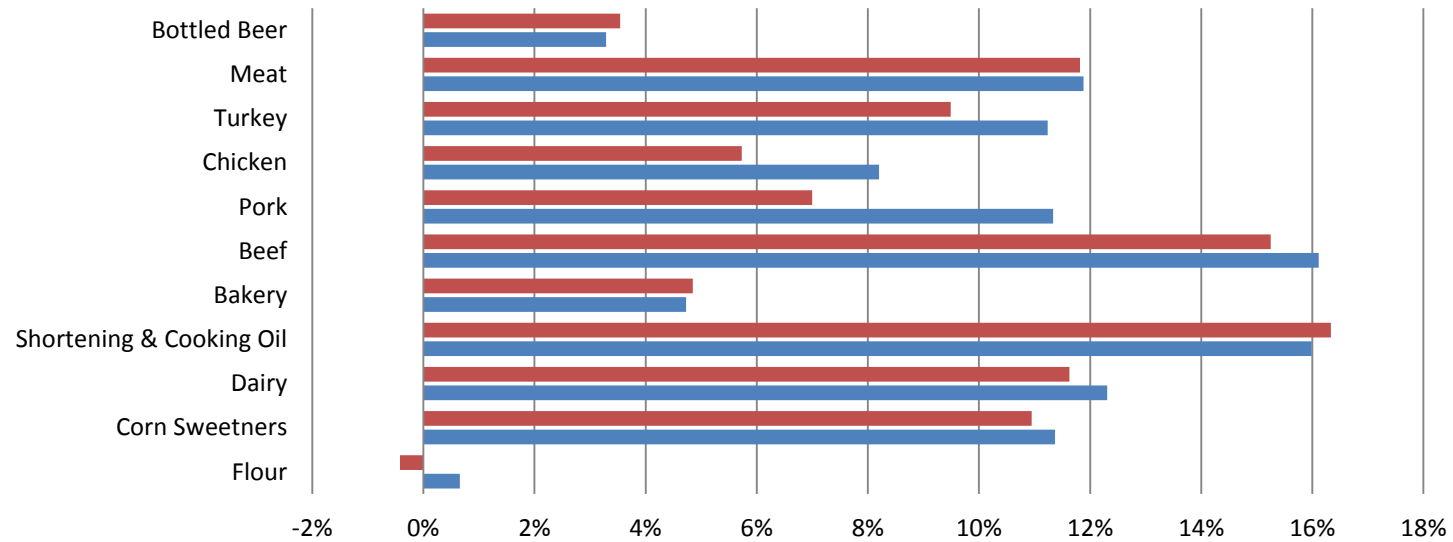
	Electricity	Fuel Oil	Bread White	Ground Beef	Chicken	Eggs	Milk
DEC 11 vs. DEC 10	0.025328244	0.182900094	0.024531025	0.113574352	0.046875	0.045175683	0.074442435
YTD	0.02093795	0.276464221	0.051941748	0.096400402	0.022298456	0.066177947	0.096082042

■ DEC 11 vs. DEC 10 ■ YTD

## Producer Price Index - Monthly



**PPI Commodities - Growth Percentage**  
*Bureau of Labor & Standards*



	Flour	Corn Sweetners	Dairy	Shortening & Cooking Oil	Bakery	Beef	Pork	Chicken	Turkey	Meat	Bottled Beer
DEC 11 vs. DEC 10	-0.004225	0.109465	0.116279	0.163343	0.048484	0.152515	0.07	0.057284	0.094905	0.118176	0.035398
YTD	0.006572	0.113696	0.123085	0.159892	0.047272	0.161163	0.113333	0.082036	0.112351	0.118818	0.032869

■ DEC 11 vs. DEC 10 ■ YTD