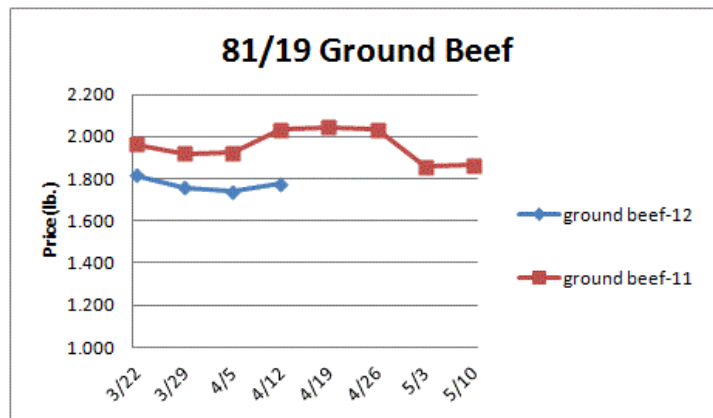


Weekly Market Updates

Volume No. 5 Issue No. 15 Date: April 12, 2012

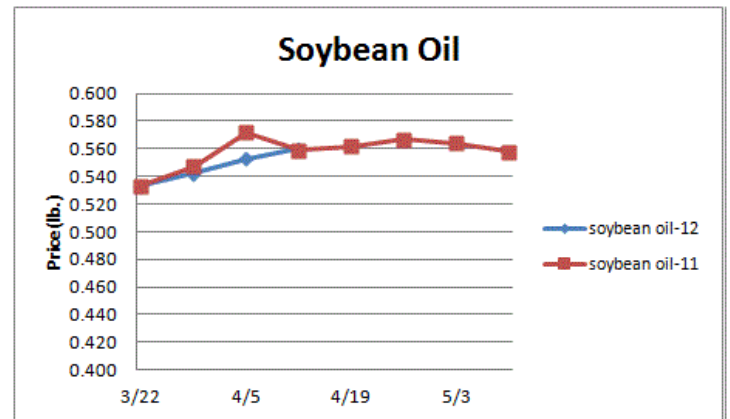
Beef- Beef output last week rose 3.1% and was 2.3% better than '11. Spot cattle prices have finally receded from record levels. This is encouraging US beef production and creating downward pressure on beef prices. However, several beef grilling items such as trimmings, ground beef, and strips typically rise over the next 4 weeks. Still, this year's price increases for the aforementioned beef items is expected to be modest at best. The declining usage of LFTB by beef packers in the US has created a bearish scenario for 50% beef trimmings. However, 90% lean boneless beef trimming supplies could remain limited. Price USDA, FOB per pound.

	Price	Last Week	Difference	Price 11
Live Cattle	1.219	1.239	-.020	1.185
Feeder Cattle Index (CME)	1.498	1.535	-.037	1.361
Ground Beef 81/19	1.775	1.738	+.037	2.032
Ground Chuck	1.777	1.837	-.060	1.981
109e Export Rib (choice)	5.568	5.642	-.074	5.404
109e Export Rib (prime)	10.997	11.548	-.551	7.116
112a Ribeye (choice)	5.803	6.185	-.382	5.894
112a Ribeye (prime)	12.199	12.521	-.322	8.357
116 Chuck (select)	1.956	2.037	-.081	2.099
116 Chuck (choice)	1.942	1.999	-.057	2.119
116b Chuck Tdnr (choice)	1.989	2.219	-.230	2.129
120 Brisket (choice)	1.788	2.002	-.214	1.721
121c Outside Skirt (ch/sel)	5.156	5.474	-.318	3.575
121d Inside Skirt (ch/sel)	3.466	3.579	-.113	3.527
167a Knuckle, Trm. (ch.)	2.120	2.184	-.064	2.193
168 Inside Round (ch.)	1.936	1.953	-.017	2.175
174 Short Loin (ch. 0x1)	5.215	5.270	-.055	5.865
174 Short Loin (prime)	9.657	10.361	-.704	7.559
180 1x1 Strp (choice)	4.635	4.565	+.070	5.420
180 1x1 Strp (prime)	11.174	11.439	-.265	7.670
180 0x1 Strp (choice)	5.262	5.106	+.156	5.904
184 Top Butt, bnls (ch.)	3.029	3.098	-.069	2.863
184 Top Butt, bnls (prime)	3.584	3.530	+.064	2.862
185a Sirloin Flap (choice)	3.725	3.822	-.097	3.620
185c Loin, Tri-Tip (choice)	3.171	3.285	-.114	2.768
189a Tender (select)	9.263	9.167	+.096	8.210
189a Tender (choice)	9.087	9.581	-.494	8.559
189a Tender (prime)	14.282	15.376	-1.094	10.853
193 Flank Steak (choice)	4.224	4.284	-.060	3.949
50% Trimmings	.572	.767	-.195	1.034
65% Trimmings	.997	1.318	-.321	1.228
75% Trimmings	1.725	1.725	-	1.528
85% Trimmings	2.071	2.038	+.033	1.932
90% Trimmings	2.209	2.188	+.021	2.031
90% Imported Beef (frz.)	2.120	2.135	-.015	2.080
95% Imported Beef (frz.)	2.260	2.275	-.015	2.190
Veal Rack (Hotel 7 rib)	7.700	7.650	+.050	5.450
Veal Top Rnd. (cp. off)	14.100	14.100	-	12.500



Oil, Grains, Misc.- The latest USDA Supply and Demand report still shows corn supplies historically limited. The corn market is expected to remain firm into the summer months. Prices USDA, FOB.

	Price	Last Week	Difference	Price 11
Soybeans, bushel	14.207	14.140	+.067	13.134
Crude Soybean Oil, lb.	.560	.553	+.007	.559
Soybean Meal, ton	383.800	385.200	-1.400	324.900
Corn, bushel	6.370	6.554	-.184	7.298
Crude Corn Oil, lb.	.605	.605	-	.680
High Fructose Corn Syrup	.180	.185	-.005	.200
Distillers Grain, Dry	208.000	202.500	+.055	211.750
Crude Palm Oil, lb. BMD	.538	.533	+.005	.514
HRW Wheat, bushel	6.140	6.630	+.110	8.165
DNS Wheat 14%, bushel	9.030	9.190	-.160	9.710
Durum Wheat, bushel	8.263	8.325	-.062	8.430
Pinto Beans, lb.	.494	.494	-	.282
Black Beans, lb.	.410	.410	-	.325
Rice, Long Grain, lb.	.248	.251	-.003	.255
Coffee, lb. NYBOT	1.803	1.853	-.050	2.746
Sugar, lb. NYBOT	.330	.342	-.012	.385
Honey (Clover), lb.	1.750	1.750	-	1.625

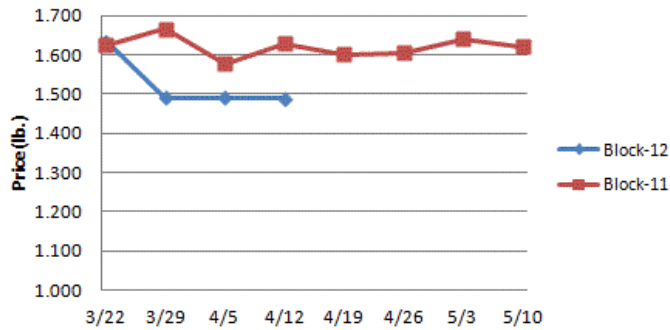


Dairy- The CME cheese markets are relatively quiet. The downside risk in cheese from here may only be moderate. Since '07 the CME cheese block market during the next 5 weeks moved an average of 3.4% higher. The butter markets remain bearish due in part to healthy butter supplies in place. Still, the downside risk for butter from current levels is probably limited. Since '07, the CME butter market over the next 5 weeks moved up an average of 5.3%. Milk output is likely to run at a record pace this spring. If dairy farmer margins remain poor, output may be tempered this summer. Prices per pound, except Class I Cream (hundred weight), from USDA.

	Price	Last Week	Difference	Price 11
Cheese Barrels (CME)	1.460	1.463	-.003	1.598
Cheese Blocks (CME)	1.488	1.490	-.002	1.628
American Cheese	1.655	1.775	-.120	1.890
Cheddar Cheese (40 lb.)	1.880	1.980	-.100	2.090
Mozzarella Cheese	1.725	1.825	-.100	1.923
Provolone Cheese	2.075	2.175	-.100	2.080
Parmesan Cheese	3.155	3.255	-.100	3.155
Butter (CME)	1.425	1.455	-.030	2.000
Nonfat Dry Milk	1.305	1.299	+.006	1.644
Whey, Dry	.521	.531	-.010	.490
Class I Base	15.660	15.660	-	19.430
Class II Cream, heavy	1.680	1.903	-.223	2.494
Class III Milk (CME)	14.850	15.620	-.770	17.080
Class IV Milk (CME)	14.800	14.800	-	19.750

Weekly Market Updates

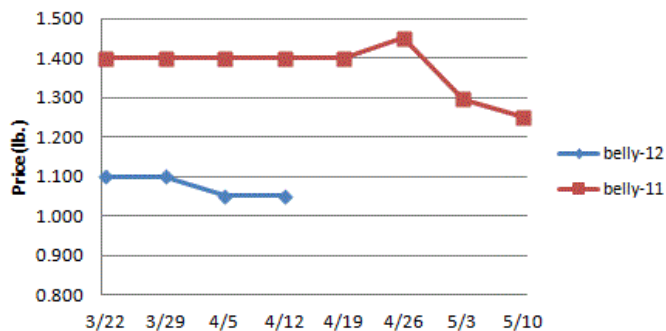
Cheese Block (CME)



Pork- Pork output last week increased .6% and was 3.5% larger than '11. Last week's USDA pork cutout value was the lowest for the date in 3 years. This was due in part to strong pork production rates occurring this year. The LFTB beef situation is negatively impacting US pork trimming prices. History shows price action similarities between the 50% beef trim and the pork trim markets. In '12, 50% beef trim prices have declined 24% while pork trim prices have fallen 27%. Still, pork prices are expected to seasonally rise soon. Prices USDA, FOB per pound.

	Price	Last Week	Difference	Price 11
Live Hogs	.585	.581	+.004	.675
Belly (bacon)	1.050	1.050	-	1.400
Sparerib (4.25 lb. & down)	1.537	1.600	-.063	1.620
Ham (20-23 lb.)	.620	.620	-	.745
Ham (23-27 lb.)	.615	.620	-.005	.736
Loin (bone-in)	.939	.976	-.037	1.037
Bbybck Rib (1.75 lb. & up)	2.952	2.930	+.022	2.850
Tenderloin (1.25 lb.)	2.723	2.670	+.053	2.690
Boston Butt, untrmd. (4-8 lb.)	.933	.911	+.022	1.057
Picnic, untrmd.	.468	.522	-.054	.732
SS Picnic, smoker trm. bx.	.750	.737	+.013	.980
42% Trimmings	.364	.310	+.054	.600
72% Trimmings	.477	.495	-.018	.860

Pork Belly



Tomato Products, Canned- The CA tomato crops designated for tomato processors have had some weather challenges. The canned tomato markets could firm. Prices per case (6/10) FOB, unless noted from ARA.

	Price	Last Week	Difference	Price 11
Whole Peeled, Standard	12.250	12.250	-	11.750
Diced, Fancy	12.750	12.750	-	12.250
Ketchup, 33%	13.438	13.438	-	13.000
Tomato Paste- Industrial (lb.)	.398	.398	-	.390

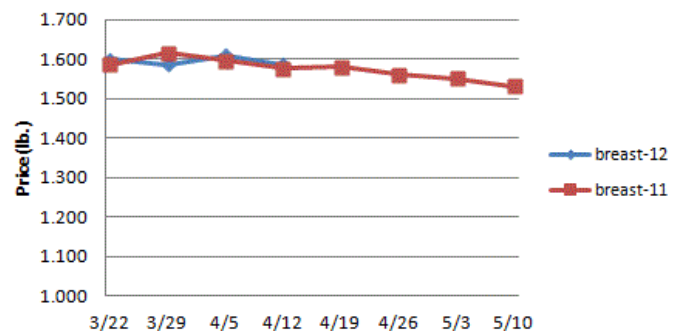
Processed Vegetables- The markets are steady. Processed vegetable supplies could tighten this fall if new crop planted acreage isn't sufficient. Processed vegetable prices may firm. Prices FOB per case from ARA.

	Price	Last Week	Difference	Price 11
Corn, Fcy whl kern- can 6/10	18.651	18.651	-	17.406
Green Beans Fcy- can 6/10	18.250	18.250	-	17.000
Green Peas, Fcy- can 6/10	18.750	18.750	-	17.750
Corn, Cob- froz 96 ct.	14.750	14.750	-	14.000
Corn, Kernel- froz 12/2.5#	16.500	16.500	-	14.250
Green Beans Cut- froz 12/2#	12.900	12.900	-	12.900
Green Peas- froz 12/2.5#	20.250	20.250	-	20.250
Potatoes, FF Fncy- froz 6/5#	14.000	14.000	-	13.000

Poultry- Chicken producers are still facing poor spot profit margins and continue to limit chicken output. The 6 week moving average for broiler type egg sets is trending 5.2% below last year and 4.3% below the same period in '10. This remains supportive of the chicken markets. Some chicken markets typically rise during Apr and May with history showing increases for chicken breasts at 4% and chicken leg quarters at 13%. This year's expected price appreciation for breasts may be tempered however due to improving breast meat yields. The chicken leg quarter market is likely to achieve record high levels soon. History points to lower chicken wing prices (9%) in Apr and May but any decline this year may only be modest. Prices USDA, FOB per pound except when noted.

Chicken	Price	Last Week	Difference	Price 11
Whole Birds (2.5-3 lb.-GA)	.933	.933	-	.865
Whole Birds (LA)	1.020	1.020	-	.950
Wings (whole)	1.890	1.885	+.005	.840
Wings (jumbo, cut)	1.792	1.822	-.003	1.136
Breast, Bone In	1.005	1.005	-	.925
Breast, Bnless Skinless	1.585	1.610	-.025	1.575
Tenderloin (random)	1.540	1.540	-	1.480
Tenderloin (sized)	2.270	2.270	-	2.230
Legs (whole)	.715	.730	-.015	.703
Leg Quarters	.540	.540	-	.465
Thighs, bone in	.750	.833	-.083	.679
Thighs, boneless	1.371	1.354	+.017	1.270
Eggs and Others				
Large (dozen)	1.117	1.243	-.126	1.130
Medium (dozen)	.838	.973	-.135	.988
Whole Eggs- Liquid	.516	.623	-.107	.570
Egg Whites- Liquid	.508	.519	-.011	.685
Egg Yolks- Liquid	.704	.704	-	.697
Whole Turkeys (8-16 lb.)	1.080	1.075	+.005	.990
Turkey Breast, Bnls/Sknl	2.003	2.037	-.034	2.502

Boneless Skinless Chicken Breast

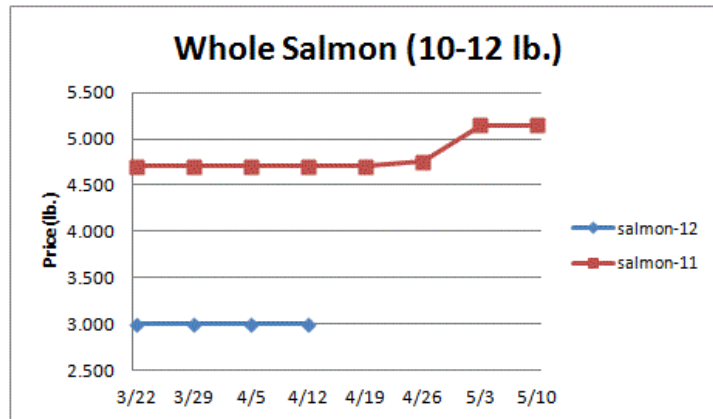


Seafood- Chilean farmed salmon production is up this past year and has recovered nicely from the ISA disease outbreak in Chile just a few years ago. Norway, another salmon producer is expected to increase sales to the US after a 20 year import tax recently expired. Thus, better US salmon supplies and possibly lower salmon prices are expected this year. Whole Salmon prices are currently 23% below their 3 year price average.

Weekly Market Updates

Prices for fresh product, unless noted, per pound from Fisheries Market News.

	Price	Last Week	Difference	Price 11
Salmon (wh. Atl., 10-12 lb.)	3.000	3.000	-	4.700
Catfish Filets	5.400	5.400	-	4.750
Trout (dm. 8-14 oz.)	3.500	3.500	-	3.300
Shrimp (16/20), Frz	5.773	5.977	-.204	7.377
Shrimp (61/70), Frz.	3.250	3.088	+.162	3.300
Shrimp, Tiger (26/30), Frz.	4.817	4.850	-.033	4.567
Snow Crab, Legs 5-8 oz, Frz	5.375	5.750	-.375	5.800
Snow Crab, Legs 8 oz/ up, Fz	5.763	5.913	-.150	6.050
Cod Tails, 3-7 oz., Frz.	3.488	3.488	-	3.163
Cod Loins, 3-12 oz., Frz	3.600	3.600	-	3.831
Salmon Portions, 4-8 oz, Frz	5.767	5.808	-.041	7.388
Pollock, Alaska, Deep Skin	1.775	1.775	-	1.925



Energy & Currency-Currency US dollar is worth.

	Price	Last Week	Difference	Price 11
Crude Oil, barrel- nymex	101.020	105.230	-4.210	106.250
Natural Gas, mbtu- nymex	2.031	2.152	-.121	4.098
Heating Oil, gal- nymex	3.096	3.250	-.154	3.173
Electricity, mwht- nymex	35.940	29.890	+6.050	46.390
Gasoline, gal- nymex	3.250	3.382	-.132	3.164
Diesel Fuel, gal- eia	4.148	4.142	+.006	4.078
Ethanol, gal- usda	2.185	2.165	+.020	2.620
Canadian \$.995	.999	+.004	.958
Japanese Yen	81.196	82.551	-1.355	84.223
Mexican Peso	13.015	12.782	+.233	11.770
Euro	.763	.751	+.012	.691
Brazilian Real	1.818	1.827	-.009	1.580
Chinese Yuan	6.311	6.294	+.017	6.540

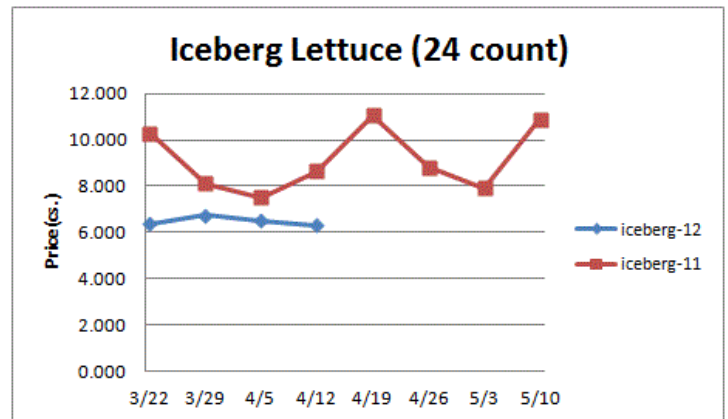
Paper/Plastic-Provided by; resin- www.plasticsnews.com, pulp- www.paperage.com.

Wood Pulp/ Plastic Resin	Price	Last Week	Difference	Price 11
WP; NBSK (napkin, towel)	895.120	870.000	+25.120	1013.430
WP; 42 lb. Linerboard (corr.)	678.924	690.018	-11.094	861.711
Res; PS-CHH (cup, cont.)	1.150-1.190	1.150-1.190	-	1.0301.070
Res; PP-HIGP (hvy utensil)	1.160-1.180	1.160-1.180	-	1.1001.120
Res; PE-LLD (cn liner, film)	.940-.970	.940-.970	-	.880-.810

Produce- The chief lettuce harvest will be transitioning from Huron to Salinas CA in the coming weeks which could bring some volatility to lettuce prices. The lettuce markets are currently steady and are 35% below the 3 year average. Still, history points to higher lettuce prices later this month. Tomato supplies are in excellent shape due in a large part to favorable weather conditions aiding tomato crops in Florida. Tomato prices are currently 75% below the 3 year average. Demand for tomatoes is expected to pick up in response to an early spring occurring in the north. Prices USDA FOB shipping point unless noted (terminal).

	Price	Last Week	Difference	Price 11
Limes (150 ct.)	15.000	15.000	-	17.000
Lemons (95 ct.)	18.740	18.740	-	13.640
Lemons (200 ct.)	16.240	14.740	+1.500	16.640

Honeydew (6 ct.)	9.850	10.725	-.875	10.138
Cantaloupe (15 ct.)	14.963	14.963	-	10.283
Blueberries (12 count)	19.375	22.286	-2.911	32.425
Strawberries (12 pnts.)	15.000	14.500	+.500	14.500
Avocados (Hass 48 ct.)	33.500	31.750	+1.750	47.750
Bananas (40 lb.)- Term.	17.284	18.046	-.762	18.400
Pineapple (7 ct.)- Term.	14.480	12.928	+1.552	12.024
Idaho Potato (60 ct., 50 lb.)	12.500	12.625	-.125	24.000
Idaho Potato (70 ct., 50 lb.)	12.500	12.625	-.125	23.000
Idaho Potato (70 ct.)-Term.	17.941	17.058	+.883	26.650
Idaho Potato (90 ct., 50 lb.)	12.375	12.500	-.125	14.000
Idaho Pot. # 2 (6 oz., 100 lb.)	15.000	15.000	-	16.500
Processing Potato (cwt.)	9.000	12.500	-3.500	9.000
Yellow Onions (50 lb.)	7.000	5.000	+2.000	5.950
Yell Onions (50 lb.)-Term.	11.750	9.782	+1.968	9.931
Red Onions (25 lb.)- Term.	17.147	13.042	+4.105	7.917
White Onions (50 lb.)- Term.	21.969	20.125	+1.844	11.344
Tomatoes (large- case)	6.450	5.950	+.500	15.950
Tomatoes (5x6-25 lb.)-Term	9.250	10.334	-1.084	25.250
Tomatoes (4x5 vine ripe)	5.940	5.788	+.152	25.950
Roma Tomatoes (large- case)	6.742	5.788	-1.090	35.117
Roma Tomatoes (xlarge-cs)	6.842	6.415	+.427	35.117
Green Peppers (large- case)	15.950	8.084	+7.866	10.850
Red Peppers (large 15lb. cs.)	9.950	9.950	-	18.950
Iceberg Lettuce (24 count)	6.302	6.514	-.212	8.640
Iceberg Lettuce (24)-Term.	6.938	12.667	-5.729	14.667
Leaf Lettuce (24 count)	7.077	6.425	+.652	9.981
Romaine Lettuce (24 cnt.)	6.949	6.488	+.461	9.373
Mesculin Mix (3 lb.)-Term.	6.938	6.813	+.125	6.979
Broccoli (14 ct.)	5.142	6.027	-.885	8.513
Squash (1/2 bushel)	8.350	12.350	-4.000	7.850
Zucchini (1/2 bushel)	4.350	6.350	-2.000	7.850
Green Beans (bushel)	20.225	16.384	+3.841	16.350
Spinach, Flat 24's	10.950	11.825	-.875	18.575
Mushrms (10 lb, lg.)-Term.	14.292	16.167	-1.875	13.313
Cucumbers (bushel)	8.740	12.380	-3.640	13.154
Pickles (200-300 ct.)- Term.	23.063	23.188	-.125	27.806
Asparagus (small)	27.250	27.250	-	17.000
Freight (Truck; CA-Cty Av.)	5572.222	5277.777	+294.445	4155.556



Retail Prices-CPI, Percent compared to prior month from BLS.

	Feb-12	Jan-12	Dec-11	Nov-11
Beef and Veal	+.211	+1.136	+.885	+.353
Dairy	-.506	+.931	-.141	-.331
Pork	-.288	-.176	-1.030	-.906
Chicken	+.190	+.148	+.897	-.038
Fresh Fish and Seafood	-1.454	+.639	+.449	+.356
Fresh Fruits and Veg.	-2.367	+.555	+.252	-.399