



# FLOUR FACTS

Information Provided by General Mills Bakery Flour  
www.gmflour.com • www.pillsburybakery.com



June 2, 2011

## Weekly Market Highlights

- Russia lifted the ban on wheat exports, leading to some weakening in the futures market this week.
- Weather-related problems in the U.S. and Canada continue to hinder planting of the spring wheat crop.
- U.S. and global economic weakening also played a role in softening futures prices.
- The fall in the dollar index boosted investment demands in commodities. Futures prices were up at mid-day today.
- Corn futures were up due to the fact that corn farmers are also well behind in planting.
- Expect continued volatility!

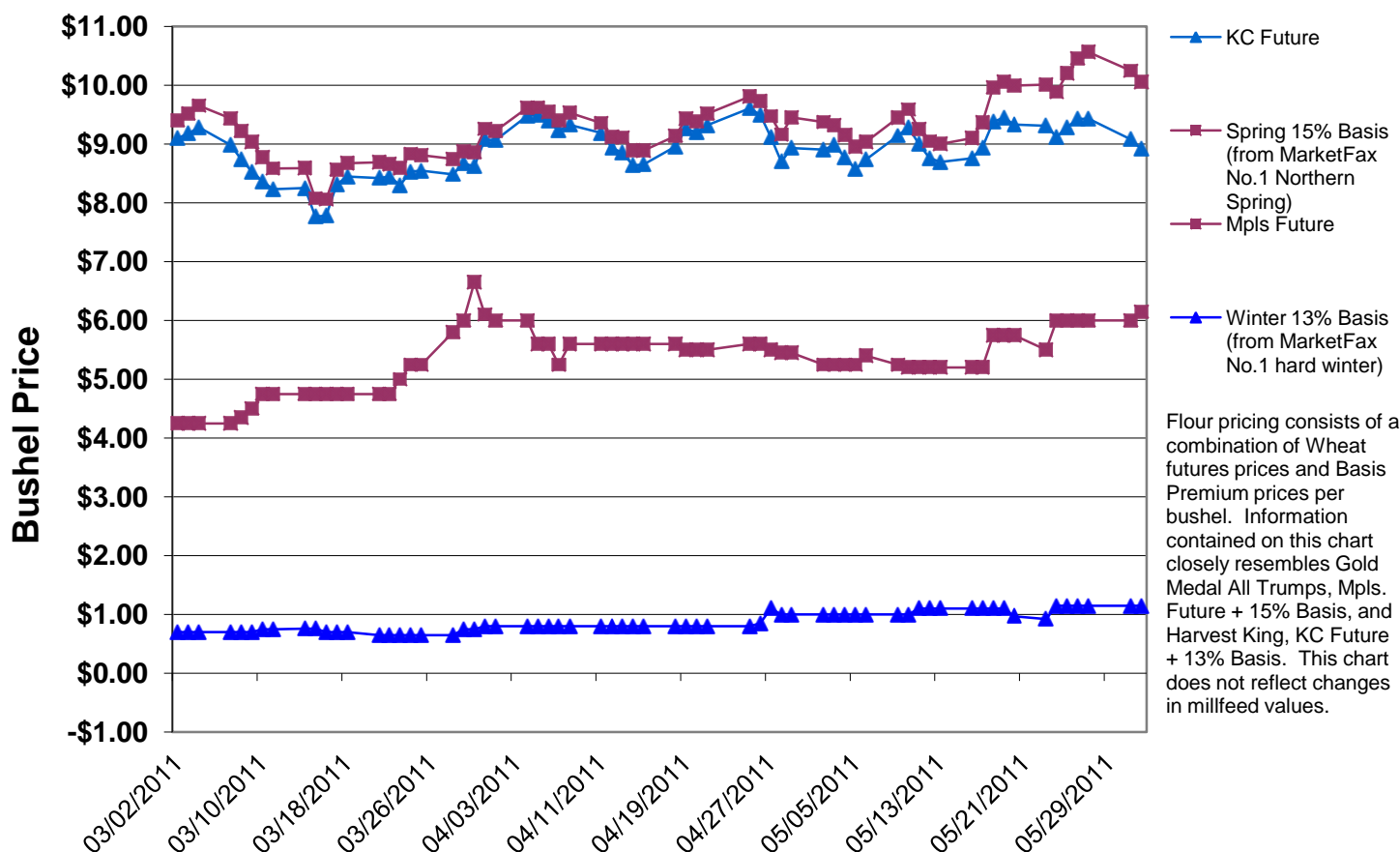
## Facts on Flour

### Soft White Wheat

Soft White Wheat is primarily grown in the Pacific Northwest. It is also grown in areas scattered throughout Montana. Soft wheat flour is used in cakes, crackers, cookies, pastries, quick breads, muffins and snack foods. The bulk of this wheat class is exported for use in flat breads, noodles and sponge cake.

◇ ◇ ◇

## Futures & Basis Markets



This Chart is meant to indicate Market Direction Only.

To add names to our distribution list, or if you would like to receive Flour Facts via e-mail, contact:  
Brenda Mengelkoch at 800-288-1624 [brenda.mengelkoch@genmills.com](mailto:brenda.mengelkoch@genmills.com)